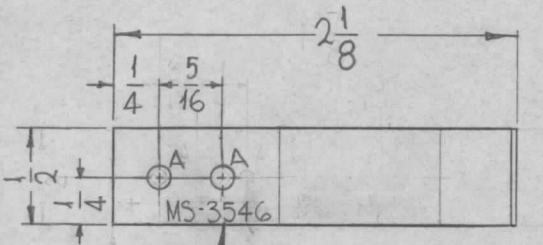
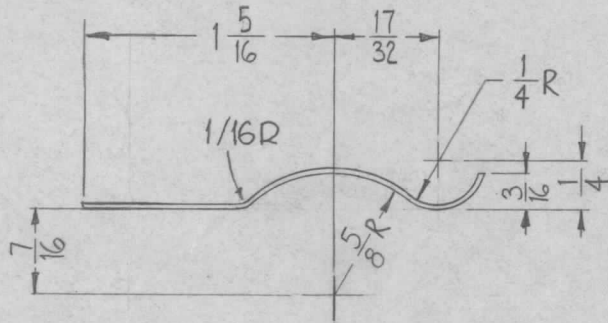


REQ. PER UNIT	USED ON			MS-3546	0
	MODEL	ASS'Y. NO.	DATE		
12	GPT-200K	AX-395	11-13-63		



HOLE	DESCRIPTION	REQ.
A	.125 DIA.	2

NOTE:  
HARDENING PROCESS 2 HOURS AT 600° F.

METAL STAMP TMC PART NO.  
1/8 HIGH GOTHIC.

SYM	DESCRIPTION	DATE	CH. NO.	DRAFTS	CHECKER	ENG. APP.	REQ. ITEM	PART NO.	DESCRIPTION	SYMBOL			
0	ORIGINAL RELEASE	5.16.64			JTB				F. BUDETTI				
	NOTE REMOVED WAS 2 HOURS AT 600° F MTRL WAS BERL COPPER							.030	THE TECHNICAL MATERIEL CORP. MAMARONECK. NEW YORK				
XI	HOLES WERE .067, 1/4 WAS 3/16, 5/16 WAS 1/4 DIM. 1-5/16 WAS 1-1/16, 2 1/8 WAS 1-7/8	5-13-64			SRG			GRADE A SPRING PHOSPHOR	SPRING, CLIP				
	UNLESS OTHERWISE SPECIFIED DIMENSIONS ARE IN INCHES AND INCLUDE CHEMICALLY APPLIED OR PLATED FINISHES	SCALE	1" = 1"										
	DECIMALS .X ± .05 .XX ± .01 .XXX ± .005	FRACTIONS ± 1/64 ANGLES ± 0° 30'	CODE						W A FRANCO	aa	RR		
	TOLERANCES								TYPE & TEMPER	HEAT TREAT. SPEC.	DRAWN	CHECKED	FINAL APPROVAL
									S-245 SILVER PLATE		2.R	12/64	MS-3546
									FINISH & SPEC. NO.	ELEC. DES. APP.	MECH. DES. APP.		