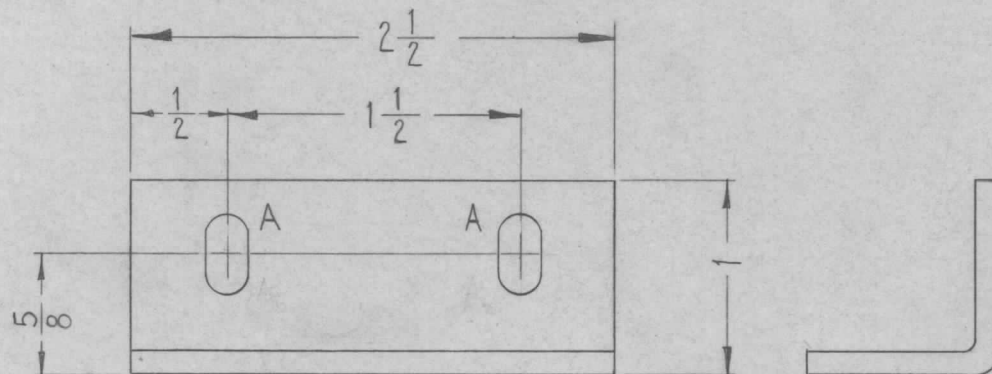


REQ. PER UNIT	USED ON		
	MODEL	ASS'Y. NO.	DATE
2	GPT-200K	AP-109	10-17-63
2	GPT-200K	AP-111	10-17-63

MS-3535 0

METAL STAMP TMC PART NO.
1/8 HIGH GOTHIC.

MS-3535-X



HOLE	DESCRIPTION	REQ.
A	1/4 X 1/2 SLOT	2

UNLESS OTHERWISE SPECIFIED:

1. USE MATERIAL THICKNESS FOR MAXIMUM RADIUS ON ALL BENDS.
2. ALL ANGULAR BENDS 90°.
3. REMOVE ALL BURRS AND SHARP EDGES.

MS-3535-1 AS SHOWN FINISH S 404
MS-3535-2 AS SHOWN FINISH S 404

SYM	DESCRIPTION	DATE	CH. NO.	DRAFTS	CHECKER	ENG. APP.	REQ. ITEM	PART NO.	F. BUDETTI	DESCRIPTION	SYMBOL	
0	ORIGINAL RELEASE	5.16.64					1 X 1 X 1/8 THICK			THE TECHNICAL MATERIEL CORP. MAMARONECK, NEW YORK	BRACKET, SUPPORT	
X2	-1, -2 DELETED. FINISH, S404	12-23-63					STOCK SIZE					
X1	DWG MADE MS-3535-1, -2	12-2-63					ALUMINUM					
UNLESS OTHERWISE SPECIFIED DIMENSIONS ARE IN INCHES AND INCLUDE CHEMICALLY APPLIED OR PLATED FINISHES		SCALE	Do Not Scale				5052-H32	TYPE & TEMPER	HEAT TREAT. SPEC.	W.A. FRANCO	aa	RAE
DECIMALS .X ± .05 .XX ± .01 .XXX ± .005		FRACTIONS ± 1/64 ANGLES ± 0° 30'		TOLERANCES		CODE	S404-IRIDITE, 14-2 AL. COAT		FINISH & SPEC. NO.	DRAWN	CHECKED	FINAL APPROVAL
												MS-3535 0