

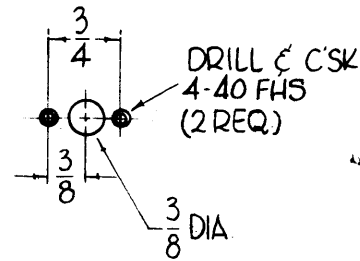
HOLES

A - 15/64 DIA.

REQ

4

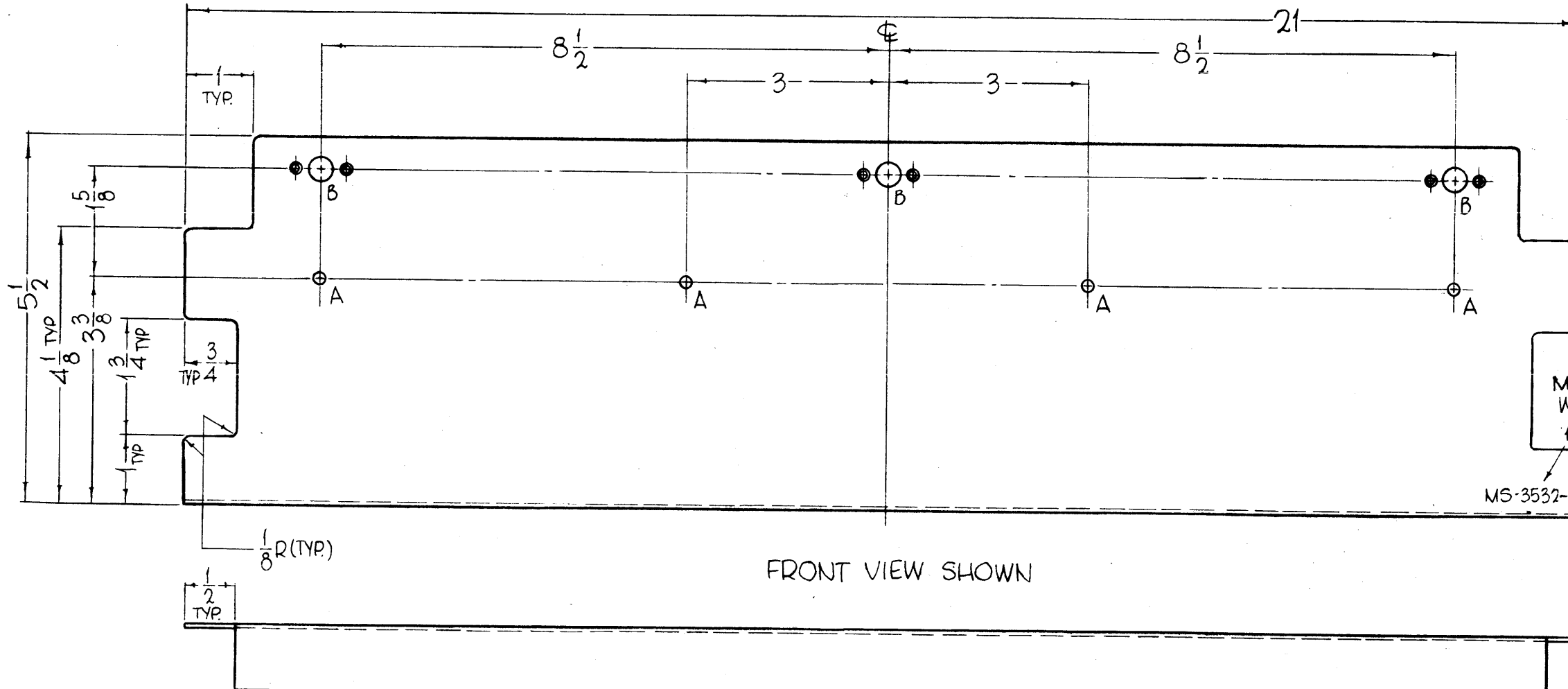
B - 3 REQ.
AS SHOWN
ON FRONT
OF PLATE.



MS-3532

REVISIONS

SYM	DESCRIPTION	DATE	E.M.N. NO.	DRAFT	CHKD	APPD
X1	DWG MADE 3532-1 AS SHOWN, 3532-2 OPPOSITE HAND	11-9-63				
X2	MS-3532-1, -2 REMOVED, NOTCH ADDED, 1/2 CUT FOR NOTCH WAS 1/P	11-20-63				
X3	1" TYP NOTCH WAS 1/2", 1/2" NOTCH'S ADDED TO BOTTOM LIP.	1-21-64				
Ø	ORIGINAL RELEASE FOR PRODUCTION	3/25/69	Ø			JDe



METAL STAMP TMC PART NO.
W/LATEST REVISION LETTER
1/8 HIGH GOTHIC.

MS-3532-

FRONT VIEW SHOWN

UNLESS OTHERWISE SPECIFIED:

1. USE MATERIAL THICKNESS FOR MAXIMUM RADIUS ON ALL BENDS.
2. ALL ANGULAR BENDS 90°.
3. REMOVE ALL BURRS AND SHARP EDGES.

NOTES

THE CONTENTS OF THIS DRAWING ARE THE EXCLUSIVE PROPERTY OF THE TECHNICAL MATERIEL CORP. ITS UNAUTHORIZED USE OR REPRODUCTION IN WHOLE OR IN PART IS STRICTLY FORBIDDEN.

REQ'D.	ITEM	PART NUMBER	DESCRIPTION	SYMBOL
F. BUDETTI LIST OF MATERIAL				
MATERIAL			THE TECHNICAL MATERIEL CORP. MAMARONECK, NEW YORK	
.064 THICK, ALUMINUM, 5052 - H-32			TITLE	
FINISH			PLATE, SHIELD, TRIM	
S-404-IRIDITE, 14-2 AL-COAT			DRAWN	
UNLESS OTHERWISE SPECIFIED			John C. Biele	
DIMENSIONS ARE IN INCHES AND INCLUDE			DATE 10-7-63	
CHEMICALLY APPLIED OR PLATED FINISHES			FINAL APPROVAL	
DECIMALS			Ø JCB	
.X ± .05			DATE 1-21-64	
.XX ± .01			DATE	
.XXX ± .005			MS-3532	
TOLERANCES			SHEET	
FRACTIONS			REV. LTR.	
± 1/64			Ø	
ANGLES				
± 0° 30'				