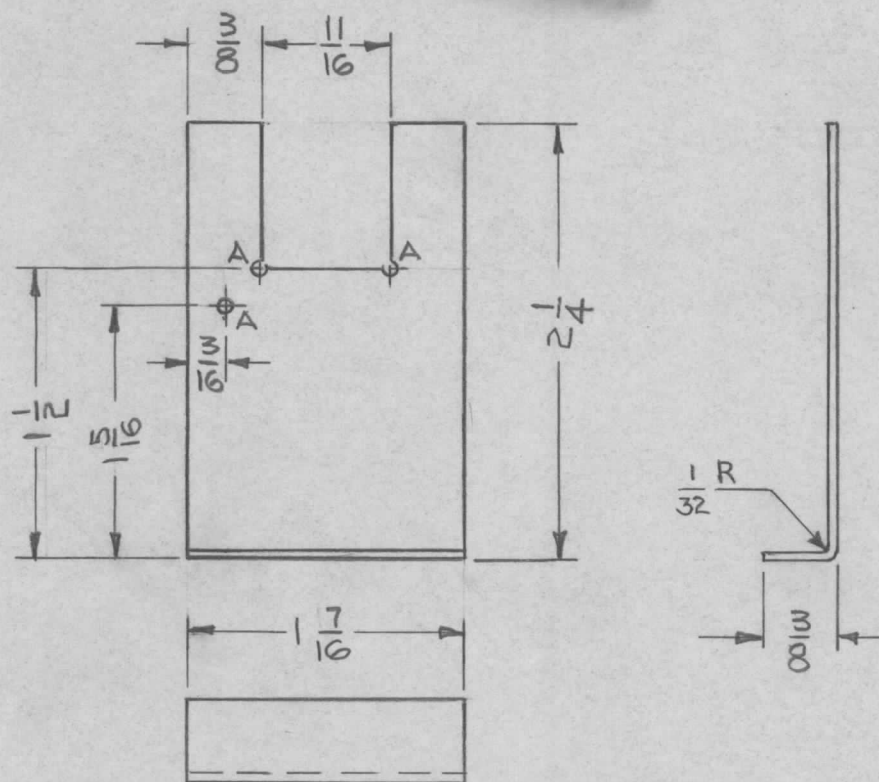


REQ. PER UNIT	USED ON			MS-3527
	MODEL	ASSY. NO.	DATE	
1	FX-196	A-3300	9/18/63	



A = 1/16 DIA 3 REQ'D

								REQ. ITEM	PART NO.	M. GELLMAN	DESCRIPTION	SYMBOL	
								#20 GAUGE		THE TECHNICAL MATERIEL CORP. MAMARONECK, NEW YORK			
								STOCK SIZE		BRACKET, MOUNTING, XTAL			
								COPPER					
SYM	DESCRIPTION	DATE	CH. NO.	DRAFTS	CHECKER	ENG. APP.		MATERIAL					
UNLESS OTHERWISE SPECIFIED DIMENSIONS ARE IN INCHES AND INCLUDE CHEMICALLY APPLIED OR PLATED FINISHES		SCALE		1:1				1/2 H		<i>N. Peters</i>	<i>De 11/6/63</i>	<i>JSP</i>	
								TYPE & TEMPER	HEAT TREAT. SPEC.	DRAWN	CHECKED	FINAL APPROVAL	
DECIMALS .X ± .05 .XX ± .01 .XXX ± .005		FRACTIONS ± 1/64 ANGLES ± 0° 30'		CODE A				SOLDER DIPPED		<i>MS</i>	<i>MS</i>	MS-3527	
								FINISH & SPEC. NO.		ELEC. DES. APP.	MECH. DES. APP.		