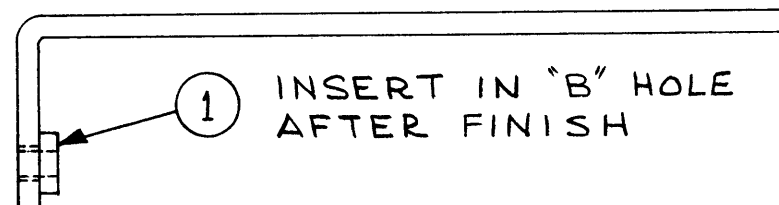


MS-3400

REVISIONS						
SYM	DESCRIPTION	DATE	E.M.N. NO.	DRAFT	CHKD	APPD
A	UPDATED TITLE & MODEL USED ON	9-23-63	10,026	RD.	JAN	JAN



HOLE LEGEND:

HOLE A - DRILL 5/32 DIA. - 4 REQ'D
 HOLE B - DRILL .221 DIA - 2 REQ'D

2	1	NT-129 - 832-6	NUT, SWAGE	B
REQ'D.	ITEM	PART NUMBER	DESCRIPTION	SYMBOL

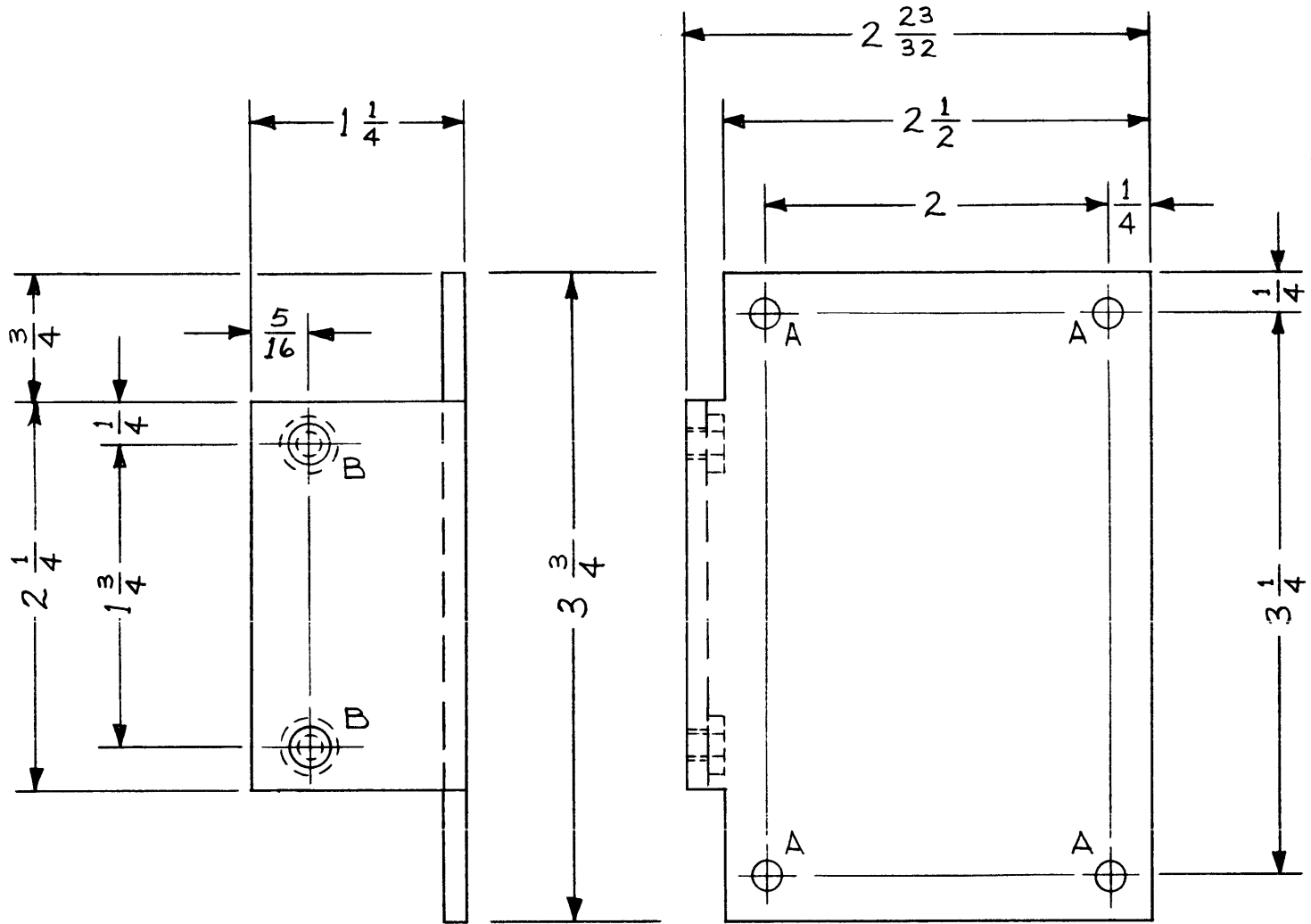
IRV JOHNSON		LIST OF MATERIAL	
MATERIAL ALUMINUM 1/8 THICK 5052 - H 32		THE TECHNICAL MATERIEL CORP. MAMARONECK, NEW YORK	
FINISH S404 YEL IRIDITE		TITLE BRACKET, SPRING MOUNTING	

2	RAK-29A	A-3219
Q'TY./UNIT	MODEL USED ON	ASS'Y. NO.
SCALE 1:1	CODE	

UNLESS OTHERWISE SPECIFIED DIMENSIONS ARE IN INCHES AND INCLUDE CHEMICALLY APPLIED OR PLATED FINISHES		DRAWN M.J. TANTILLO		DATE 7-17-63	FINAL APPROVAL <i>JFH</i>		DATE 7-18-63
DECIMALS .X ± .05 .XX ± .01 .XXX ± .005		FRACTIONS ± 1/64 ANGLES ± 0° 30'		CHECKED <i>[Signature]</i>		DATE 7-17-63	
TOLERANCES		ELECT. DES. <i>[Signature]</i>		DATE 7-17-63		MS-3400	
		MECH. DES. <i>[Signature]</i>		DATE 7-17-63		SHEET	
						A	
						REV. LTR.	

NOTES

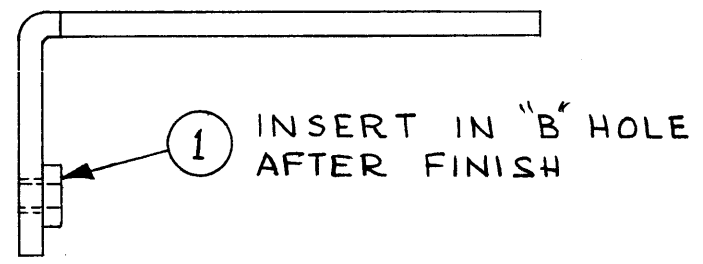
THE CONTENTS OF THIS DRAWING ARE THE EXCLUSIVE PROPERTY OF THE TECHNICAL MATERIEL CORP. ITS UNAUTHORIZED USE OR REPRODUCTION IN WHOLE OR IN PART IS STRICTLY FORBIDDEN.



A
MS-3401

REVISIONS					
SYM	DESCRIPTION	DATE	EM N. NO.	DRAFT	CHKD APPD
A	UPDATED TITLE & MODEL USED ON	9-23-63	10,026	AD.	YFH

HOLE LEGEND:
 HOLE A - DRILL 5/32 DIA. - 4 REQ'D
 HOLE B - DRILL .221 DIA. - 2 REQ'D



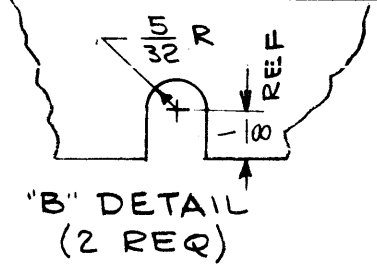
REQ'D.	ITEM	PART NUMBER	DESCRIPTION	SYMBOL
2	1	NT-129 832-6	NUT, SWAGE	

LIST OF MATERIAL			
MATERIAL ALUMINUM 1/8" THICK 5052 - H32		THE TECHNICAL MATERIEL CORP. MAMARONECK, NEW YORK	
FINISH S404 - YEL. IRIDITE		TITLE BRACKET, SPRING MOUNTING	
UNLESS OTHERWISE SPECIFIED DIMENSIONS ARE IN INCHES AND INCLUDE CHEMICALLY APPLIED OR PLATED FINISHES		DRAWN M.J. TANTILLO	DATE 7-17-63
DECIMALS .X ± .05 .XX ± .01 .XXX ± .005		CHECKED <i>W. Katero</i>	DATE 7-17-63
FRACTIONS ± 1/64 ANGLES ± 0° 30'		ELECT. DES. <i>JSJ</i>	DATE 7/17/63
TOLERANCES		MECH. DES. <i>JSJ</i>	DATE 7/17/63
THE CONTENTS OF THIS DRAWING ARE THE EXCLUSIVE PROPERTY OF THE TECHNICAL MATERIEL CORP. ITS UNAUTHORIZED USE OR REPRODUCTION IN WHOLE OR IN PART IS STRICTLY FORBIDDEN.		FINAL APPROVAL <i>YFH</i>	DATE 7-18-63
NOTES		MS-3401	A
		SHEET	REV. LTR.

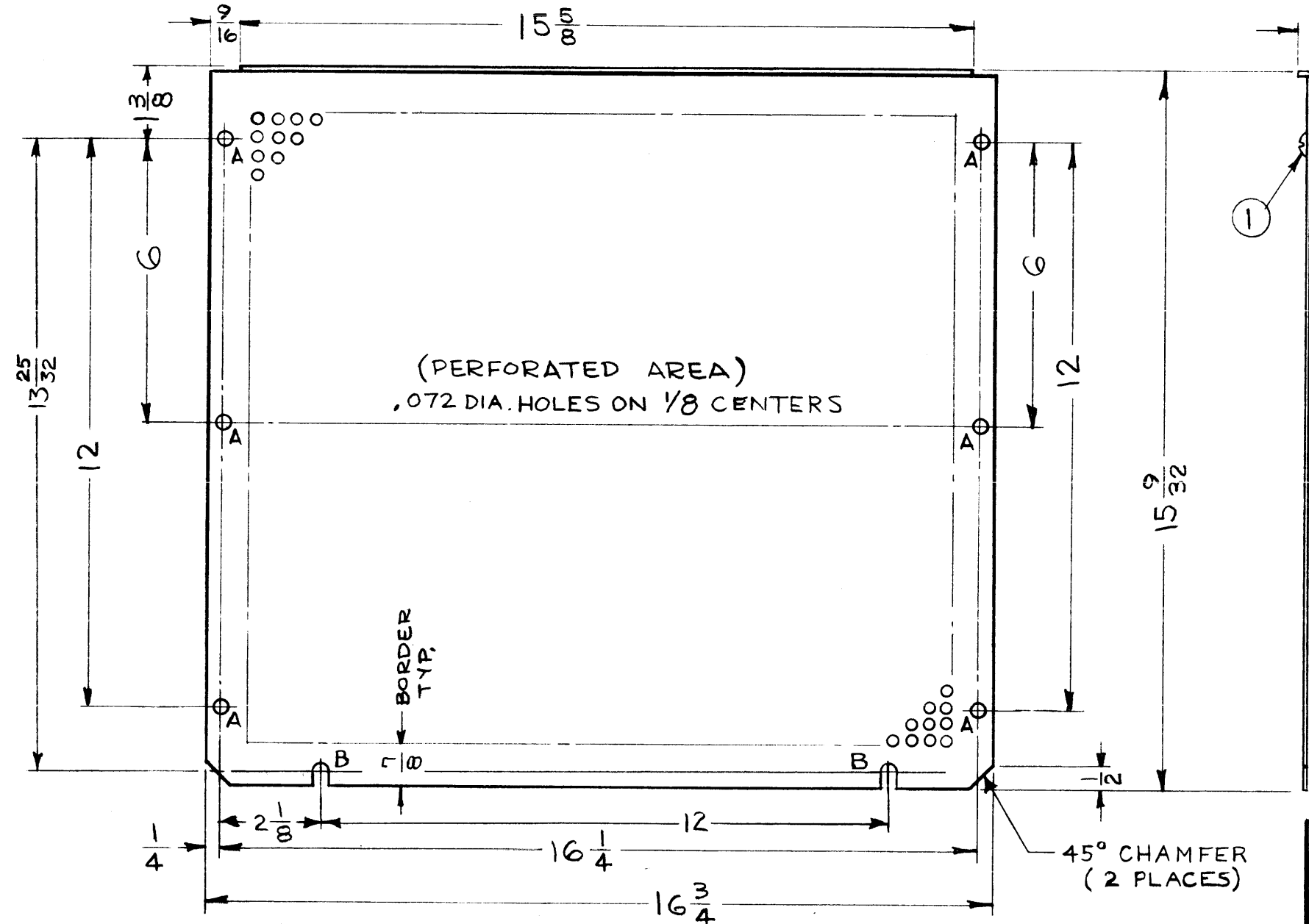
Q'TY./UNIT	MODEL USED ON	ASS'Y. NO.
2	RAK-29A	A-3179
SCALE 1:1	CODE	

MS 3402 A

THE CONTENTS OF THIS DRAWING ARE THE EXCLUSIVE PROPERTY OF THE TECHNICAL MATERIEL CORP. ITS UNAUTHORIZED USE OR REPRODUCTION IN WHOLE OR IN PART IS STRICTLY FORBIDDEN.



LEGEND		
HOLE	DESCRIPTION	REQ
A	1/4 DIA.	6
B	SEE DETAIL	2



② MOUNT ITEM 1 & 2 IN ALL "A" HOLES AS SHOWN

- UNLESS OTHERWISE SPECIFIED:**
1. USE MATERIAL THICKNESS FOR MAXIMUM RADIUS ON ALL BENDS.
 2. ALL ANGULAR BENDS 90°.
 3. REMOVE ALL BURRS AND SHARP EDGES.
 4. MOUNT INSERTS AFTER FINISHING.

METAL STAMP TMC PART NO. 1/8 HIGH GOTHIC. (MS-3402) WITH LATEST REVISION LETTER

A	TT.2 WAS FS 109	9-24-64	12446	WB	②	
O	ORIGINAL RELEASE FOR PRODUCTION	5-11-64	0	A.M.	②	
X2	(2) "B" SLOTS WERE 5/16 DIA. HOLES	12/10/63	2			
X1	ITEM (1) & (2) TURNED 180°	7-20-63	1	G.S.		

UNLESS OTHERWISE SPECIFIED:
 DIMENSIONS ARE IN INCHES
 TOLERANCES ON FRACTIONS ± 1/64 DECIMALS ± .005 ANGLES ± 1/2°
 SCALE: 1 : 3
 MAXIMUM ALLOWABLE TOLERANCES HAVE BEEN DETERMINED AND ANY DEVIATIONS WILL BE CAUSE FOR REJECTION. REMOVE ALL BURRS AND SHARP EDGES

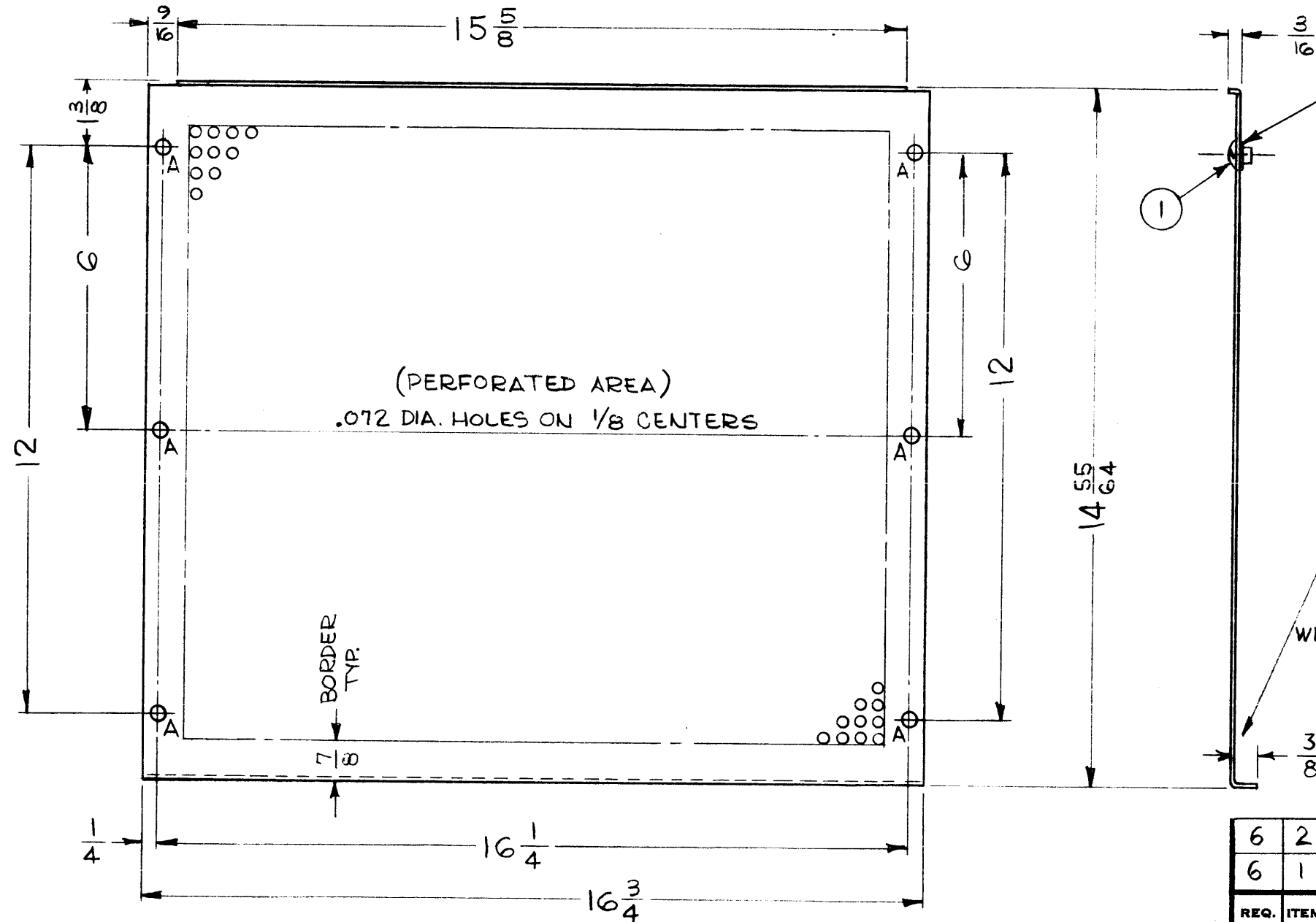
REQ. PER UNIT	MODEL	SECTION	ASS'Y. NO.	DATE
1	LFS-1			6-4-63
1	VLR-1			6-4-63

6	2	FS 109-3	RING, STUD RETAINING	A
6	1	FS 110-1	STUD, SLOTTED HEAD	A
REQ. ITEM	PART NO.		M. GELLMAN DESCRIPTION	SYMBOL
.052 THK STOCK SIZE			THE TECHNICAL MATERIEL CORP. MAMARONECK, NEW YORK	
ALUMINUM PERFORATED			COVER, BOTTOM	
MATERIAL				
5052-H32				
TYPE & TEMPER		HEAT TREAT. SPEC.	DRAWN	CHECKED
5404 - YELLOW IRIDITE				
FINISH & SPEC. NO.			ELC. DES. APP.	MECH. DES. APP.
				MS 3402 A

MS 3403 A

THE CONTENTS OF THIS DRAWING ARE THE EXCLUSIVE PROPERTY OF THE TECHNICAL MATERIEL CORP. ITS UNAUTHORIZED USE OR REPRODUCTION IN WHOLE OR IN PART IS STRICTLY FORBIDDEN.

LEGEND		
HOLE	DESCRIPTION	REQ.
A	1/4 DIA	6



② MOUNT ITEM 1 & 2 IN ALL "A" HOLES AS SHOWN AFTER FINISH

- UNLESS OTHERWISE SPECIFIED:
1. USE MATERIAL THICKNESS FOR MAXIMUM RADIUS ON ALL BENDS.
 2. ALL ANGULAR BENDS 90°.
 3. REMOVE ALL BURRS AND SHARP EDGES.
 4. MOUNT INSERTS AFTER FINISHING.

METAL STAMP TMC PART NO. 1/8 HIGH GOTHIC. (MS 3403) WITH LATEST REVISION LETTER

6	2	FS 109-3	RING, STUD RETAINING	A
6	1	FS 110-1	STUD, SLOTTED HEAD	A
REQ.	ITEM	PART NO.	M. GELLMAN DESCRIPTION	SYMBOL
.052 THK STOCK SIZE			THE TECHNICAL MATERIEL CORP. MAMARONECK, NEW YORK	
ALUMINUM PERFORATED MATERIAL			COVER, TOP	
5052-H32			<i>G. Lerner</i>	<i>@</i>
TYPE & TEMPER		HEAT TREAT. SPEC.	DRAWN	CHECKED
S404-YELLOW IRIDITE			<i>JMA</i>	<i>M. J. Lerner</i>
FINISH & SPEC. NO.		LEC. DES. APP.	MECH. DES. APP.	MS 3403 A

A	IT. 2 WAS FS 109	9-24-61	12446	HTB	@	
0	ORIGINAL RELEASE FOR PRODUCTION	5-12-64	0	A.M.	@	
SYM	DESCRIPTION	DATE	CH. NO.	DRAFTS	CHECKER	ENG. APP.
UNLESS OTHERWISE SPECIFIED:		SCALE: 1:3				
DIMENSIONS ARE IN INCHES		MAXIMUM ALLOWABLE TOLERANCES HAVE BEEN DETERMINED AND ANY DEVIATIONS WILL BE CAUSE FOR REJECTION.				
TOLERANCES ON FRACTIONS ± 1/64		REMOVE ALL BURRS AND SHARP EDGES				
DECIMALS ± .05						
ANGLES ± 1/2°						

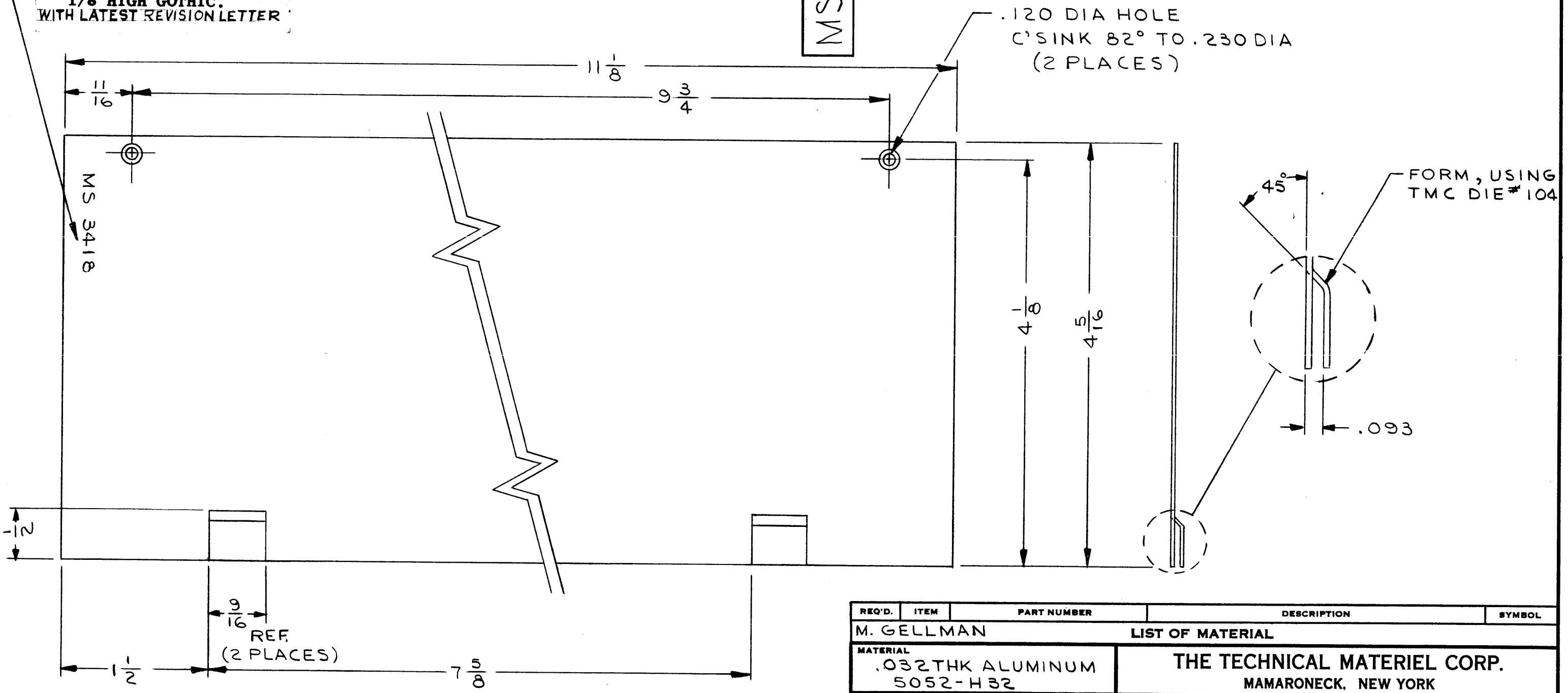
REQ. PER UNIT	MODEL	SECTION	ASS'Y. NO.	DATE
1	LFS-1			6-4-63
1	VLR-1			6-4-63

USED ON

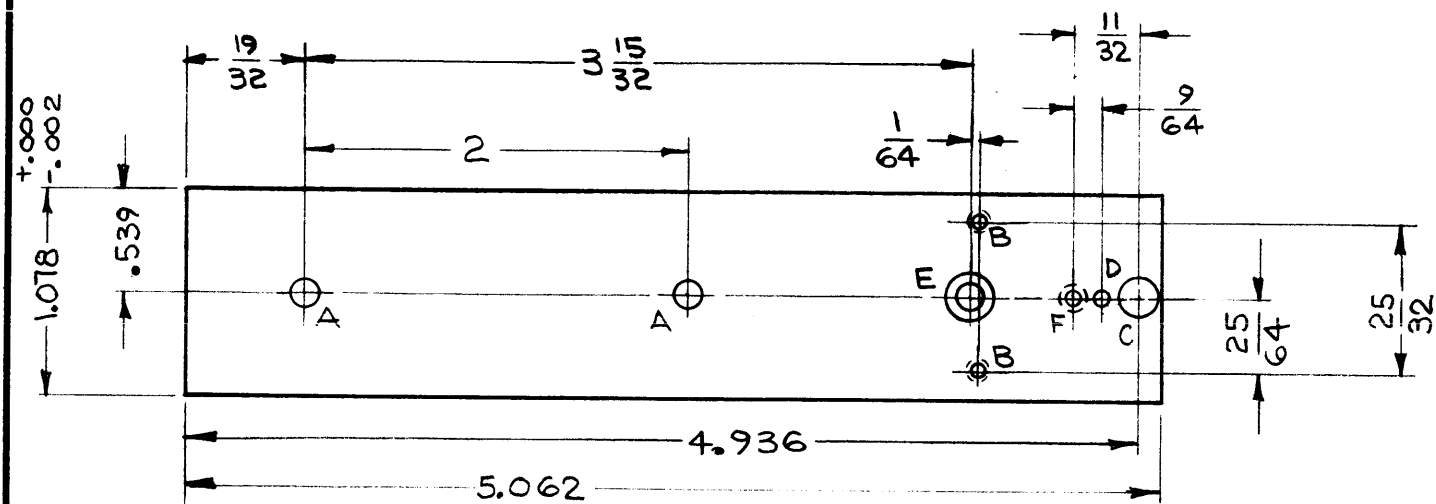
MS 3418 0

REVISIONS						
SYM	DESCRIPTION	DATE	E.M.N. NO.	DRAFT	CHKD	APPD
X1	COMPLETELY REDRAWN & REVISED	11/10/63		JL		JL
X2	DWG TITLE WAS COVER-MTG FRAME (R.F. MODULE)	4/9/64		JL		JL
0	ORIGINAL RELEASE FOR PRODUCTION	5-11-64	0	A.M.	@	

METAL STAMP TMC PART NO.
1/8 HIGH GOTHIC.
WITH LATEST REVISION LETTER



REQ'D.	ITEM	PART NUMBER	DESCRIPTION	SYMBOL
M. GELLMAN LIST OF MATERIAL				
MATERIAL		THE TECHNICAL MATERIEL CORP. MAMARONECK, NEW YORK		
.032 THK ALUMINUM 5052-H32		TITLE COVER, SIDE-MOUNTING FRAME		
FINISH		S404 - YELLOW IRIDITE		
UNLESS OTHERWISE SPECIFIED DIMENSIONS ARE IN INCHES AND INCLUDE CHEMICALLY APPLIED OR PLATED FINISHES		DRAWN J. LESHINSKI	DATE 11/11/63	FINAL APPROVAL Koe
		CHECKED @	DATE 5-7-64	
DECIMALS .X ± .05 .XX ± .01 .XXX ± .005		FRACTIONS ± 1/64 ANGLES ± 0° 30'		TOLERANCES
SCALE 1:1		CODE A	ASS'Y. NO. AX 432	QTY./UNIT 20
MODEL USED ON VLR-1		DATE 12-27-63		
THE CONTENTS OF THIS DRAWING ARE THE EXCLUSIVE PROPERTY OF THE TECHNICAL MATERIEL CORP. ITS UNAUTHORIZED USE OR REPRODUCTION IN WHOLE OR IN PART IS STRICTLY FORBIDDEN.		ELECT. DES. M. J. [Signature]		MECH. DES. [Signature]
NOTES		MS 3418		0
		SHEET		REV. LTR.



①②③④
MOUNT IN "F" HOLE AS SHOWN AFTER FINISHING.

METAL STAMP TMC PART NO. 1/8 HIGH GOTHIC ON REAR OF PANEL W/LATEST REVISION LETTER

MS 3419 0

REVISIONS					
SYM	DESCRIPTION	DATE	E.M.N. NO.	DRAFT	CHKD APPD
X1	REDRAWN FROM SIZE (1) WITH NO CHANGES	9-26-63	1	FS	
X2	(B) HOLES WERE .076 DIA; "B" HOLES RELOCATED	3/16/64	2	FS	
0	ORIGINAL RELEASE FOR PRODUCTION	5/12/64	0	A.M.	

LEGEND		
HOLE	DESCRIPTION	REQ.
A	.120 DIA.	2
B	*50 (.070) DRILL AND TAP * 2-56 NC-2A THREAD.	2
C	.199 DIA.	1
D	.062 DIA.	1
E	.120 DIA. HOLE, C'SINK 82° TO .230 DIA. ON TOP	1
F	.082 DIA. HOLE, C'SINK 60° 3/64 DP, ON REAR	1

MACHINING:

- MILL ALL EDGES.
- HOLES MUST BE DRILLED, UNLESS OTHERWISE SPECIFIED.
- LATERAL BOW OF PANEL MUST BE KEPT TO .031 TOLERANCE.
- PANEL MUST BE FREE OF ALL MACHINING MARKS, GOUGES AND SCRATCHES. IF NECESSARY, SAND FRONT OF PANEL WITH NO. 120 GRIT SANDPAPER.

FINISH NOTES:

- S404 - IRIDITE 14-2 AL-COAT.
- S114 - ZINC CHROMATE PRIMER) FRONT AND
- S115 - SMOOTH GRAY ENAMEL) EDGES ONLY

REQ'D.	ITEM	PART NUMBER	DESCRIPTION	SYMBOL
1	4	FS 119-2	LATCHGUIDE, SNAPSLIDE FASTENER	F
1	3	FS 118-1	LATCH, SNAPSLIDE FASTENER	F
1	2	WA 131-22	WASHER, SPRING	F
1		FS 120-1	POST, SNAPSLIDE FASTENER	F

M.GELLMAN		LIST OF MATERIAL	
MATERIAL	.090, ALUMINUM 2024-T3	THE TECHNICAL MATERIEL CORP. MAMARONECK, NEW YORK	
FINISH	SEE NOTES	TITLE PANEL, MOUNTING, FRONT (RF MODULE)	
UNLESS OTHERWISE SPECIFIED DIMENSIONS ARE IN INCHES AND INCLUDE CHEMICALLY APPLIED OR PLATED FINISHES		DRAWN <i>G. Jensen</i>	DATE 9-26-63
		CHECKED <i>@</i>	DATE 5-7-64
		ELECT. DES. <i>W</i>	DATE
		MECH. DES. <i>W</i>	DATE 5-7-64
		FINAL APPROVAL <i>W</i>	
		DATE	
		MS 3419	
		SHEET	
		REV. LTR.	

NOTES

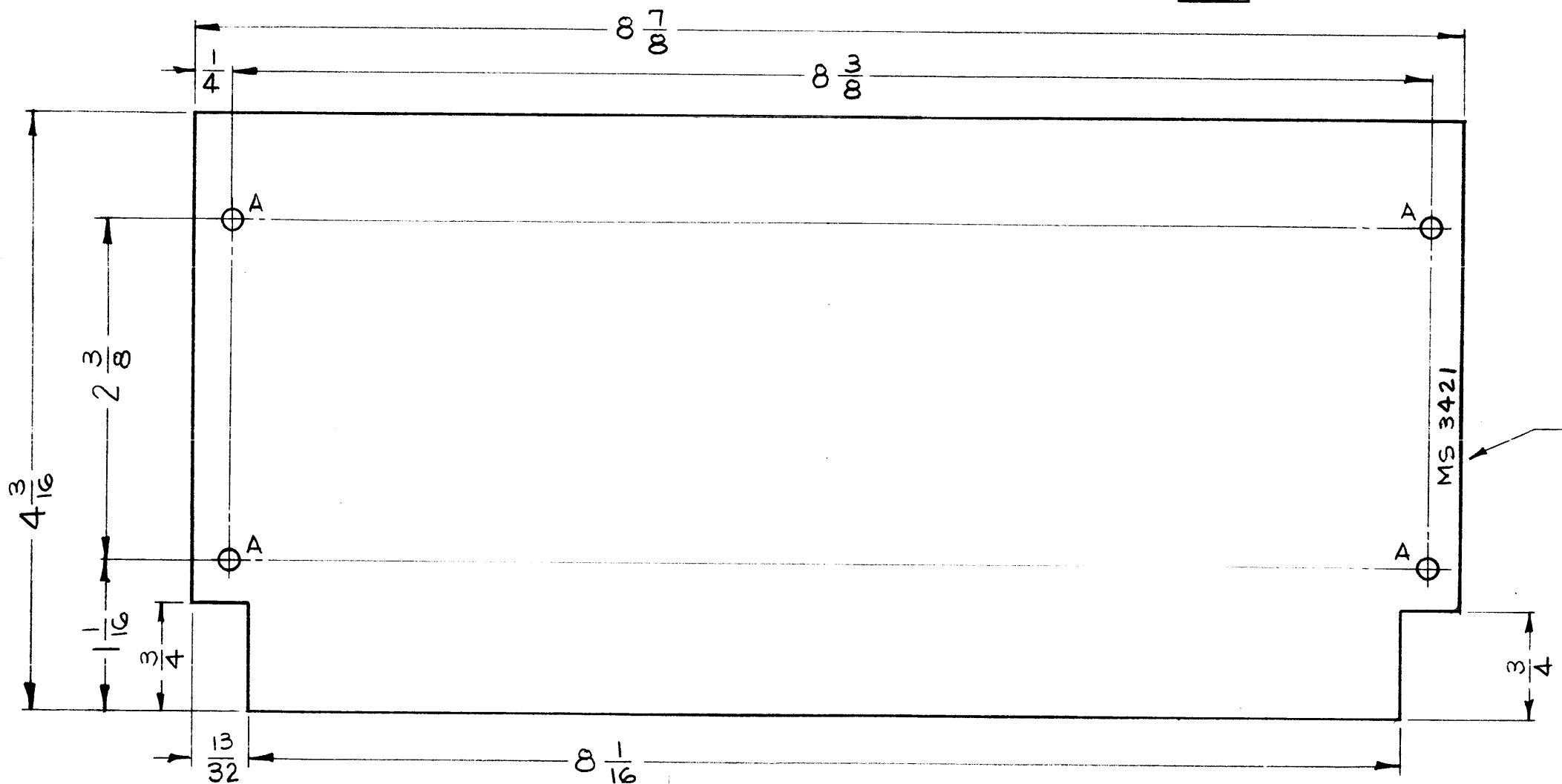
10	VLR-1	
Q'TY./UNIT	MODEL USED ON	ASS'Y. NO.
SCALE 1:1	CODE A	
THE CONTENTS OF THIS DRAWING ARE THE EXCLUSIVE PROPERTY OF THE TECHNICAL MATERIEL CORP. ITS UNAUTHORIZED USE OR REPRODUCTION IN WHOLE OR IN PART IS STRICTLY FORBIDDEN.		

DECIMALS	TOLERANCES	FRACTIONS
.X ± .05		± 1/64
.XX ± .01		ANGLES
.XXX ± .005		± 0° 30'

MS 3421

REVISIONS

SYM	DESCRIPTION	DATE	E.M.N. NO.	DRAFT	CHKD	APPD
XI	DWG TITLE WAS COVER-MTG FRAME (IF MODULE); ADDED TO USED ON FROM AX-470 UP TO AX-475	4/3/64	1	JL		<i>[Signature]</i>
0	ORIGINAL RELEASE FOR PRODUCTION	5-12-64	0	A.M.	<i>[Signature]</i>	



LEGEND		
HOLE	DESCRIPTION	REQ.
A	9/64 DIA	4

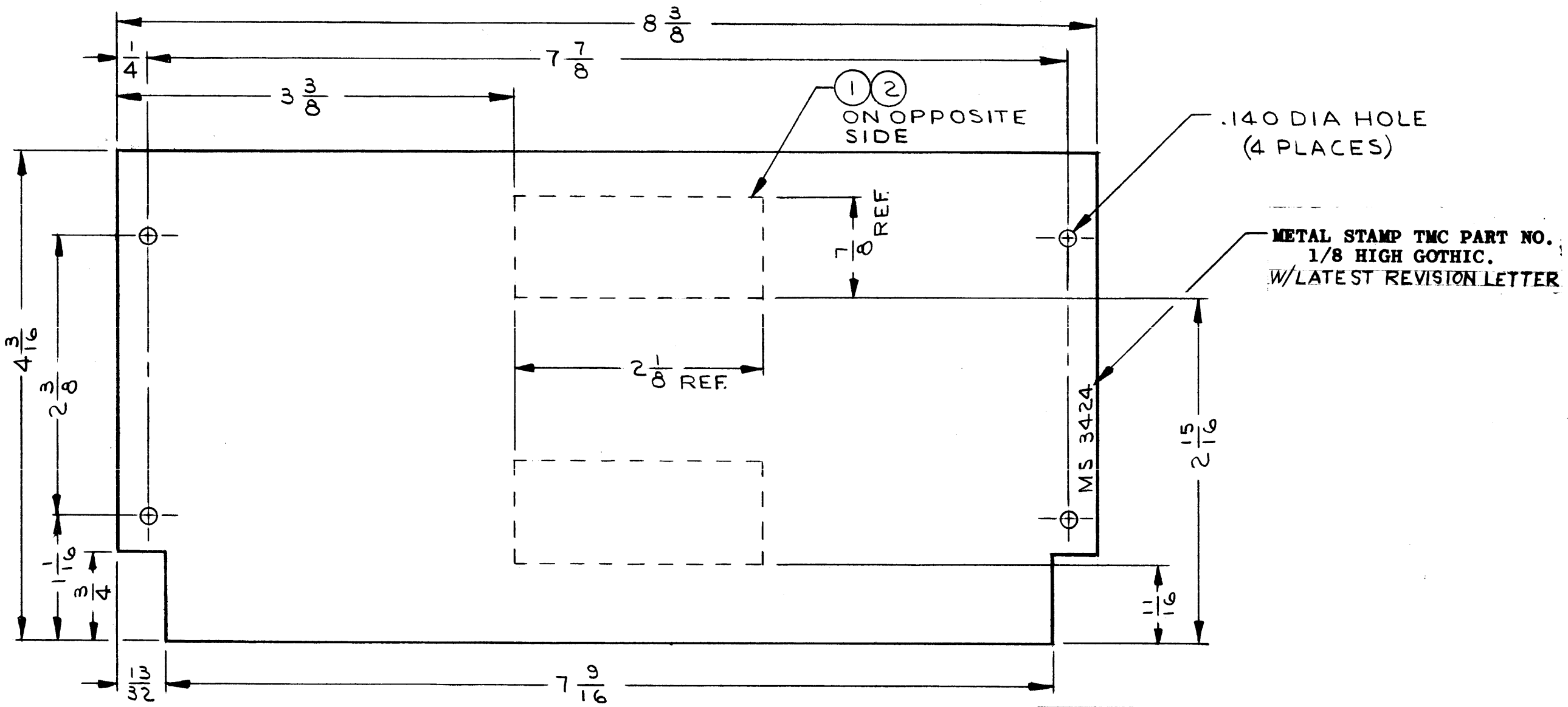
REMOVE ALL BURRS AND SHARP EDGES.

NOTES

Q'TY./UNIT	MODEL USED ON	ASSY. NO.
1	LFS-1	AX-475
1		AX-474
4		AX-473
5		AX-472
1		AX-471
1	LFS-1	AX-470
1	VLR-1	AX-425

REQ'D.	ITEM	PART NUMBER	DESCRIPTION	SYMBOL
		M. GELLMAN	LIST OF MATERIAL	
	MATERIAL	.032, ALUMINUM 5052-H32	THE TECHNICAL MATERIEL CORP. MAMARONECK, NEW YORK	
	FINISH	IRIDITE AS PER TMC SPEC. S-404	TITLE COVER SIDE-MOUNTING FRAME	
	UNLESS OTHERWISE SPECIFIED DIMENSIONS ARE IN INCHES AND INCLUDE CHEMICALLY APPLIED OR PLATED FINISHES	DRAWN <i>[Signature]</i>	DATE 4-10-63	FINAL APPROVAL <i>[Signature]</i>
	DECIMALS .X ± .05 .XX ± .01 .XXX ± .005	TOLERANCES	FRACTIONS ± 1/64 ANGLES ± 0° 30'	DATE 5-7-64
	SCALE FULL	CODE A	ELECT. DES. <i>[Signature]</i>	DATE
	THE CONTENTS OF THIS DRAWING ARE THE EXCLUSIVE PROPERTY OF THE TECHNICAL MATERIEL CORP. ITS UNAUTHORIZED USE OR REPRODUCTION IN WHOLE OR IN PART IS STRICTLY FORBIDDEN.		MECH. DES. <i>[Signature]</i>	DATE
				MS 3421
				0
				SHEET
				REV. LTR.

REVISIONS						
SYM	DESCRIPTION	DATE	E.M.N. NO.	DRAFT	CHKD	APPD
X1	COMPLETELY REDRAWN WITH CHANGES	11/21/63	1	JL		MP
X2	AX-424 WAS AX-434 (ASSY NO.)	3/16/64	2	JL		
X3	DWG TITLE WAS COVER-MTG FRAME (AF-BFO MODULE)	4/9/64	3	JL		
0	ORIGINAL RELEASE FOR PRODUCTION	5/12/64	0	A.M.	@	



NOTES:
 1-ITEMS ① & ② ARE TO BE ASSEMBLED TO AF MODULE COVER, AX-431 ONLY.
 2- REMOVE ALL BURRS & SHARP EDGES.

SEE NOTE: 1

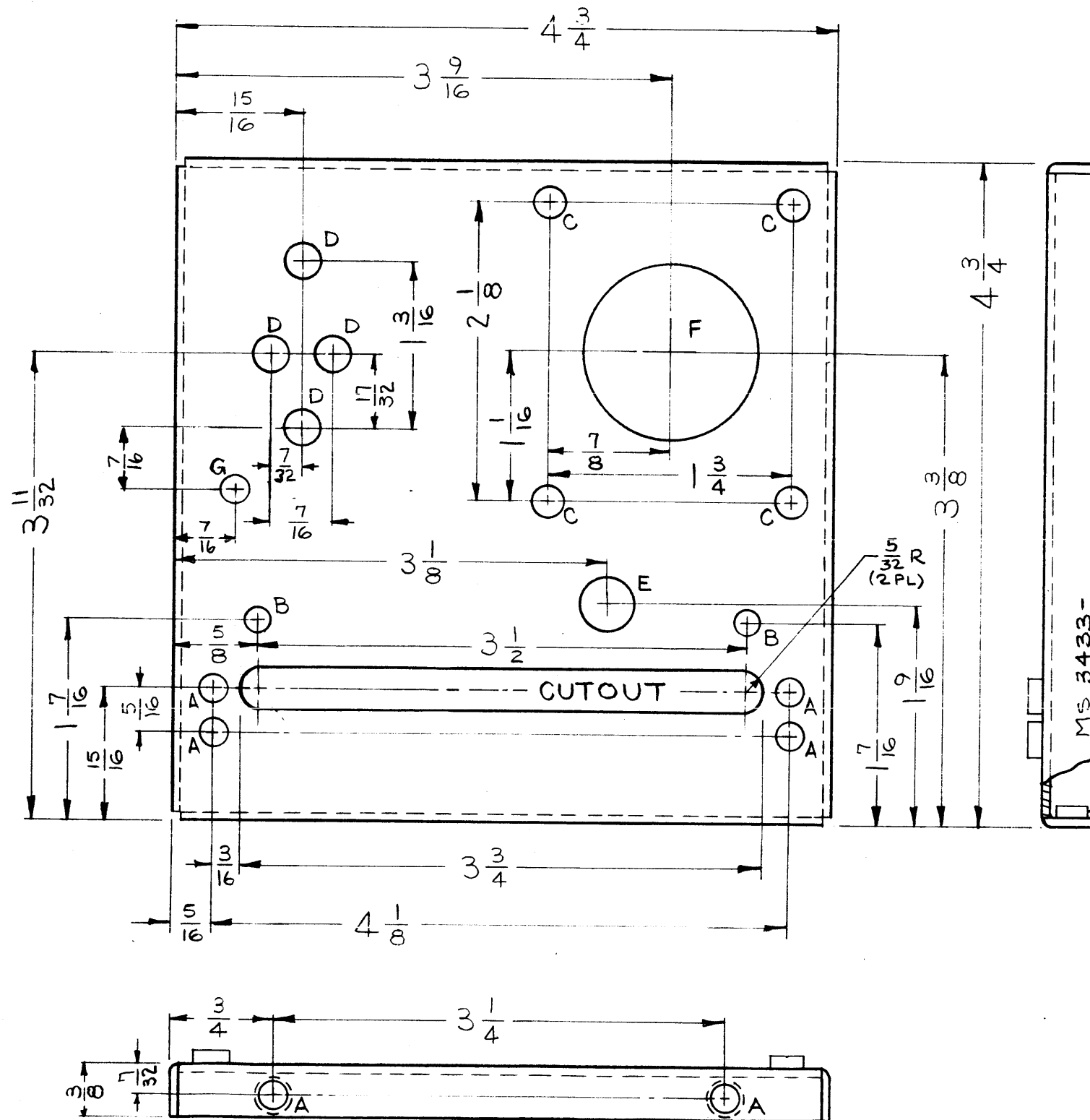
REQ'D.	ITEM	PART NUMBER	DESCRIPTION	SYMBOL
X	2	GL-101	CEMENT, PLIOBOND	
2	1	IM-179-10	INSULATION, RECT., FISHPAPER	

M. GELMAN		LIST OF MATERIAL	
MATERIAL .032THK ALUMINUM 5052-H32		THE TECHNICAL MATERIEL CORP. MAMARONECK, NEW YORK	
FINISH S-404 IRIDITE 14-2 AL-COAT		TITLE COVER, SIDE-MOUNTING FRAME	
UNLESS OTHERWISE SPECIFIED DIMENSIONS ARE IN INCHES AND INCLUDE CHEMICALLY APPLIED OR PLATED FINISHES		DRAWN J. LESHINSKI	DATE 11/21/63
		CHECKED @	DATE 5-7-64
		ELECT. DES. TMC	DATE 12-3-63
		MECH. DES. J. 35	DATE 12-3-63
		FINAL APPROVAL MS 3424 0	
		SHEET	
		REV. LTR.	

Q'TY./UNIT	MODEL USED ON	ASS'Y. NO.
1	VLR-1	AX 431
1	VLR-1	AX 424
SCALE	CODE	
1:1	A	

THE CONTENTS OF THIS DRAWING ARE THE EXCLUSIVE PROPERTY OF THE TECHNICAL MATERIEL CORP. ITS UNAUTHORIZED USE OR REPRODUCTION IN WHOLE OR IN PART IS STRICTLY FORBIDDEN.

NOTES



MS 3433 B

REVISIONS

SYM	DESCRIPTION	DATE	E.M.N. NO.	DRAFT	CHKD	APPR
O	ORIGINAL RELEASE FOR PRODUCTION	5-11-64	0	A.M.		
A	5/32 R (2PL) ADDED TO CUTOUT	8.4.64	11216	WB		
B	6" HOLE & LOC. DIM. APP; MODEL CHART UPDATED	3-29-65	13776	P.F.		

LEGEND

HOLE	DESCRIPTION	REQ
A	.191-.194 DIA.	6
B	.166 DIA	2
C	7/32 DIA.	4
D	1/4 DIA.	4
E	3/8 DIA.	1
F	1 1/4 DIA.	1
G	13/64" DIA	1

- UNLESS OTHERWISE SPECIFIED:**
1. USE MATERIAL THICKNESS FOR MAXIMUM RADIUS ON ALL BENDS.
 2. ALL ANGULAR BENDS 90°.
 3. REMOVE ALL BURRS AND SHARP EDGES.
 4. MOUNT INSERTS AFTER FINISHING.

REF: LD-1337

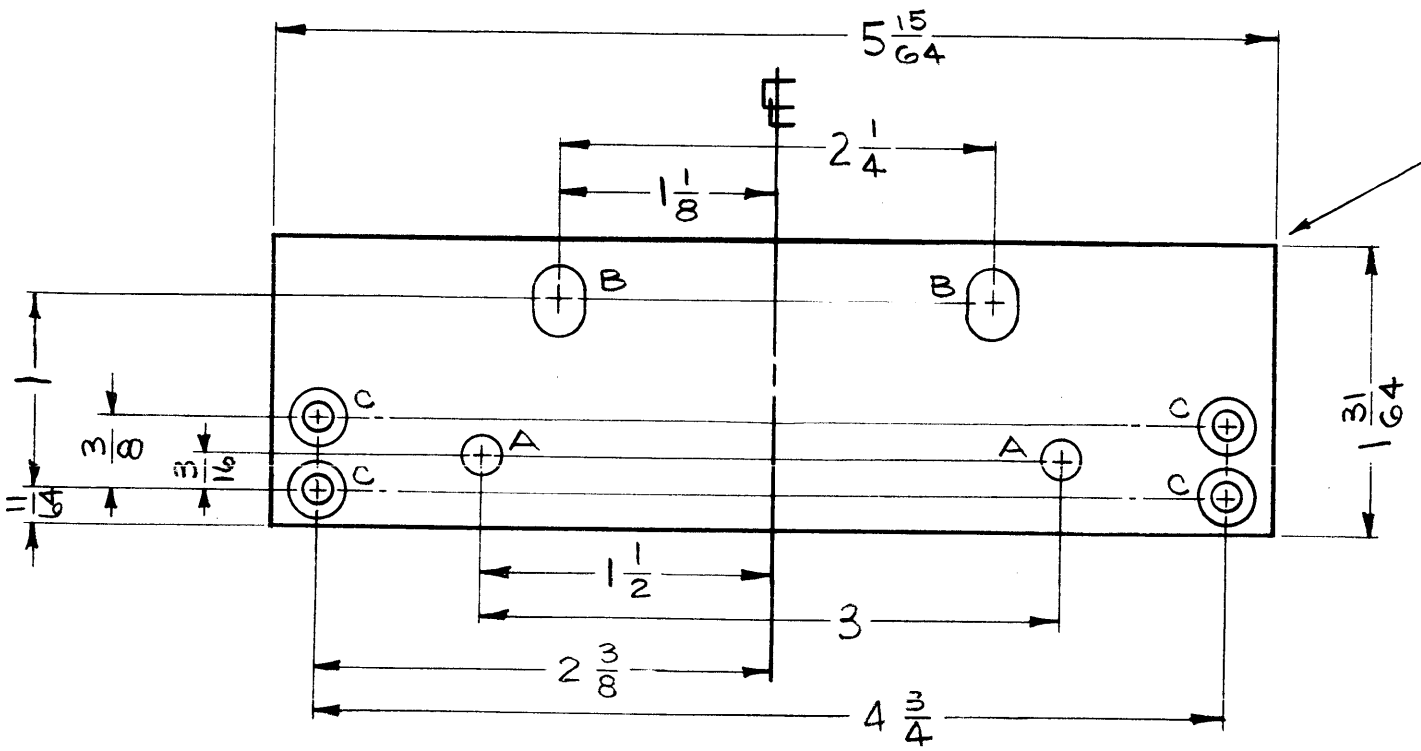
6	1	NT-129-632-4	NUT, ROUND, SWAGE TYPE	A	
REQ'D.	ITEM	PART NUMBER	DESCRIPTION	SYMBOL	
M. GELLMAN LIST OF MATERIAL					
MATERIAL .064, ALUMINUM 5052-H32			THE TECHNICAL MATERIEL CORP. MAMARONECK, NEW YORK		
FINISH IRIDITE PER TMC SPEC. S-404			TITLE CHASSIS, ELECTRICAL-FRONT (POWER SUPPLY)		
UNLESS OTHERWISE SPECIFIED DIMENSIONS ARE IN INCHES AND INCLUDE CHEMICALLY APPLIED OR PLATED FINISHES			DRAWN <i>G. L...</i> DATE 1-2-63 CHECKED <i>@</i> DATE 5-5-64 ELECT. DES. <i>MS</i> DATE MECH. DES. <i>M. Felina</i> DATE 5-5-64	FINAL APPROVAL <i>RK</i> DATE MS 3433 SHEET	DATE B REV. LTR.
DECIMALS	TOLERANCES	FRACTIONS			
.X ± .05 .XX ± .01 .XXX ± .005		± 1/64 ANGLES ± 0° 30'			

1	LFS A-1, LFS B-1	AX433
1	VLRA-1	AX433
Q'TY./UNIT	MODEL USED ON	ASS'Y. NO.
SCALE 1:1	CODE A	
THE CONTENTS OF THIS DRAWING ARE THE EXCLUSIVE PROPERTY OF THE TECHNICAL MATERIEL CORP. ITS UNAUTHORIZED USE OR REPRODUCTION IN WHOLE OR IN PART IS STRICTLY FORBIDDEN.		

NOTES

MS-3451

REVISIONS						
SYM	DESCRIPTION	DATE	E.M.N. NO.	DRAFT	CHKD	APPD



METAL STAMP TMC PART NO.
1/8 HIGH GOTHIC, ON REAR (MS-3451)

LEGEND		
HOLE	DESCRIPTION	REQ
A	3/16 DIA.	2
B	1/4 x 3/8 SLOTS	2
C	.144 DIA. HOLE, C'SINK 82° TO .284 DIA.	4

FRONT OF PANEL SHOWN

MACHINING:

1. MILL ALL EDGES.
2. HOLES MUST BE DRILLED, UNLESS OTHERWISE SPECIFIED.
3. LATERAL BOW OF PANEL MUST BE KEPT TO .031 TOLERANCE.
4. PANEL MUST BE FREE OF ALL MACHINING MARKS, GOUGES AND SCRATCHES. IF NECESSARY, SAND FRONT OF PANEL WITH NO. 120 GRIT SANDPAPER.

FINISH NOTES:

1. S404 - IRIDIPT 14-2 AL-COAT.
2. S114 - ZINC CHROMATE PRIMER) FRONT AND
3. S115 - SMOOTH GRAY ENAMEL) EDGES ONLY

NOTES

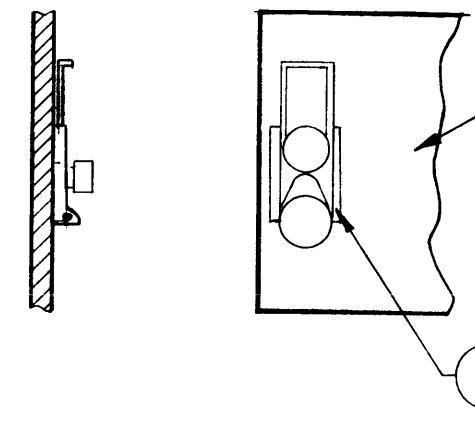
2		
QTY./UNIT	MODEL USED ON	ASSY. NO.
SCALE 1:1	CODE	

THE CONTENTS OF THIS DRAWING ARE THE EXCLUSIVE PROPERTY OF THE TECHNICAL MATERIEL CORP. ITS UNAUTHORIZED USE OR REPRODUCTION IN WHOLE OR IN PART IS STRICTLY FORBIDDEN.

REF: TELE-SIGNAL MODEL 139

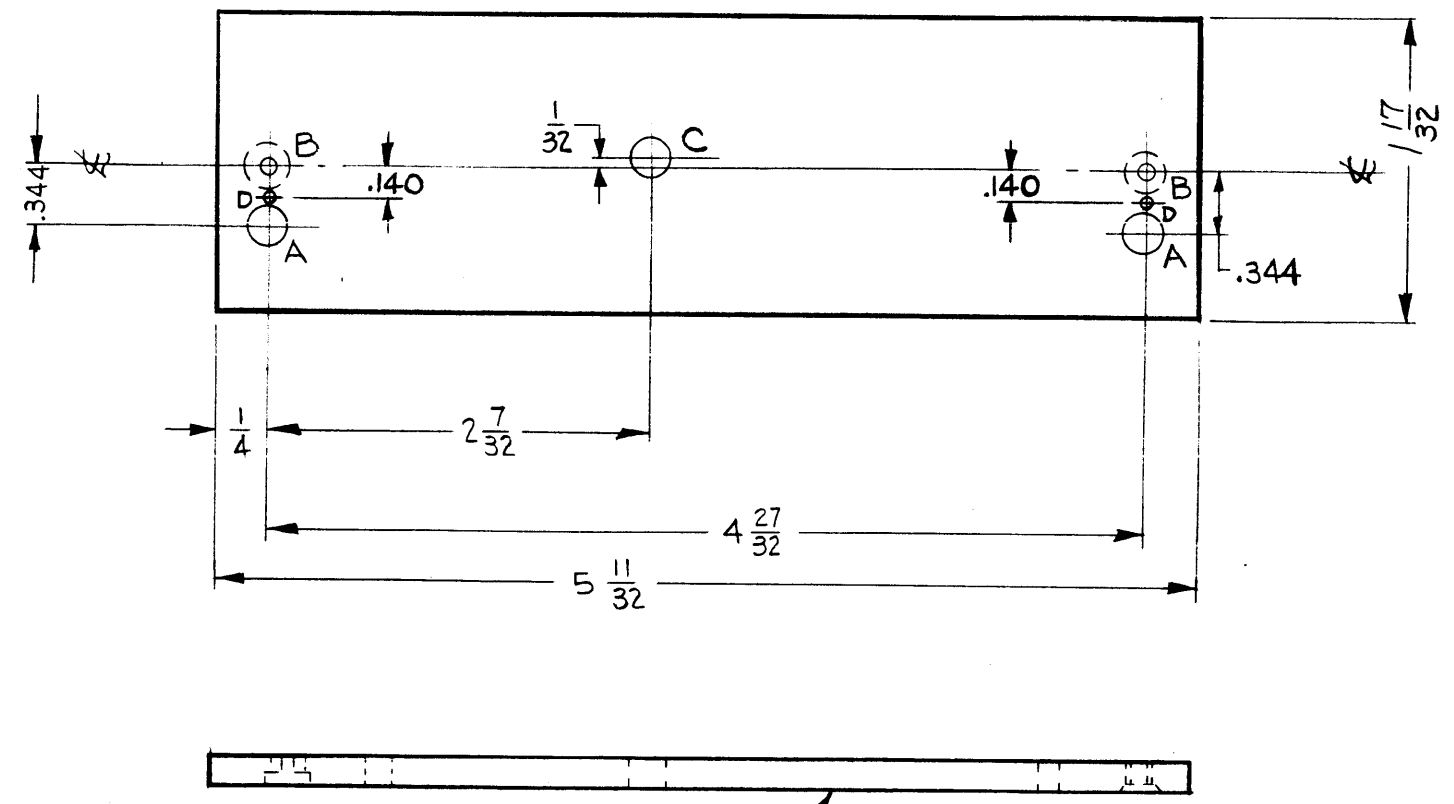
REQ'D.	ITEM	PART NUMBER	DESCRIPTION	SYMBOL
I. JOHNSON LIST OF MATERIAL				
MATERIAL 3/16, ALUMINUM 2024-T3			THE TECHNICAL MATERIEL CORP. MAMARONECK, NEW YORK	
FINISH SEE FINISH NOTES			TITLE PANEL, FRONT, SHELF	
UNLESS OTHERWISE SPECIFIED DIMENSIONS ARE IN INCHES AND INCLUDE CHEMICALLY APPLIED OR PLATED FINISHES			DRAWN <i>G. Senem</i> DATE 7-25-63 CHECKED <i>[Signature]</i> DATE 7-26-63 ELECT. <i>[Signature]</i> DATE 7-27-63 MECH. <i>[Signature]</i> DATE 7-27-63	FINAL APPROVAL <i>[Signature]</i> DATE 7-27-63 MS-3451 SHEET
DECIMALS .X ± .05 .XX ± .01 .XXX ± .005 TOLERANCES FRACTIONS ± 1/64 ANGLES ± 0° 30'			REV. LTR.	

REVISIONS						
SYM	DESCRIPTION	DATE	E.M.N. NO.	DRAFT	CHKD	APPD
A	"D" HOLE ADD., IT. 1 WAS FS-119-1, "A" HOLE WAS .228 DIA	9.14.64	12334	BB	JL	TKA



MOUNT ITEMS 1 THRU 4 ON FRONT OF PANEL AS SHOWN USING "A", "B" AND "D" HOLES - AFTER FINISH.

FRONT OF PANEL SHOWN



HOLE LEGEND		
HOLE	DESCRIPTION	REQD
A	13/64 DIA.	2
B	.082 DIA. C'BORE 3/16 DIA X.039 DEEP - REAR SIDE -	2
C	3/16 DIA.	1
D	1/16 DIA	2

MACHINING:

1. MILL ALL EDGES.
2. HOLES MUST BE DRILLED, UNLESS OTHERWISE SPECIFIED.
3. LATERAL BOW OF PANEL MUST BE KEPT TO .031 TOLERANCE.
4. PANEL MUST BE FREE OF ALL MACHINING MARKS, GOUGES AND SCRATCHES. IF NECESSARY, SAND FRONT OF PANEL WITH NO. 120 GRIT SANDPAPER.

METAL STAMP TMC PART NO. 1/8 HIGH GOTHIC ON REAR OF PANEL

FINISH NOTES:

1. S404 - IRIDITE 14-2 AL-COAT.
2. S114 - ZINC CHROMATE PRIMER) FRONT AND
3. S115 - SMOOTH GRAY ENAMEL) EDGES ONLY

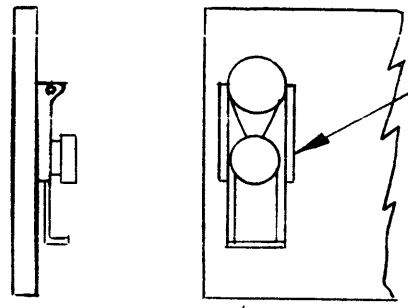
NOTES

1	AP-114	
Q'TY./UNIT	MODEL USED ON	ASS'Y. NO.
SCALE	CODE	
NONE	A	
THE CONTENTS OF THIS DRAWING ARE THE EXCLUSIVE PROPERTY OF THE TECHNICAL MATERIEL CORP. ITS UNAUTHORIZED USE OR REPRODUCTION IN WHOLE OR IN PART IS STRICTLY FORBIDDEN.		

REQ'D.	ITEM	PART NUMBER	DESCRIPTION	SYMBOL
2	4	FS-120-2	POST, SNAPSLIDE FASTENER	A-B
4	3	WA-131-22	WASHER, SPRING TENSION	A-B
2	2	FS-118-1	LATCH, SNAPSLIDE FASTENER	A-B
2	1	FS-119-2	LATCHGUIDE, SNAPSLIDE FASTENER	A-B

JORDAN LIST OF MATERIAL E 3037-

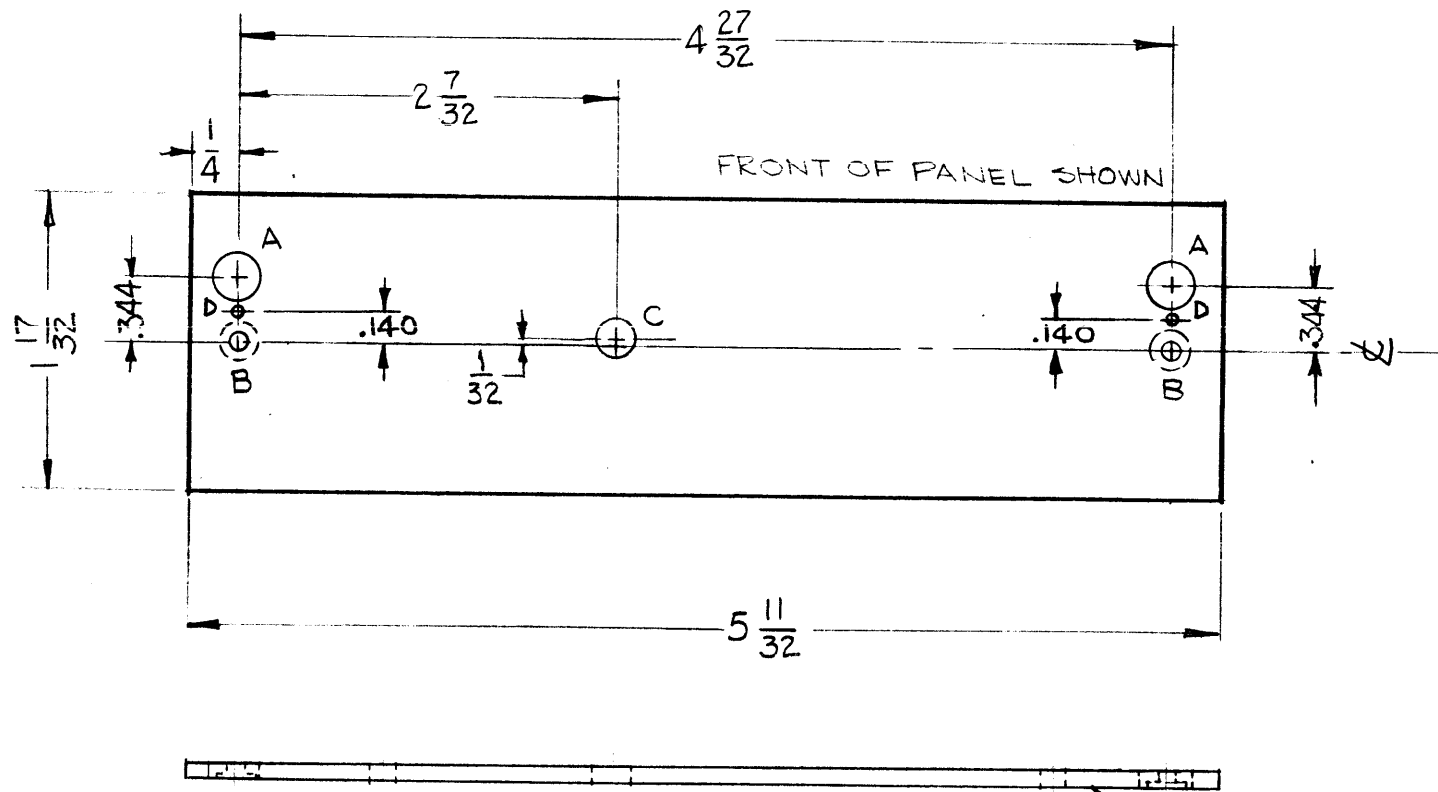
MATERIAL .081 THK ALUM. 2024-T3		THE TECHNICAL MATERIEL CORP. MAMARONECK, NEW YORK			
FINISH SEE FINISH NOTE		TITLE PANEL, FRONT, BLANK X MTR			
UNLESS OTHERWISE SPECIFIED DIMENSIONS ARE IN INCHES AND INCLUDE CHEMICALLY APPLIED OR PLATED FINISHES		DRAWN <i>[Signature]</i>	DATE 8-28-63	FINAL APPROVAL <i>[Signature]</i>	DATE
DECIMALS .X ± .05 .XX ± .01 .XXX ± .005		CHECKED <i>[Signature]</i>	DATE 8-30-63	MS-3489	
FRACTIONS ± 1/64 ANGLES ± 0° 30'		ELECT. DES. RKOHN	DATE 1-16-64	A	
TOLERANCES		MECH. DES. W. JORDAN	DATE 1/10/64	SHEET	
				REV. LTR.	



MOUNT ITEM ① ② ③ ④ ON FRONT OF PANEL AS SHOWN USING 'A' 'B' & 'D' HOLES AFTER FINISH.

MS-3490 B

REVISIONS					
SYM	DESCRIPTION	DATE	E.M.N. NO.	DRAFT	CHKD APPD
A	IT.4 WAS FS120-2	7.13.64	11805	WJB	<i>[Signature]</i>
B	*D HOLE ADD., IT.1 WAS FS-119-1, *A HOLE WAS .228 DIA	9.14.64	12334	WJB	<i>[Signature]</i>



HOLE	DESCRIPTION	REQ'D
A	13/64 DIA.	2
B	.082 DIA. C'BORE 3/16 DIA. X.039 DEEP- REAR SIDE	2
C	3/16 DIA.	1
D	1/16 DIA.	2

METAL STAMP TMC PART No. (MS-3490) 1/8 HIGH GOTHIC WITH LATEST REVISION LETTER, ON REAR OF PANEL.

- ~MACHINING~
 1-LATERAL BOW OF PANEL MUST BE KEPT WITHIN 1/32.
 2-MILL ALL EDGES.
 3-HOLES MUST BE DRILLED.
 4-PANEL MUST BE FREE OF ALL MACHINING MARKS, GOUGES & SCRATCHES. IF NECESSARY, SAND FRONT OF PANEL WITH No.120 SANDPAPER.

- ~FINISH NOTES~
 S404 - IRIDITE 14-2 AL-COAT
 S114 - ZINC CROMATE PRIMER
 S115 - SMOOTH GREY ENAMEL } FINISH ALL OVER

NOTES

1	AD-115	
Q'TY./UNIT	MODEL USED ON	ASS'Y. NO.
SCALE 1:1	CODE A	
THE CONTENTS OF THIS DRAWING ARE THE EXCLUSIVE PROPERTY OF THE TECHNICAL MATERIEL CORP. ITS UNAUTHORIZED USE OR REPRODUCTION IN WHOLE OR IN PART IS STRICTLY FORBIDDEN.		

REQ'D.	ITEM	PART NUMBER	DESCRIPTION	SYMBOL
2	4	FS-120-1	POST, SNAPSLIDE FASTENER	A-B
4	3	WA-131-22	WASHER, SPRING TENSION	A-B
2	2	FS-118-1	LATCH, SNAPSLIDE FASTENER	A-B
2	1	FS-119-2	LATCHGUIDE, SNAPSLIDE FASTENER	A-B

JORDAN LIST OF MATERIAL				
MATERIAL .081 THK. ALUMINUM 2024-T3		THE TECHNICAL MATERIEL CORP. MAMARONECK, NEW YORK		
FINISH SEE FINISH NOTE		TITLE PANEL, FRONT, BLANK RCVR		
UNLESS OTHERWISE SPECIFIED DIMENSIONS ARE IN INCHES AND INCLUDE CHEMICALLY APPLIED OR PLATED FINISHES		DRAWN G.D.L.	DATE 8-28-63	FINAL APPROVAL <i>[Signature]</i>
DECIMALS .X ± .05 .XX ± .01 .XXX ± .005		CHECKED <i>[Signature]</i>	DATE 8-30-63	
FRACTIONS ± 1/64 ANGLES ± 0° 30'		ELECT. DES. RKOHN	DATE 1-16-64	MS-3490
TOLERANCES		MECH. DES. W. JORDAN	DATE 1/16/64	B
			SHEET	REV. LTR.

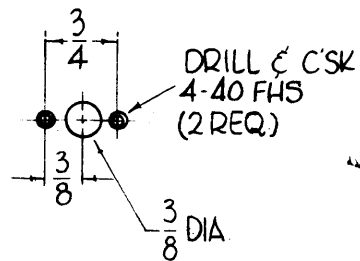
HOLES

A - 15/64 DIA.

REQ

4

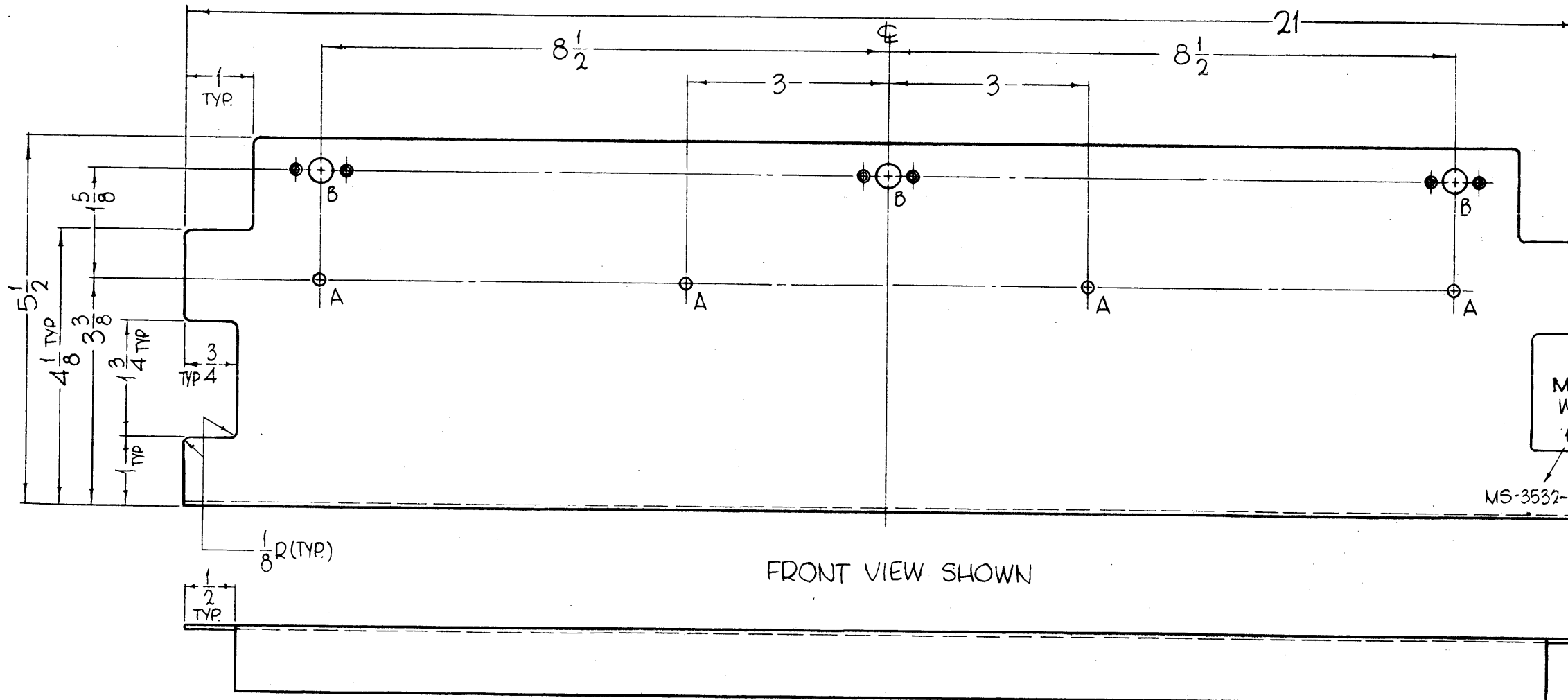
B - 3 REQ.
AS SHOWN
ON FRONT
OF PLATE.



MS-3532

REVISIONS

SYM	DESCRIPTION	DATE	E.M.N. NO.	DRAFT	CHKD	APPD
X1	DWG MADE 3532-1 AS SHOWN, 3532-2 OPPOSITE HAND	11-9-63				
X2	MS-3532-1, -2 REMOVED, NOTCH ADDED, 1/2 CUT FOR NOTCH WAS 1/P	11-20-63				
X3	1" TYP NOTCH WAS 1/2", 1/2" NOTCH'S ADDED TO BOTTOM LIP.	1-21-64				
Ø	ORIGINAL RELEASE FOR PRODUCTION	3/25/69	Ø			JDe



METAL STAMP TMC PART NO.
W/LATEST REVISION LETTER
1/8 HIGH GOTHIC.

MS-3532-

FRONT VIEW SHOWN

UNLESS OTHERWISE SPECIFIED:

1. USE MATERIAL THICKNESS FOR MAXIMUM RADIUS ON ALL BENDS.
2. ALL ANGULAR BENDS 90°.
3. REMOVE ALL BURRS AND SHARP EDGES.

NOTES

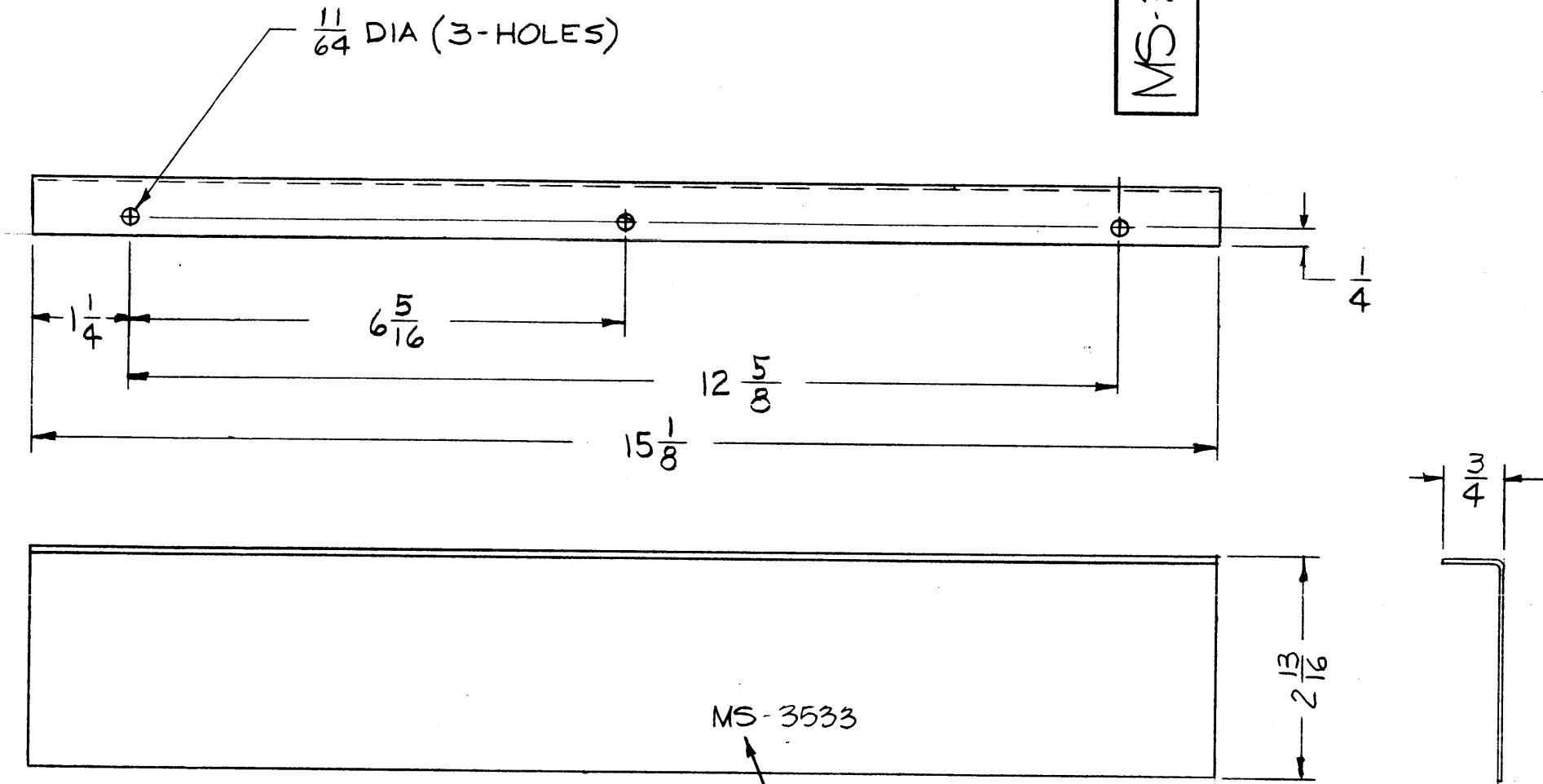
THE CONTENTS OF THIS DRAWING ARE THE EXCLUSIVE PROPERTY OF THE TECHNICAL MATERIEL CORP. ITS UNAUTHORIZED USE OR REPRODUCTION IN WHOLE OR IN PART IS STRICTLY FORBIDDEN.

REQ'D.	ITEM	PART NUMBER	DESCRIPTION	SYMBOL
F. BUDETTI LIST OF MATERIAL				
MATERIAL			THE TECHNICAL MATERIEL CORP. MAMARONECK, NEW YORK	
.064 THICK, ALUMINUM, 5052-H-32			TITLE	
FINISH			PLATE, SHIELD, TRIM	
S-404-IRIDITE, 14-2 AL-COAT			DRAWN	
UNLESS OTHERWISE SPECIFIED			John C. Biele	DATE
DIMENSIONS ARE IN INCHES AND INCLUDE			10-7-63	FINAL APPROVAL
CHEMICALLY APPLIED OR PLATED FINISHES			1-21-64	JCB
DECIMALS			ELECT. DES.	DATE
.X ± .05				
.XX ± .01			MECH. DES.	DATE
.XXX ± .005				
TOLERANCES			MS-3532	
FRACTIONS			SHEET	
± 1/64			REV. LTR.	
ANGLES				
± 0° 30'				

MS-3533 0

REVISIONS

SYM	DESCRIPTION	DATE	E.M.N. NO.	DRAFT	CHKD	APPD
0	ORIGINAL RELEASE FOR PRODUCTION	5-27-64	0	A.M.		



MS-3533

METAL STAMP TMC PART NO.
1/8 HIGH GOTHIC.
WITH LATEST REVISION LETTER

UNLESS OTHERWISE SPECIFIED:

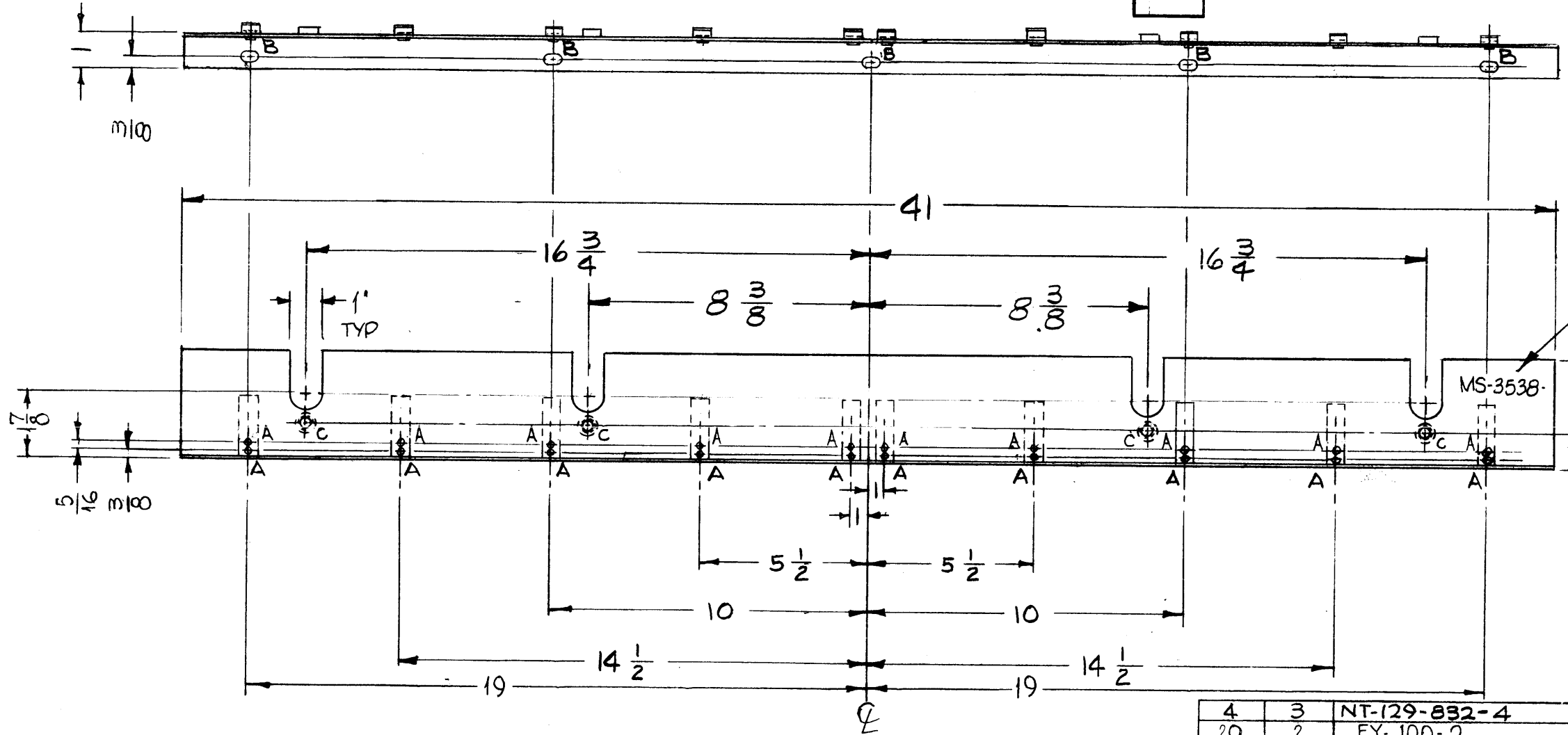
1. USE MATERIAL THICKNESS FOR MAXIMUM RADIUS ON ALL BENDS.
2. ALL ANGULAR BENDS 90°.
3. REMOVE ALL BURRS AND SHARP EDGES.
4. MOUNT INSERTS AFTER FINISHING.

REQ'D.	ITEM	PART NUMBER	DESCRIPTION	SYMBOL
LIST OF MATERIAL				
MATERIAL .064 THICK ALUMINUM 5052-H32			THE TECHNICAL MATERIEL CORP. MAMARONECK, NEW YORK	
FINISH S404- IRIDITE 14-2 AL COAT			TITLE SHIELD, SIDE WINDOW	
QTY./UNIT 2		MODEL USED ON GPT 200K	ASS'Y. NO. AX-395	
SCALE 1=2		CODE		
UNLESS OTHERWISE SPECIFIED DIMENSIONS ARE IN INCHES AND INCLUDE CHEMICALLY APPLIED OR PLATED FINISHES			DRAWN A. TURSI	DATE 10-7-64
DECIMALS .X ± .05 .XX ± .01 .XXX ± .005			CHECKED AA	DATE 9/8/64
FRACTIONS ± 1/64 ANGLES ± 0° 30'			ELECTRICAL G.B.	DATE 2/3/64
TOLERANCES			MECH. DES hca	DATE
THE CONTENTS OF THIS DRAWING ARE THE EXCLUSIVE PROPERTY OF THE TECHNICAL MATERIEL CORP. ITS UNAUTHORIZED USE OR REPRODUCTION IN WHOLE OR IN PART IS STRICTLY FORBIDDEN.				FINAL APPROVAL RAC
NOTES				MS-3533
				0
				REV. LTR.

MS-3538

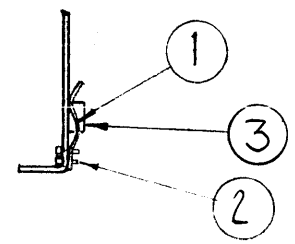
REVISIONS

SYM	DESCRIPTION	DATE	E.M.N. NO.	DRAFT	CHKD	APPD
X1	B" SLOTS WERE VERTICAL					
X2	1-7/8 WAS 2"					
X3	1" SLOTS WERE 7/8	1-2-64				
X4	"C" HOLES ADDED	4-22-64				
X5	ITEM 2 WAS EY-100-7; A HOLES WERE .067, 5/16 WAS 1/4, 3/8 WAS 5/16	5-17-64		SRG		
0	ORIGINAL RELEASE FOR PRODUCTION	5-18-64		SRG		
A	NT'S RELOCATED TO OPPOSITE SIDE OF BRACKET	7.13.64	11754	WJB		



HOLE	DESCRIPTION	REQ'D.
A	.125 DIA	20
B	13/64 X 13/32 SLOT	9
C	.221-.224 DIA.	4

METAL STAMP TMC PART NO. 1/8 HIGH GOTHIC W/LATEST REV. LETTER.



UNLESS OTHERWISE SPECIFIED:

1. USE MATERIAL THICKNESS FOR MAXIMUM RADIUS ON ALL BENDS.
2. ALL ANGULAR BENDS 90°.
3. REMOVE ALL BURRS AND SHARP EDGES.
4. MOUNT INSERTS AFTER FINISHING.

NOTES

1	GPT 200K	AX395
Q'TY./UNIT	MODEL USED ON	ASS'Y. NO.
SCALE 1/4 = 1	CODE A	

THE CONTENTS OF THIS DRAWING ARE THE EXCLUSIVE PROPERTY OF THE TECHNICAL MATERIEL CORP. ITS UNAUTHORIZED USE OR REPRODUCTION IN WHOLE OR IN PART IS STRICTLY FORBIDDEN.

REQ'D.	ITEM	PART NUMBER	DESCRIPTION	SYMBOL
4	3	NT-129-832-4	NUT ROUND, SWAGE TYPE	
20	2	EY-100-2	EYLET, FLAT FLANGE	
10	1	MS-3546	SPRING, CLIP	

F. BUDETTI

LIST OF MATERIAL

MATERIAL
.081 TH'K ALUMINUM
5052-H32

FINISH
S404 IRIDITE
14-2 AL-COAT

THE TECHNICAL MATERIEL CORP.
MAMARONECK, NEW YORK

BRACKET, PA. SHIELD

UNLESS OTHERWISE SPECIFIED
DIMENSIONS ARE IN INCHES AND INCLUDE
CHEMICALLY APPLIED OR PLATED FINISHES

DRAWN	ATURSI	DATE	11-11-63	FINAL APPROVAL		DATE	
CHECKED	aa	DATE					
ELECT. DES.	OB	DATE	3/18/64				
MECH. DES.	me 2/15/64	DATE					

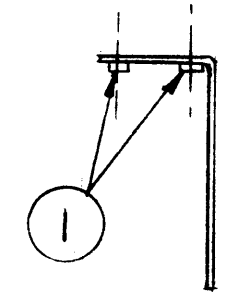
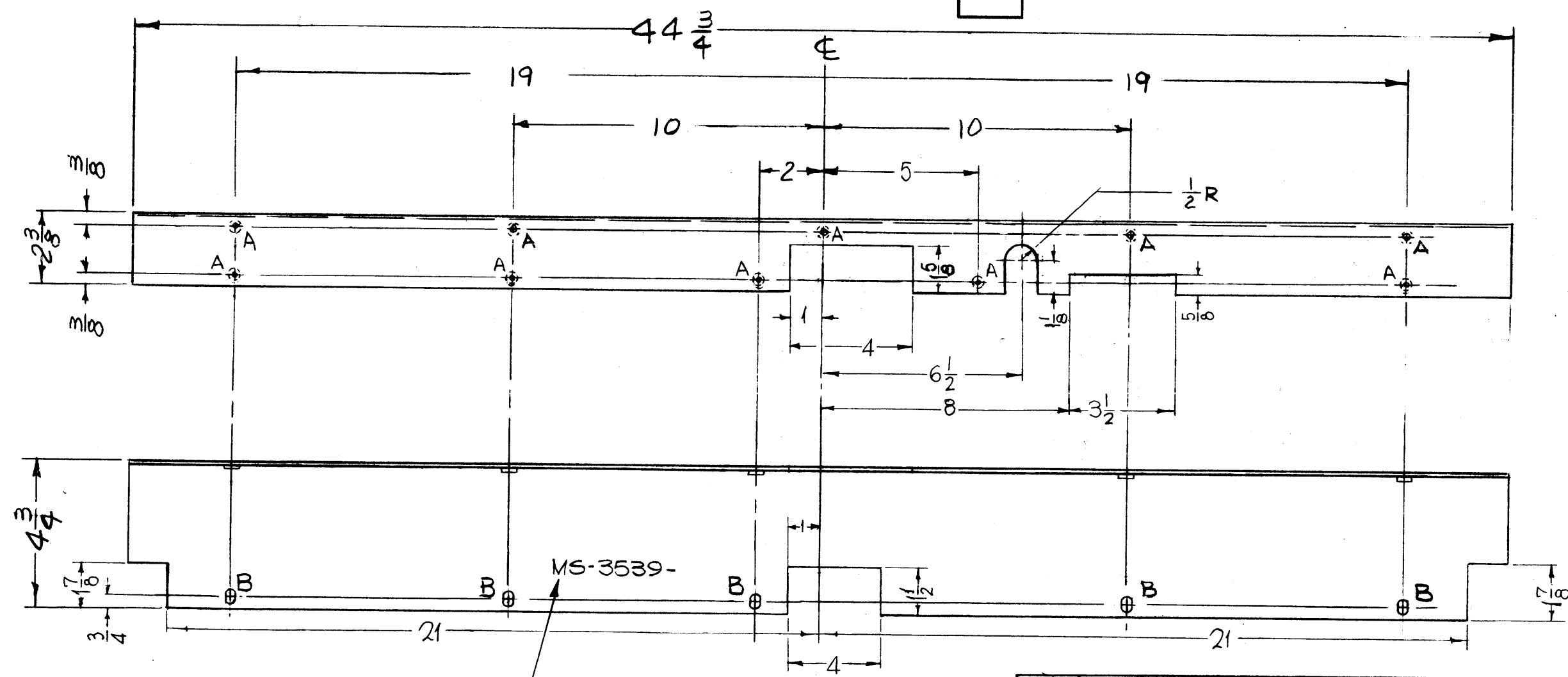
DECIMALS	TOLERANCES	FRACTIONS
.X ± .05		± 1/64
.XX ± .01		ANGLES
.XXX ± .005		± 0° 30'

MS-3538	A
SHEET	REV. LTR.

HOLE	DESCRIPTION	REQ'D.
A	.221-.224 DIA	10
B	13/64 X 13/32 SLOT	5

MS-3539 A

REVISIONS						
SYM	DESCRIPTION	DATE	E.M.N. NO.	DRAFT	CHKD	APPD
X1	21" WAS 21 1/8, BOTTOM VIEW 4" WAS 3", 1" WAS 1 1/2, 1 1/2 WAS 1 3/8, 1 7/8 WAS 1 1/2, 1 7/8 WAS 1 1/4, 3 1/2 WAS 2 3/8, 5 WAS 6, 6 1/2 WAS 6					
X2	1-7/8 NOTCH WAS 1-1/2	2-18-64				
0	ORIGINAL RELEASE FOR PRODUCTION	5-18-64		SRG		
A	5 "B" HOLES CHANGED TO "A" HOLES ON 2 3/8" LIP	7.13.64	11754	WJB	JCS	QO



- UNLESS OTHERWISE SPECIFIED:**
- USE MATERIAL THICKNESS FOR MAXIMUM RADIUS ON ALL BENDS.
 - ALL ANGULAR BENDS 90°.
 - REMOVE ALL BURRS AND SHARP EDGES.
 - MOUNT INSERTS AFTER FINISHING.

METAL STAMP TMC PART NO. 1/8 HIGH GOTHIC, WITH LATEST REVISION LETTER.

1	GPT-200K	AX 395
Q'TY./UNIT	MODEL USED ON	ASS'Y. NO.
SCALE	CODE	
1/4 = 1		

THE CONTENTS OF THIS DRAWING ARE THE EXCLUSIVE PROPERTY OF THE TECHNICAL MATERIEL CORP. ITS UNAUTHORIZED USE OR REPRODUCTION IN WHOLE OR IN PART IS STRICTLY FORBIDDEN.

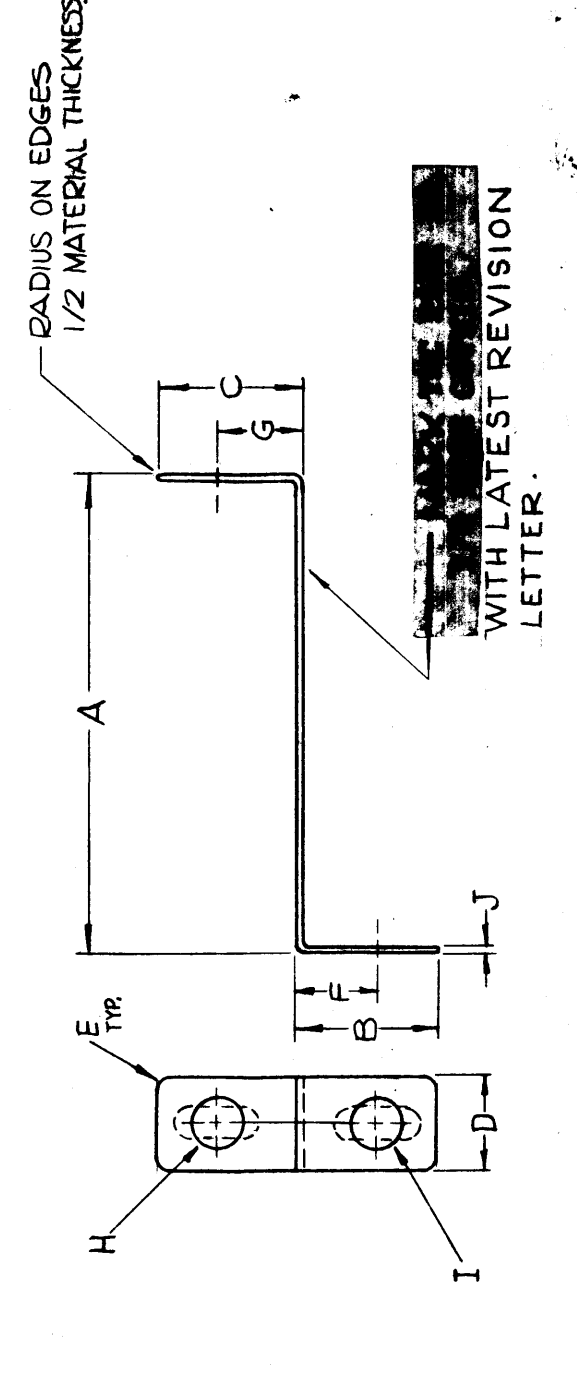
10	1	NT-129-832-4	NUT, ROUND, SWAGE TYPE	
REQ'D.	ITEM	PART NUMBER	DESCRIPTION	SYMBOL
F. BUDETTI LIST OF MATERIAL				
MATERIAL .081 TH'K ALUMINUM 5052-H32			THE TECHNICAL MATERIEL CORP. MAMARONECK, NEW YORK	
FINISH S404 IRIDITE 14-2 AL-COAT			TITLE BRACKET, PA. SHIELD	
UNLESS OTHERWISE SPECIFIED DIMENSIONS ARE IN INCHES AND INCLUDE CHEMICALLY APPLIED OR PLATED FINISHES			DRAWN A TURS I	DATE 11-12-63
			CHECKED aa	DATE
			ELECT. DES. OB	DATE 3/18/64
			MECH. DES. WJB	DATE 3/18/64
DECIMALS .X ± .05 .XX ± .01 .XXX ± .005			TOLERANCES FRACTIONS ± 1/64 ANGLES ± 0° 30'	
MS-3539				A
SHEET				REV. LTR.

NOTES

STANDARD DRAWING

TMC NO.	A	B	C	D	E RADIUS	F	G	H	I	J	MATERIAL	FINISH	USED ON
MS-3542-1	2-1/2	3/4	11/16	3/8	3/16	1	13/32	9/32	15/64	.031	COPPER	S-245 SILVER PLATE	
MS-3542-2	1-3/8	1-1/4	1-9/16	1	1/8	3/4	25/32	1/4	1/4	.031	COPPER	S-245 SILVER PLATE	
MS-3542-3	1	2	1-1/2	3/8	3/16	1-3/16	1-3/16	9/32	15/64	.031	COPPER	S-245 SILVER PLATE	A-2823
MS-3542-4	7/64	1/2	7/8	3/4	1/16	—	7/16	3/8x7/32	—	.031	COPPER	—	TER100K
MS-3542-5	1/4	7/8	1-5/32	1/2	1/4	5/8	29/32	11/64	15/64	.030	COPPER	—	A-3259 (200)
MS-3542-6	1-23/32	9/16	3/8	1/2	1/16	5/16	—	—	3/16	.064	ALUMINUM	S-404 YELLOW IRIDIUM	AK SWR
MS-3542-7	1-1/4	1-1/2	1	1	1/32	1	1/2	15/64	15/64	.031	COPPER	—	TER-100K
MS-3542-8	7/16	1/2	5/8	1/2	1/32	1/4	5/16	1/64	1/64	.031	ALUMINUM	S-404 YELLOW IRIDIUM	TEST-10K
MS-3542-9	3/4	3/4	11/16	3/4	1/8	3/8	11/32	3/16	9/32	1/16	COPPER	S-245 SILVER PLATE	HVRA-1
MS-3542-10	1	7/8	1-7/16	3/4	1/8	1/2	1-1/16	15/64	13/64	.063	HR. COPPER	S-245 SIL. PL. KOTE	KIT 257 (2)
MS-3542-11	3/16	1-1/8	1-3/8	5/8	3/16	3/4	1	13/64	15/64	1/8	COPPER	S-245 SIL. PL. KOTE	LPGA-1
MS-3542-12	5/8	11/16	9/16	3/8	1/16	1/2	3/8	5/32	7/32	.031	HR. COPPER	S-245 SIL. PL. KOTE	LPGA-10K-2
MS-3542-13	3/8	9/16	7/16	3/8	1/16	7/16	5/16	5/32	7/32	.031	HR. COPPER	S-245 SIL. PL. KOTE	LPGA-10K-4
MS-3542-14	3-1/16	5/8	3/8	5/8	1/8	3/8	—	—	3/16	1/16	ALUMINUM	S-404 YELLOW IRIDIUM	SME-A-1
MS-3542-15	9	1-1/2	1-1/2	1-1/2	1/8	1	1/4x1/2	1/4x1/2	1/8	1/8	ALUMINUM	S-404 YELLOW IRIDIUM	BCT-10KA
MS-3542-16	2	3/4	3/4	1/2	1/16	7/16	7/16	9/32	15/64	.031	HR. COPPER	—	BCT-10KA
MS-3542-17	1-3/4	2-1/8	3/4	3/4	1/16	1-1/2	7/16	3/16x1/2	1/4x1/2	.031	HR. COPPER	—	BCT-10KA

SYM	DESCRIPTION	DATE	E.M.N. NO.	DRAFT	CHKD	APPD
O	ORIGINAL RELEASE FOR PRODUCTION	5-27-64	0	A.M.		
A	MS-3542-8 ADDED	12-15-65	15040	W.V.		90
B	ITEM 9 ADDED	2-2-66	15708	W.V.		90
C	ITEM 10 ADDED, TMC PT. NO. REVISED	5-2-66	16179	L.W.		90
D	MS-3542-11 THRU -14 ADDED	2-16-67	17160	L.W.		90
E	MS-3542-15 ADDED	9-20-67	18317	H.S.		90
F	MS-3542-16, 17 ADDED	11-9-67	18589	H.S.		90



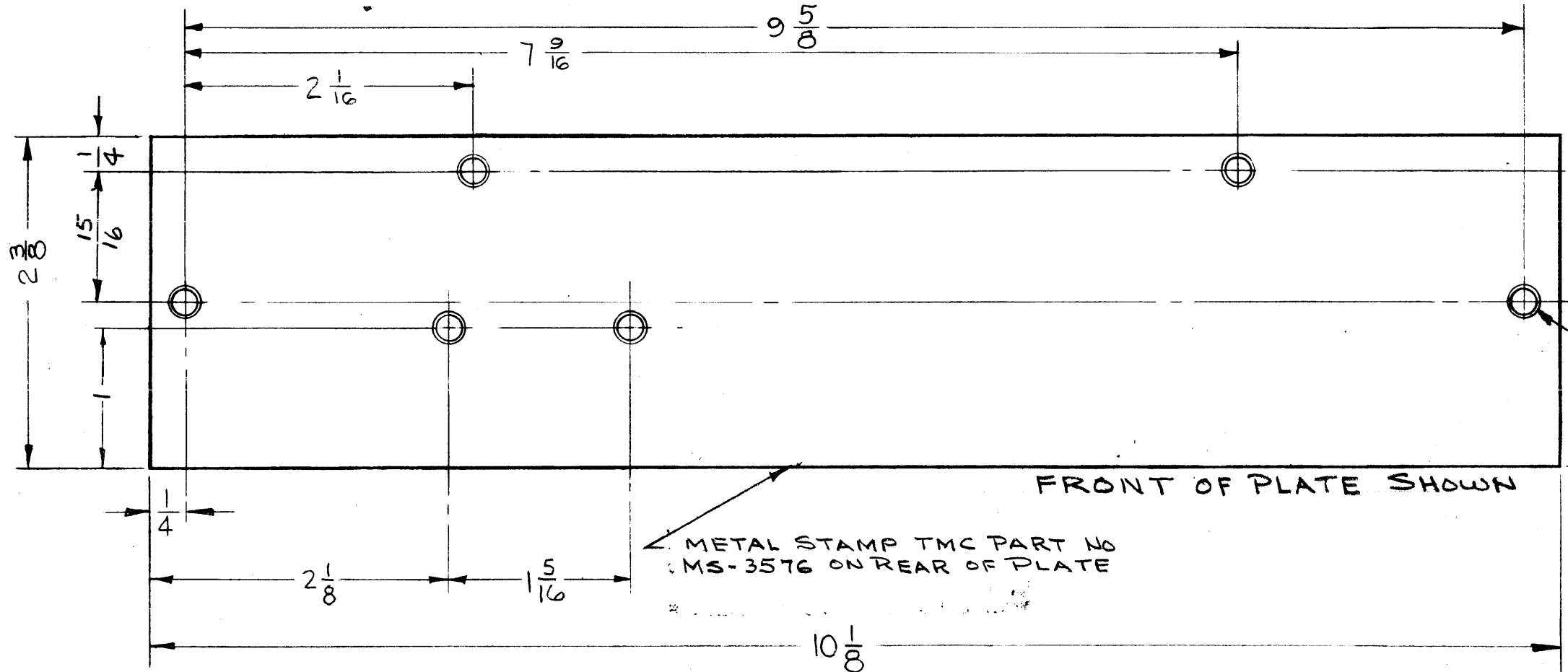
REC'D.	ITEM	PART NUMBER	DESCRIPTION	SYMBOL
F. BUDETTI			LIST OF MATERIAL	
			THE TECHNICAL MATERIEL CORP. MAMARONECK, NEW YORK	
			STRAP, ELECTRICAL	
			SEE CHART	
			SEE CHART	
UNLESS OTHERWISE SPECIFIED DIMENSIONS ARE IN INCHES AND INCLUDE CHEMICALLY APPLIED OR PLATED FINISHES				
DECIMALS X ± .08 .XX ± .01 .XXX ± .005				
FRACTIONS ± 1/64 ANGLES ± 0° 30'				
DRAWN SRG		DATE 12-12-63		DATE
CHECKED AA		DATE		DATE
ELECT. DES. RB		DATE		DATE
MECH. DES. RB		DATE		DATE
		MS-3542		F
		SHEET		REV. LTR.

QTY./UNIT	MODEL USED ON	CODE	ASBY. NO.
SCALE			
THE CONTENTS OF THIS DRAWING ARE THE EXCLUSIVE PROPERTY OF THE TECHNICAL MATERIEL CORP. ITS UNAUTHORIZED USE OR REPRODUCTION IN WHOLE OR IN PART IS STRICTLY FORBIDDEN.			
NOTES			

MS-3576

REVISIONS

SYM	DESCRIPTION	DATE	F M N NO.	DRAFT	CHKD	APPD
-----	-------------	------	-----------	-------	------	------



.144 DIA HOLE, C'SINK 82° x .284 DIA G REQ.

FRONT OF PLATE SHOWN

METAL STAMP TMC PART NO MS-3576 ON REAR OF PLATE

REMOVE ALL BURRS AND SHARP EDGES.

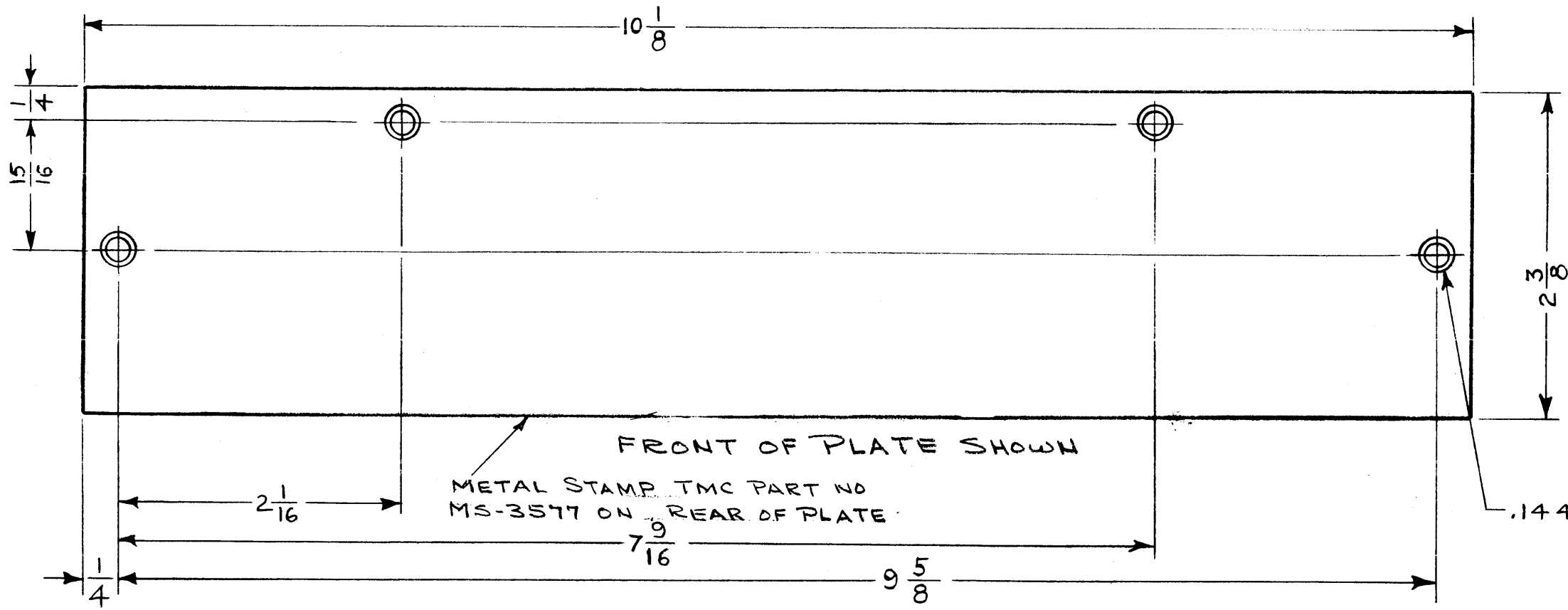
NOTES

1	MNF-1	
T.Y./UNIT	MODEL USED ON	ASS'Y. NO.
SCALE FULL	CODE A	
THE CONTENTS OF THIS DRAWING ARE THE EXCLUSIVE PROPERTY OF THE TECHNICAL MATERIEL CORP. ITS UNAUTHORIZED USE OR REPRODUCTION IN WHOLE OR IN PART IS STRICTLY FORBIDDEN.		

REQ'D.	ITEM	PART NUMBER	DESCRIPTION	SYMBOL
AALTONEN LIST OF MATERIAL				
MATERIAL .064 THK ALUM. 5052 H32			THE TECHNICAL MATERIEL CORP. MAMARONECK, NEW YORK	
FINISH S404-IRIDITE 14-2 AL COAT			TITLE PLATE, SIDE, LEFT	
UNLESS OTHERWISE SPECIFIED DIMENSIONS ARE IN INCHES AND INCLUDE CHEMICALLY APPLIED OR PLATED FINISHES				
DRAWN <i>D. Adams</i>		DATE 4-11-63	FINAL APPROVAL <i>KAC</i>	
CHECKED <i>A. Tunney</i>		DATE 1-10-64	DATE <i>1/10/64</i>	
ELECT. DES. <i>W. G. ...</i>		DATE 1-10-64	MS-3576	
MECH. DES. <i>W. G. ...</i>		DATE 1-10-64	SHEET	
			REV. LTR.	

MS-3577

REVISIONS					
SYM	DESCRIPTION	DATE	E.M.N. NO	DRAFT	CHKD APPD



.144 DIA HOLE, CSINK 82° X .284 DIA (4 PLACES)

REMOVE ALL BURRS AND SHARP EDGES.

NOTES

1	MNF-1	
Q'TY./UNIT	MODEL USED ON	ASS'Y. NO.
SCALE 1:1	CODE A	

THE CONTENTS OF THIS DRAWING ARE THE EXCLUSIVE PROPERTY OF THE TECHNICAL MATERIEL CORP. ITS UNAUTHORIZED USE OR REPRODUCTION IN WHOLE OR IN PART IS STRICTLY FORBIDDEN.

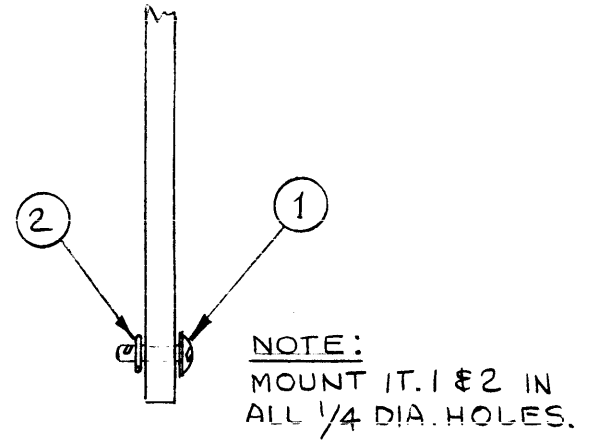
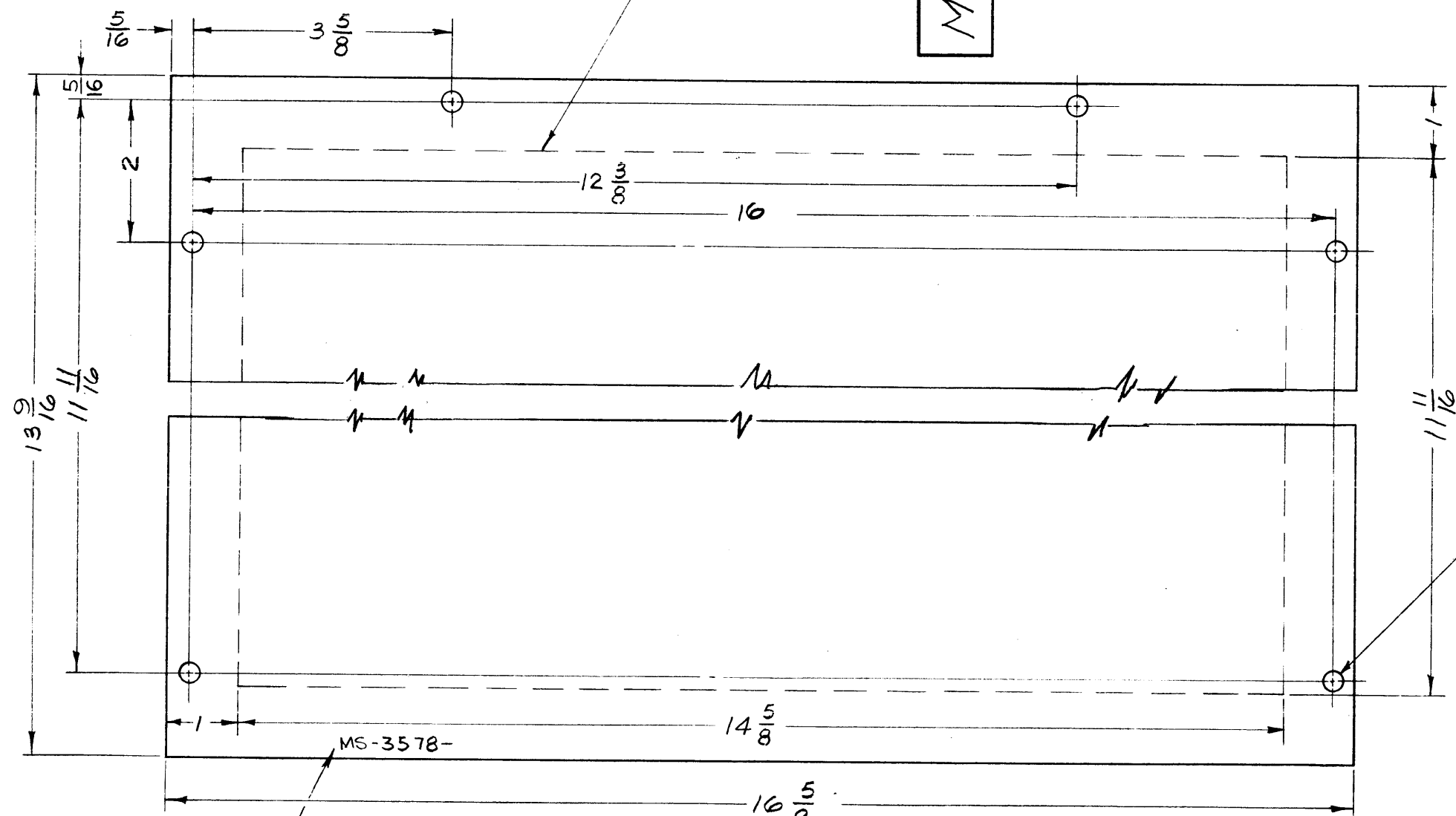
REQ'D.	ITEM	PART NUMBER	DESCRIPTION	SYMBOL
AALTONEN LIST OF MATERIAL				
MATERIAL			THE TECHNICAL MATERIEL CORP. MAMARONECK, NEW YORK	
.064 THK ALUMINUM 5052-H32				
FINISH			TITLE	
S404-IRIDITE 14 2 AL COAT			PLATE, SIDE, RIGHT	
UNLESS OTHERWISE SPECIFIED DIMENSIONS ARE IN INCHES AND INCLUDE CHEMICALLY APPLIED OR PLATED FINISHES			DRAWN <i>H. Peter</i> CHECKED <i>A. Tunney</i> ELECT. DES. <i>H. Peter</i> MECH. DES. <i>M. G. Benn</i>	DATE 10/29/63 DATE 1-10-64 DATE 1/21/64 DATE 1-10-64
DECIMALS .X ± .05 .XX ± .01 .XXX ± .005			TOLERANCES ± 1/64 ANGLES ± 0° 30'	FINAL APPROVAL <i>R. Root</i> DATE MS-3577 SHEET
			DATE 2/21/64	REV. LTR.

MS-3578 A

REVISIONS

SYM	DESCRIPTION	DATE	E.M.N. NO.	DRAFT	CHKD	APFD
A	IT. 1 & 2 ADD., PICT. W/NOTE SHOWING IT. 1 & 2 ADDED	7.22.64	11839	W.B.	@	TKA

MATERIAL NOTE:
PERFORATED AREA
.084 DIA. HOLES
ON 1/8 CENTERS
STAGGERED



METAL STAMP TMC PART NO.
1/8 HIGH GOTHIC, WITH LATEST
REVISION LETTER.

REQ'D.	ITEM	PART NUMBER	DESCRIPTION	SYMBOL
6	2	FS 109-3	RING, RETAINING	
6	1	FS 110-1	STUD, TURN LOCK	

AALTONEN LIST OF MATERIAL
MATERIAL .051 ALUMINUM 5052-H32 PERFORATED (SEE NOTE)
FINISH 6404 YEL IRIDITE
THE TECHNICAL MATERIEL CORP. MAMARONECK, NEW YORK

TITLE		COVER, TOP & BOTTOM	
UNLESS OTHERWISE SPECIFIED DIMENSIONS ARE IN INCHES AND INCLUDE CHEMICALLY APPLIED OR PLATED FINISHES	DRAWN T. RAMIREZ	DATE 10/14/63	FINAL APPROVAL [Signature]
DECIMALS .X ± .05 .XX ± .01 .XXX ± .005	CHECKED [Signature]	DATE 1-10-64	DATE [Signature]
FRACTIONS ± 1/64 ANGLES ± 0° 30'	ELECT. DES. [Signature]	DATE 1/21/64	DATE [Signature]
TOLERANCES	MECH. DES. [Signature]	DATE 1-10-64	DATE [Signature]

Q'TY./UNIT	MODEL USED ON	ASS'Y. NO.
2	MNF-1	
SCALE	CODE	
1:2	A	

THE CONTENTS OF THIS DRAWING ARE THE EXCLUSIVE PROPERTY OF THE TECHNICAL MATERIEL CORP. ITS UNAUTHORIZED USE OR REPRODUCTION IN WHOLE OR IN PART IS STRICTLY FORBIDDEN.

NOTES

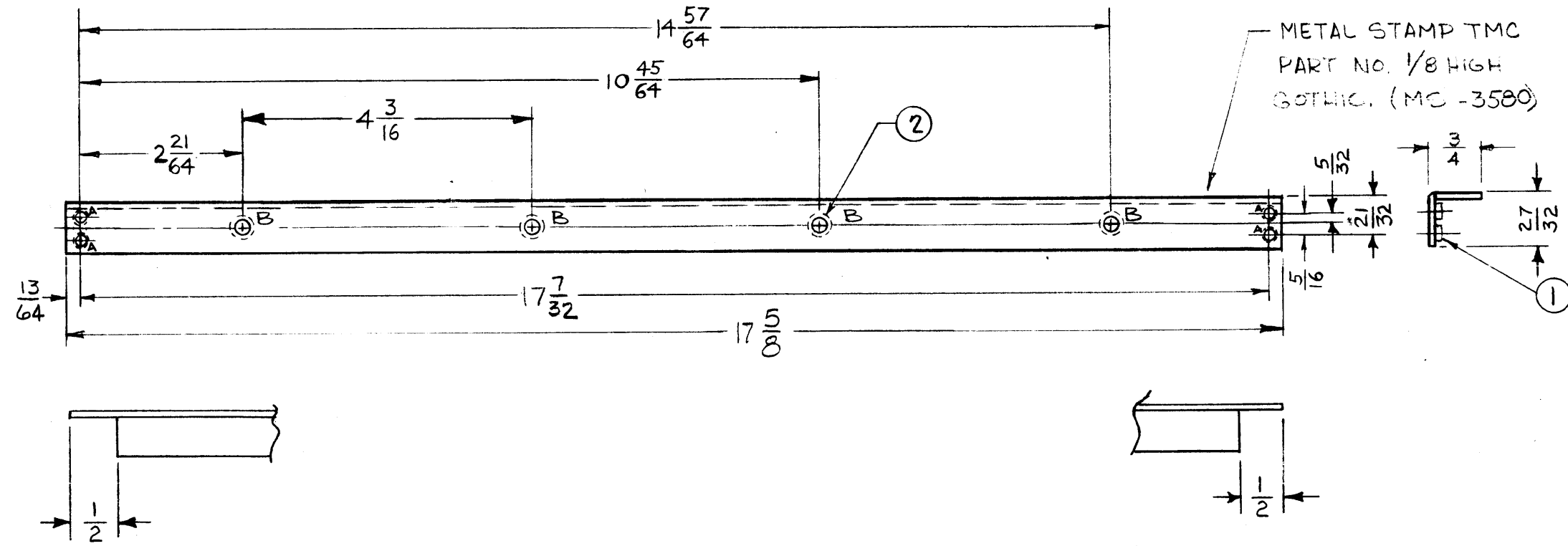
REMOVE ALL BURRS AND SHARP EDGES.

MS-3580

REVISIONS

SYM	DESCRIPTION	DATE	E.M.N. NO.	DRAFT	CHKD	APPD
-----	-------------	------	------------	-------	------	------

LEGEND		
HOLE	DESCRIPTION	REQ
A	.161-.164 DIA.	4
B	.221-.224 DIA	4



- UNLESS OTHERWISE SPECIFIED:**
1. USE MATERIAL THICKNESS FOR MAXIMUM RADIUS ON ALL BENDS.
 2. ALL ANGULAR BENDS 90°.
 3. REMOVE ALL BURRS AND SHARP EDGES.
 4. MOUNT INSERTS AFTER FINISHING.

NOTES

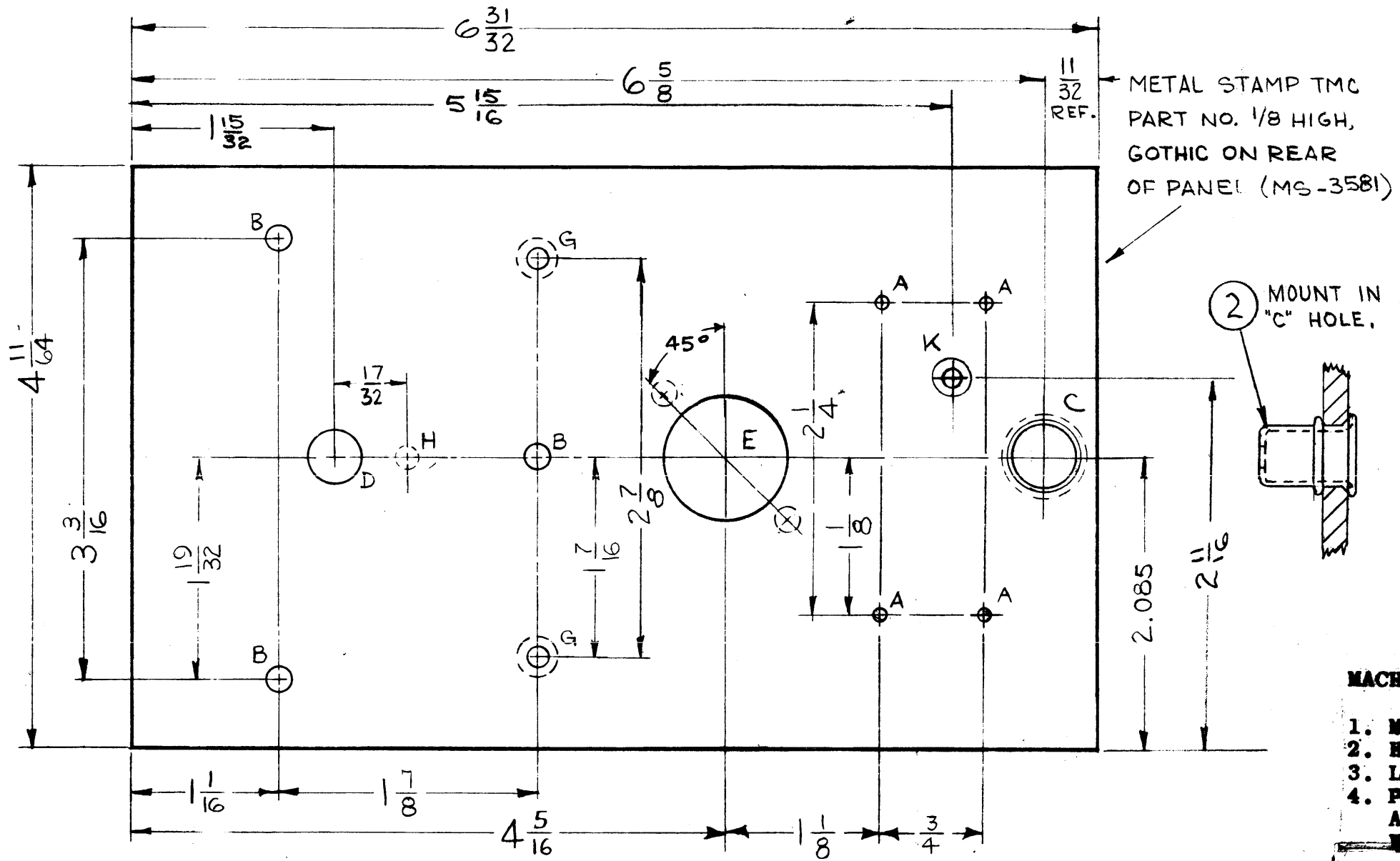
1	MNF-1	
Q'TY./UNIT	MODEL USED ON	ASS'Y. NO.
SCALE 1:2	CODE A	
THE CONTENTS OF THIS DRAWING ARE THE EXCLUSIVE PROPERTY OF THE TECHNICAL MATERIEL CORP. ITS UNAUTHORIZED USE OR REPRODUCTION IN WHOLE OR IN PART IS STRICTLY FORBIDDEN.		

REQ'D.	ITEM	PART NUMBER	DESCRIPTION	SYMBOL
4	2	NT-129-8-32-4	NUT, ROUND, SWAGE TYPE	B
4	1	NT-129-4-40-4	NUT, ROUND, SWAGE TYPE	A

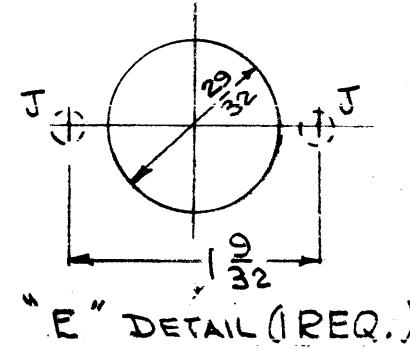
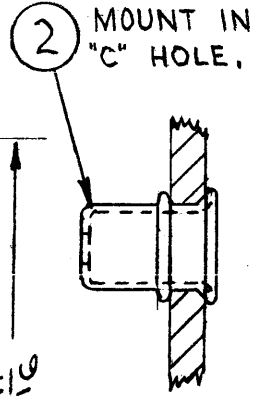
AALTONEN LIST OF MATERIAL

MATERIAL .080 THK. ALUM. 5052 H32	THE TECHNICAL MATERIEL CORP. MAMARONECK, NEW YORK		
FINISH S404-IRIDITE 14-2 AL-COAT	TITLE SUPPORT, MOUNTING, MODULE		
UNLESS OTHERWISE SPECIFIED DIMENSIONS ARE IN INCHES AND INCLUDE CHEMICALLY APPLIED OR PLATED FINISHES	DRAWN <i>Ge Sencer</i>	DATE 5-10-63	FINAL APPROVAL <i>RAT</i>
	CHECKED <i>A. W...</i>	DATE 1-9-64	
	ELECT. DES. <i>TJC</i>	DATE 1/21/64	MS-3580
	MECH. DES. <i>M...</i>	DATE 1-9-64	

MS-3581 A



LEGEND		
HOLE	DESCRIPTION	REQ.
A	.078 DIA.	4
B	11/64 DIA.	3
C	7/16 DIA., CSK AS SHOWN.	1
D	13/32	1
E	SEE DETAIL "E"	1
G	.201 DIA., CSK 82° TO .385 DIA.	2
H	5/32 DIA., 3/32 DEEP	1
J	.172 ± .003 DIA, 1/8 DEEP ON REAR OF PANEL	2
K	.144 DIA & CSK 82° X .284 DIA	1

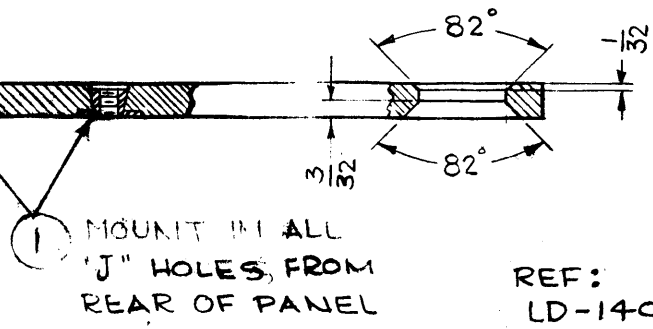


MACHINING:

1. MILL ALL EDGES.
2. HOLES MUST BE DRILLED, UNLESS OTHERWISE SPECIFIED.
3. LATERAL BOW OF PANEL MUST BE KEPT TO .031 TOLERANCE.
4. PANEL MUST BE FREE OF ALL MACHINING MARKS, GRINDS AND SCRATCHES. IF NECESSARY, SAND FRONT OF PANEL WITH NO. 120 GRIT SANDPAPER.

FINISH NOTES:

1. S404 - IRIDITE 14-2 AL-COAT.
2. S114 - ZINC CHROMATE PRIMER) FRONT AND
3. S115 - SMOOTH GRAY ENAMEL) EDGES ONLY
4. MOUNT ITEM #2 AFTER FINISHING



REF: LD-1402

SYM	DESCRIPTION	DATE	CH. NO.	DRAFTS	CHECKER	ENG. APP.
A	PICT: VIEW SHOWING IT.(2) ADD; B/M: IT.(2) ADD; NOTE #4 ADD.	1-13-64	13268	Q.R.	@	[Signature]
UNLESS OTHERWISE SPECIFIED:		SCALE: 1:1 CODE A				
DIMENSIONS ARE IN INCHES		MAXIMUM ALLOWABLE TOLERANCES HAVE BEEN DETERMINED AND ANY DEVIATIONS WILL BE CAUSE FOR REJECTION.				
TOLERANCES ON FRACTIONS ± 1/64 DECIMALS ± .05 ANGLES ± 1/2°		REMOVE ALL BURRS AND SHARP EDGES				

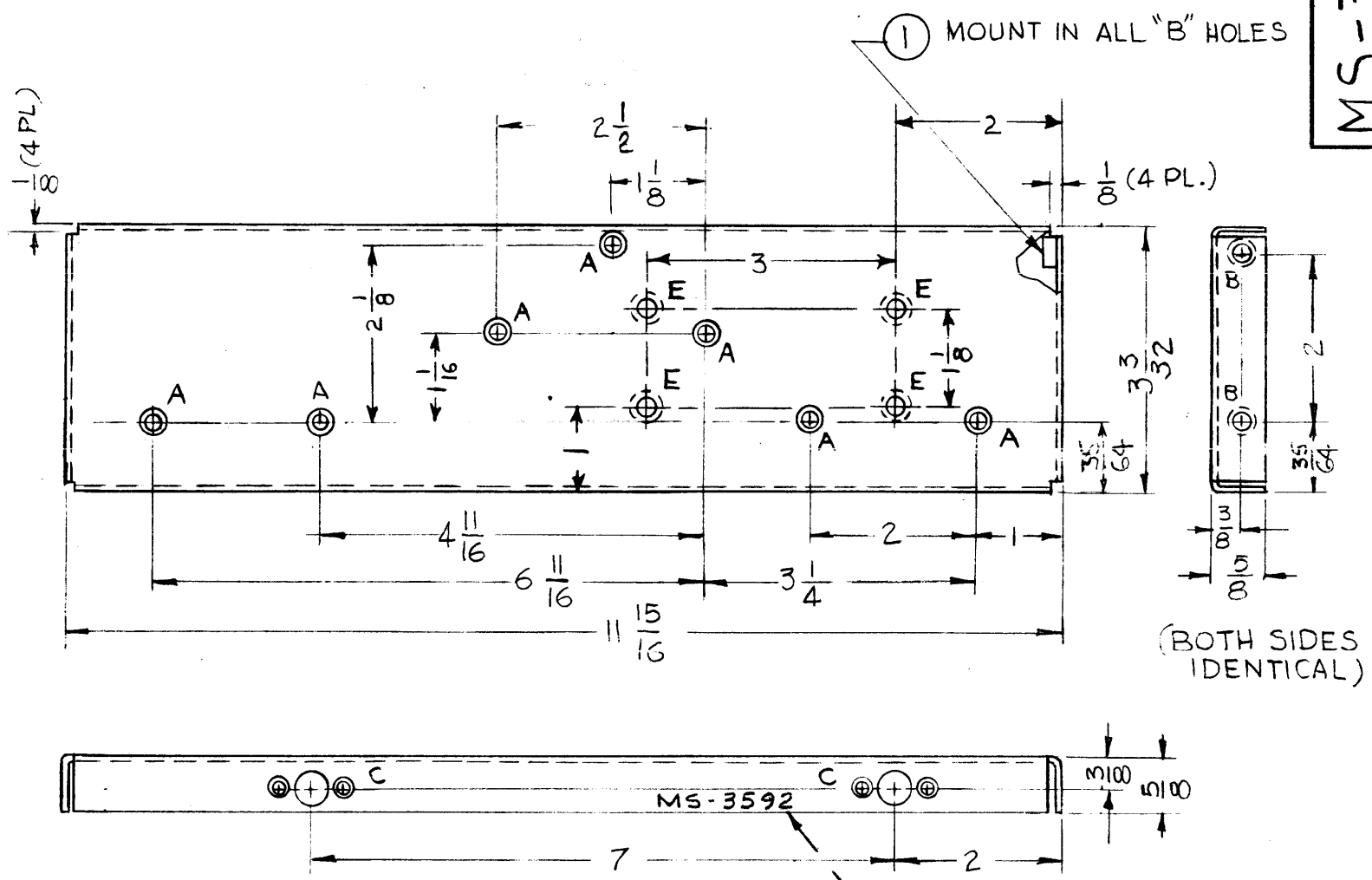
REQ. PER UNIT	4	MODEL	MNF-1	SECTION		ASS'Y. NO.	A-3389	DATE	4-18-63
USED ON									

1	2	FS123BI	SPACER, THUMBSCREW	C
2	1	NT-145-1	NUT, PLAIN, SPLINE	J
REQ. ITEM	PART NO.	AALTONEN	DESCRIPTION	SYMBOL
3/16 THK.		THE TECHNICAL MATERIEL CORP. MAMARONECK, NEW YORK		
ALUMINUM		PANEL, FRONT, MODULE		
2024-T4		DRAWN: [Signature] 1-9-64		
TYPE & TEMPER		HEAT TREAT. SPEC.	CHECKER	FINAL APPROVAL
SEE NOTE		[Signature] 2/21/64		
FINISH & SPEC. NO.		ELEC. DES. APP.	MECH. DES. APP.	MS-3581 A

MS-3592 0

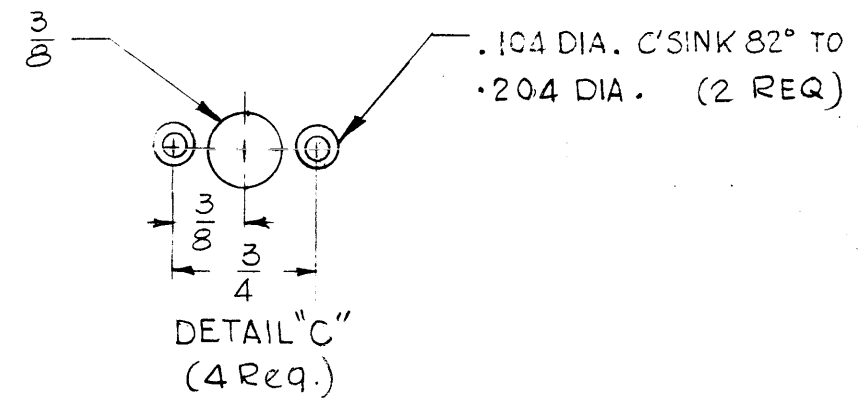
REVISIONS

SYM	DESCRIPTION	DATE	E.M.N. NO.	DRAFT	CHKD	APPD
0	ORIGINAL RELEASE FOR PRODUCTION	4/13/64	0	AM.	@	



① MOUNT IN ALL "B" HOLES

HOLE	DESCRIPTION	REQ'D
A	.144 DIA HOLE CSINK 82° TO .284 DIA	7
B	.194-.191 DIA.	4
C	SEE DETAIL "C"	4
D	DELETED	
E	.250-.253 DIA	4



- UNLESS OTHERWISE SPECIFIED:**
1. USE MATERIAL THICKNESS FOR MAXIMUM RADIUS ON ALL BENDS.
 2. ALL ANGULAR BENDS 90°.
 3. REMOVE ALL BURRS AND SHARP EDGES.
 4. MOUNT INSERTS AFTER FINISHING.

NOTES

1	MCG-1	
QTY./UNIT	MODEL USED ON	ASS'Y. NO.
SCALE 1:2	CODE A	

THE CONTENTS OF THIS DRAWING ARE THE EXCLUSIVE PROPERTY OF THE TECHNICAL MATERIEL CORP. ITS UNAUTHORIZED USE OR REPRODUCTION IN WHOLE OR IN PART IS STRICTLY FORBIDDEN.

REQ'D.	ITEM	PART NUMBER	DESCRIPTION	SYMBOL
4	2	NT-129-1032-4	NUT, ROUND, SWAGE TYPE	E
4	1	NT-129-632-4	NUT, ROUND, SWAGE TYPE	B

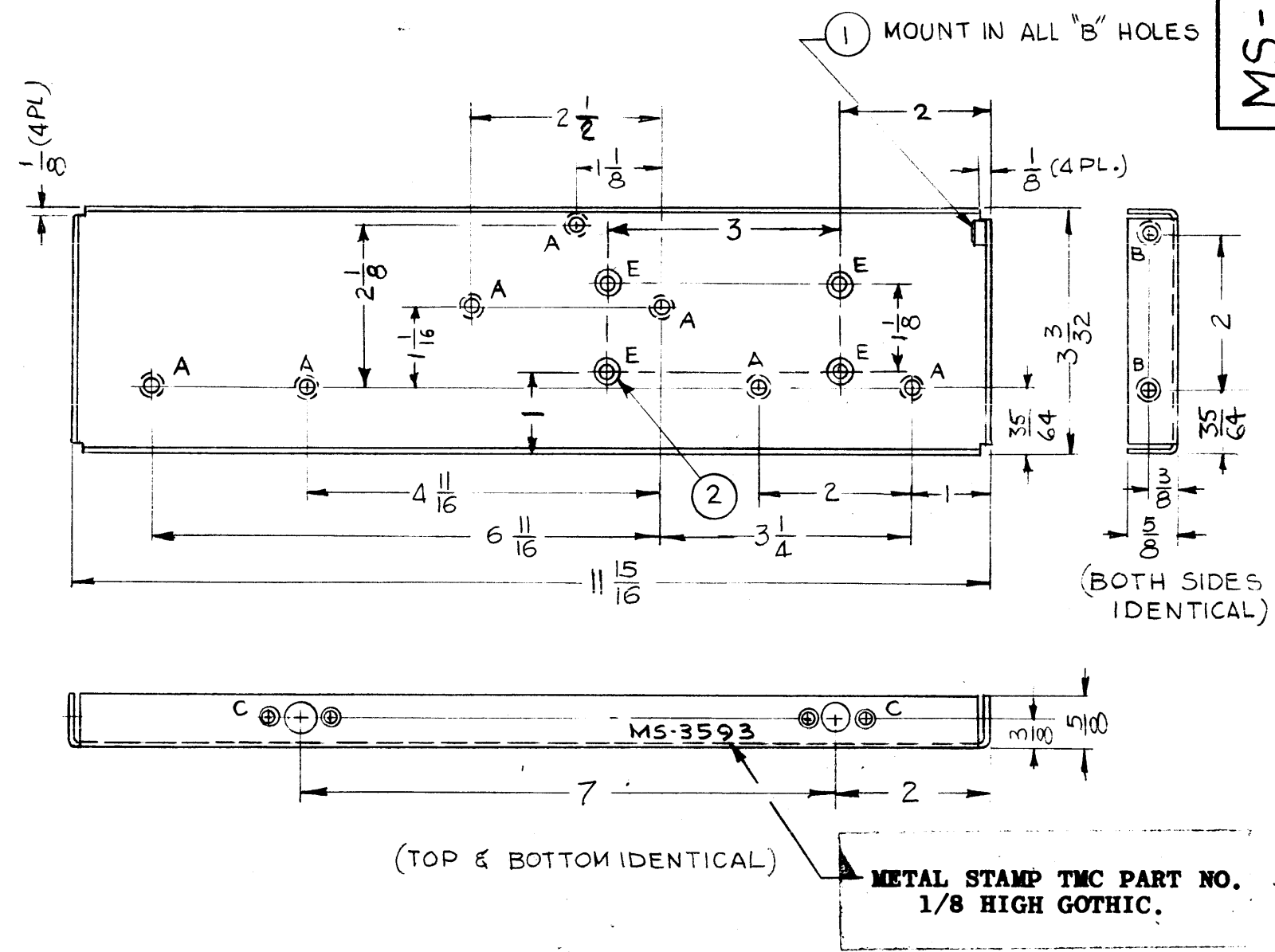
AALTONEN LIST OF MATERIAL

MATERIAL .064 ALUMINUM 5052-H32	THE TECHNICAL MATERIEL CORP. MAMARONECK, NEW YORK		
FINISH S404 IRIDITE 14-2 AL-COAT	TITLE PANEL, SIDE, LEFT		
UNLESS OTHERWISE SPECIFIED DIMENSIONS ARE IN INCHES AND INCLUDE CHEMICALLY APPLIED OR PLATED FINISHES	DRAWN G.D.L.	DATE 8-30-63	FINAL APPROVAL Roe
DECIMALS .X ± .05 .XX ± .01 .XXX ± .005	TOLERANCES	FRACTIONS ± 1/64 ANGLES ± 0° 30'	DATE 1-29-64
		DATE 1-30-64	DATE 4/22/64
		MS-3592	
		O	
		REV. LTR.	

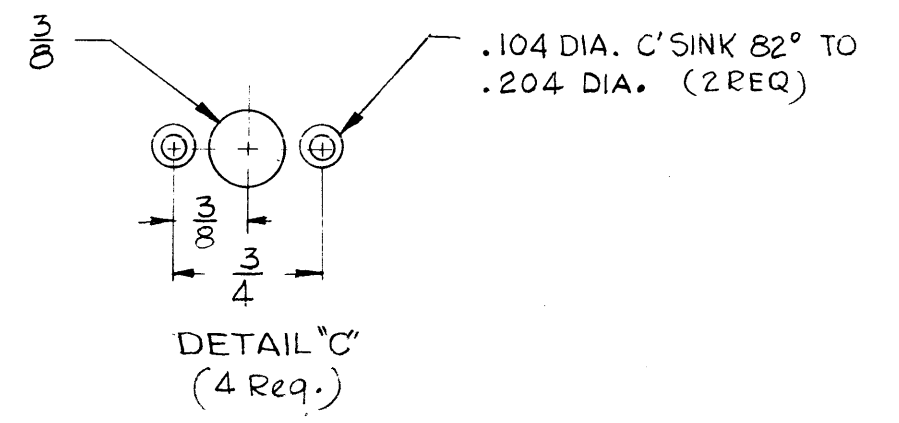
MS-3593 0

REVISIONS

SYM	DESCRIPTION	DATE	E.M.N. NO.	DRAFT	CHKD	APPD
0	ORIGINAL RELEASE FOR PRODUCTION	4/13/64	H	A.M.	(Signature)	



HOLE	DESCRIPTION	REQ'D
A	.144 DIA HOLE CSINK 82° TO .284 DIA	7
B	.194 - .191 DIA.	4
C	SEE DETAIL "C"	4
D	DELETED	
E	.250 - .253 DIA	4



REQ'D.	ITEM	PART NUMBER	DESCRIPTION	SYMBOL
4	2	NT-129-1032-4	NUT, ROUND, SWAGE TYPE	E
4	1	NT-129-632-4	NUT, ROUND, SWAGE TYPE	B

AALTONEN		LIST OF MATERIAL	
MATERIAL .064 ALUMINUM 5052-H 32		THE TECHNICAL MATERIEL CORP. MAMARONECK, NEW YORK	
FINISH S404 IRIDITE 14-2 AL-COAT		TITLE PANEL, SIDE, RIGHT	
UNLESS OTHERWISE SPECIFIED DIMENSIONS ARE IN INCHES AND INCLUDE CHEMICALLY APPLIED OR PLATED FINISHES		DRAWN G.D.L.	DATE 8-30-63
DECIMALS .X ± .05 .XX ± .01 .XXX ± .005		CHECKED a. [Signature]	DATE 1-29-64
FRACTIONS ± 1/64 ANGLES ± 0° 30'		ELECT. DES. [Signature]	DATE 1/29/64
TOLERANCES		MECH. DES. [Signature]	DATE 4-30-64
THE CONTENTS OF THIS DRAWING ARE THE EXCLUSIVE PROPERTY OF THE TECHNICAL MATERIEL CORP. ITS UNAUTHORIZED USE OR REPRODUCTION IN WHOLE OR IN PART IS STRICTLY FORBIDDEN.		FINAL APPROVAL [Signature]	
MCG-1		DATE 4/22/64	
Q'TY./UNIT	MODEL USED ON	ASS'Y. NO.	
SCALE 1:2	CODE A		
MS-3593		MS-3593	
		SHEET	
		REV. LTR.	

- UNLESS OTHERWISE SPECIFIED:
- USE MATERIAL THICKNESS FOR MAXIMUM RADIUS ON ALL BENDS.
 - ALL ANGULAR BENDS 90°.
 - REMOVE ALL BURRS AND SHARP EDGES.
 - MOUNT INSERTS AFTER FINISHING.

NOTES

