

THE CONTENTS OF THIS DRAWING ARE THE EXCLUSIVE PROPERTY OF THE TECHNICAL MATERIEL CORP. ITS UNAUTHORIZED USE FOR REPRODUCTION IN WHOLE OR IN PART IS STRICTLY FORBIDDEN.

REQ. PER UNIT

USED ON

MODEL

ASS'Y. NO.

DATE

MS-3410

1

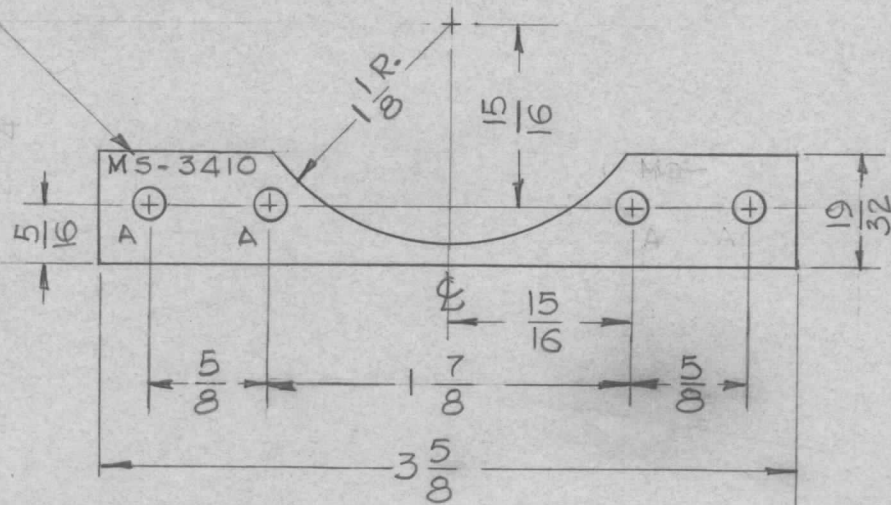
GPR-92

6-11-63

HOLE

HOLE	DESCRIPTION	REQ'D
A	5/32 DIA.	4

METAL STAMP TMC PART NO. 1/8 HIGH GOTHIC



SYM	DESCRIPTION	DATE	CH. NO.	DRAFTS	CHECKER	ENG. APP.	REQ. ITEM	PART NO.	STRUMER DESCRIPTION	SYMBOL	
								.051 THK.	THE TECHNICAL MATERIEL CORP. MAMARONECK, NEW YORK		
								STOCK SIZE		PLATE, SUPPORT	
								ALUMINUM		DIAL LIGHT SOCKET	
								MATERIAL			
								5052-H32	G.D.L. 7/8/63	JFH 7-8-63	
								TYPE & TEMPER	DRAWN	CHECKED	FINAL APPROVAL
								5404 IRIDITE 14-2 AL-COAT.	JMF	MP 7/8/63	MS-3410
								FINISH & SPEC. NO.	ELEC. DES. APP.	MECH. DES. APP.	

UNLESS OTHERWISE SPECIFIED DIMENSIONS ARE IN INCHES AND INCLUDE CHEMICALLY APPLIED OR PLATED FINISHES

SCALE
F&I

DECIMALS
.X ± .05
.XX ± .01
.XXX ± .005

TOLERANCES

FRACTIONS
± 1/64
ANGLES
± 0° 30'

CODE

THE CONTENTS OF THIS DRAWING ARE THE EXCLUSIVE PROPERTY OF THE TECHNICAL MATERIEL CORP. ITS UNAUTHORIZED USE FOR REPRODUCTION IN WHOLE OR IN PART IS STRICTLY FORBIDDEN.

REQ. PER UNIT

USED ON

MODEL

ASS'Y. NO.

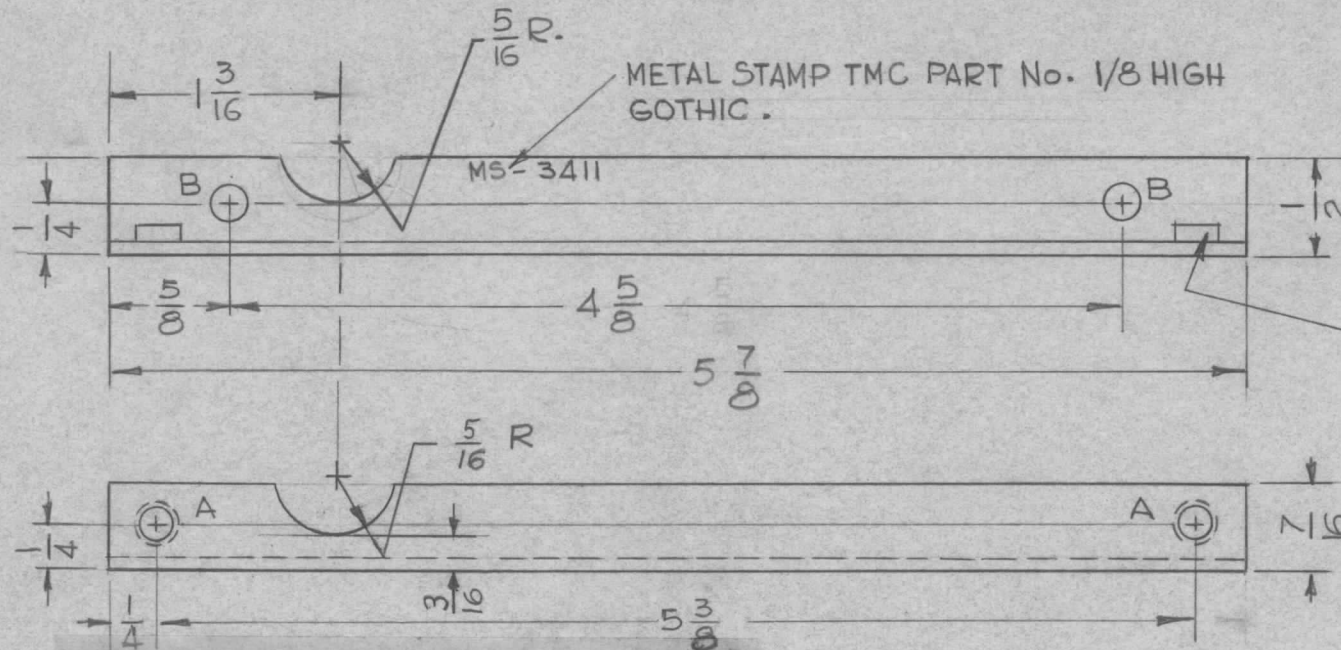
DATE

1

GPR-92

6-11-63

MS-3411 A



HOLE	DESCRIPTION	REQ.
A	.164 - .161 DIA.	2
B	11/64 DIA.	2

① MOUNT IN "A" HOLES AFTER FINISHING

UNLESS OTHERWISE SPECIFIED:

1. USE MATERIAL THICKNESS FOR MAXIMUM RADIUS ON ALL BENDS.
2. ALL ANGULAR BENDS 90°.
3. REMOVE ALL BURRS AND SHARP EDGES.
4. MOUNT INSERTS AFTER FINISHING.

2	1	NT-129-440-4	NUT, ROUND, SWAGE TYPE	A	
REQ. ITEM	PART NO.		STRUMER DESCRIPTION	SYMBOL	
1/16 THK.			THE TECHNICAL MATERIEL CORP.		
STOCK SIZE			MAMARONECK, NEW YORK		
A	RELOCATED CUTOUT IN TOP VIEW, 1 CUTOUT ADDED		BRACKET, SUPPORT, CASTING, BOTTOM COVER		
SYM	DESCRIPTION	DATE	CH. NO.	DRAFTS	
		5/14/64	11399	A.M.	
				@	
				MMK	
UNLESS OTHERWISE SPECIFIED DIMENSIONS ARE IN INCHES AND INCLUDE CHEMICALLY APPLIED OR PLATED FINISHES		SCALE	1:1		
DECIMALS	FRACTIONS	CODE	5052-H 32		
.X ± .05	± 1/64		G.D.L.		
.XX ± .01	ANGLES		7/8/63		
.XXX ± .005	± 0° 30'		VFH 7.8.63		
TOLERANCES			TYPE & TEMPER		
			S104 IRIDITE 14-2 AL-COAT		
			HEAT TREAT. SPEC.		
			DRAWN		
			CHECKED		
			FINAL APPROVAL		
			MS-3411 A		
			FINISH & SPEC. NO.		
			ELEC. DES. APP.		
			MECH. DES. APP.		

THE CONTENTS OF THIS DRAWING ARE THE EXCLUSIVE PROPERTY OF THE TECHNICAL MATERIEL CORP. ITS UNAUTHORIZED USE FOR REPRODUCTION IN WHOLE OR IN PART IS STRICTLY FORBIDDEN.

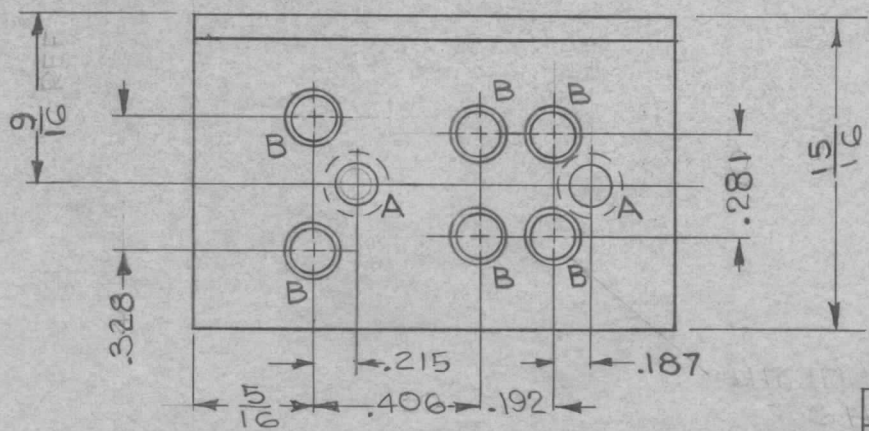
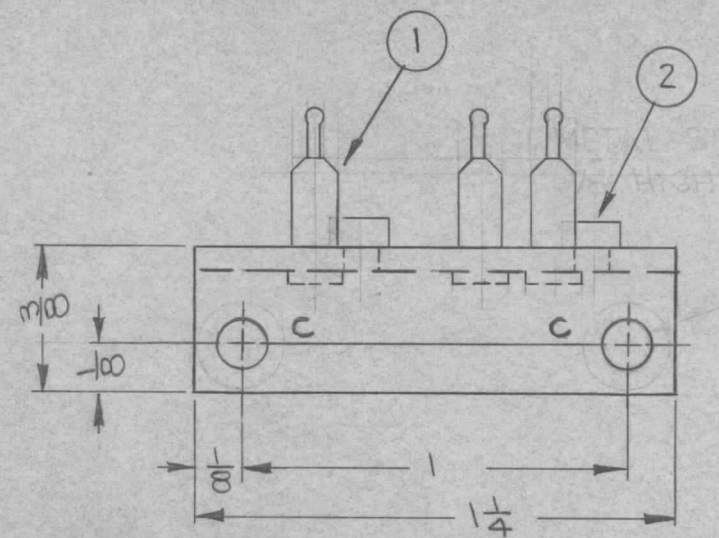
REQ. PER UNIT	USED ON		
	MODEL	ASS'Y. NO.	DATE
1	TTRR		6-11-63
1	TTRT		6-11-63

MS-3414 A

HOLE LEGEND
A

HOLE	DESCRIPTION	REQ'D
A	.161-.164 DIA	2
B	.110 DIA, CSK 60° X .120 DIA.	6
C	.120 DIA.	2

NOTE:
1. MOUNT ITEM 1 & 2 AS SHOWN AFTER FINISHING.



REF: LD-1342

METAL STAMP TMC PART No. (MS-3414)-
1/8 HIGH GOTHIC, THIS SURFACE, WITH
LATEST REVISION LETTER

2	2	NT-129-440-4	NUT, SWAGE	A
6	1	JJ-219-18-9	JACK, TIP, SUB-MINIATURE	XY1AB XY2AB

SYM	DESCRIPTION	DATE	CH. NO.	DRAFTS	CHECKER	ENG. APP.
A	STOCK SIZE WAS .064 B-HOLE WAS .116 DIA. C-HOLE, C-SINK DELETED 9/16 WAS 7/16, 15/16 WAS 13/16	6.4.64	11493	MB	@	TKW
UNLESS OTHERWISE SPECIFIED DIMENSIONS ARE IN INCHES AND INCLUDE CHEMICALLY APPLIED OR PLATED FINISHES		SCALE NOT TO SCALE				
DECIMALS .X ± .05 .XX ± .01 .XXX ± .005		FRACTIONS ± 1/64 ANGLES ± 0° 30'		CODE A		
TOLERANCES						

REQ.	ITEM	PART NO.	JORDAN DESCRIPTION	SYMBOL
		.081	THE TECHNICAL MATERIEL CORP. MAMARONECK, NEW YORK	
		ALUMINUM	BRACKET, CRYSTAL SOCKET	
		5052	H-32	
		S404-YELLOW IRIDITE		
		FINISH & SPEC. NO.	ELEC. DES. APP.	MECH. DES. APP.
			MS-3414	A

THE CONTENTS OF THIS DRAWING ARE THE EXCLUSIVE PROPERTY OF THE TECHNICAL MATERIEL CORP. ITS UNAUTHORIZED USE FOR REPRODUCTION IN WHOLE OR IN PART IS STRICTLY FORBIDDEN.

REQ. PER UNIT

USED ON

MODEL

ASS'Y. NO.

DATE

2

TTR-10

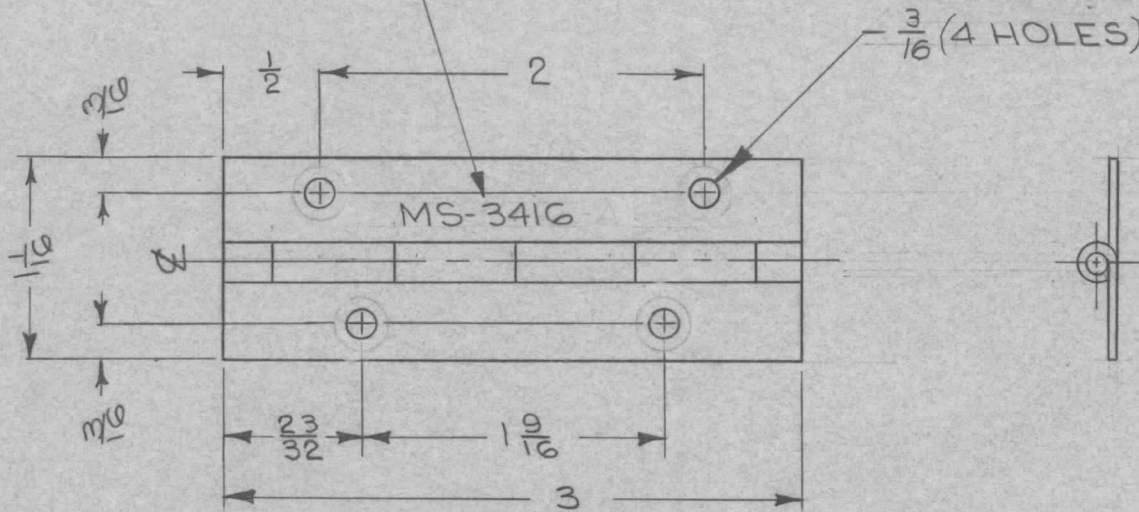
T7Ka

6-11-63

MS-3416

A

METAL STAMP TMC PART No.
1/8 HIGH GOTHIC



HINGE DATA

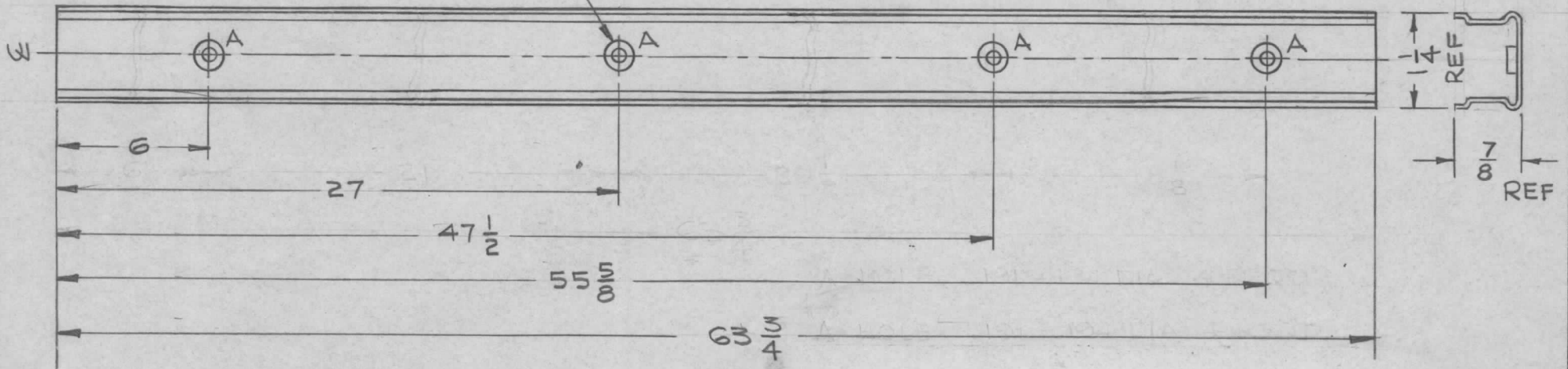
MAT'L - ALUM, 5052-H32
 GAUGE - .040 THK
 PIN MAT'L - DURALUMINUM
 PIN DIA. - .095
 FINISH - S404, YELLOW IRIDITE
 PLAIN TYPE; BOTH FLAPS
 NOT SWAGED

REF: HOMER D. BRONSON Co.

SYM	DESCRIPTION	DATE	CH. NO.	DRAFTS	CHECKER	ENG. APP.	REQ. ITEM	PART NO.	JORDAN DESCRIPTION	E3037-90	SYMBOL
							SEE NOTE		THE TECHNICAL MATERIEL CORP. MAMARONECK, NEW YORK		
							SEE NOTE		HINGE HINGE BOARDS		
							SEE NOTE		MATERIAL		
							SEE NOTE	SEE NOTE	R. Kohn	J. Jordan	B. P.
							TYPE & TEMPER	HEAT TREAT. SPEC.	6-11-63		
							SEE NOTE		R. KOHN	W. JORDAN	MS-3416 A
							FINISH & SPEC. NO.		ELEC. DES. APP.	MECH. DES. APP.	

REQ. PER UNIT	USED ON			MS 3435
	MODEL	ASS'Y. NO.	DATE	
1	RAK-31A		10-8-63	

① MOUNT ITEM 1
IN ALL "A" HOLES
AS SHOWN



A HOLE .191-.194 DIA, 4 REQD

REF: TMC PART NO. P0-160

4	1	NT-129-632-3	NUT, ROUND, SWAGE TYPE		A	
REQ. ITEM	PART NO.		DESCRIPTION		SYMBOL	
	SEE REF PART NO.		THE TECHNICAL MATERIEL CORP.			
	STOCK SIZE		MAMARONECK, NEW YORK			
	SEE REF PART NO.		CHANNEL, STRIP, A.C.			
	MATERIAL		RAK-31A			
SYM	DESCRIPTION	DATE	CH. NO.	DRAFTS	CHECKER	ENG. APP.
UNLESS OTHERWISE SPECIFIED DIMENSIONS ARE IN INCHES AND INCLUDE CHEMICALLY APPLIED OR PLATED FINISHES		SCALE NONE				
DECIMALS .X ± .05 .XX ± .01 .XXX ± .005	TOLERANCES	FRACTIONS ± 1/64 ANGLES ± 0° 30'	CODE A			
SEE REF PART NO.		TYPE & TEMPER	HEAT TREAT. SPEC.	DRAWN	CHECKED	FINAL APPROVAL
FINISH & SPEC. NO.		ELEC. DES. APP.		MECH. DES. APP.		MS 3435

THE CONTENTS OF THIS DRAWING ARE THE EXCLUSIVE PROPERTY OF THE TECHNICAL MATERIEL CORP. ITS UNAUTHORIZED USE FOR REPRODUCTION IN WHOLE OR IN PART IS STRICTLY FORBIDDEN.

REQ. PER UNIT

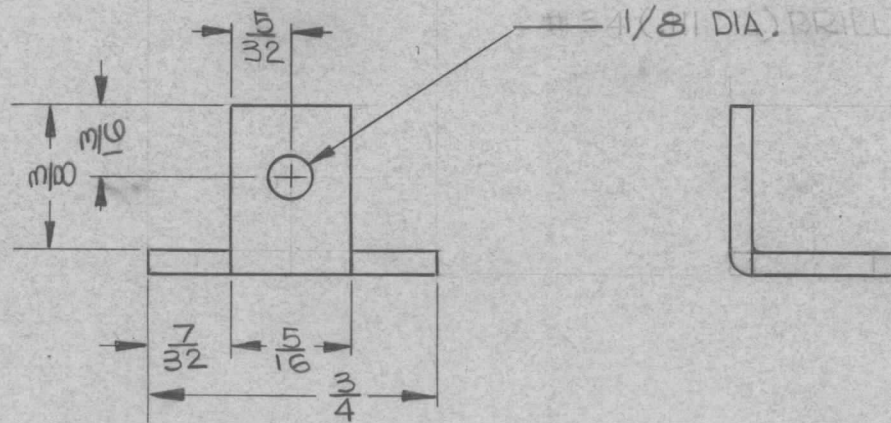
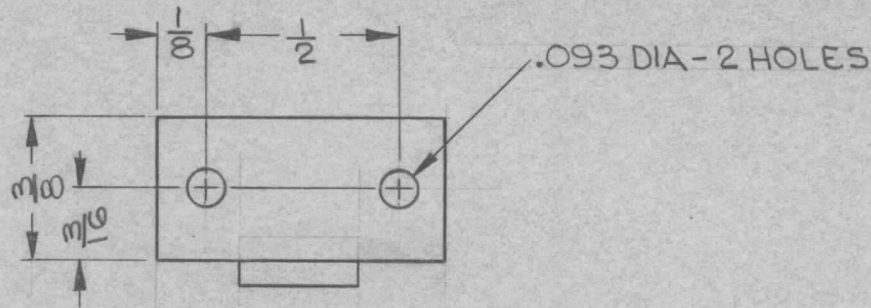
USED ON

MODEL
GDR-92

ASS'Y. NO.

DATE
6-18-63

MS-3437

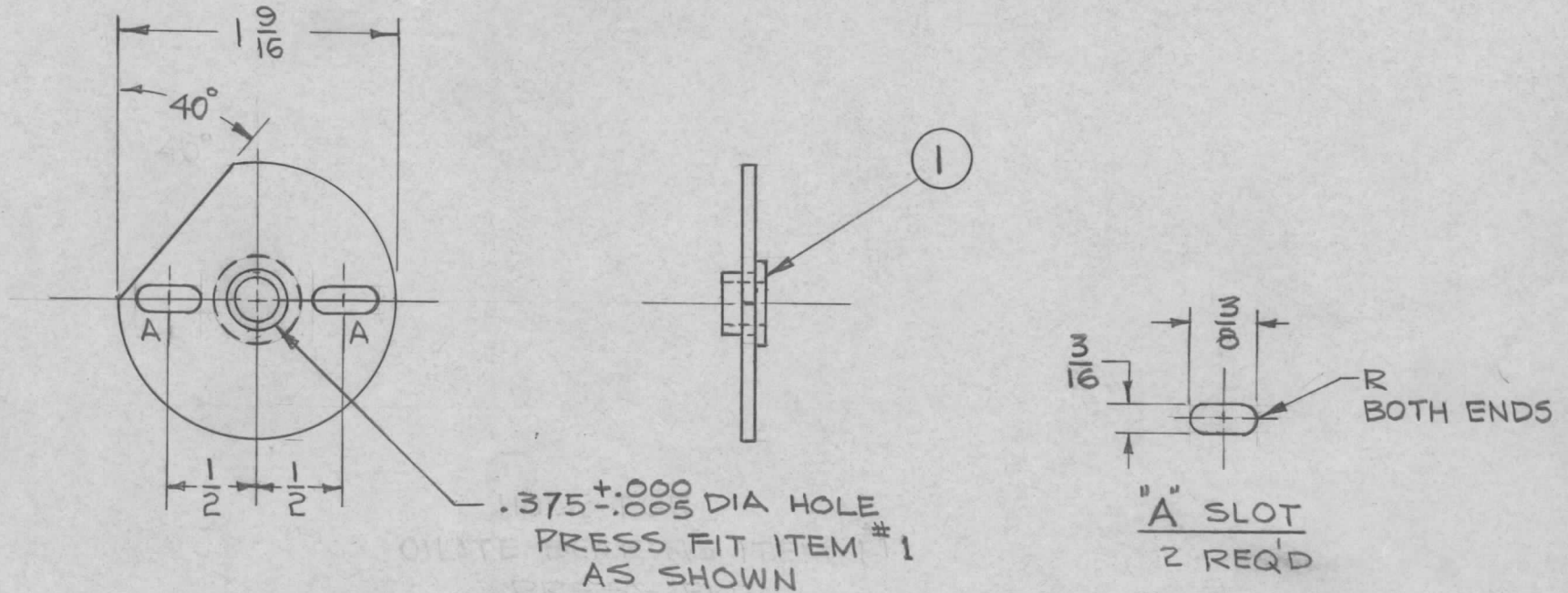


~ NOTE ~

- UNLESS OTHERWISE SPECIFIED:
- 1. USE MATERIAL THICKNESS FOR MAX BEND RADIUS.
- 2. ALL BENDS 90°.

							REQ. ITEM	PART NO.	STRUHER DESCRIPTION	SYMBOL		
							.064		THE TECHNICAL MATERIEL CORP. MAMARONECK, NEW YORK			
							STOCK SIZE					
							ALUMINUM		BRACKET - MTG. BR			
							MATERIAL					
SYM	DESCRIPTION	DATE	CH. NO.	DRAFTS	CHECKER	ENG. APP.	5052-H32	H32	R Chvank 6-18-63	JHO 7/8/63	YFH 7.8.63	
UNLESS OTHERWISE SPECIFIED DIMENSIONS ARE IN INCHES AND INCLUDE CHEMICALLY APPLIED OR PLATED FINISHES		SCALE 2:1						TYPE & TEMPER	HEAT TREAT. SPEC.	DRAWN	CHECKED	FINAL APPROVAL
DECIMALS .X ± .05 .XX ± .01 .XXX ± .005	TOLERANCES	FRACTIONS ± 1/64 ANGLES ± 0° 30'	CODE				S404-YELLOW IRIDITE			JMA	MP 7/8/63	MS-3437
							FINISH & SPEC. NO.		ELEC. DES. APP.	MECH. DES. APP.		

REQ. PER UNIT	USED ON			MS-3440	A
	MODEL	ASS'Y. NO.	DATE		
1	CHG-2A		9-10-63		



NOTES:

1. REMOVE ALL BURRS AND SHARP EDGES.

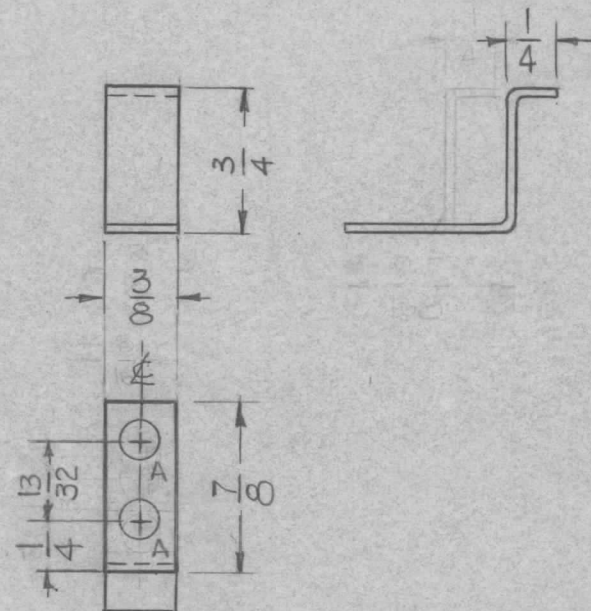
						1	1	BB-118-36	BEARING, FLANGE TYPE		
						REQ. ITEM		PART NO.	DESCRIPTION	SYMBOL	
								.081 THK STOCK SIZE	THE TECHNICAL MATERIEL CORP. MAMARONECK, NEW YORK		
								ALUMINUM		PLATE, BEARING, ADJUSTABLE	
A	BB-118-36 WAS BB-118-3	12/11/63	10545	<i>AW</i>	<i>AW</i>						
SYM	DESCRIPTION	DATE	CH. NO.	DRAFTS	CHECKER	ENG. APP.					
UNLESS OTHERWISE SPECIFIED DIMENSIONS ARE IN INCHES AND INCLUDE CHEMICALLY APPLIED OR PLATED FINISHES		SCALE	1/1								
DECIMALS		FRACTIONS	CODE				2024-T3		<i>JAS</i>	<i>file 9/11/63</i>	<i>BP</i>
.X \pm .05		\pm 1/64									
.XX \pm .01	TOLERANCES	ANGLES					S-404 YEL IRIDITE			<i>TAK</i>	
.XXX \pm .005		\pm 0° 30'					FINISH & SPEC. NO.		ELEC. DES. APP.	MECH. DES. APP.	MS-3440 A

THE CONTENTS OF THIS DRAWING ARE THE EXCLUSIVE PROPERTY OF THE TECHNICAL MATERIEL CORP. ITS UNAUTHORIZED USE FOR REPRODUCTION IN WHOLE OR IN PART IS STRICTLY FORBIDDEN.

REQ. PER UNIT	USED ON		
	MODEL	ASS'Y. NO.	DATE
1	TRX-1		6-8-63

MS-3441

HOLE	DESCRIPTION	REQ
A	3/16 DIA.	2



- UNLESS OTHERWISE SPECIFIED -
 1-USE MATERIAL THICKNESS FOR MAX. RADIUS, ON ALL BENDS.
 2- ALL BENDS TO BE 90°

SYM	DESCRIPTION	DATE	CH. NO.	DRAFTS	CHECKER	ENG. APP.	REQ. ITEM	PART NO.	STRUMER	DESCRIPTION	SYMBOL	
								.051 THK.		THE TECHNICAL MATERIEL CORP. MAMARONECK, NEW YORK		
								STOCK SIZE			BRACKET, CAPACITOR, STOP	
								ALUMINUM				
								MATERIAL				
	UNLESS OTHERWISE SPECIFIED DIMENSIONS ARE IN INCHES AND INCLUDE CHEMICALLY APPLIED OR PLATED FINISHES						5052-H32		G.D.L.	JMA		
		SCALE 1:1					TYPE & TEMPER	HEAT TREAT. SPEC.	DRAWN	CHECKED	FINAL APPROVAL	
	DECIMALS .X ± .05 .XX ± .01 .XXX ± .005	FRACTIONS ± 1/64 ANGLES ± 0° 30'	CODE				S404-IRIDITE 14-2 AL-COAT		JMA	D. Koshani	MS-3441	
	TOLERANCES						FINISH & SPEC. NO.		ELEC. DES. APP.	MECH. DES. APP.		

THE CONTENTS OF THIS DRAWING ARE THE EXCLUSIVE PROPERTY OF THE TECHNICAL MATERIEL CORP. ITS UNAUTHORIZED USE FOR REPRODUCTION IN WHOLE OR IN PART IS STRICTLY FORBIDDEN.

REQ. PER UNIT

1 HFA-1

USED ON

MODEL

ASS'Y. NO.

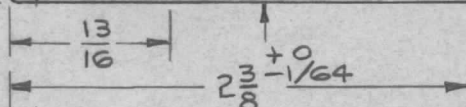
DATE

6-24-63

MS-3442

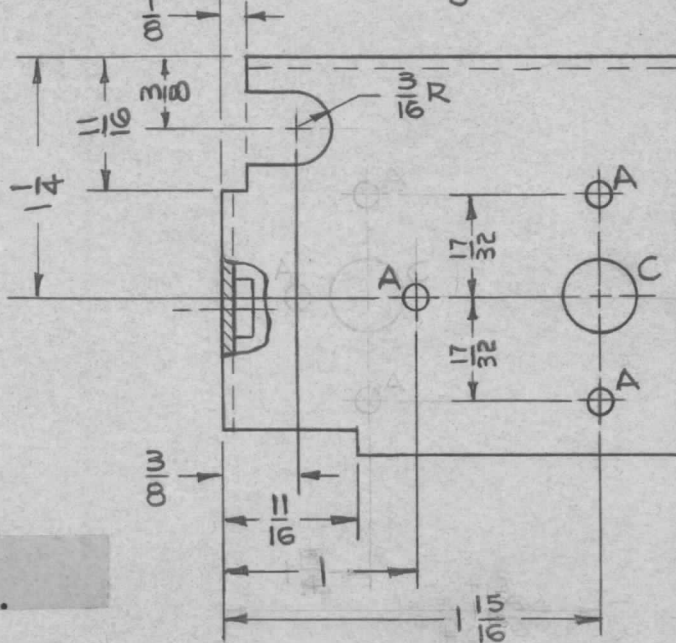
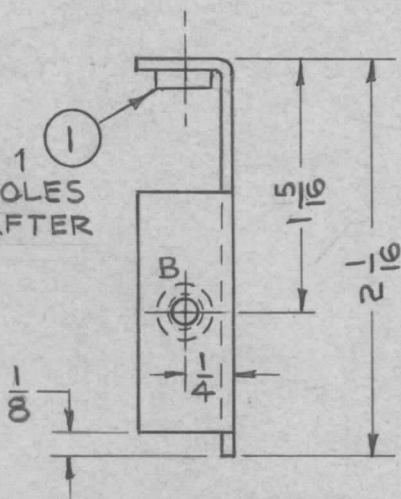
A

METAL STAMP TMC PART NO 1/8 HIGH GOTHIC



HOLE	DESCRIPTION	REQD
A	1/8 DIA	3
B	.191-.194 DIA	2
C	3/8 DIA	1

MOUNT ITEM 1 IN ALL "B" HOLES AS SHOWN AFTER FINISHING



NOTES:

1. USE MATERIAL THICKNESS FOR MAXIMUM RADIUS ON ALL BENDS.
2. ALL ANGULAR BENDS 90°.
3. REMOVE ALL BURRS AND SHARP EDGES.

REQ.	ITEM	PART NO.	DESCRIPTION	SYMBOL									
2	1	NT-129-632-4	NUT, ROUND, SWAGE TYPE										
		.064 THK	THE TECHNICAL MATERIEL CORP.										
		STOCK SIZE	MAMARONECK. NEW YORK										
A	(2) A & (1) C HOLE DELETED DIM 1 WAS 3/4	9-12-63 9897	ALUMINUM	BRACKET, SWITCH MOUNTING, CHANNEL B									
SYM	DESCRIPTION	DATE	CH. NO.	DRAFTS	CHECKER	ENG. APP.	MATERIAL	5052-H32	TYPE & TEMPER	HEAT TREAT. SPEC.	DRAWN	CHECKED	FINAL APPROVAL
	UNLESS OTHERWISE SPECIFIED DIMENSIONS ARE IN INCHES AND INCLUDE CHEMICALLY APPLIED OR PLATED FINISHES	SCALE	1/1										
	DECIMALS .X ± .05 .XX ± .01 .XXX ± .005	FRACTIONS ± 1/64 ANGLES ± 0° 30'	TOLERANCES	CODE									
													MS-3442 A

THE CONTENTS OF THIS DRAWING ARE THE EXCLUSIVE PROPERTY OF THE TECHNICAL MATERIEL CORP. ITS UNAUTHORIZED USE FOR REPRODUCTION IN WHOLE OR IN PART IS STRICTLY FORBIDDEN.

REQ. PER UNIT

USED ON

MODEL

ASS'Y. NO.

DATE

1

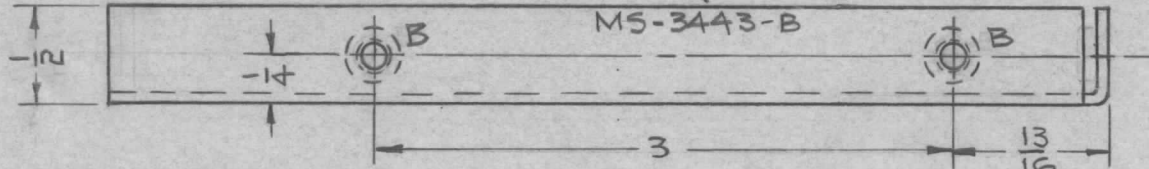
HFA-1

6-24-63

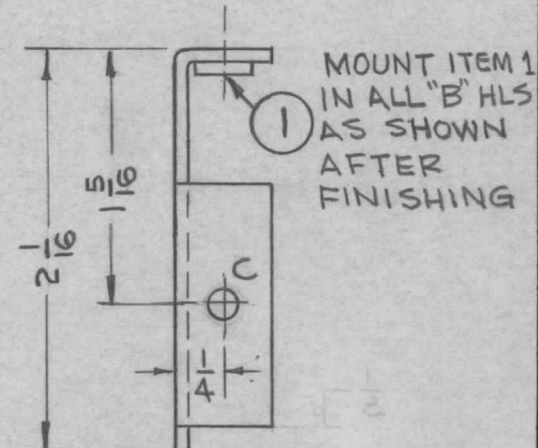
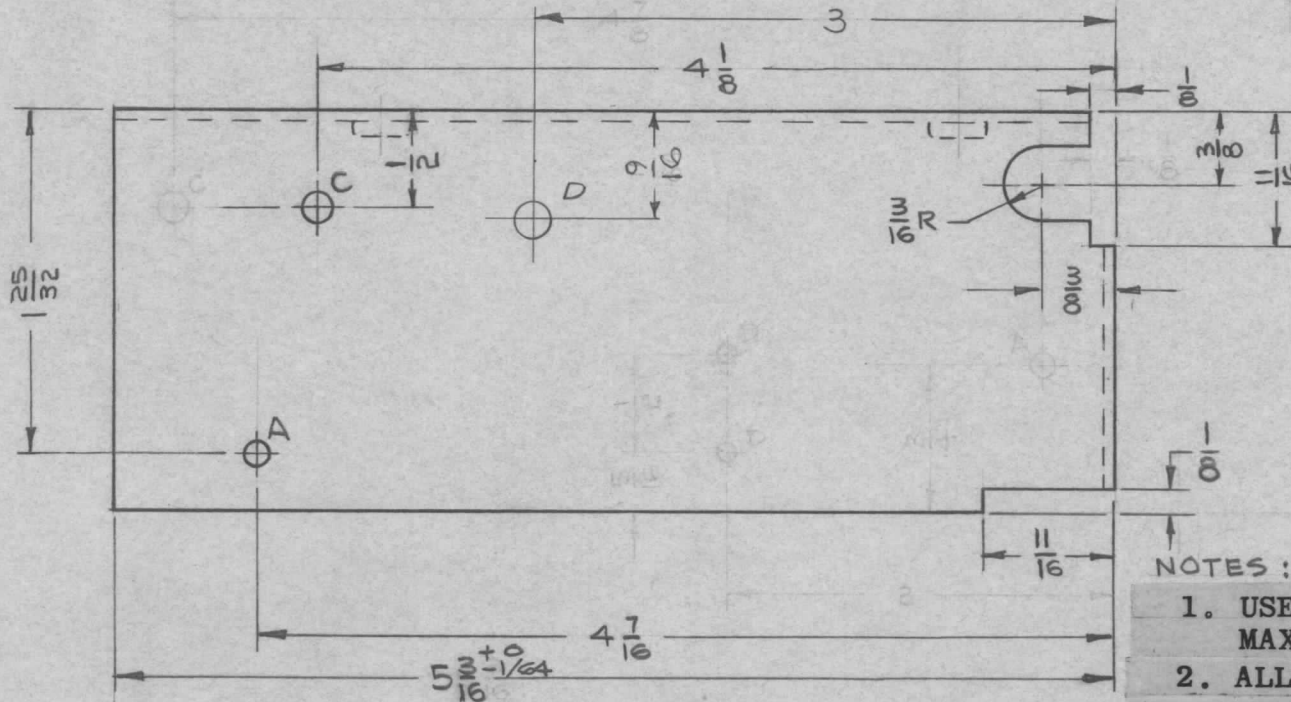
MS-3443

B

METAL STAMP TMC PART NO 1/8 HIGH GOTHIC



HOLE	DESCRIPTION	REQD
A	1/8 DIA	1
B	.191-.194 DIA	2
C	.158±.002 DIA	2
D	11/64 (.171) D.	1



MOUNT ITEM 1 IN ALL "B" HLS AS SHOWN AFTER FINISHING

NOTES:

1. USE MATERIAL THICKNESS FOR MAXIMUM RADIUS ON ALL BENDS.
2. ALL ANGULAR BENDS 90°.
3. REMOVE ALL BURRS AND SHARP EDGES.

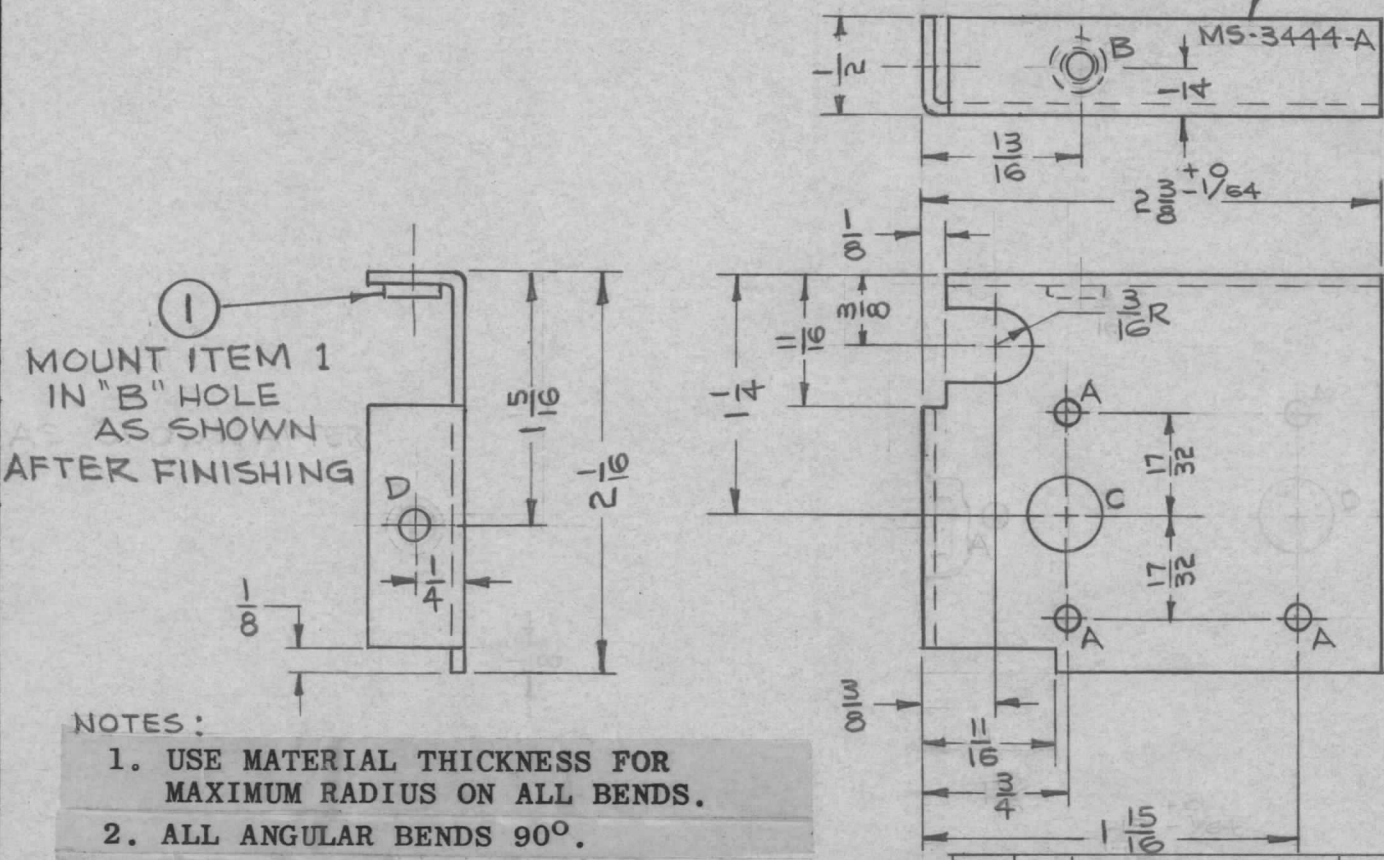
2	1	NT-129-632-4	NUT, ROUND, SWAGE TYPE	
REQ. ITEM	PART NO.		DESCRIPTION	SYMBOL
	.064 THK		THE TECHNICAL MATERIEL CORP.	
	STOCK SIZE		MAMARONECK, NEW YORK	
	ALUMINUM		SHIELD, RF CHANNEL BNC	
	MATERIAL		TYPE SHIELD CHANNEL BNC	
	5052-H32		8/13/63	BP
	TYPE & TEMPER	HEAT TREAT. SPEC.	DRAWN	CHECKED
	5404 YEL IRIDITE			
	FINISH & SPEC. NO.	ELEC. DES. APP.	MECH. DES. APP.	
				MS-3443 B

B	UPDATED DWG	12/18/63	10616	AD	AD	AD
A	(1) A, (1) B & (2) D HOLES DELETED. ITEM 1 ADDED	9-12-63	9897	JAG	JAG	AD
SYM	DESCRIPTION	DATE	CH. NO.	DRAFTS	CHECKER	ENG. APP.
UNLESS OTHERWISE SPECIFIED DIMENSIONS ARE IN INCHES AND INCLUDE CHEMICALLY APPLIED OR PLATED FINISHES		SCALE 1/1				
DECIMALS .X ± .05 .XX ± .01 .XXX ± .005	TOLERANCES	FRACTIONS ± 1/64 ANGLES ± 0° 30'	CODE			

THE CONTENTS OF THIS DRAWING ARE THE EXCLUSIVE PROPERTY OF THE TECHNICAL MATERIEL CORP. ITS UNAUTHORIZED USE FOR REPRODUCTION IN WHOLE OR IN PART IS STRICTLY FORBIDDEN.

REQ. PER UNIT	USED ON			MS-3444	A
	MODEL	ASS'Y. NO.	DATE		
1	HFA-1		6-24-63		

METAL STAMP TMC PART NO. 1/8 HIGH GOTHIC



HOLE	DESCRIPTION	REQ'D
A	1/8 DIA	3
B	.191-.194 DIA	1
C	3/8 DIA	1
D	5/32 DIA	1

MOUNT ITEM 1 IN "B" HOLE AS SHOWN AFTER FINISHING

- NOTES:
1. USE MATERIAL THICKNESS FOR MAXIMUM RADIUS ON ALL BENDS.
 2. ALL ANGULAR BENDS 90°.
 3. REMOVE ALL BURRS AND SHARP EDGES.

1	1	NT-129-632-4	NUT, ROUND, SWAGE TYPE	
---	---	--------------	------------------------	--

REQ.	ITEM	PART NO.	DESCRIPTION	SYMBOL
		.064 THK	THE TECHNICAL MATERIEL CORP.	
		STOCK SIZE	MAMARONECK, NEW YORK	
A	(2) 'A', (1) 'B' & (1) 'C' HOLE DELETED 'D' HOLE & ITEM 1 ADDED	9-12-63 9897	ALUMINUM	BRACKET, SWITCH MOUNTING CHANNEL A
SYM	DESCRIPTION	DATE	CH. NO.	DRAFTS
				CHECKER
				ENG. APP.
UNLESS OTHERWISE SPECIFIED DIMENSIONS ARE IN INCHES AND INCLUDE CHEMICALLY APPLIED OR PLATED FINISHES		SCALE 1/1		
DECIMALS	FRACTIONS	CODE		
.X ± .05	± 1/64			
.XX ± .01	ANGLES			
.XXX ± .005	± 0° 30'			
TOLERANCES		5052-H32	8/13/63	BP
		TYPE & TEMPER	HEAT TREAT. SPEC.	DRAWN
		5404 YEL IRIDITE		CHECKED
		FINISH & SPEC. NO.	ELEC. DES. APP.	MECH. DES. APP.
				MS-3444
				A

THE CONTENTS OF THIS DRAWING ARE THE EXCLUSIVE PROPERTY OF THE TECHNICAL MATERIEL CORP. ITS UNAUTHORIZED USE FOR REPRODUCTION IN WHOLE OR IN PART IS STRICTLY FORBIDDEN.

REQ. PER UNIT

USED ON

MODEL

ASS'Y. NO.

DATE

1

HFA-1

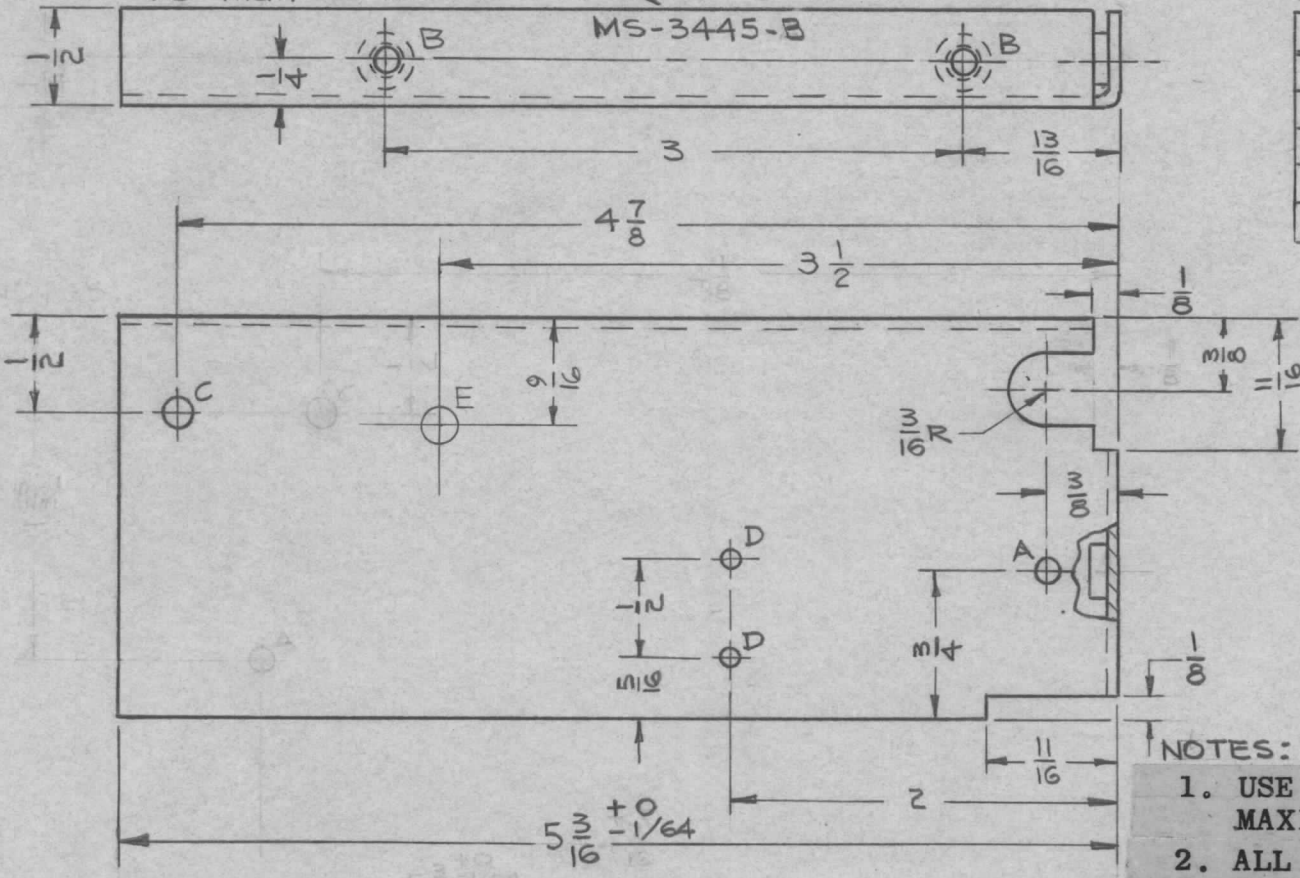
6-24-63

MS-3445

B

METAL STAMP TMC PART NO 1/8 HIGH GOTHIC

MS-3445-B



HOLE	DESCRIPTION	REQD
A	1/8 DIA	1
B	.191-.194 DIA	3
C	.158 ± .002 DIA	1
D	.086 DIA	2
E	1/64 (.171) DIA	1

NOTES:

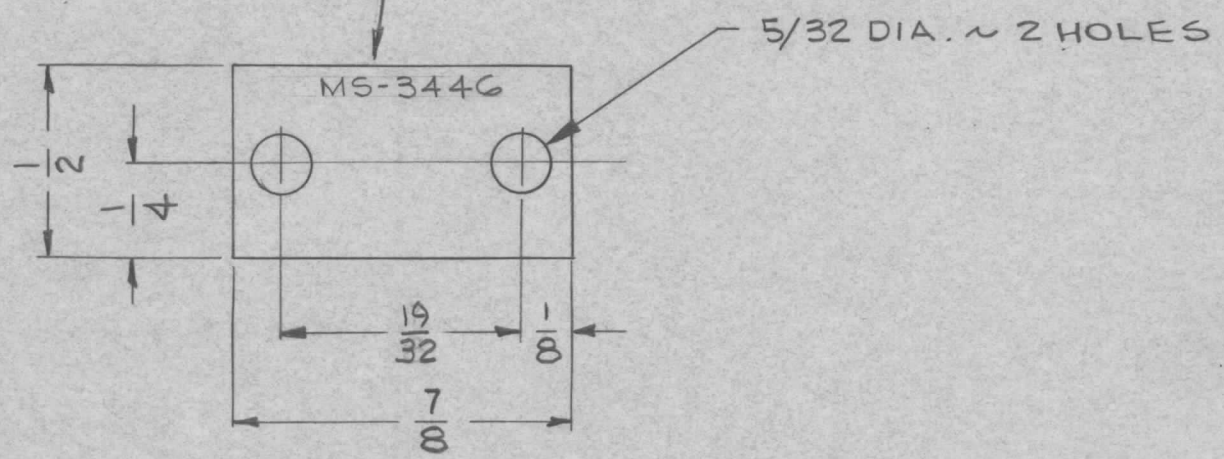
1. USE MATERIAL THICKNESS FOR MAXIMUM RADIUS ON ALL BENDS.
2. ALL ANGULAR BENDS 90°.
3. REMOVE ALL BURRS AND SHARP EDGES.

3	1	NT-129-632-4	NUT, ROUND, SWAGE TYPE	
REQ. ITEM	PART NO.		DESCRIPTION	SYMBOL
	064 THK		THE TECHNICAL MATERIEL CORP.	
	STOCK SIZE		MAMARONECK, NEW YORK	
	ALUMINUM		SHIELD, RF CHANNEL A	
	MATERIAL		RF SHIELD CHANNEL A	
	5052-H32		JAZ	JAZ 8/13/63
	TYPE & TEMPER	HEAT TREAT. SPEC.	DRAWN	CHECKED
	S404 YEL IRIDITE			
	FINISH & SPEC. NO.	ELEC. DES. APP.	MECH. DES. APP.	
				MS-3445 B

B	UPDATED DWG	12/18/63	10616	JAZ	JAZ	JAZ
A	(1) "A" & (1) "C" HOLE DELETED TITLE CLARIFIED	9-12-63	9897	JAZ	JAZ	JAZ
SYM	DESCRIPTION	DATE	CH. NO.	DRAFTS	CHECKER	ENG. APP.
UNLESS OTHERWISE SPECIFIED DIMENSIONS ARE IN INCHES AND INCLUDE CHEMICALLY APPLIED OR PLATED FINISHES		SCALE 1/1				
DECIMALS .X ± .05 .XX ± .01 .XXX ± .005	TOLERANCES	FRACTIONS ± 1/64 ANGLES ± 0° 30'	CODE			

REQ. PER UNIT	USED ON			MS-3446
	MODEL	ASS'Y. NO.	DATE	
1	TTRR,TRT		7-10-63	

METAL STAMP TMC PART NO. 1/8 HIGH GOTHIC



REQ.	ITEM	PART NO.	KOHN DESCRIPTION				SYMBOL	
		.040 THK.	THE TECHNICAL MATERIEL CORP.					
		STOCK SIZE	MAMARONECK, NEW YORK					
		ALUMINUM	PLATE, CRYSTAL RETAINING					
		MATERIAL						
SYM	DESCRIPTION	DATE	CH. NO.	DRAFTS	CHECKER	ENG. APP.		
UNLESS OTHERWISE SPECIFIED DIMENSIONS ARE IN INCHES AND INCLUDE CHEMICALLY APPLIED OR PLATED FINISHES		SCALE		2:1				
		5052-H32			DRAWN		CHECKED	
		3404 YELLOW IRIDITE	HEAT TREAT. SPEC.		DRAWN		FINAL APPROVAL	
DECIMALS .X ± .05 .XX ± .01 .XXX ± .005	TOLERANCES	FRACTIONS ± 1/64 ANGLES ± 0° 30'	CODE A	FINISH & SPEC. NO.		ELEC. DES. APP. MECH. DES. APP.		
				ROW KOHN 17 JULY 1963		MS-3446		

THE CONTENTS OF THIS DRAWING ARE THE EXCLUSIVE PROPERTY OF THE TECHNICAL MATERIEL CORP. ITS UNAUTHORIZED USE FOR REPRODUCTION IN WHOLE OR IN PART IS STRICTLY FORBIDDEN.

REQ. PER UNIT

2

USED ON

MODEL

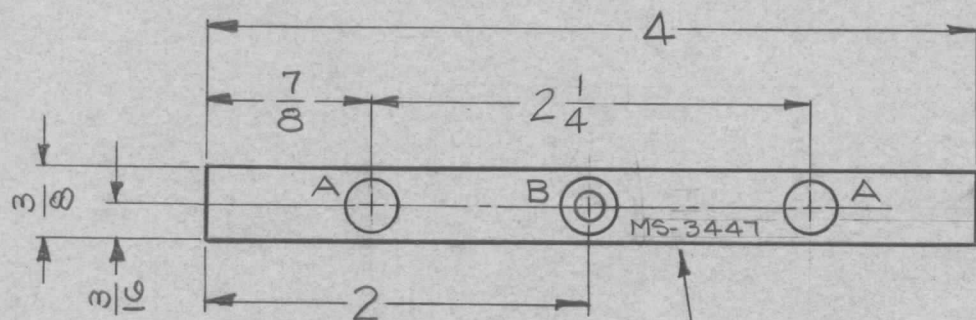
DDR-8

ASS'Y. NO.

DATE

7-18-63

MS-3447



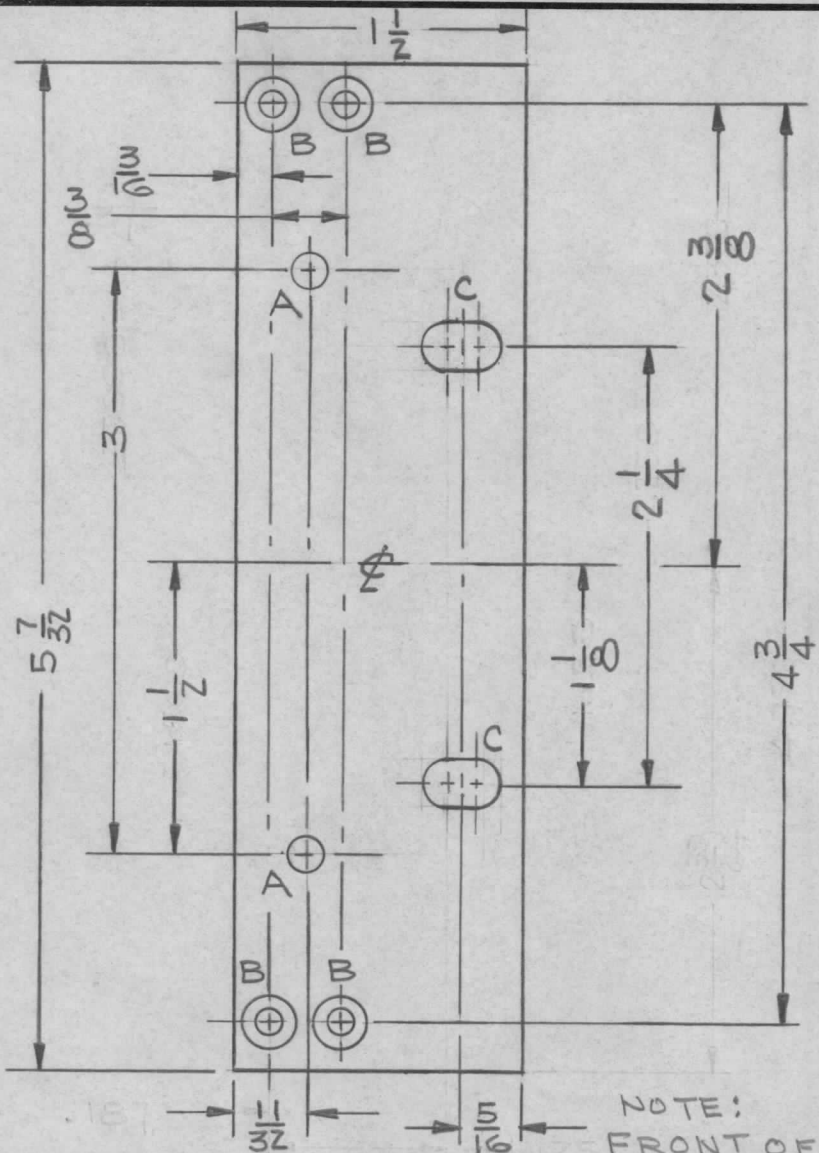
LEGEND		
HOLE	DESCRIPTION	REQ
A	1/4 DIA.	2
B	.144 DIA. HOLE, C'SINK 82° TO .284 DIA.	1

METAL STAMP TMC PART NO. 1/8 HIGH GOTHIC.

UNLESS OTHERWISE SPECIFIED:

1- REMOVE ALL BURRS AND SHARP EDGES.

SYM	DESCRIPTION	DATE	CH. NO.	DRAFTS	CHECKER	ENG. APP.	REQ. ITEM	PART NO.	I. JOHNSON	DESCRIPTION	SYMBOL
								.062 THK		THE TECHNICAL MATERIEL CORP.	
								STOCK SIZE		MAMARONECK, NEW YORK	
								ALUMINUM		PANEL SHIM - DVC	
								MATERIAL			
								5052-H32	<i>G. Soren</i>	<i>M. Pote</i>	<i>YFA</i> 7-18-63
								TYPE & TEMPER			
								HEAT TREAT. SPEC.			
								DRAWN			
								CHECKED			
								FINAL APPROVAL			
								5052-H32			
								304-YELLOW IRIDITE			
								FINISH & SPEC. NO.			
								ELEC. DES. APP.			
								MECH. DES. APP.			
										MS-3447	



REQ. PER UNIT	USED ON			MS-3451	A
	MODEL	ASS'Y. NO.	DATE		
2	TMX-1,Z				

HOLE LEGEND		
LTR	DESCRIPTION	QTY
A	3/16 DIA DRILL	2
B	.144 DIA THRU & CSK 82° TO .284 DIA.	4
C	3/8 x 1/4 SLOT	2

MACHINING:

1. MILL ALL EDGES.
2. HOLES MUST BE DRILLED, UNLESS OTHERWISE SPECIFIED.
3. LATERAL BOW OF PANEL MUST BE KEPT TO .031 TOLERANCE.
4. PANEL MUST BE FREE OF ALL MACHINING MARKS, GOUGES AND SCRATCHES. IF NECESSARY, SAND FRONT OF PANEL WITH NO. 120 GRIT SANDPAPER.

FINISH NOTES:

1. S404 - IRIDITE 14-2 AL-COAT.
2. S114 - ZINC CHROMATE PRIMER) FRONT AND
3. S115 - SMOOTH GRAY ENAMEL) EDGES ONLY

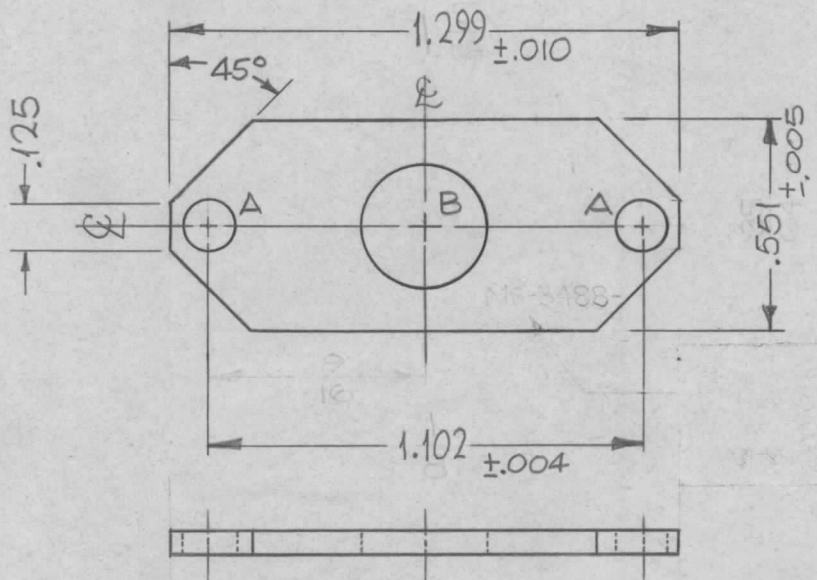
NOTE: FRONT OF PANEL SHOWN

REQ. ITEM	PART NO.	JOHNSON	DESCRIPTION	SYMBOL					
	3/16 THICK		THE TECHNICAL MATERIEL CORP. MAMARONECK, NEW YORK						
	ALUMINUM		PANEL, FRONT SHELF						
SYMBOL	DESCRIPTION	DATE	CH. NO.	DRAFTS	CHECKER	ENG. APP.	MATERIAL		
A	REDRAWN WITH NO CHANGES	9-5-63	9910	AK	JLB	RJB	ALUMINUM		
UNLESS OTHERWISE SPECIFIED DIMENSIONS ARE IN INCHES AND INCLUDE CHEMICALLY APPLIED OR PLATED FINISHES		SCALE	2024-T4		RINALDI	FILE 9/5/63			
TOLERANCES		CODE	TYPE & TEMPER		CHECKED	FINAL APPROVAL	MS-3451 A		
DECIMALS .X ± .05 .XX ± .01 .XXX ± .005		FRACTIONS ± 1/64 ANGLES ± 0° 30'	HEAT TREAT. SPEC.		ELEC. DES. APP.		MECH. DES. APP.		

TMC P/N	MFG P/N
MS 3488-1	2213HB

REQ. PER UNIT	USED ON		
	MODEL	ASS'Y. NO.	DATE
1	VLR-1	A-3210	8-3-63
1	VLR-1	A-3271	8-3-63
1	VLR-1	A-3272	8-3-63

MS 3488 B



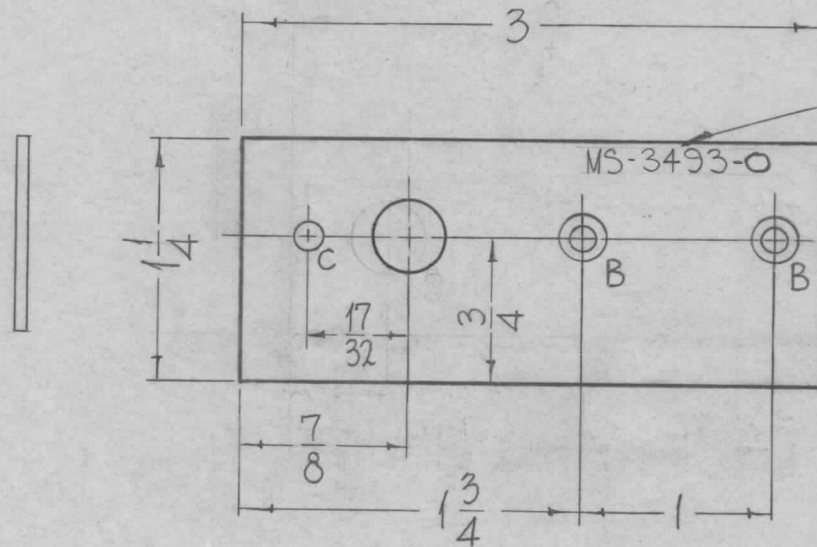
LEGEND		
HOLE	DESCRIPTION	REQ
A	1/8 DIA	2
B	.330 MIN. DIA.	1

NOTE:
THIS ITEM IS A STANDARD PURCHASED PART FROM S401-118.

B	METAL STAMP NOTE DELETED. A HOLE WAS 5/16 DIA. TITLE CHANGE 1.102 WAS 1-1/8, FIN., MTL, TEMP AD. 1.299 WAS 1-5/16, .551 WAS 35/64 .125, CHART, NOTE, ADDED	7-29-64	11870	SRG	JCB	KA
A	ON METAL STAMP TMC PART # WAS MS3448	7.22.64	11870	NB	@	
O	ORIGINAL RELEASE FOR PRODUCTION	5-11-64	0	A.M	@	
X1	TYPE (2213) ADDED TO S401-118	12/19/63	1		MP	W
SYM	DESCRIPTION	DATE	CH. NO.	DRAFTS	CHECKER	ENG. APP.
UNLESS OTHERWISE SPECIFIED DIMENSIONS ARE IN INCHES AND INCLUDE CHEMICALLY APPLIED OR PLATED FINISHES		SCALE	2:1			
DECIMALS .X ±.05 .XX ±.01 .XXX ±.005		TOLERANCES		FRACTIONS ± 1/64 ANGLES ± 0° 30'		CODE C
		S401-118 (2213)				

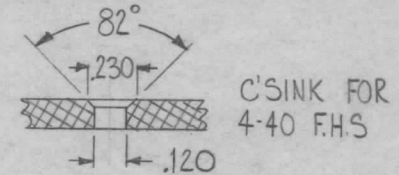
REQ.	ITEM	PART NO.	DESCRIPTION	SYMBOL
			M. GELLMAN	
		1/16 THK.	THE TECHNICAL MATERIEL CORP. MAMARONECK, NEW YORK	
		STOCK SIZE		
		BRASS	RETAINER; COIL	
		MATERIAL		
		1/2 HARD		
		TYPE & TEMPER	DRAWN	CHECKED
		HEAT TREAT. SPEC.	G. Leman	@
			FINAL APPROVAL	
		CAD. PLATE		
		FINISH & SPEC. NO.	ELEC. DES. APP.	MECH. DES. APP.
			MS-3488	B

REQ. PER UNIT	USED ON			MS-3493	O
	MODEL	ASS'Y. NO.	DATE		
1	GPT-200K	AX-396	9-6-63		



METAL STAMP TMC PART NO.
1/8 HIGH GOTHIC AS SHOWN.

HOLE	DESCRIPTION	REQ.
A	3/8 DIA.	1
C	9/64 DIA	1

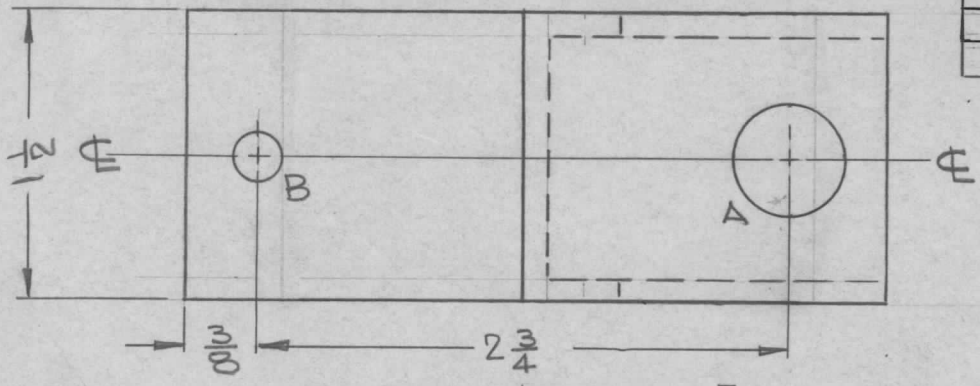


"B" DETAIL
2 REQ.

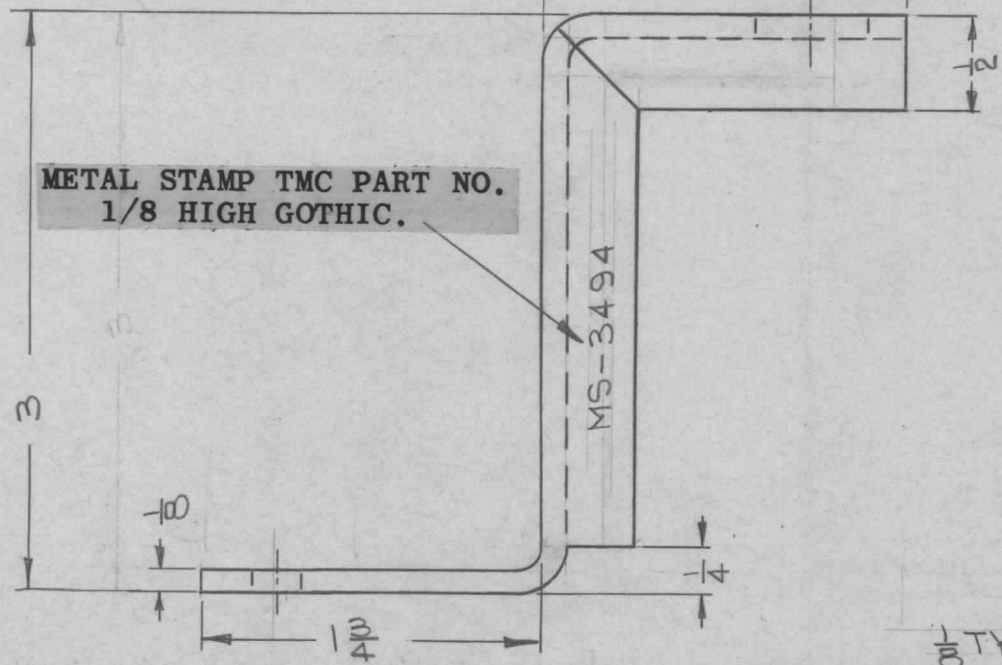
REF: LD-1263

REQ.	ITEM	PART NO.	F. BUDETTI	DESCRIPTION	SYMBOL								
		.064		THE TECHNICAL MATERIEL CORP. MAMARONECK, NEW YORK									
		STOCK SIZE											
		ALUMINUM		PLATE, RF, FILTER MOUNTING									
0	ORIGINAL RELEASE FOR PRODUCTION	3-264	A.M.										
SYM	DESCRIPTION	DATE	CH. NO.	DRAFTS	CHECKER	ENG. APP.	MATERIAL	SCALE	TYPE & TEMPER	HEAT TREAT. SPEC.	DRAWN	CHECKED	FINAL APPROVAL
	UNLESS OTHERWISE SPECIFIED DIMENSIONS ARE IN INCHES AND INCLUDE CHEMICALLY APPLIED OR PLATED FINISHES						5052-H32	1" = 1"			W.A. FRANCO	JCS	RDC
	DECIMALS .X ± .05 .XX ± .01 .XXX ± .005	TOLERANCES	FRACTIONS ± 1/64 ANGLES ± 0° 30'	CODE A			S404 YELLOW IRIDITE				DBB	mc 12/7/63	MS-3493 O
							FINISH & SPEC. NO.				ELEC. DES. APP.	MECH. DES. APP.	

REQ. PER UNIT	USED ON			MS-3494 Ø
	MODEL	ASS'Y. NO.	DATE	
2	TER-25K/600B		9-9-63	
2	TER-18K/600BF		9-9-63	



- UNLESS OTHERWISE SPECIFIED:**
1. USE MATERIAL THICKNESS FOR MAXIMUM RADIUS ON ALL BENDS.
 2. ALL ANGULAR BENDS 90°.
 3. REMOVE ALL BURRS AND SHARP EDGES.



METAL STAMP TMC PART NO. 1/8 HIGH GOTHIC.

MS-3494

HOLE REQ
 A—9/16 DIA — 1
 B—15/64 DIA — 2

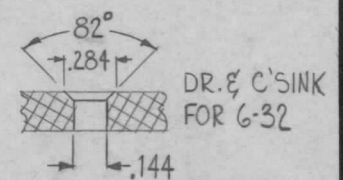
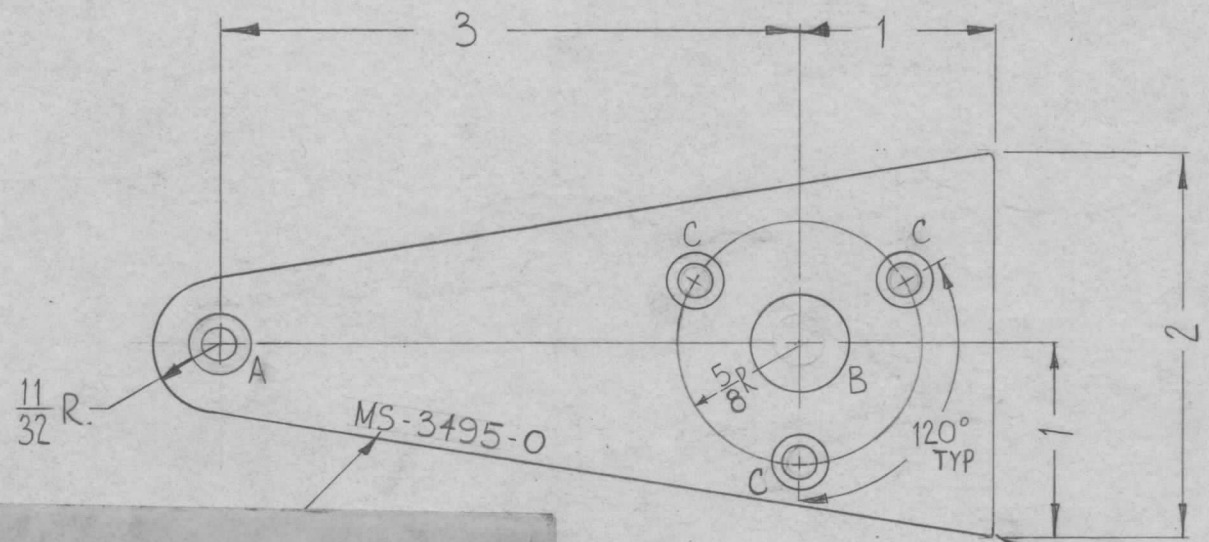
1/8 TYP.

REF: LD-1296 & LD-1297

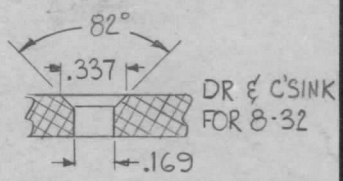
						REQ. ITEM	PART NO.	F. BUDETTI	DESCRIPTION	SYMBOL
Ø	ORIGINAL RELEASE FOR PRODUCTION	3/31/67	Ø	CV		1 1/2 x 1/2 x 1/8 CHANNEL			THE TECHNICAL MATERIEL CORP. MAMARONECK, NEW YORK	
X1	TER-18K/600BF WAS TER-15K/600BF	1-10-64		SRG		ALUMINUM			BRACKET, MOUNTING, CAPACITOR	
SYM	DESCRIPTION	DATE	CH. NO.	DRAFTS	CHECKER	ENG. APP.	MATERIAL			
UNLESS OTHERWISE SPECIFIED DIMENSIONS ARE IN INCHES AND INCLUDE CHEMICALLY APPLIED OR PLATED FINISHES		SCALE					G063-T5			
		1:1					TYPE & TEMPER	HEAT TREAT. SPEC.	DRAWN	CHECKED
DECIMALS .X ± .05 .XX ± .01 .XXX ± .005		FRACTIONS ± 1/64 ANGLES ± 0° 30'		CODE			S404-IRIDITE			
TOLERANCES							FINISH & SPEC. NO.	ELEC. DES. APP.	MECH. DES. APP.	MS-3494 Ø

REQ. PER UNIT	USED ON			MS-3495	O
	MODEL	ASS'Y. NO.	DATE		
5	GPT-200K (AX-395)	A-3260	9-11-63		

B ~ 1/2 DIA 1 REQ.



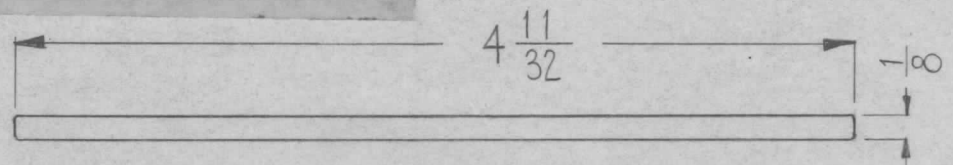
"C" DETAIL (3 REQ.)



"A" DETAIL (1 REQ.)

ROUND OFF SHARP EDGES

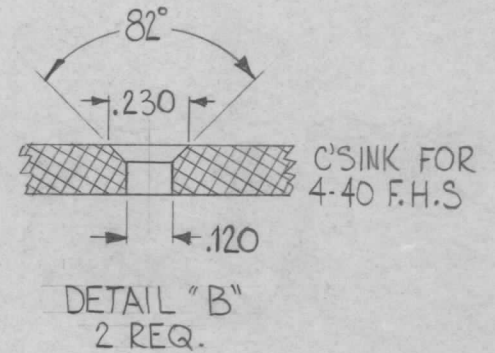
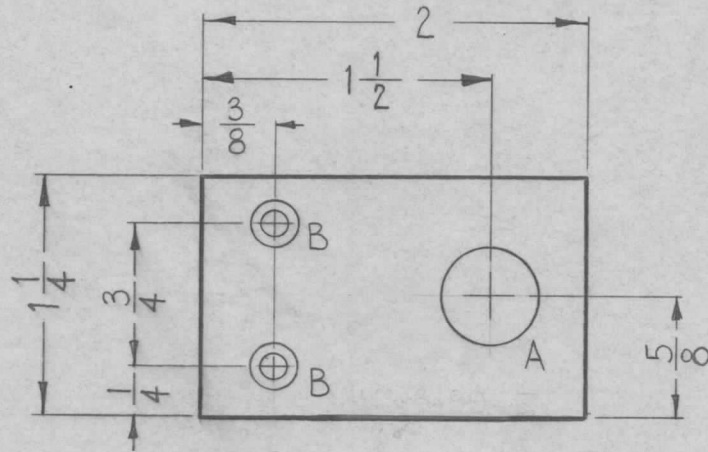
METAL STAMP TMC PART NO. 1/8 HIGH GOTHIC. CUT HI GUARAN 6-6



SYM	DESCRIPTION	DATE	CH. NO.	DRAFTS	CHECKER	ENG. APP.	REQ. ITEM	PART NO.	F. BUDETTI	DESCRIPTION	SYMBOL
							1/8			THE TECHNICAL MATERIEL CORP. MAMARONECK. NEW YORK	
							STOCK SIZE				
							ALUMINUM			PLATE, KNOB HANDLE	
	ORIGINAL RELEASE FOR PRODUCTION	2-2-64									
	UNLESS OTHERWISE SPECIFIED DIMENSIONS ARE IN INCHES AND INCLUDE CHEMICALLY APPLIED OR PLATED FINISHES	SCALE	1:1				5052-H32		W.A. FRANCO	3-30-64	
	DECIMALS .X ± .05 .XX ± .01 .XXX ± .005	FRACTIONS ± 1/64 ANGLES ± 0° 30'	CODE	A			S197 BLACK MATTE		2/28/63		MS-3495 O
	TOLERANCES						FINISH & SPEC. NO.		ELEC. DES. APP.	MECH. DES. APP.	

REQ. PER UNIT	USED ON			MS-3499	A
	MODEL	ASS'Y. NO.	DATE		
1	GPT-200K	AX-397	9-14-63		
1	GPT-10K	AX-504	5-15-64		

HOLE	DESCRIPTION	REQ.
A	1/2 DIA.	1



METAL STAMP THIS PART
 IN BOLD GOTHIC AS SHOWN
 WITH LATEST REVISION
 LETTER

LD-1539 (1) AX504
 REF: LD-1298 (1) AX397

REQ.	ITEM	PART NO.	F. BUDETTI			DESCRIPTION	SYMBOL
		.064				THE TECHNICAL MATERIEL CORP. MAMARONECK, NEW YORK	
A	CLERICAL CHANGE	1-14-65	#	2.L.	@	ALUMINUM	PLATE, RF FILTER MOUNTING
O	ORIGINAL RELEASE FOR PRODUCTION	5/27/64	O	A.M.			
SYM	DESCRIPTION	DATE	CH. NO.	DRAFTS	CHECKER	ENG. APP.	
UNLESS OTHERWISE SPECIFIED DIMENSIONS ARE IN INCHES AND INCLUDE CHEMICALLY APPLIED OR PLATED FINISHES		SCALE	1:1				
		5052-H32			W.A. FRANCO	aa	Rat
		TYPE & TEMPER	HEAT TREAT. SPEC.	DRAWN	CHECKED	FINAL APPROVAL	
DECIMALS .X ± .05 .XX ± .01 .XXX ± .005		S404 YELLOW TRIDITE		2 B		MS-3499	
FRACTIONS ± 1/64		FINISH & SPEC. NO.		ELEC. DES. APP.		MECH. DES. APP.	
TOLERANCES		CODE				A	
ANGLES ± 0° 30'							