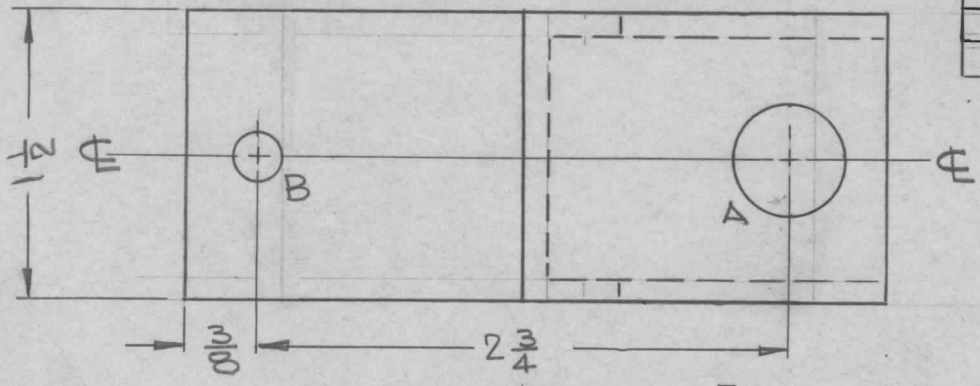
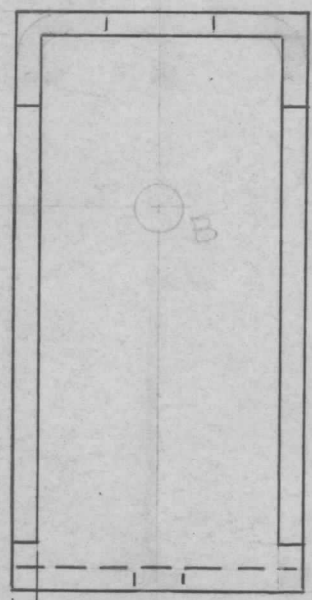
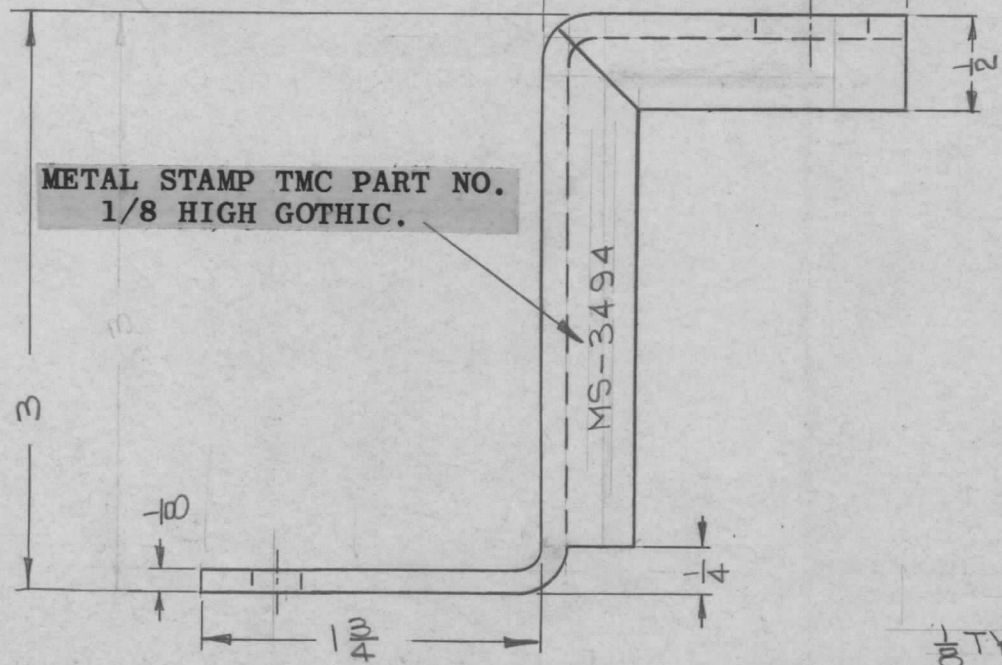


| REQ. PER UNIT | USED ON | | | MS-3494 Ø |
|---------------|---------------|------------|--------|-----------|
| | MODEL | ASS'Y. NO. | DATE | |
| 2 | TER-25K/600B | | 9-9-63 | |
| 2 | TER-18K/600BF | | 9-9-63 | |



- UNLESS OTHERWISE SPECIFIED:**
1. USE MATERIAL THICKNESS FOR MAXIMUM RADIUS ON ALL BENDS.
 2. ALL ANGULAR BENDS 90°.
 3. REMOVE ALL BURRS AND SHARP EDGES.



HOLE REQ
 A—9/16 DIA — 1
 B—15/64 DIA — 2

1/8 TYP.

REF: LD-1296 & LD-1297

| | | | | | | | | | | | |
|---|---------------------------------|---|---------|------------|---------|---------------------------|--------------------|-------------------|--|--------------|----------------|
| | | | | | | REQ. ITEM | PART NO. | F. BUDETTI | DESCRIPTION | SYMBOL | |
| Ø | ORIGINAL RELEASE FOR PRODUCTION | 3/31/67 | Ø | CV | | 1 1/2 x 1/2 x 1/8 CHANNEL | | | THE TECHNICAL MATERIEL CORP. MAMARONECK, NEW YORK | | |
| X1 | TER-18K/600BF WAS TER-15K/600BF | 1-10-64 | | SRG | | ALUMINUM | | | BRACKET, MOUNTING, CAPACITOR | | |
| SYM | DESCRIPTION | DATE | CH. NO. | DRAFTS | CHECKER | ENG. APP. | MATERIAL | | | | |
| UNLESS OTHERWISE SPECIFIED DIMENSIONS ARE IN INCHES AND INCLUDE CHEMICALLY APPLIED OR PLATED FINISHES | | SCALE | | | | | G063-T5 | | <i>R. Chinn</i> 9-9-63 | <i>J. De</i> | <i>2-3</i> |
| | | 1:1 | | | | | TYPE & TEMPER | HEAT TREAT. SPEC. | DRAWN | CHECKED | FINAL APPROVAL |
| DECIMALS .X ± .05 .XX ± .01 .XXX ± .005 | | FRACTIONS ± 1/64 ANGLES ± 0° 30' | | TOLERANCES | | | S404-IRIDITE | | | | |
| | | CODE | | | | | FINISH & SPEC. NO. | ELEC. DES. APP. | MECH. DES. APP. | MS-3494 Ø | |