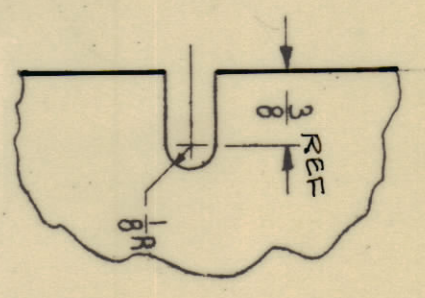
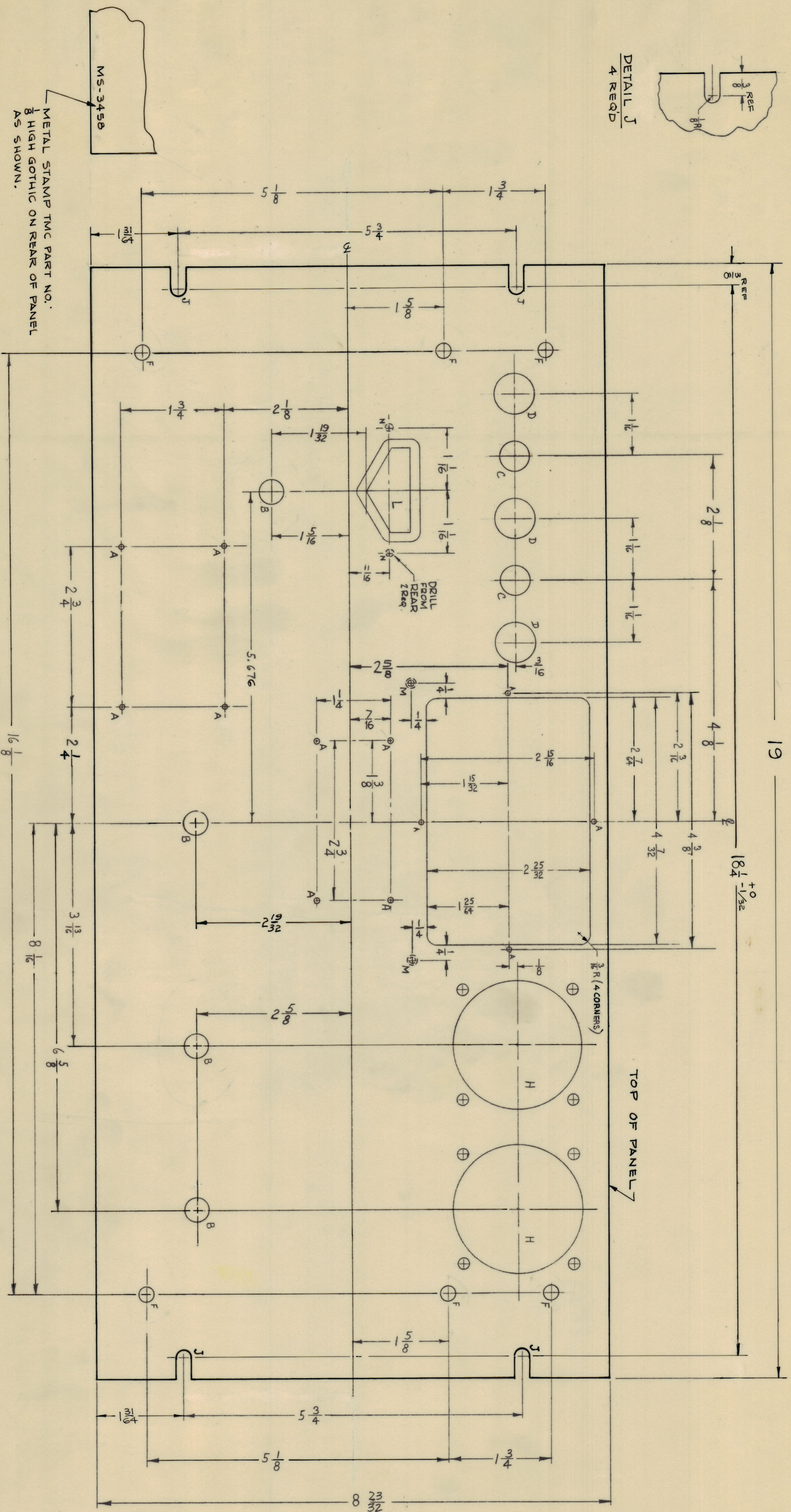


IT IS FOUND DESIRABLE TO CHANGE ANY TOLERANCE OR OTHER DETAIL SPECIFIED ON THIS DRAWING NOTIFY THE PURCHASER PROMPTLY. MAXIMUM ALLOWABLE TOLERANCES HAVE BEEN DETERMINED BY THE PURCHASER'S QUALITY CONTROL DEPARTMENT. REMOVE ALL BURRS AND SHARP EDGES

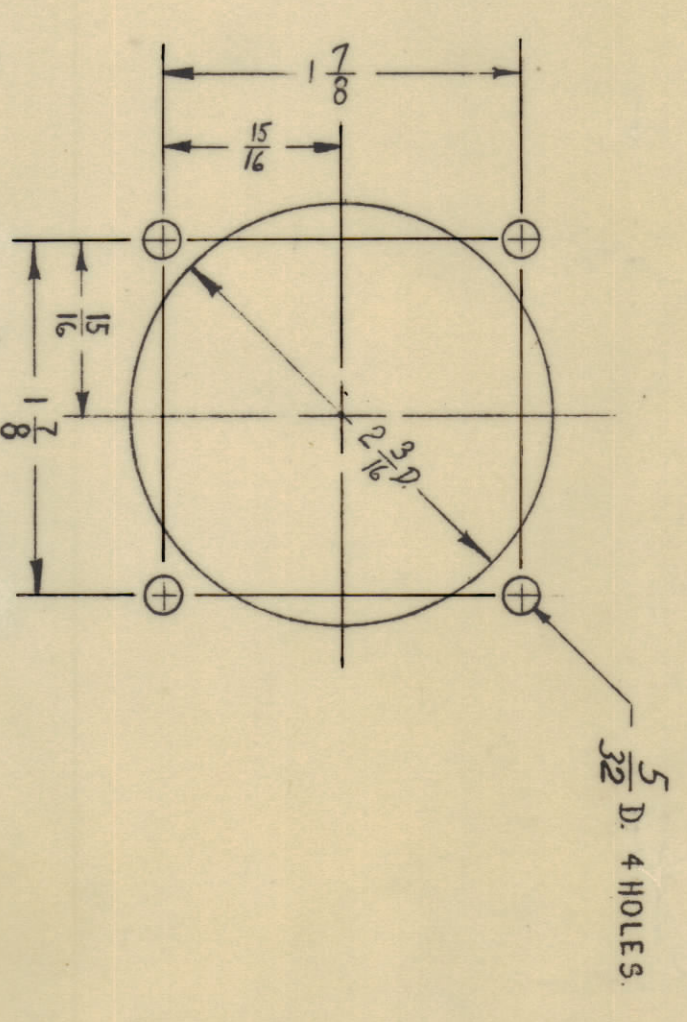


DETAIL J
4 REQ'D



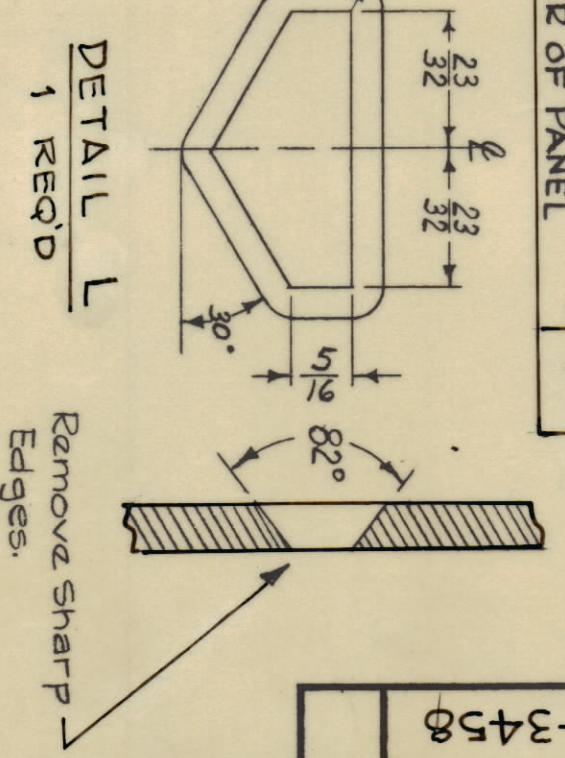
FRONT OF PANEL SHOWN

TOP OF PANEL

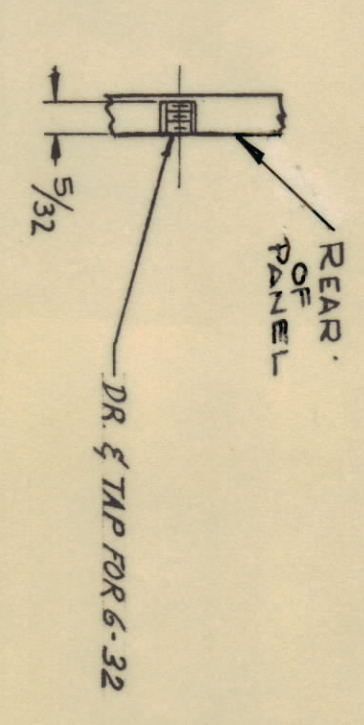


DETAIL H
2 REQ'D

HOLE	DESCRIPTION	REQ'D
A	#47 DRILL (.0078) DIA	12
B	1/32 (.406) DIA	4
C	1/2 (.500) DIA	2
D	1/16 (.687) DIA	3
F	1/16 (.250) DIA	6
H	SEE DETAIL "H"	8
J	SEE DETAIL "J"	4
L	SEE DETAIL "L"	1
M	SEE DETAIL "M"	2
N	#55 DRILL-1/8 DEEP FROM REAR OF PANEL	2



DETAIL L
1 REQ'D



DETAIL M
2 REQ'D

- MACHINING—
- 1- LATERAL BOW OF PANEL MUST BE KEPT TO .031 TOLERANCE
 - 2- MILL ALL EDGES.
 - 3- HOLES MUST BE DRILLED.
 - 4- PANEL MUST BE FREE OF ALL MACHINING MARKS GOUGES & SCRATCHES. IF NECESSARY SAND FRONT OF PANEL WITH NO. 120 GRIT SANDPAPER.

FINISH—
S404 YELLOW IRIDIOTE
S114 ZINC CHROMATE PRIMER 3 FRONT & 3
S115 TMC SMOOTH GREY ENAMEL 3 EDGES ONLY

REF: LD-1346

ISSUE / YEAR	CHANGED FROM	DATE / CH. NO. / REASON	CHKD BY
ALL	TOLERANCES	SCALE: N.O.S.	
OTHERS			

REQ. UNIT	CHG-2A	PROJECT NO.	8-19-63
MOBL		USED ON	
ASBY NO.		DATE	

REQ. ITEM	PART NO.	DESCRIPTION	BY/NO.
3/16 THK		THE TECHNICAL MATERIAL CORP.	
STOCK SIZE		MANHATTEN, NEW YORK	
MATERIAL		ALUMINUM	
WEIGHT PER SQ. IN.		2024-T3	
TYPE & TEMPER		MACHINING	
HEAT TREAT SPEC.			
SEE NOTE			
FINISH & SPEC. NO.			

MS-3458