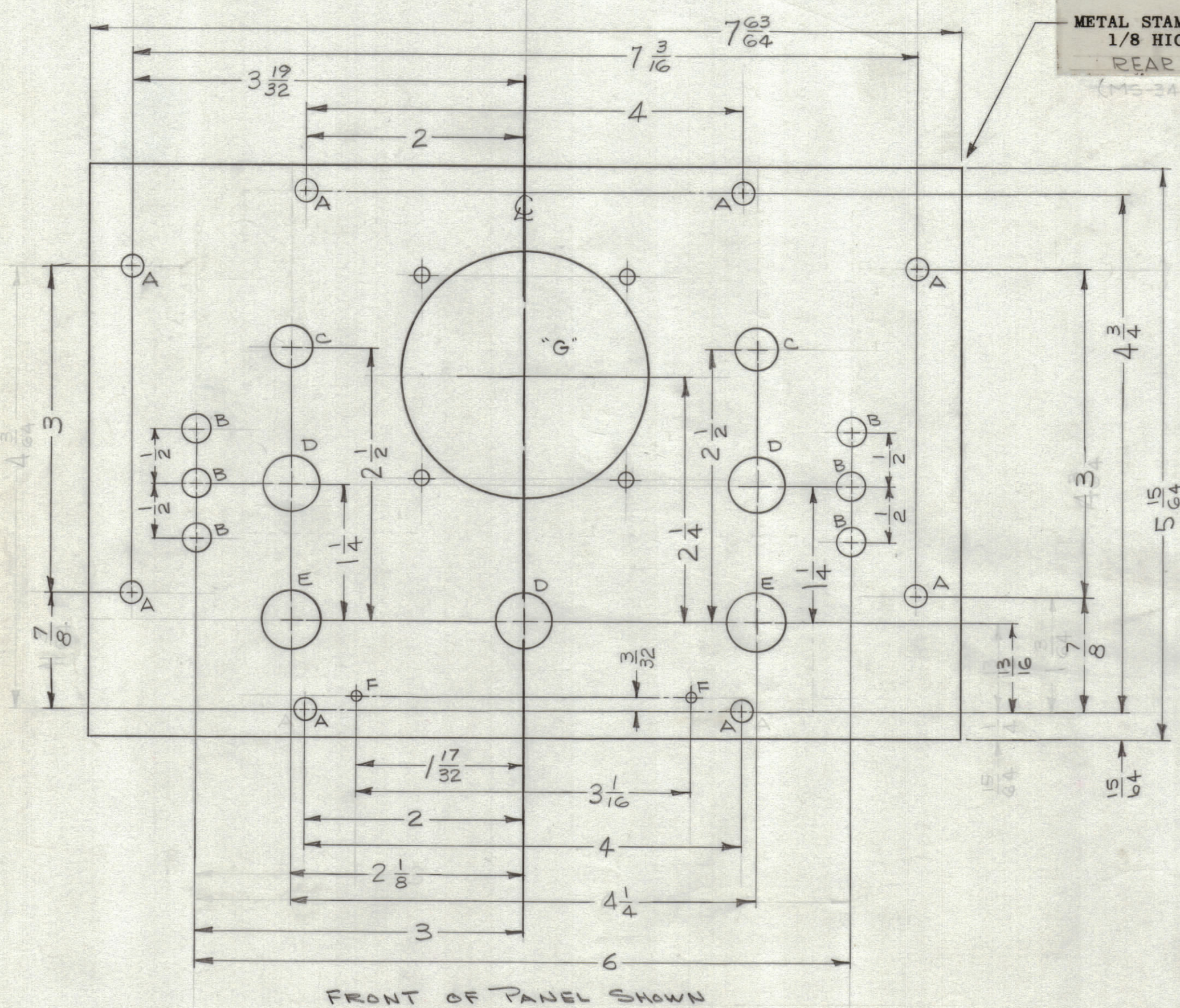
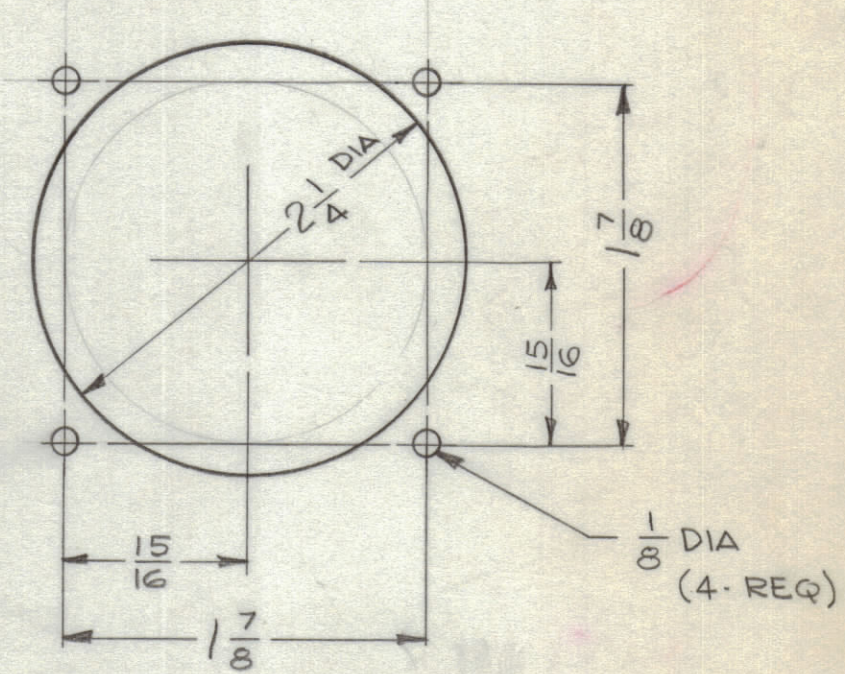


REVISIONS						
ZONE	SYM	DESCRIPTION	DATE	E.M.N. NO.	DRAFT	CHKD APPD



METAL STAMP TMC PART NO. (MS-3454)  
 1/8 HIGH GOTHIC, ON  
 REAR OF PANEL  
 (MS-3454 / LD-1344)

LEGEND		
HOLE	DESCRIPTION	REQ
A	3/16 DIA.	8
B	.257 DIA.	6
C	3/8 DIA.	2
D	1/2 DIA.	3
E	17/32 DIA.	2
F	.076 DIA.	2
G	SEE DETAIL	1



FRONT OF PANEL SHOWN

**MACHINING:**

1. MILL ALL EDGES.
2. HOLES MUST BE DRILLED, UNLESS OTHERWISE SPECIFIED.
3. LATERAL BOW OF PANEL MUST BE KEPT TO .031 TOLERANCE.
4. PANEL MUST BE FREE OF ALL MACHINING MARKS, GOUGES AND SCRATCHES. IF NECESSARY, SAND FRONT OF PANEL WITH NO. 120 GRIT SANDPAPER.

**FINISH NOTES:**

1. S404 - IRIDITE 14-2 AL-COAT.
2. S114 - ZINC CHROMATE PRIMER) FRONT AND
3. S115 - SMOOTH GRAY ENAMEL ) EDGES ONLY

**NOTES**

REF: LD-1344

REQ'D.	ITEM	PART NUMBER	DESCRIPTION	SYMBOL
<b>I. JOHNSON LIST OF MATERIAL</b>				
MATERIAL		THE TECHNICAL MATERIEL CORP.		
3/16 ALUMINUM		MAMARONECK, NEW YORK		
2024-T3		TITLE		
FINISH		FRONT PANEL,		
SEE FINISH NOTES		DEMULTIPLEXER		
UNLESS OTHERWISE SPECIFIED		DRAWN		DATE
DIMENSIONS ARE IN INCHES AND INCLUDE		G. Jensen		7-26-63
CHEMICALLY APPLIED OR PLATED FINISHES		CHECKED		DATE
DECIMALS		ELECT. DES.		DATE
.X ± .05		MECH. DES.		DATE
.XX ± .01		DATE		7-27-63
.XXX ± .005		DATE		7-27-63
TOLERANCES		FINAL APPROVAL		DATE
FRACTIONS ± 1/64		BP		
ANGLES ± 0° 30'		MS-3454		
		SHEET		
		REV. LTR.		

1	RMX, RMX-1	ASS'Y. NO.
QTY./UNIT	MODEL USED ON	
SCALE	CODE	
1:1		

THE CONTENTS OF THIS DRAWING ARE THE EXCLUSIVE PROPERTY OF THE TECHNICAL MATERIEL CORP. ITS UNAUTHORIZED USE OR REPRODUCTION IN WHOLE OR IN PART IS STRICTLY FORBIDDEN.

MS-3454