

THE CONTENTS OF THIS DRAWING ARE THE EXCLUSIVE PROPERTY OF THE TECHNICAL MATERIEL CORP. ITS UNAUTHORIZED USE FOR REPRODUCTION IN WHOLE OR IN PART IS STRICTLY FORBIDDEN.

REQ. PER UNIT

USED ON

MODEL

ASS'Y. NO.

DATE

1

HFA-1

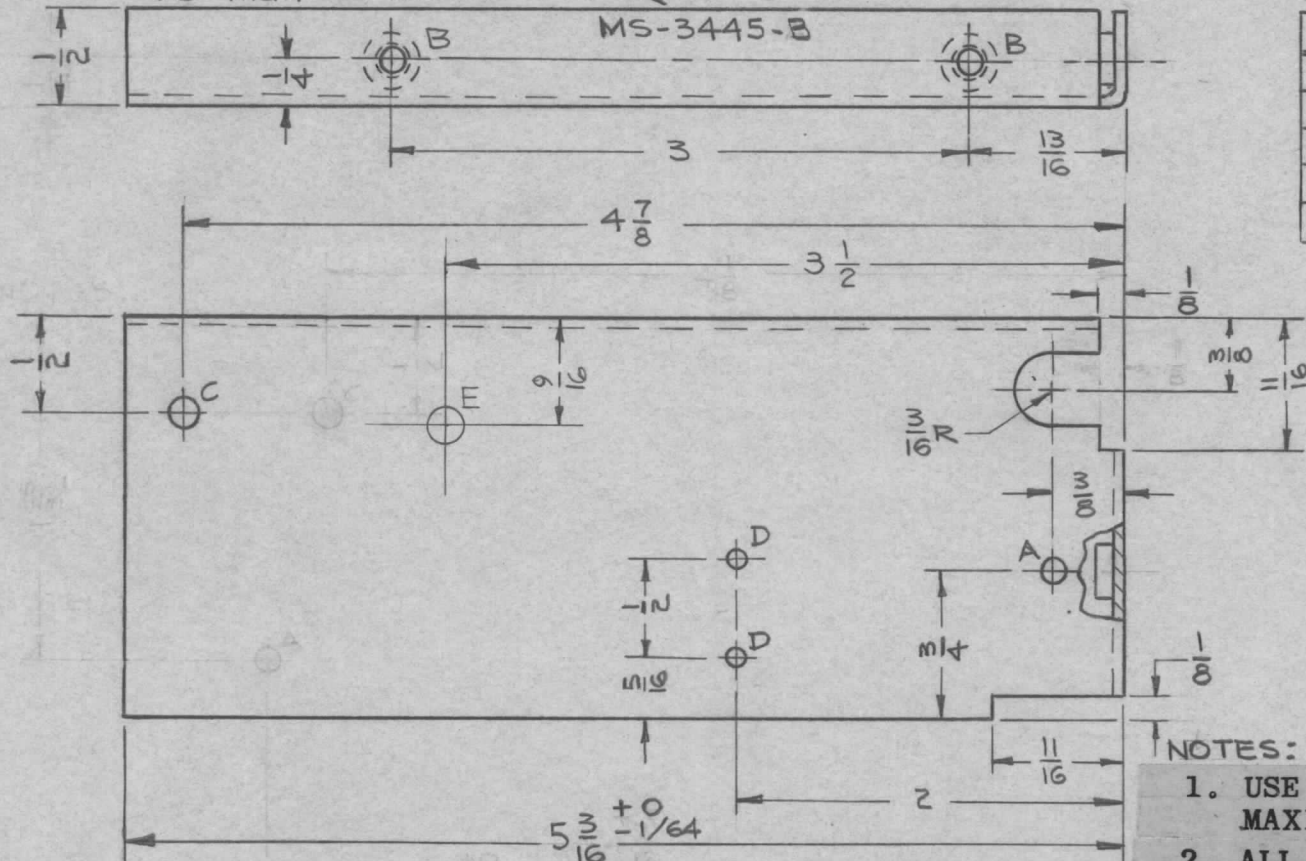
6-24-63

MS-3445

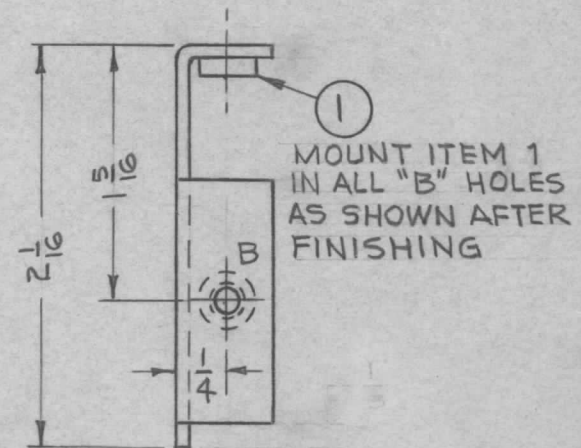
B

METAL STAMP TMC PART NO 1/8 HIGH GOTHIC

MS-3445-B



HOLE	DESCRIPTION	REQD
A	1/8 DIA	1
B	.191-.194 DIA	3
C	.158 ± .002 DIA	1
D	.086 DIA	2
E	1/64 (.171) DIA	1



NOTES:

1. USE MATERIAL THICKNESS FOR MAXIMUM RADIUS ON ALL BENDS.
2. ALL ANGULAR BENDS 90°.
3. REMOVE ALL BURRS AND SHARP EDGES.

REQ. ITEM	PART NO.	DESCRIPTION	SYMBOL
3	1	NT-129-632-4 NUT, ROUND, SWAGE TYPE	
064 THK STOCK SIZE		THE TECHNICAL MATERIEL CORP. MAMARONECK, NEW YORK	
ALUMINUM MATERIAL		SHIELD, RF CHANNEL A	
5052-H32		JAZ	JAZ 8/13/63
TYPE & TEMPER	HEAT TREAT. SPEC.	DRAWN	CHECKED
S404 YEL IRIDITE			
FINISH & SPEC. NO.		ELEC. DES. APP.	MECH. DES. APP.
		MS-3445 B	

SYM	DESCRIPTION	DATE	CH. NO.	DRAFTS	CHECKER	ENG. APP.
B	UPDATED DWG	12/18/63	10616			
A	(1) "A" & (1) "C" HOLE DELETED TITLE CLARIFIED	9-12-63	9897	JAZ	JAZ	JAZ
UNLESS OTHERWISE SPECIFIED DIMENSIONS ARE IN INCHES AND INCLUDE CHEMICALLY APPLIED OR PLATED FINISHES		SCALE 1/1				
DECIMALS .X ± .05 .XX ± .01 .XXX ± .005	TOLERANCES	FRACTIONS ± 1/64 ANGLES ± 0° 30'	CODE			