

THE CONTENTS OF THIS DRAWING ARE THE EXCLUSIVE PROPERTY OF THE TECHNICAL MATERIEL CORP. ITS UNAUTHORIZED USE FOR REPRODUCTION IN WHOLE OR IN PART IS STRICTLY FORBIDDEN.

REQ. PER UNIT

HFA-1

USED ON

MODEL

ASS'Y. NO.

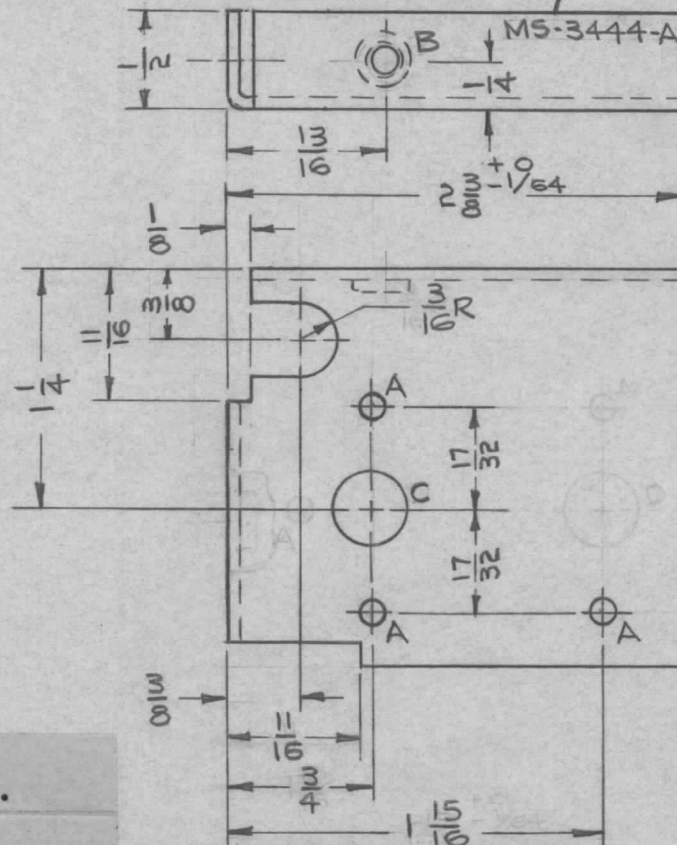
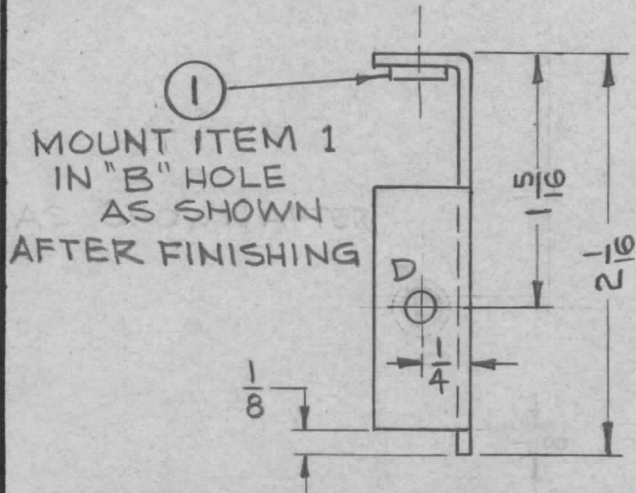
DATE

6-24-63

MS-3444

A

METAL STAMP TMC PART NO. 1/8 HIGH GOTHIC



| HOLE | DESCRIPTION | REQD |
|------|---------------|------|
| A | 1/8 DIA | 3 |
| B | .191-.194 DIA | 1 |
| C | 3/8 DIA | 1 |
| D | 5/32 DIA | 1 |

NOTES:

1. USE MATERIAL THICKNESS FOR MAXIMUM RADIUS ON ALL BENDS.
2. ALL ANGULAR BENDS 90°.
3. REMOVE ALL BURRS AND SHARP EDGES.

| | | | | |
|-----------|----------|--------------------|------------------------|--|
| 1 | 1 | NT-129-632-4 | NUT, ROUND, SWAGE TYPE | |
| REQ. ITEM | PART NO. | DESCRIPTION | | |
| | | SYMBOL | | |
| | | .064 THK | | |
| | | STOCK SIZE | | |
| | | ALUMINUM | | |
| | | MATERIAL | | |
| | | 5052-H32 | | |
| | | TYPE & TEMPER | | |
| | | HEAT TREAT. SPEC. | | |
| | | DRAWN | | |
| | | CHECKED | | |
| | | FINAL APPROVAL | | |
| | | S404 YEL IRIDITE | | |
| | | FINISH & SPEC. NO. | | |
| | | ELEC. DES. APP. | | |
| | | MECH. DES. APP. | | |
| | | MS-3444 | | |
| | | A | | |

| | | | | | | |
|---|---|---------|---------|--------|---------|-----------|
| A | (2) 'A', (1) 'B' & (1) 'C' HOLE DELETED 'D' HOLE & ITEM 1 ADDED | 9-12-63 | 9897 | JAZ | JAZ | JAZ |
| SYM | DESCRIPTION | DATE | CH. NO. | DRAFTS | CHECKER | ENG. APP. |
| UNLESS OTHERWISE SPECIFIED DIMENSIONS ARE IN INCHES AND INCLUDE CHEMICALLY APPLIED OR PLATED FINISHES | | SCALE | | | | |
| | | 1/1 | | | | |
| DECIMALS | FRACTIONS | CODE | | | | |
| .X ± .05 | ± 1/64 | | | | | |
| .XX ± .01 | ANGLES | | | | | |
| .XXX ± .005 | ± 0° 30' | | | | | |
| TOLERANCES | | | | | | |