

THE CONTENTS OF THIS DRAWING ARE THE EXCLUSIVE PROPERTY OF THE TECHNICAL MATERIEL CORP. ITS UNAUTHORIZED USE FOR REPRODUCTION IN WHOLE OR IN PART IS STRICTLY FORBIDDEN.

REQ. PER UNIT

1 HFA-1

USED ON

MODEL

ASS'Y. NO.

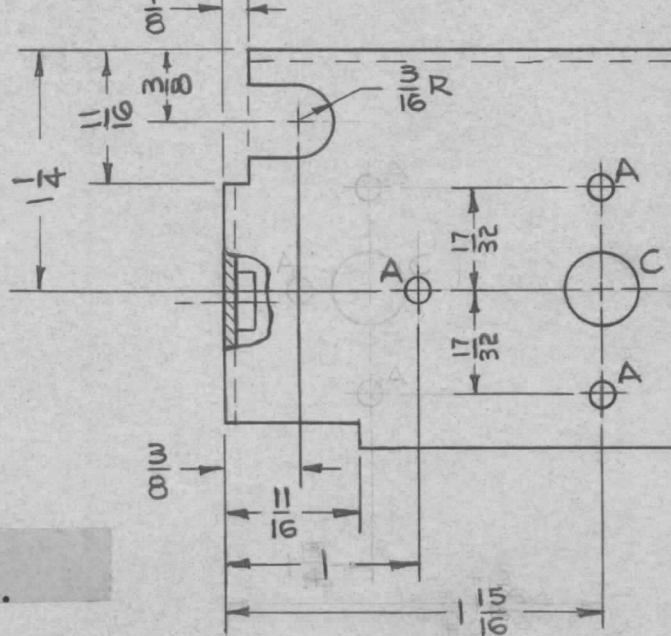
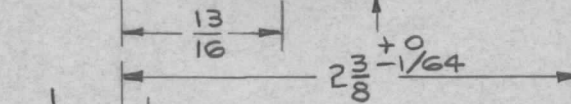
DATE

6-24-63

MS-3442

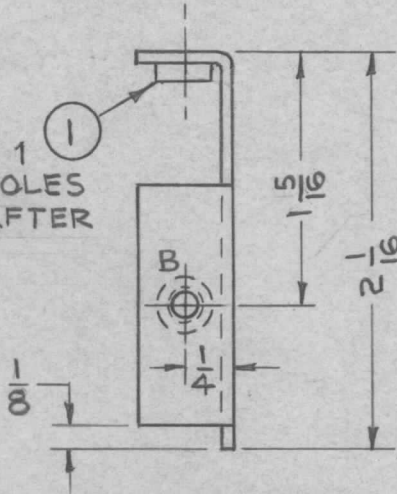
A

METAL STAMP TMC PART NO 1/8 HIGH GOTHIC



HOLE	DESCRIPTION	REQD
A	1/8 DIA	3
B	.191-.194 DIA	2
C	3/8 DIA	1

MOUNT ITEM 1 IN ALL "B" HOLES AS SHOWN AFTER FINISHING



NOTES:

1. USE MATERIAL THICKNESS FOR MAXIMUM RADIUS ON ALL BENDS.
2. ALL ANGULAR BENDS 90°.
3. REMOVE ALL BURRS AND SHARP EDGES.

2	1	NT-129-632-4	NUT, ROUND, SWAGE TYPE	
REQ. ITEM	PART NO.		DESCRIPTION	
	.064 THK		THE TECHNICAL MATERIEL CORP.	
	STOCK SIZE		MAMARONECK. NEW YORK	
A	(2) A & (1) C HOLE DELETED DIM 1 WAS 3/4		BRACKET, SWITCH MOUNTING,	
SYM	DESCRIPTION		CHANNEL B	
	DATE	CH. NO.	DRAFTS	CHECKER
	9-12-63	9897	JAS	Hde
	SCALE 1/1		ENG. APP.	BP
UNLESS OTHERWISE SPECIFIED DIMENSIONS ARE IN INCHES AND INCLUDE CHEMICALLY APPLIED OR PLATED FINISHES				
DECIMALS	FRACTIONS	CODE		
.X ± .05	± 1/64			
.XX ± .01	ANGLES			
.XXX ± .005	± 0° 30'			
TOLERANCES				
5052-H32		HEAT TREAT. SPEC.		DRAWN
S404 YEL IRIDITE		ELEC. DES. APP.		MECH. DES. APP.
FINISH & SPEC. NO.		ELEC. DES. APP.		MECH. DES. APP.
		MS-3442		A