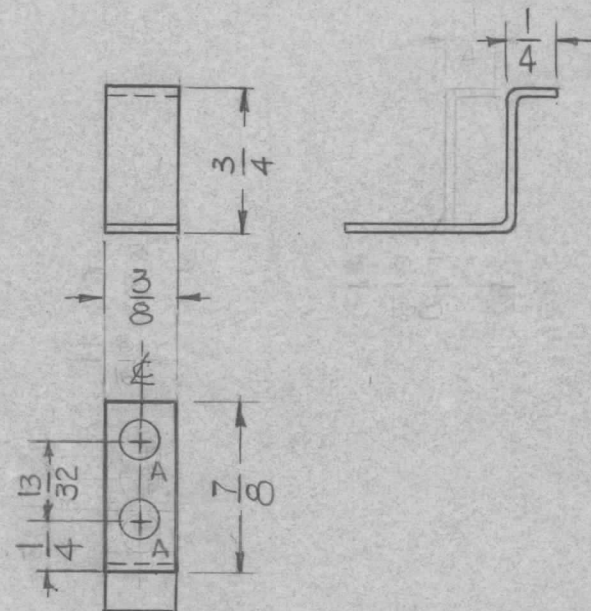


THE CONTENTS OF THIS DRAWING ARE THE EXCLUSIVE PROPERTY OF THE TECHNICAL MATERIEL CORP. ITS UNAUTHORIZED USE FOR REPRODUCTION IN WHOLE OR IN PART IS STRICTLY FORBIDDEN.

REQ. PER UNIT	USED ON		
	MODEL	ASS'Y. NO.	DATE
1	TRX-1		6-8-63

MS-3441

HOLE	DESCRIPTION	REQ
A	3/16 DIA.	2



- UNLESS OTHERWISE SPECIFIED -
 1-USE MATERIAL THICKNESS FOR MAX. RADIUS, ON ALL BENDS.
 2- ALL BENDS TO BE 90°

SYM	DESCRIPTION	DATE	CH. NO.	DRAFTS	CHECKER	ENG. APP.	REQ. ITEM	PART NO.	STRUMER	DESCRIPTION	SYMBOL	
								.051 THK.		THE TECHNICAL MATERIEL CORP. MAMARONECK, NEW YORK		
								STOCK SIZE			BRACKET, CAPACITOR, STOP	
								ALUMINUM				
								MATERIAL				
	UNLESS OTHERWISE SPECIFIED DIMENSIONS ARE IN INCHES AND INCLUDE CHEMICALLY APPLIED OR PLATED FINISHES							5052-H32	G.D.L.	JMA		
		SCALE	1:1									
	DECIMALS .X ± .05 .XX ± .01 .XXX ± .005	FRACTIONS ± 1/64 ANGLES ± 0° 30'	TOLERANCES					S404-IRIDITE 14-2 AL-COAT	JMA	D. Koshani	MS-3441	
								FINISH & SPEC. NO.	ELEC. DES. APP.	MECH. DES. APP.		