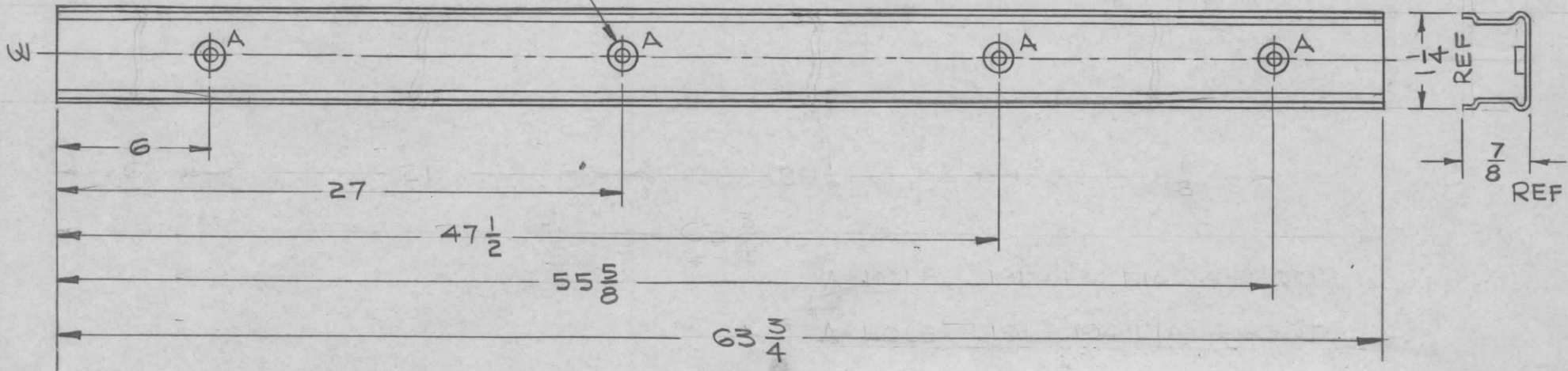


| | | | | |
|---------------|---------|------------|---------|---------|
| REQ. PER UNIT | USED ON | | | MS 3435 |
| | MODEL | ASS'Y. NO. | DATE | |
| 1 | RAK-31A | | 10-8-63 | |

① MOUNT ITEM 1
IN ALL "A" HOLES
AS SHOWN



A HOLE .191-.194 DIA, 4 REQD

REF: TMC PART NO. P0-160

| | | | | | | |
|---|------------------|---|--|-----------------|-----------------|----------------|
| 4 | 1 | NT-129-632-3 | NUT, ROUND, SWAGE TYPE | | A | |
| REQ. ITEM | PART NO. | | DESCRIPTION | | SYMBOL | |
| | SEE REF PART NO. | | THE TECHNICAL MATERIEL CORP. MAMARONECK, NEW YORK | | | |
| | SEE REF PART NO. | | CHANNEL, STRIP, A.C. | | | |
| | MATERIAL | | RAK-31A | | | |
| SYM | DESCRIPTION | DATE | CH. NO. | DRAFTS | CHECKER | ENG. APP. |
| UNLESS OTHERWISE SPECIFIED DIMENSIONS ARE IN INCHES AND INCLUDE CHEMICALLY APPLIED OR PLATED FINISHES | | SCALE NONE | | | | |
| DECIMALS .X ± .05 .XX ± .01 .XXX ± .005 | TOLERANCES | FRACTIONS ± 1/64 ANGLES ± 0° 30' | CODE A | | | |
| SEE REF PART NO. | | TYPE & TEMPER | HEAT TREAT. SPEC. | DRAWN | CHECKED | FINAL APPROVAL |
| SEE REF PART NO. | | FINISH & SPEC. NO. | | ELEC. DES. APP. | MECH. DES. APP. | MS 3435 |