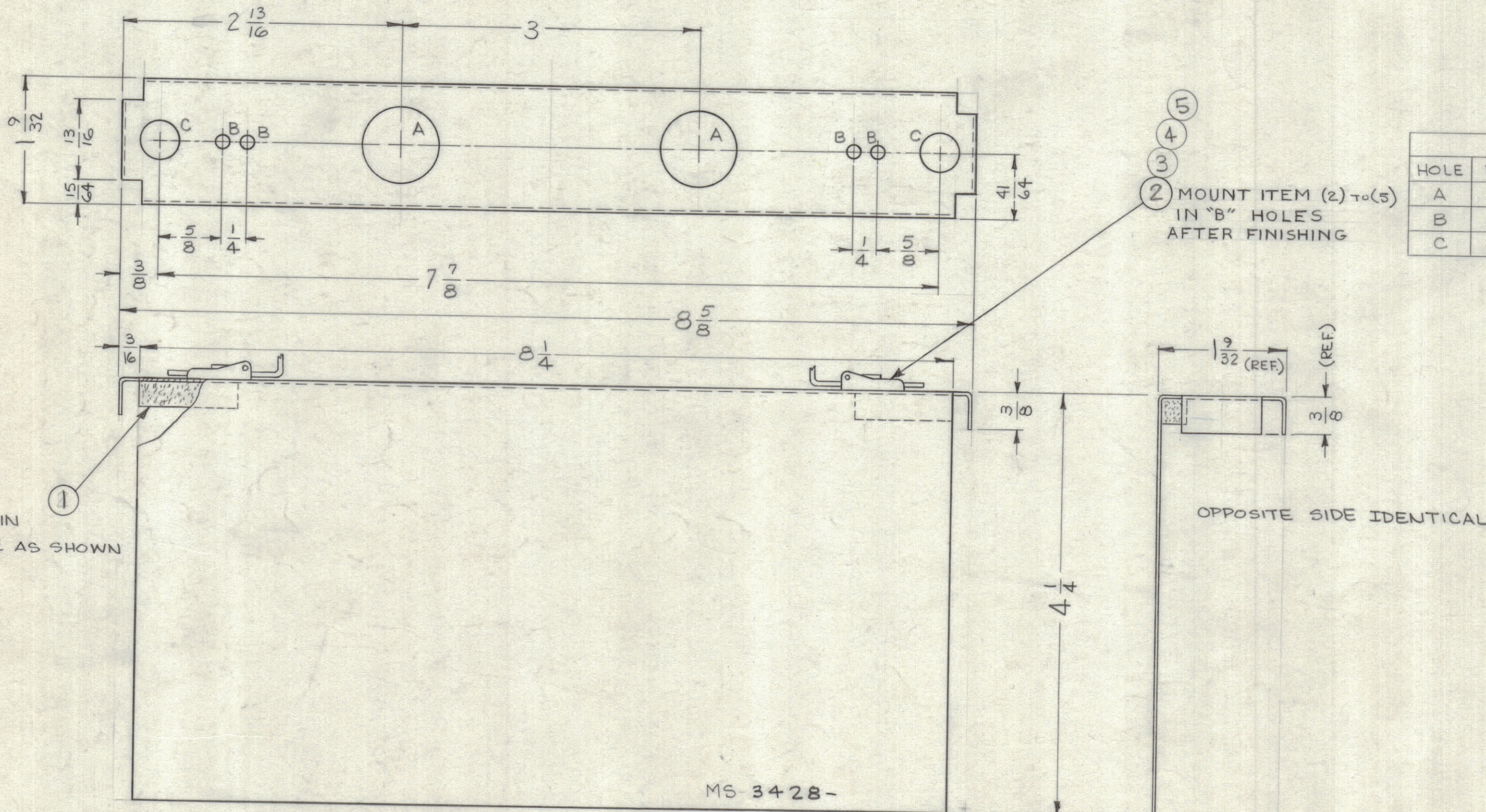


REVISIONS							
ZONE	SYM	DESCRIPTION	DATE	E.M.N. NO.	DRAFT	CHKD	APPD
	X1	DWG TITLE WAS COVER-MTG FRAME (AF MODULE)	4/9/64	1	JL		
	O	ORIGINAL RELEASE FOR PRODUCTION	5/12/64	0	A.M.	@	
B2	A	ITEM 1 WAS TA III-2-2-1-G	8.4.64	11216	WJB	@	W
	B	LD1347-2 \$ MODEL REF. ADDED	2-2-64	15603	SRG	WJB	



LEGEND		
HOLE	DESCRIPTION	REQ
A	3/4 DIA.	2
B	.128 DIA.	4
C	3/8 DIA.	2

② MOUNT ITEM (2) TO (5) IN "B" HOLES AFTER FINISHING

① TAPE IN PLACE AS SHOWN

MS 3428-

METAL STAMP TMC PART NO. 1/8 HIGH GOTHIC. WITH LATEST REVISION LETTER

REF: LD 1347 FOR VLRA-1  
LD1347-2 FOR VLRE-1

UNLESS OTHERWISE SPECIFIED:  
- USE MATERIAL THK. FOR MAX. RADIUS

- UNLESS OTHERWISE SPECIFIED:
1. USE MATERIAL THICKNESS FOR MAXIMUM RADIUS ON ALL BENDS.
  2. ALL ANGULAR BENDS 90°.
  3. REMOVE ALL BURRS AND SHARP EDGES.
  4. MOUNT INSERTS AFTER FINISHING.

NOTES

Q'TY./UNIT	MODEL USED ON	ASS'Y. NO.
1	VLRE-1	AX-598
1	VLRA-1	AX-431

THE CONTENTS OF THIS DRAWING ARE THE EXCLUSIVE PROPERTY OF THE TECHNICAL MATERIEL CORP. ITS UNAUTHORIZED USE OR REPRODUCTION IN WHOLE OR IN PART IS STRICTLY FORBIDDEN.

REQ'D.	ITEM	PART NUMBER	DESCRIPTION	SYMBOL
2	5	FS-119-3	LATCHGUIDE, SNAPSIDE FASTENER	B
2	4	FS-118-2	LATCH, SNAPSIDE FASTENER	B
2	3	WA-131-23	WASHER, SPRING.	B
2	2	FS-1120-2	POST, SNAPSIDE FASTENER	B
2	1	TA III-2-2-1.00G	TAPE, URETHANE	#

M. GELLMAN		LIST OF MATERIAL	
MATERIAL .032, ALUMINUM 5052-H32		THE TECHNICAL MATERIEL CORP. MAMARONECK, NEW YORK	
FINISH IRIDITE AS PER TMC SPEC S-404		TITLE COVERTOP-MOUNTING FRAME (AF MODULE)	
UNLESS OTHERWISE SPECIFIED DIMENSIONS ARE IN INCHES AND INCLUDE CHEMICALLY APPLIED OR PLATED FINISHES		DATE 4-9-63	FINAL APPROVAL DATE
TOLERANCES DECIMALS .X ± .05 .XX ± .01 .XXX ± .005		DATE 5-8-64	DATE
FRACTIONS ± 1/64 ANGLES ± 0° 30'		DATE	DATE
		MECH. DES. DATE	DATE
		DATE	DATE

MS-3428 B

MS-3428 B