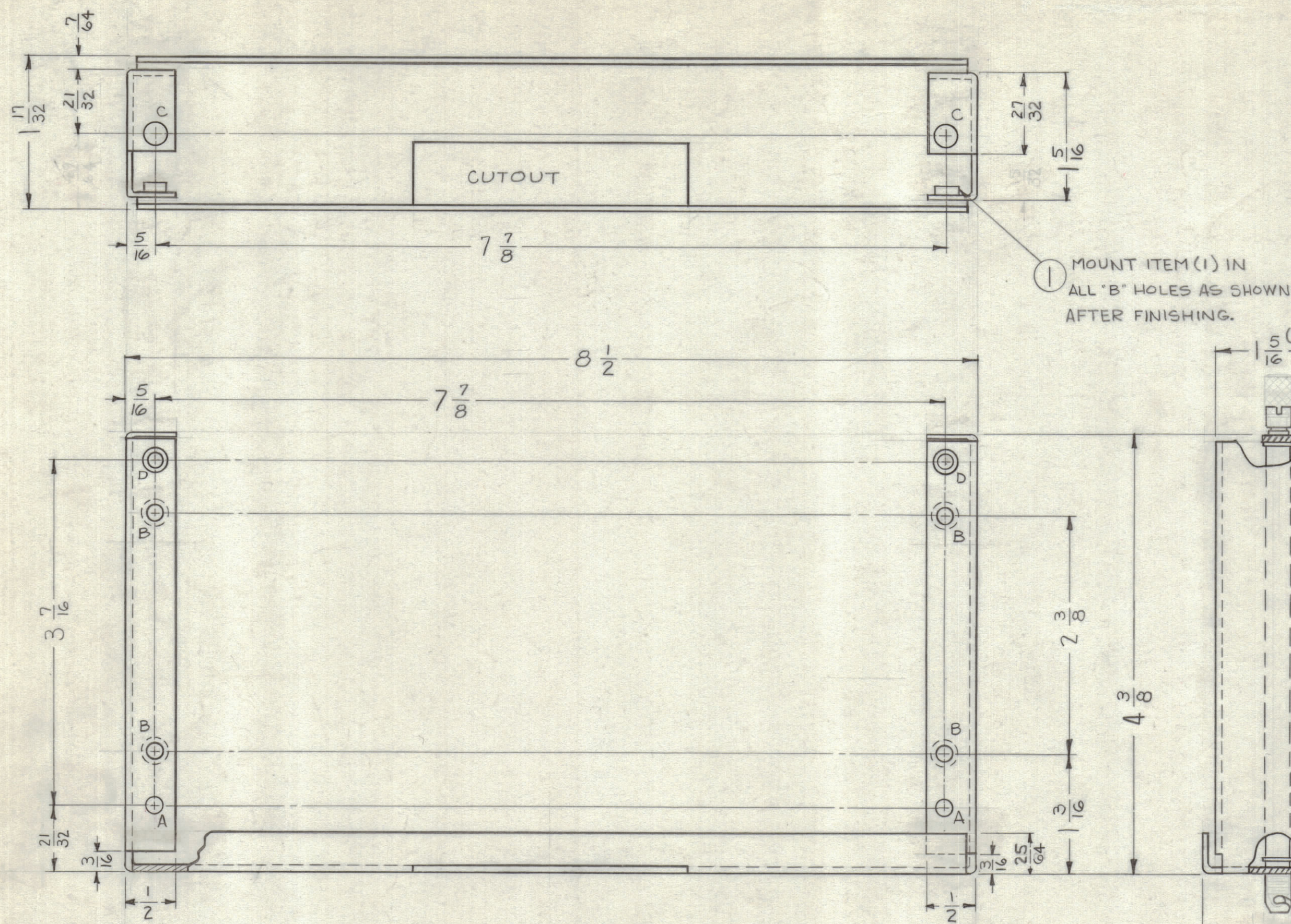


REVISIONS						
ZONE	SYM	DESCRIPTION	DATE	E.M.N. NO.	DRAFT	CHKD APPD
#	0	ORIGINAL RELEASE FOR PRODUCTION	5/12/64	0	A.M.	
B23	A	CLERICAL CHANGE	9/19/65		H.V.V.	

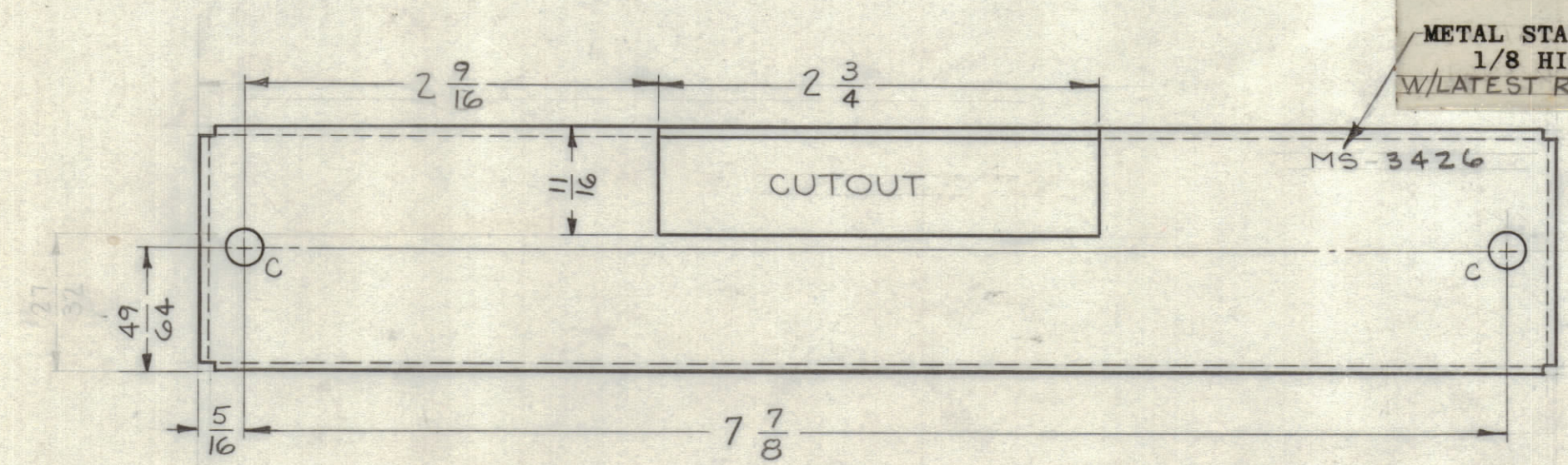


1 MOUNT ITEM (1) IN ALL "B" HOLES AS SHOWN AFTER FINISHING.

2 3 MOUNT ITEM (2) SECURED WITH ITEM (3) IN "C" HOLES AS SHOWN AFTER FINISHING.

LEGEND		
HOLE	DESCRIPTION	REQ.
A	.157 DIA.	2
B	.161 - .164 DIA.	4
C	9/32 DIA.	4
D	.140 DIA HOLE, CS'K 82° TO .230 D	2

METAL STAMP TMC PART NO. 1/8 HIGH GOTHIC. W/LATEST REVISION LETTER



LD1983 (VLR-1)
REF: LD-1351 (VLR-1)

REQ'D.	ITEM	PART NUMBER	DESCRIPTION	SYMBOL
4	3	WA-137-2	RING, RETAINING	C
2	2	FS-122-1	STUD, TURNLOCK FASTENER	C
4	1	NT-129-0440-4	NUT, ROUND, SWAGE TYPE	B

M. GELLMAN		LIST OF MATERIAL	
MATERIAL	.064 ALUMINUM 5052-H32	THE TECHNICAL MATERIEL CORP. MAMARONECK, NEW YORK	
FINISH	IRIDITE AS PER TMC SPEC. S-404	TITLE: FRAME, MOUNTING-PRINTED CIRCUIT (BFO MODULE)	
UNLESS OTHERWISE SPECIFIED DIMENSIONS ARE IN INCHES AND INCLUDE CHEMICALLY APPLIED OR PLATED FINISHES	DECIMALS: .X ± .05, .XX ± .01, .XXX ± .005	FRACTIONS: ± 1/64 ANGLES: ± 0° 30'	TOLERANCES: ± 1/64 ANGLES: ± 0° 30'
SCALE: 1:1	CODE: A	ASS'Y. NO.:	DATE: 4-5-63
THE CONTENTS OF THIS DRAWING ARE THE EXCLUSIVE PROPERTY OF THE TECHNICAL MATERIEL CORP. ITS UNAUTHORIZED USE OR REPRODUCTION IN WHOLE OR IN PART IS STRICTLY FORBIDDEN.		DATE: 5-8-64	DATE: MS-3426
NOTES		DATE: 5-8-64	DATE: MS-3426
UNLESS OTHERWISE SPECIFIED:		DATE: 5-8-64	DATE: MS-3426
1. USE MATERIAL THICKNESS FOR MAXIMUM RADIUS ON ALL BENDS.		DATE: 5-8-64	DATE: MS-3426
2. ALL ANGULAR BENDS 90°.		DATE: 5-8-64	DATE: MS-3426
3. REMOVE ALL BURRS AND SHARP EDGES.		DATE: 5-8-64	DATE: MS-3426
4. MOUNT INSERTS AFTER FINISHING.		DATE: 5-8-64	DATE: MS-3426

UNLESS OTHERWISE SPECIFIED:
 1. USE MATERIAL THICKNESS FOR MAXIMUM RADIUS ON ALL BENDS.
 2. ALL ANGULAR BENDS 90°.
 3. REMOVE ALL BURRS AND SHARP EDGES.
 4. MOUNT INSERTS AFTER FINISHING.

NOTES

1	VLR-1	AX-597
1	VLR-1	AX-424
QTY./UNIT	MODEL USED ON	ASS'Y. NO.
SCALE	CODE	

THE CONTENTS OF THIS DRAWING ARE THE EXCLUSIVE PROPERTY OF THE TECHNICAL MATERIEL CORP. ITS UNAUTHORIZED USE OR REPRODUCTION IN WHOLE OR IN PART IS STRICTLY FORBIDDEN.

MS-3426
A