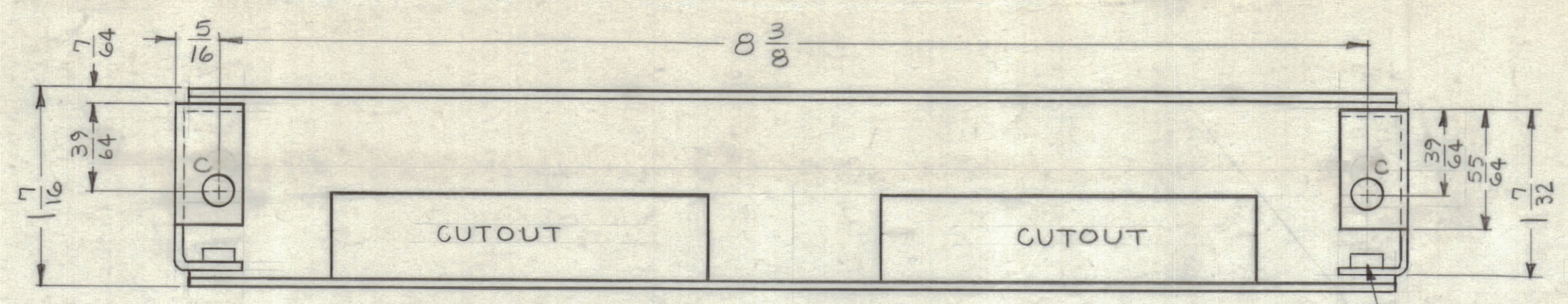
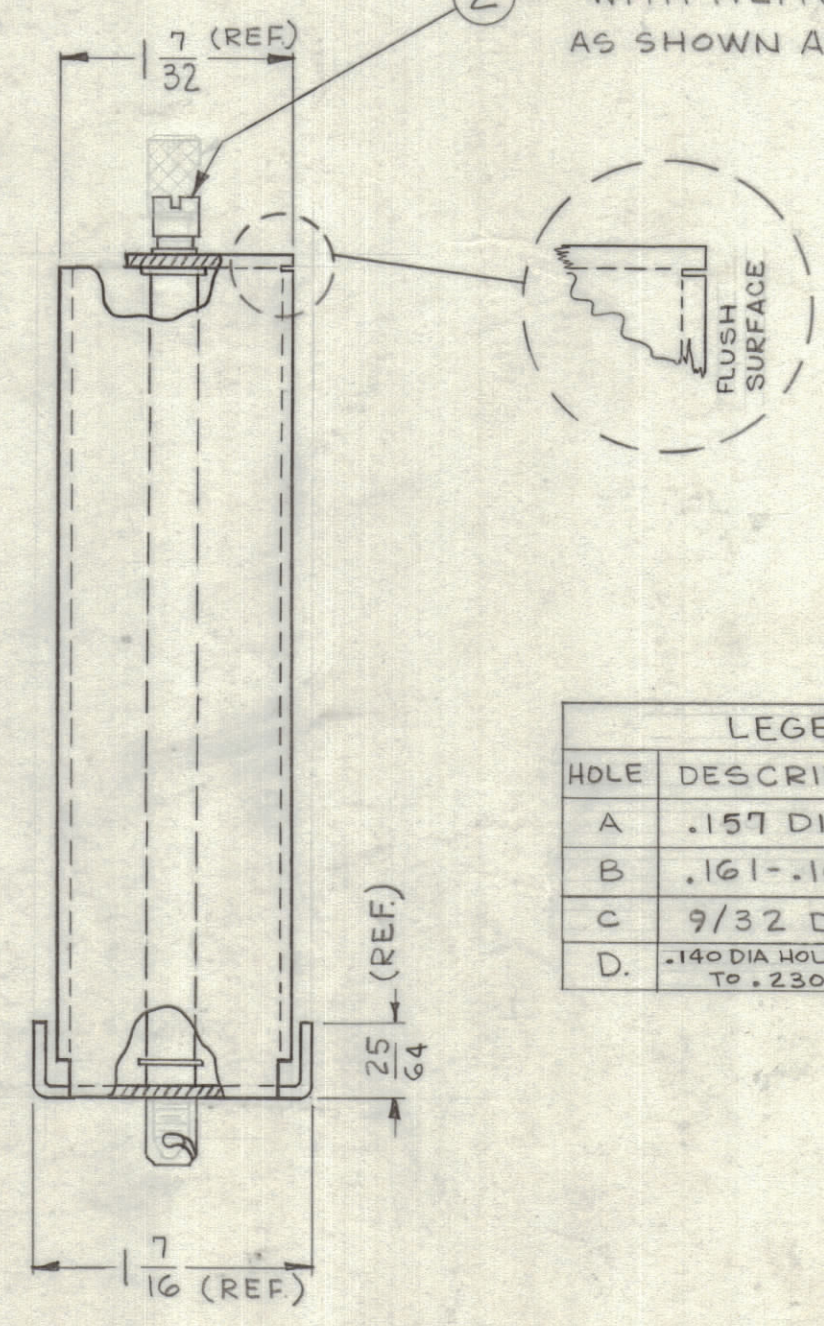
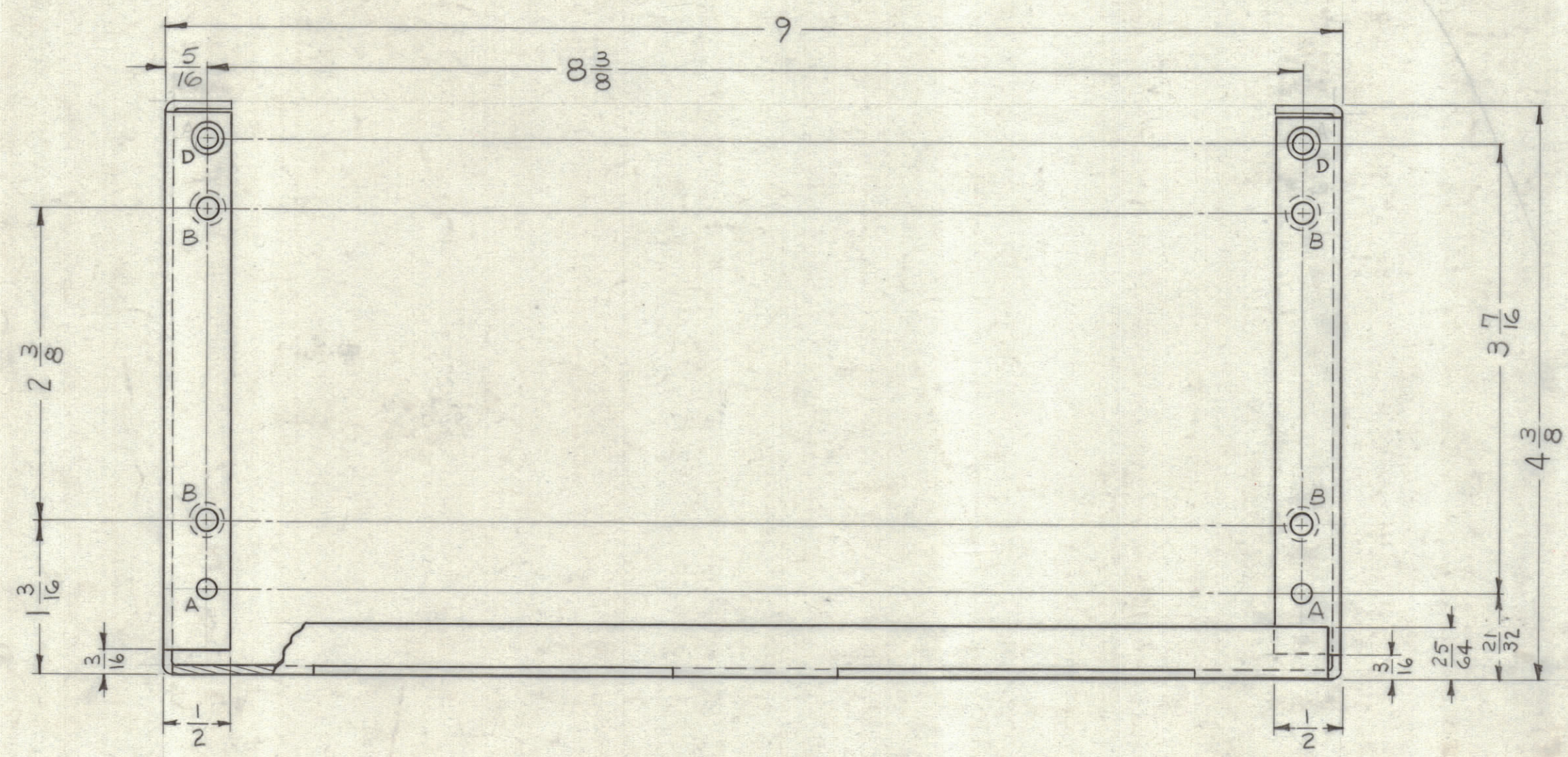


REVISIONS						
ZONE	SYM	DESCRIPTION	DATE	E.M.N. NO.	DRAFT	CHKD APPD
-#	0	ORIGINAL RELEASE FOR PRODUCTION	5/12/64	0	A.M.	
B,2,3	A	CLERICAL CHANGE	8/18/65		H.V.V.	

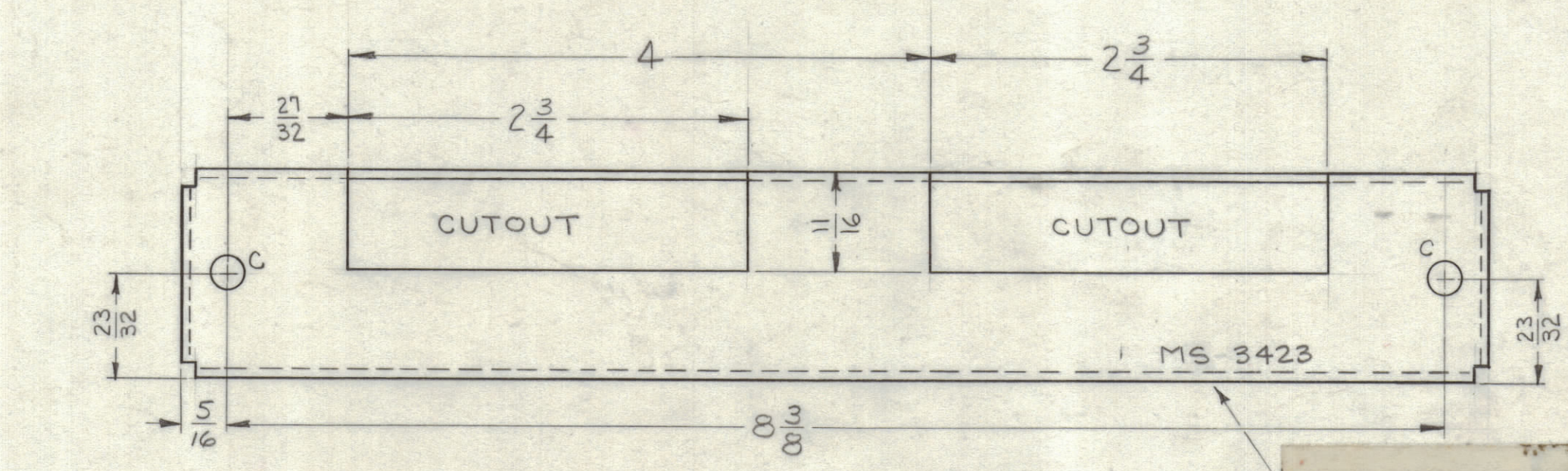


1 MOUNT ITEM (1) IN ALL "B" HOLES AS SHOWN AFTER FINISHING.

2 3 MOUNT ITEM (2) SECURED WITH ITEM (3) IN "C" HOLES AS SHOWN AFTER FINISHING.



LEGEND		
HOLE	DESCRIPTION	REQ.
A	.157 DIA.	2
B	.161-.164 DIA	4
C	9/32 DIA.	4
D	.140 DIA HOLE, CS'K B2° To .230 DIA	2



METAL STAMP TMC PART NO. 1/8 HIGH GOTHIC. W/LATEST REVISION LETTER

LD1982 (VLRE-1)  
REF: LD-1350 (VLRA-1)

REQ'D.	ITEM	PART NUMBER	DESCRIPTION	SYMBOL
4	3	WA-137-2	RING, RETAINING	C
2	2	FS-122-1	STUD, TURNLOCK FASTENER	C
4	1	NT-129-0440-4	NUT, ROUND, SWAGE TYPE	B

M. GELLMAN LIST OF MATERIAL			
MATERIAL		THE TECHNICAL MATERIEL CORP.	
.064, ALUMINUM 5052-H32		MAMARONECK, NEW YORK	
FINISH		TITLE	
IRIDITE AS PER TMC SPEC. S-404		FRAME, MOUNTING-PRINTED CIRCUIT (IF MODULE)	
QTY./UNIT	MODEL USED ON	ASS'Y. NO.	DATE
1	VLRE-1	AX-596	4-9-63
1	VLRA-1	AX-425	5-14-64
SCALE	CODE		
1:1	A		
DECIMALS		FRACTIONS	
.X ± .05		± 1/64	
.XX ± .01		ANGLES	
.XXX ± .005		± 0° 30'	
TOLERANCES			
DRAWN		DATE	
G. Jensen		4-9-63	
CHECKED		DATE	
		5-14-64	
ELECT. DES.		DATE	
MECH. DES.		DATE	
SHEET		REV. LTR.	
MS 3423		4	

- UNLESS OTHERWISE SPECIFIED:
1. USE MATERIAL THICKNESS FOR MAXIMUM RADIUS ON ALL BENDS.
  2. ALL ANGULAR BENDS 90°.
  3. REMOVE ALL BURRS AND SHARP EDGES.
  4. MOUNT INSERTS AFTER FINISHING.

NOTES

THE CONTENTS OF THIS DRAWING ARE THE EXCLUSIVE PROPERTY OF THE TECHNICAL MATERIEL CORP. ITS UNAUTHORIZED USE OR REPRODUCTION IN WHOLE OR IN PART IS STRICTLY FORBIDDEN.

MS 3423 A