

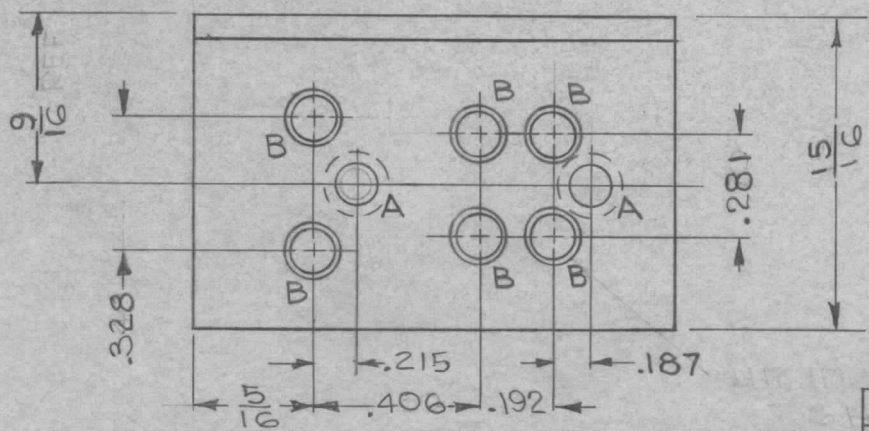
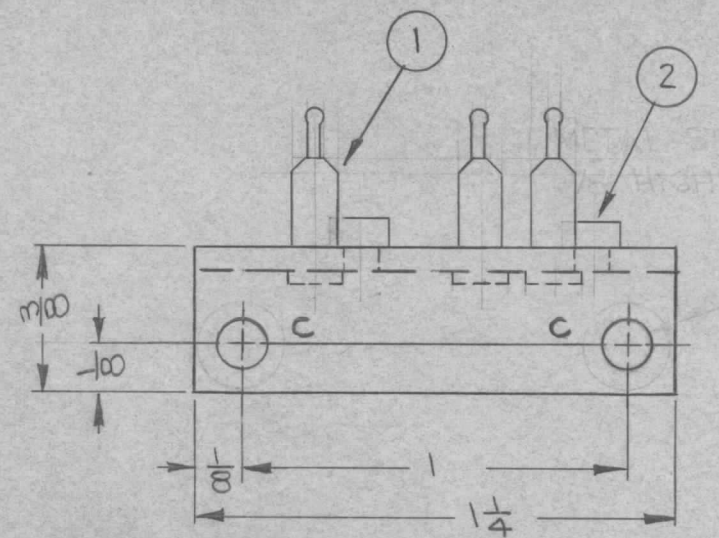
THE CONTENTS OF THIS DRAWING ARE THE EXCLUSIVE PROPERTY OF THE TECHNICAL MATERIEL CORP. ITS UNAUTHORIZED USE FOR REPRODUCTION IN WHOLE OR IN PART IS STRICTLY FORBIDDEN.

REQ. PER UNIT	USED ON			MS-3414	A
	MODEL	ASS'Y. NO.	DATE		
	1 TTRR		6-11-63		
1 TTRT		6-11-63			

HOLE LEGEND
A

HOLE	DESCRIPTION	REQ'D
A	.161-.164 DIA	2
B	.110 DIA, CSK 60° X .120 DIA.	6
C	.120 DIA.	2

NOTE:
1. MOUNT ITEM 1 & 2 AS SHOWN AFTER FINISHING.



METAL STAMP TMC PART No. (MS-3414) 1/8 HIGH GOTHIC, THIS SURFACE, WITH LATEST REVISION LETTER

REF: LD-1342

2	2	NT-129-440-4	NUT, SWAGE	A
6	1	JJ-219-18-9	JACK, TIP, SUB-MINIATURE	XY1AB XY2AB

A	STOCK SIZE WAS .064 B-HOLE WAS .116 DIA. C-HOLE, C-SINK DELETED 9/16 WAS 7/16, 15/16 WAS 13/16	6.4.64	11493	hb	@	TKW
SYM	DESCRIPTION	DATE	CH. NO.	DRAFTS	CHECKER	ENG. APP.
UNLESS OTHERWISE SPECIFIED DIMENSIONS ARE IN INCHES AND INCLUDE CHEMICALLY APPLIED OR PLATED FINISHES		SCALE NOT TO SCALE				
DECIMALS .X ± .05 .XX ± .01 .XXX ± .005	TOLERANCES	FRACTIONS ± 1/64 ANGLES ± 0° 30'	CODE A			

REQ. ITEM	PART NO.	JORDAN DESCRIPTION	E-3037-221	SYMBOL
.081		THE TECHNICAL MATERIEL CORP. MAMARONECK, NEW YORK		
ALUMINUM		BRACKET, CRYSTAL SOCKET		
5052	H-32	WALPATER	6-11-63	BP
S404-YELLOW IRIDITE		MS-3414 A		
FINISH & SPEC. NO.		ELEC. DES. APP.	MECH. DES. APP.	