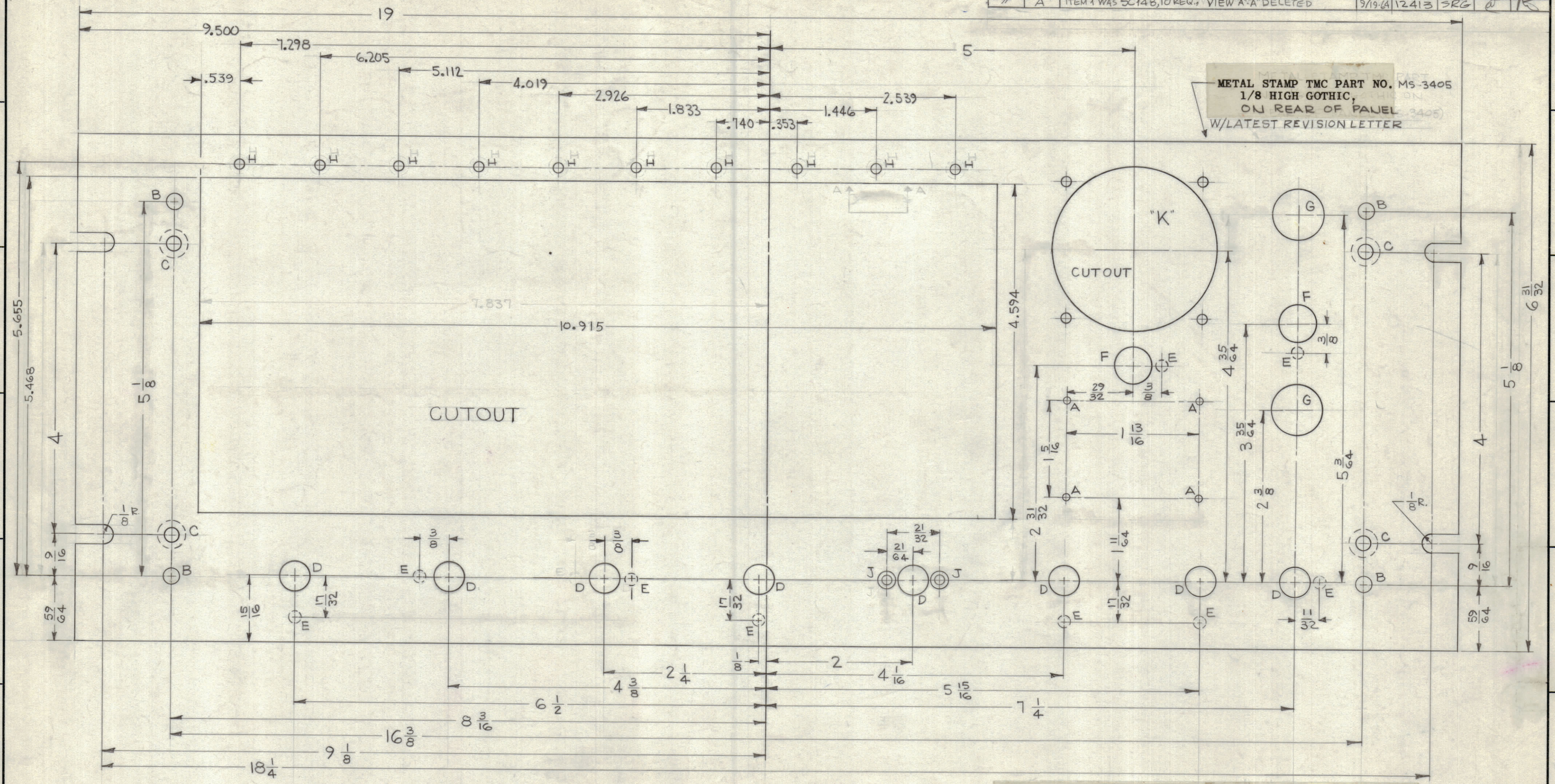
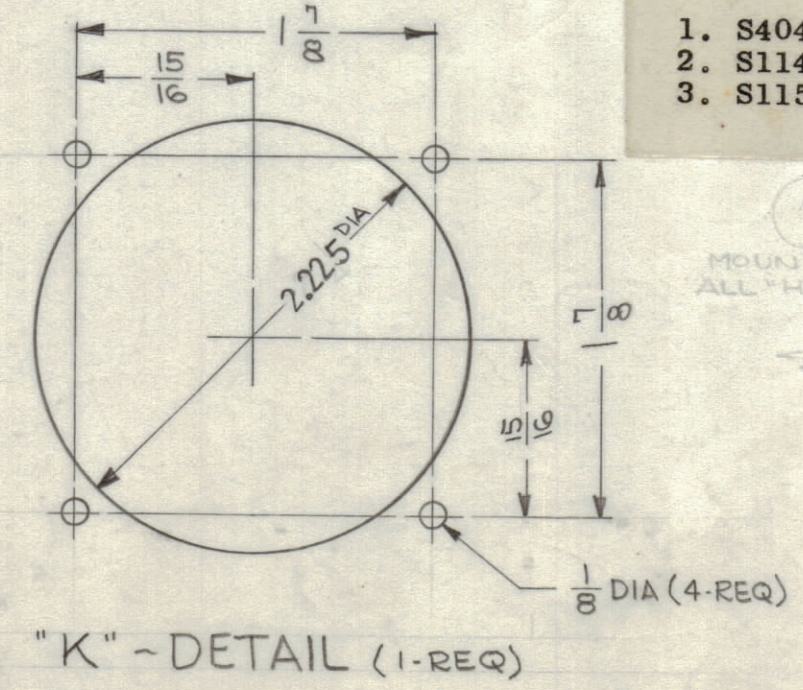


REVISIONS							
ZONE	SYM	DESCRIPTION	DATE	E.M.N. NO.	DRAFT	CHKD	APPD
#		ORIGINAL RELEASE FOR PRODUCTION	5/12/64	0	A.M.		
#	A	ITEM 1 WAS SC148, 10 REQ. VIEW "A-A" DELETED	9/19/64	12413	SRG		



METAL STAMP TMC PART NO. MS-3405
 1/8 HIGH GOTHIC,
 ON REAR OF PANEL (3405)
 W/LATEST REVISION LETTER

HOLE LEGEND		
HOLE	DESCRIPTION	REQ
A	.076 DIA.	4
B	.196 DIA.	4
C	.196 DIA HOLE, C'SINK 82° TO .230 DIA. ON REAR OF PANEL	4
D	.406 DIA.	8
E	.156 DIA., 3/32 DP. ON REAR OF PANEL	9
F	.484 DIA.	2
G	.687 DIA.	2
H	.116 DIA	10
J	.120 DIA HOLE, C'SINK 82° TO .230 DIA.	2
K	SEE DETAIL	1



FINISH NOTES:

- S404 - IRIDITE 14-2 AL-COAT.
- S114 - ZINC CHROMATE PRIMER) FRONT AND
- S115 - SMOOTH GRAY ENAMEL) EDGES ONLY

MACHINING:

- MILL ALL EDGES.
- HOLES MUST BE DRILLED, UNLESS OTHERWISE SPECIFIED.
- LATERAL BOW OF PANEL MUST BE KEPT TO .031 TOLERANCE.
- PANEL MUST BE FREE OF ALL MACHINING MARKS, GOUGES AND SCRATCHES. IF NECESSARY, SAND FRONT OF PANEL WITH NO. 120 GRIT SANDPAPER.

3-HOLES MUST BE DRILLED.
 4-PANEL MUST BE FREE OF ALL MACHINING MARKS, GOUGES & SCRATCHES. SAND FRONT OF PANEL WITH NO. 120 SANDPAPER.

VIEW "A-A"

REF: LD-1335

REQ'D.	ITEM	PART NUMBER	DESCRIPTION	SYMBOL
		SC-148	STUD. THREADED	H
M. GELLMAN LIST OF MATERIAL				
MATERIAL			THE TECHNICAL MATERIEL CORP. MAMARONECK, NEW YORK	
3/16 ALUMINUM 2024-T3			TITLE FRONT PANEL, FRONTING	
FINISH			DRAWN	
SEE FINISH NOTES			DATE 6-6-63	
			CHECKED	
			DATE 5-8-64	
			ELECT. DES.	
			DATE	
			MECH. DES.	
			DATE 5-7-64	
			SHEET	
			MS 3405	
			REV. LTR.	
			A	

VLR-1		
QTY./UNIT	MODEL USED ON	ASS'Y. NO.
SCALE	CODE	
1:1	A	
THE CONTENTS OF THIS DRAWING ARE THE EXCLUSIVE PROPERTY OF THE TECHNICAL MATERIEL CORP. ITS UNAUTHORIZED USE OR REPRODUCTION IN WHOLE OR IN PART IS STRICTLY FORBIDDEN.		
DECIMALS	FRACTIONS	TOLERANCES
.X ± .05 .XX ± .01 .XXX ± .005	± 1/64 ANGLES ± 0° 30'	