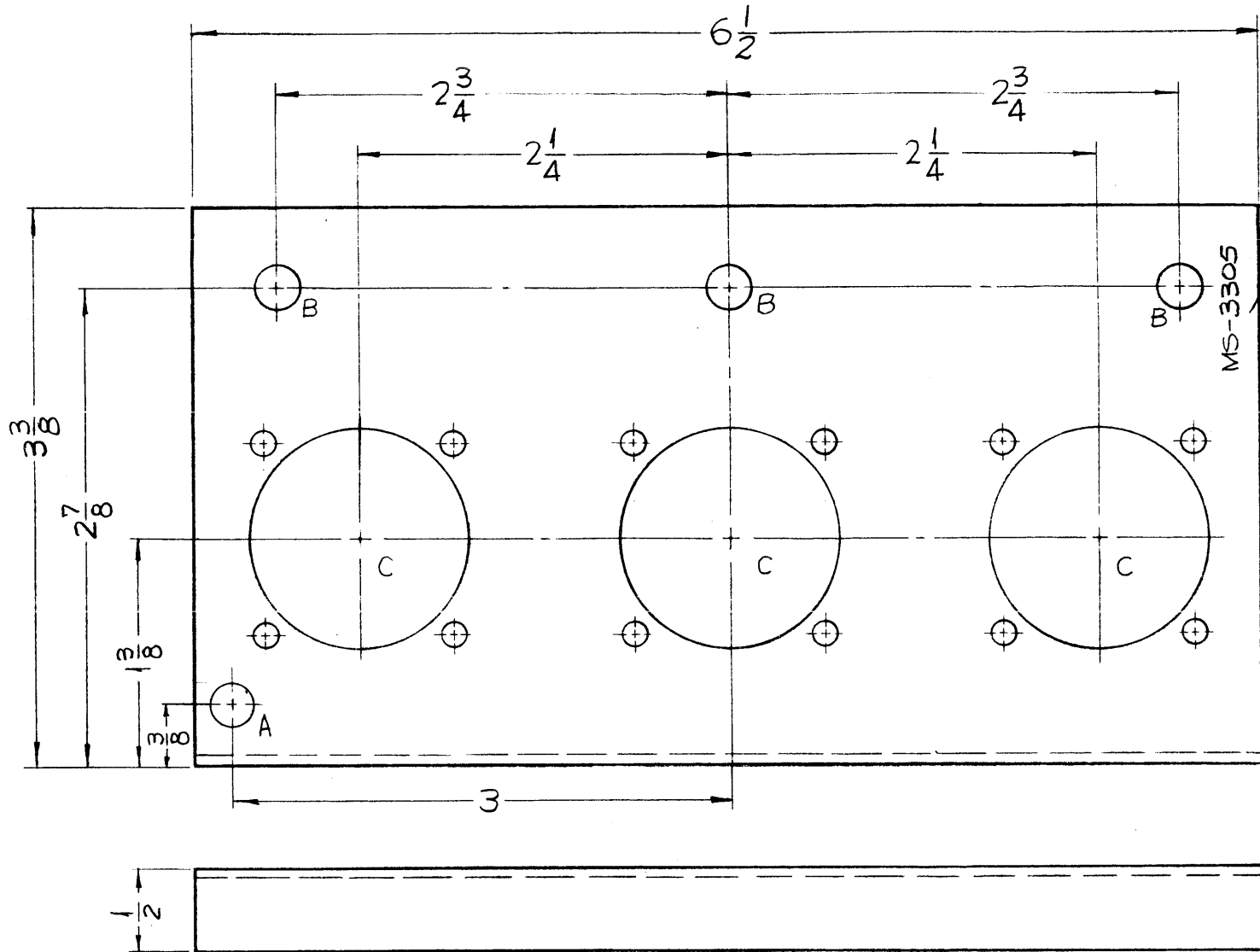


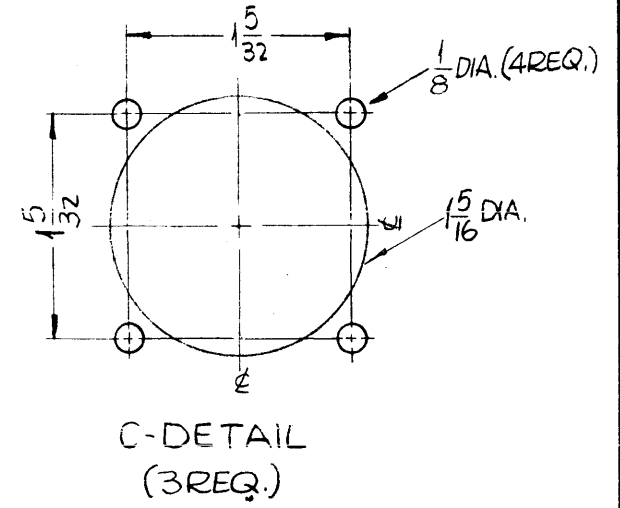
MS-3305 0

THE CONTENTS OF THIS DRAWING ARE THE EXCLUSIVE PROPERTY OF THE TECHNICAL MATERIEL CORP. ITS UNAUTHORIZED USE OR REPRODUCTION IN WHOLE OR IN PART IS STRICTLY FORBIDDEN.

METAL STAMP TMC PART NO. 1/8 HIGH GOTHIC. WITH LATEST REVISION LETTER



HOLES:
 A ~ 15/64 DIA. — 1 REQ.
 B ~ 1/4 DIA. — 3 REQ.



- UNLESS OTHERWISE SPECIFIED:
1. USE MATERIAL THICKNESS FOR MAXIMUM RADIUS ON ALL BENDS.
 2. ALL ANGULAR BENDS 90°.
 3. REMOVE ALL BURRS AND SHARP EDGES.

REF. LD-1271

ORIGINAL RELEASE FOR PRODUCT 5/28/64 0 A.M.		REQ. PER UNIT 1		GPT-200K		AX-392		7-15-63		F. BUDETTI		THE TECHNICAL MATERIEL CORP. MAMARONECK, NEW YORK		SYMBOL	
SYM DESCRIPTION		DATE CH. NO. DRAFTS CHECKER ENG. APP.		MODEL SECTION		ASS'Y. NO.		DATE		TYPE & TEMPER HEAT TREAT. SPEC.		DRAWN CHECKED		FINAL APPROVAL	
UNLESS OTHERWISE SPECIFIED: DIMENSIONS ARE IN INCHES TOLERANCES ON FRACTIONS ± 1/64 DECIMALS ± .005 ANGLES ± 1/2°		SCALE: 1" = 1"		MAXIMUM ALLOWABLE TOLERANCES HAVE BEEN DETERMINED AND ANY DEVIATIONS WILL BE CAUSE FOR REJECTION. REMOVE ALL BURRS AND SHARP EDGES		USED ON		COPPER FLASH		SRG		RR		MS-3305 0	
ORIGINAL RELEASE FOR PRODUCT		DATE CH. NO. DRAFTS CHECKER ENG. APP.		MODEL SECTION		ASS'Y. NO.		DATE		TYPE & TEMPER HEAT TREAT. SPEC.		DRAWN CHECKED		FINAL APPROVAL	
ORIGINAL RELEASE FOR PRODUCT		DATE CH. NO. DRAFTS CHECKER ENG. APP.		MODEL SECTION		ASS'Y. NO.		DATE		TYPE & TEMPER HEAT TREAT. SPEC.		DRAWN CHECKED		FINAL APPROVAL	

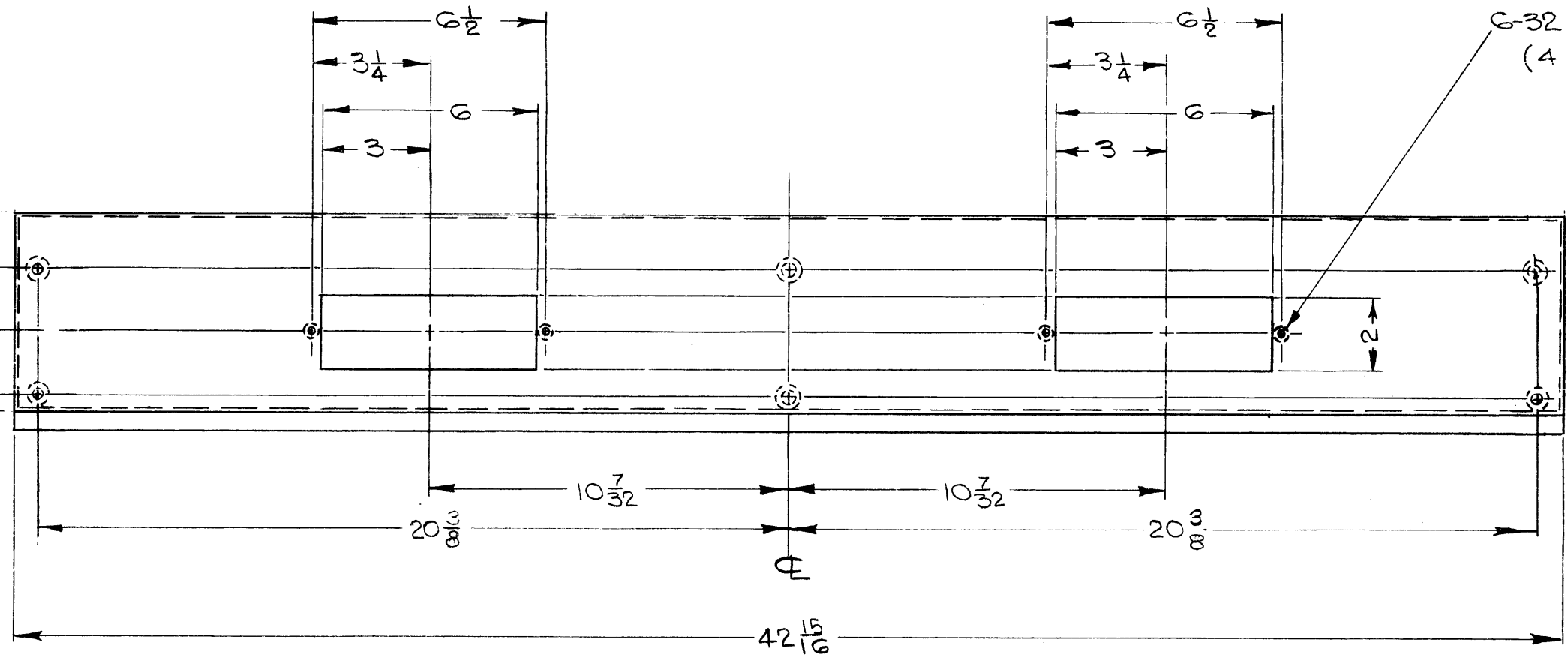
MS-3316

THE CONTENTS OF THIS DRAWING ARE THE EXCLUSIVE PROPERTY OF THE TECHNICAL MATERIEL CORP. ITS UNAUTHORIZED USE OR REPRODUCTION IN WHOLE OR IN PART IS STRICTLY FORBIDDEN.

10-32 PEM-NUT ON REAR (6 REQ)

6-32 PEM-NUT (4 REQ)

METAL STAMP TMC PART NO. (MS-3316) 1/8" HIGH GOTHIC, W/LATEST REV. LETTER ON REAR OF PANEL.



UNLESS OTHERWISE SPECIFIED:

- 1. USE MATERIAL THICKNESS FOR MAXIMUM RADIUS ON ALL BENDS.
- 2. ALL ANGULAR BENDS 90°.
- 3. REMOVE ALL BURRS AND SHARP EDGES.

Ø	ORIGINAL RELEASE FOR PRODUCTION	6-9-65	AA	JC		
X ₁	DIM 20 3/8 WAS 20 1/2	12-30-64	X ₁	SR6		
SYM	DESCRIPTION	DATE	CH. NO.	DRAFTS	CHECKER	ENG. APP.

UNLESS OTHERWISE SPECIFIED:
 DIMENSIONS ARE IN INCHES
 TOLERANCES ON FRACTIONS ± 1/64 DECIMALS ± .005 ANGLES ± 1/2°

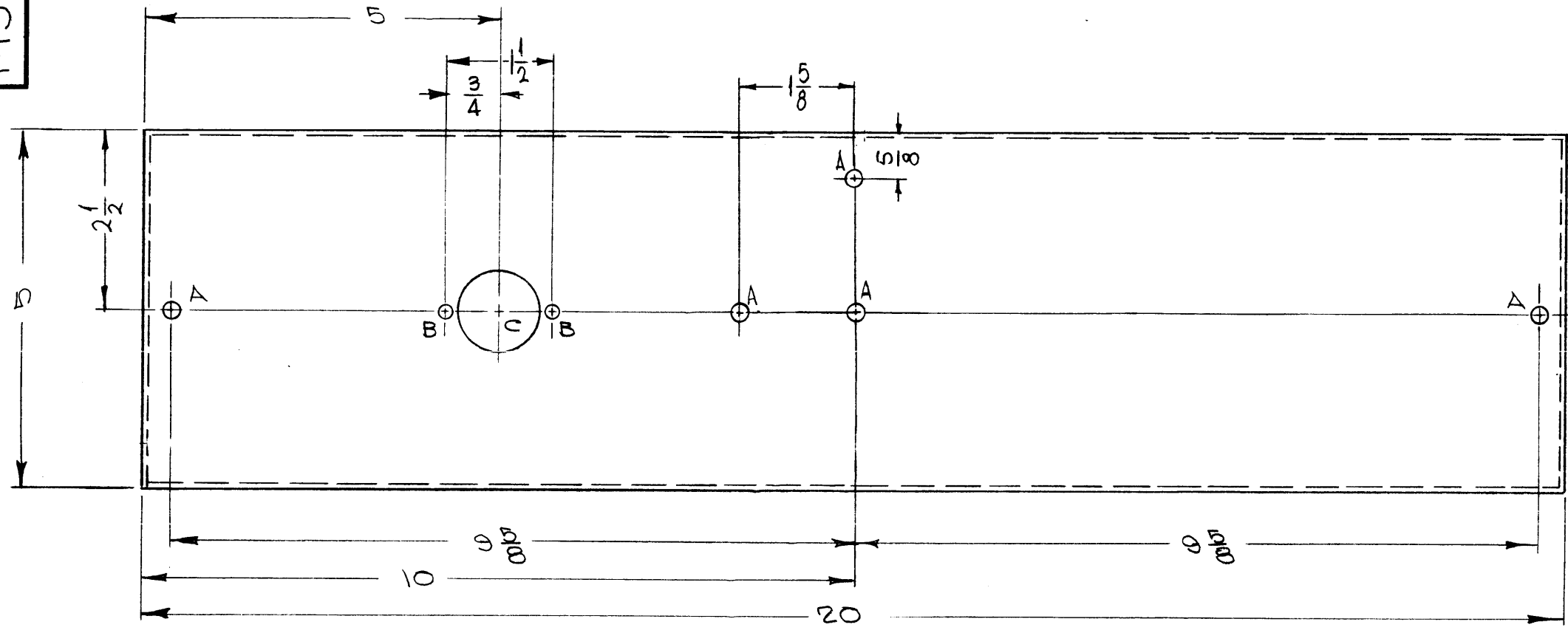
SCALE: 1:4
 MAXIMUM ALLOWABLE TOLERANCES HAVE BEEN DETERMINED AND ANY DEVIATIONS WILL BE CAUSE FOR REJECTION. REMOVE ALL BURRS AND SHARP EDGES

1	TER-25K-600B			7-31-63
REQ. PER UNIT	MODEL	SECTION	ASS'Y. NO.	DATE
USED ON				

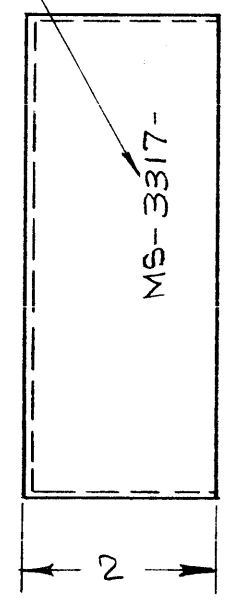
REQ.	ITEM	PART NO.	DESCRIPTION	SYMBOL	
	18 GA		THE TECHNICAL MATERIEL CORP. MAMARONECK, NEW YORK		
	STEEL			PANEL, FRONT	
MATERIAL					
			<i>[Signature]</i>	<i>[Signature]</i>	
TYPE & TEMPER		HEAT TREAT. SPEC.	DRAWN	CHECKED	FINAL APPROVAL
S520 BLUE GREY				<i>[Signature]</i>	<i>[Signature]</i>
FINISH & SPEC. NO.			ELEC. DES. APP.	MECH. DES. APP.	MS-3316

MS-3317

THE CONTENTS OF THIS DRAWING ARE THE EXCLUSIVE PROPERTY OF THE TECHNICAL MATERIEL CORP. ITS UNAUTHORIZED USE OR REPRODUCTION IN WHOLE OR IN PART IS STRICTLY FORBIDDEN.



METAL STAMP TMC PART NO. 1/8 HIGH GOTHIC. W/LATEST REV. LETTER.



HOLE

- A - 15/64 DIA - 5 REQ
- B - 11/64 DIA - 2 REQ
- C - 1/8 DIA - 1 REQ

UNLESS OTHERWISE SPECIFIED:

1. USE MATERIAL THICKNESS FOR MAXIMUM RADIUS ON ALL BENDS.
2. ALL ANGULAR BENDS 90°.
3. REMOVE ALL BURRS AND SHARP EDGES.

Ø	ORIGINAL RELEASE FOR PRODUCTION	6-9-65	AA	JC		
X ₁	(2) 3/4 DIA HOLES DELETED, 2 A HOLES ADDED	1-4-64	X ₁	SRG		
SYM	DESCRIPTION	DATE	CH. NO.	DRAFTS	CHECKER	ENG. APP.
UNLESS OTHERWISE SPECIFIED:		SCALE: 1:2				
DIMENSIONS ARE IN INCHES		MAXIMUM ALLOWABLE TOLERANCES HAVE BEEN DETERMINED AND ANY DEVIATIONS WILL BE CAUSE FOR REJECTION. REMOVE ALL BURRS AND SHARP EDGES				
TOLERANCES ON						
FRACTIONS ± 1/64		DECIMALS ± .05		ANGLES ± 1/2°		

REQ. PER UNIT	MODEL	SECTION	ASS'Y. NO.	DATE
1	TER-25K-60DB			
USED ON				

LD-1722

REQ. ITEM	PART NO.	F. BUDETTI	DESCRIPTION	SYMBOL
	18 GA	THE TECHNICAL MATERIEL CORP.		
	STOCK SIZE	MAMARONECK, NEW YORK		
	STEEL	CHASSIS COMPONENT MOUNTING		
	MATERIAL			
		8-2-65	JS.	OSB 11/9/65
TYPE & TEMPER	HEAT TREAT. SPEC.	DRAWN	CHECKED	FINAL APPROVAL
COPPER FLASH				
FINISH & SPEC. NO.	ELEC. DES. APP.	MECH. DES. APP.		MS-3317

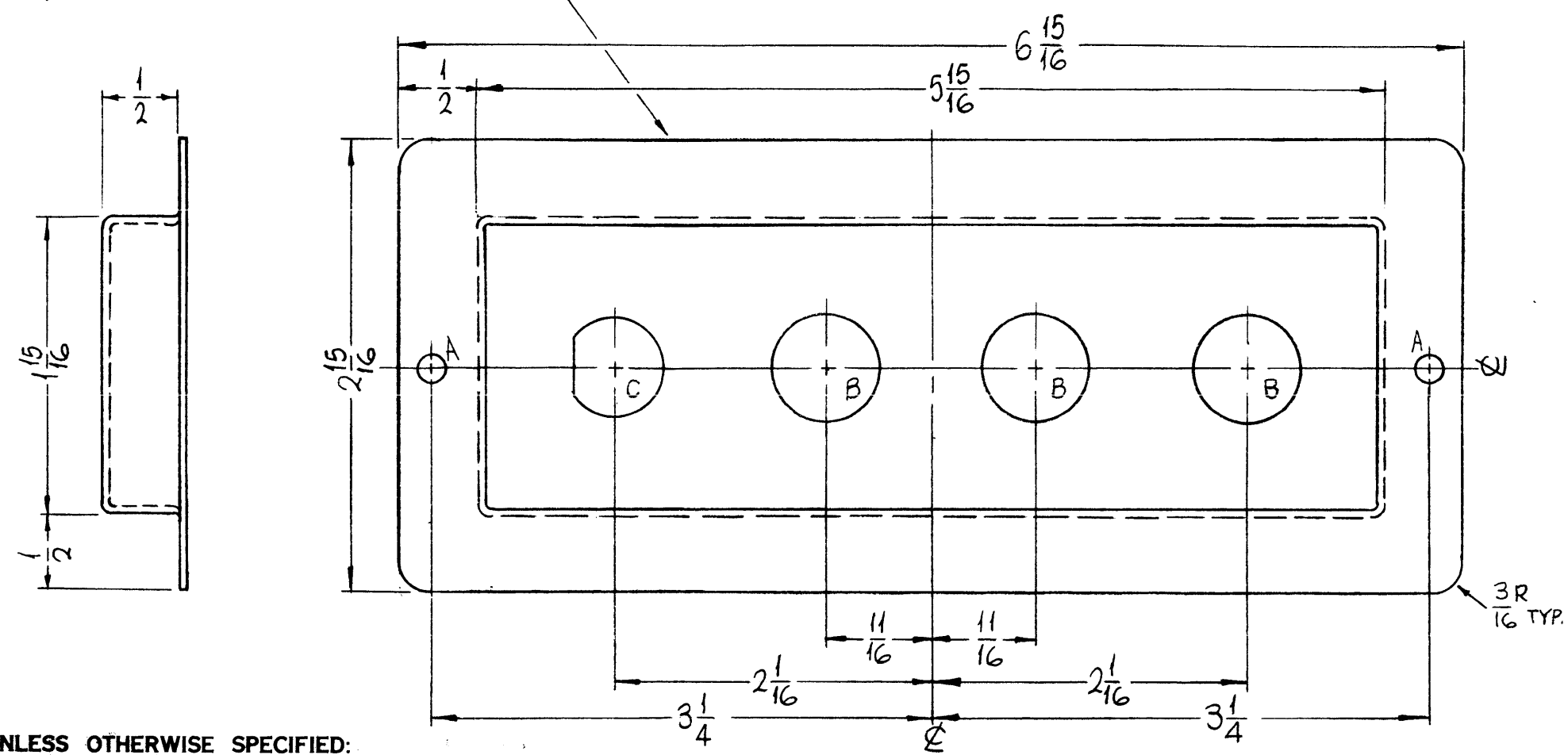
MS 3320

REVISIONS

SYM	DESCRIPTION	DATE	E.M.N. NO.	DRAFT	CHKD	APPD
X	EXP. RELEASE	12-29-64	X	SRG		QRB
Ø	ORIGINAL RELEASE FOR PRODUCTION	4-22-65	Ø	SR		

METAL STAMP TMC PART NO. (MS3320)
 1/8 HIGH GOTHIC W/LATEST
 REV. LETTER. (ON REAR)

HOLES	DESCRIPTION	REQ.
A	11/64 DIA.	2
B	11/16 DIA.	3
C	SEE DETAIL	1



UNLESS OTHERWISE SPECIFIED:

- USE MATERIAL THICKNESS FOR MAXIMUM RADIUS ON ALL BENDS
- ALL ANGULAR BENDS 90 DEGREES.
- REMOVE ALL BURRS AND SHARP EDGES

FINISH NOTES:

- S404 - IRIDITE 14-2 AL-COAT.
- S114 - ZINC CHROMATE PRIMER) FRONT AND
- S220 - RCAF GREY SEMI-GLOSS ENAM.) EDGES ONLY

FRONT VIEW

REF. LD 1275

REQ'D.	ITEM	PART NUMBER	DESCRIPTION	SYMBOL
F. BUDETTI LIST OF MATERIAL				
MATERIAL .051 THICK ALUMINUM 5052-H32			THE TECHNICAL MATERIEL CORP. MAMARONECK, NEW YORK	
FINISH SEE NOTES			TITLE PANEL, FRONT, FUSE HOLDER	
UNLESS OTHERWISE SPECIFIED DIMENSIONS ARE IN INCHES AND INCLUDE CHEMICALLY APPLIED OR PLATED FINISHES			DRAWN SRG	DATE 12-29-64
DECIMALS .X ± .05 .XX ± .01 .XXX ± .005			CHECKED QRB	DATE 4/15/65
FRACTIONS ± 1/64 ANGLES ± 0° 30'			ELECT. DES. SR	DATE
TOLERANCES			MECH. DES. SR	DATE
THE CONTENTS OF THIS DRAWING ARE THE EXCLUSIVE PROPERTY OF THE TECHNICAL MATERIEL CORP. ITS UNAUTHORIZED USE OR REPRODUCTION IN WHOLE OR IN PART IS STRICTLY FORBIDDEN.			FINAL APPROVAL QRB MS3320	
			DATE 6/9/67	
			REV. LTR. Ø	
			SHEET	

NOTES

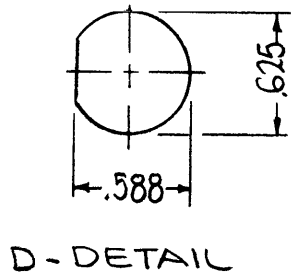
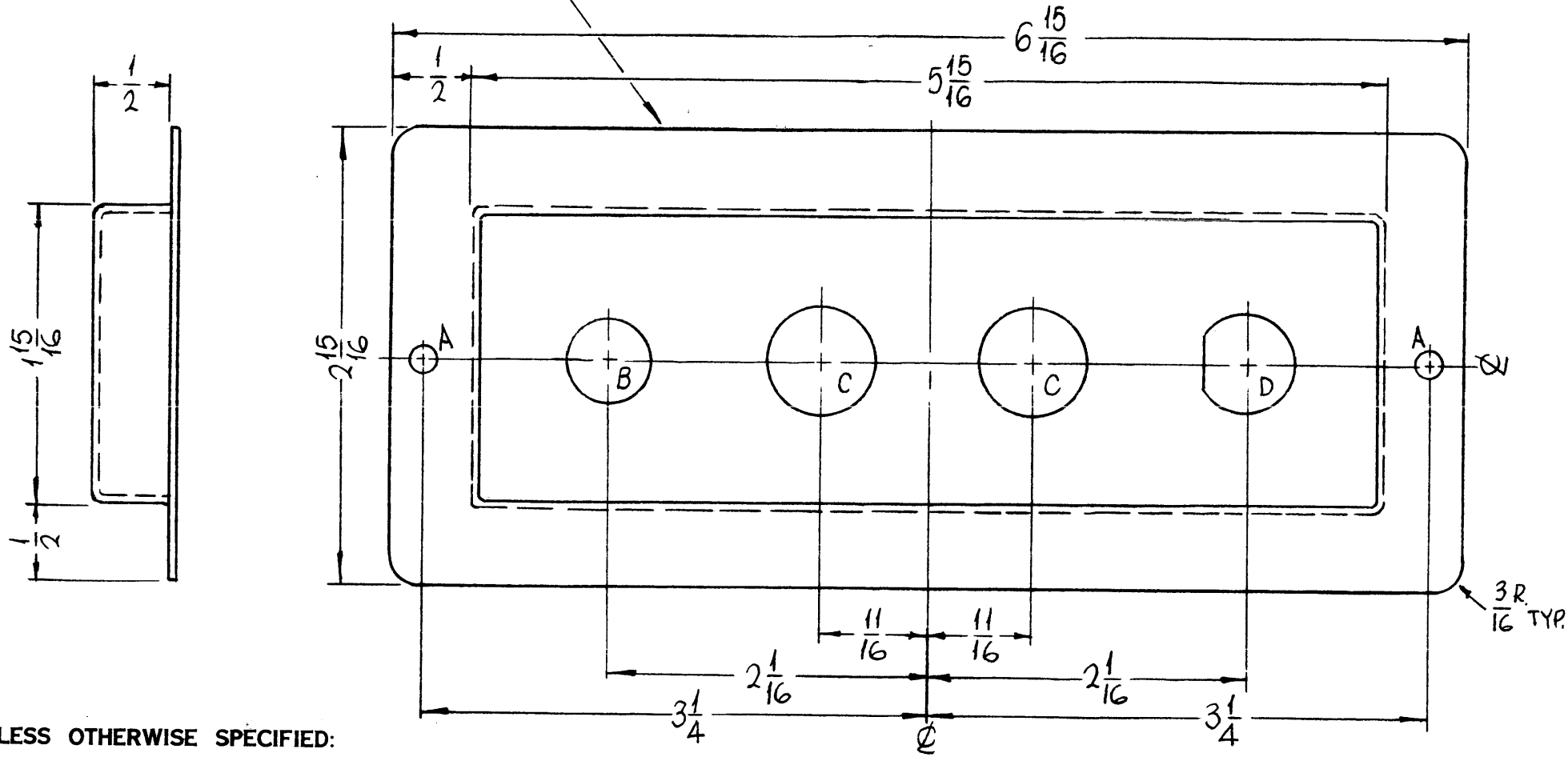
Q'TY./UNIT	MODEL USED ON	ASS'Y. NO.
1	TER -25K	
SCALE	CODE	
1:1	A	

MS 3321

REVISIONS						
SYM	DESCRIPTION	DATE	E.M.N. NO.	DRAFT	CHKD	APPD
X	EXP. RELEASE	12-29-64	X	SRG		
Ø	ORIGINAL RELEASE FOR PRODUCTION	4-22-65	Ø	SRG		

METAL STAMP TMC PART NO. (MS 3321)
1/8 HIGH GOTHIC W/LATEST REV.
LETTER. (ON REAR)

HOLES	DESCRIPTION	REQ.
A	11/64 DIA.	2
B	17/32 DIA.	1
C	11/16 DIA.	2
D	SEE DETAIL	1



UNLESS OTHERWISE SPECIFIED:

1. USE MATERIAL THICKNESS FOR MAXIMUM RADIUS ON ALL BENDS
2. ALL ANGULAR BENDS 90 DEGREES
3. REMOVE ALL BURRS AND SHARP EDGES

- FINISH NOTES:
1. S404 - IRIDITE 14-2 AL-COAT.
 2. S114 - ZINC CHROMATE PRIMER) FRONT AND EDGES ONLY
 3. S220 - RCAF GREY SEMI-GLOSS ENAM)

FRONT VIEW

REF. LD 1276

REQ'D.	ITEM	PART NUMBER	DESCRIPTION	SYMBOL
F. BUDETTI LIST OF MATERIAL				
MATERIAL .051 THICK ALUMINUM 5052-H32			THE TECHNICAL MATERIEL CORP. MAMARONECK, NEW YORK	
FINISH SEE NOTES			TITLE PANEL, FRONT, FUSE HOLDER	
UNLESS OTHERWISE SPECIFIED DIMENSIONS ARE IN INCHES AND INCLUDE CHEMICALLY APPLIED OR PLATED FINISHES			DRAWN SRG DATE 12-29-64	FINAL APPROVAL Ø B MA DATE 1/9/65
DECIMALS .X ± .05 .XX ± .01 .XXX ± .005			TOLERANCES ± 1/64 ANGLES ± 0° 30'	DATE 4/15/65
THE CONTENTS OF THIS DRAWING ARE THE EXCLUSIVE PROPERTY OF THE TECHNICAL MATERIEL CORP. ITS UNAUTHORIZED USE OR REPRODUCTION IN WHOLE OR IN PART IS STRICTLY FORBIDDEN.			ELECT. DES. MECH. DES.	DATE DATE
NOTES			MS3321	Ø
			SHEET	REV. LTR.

1	TER-25K	
Q'TY./UNIT	MODEL USED ON	ASS'Y. NO.
SCALE 1:1	CODE A	

MS-3322 B

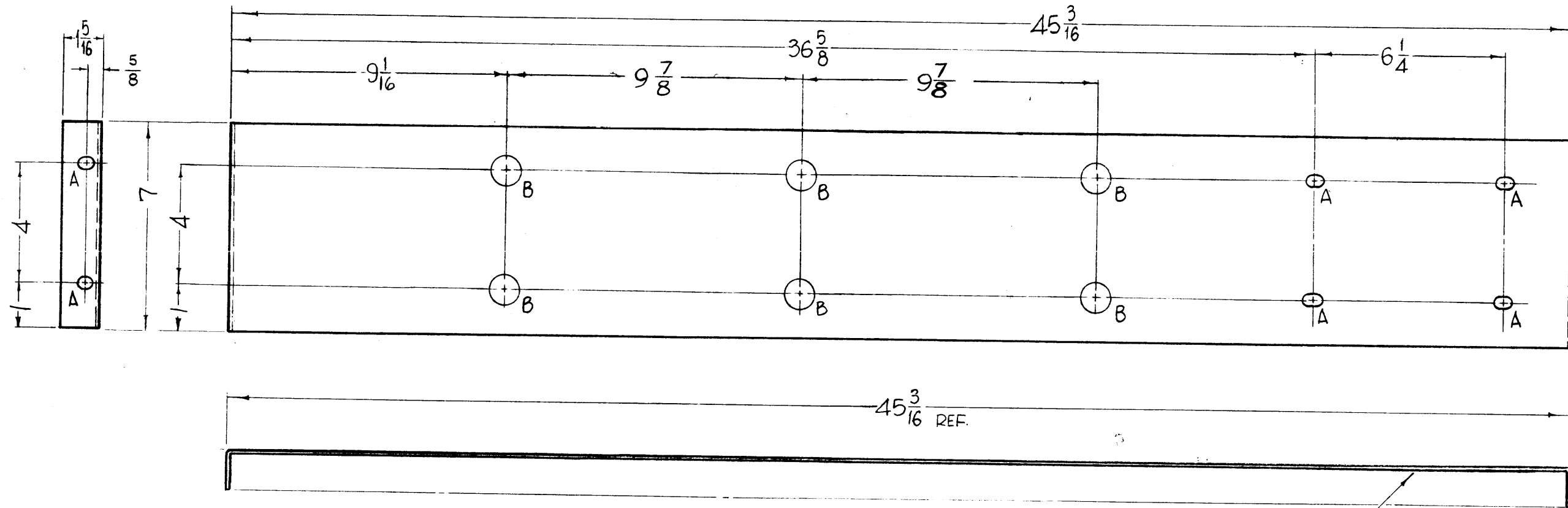
THE CONTENTS OF THIS DRAWING ARE THE EXCLUSIVE PROPERTY OF THE TECHNICAL MATERIÉL CORP. IT UNAUTHORIZED USE OR REPRODUCTION IN WHOLE OR IN PART IS STRICTLY FORBIDDEN.

HOLES

A- 1/4 x 1/2 SLOTS
B- 1" DIA

REQ.

8
6



METAL STAMP TMC PART NO.
MS-3322- 1/8 HIGH GOTHIC
W/LATEST REV. LETTER,
ON BOTTOM OF PLATE.

B	A-SLOTS WERE 15/64 X 15/64 ON BOTT. VIEW 5/16 REF. DIM. DELETED	8.26.64	12170	HPB	@	<i>[Signature]</i>
A	"A"-SLOTS WERE 3/8 X 5/8 DIM 5/8 ON LEFT S. VIEW WAS 1/2	7.8.64	11758	HPB	<i>[Signature]</i>	<i>[Signature]</i>
O	ORIGINAL RELEASE FOR PRODUCTION	5-18-64		SRG		
XZ	1/2 WAS 7/16, 5/8 WAS 9/16 1" WAS 1 1/2, 9 1/16 WAS 9 1/8, 9 7/8 WAS 10	11-15-63		AT		
SYM	DESCRIPTION	DATE	CH. NO.	DRAFTS	CHECKER	ENG. APP.

UNLESS OTHERWISE SPECIFIED:

1. USE MATERIAL THICKNESS FOR MAXIMUM RADIUS ON ALL BENDS.
2. ALL ANGULAR BENDS 90°.
3. REMOVE ALL BURRS AND SHARP EDGES.

UNLESS OTHERWISE SPECIFIED:
DIMENSIONS ARE IN INCHES
TOLERANCES ON
FRACTIONS ± 1/64 DECIMALS ± .005 ANGLES ± 1/2°

SCALE: 1/4" = 1"
MAXIMUM ALLOWABLE TOLERANCES HAVE BEEN DETERMINED AND ANY DEVIATIONS WILL BE CAUSE FOR REJECTION.
REMOVE ALL BURRS AND SHARP EDGES

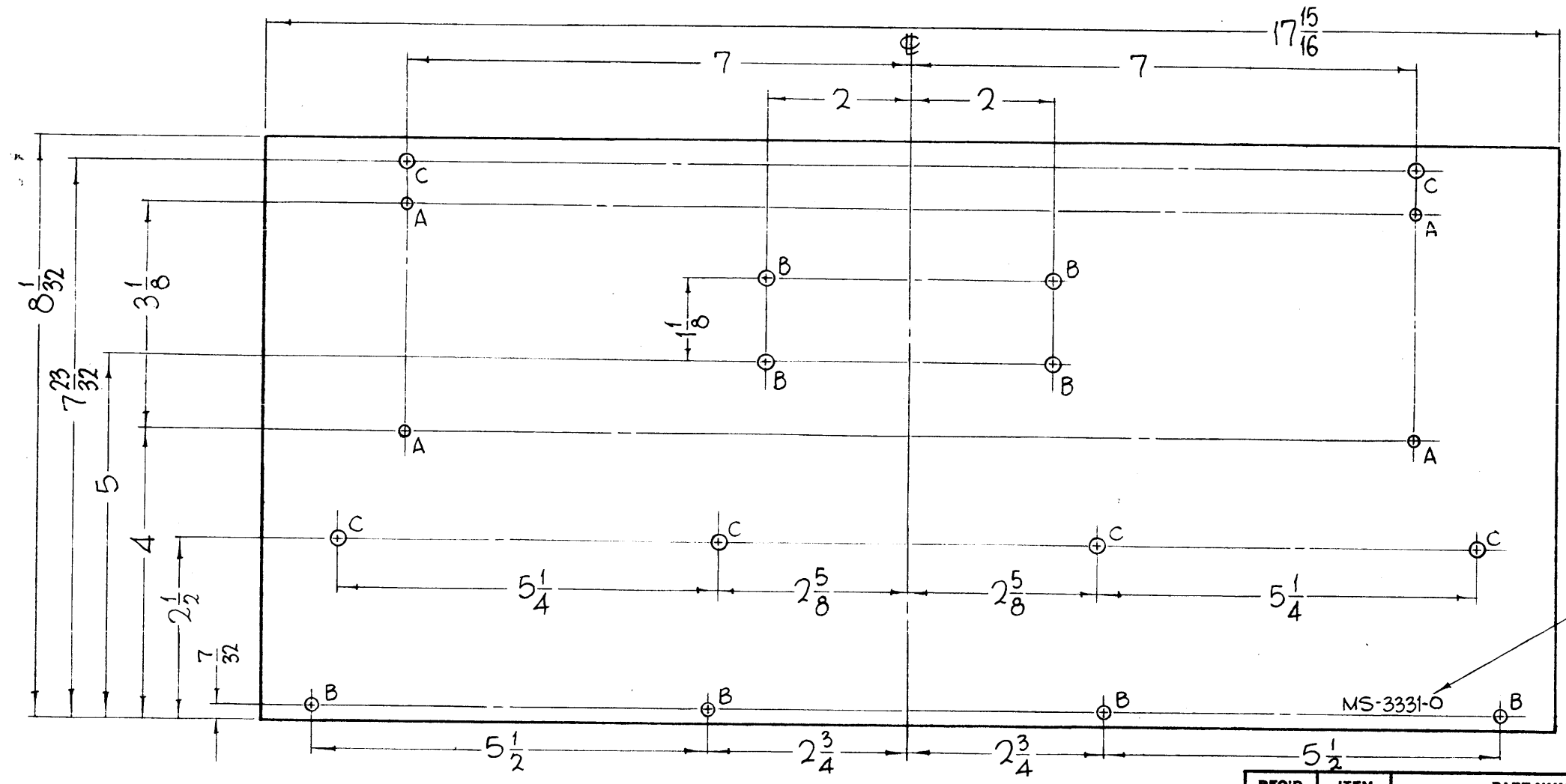
REQ. PER UNIT	1	GPT-200K	AX-394		8-10-63
		MODEL	SECTION	ASS'Y. NO.	DATE
USED ON					

REQ. ITEM	PART NO.	F. BUDETTI	DESCRIPTION	SYMBOL
1/32 THICK			THE TECHNICAL MATERIÉL CORP.	
STOCK SIZE			MAMARONECK, NEW YORK	
COPPER			PLATE, GROUNDING	
MATERIAL				
HOT ROLLED		John C. Biele	<i>[Signature]</i>	<i>[Signature]</i>
TYPE & TEMPER	HEAT TREAT. SPEC.	DRAWN	CHECKED	FINAL APPROVAL
S-245-SILVER PLATE, BRIGHT		<i>[Signature]</i>	<i>[Signature]</i>	MS-3322 B
FINISH & SPEC. NO.	ELEC. DES. APP.	MECH. DES. APP.		

MS-3331-0

REVISIONS

SYM	DESCRIPTION	DATE	E.M.N. NO.	DRAFT	CHKD	APPD
0	ORIGINAL RELEASE FOR PRODUCTION	3-2-64		A.M.		



HOLES	REQ.
A- 9/64 DIA.	4
B- 11/64 DIA.	4
C- 7/32 DIA.	6

METAL STAMP TMC PART NO.
1/8 HIGH GOTHIC.

REF. TMC DWG NO. LD-1282

UNLESS OTHERWISE SPECIFIED:
REMOVE ALL BURRS AND SHARP EDGES.

NOTES

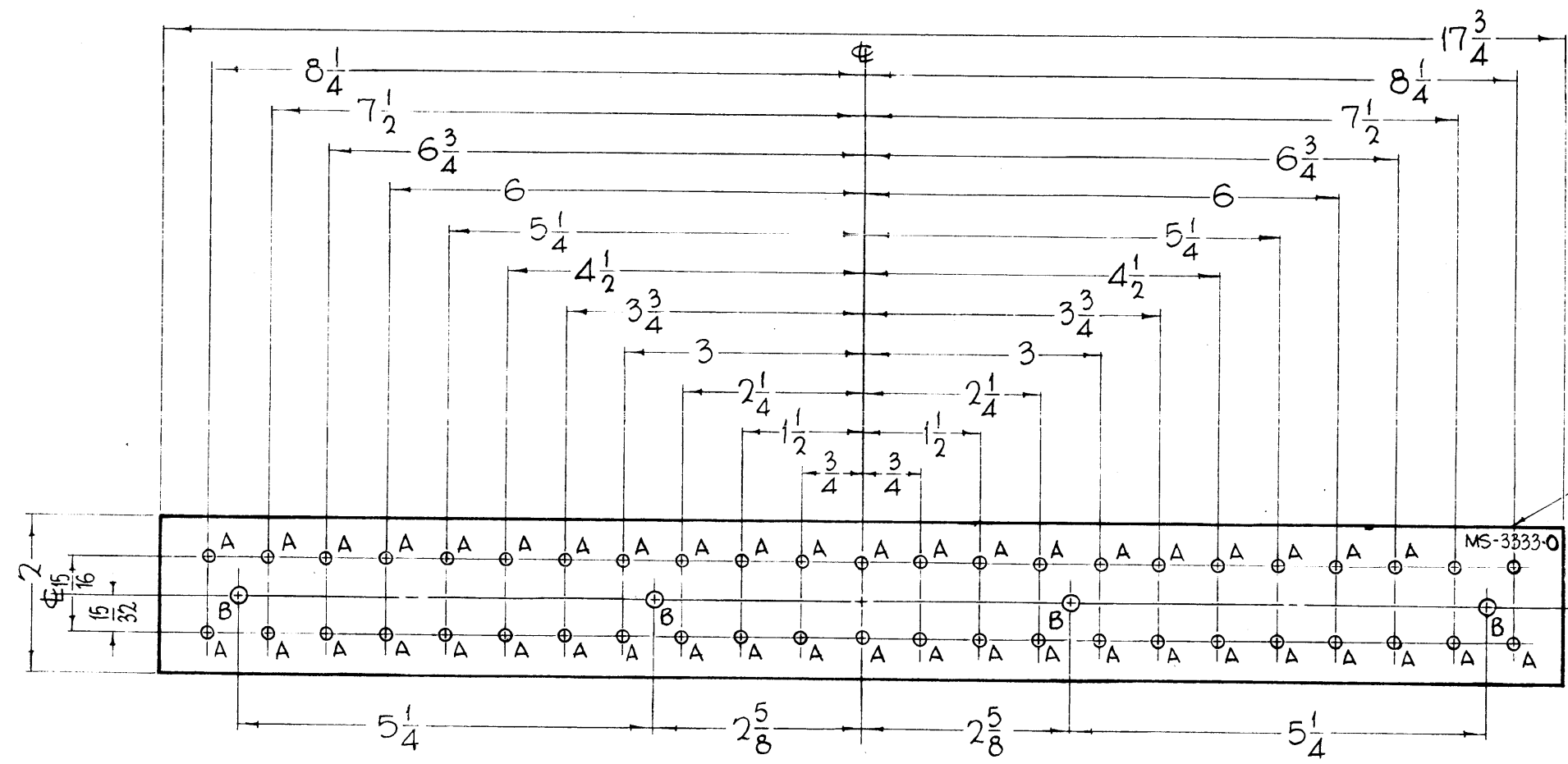
THE CONTENTS OF THIS DRAWING ARE THE EXCLUSIVE PROPERTY OF THE TECHNICAL MATERIEL CORP. ITS UNAUTHORIZED USE OR REPRODUCTION IN WHOLE OR IN PART IS STRICTLY FORBIDDEN.

REQ'D.	ITEM	PART NUMBER	DESCRIPTION	SYMBOL
F. BUDETTI LIST OF MATERIAL				
MATERIAL .064 THICK, ALUMINUM, 5052 - H-32			THE TECHNICAL MATERIEL CORP. MAMARONECK, NEW YORK	
FINISH S-788-BLACK TEXTURED VINYL			TITLE DOOR, BOX, SPARE PARTS, STOWAGE	
UNLESS OTHERWISE SPECIFIED DIMENSIONS ARE IN INCHES AND INCLUDE CHEMICALLY APPLIED OR PLATED FINISHES		DRAWN John C. Biele	DATE 8-27-63	FINAL APPROVAL [Signature]
DECIMALS .X ± .05 .XX ± .01 .XXX ± .005		CHECKED [Signature]	DATE 2/25/64	DATE 3-17-64
FRACTIONS ± 1/64 ANGLES ± 0° 30'		ELECT. DES. [Signature]	DATE 2/25/64	
TOLERANCES		MECH. DES. [Signature]	DATE 2/25/64	
			SHEET MS-3331	REV. LTR. 0

MS-33330

REVISIONS

SYM	DESCRIPTION	DATE	E.M.N. NO.	DRAFT	CHKD	APFD
0	ORIGINAL RELEASE FOR PRODUCTION	3-2-64		A.M.		



HOLES	REQ.
A - NO. 30 DRILL	46
B - 7/32 DIA.	4

METAL STAMP TMC PART NO. 1/8" HIGH GOTHIC.

REF - TMC DWG. NO. LD-1284

UNLESS OTHERWISE SPECIFIED:
REMOVE ALL BURRS AND SHARP EDGES.

NOTES

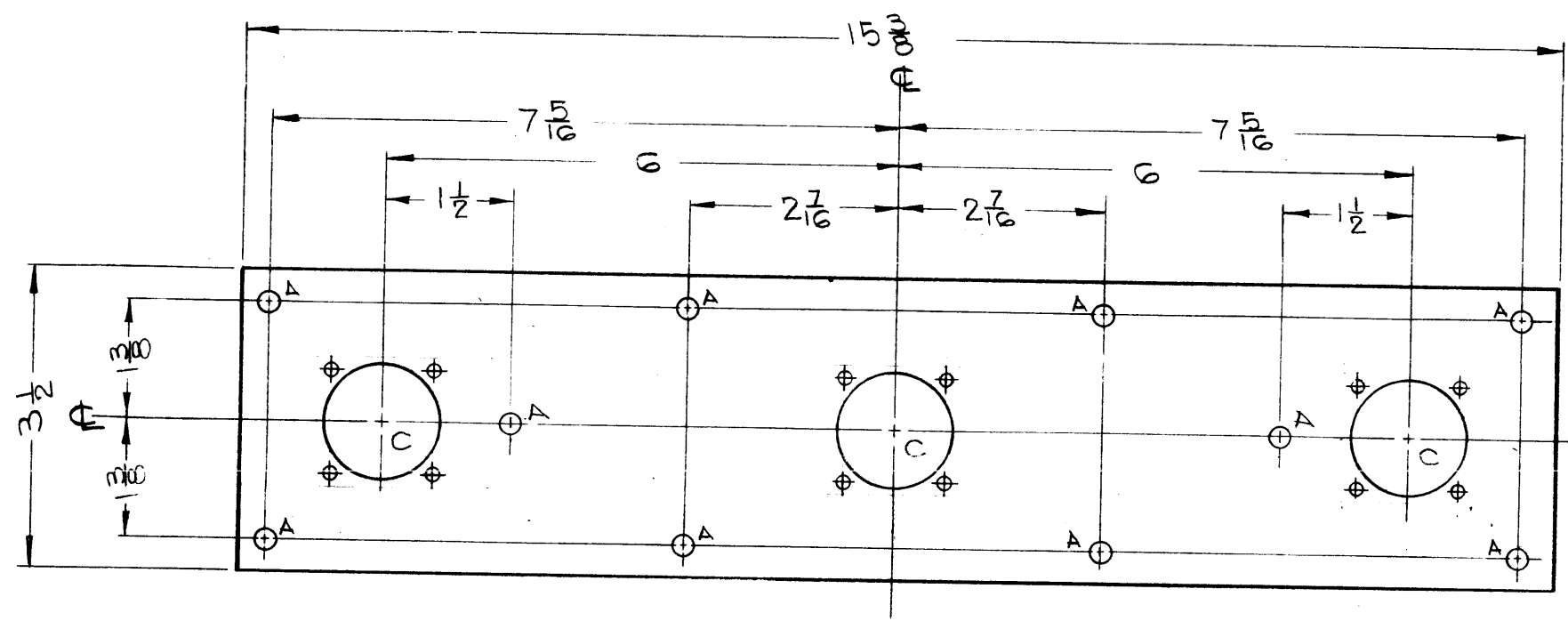
1	GPI-200K	AX-393
QTY./UNIT	MODEL USED ON	ASSY. NO.
SCALE 1/2" = 1"	CODE A	

THE CONTENTS OF THIS DRAWING ARE THE EXCLUSIVE PROPERTY OF THE TECHNICAL MATERIEL CORP. ITS UNAUTHORIZED USE OR REPRODUCTION IN WHOLE OR IN PART IS STRICTLY FORBIDDEN.

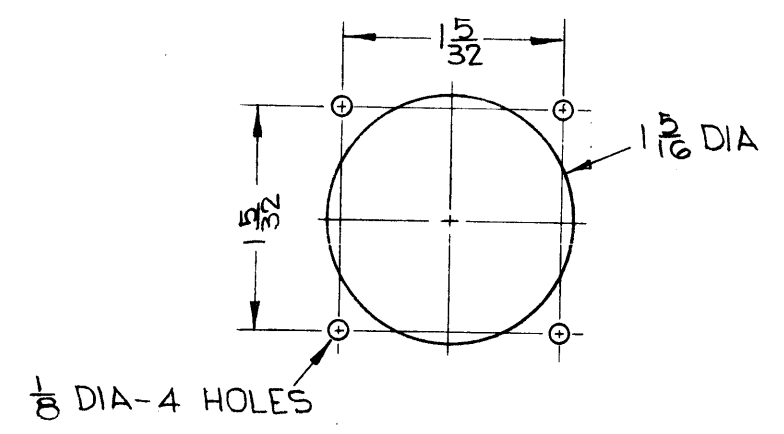
REQ'D.	ITEM	PART NUMBER	DESCRIPTION	SYMBOL	
F. BUDETTI LIST OF MATERIAL					
MATERIAL .081 THICK, ALUMINUM, 5052 H-32			THE TECHNICAL MATERIEL CORP. MAMARONECK, NEW YORK		
FINISH S-788-BLACK TEXTURED VINYL					
TITLE PLATE, FUSE MTG LARGE					
UNLESS OTHERWISE SPECIFIED DIMENSIONS ARE IN INCHES AND INCLUDE CHEMICALLY APPLIED OR PLATED FINISHES		DRAWN John C. Biele	DATE 8-28-63	FINAL APPROVAL <i>[Signature]</i>	DATE
		CHECKED <i>[Signature]</i>	DATE 2/25/64		
		ELECT. <i>[Signature]</i>	DATE 2/25/64	MS-3333	0
		MECH. DES. <i>[Signature]</i>	DATE 2/17/64	SHEET	REV. LTR.

MS-3337

THE CONTENTS OF THIS DRAWING ARE THE EXCLUSIVE PROPERTY OF THE TECHNICAL MATERIEL CORP. ITS UNAUTHORIZED USE OR REPRODUCTION IN WHOLE OR IN PART IS STRICTLY FORBIDDEN.



HOLE
A — 1 5/16 DIA — 10 REQ



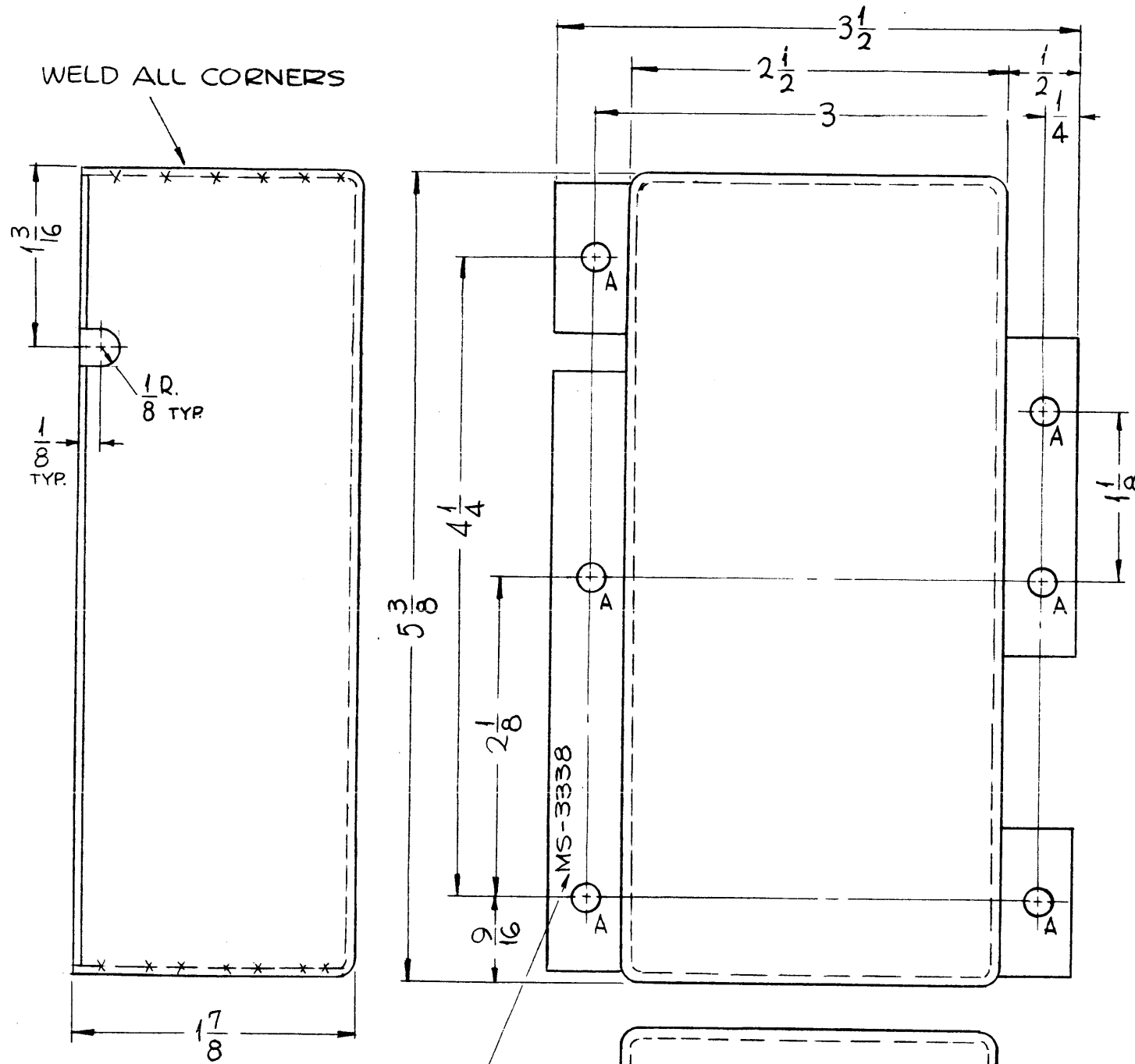
'C' DETAIL - 3 REQ

REF: LD-1285

0	ORIGINAL RELEASE FOR PRODUCTION	5/27/64	0	A.M.		
SYM	DESCRIPTION	DATE	CH. NO.	DRAFTS	CHECKER	ENG. APP.
UNLESS OTHERWISE SPECIFIED: DIMENSIONS ARE IN INCHES TOLERANCES ON FRACTIONS ± 1/64 DECIMALS ± .005 ANGLES ± 1/2°		SCALE: 1:2		MAXIMUM ALLOWABLE TOLERANCES HAVE BEEN DETERMINED AND ANY DEVIATIONS WILL BE CAUSE FOR REJECTION. REMOVE ALL BURRS AND SHARP EDGES		

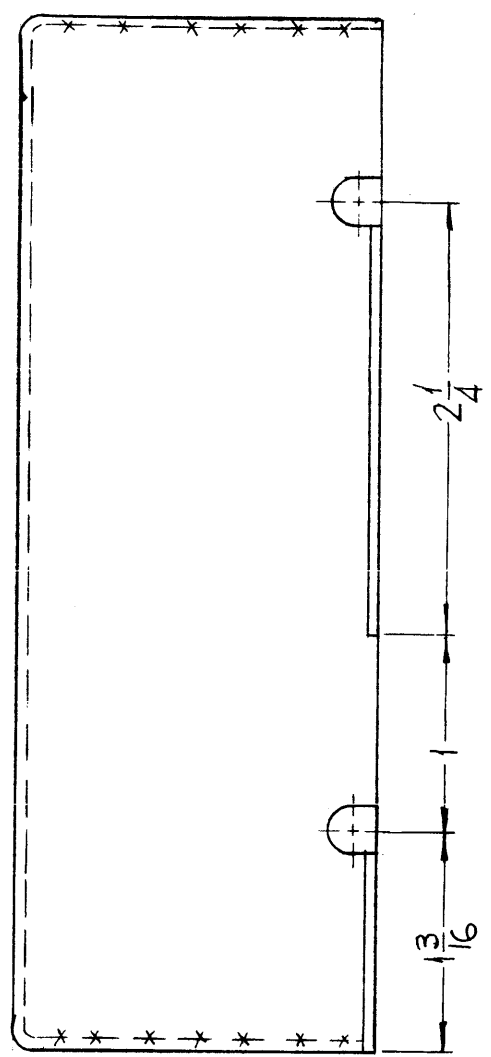
1	GPT-200K	AX-397		B-30-63
REQ. PER UNIT	MODEL	SECTION	ASS'Y. NO.	DATE
USED ON				

REQ.	ITEM	PART NO.	F. BUDETTI	DESCRIPTION	SYMBOL
	1/8 THK			THE TECHNICAL MATERIEL CORP. MAMARONECK, NEW YORK	
	ALUMINUM			PANEL, CONNECTOR MOUNTING	
	5052-H32			aa	RAC
	S404-IRIDITE			02B	12/7/63
					MS-3337
					0



MS-3338 A

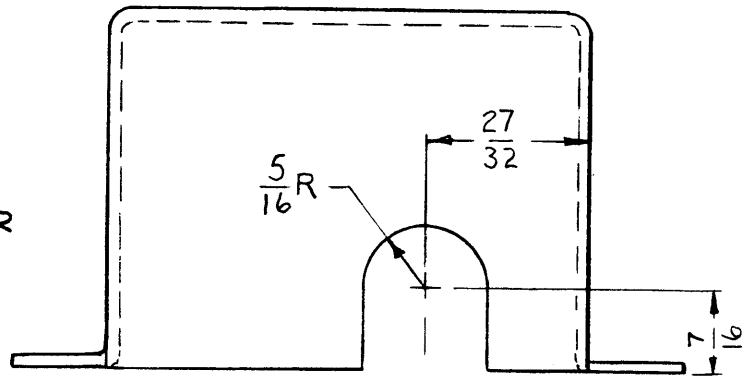
REVISIONS						
SYM	DESCRIPTION	DATE	E.M.N. NO.	DRAFT	CHKD	APFD
X4	RE-DESIGNED & REDRAWN					
O	ORIGINAL RELEASE FOR PRODUCTION	5-13-64	0	A.M.		
A	B ¹ HOLE, 3/8 DIA. DELE; 3/16 R. SLOT.	4-22-65	13896	FL.	gob	gob



HOLES: REQ.
 A - 11/64 DIA. — 6

- UNLESS OTHERWISE SPECIFIED:
1. USE MATERIAL THICKNESS FOR MAXIMUM RADIUS ON ALL BENDS.
 2. ALL ANGULAR BENDS 90°.
 3. REMOVE ALL BURRS AND SHARP EDGES.

METAL STAMP TMC PART NO. 1/8 HIGH GOTHIC.
 W/LATEST REVISION LETTER



REF: LD-1286

REQ'D.	ITEM	PART NUMBER	DESCRIPTION	SYMBOL
F. BUDETTI LIST OF MATERIAL				
MATERIAL			THE TECHNICAL MATERIEL CORP. MAMARONECK, NEW YORK	
.064 THICK ALUMINUM			COVER, CAPACITOR	
FINISH			TITLE	
S-404 YELLOW IRIDITE			COVER, CAPACITOR	
UNLESS OTHERWISE SPECIFIED DIMENSIONS ARE IN INCHES AND INCLUDE CHEMICALLY APPLIED OR PLATED FINISHES			DRAWN SRG DATE 2-27-64	
			CHECKED [Signature] DATE	
			ELECT. DES. [Signature] DATE 3/9/64	
			MECH. DES. [Signature] DATE 3/9/64	
			FINAL APPROVAL [Signature] DATE	
			MS-3338 A	
			SHEET	
			REV. LTR.	

1	GPT-200K (AF105)	A-2765
Q'TY./UNIT	MODEL USED ON	ASS'Y. NO.
SCALE 1"=1"	CODE	

NOTES

THE CONTENTS OF THIS DRAWING ARE THE EXCLUSIVE PROPERTY OF THE TECHNICAL MATERIEL CORP. ITS UNAUTHORIZED USE OR REPRODUCTION IN WHOLE OR IN PART IS STRICTLY FORBIDDEN.

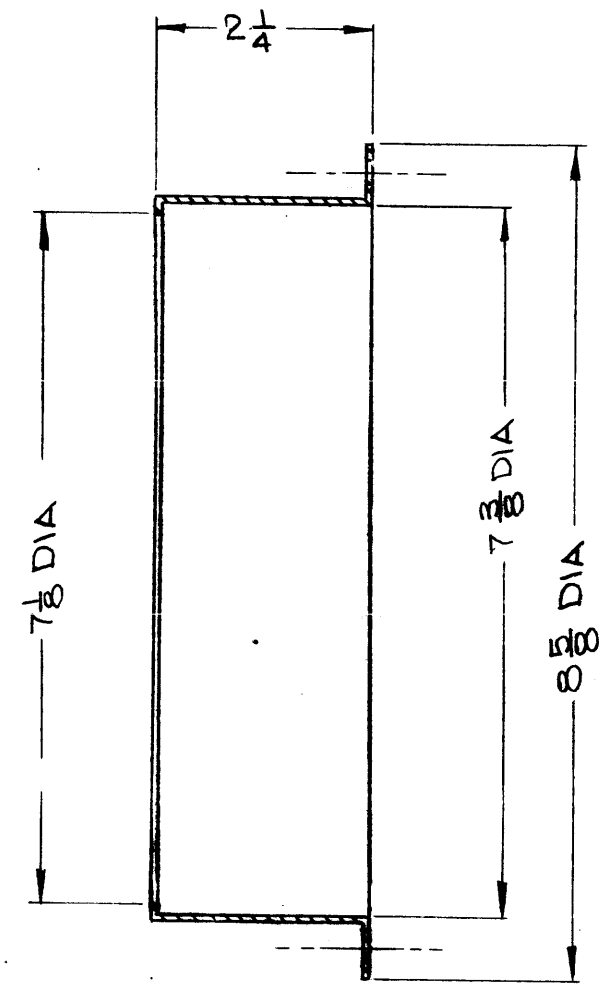
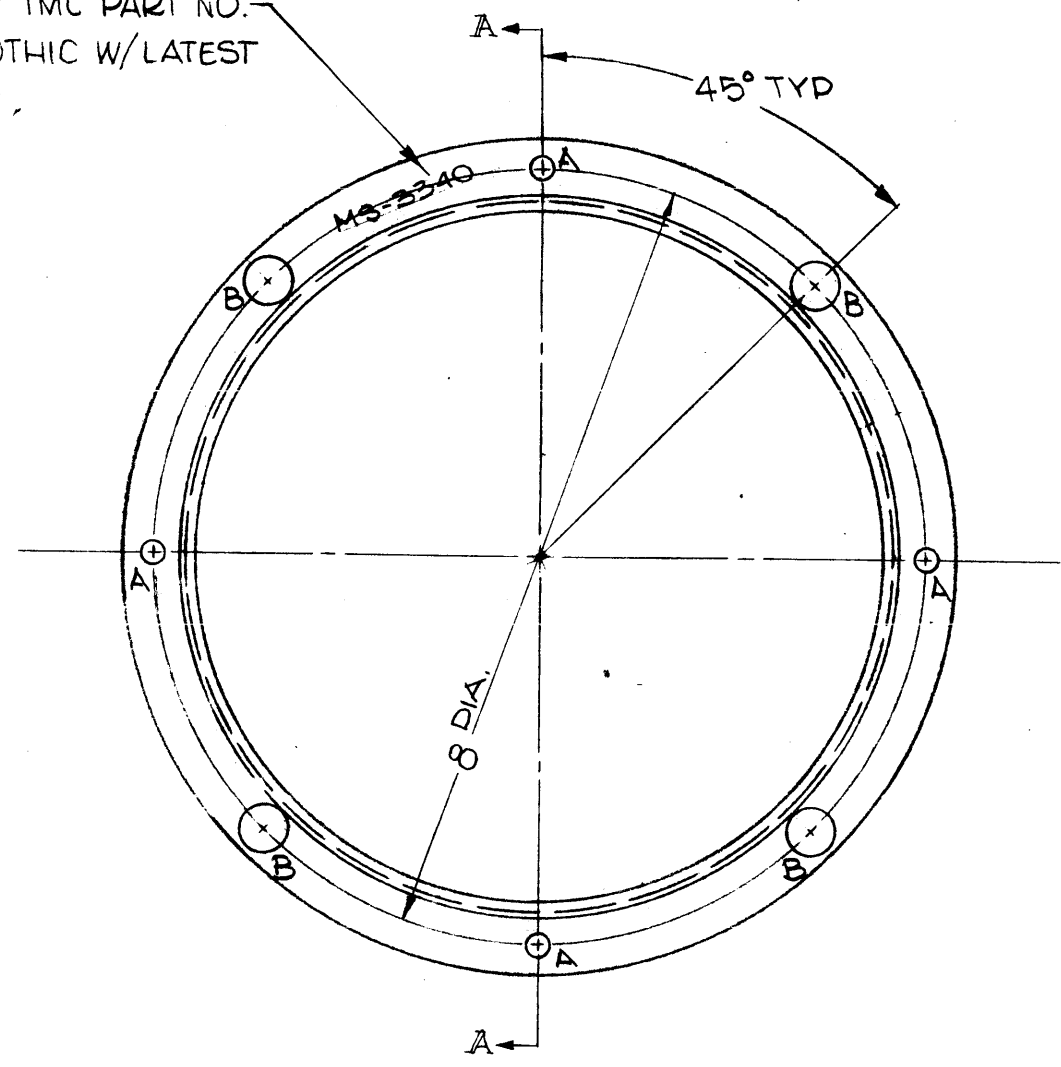
DECIMALS	FRACTIONS
.X ± .05	± 1/64
.XX ± .01	ANGLES ± 0° 30'
.XXX ± .005	

MS-3340

THE CONTENTS OF THIS DRAWING ARE THE EXCLUSIVE PROPERTY OF THE TECHNICAL MATERIEL CORP. ITS UNAUTHORIZED USE OR REPRODUCTION IN WHOLE OR IN PART IS STRICTLY FORBIDDEN.

HOLE	REQ
A — 7/32 DIA	4
B — 1/2 DIA	4

METAL STAMP TMC PART NO. 1/8 HIGH GOTHIC W/LATEST REV. LETTER,



SECTION A-A

UNLESS OTHERWISE SPECIFIED:

1. USE MATERIAL THICKNESS FOR MAXIMUM RADIUS ON ALL BENDS.
2. ALL ANGULAR BENDS 90°.
3. REMOVE ALL BURRS AND SHARP EDGES.

SYM	DESCRIPTION	DATE	CH. NO.	DRAFTS	CHECKER	ENG. APP.
B	ORIGINAL RELEASE FOR PROD.	5-18-64		SR6		
X3	#16 ALUMINUM MESH WELDE TO INSIDE, REMOVED	12-13-63				

UNLESS OTHERWISE SPECIFIED:
 DIMENSIONS ARE IN INCHES
 TOLERANCES ON FRACTIONS ± 1/64 DECIMALS ± .5 ANGLES ± 1/2°

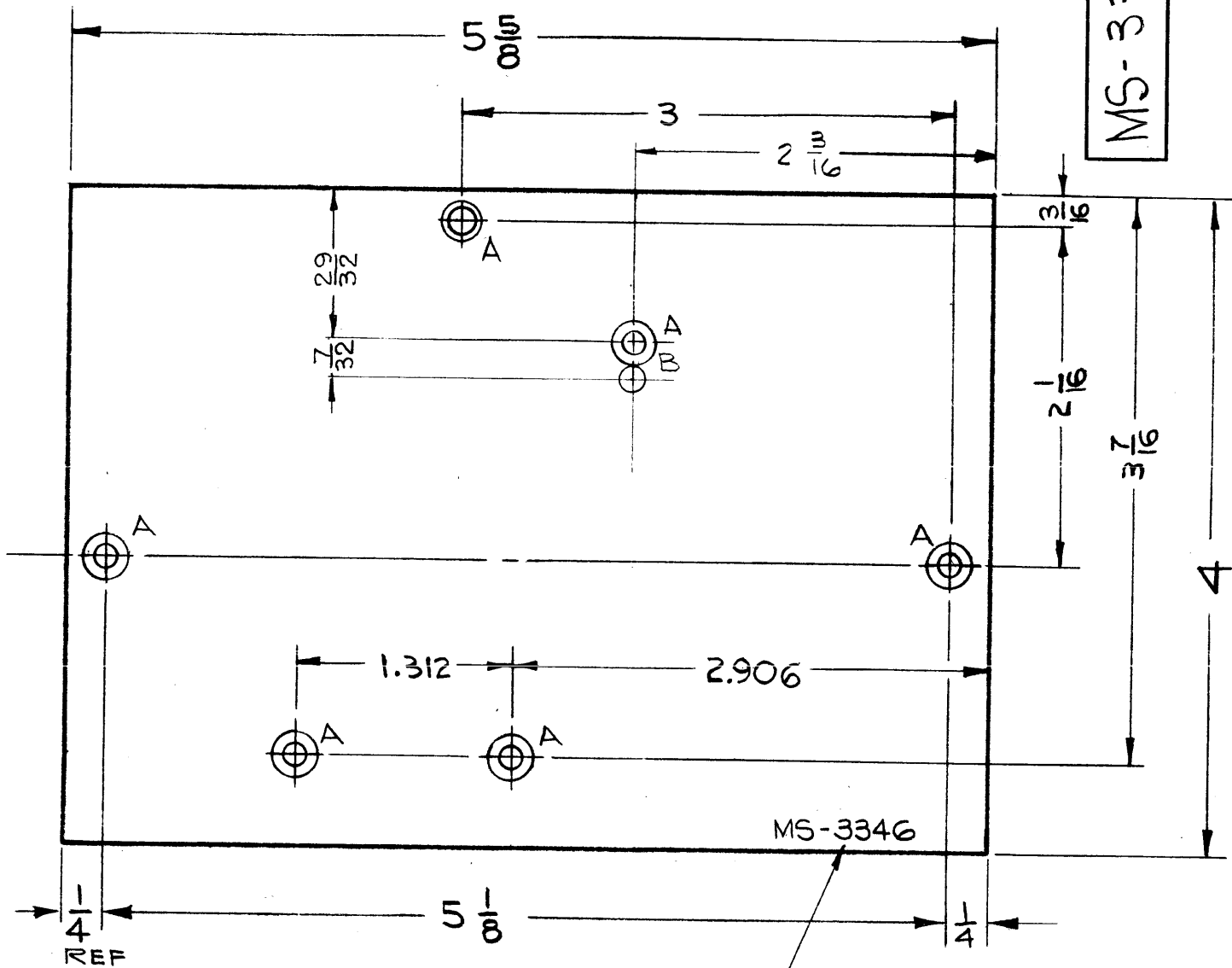
SCALE: 1:2
 MAXIMUM ALLOWABLE TOLERANCES HAVE BEEN DETERMINED AND ANY DEVIATIONS WILL BE CAUSE FOR REJECTION.
 REMOVE ALL BURRS AND SHARP EDGES

REQ. PER UNIT	MODEL	SECTION	ASS'Y. NO.	DATE
1	GPT-200K	AX-397		8-31-63
3	GPT-200K	AX-395		8-31-63

USED ON

REQ.	ITEM	PART NO.	F. BUDETTI	DESCRIPTION	SYMBOL
	.064			THE TECHNICAL MATERIEL CORP. MAMARONECK, NEW YORK	
	ALUMINUM			SHIELD, FAN R.F.	
			<i>Richard</i>		
			8-31-63	aa	<i>RFL</i>
	S404-IRIDITE				
			<i>QRB</i>	<i>arc 2/15/64</i>	MS-3340

REVISIONS						
SYM	DESCRIPTION	DATE	E.M.N. NO.	DRAFT	CHKD	APPD
MS-3346						



LEGEND		
HOLE	REQ	DESCRIPTION
A	6	.144 DIA. & CSK 82° x .284 DIA.
B	1	9/64 DIA

NOTE
1. REMOVE ALL BURRS & SHARP EDGES.

METAL STAMP TMC
PART NO. 1/8 HIGH GOTHIC

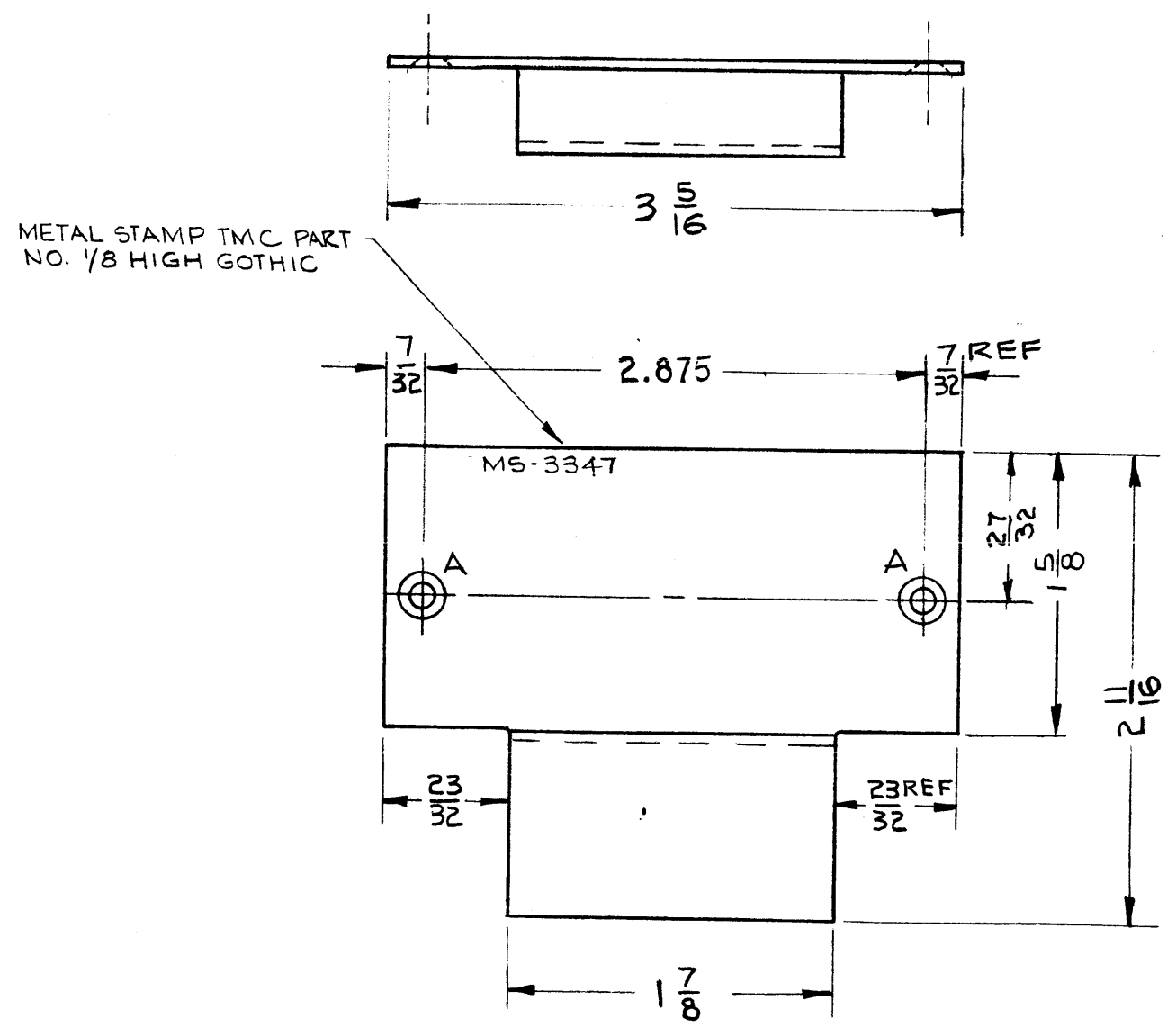
REQ'D.	ITEM	PART NUMBER	KOHN	DESCRIPTION	E3037-58	SYMBOL
LIST OF MATERIAL						
MATERIAL			THE TECHNICAL MATERIEL CORP.			
.064 THK ALUMINUM			MAMARONECK, NEW YORK			
5052 - H32			TITLE			
FINISH			S404 YELLOW IRIDITE			
S404 YELLOW IRIDITE			PLATE, SIDE, LEFT			
UNLESS OTHERWISE SPECIFIED			DRAWN	DATE	FINAL APPROVAL	DATE
DIMENSIONS ARE IN INCHES AND INCLUDE			<i>[Signature]</i>	4-9-63	<i>[Signature]</i>	
CHEMICALLY APPLIED OR PLATED FINISHES			CHECKED	DATE		
			<i>[Signature]</i>	5/7/63		
DECIMALS			ELECT. DES.	DATE	MS-3346	
.X ± .05			R. KOHN	5/7/63		
.XX ± .01			MECH. DES.	DATE		
.XXX ± .005			W. JOZAN	5/8/63		
TOLERANCES					SHEET	
FRACTI NS					REV. LTR.	
± 1/64						
ANGLES						
± 0° 30'						

QTY./UNIT	MODEL USED ON	ASS'Y. NO.
1	TTR-10	AX409 THRU AX412
SCALE	CODE	
<i>[Symbol]</i>	A	
THE CONTENTS OF THIS DRAWING ARE THE EXCLUSIVE PROPERTY OF THE TECHNICAL MATERIEL CORP. ITS UNAUTHORIZED USE OR REPRODUCTION IN WHOLE OR IN PART IS STRICTLY FORBIDDEN.		

NOTES

MS-3347
A

REVISIONS					
SYM	DESCRIPTION	DATE	E.M.N. NO.	DRAFT	CHKD
A	CLERICAL CHANGE	8.24.64		JSB	Ⓢ



A HOLE #27 .144 DIA & CSK 82° x .284 DIA, 2 REQ'D.

- NOTES:
1. USE MATERIAL THICKNESS FOR MAX RADIUS ON ALL BENDS
 2. ALL ANGULAR BENDS 90°
 3. REMOVE ALL BURRS & SHARP EDGES.

REQ'D.	ITEM	PART NUMBER	DESCRIPTION	SYMBOL
		KOHN	E3037-61	
LIST OF MATERIAL				
MATERIAL		THE TECHNICAL MATERIEL CORP.		
.064 THK 5052-H32 ALUM		MAMARONECK, NEW YORK		
FINISH		TITLE		
S-404 YELLOW IRIDITE		COVER, IFT TANK		
UNLESS OTHERWISE SPECIFIED DIMENSIONS ARE IN INCHES AND INCLUDE CHEMICALLY APPLIED OR PLATED FINISHES		DRAWN	DATE	FINAL APPROVAL
		<i>[Signature]</i>	4-5-63	<i>[Signature]</i>
		CHECKED	DATE	
		<i>[Signature]</i>	5-7-63	
		ELECT. DES.	DATE	
		R. KOHN	5-7-63	
		MECH. DES.	DATE	
		N. Jordan	5/8/63	
				MS-3347
				A
				REV. LTR.

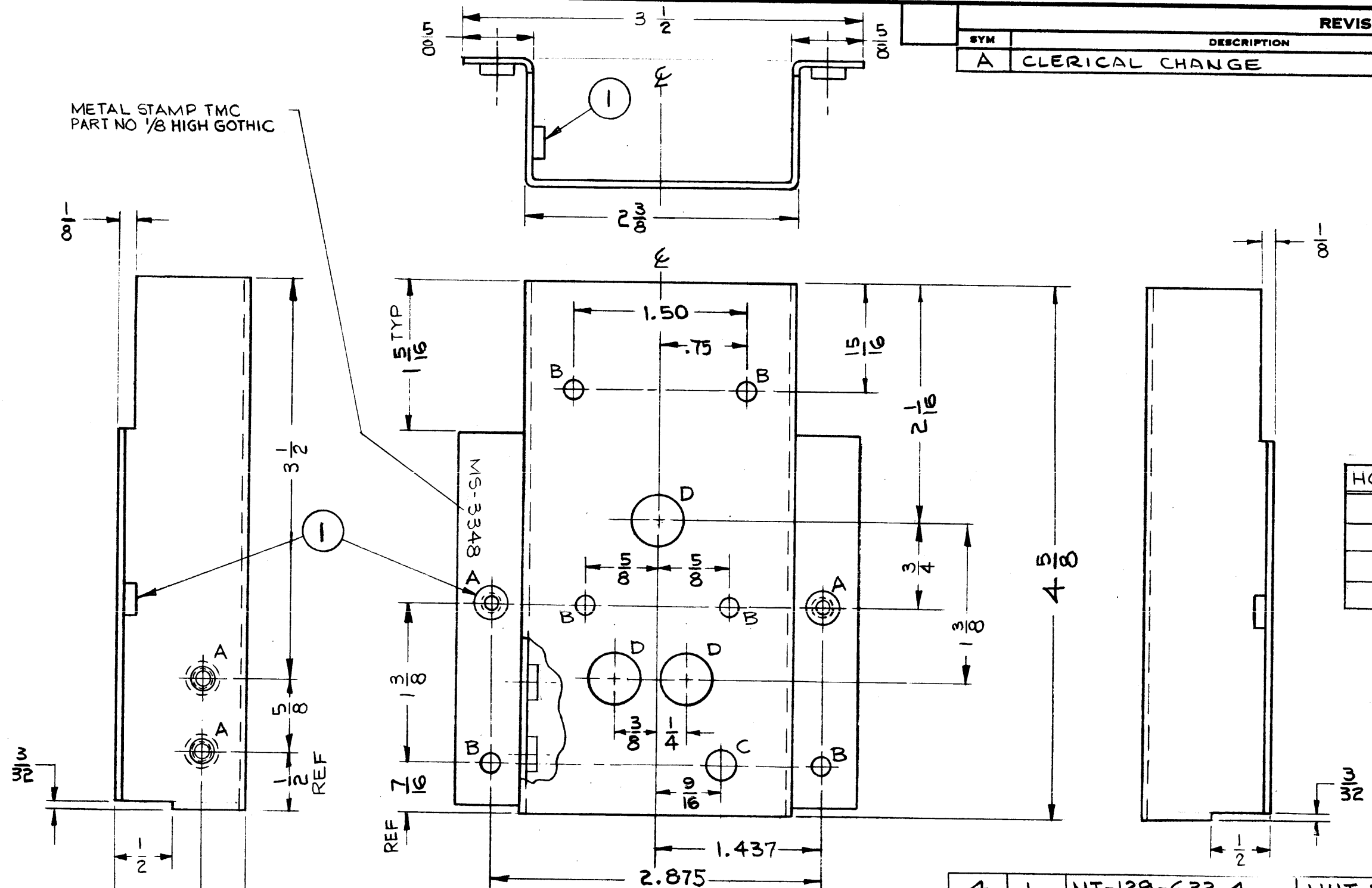
1	TTR-10	AX-409 THRU AX-412
QTY./UNIT	MODEL USED ON	ASSY. NO.
SCALE	CODE	
<i>[Symbol]</i>	A	
THE CONTENTS OF THIS DRAWING ARE THE EXCLUSIVE PROPERTY OF THE TECHNICAL MATERIEL CORP. ITS UNAUTHORIZED USE OR REPRODUCTION IN WHOLE OR IN PART IS STRICTLY FORBIDDEN.		

NOTES

REVISIONS

SYM	DESCRIPTION	DATE	E.M.N. NO.	DRAFT	CHKD	APPD
A	CLERICAL CHANGE	8.24.6A	9	JSB		

METAL STAMP TMC
PART NO 1/8 HIGH GOTHIC



HOLE	DESCRIPTION	REQ'D
A	.191-.194 DIA	4
B	5/32 DIA	6
C	1/4 DIA	1
D	7/16 DIA	3

- NOTES:
1. USE MATERIAL THICKNESS FOR MAX. RADIUS ON ALL BENDS UNLESS OTHERWISE SPECIFIED
 2. ALL ANGULAR BENDS 90°
 3. REMOVE ALL BURRS & SHARP EDGES
 4. MOUNT (ITEM #) IN ALL "A" HOLES AS SHOWN AFTER FINISHING.

NOTES

Q'TY./UNIT	TTR-10	AX-409 THRU AX-412
SCALE	CODE	ASS'Y. NO.
	A	

THE CONTENTS OF THIS DRAWING ARE THE EXCLUSIVE PROPERTY OF THE TECHNICAL MATERIEL CORP. ITS UNAUTHORIZED USE OR REPRODUCTION IN WHOLE OR IN PART IS STRICTLY FORBIDDEN.

4	1	NT-129-632-4	NUT, ROUND, SWAGE TYPE
REQ'D.	ITEM	PART NUMBER	DESCRIPTION
		KOHN	E3037-56

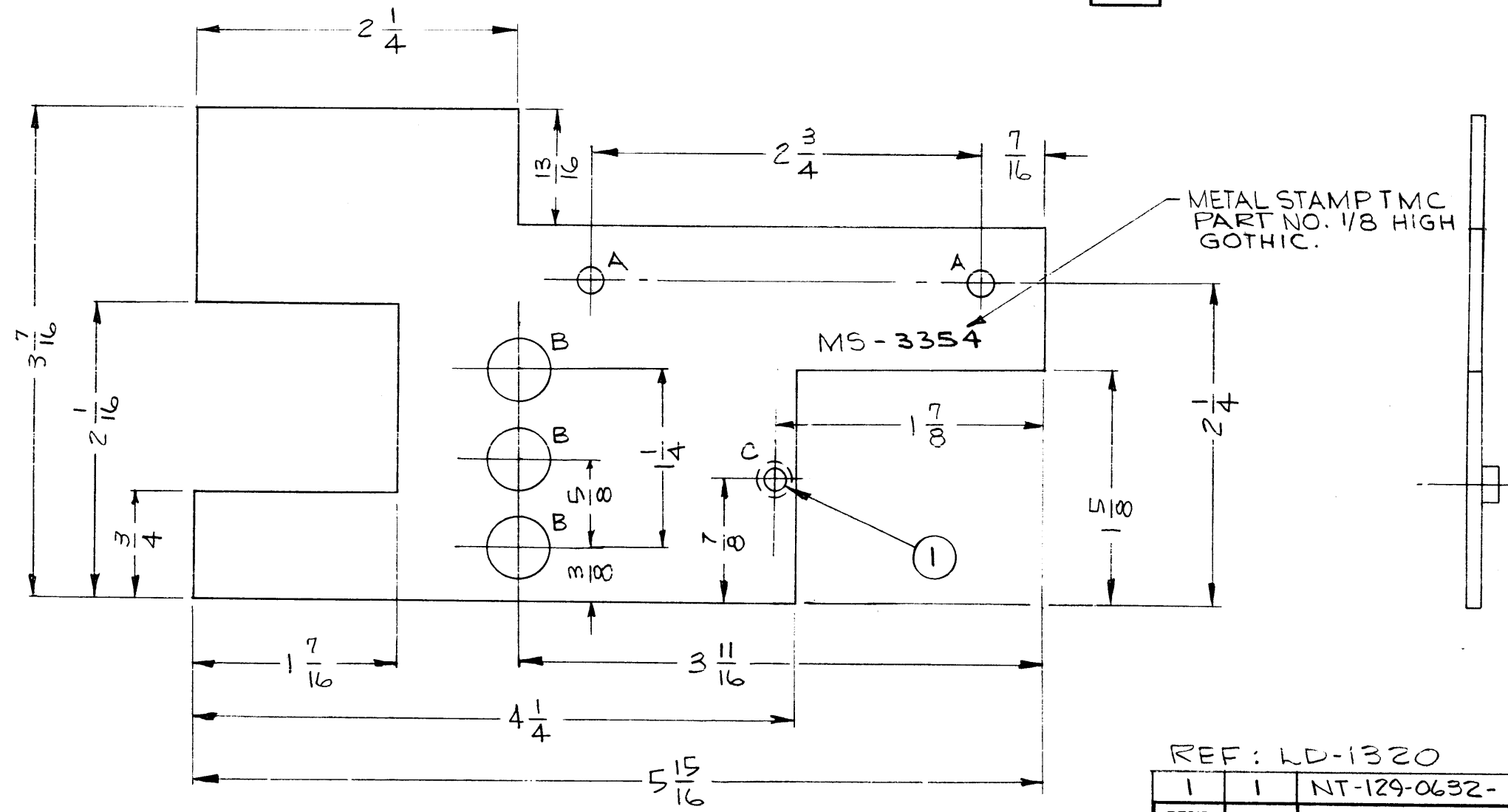
LIST OF MATERIAL

MATERIAL	THE TECHNICAL MATERIEL CORP. MAMARONECK, NEW YORK		
5052-H32 ALUMINUM	SHIELD, WRAPAROUND, 1 FT TANK		
FINISH	TITLE		
S-404 YELLOW IRIDITE	SHIELD, WRAPAROUND, 1 FT TANK		
UNLESS OTHERWISE SPECIFIED DIMENSIONS ARE IN INCHES AND INCLUDE CHEMICALLY APPLIED OR PLATED FINISHES		BRAWN	DATE
		4-10-63	FINAL APPROVAL
		CHECKED	DATE
		5-7-63	
		SELECT. DES.	DATE
		R. KOHN	5-7-63
		MECH. DES.	DATE
		W. JORDAN	5/8/63
DECIMALS	TOLERANCES	FRACTIONS	
.X ± .05		± 1/64	
.XX ± .01		AN LES	
.XXX ± .005		± 0° 30'	
		SHEET	REV. LTR.
		MS-3348	A

MS-3354

REVISIONS

SYM	DESCRIPTION	DATE	E.M.N. NO	DRAFT	CHKD	APPD



HOLE LEGEND		
HOLE	DESCRIPTION	REQD
A	1/64 DIA	2
B	7/16 DIA	3
C	.191-.194 DIA	1

REF: LD-1320

REQ'D.	ITEM	PART NUMBER	DESCRIPTION	SYMBOL
1	1	NT-129-0632-4	NUT, SWAGE	E3037-117

MATERIAL		LIST OF MATERIAL	
.081 THK ALUMINUM 5052-H32		THE TECHNICAL MATERIEL CORP. MAMARONECK, NEW YORK	
FINISH S404 YELLOW IRIDITE		TITLE PLATE, SHIELD	

QTY./UNIT	MODEL USED ON	ASS'Y. NO.
1	TTR-10	AX-413
SCALE	CODE	
	A	

THE CONTENTS OF THIS DRAWING ARE THE EXCLUSIVE PROPERTY OF THE TECHNICAL MATERIEL CORP. ITS UNAUTHORIZED USE OR REPRODUCTION IN WHOLE OR IN PART IS STRICTLY FORBIDDEN.

UNLESS OTHERWISE SPECIFIED
DIMENSIONS ARE IN INCHES AND INCLUDE
CHEMICALLY APPLIED OR PLATED FINISHES

DECIMALS .X ± .05 .XX ± .01 .XXX ± .005	TOLERANCES	FRACTIONS ± 1/64 ANGLES ± 0° 30'
--	------------	---

DRAWN	DATE	FINAL APPROVAL	DATE
<i>[Signature]</i>	5-10-63	<i>[Signature]</i>	
CHECKED	DATE		
<i>[Signature]</i>	5-16-63		
ELECT. DES.	DATE		
R KOHN	1-16-64	MS-3354	
MECH. DES.	DATE		
W. JORDAN	1/16/64	SHEET	REV. LTR.

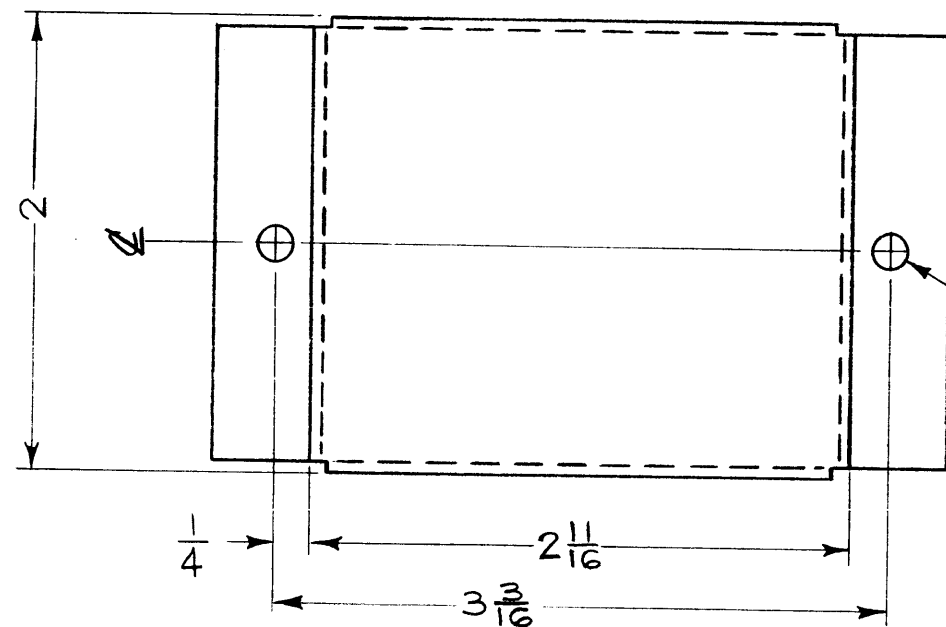
AFTER FINISHING,
1. MOUNT ITEM # 1 IN "C" HOLE AS SHOWN

NOTES

MS-3367

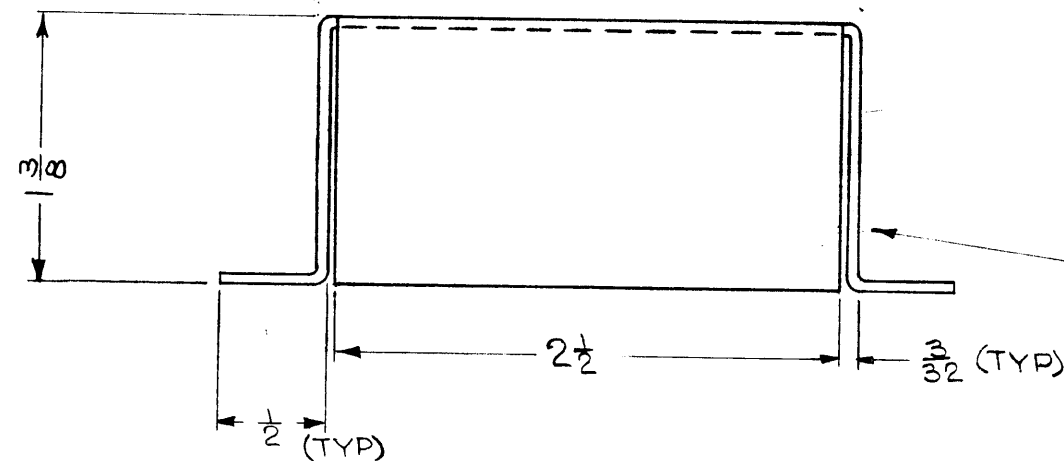
REVISIONS

SYM	DESCRIPTION	DATE	E.M.N. NO.	DRAFT	CHKD	APPD



$\frac{11}{64}$ DIA. - 2 HOLES

~ UNLESS OTHERWISE SPECIFIED ~
 1~ USE MATERIAL THICKNESS FOR MAX. RADIUS ON ALL BENDS.
 2~ ALL BENDS 90°.



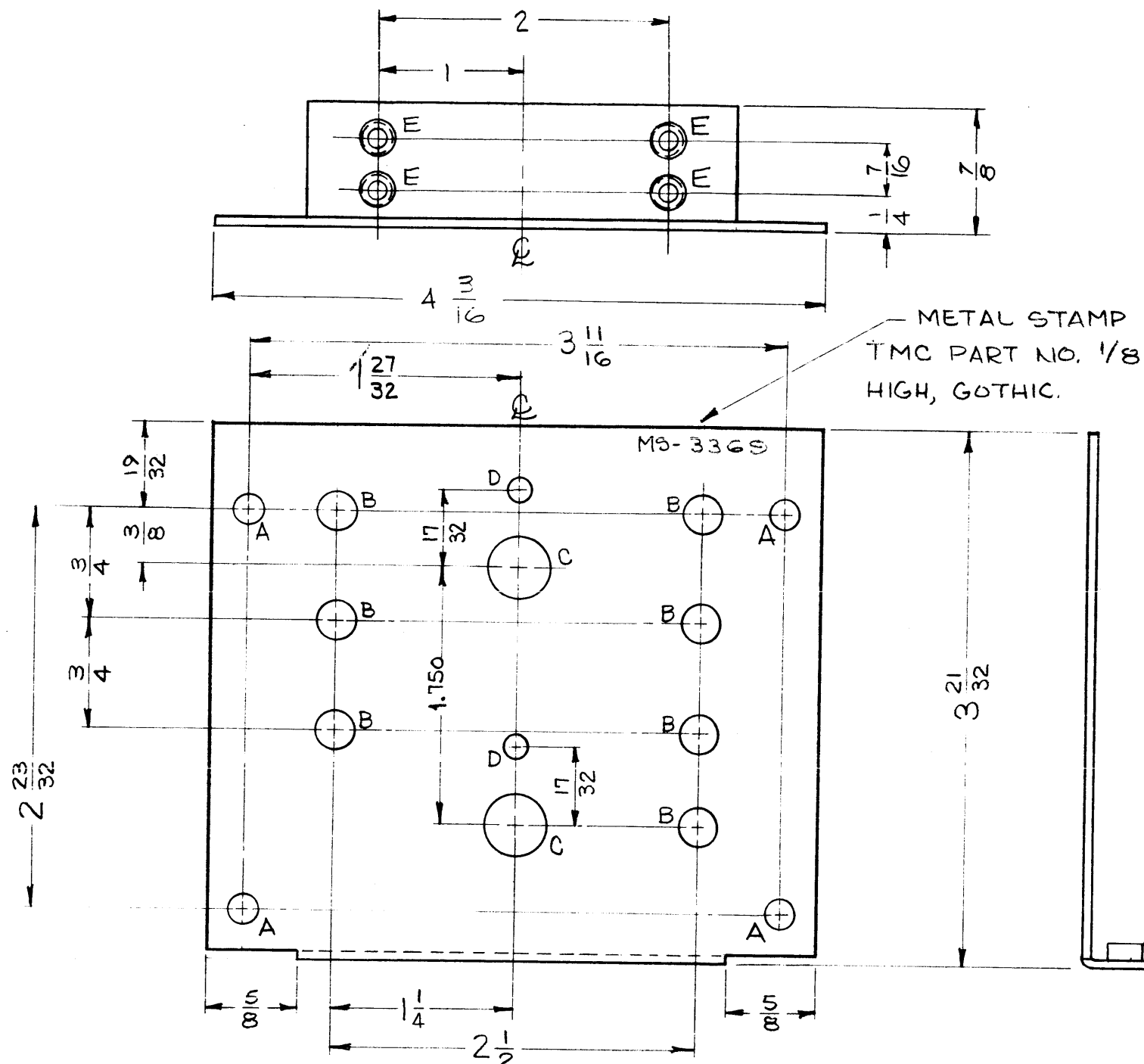
METAL STAMP TMC PART NO. $\frac{1}{8}$ HIGH GOTHIC ON SIDE.

REF: LD-1317

REQ'D.	ITEM	PART NUMBER	DESCRIPTION	SYMBOL
LIST OF MATERIAL				
MATERIAL .064 THK 5052 H32 ALUMINUM			THE TECHNICAL MATERIEL CORP. MAMARONECK, NEW YORK	
FINISH S404-YELLOW IRIDITE				
TITLE			COVER, DIODE BOARD	
UNLESS OTHERWISE SPECIFIED DIMENSIONS ARE IN INCHES AND INCLUDE CHEMICALLY APPLIED OR PLATED FINISHES			DRAWN <i>[Signature]</i> CHECKED <i>[Signature]</i> ELECT. DES. <i>[Signature]</i> MECH. DES. <i>[Signature]</i>	DATE 5-2-63 DATE 6-4-63 DATE DATE
Q'TY./UNIT 1 MODEL USED ON LFA-4 CODE ASS'Y. NO. A-3178			FINAL APPROVAL <i>[Signature]</i> DATE 6.11.63	MS-3367 SHEET
DECIMALS .X ± .05 .XX ± .01 .XXX ± .005			FRACTI NS ± 1/64 ANGLES ± 0° 30'	TOLERANCES REV. LTR.

NOTES

THE CONTENTS OF THIS DRAWING ARE THE EXCLUSIVE PROPERTY OF THE TECHNICAL MATERIEL CORP. ITS UNAUTHORIZED USE OR REPRODUCTION IN WHOLE OR IN PART IS STRICTLY FORBIDDEN.



MS-3369

REVISIONS						
SYM	DESCRIPTION	DATE	E.M.N. NO.	DRAFT	CHKD	APFD

LEGEND		
HOLE	DESCRIPTION	REQ.
A	3/16 DIA.	4
B	1/4 DIA.	7
C	13/32 DIA.	2
D	5/32 DIA.	2
E	.191-.194 DIA.	4

1 MOUNT IN ALL "E" HOLES AS SHOWN

- ~ UNLESS OTHERWISE SPECIFIED ~
- 1~ USE MATERIAL THICKNESS FOR MAX. RADIUS ON ALL BENDS.
 - 2~ ALL BENDS 90°.
 - 3~ DEBURR ALL SHARP EDGES.
 - 4~ MOUNT INSERTS AFTER FINISHING.

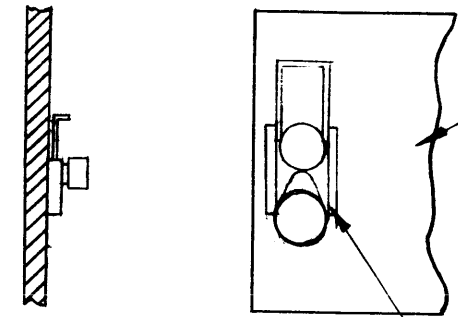
NOTES

1	TTR-10	A-2773
Q'TY./UNIT	MODEL USED ON	ASS'Y. NO.
SCALE FULL	CODE A	
THE CONTENTS OF THIS DRAWING ARE THE EXCLUSIVE PROPERTY OF THE TECHNICAL MATERIEL CORP. ITS UNAUTHORIZED USE OR REPRODUCTION IN WHOLE OR IN PART IS STRICTLY FORBIDDEN.		

4	1	NT-129-632-4	NUT, ROUND, SWAGE TYPE	E
REQ'D.	ITEM	PART NUMBER	DESCRIPTION	SYMBOL
R. KOHN		LIST OF MATERIAL		E3037-16
MATERIAL		THE TECHNICAL MATERIEL CORP. MAMARONECK, NEW YORK		
.064 ALUMINUM 5052-H32		TITLE PLATE, SWITCH MOUNTING		
FINISH		S404 - YELLOW IRIDITE		
UNLESS OTHERWISE SPECIFIED DIMENSIONS ARE IN INCHES AND INCLUDE CHEMICALLY APPLIED OR PLATED FINISHES		DRAWN <i>F. Jensen</i>	DATE 5-17-63	FINAL APPROVAL <i>RP</i>
DECIMALS .X ± .05 .XX ± .01 .XXX ± .005		CHECKED <i>Hole</i>	DATE 5-22-63	DATE 1-16-64
FRACTIONS ± 1/64 ANGLES ± 0° 30'		ELECT. DES. R. KOHN	DATE 1-16-64	MS-3369
TOLERANCES		MECH. DES. W. JORDAN	DATE 1/16/64	SHEET
				REV. LTR.

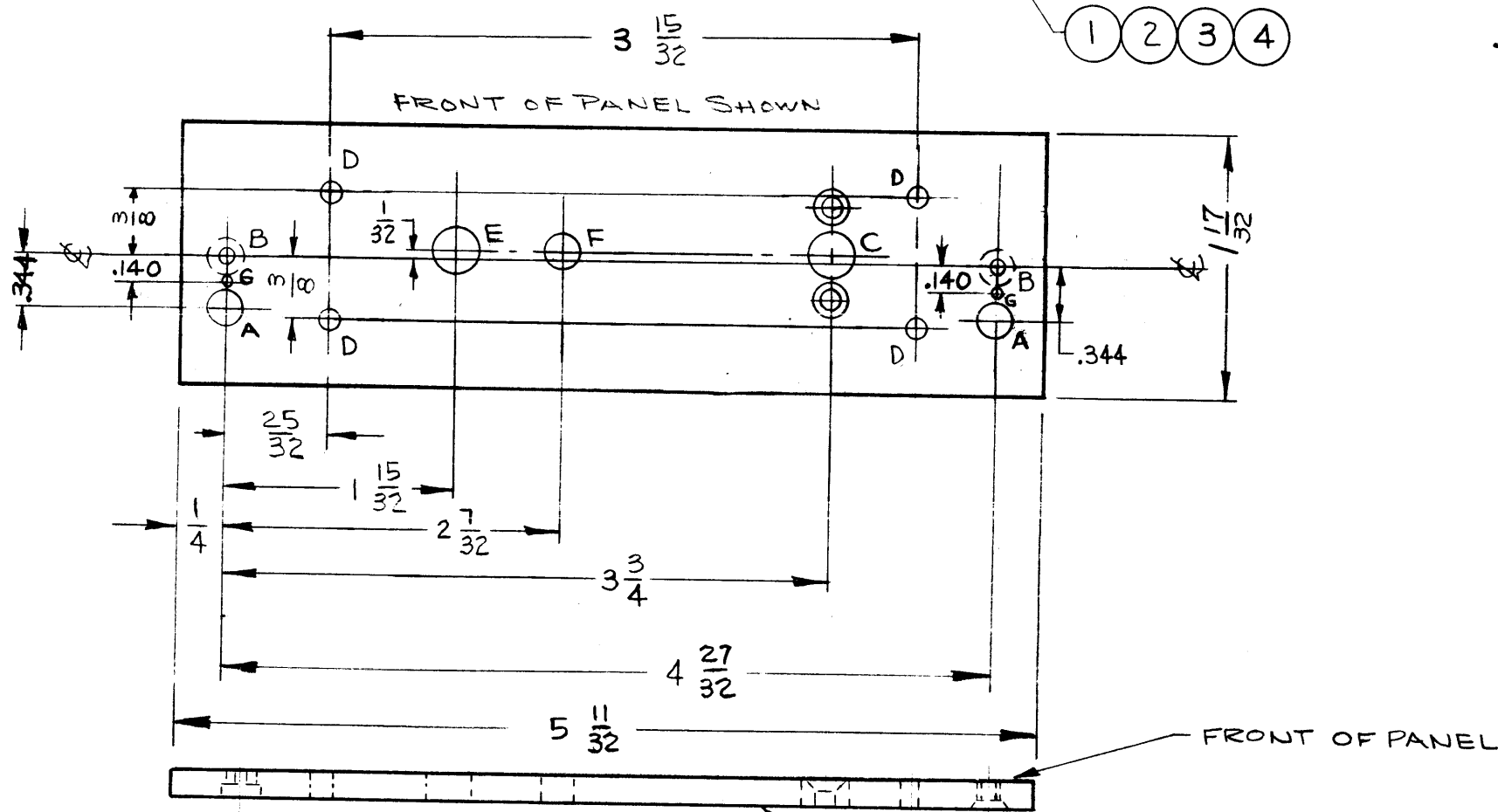
MS 3370 E

THE CONTENTS OF THIS DRAWING ARE THE EXCLUSIVE PROPERTY OF THE TECHNICAL MATERIEL CORP. ITS UNAUTHORIZED USE OR REPRODUCTION IN WHOLE OR IN PART IS STRICTLY FORBIDDEN.



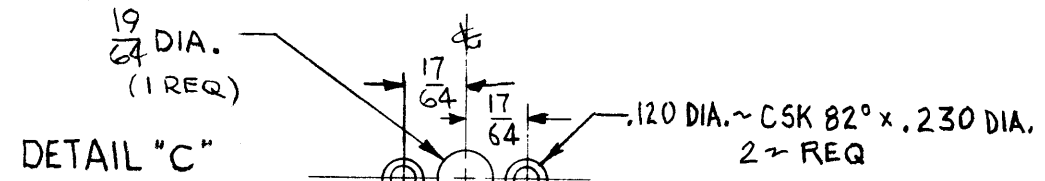
MOUNT ITEMS 1 THRU 4 ON FRONT OF PANEL AS SHOWN USING "A" AND "B" HOLES. - AFTER FINISHING.

- ~ MACHINING ~
1. LATERAL BOW OF PANEL MUST BE KEPT WITHIN 1/32.
 2. MILL ALL EDGES.
 3. HOLES MUST BE DRILLED.
 4. PANEL MUST BE FREE OF ALL MACHINING MARKS, GOUGES & SCRATCHES. IF NECESSARY, SAND FRONT OF PANEL WITH NO. 120 SANDPAPER.



HOLE LEGEND		
HOLE	DESCRIPTION	REQD
A	.228 DIA	2
B	.082 DIA - C BORE 3/16 DIA X .039 DEEP REAR SIDE	2
C	SEE DETAIL	1
D	1/8 DIA	4
E	9/32 DIA	1
F	3/16 DIA.	1
G	1/16 DIA	2

- FINISH ALL OVER :
1. S404 YELLOW IRIDITE
 2. S114 ZINC CROMATE PRIMER
 3. S115 SMOOTH GRAY ENAMEL



METAL STAMP TMC PART NO. 1/8 HIGH GOTHIC ON REAR OF PANEL.

REF: LD-1333

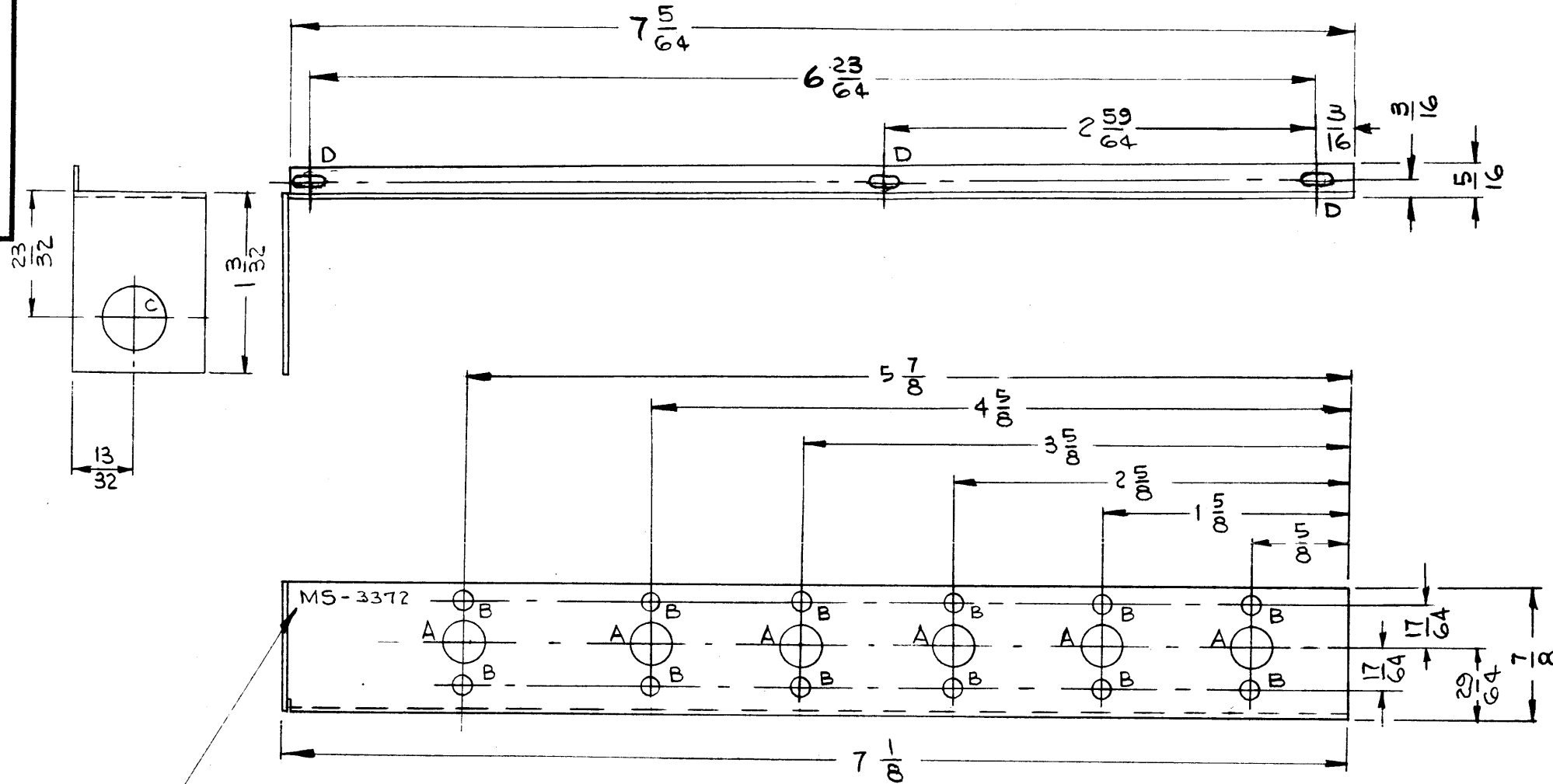
2	4	FS-120-1	POST, SNAPSLIDE, FASTENER	
4	3	WA-131-22	WASHER, SPRING, TENSION	
2	2	FS-118-1	LATCH, SNAPSLIDE FASTENER	
2	1	FS-119-2	LATCHGUIDE, SNAPSLIDE, FASTENER	
REQ.	ITEM	PART NO.	JORDAN DESCRIPTION E3037-202	SYMB L
.081 THK			THE TECHNICAL MATERIEL CORP.	
STOCK SIZE			MAMARONECK, NEW YORK	
ALUMINUM			PANEL, FRONT	
MATERIAL				
2024-T3				
TYPE & TEMPER			HEAT TREAT. SPEC.	DATE
H			5-23-63	
FINISH & SPEC. NO.			ELEC. DES. APP.	MECH. DES. APP.
			RKohn	W.A. P... 5/23/63
			MS 3370 E	

E	CTR HOLE DET "C" WAS .290 DIA	1-6-66	17625	WHO		
D	DIM. 290 WAS 9/32 ON DET. "C"	8-5-65	13570	W.V.		
C	"A" HOLE DIA. WAS 13/64	1-13-65	13275	J.P.		
B	IT. 4 WAS FS-120-2	9-17-64	12404	WB		
A	"A" HOLE WAS .228 DIA., "G" HOLE ADD. IT. 1 WAS FS-119-1, IT. 1 CHG TO (-2) ON PICT.	8-7-64	12072	WB		
SYM	DESCRIPTION	DATE	CH. NO.	DRAFTS	CHECKER	ENG. APP.
UNLESS OTHERWISE SPECIFIED:		SCALE: A				
DIMENSIONS ARE IN INCHES		MAXIMUM ALLOWABLE TOLERANCES HAVE BEEN DETERMINED AND ANY DEVIATIONS WILL BE CAUSE FOR REJECTION.				
TOLERANCES ON FRACTIONS ± 1/64 DECIMALS ± .008 ANGLES ± 1/20		REMOVE ALL BURRS AND SHARP EDGES				
1	TIRT					
REQ. PER UNIT	MODEL	SECTION	ASSY. NO.	DATE		
				5-23-63		
USED ON						

A

THE CONTENTS OF THIS DRAWING ARE THE EXCLUSIVE PROPERTY OF THE TECHNICAL MATERIEL CORP. ITS UNAUTHORIZED USE OR REPRODUCTION IN WHOLE OR IN PART IS STRICTLY FORBIDDEN.

MS-3372



HOLE LEGEND		
HOLE	DESCRIPTION	REQ'D
A	9/32 DIA	6
B	1/8 DIA	12
C	13/32 DIA	1
D	1/8 x 1/4 SLOTS	3

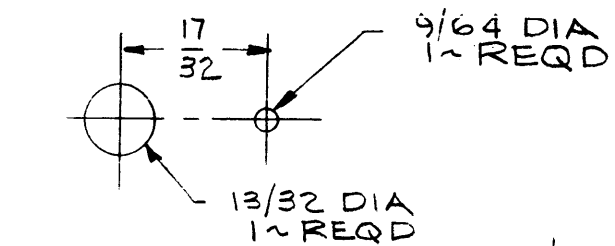
METAL STAMP TMC PART NO. 1/8 HIGH GOTHIC, WITH LATEST REV. LETTER.

- ~ UNLESS OTHERWISE SPECIFIED ~
1. USE MAT'L THICKNESS FOR MAX. RADIUS ON ALL BENDS
 2. ALL ANGULAR BENDS 90°
 3. REMOVE ALL BURRS & SHARP EDGES

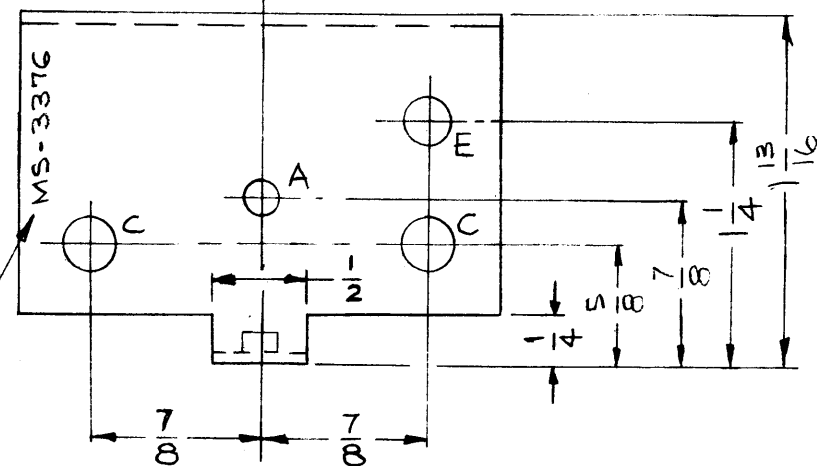
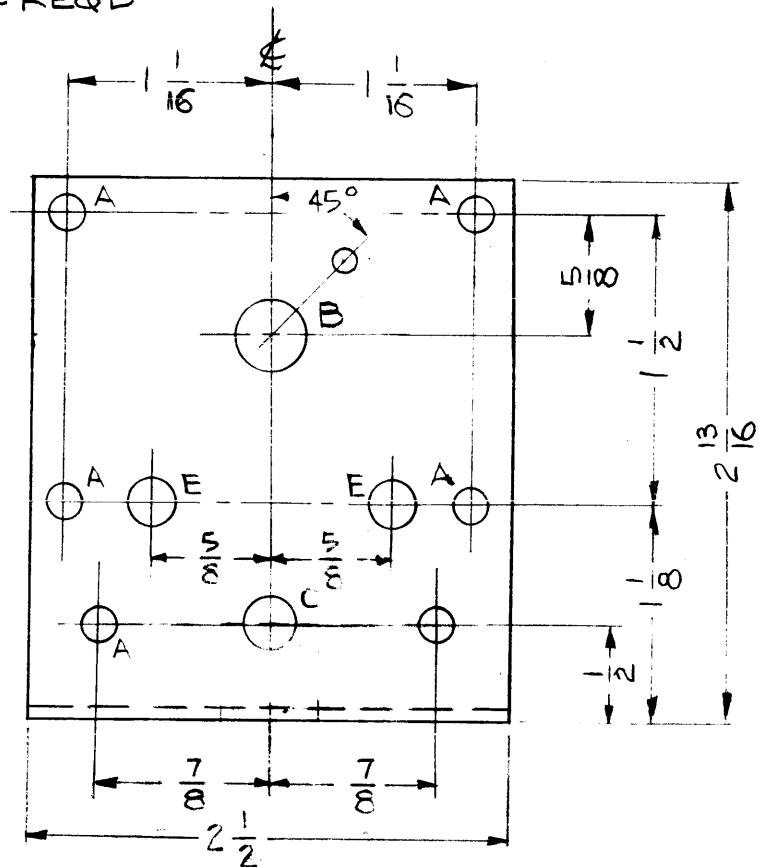
A	(D) SLOTS WERE (3) B HOLES TOP VIEW DIMS COMP. REVISED	3-19-65	13644	JS	JCH	J
	SYMBOL	DATE	CH. NO.	DRAFTS	CHECKER	ENG. APP.
UNLESS OTHERWISE SPECIFIED:		SCALE: $\frac{1}{16}$		A		
DIMENSIONS ARE IN INCHES		MAXIMUM ALLOWABLE TOLERANCES HAVE BEEN DETERMINED AND ANY DEVIATIONS WILL BE CAUSE FOR REJECTION.				
TOLERANCES ON FRACTIONS $\pm 1/64$ DECIMALS $\pm .005$ ANGLES $\pm 1/2^\circ$		REMOVE ALL BURRS AND SHARP EDGES				

1	TTRT				
1	TTRR				
REQ. PER UNIT	MODEL	SECTION	ASSY. NO.	DATE	
USED ON					

REQ. ITEM	PART NO.	JORDAN DESCRIPTION E-3037-203	SYMBOL
.040 STOCK SIZE		THE TECHNICAL MATERIEL CORP. MAMARONECK, NEW YORK	
ALUMINUM		BRACKET, CAPACITOR MTG.	
MATERIAL			
5052-H32		5/24/65	
TYPE & TEMPER	HEAT TREAT. SPEC.	DRAWN	CHECKED
S404 YELLOW IRIDITE		RC	WAP
FINISH & SPEC. NO.	ELEC. DES. APP.	MECH. DES. APP.	MS-3372 A

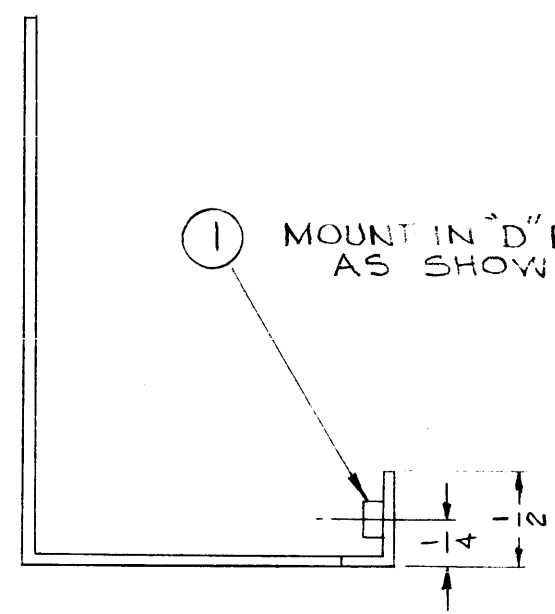


DETAIL B



METAL STAMP TMC PART NO. 1/8 HIGH GOTHIC

MS-3376



REVISIONS

SYM	DESCRIPTION	DATE	E.M.N. NO.	DRAFT	CHKD	APPD
-----	-------------	------	------------	-------	------	------

HOLE LEGEND		
HOLE	DESCRIPTION	REQD
A	3/16 DIA	7
B	SEE DETAIL	1
C	9/32 DIA	3
D	.191-.194 DIA	1
E	1/4 DIA	3

- ~ UNLESS OTHERWISE SPECIFIED ~
1. USE MAT'L THICKNESS FOR MAX. BEND RADIUS.
 2. ALL ANGULAR BENDS 90°.
 3. REMOVE ALL BURS & SHARP EDGES.
 4. MOUNT INSERT AFTER FINISHING

REF: LD-1323

REQ'D.	ITEM	PART NUMBER	DESCRIPTION	SYMBOL
1	1	NT-129-632-4	NUT, SWAGE	

JORDAN LIST OF MATERIAL E3037-21

MATERIAL: .064 THK ALUMINUM 5052-H32
 FINISH: 5404 YELLOW TRIDITE
 TITLE: THE TECHNICAL MATERIEL CORP. MAMARONECK, NEW YORK

BRACKET, MTG - P.A. SWITCH

1	TTR-10	A-3279
Q'TY./UNIT	MODEL USED ON	ASS'Y. NO.
SCALE	CODE	
	A	

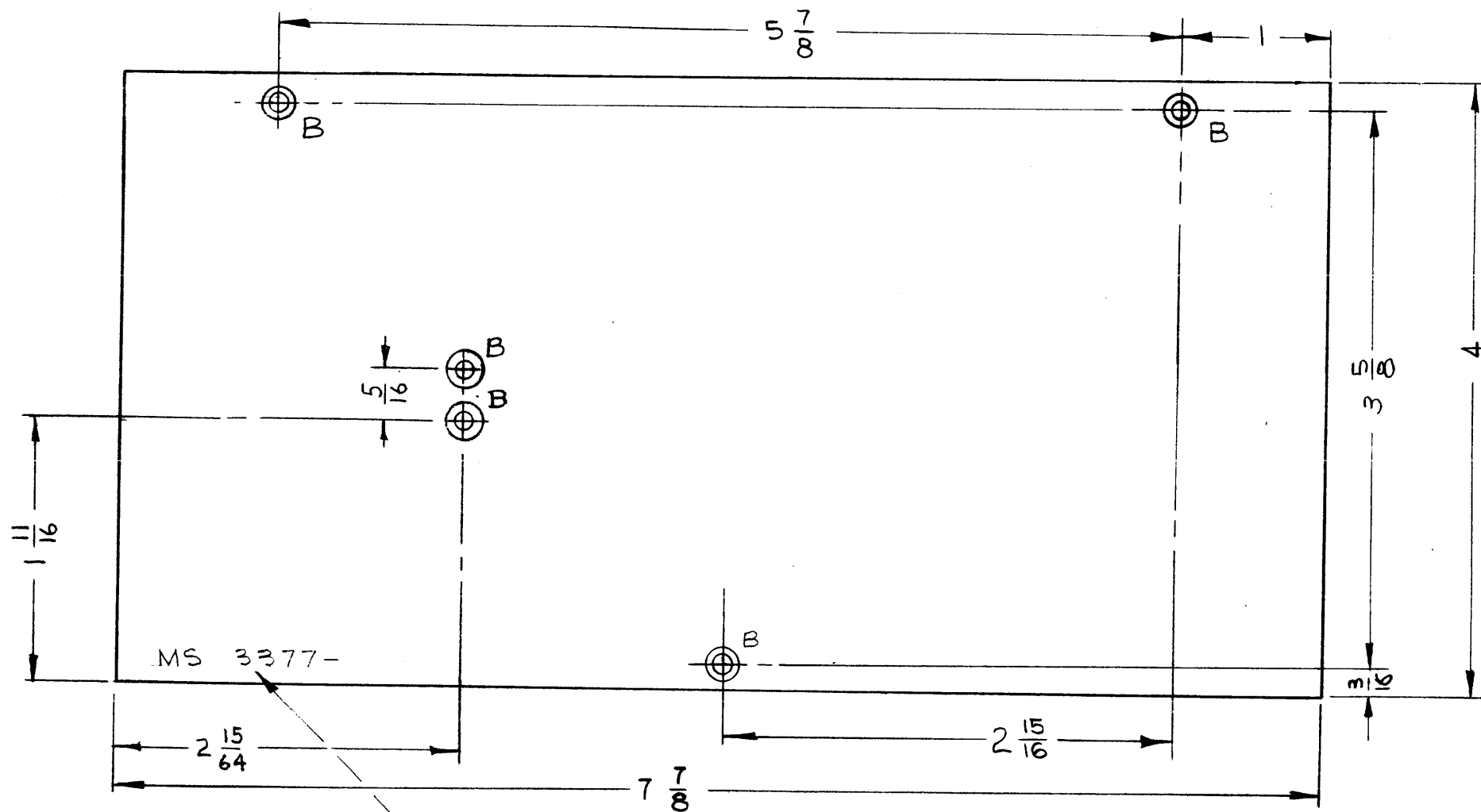
THE CONTENTS OF THIS DRAWING ARE THE EXCLUSIVE PROPERTY OF THE TECHNICAL MATERIEL CORP. ITS UNAUTHORIZED USE OR REPRODUCTION IN WHOLE OR IN PART IS STRICTLY FORBIDDEN.

UNLESS OTHERWISE SPECIFIED DIMENSIONS ARE IN INCHES AND INCLUDE CHEMICALLY APPLIED OR PLATED FINISHES	DRAWN: <i>[Signature]</i>	DATE: 5-17-63	FINAL APPROVAL: <i>[Signature]</i>	DATE:
DECIMALS: .X ± .05 .XX ± .01 .XXX ± .005	TOLERANCES	CHECKED: <i>[Signature]</i>	DATE: 5-23-63	
FRACTI NS: ± 1/64 ANGLES: ± 0° 30'		ELECT. DES: RKOHN	DATE: 1-16-64	MS-3376
		MECH. DES: W. JORDAN	DATE: 1/16/64	SHEET

NOTES

MS 3377 B

THE CONTENTS OF THIS DRAWING ARE THE EXCLUSIVE PROPERTY OF THE TECHNICAL MATERIEL CORP. ITS UNAUTHORIZED USE OR REPRODUCTION IN WHOLE OR IN PART IS STRICTLY FORBIDDEN.



HOLE LEGEND		
HOLE	DESCRIPTION	REQD
B	.120 DIA - CSK 82° X .230 D.	5

METAL STAMP TMC PART NO. 1/8 HIGH GOTHIC, WITH LATEST REVISION LETTER.

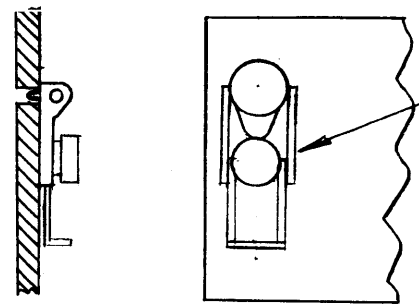
B	2 "B" HOLES ADDED.	3.3.65	13629	gk	gk	gk
A	2 "A" HOLES (80) CHANGED TO "B" HOLES DIM. 5 7/8 WAS 5 15/16, 1 WAS 1 5/16, 2 15/16 W. 3	5.21.64	11436	WB	gk	gk
SYM	DESCRIPTION	DATE	CH. NO.	DRAFTS	CHECKER	ENG. APP.

UNLESS OTHERWISE SPECIFIED:
DIMENSIONS ARE IN INCHES
TOLERANCES ON FRACTIONS ± 1/64 DECIMALS ± .05 ANGLES ± 1/2°

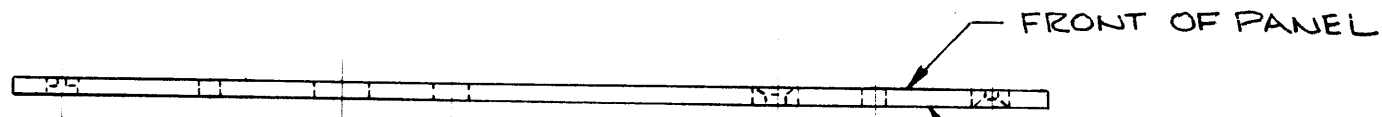
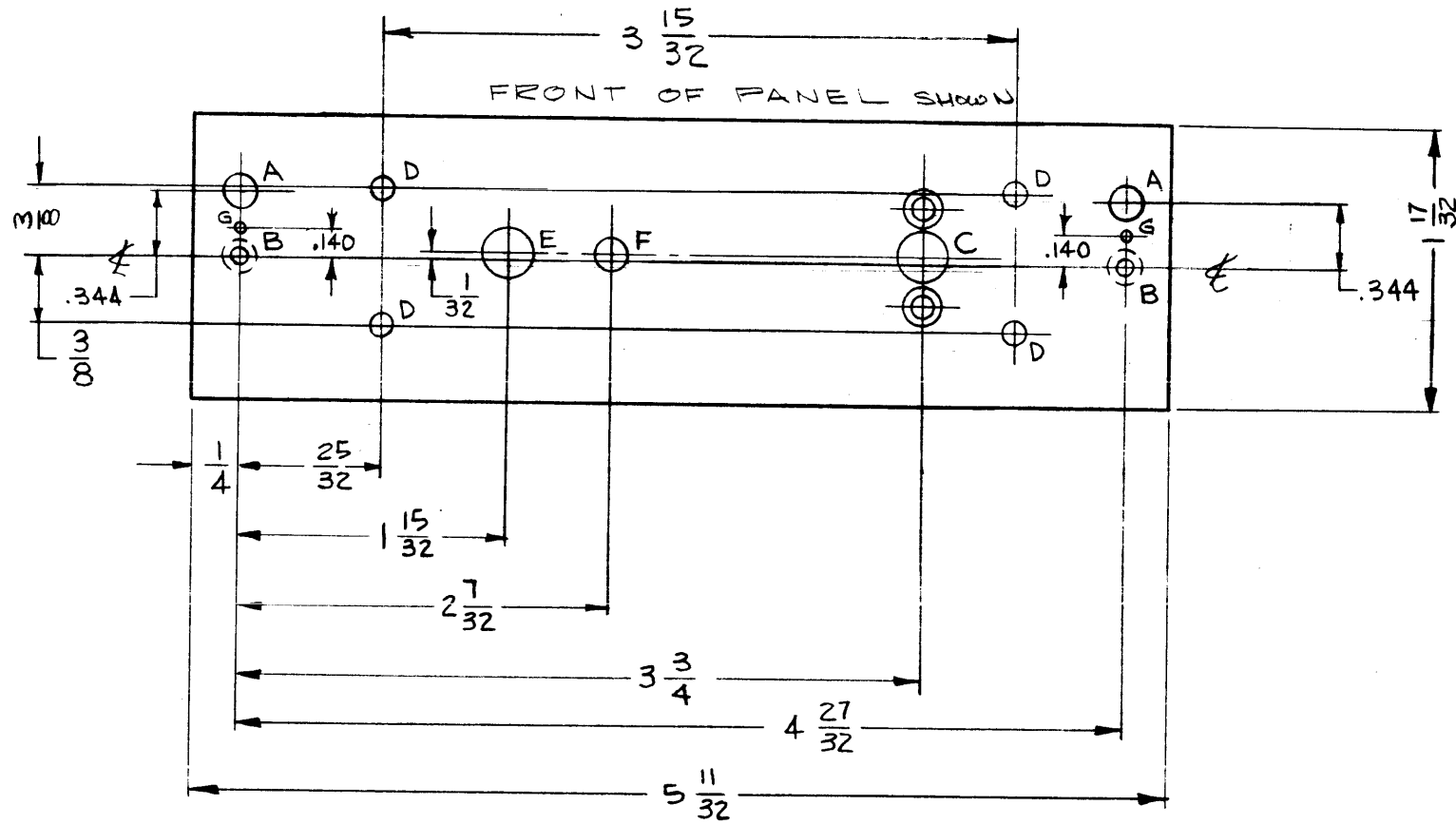
SCALE: # A
MAXIMUM ALLOWABLE TOLERANCES HAVE BEEN DETERMINED AND ANY DEVIATIONS WILL BE CAUSE FOR REJECTION.
REMOVE ALL BURRS AND SHARP EDGES

2	TTRT				
2	TTRR				
REQ. PER UNIT	MODEL	SECTION	ASS'Y. NO.	DATE	
					USED ON

REQ. ITEM	PART NO.	JORDAN	DESCRIPTION E3037-216	SYMBOL
.040 THK		THE TECHNICAL MATERIEL CORP.		
STOCK SIZE		MAMARONECK, NEW YORK		
ALUMINUM		PLATE, SIDE		
MATERIAL				
5052-H32		PLK	JDC 3/23/63	BP
TYPE & TEMPER	HEAT TREAT. SPEC.	DRAWN	CHECKED	FINAL APPROVAL
S404 YELLOW IRIDITE			W.A. Arnold	MS 3377 B
FINISH & SPEC. NO.	ELEC. DES. APP.	MECH. DES. APP.		

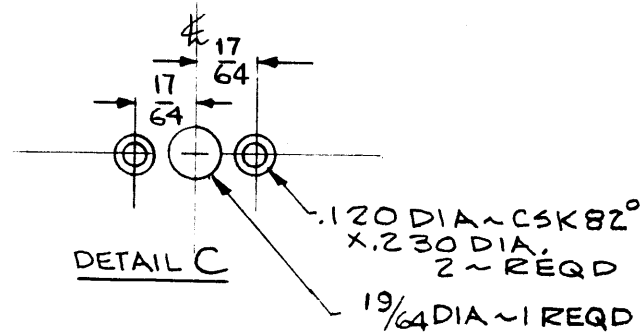


MOUNT ITEMS ① ② ③ ④ ON FRONT OF PANEL AS SHOWN USING "A" AND "B" HOLES



FRONT OF PANEL

METAL STAMP TMC PART NO. 1/8 HIGH GOTHIC ON REAR OF PANEL, WITH LATEST REV. LETTER.



NOTES

1	TTRR, 1, 2, 3, 4	
Q'TY./UNIT	MODEL USED ON	ASS'Y. NO.
SCALE 1:1	CODE A	
THE CONTENTS OF THIS DRAWING ARE THE EXCLUSIVE PROPERTY OF THE TECHNICAL MATERIEL CORP. ITS UNAUTHORIZED USE OR REPRODUCTION IN WHOLE OR IN PART IS STRICTLY FORBIDDEN.		

MS-3381 E

REVISIONS					
SYM	DESCRIPTION	DATE	E.M.N. NO.	DRAFT	CHKD
A	ITEM 4 WAS FS-120-2	7.13.64	11788	WB	JCS
B	"A" HOLE WAS .228 DIA., "G" HOLE ADDED IT. I WAS FS-119-1, IT. I CHANGED TO -2 ON PICT.	8.6.64	12072	WB	JCS
C	"A" HOLE DIA. WAS 13/64.	1.13.64	13275	9Z	JCS
D	DIM. 290 WAS 9/32 ON DETAIL "C"	8.5.65	14570	HV	JCS
E	DETAIL "C" 19/64 DIA WAS .290.	7/6/66	16491	JL	JCS

HOLE	DESCRIPTION	REQD
A	.228 DIA	2
B	.082 DIA C-BORE 3/16 DIA X.039 DEEP - REAR SIDE	2
C	SEE DETAIL	1
D	1/8 DIA	4
E	9/32 DIA	1
F	3/16 DIA	1
G	1/16 DIA	2

- ~ MACHINING ~
- 1 - LATERAL BOW OF PANEL MUST BE KEPT WITHIN 1/32.
 - 2 - MILL ALL EDGES.
 - 3 HOLES MUST BE DRILLED.
 - 4 - PANEL MUST BE FREE OF ALL MACHINING MARKS, GOUGES & SCRATCHES. IF NECESSARY, SAND FRONT OF PANEL WITH NO. 120 SANDPAPER.

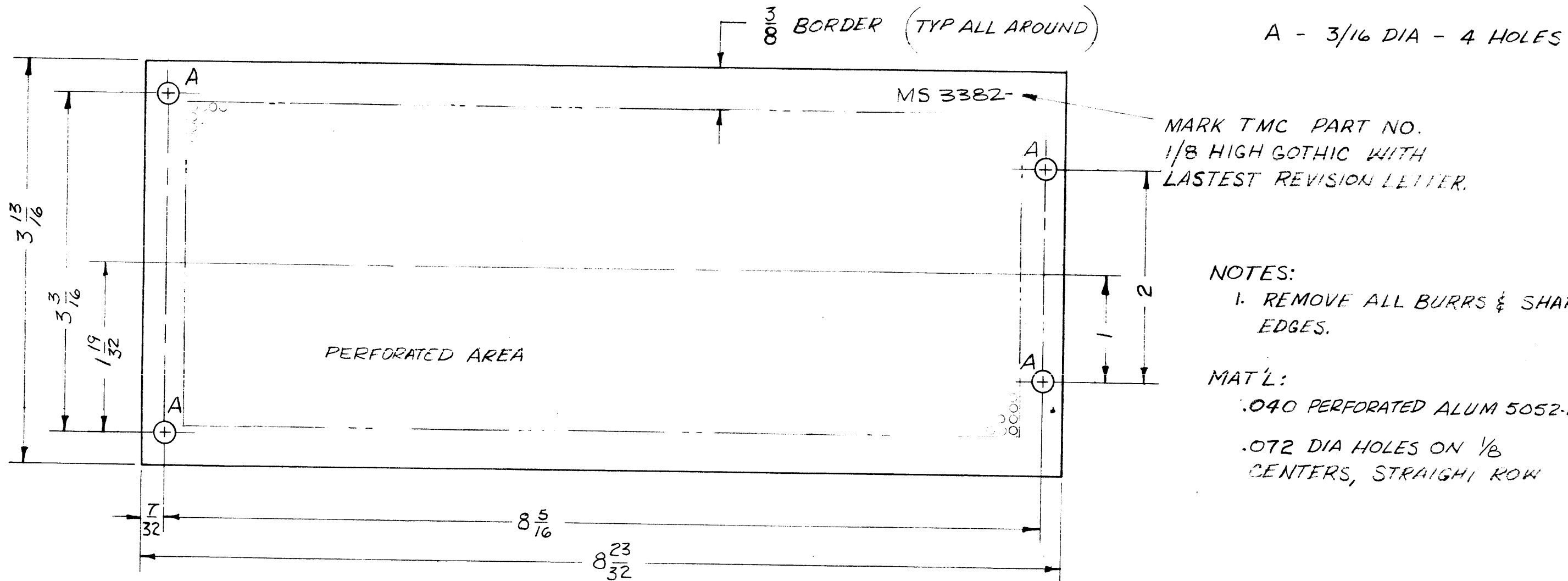
- ~ FINISH NOTES ~
- S404 - IRIDITE 14-2 AL-COAT
 - S114 - ZINC CHROMATE PRIMER
 - S115 - SMOOTH GREY ENAMEL
- FINISH ALL OVER

REF: LD-1332

REQ'D.	ITEM	PART NUMBER	DESCRIPTION	SYMBOL
2	4	FS-120-1	POST, SNAPSLIDE FASTENER	
4	3	WA-131-22	WASHER, SPRING TENSION	
2	2	FS-118-1	LATCH, SNAPSLIDE FASTENER	
2	1	FS-119-2	LATCH GUIDE SNAPSLIDE FASTENER	

JORDAN LIST OF MATERIAL E 8037-222			
MATERIAL .081THK. ALUMINUM 2024-T3		THE TECHNICAL MATERIEL CORP. MAMARONECK, NEW YORK	
FINISH SEE "FINISH NOTE"		TITLE PANEL, FRONT	
UNLESS OTHERWISE SPECIFIED DIMENSIONS ARE IN INCHES AND INCLUDE CHEMICALLY APPLIED OR PLATED FINISHES		DRAWN JCS	DATE 5-27-63
DECIMALS .X ± .05 .XX ± .01 .XXX ± .005		CHECKED JCS	DATE 5/23/63
FRACTIONS ± 1/64 ANGLES ± 0° 30'		ELECT. DES. W.A. PALMER	DATE 1/16/64
TOLERANCES		FINAL APPROVAL JCS	
		DATE 1/16/64	
		MS-3381	
		E	
		SHEET	
		REV. LTR.	

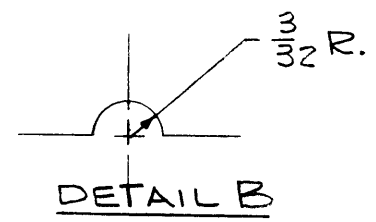
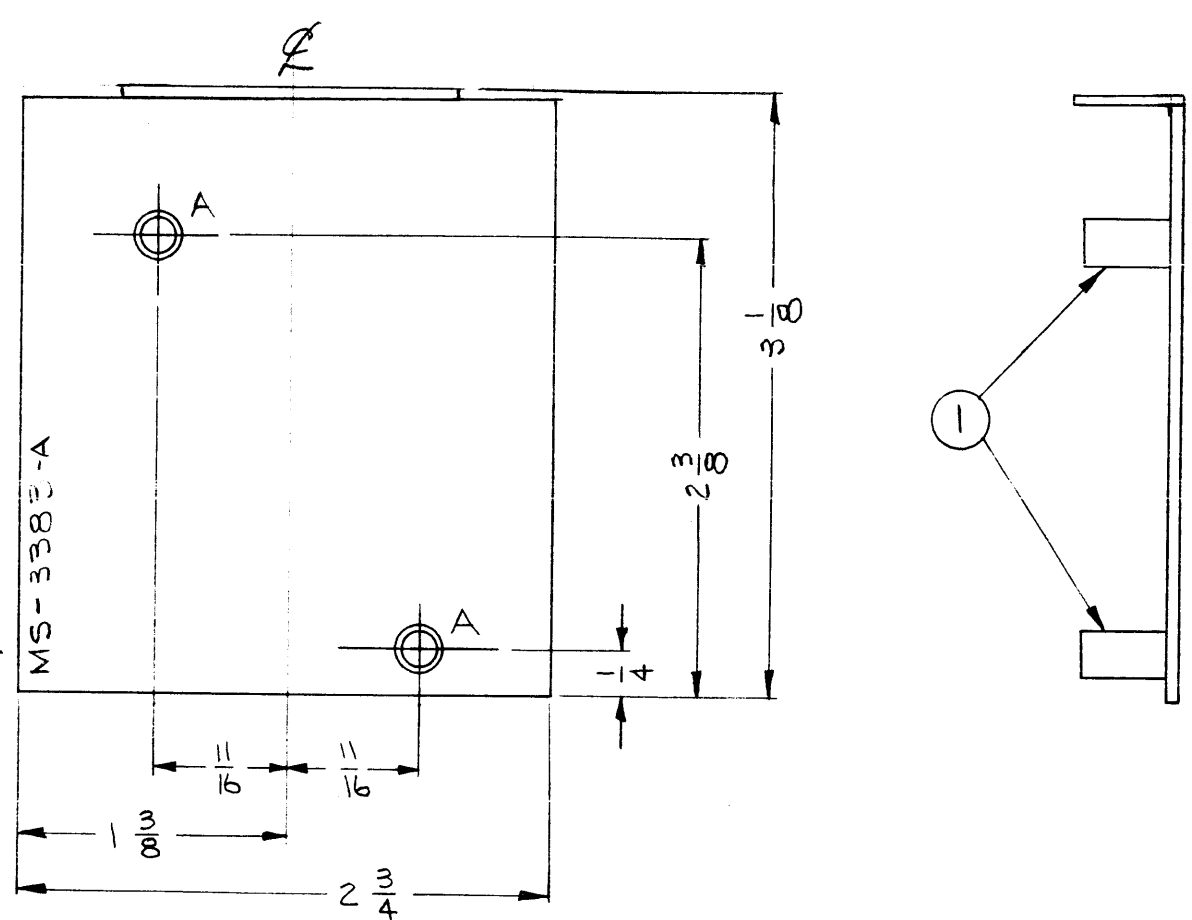
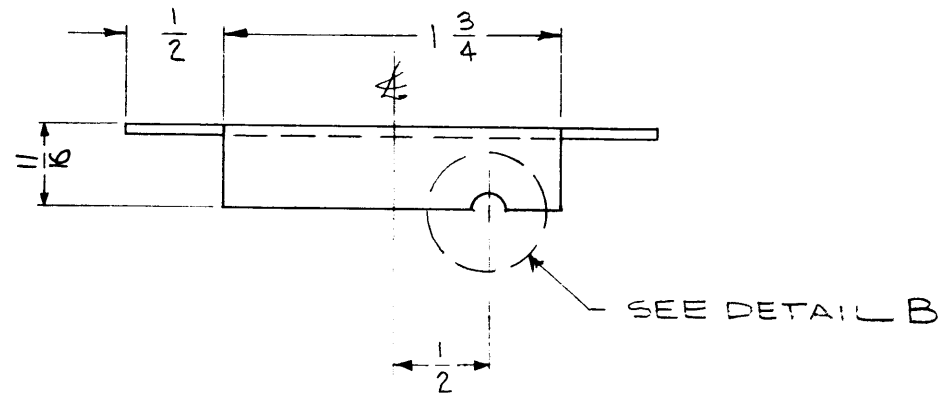
REVISIONS							
ZONE	LTR	DESCRIPTION	DATE	E.M.N.NO	DRAFT	CHKD	APPD
	A	REDRAWN W/NO REV. (ORIG LOST)	9-29-67	11685	EWJ	JCB	



REQ'D	ITEM	PART NUMBER	DESCRIPTION	SYM.
JORDAN LIST OF MATERIAL E3037-23				
THE TECHNICAL MATERIEL CORP. MAMARONECK, NEW YORK				
PLATE COVER				
SIZE	CODE IDENT. NO.	DWG NO.	ISSUE	
B	82679	MS 3382	A	
SCALE			SHEET OF	

UNLESS OTHERWISE SPECIFIED DIMENSIONS ARE IN INCHES AND INCLUDE CHEMICALLY APPLIED OR PLATED FINISHES			FINAL APPROVAL	BP	DATE	
			MECH. DES.	WJ	DATE	1-16-69
			ELECT. DES.	RK	DATE	1-16-69
			CHECKED	JDG	DATE	
			DRAWN	EWJ	DATE	9-29-67
MATERIAL			SEE NOTE			
FINISH			S404 YELLOW IRIDITE			

1	TTR-10	ASS'Y NO.
QTY / UNIT	MODEL USED ON	ASS'Y NO.
APPLICATION		
	CODE	S401-451
NOTICE TO PERSONS RECEIVING THIS DRAWING THE TECHNICAL MATERIEL CORPORATION claims proprietary right in the material disclosed hereon. This drawing is issued in confidence for engineering information only and may not be reproduced or used to manufacture anything shown hereon without permission from THE TECHNICAL MATERIEL CORPORATION to the user. This drawing is loaned for mutual assistance and is subject to recall at any time.		



MS-3383 A

REVISIONS					
SYM	DESCRIPTION	DATE	E.M.N. NO.	DRAFT	CHKD APED
A	1/16 DIM. WAS 9/16 (TOP VIEW), ITEM 1 WAS TE108-19	6/17/64	11608	A.M.	<i>[Signature]</i>

A ~ .189 DIA ~ 2 REQD.

- NOTES:
1. USE MAT'L THICKNESS FOR MAX. RADIUS ON ALL BENDS.
 2. ALL BENDS 90°
 3. REMOVE ALL BURRS & SHARP EDGES.
 4. MOUNT ITEM #1 IN ALL "A" HOLES AS SHOWN AFTER FINISHING.

2	1	TE-108-20	STANDOFF, RIVET TYPE	
REQ'D.	ITEM	PART NUMBER	DESCRIPTION	SYMBOL
KOHN LIST OF MATERIAL E3037-47				
MATERIAL .051 THK. ALUMINUM 5052 - H32			THE TECHNICAL MATERIEL CORP. MAMARONECK, NEW YORK	
FINISH S404 YELLOW IRIDITE			TITLE PLATE, COVER	
UNLESS OTHERWISE SPECIFIED DIMENSIONS ARE IN INCHES AND INCLUDE CHEMICALLY APPLIED OR PLATED FINISHES		DRAWN <i>[Signature]</i>	DATE 5/23/63	FINAL APPROVAL <i>[Signature]</i>
		CHECKED <i>[Signature]</i>	DATE 5/23/63	
		ELECT. DES. RKOHN	DATE 1-16-64	MS-3383
		MECH. DES. W. JORDAN	DATE 1/16/64	A
			SHEET	REV. LTR.

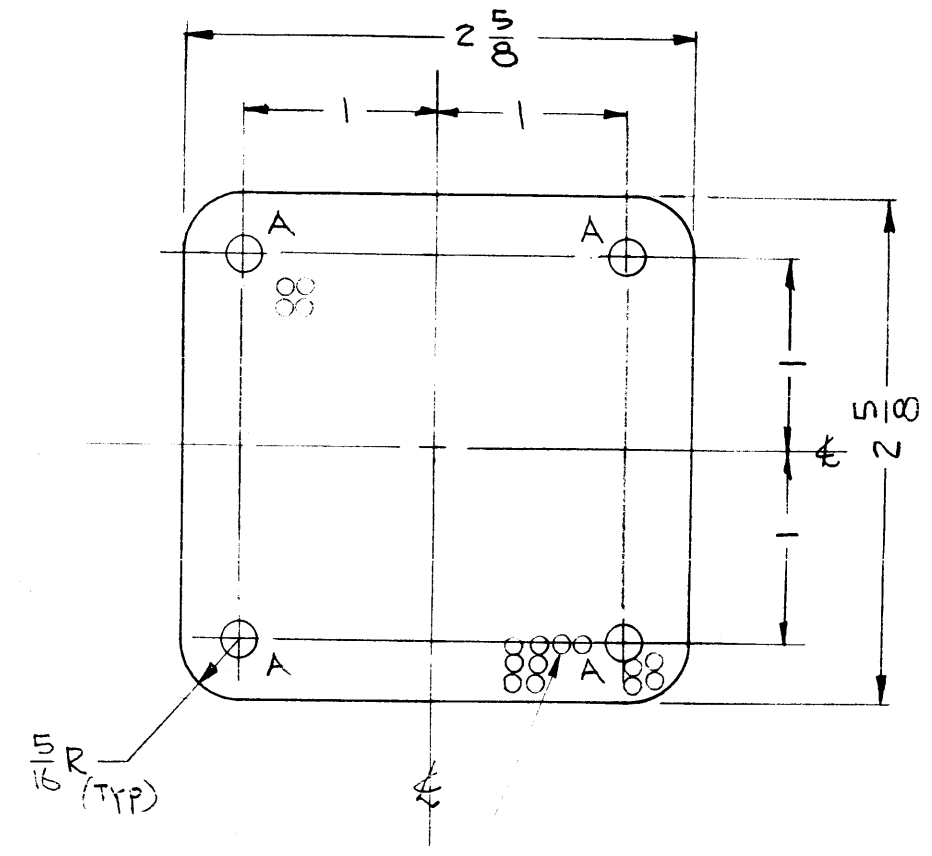
1	TTR-10	AX-418
QTY./UNIT	MODEL USED ON	ASSY. NO.
SCALE <i>[Signature]</i>	CODE A	
THE CONTENTS OF THIS DRAWING ARE THE EXCLUSIVE PROPERTY OF THE TECHNICAL MATERIEL CORP. ITS UNAUTHORIZED USE OR REPRODUCTION IN WHOLE OR IN PART IS STRICTLY FORBIDDEN.		

NOTES

MS-3384 A

REVISIONS

SYM	DESCRIPTION	DATE	E.M.N. NO.	DRAFT	CHKD	APPD
A	ON PERFORATION NOTE HOLES WERE .050 DIA	7.13.64	11685	WJB	<i>[Signature]</i>	<i>[Signature]</i>
B	CHG. STRAIGHT ROW TO OPTIONAL PATTERN	8.21.63	19555	GE	<i>[Signature]</i>	OP



A ~ 3/16 DIA ~ 4 HOLES

.072 DIA. HOLES ON 1/8 CENTERS (OPTIONAL PATTERN)

NOTE:
1. REMOVE ALL BURRS & SHARP EDGES.

REQ'D.	ITEM	PART NUMBER	DESCRIPTION	SYMBOL
JORDAN LIST OF MATERIAL E 3037-22				
MATERIAL		THE TECHNICAL MATERIEL CORP.		
.040 PERFORATED ALUM 5052-H32		MAMARONECK, NEW YORK		
FINISH		TITLE		
S404 YELLOW IRIDITE S115 TMC GRAY ENAMEL		GRILLE, SPEAKER		
UNLESS OTHERWISE SPECIFIED DIMENSIONS ARE IN INCHES AND INCLUDE CHEMICALLY APPLIED OR PLATED FINISHES		DRAWN <i>[Signature]</i>	DATE 5-23-63	FINAL APPROVAL <i>[Signature]</i>
		CHECKED <i>[Signature]</i>	DATE 5-23-63	
		ELECT. DES. RKOHN	DATE 1-16-64	MS-3384 B
		MECH. DES. W. JORDAN	DATE 1/16/64	
			SHEET	REV. LTR.

1	TTR-10	A-2786
Q'TY./UNIT	MODEL USED ON	ASS'Y. NO.
SCALE <i>[Signature]</i>	CODE A	
THE CONTENTS OF THIS DRAWING ARE THE EXCLUSIVE PROPERTY OF THE TECHNICAL MATERIEL CORP. ITS UNAUTHORIZED USE OR REPRODUCTION IN WHOLE OR IN PART IS STRICTLY FORBIDDEN.		

NOTES

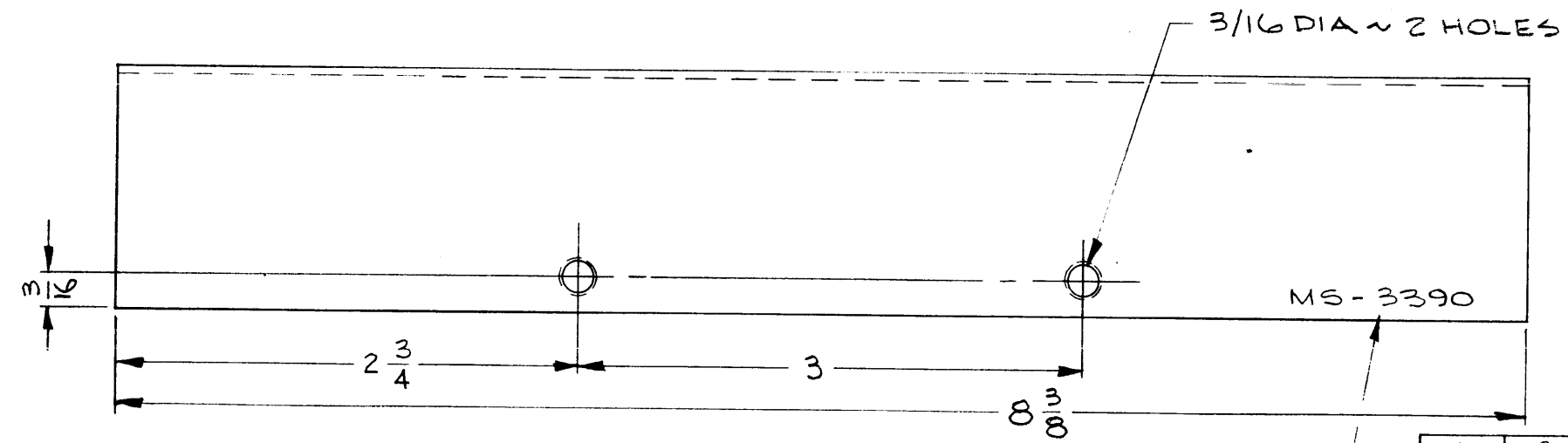
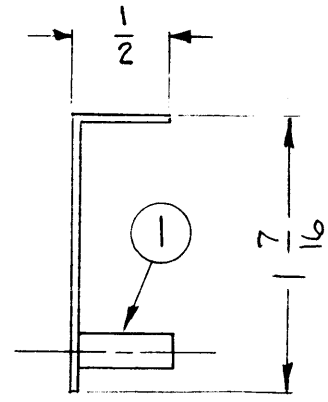
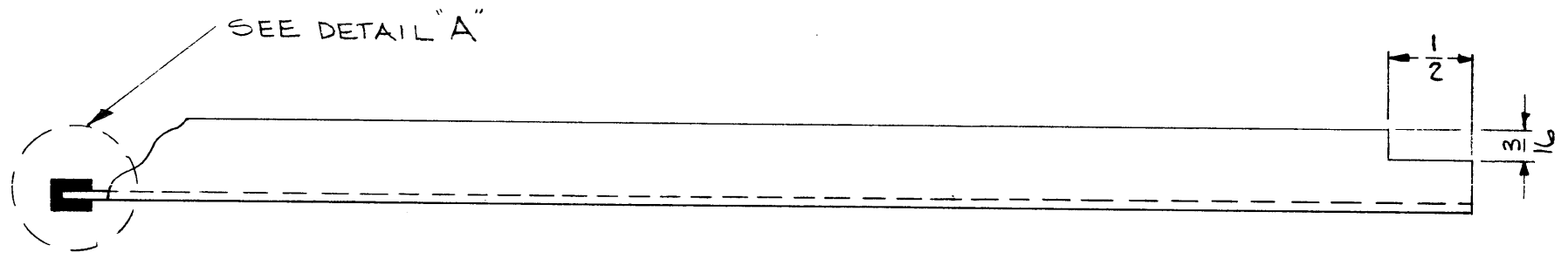
MS-3390

REVISIONS

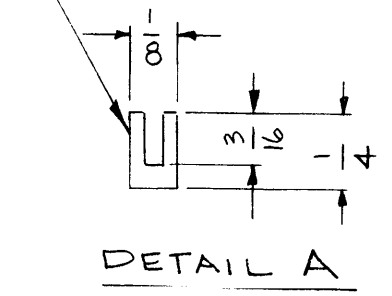
SYM	DESCRIPTION	DATE	E.M.N. NO.	DRAFT	CHKD	APPD
-----	-------------	------	------------	-------	------	------

NOTES:

1. USE MAT'L THICKNESS FOR MAX. RADIUS ON ALL BENDS.
2. BEND 90°
3. MOUNT ITEM # 1 AS SHOWN AFTER FINISHING.



2 1 3/8 LG. TO BE APPLIED AS SHOWN AFTER FINISH



METAL STAMP TMC PART NO. 1/8 HIGH GOTHIC

REQ'D.	ITEM	PART NUMBER	DESCRIPTION	SYMBOL
1	2	RY-140-1	GASKET, BLACK NEOPRENE	
2	1	TE-108-11	STANDOFF, SWAGE TYPE	

JORDAN LIST OF MATERIAL E 3037-84

MATERIAL .051 THK ALUMINUM 5052-H32	THE TECHNICAL MATERIEL CORP. MAMARONECK, NEW YORK
FINISH S404 YELLOW IRIDITE	TITLE DUCT, CABLE - LEFT

1	TTR-10	AX-418
Q'TY./UNIT	MODEL USED ON	ASS'Y. NO.
SCALE	CODE	
	A	

UNLESS OTHERWISE SPECIFIED DIMENSIONS ARE IN INCHES AND INCLUDE CHEMICALLY APPLIED OR PLATED FINISHES	DRAWN	DATE	FINAL APPROVAL	DATE
	CHECKED	DATE		
	ELECT. DES.	DATE		
	MECH. DES.	DATE		
DECIMALS .X ± .05 .XX ± .01 .XXX ± .005	TOLERANCES	FRACTIONS ± 1/64 ANGLES ± 0° 30'	MS-3390	
			SHEET	REV. LTR.

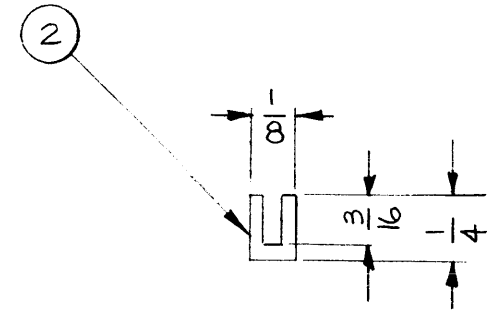
NOTES

THE CONTENTS OF THIS DRAWING ARE THE EXCLUSIVE PROPERTY OF THE TECHNICAL MATERIEL CORP. ITS UNAUTHORIZED USE OR REPRODUCTION IN WHOLE OR IN PART IS STRICTLY FORBIDDEN.

REVISIONS

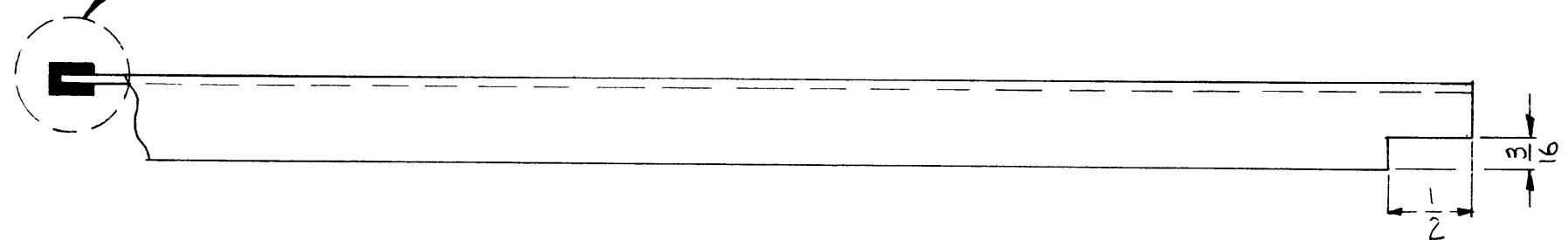
SYM	DESCRIPTION	DATE	E.M.N. NO.	DRAFT	CHKD	APPD
-----	-------------	------	------------	-------	------	------

MS-3391

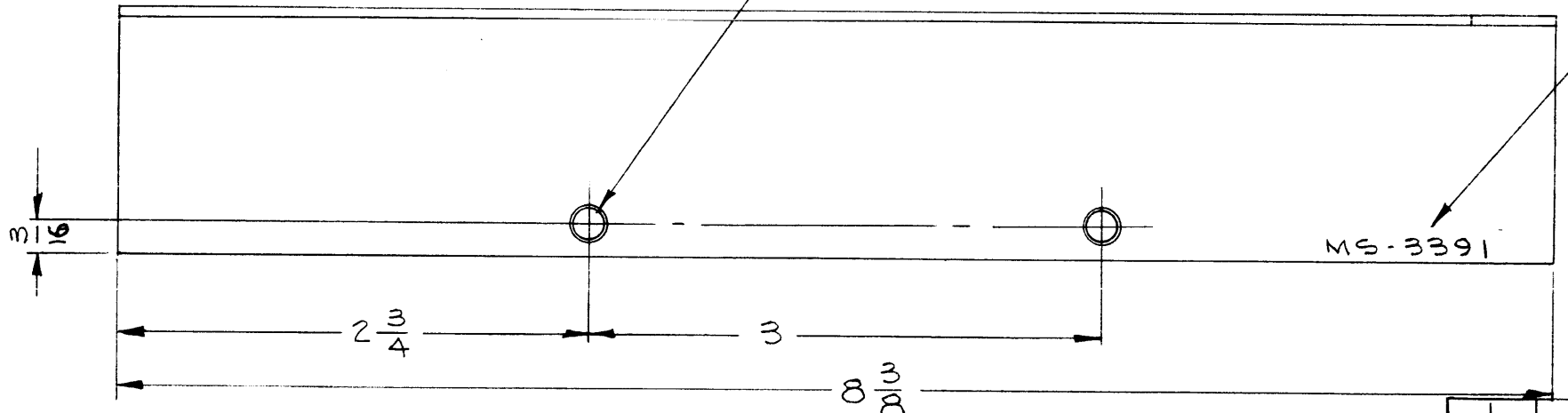


1 3/8 LG. TO BE APPLIED AS SHOWN AFTER FINISH

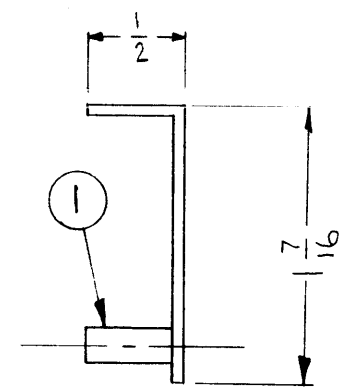
SEE DETAIL "A"



3/16 DIA ~ 2 HOLES



METAL STAMP TMC PART NO. 1/8 HIGH GOTHIC.



REQ'D.	ITEM	PART NUMBER	DESCRIPTION	SYMBOL
1	2	RY-140-1	GASKET, BLACK NEOPRENE	
2	1	TE-108-11	STANDOFF, SWAGE TYPE	

JORDAN LIST OF MATERIAL E3037-85

MATERIAL .051 THK. ALUM.	THE TECHNICAL MATERIEL CORP. MAMARONECK, NEW YORK		
FINISH S404 YELLOW IRIDITE	TITLE DUCT, CABLE ~ RIGHT		

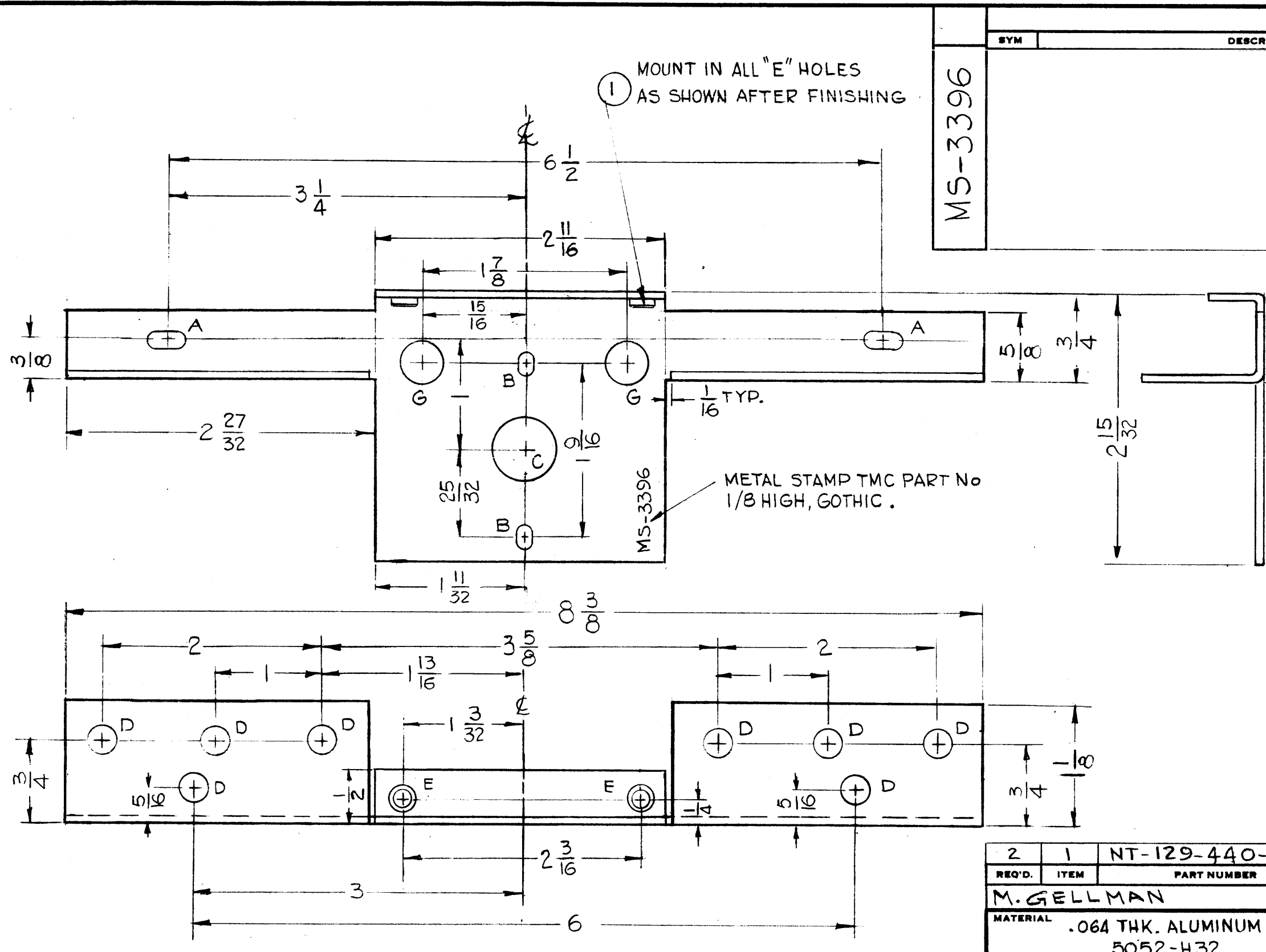
1	TTR-10	AX-418
Q'TY./UNIT	MODEL USED ON	ASS'Y. NO.
SCALE	CODE	
#	A	

THE CONTENTS OF THIS DRAWING ARE THE EXCLUSIVE PROPERTY OF THE TECHNICAL MATERIEL CORP. ITS UNAUTHORIZED USE OR REPRODUCTION IN WHOLE OR IN PART IS STRICTLY FORBIDDEN.

UNLESS OTHERWISE SPECIFIED DIMENSIONS ARE IN INCHES AND INCLUDE CHEMICALLY APPLIED OR PLATED FINISHES	DRAWN <i>[Signature]</i>	DATE 5-25-63	FINAL APPROVAL <i>[Signature]</i>	DATE
	CHECKED <i>[Signature]</i>	DATE 5-25-63		
DECIMALS .X ± .05 .XX ± .01 .XXX ± .005	TOLERANCES	FRACTIONS ± 1/64 ANGLES ± 0° 30'	ELECT. DES. RKOHN	DATE 1-16-64
		MECH. DES. W. JORDAN	DATE 1/16/64	MS-3391

- AFTER FINISHING.
1. USE MAT'L THICKNESS FOR MAX. RADIUS ON BEND.
 2. BEND 90°.
 3. REMOVE ALL BURRS & SHARP EDGES.
 4. MOUNT ITEM #1 AS SHOWN

NOTES



REVISIONS						
SYM	DESCRIPTION	DATE	E.M.N. NO.	DRAFT	CHKD	APPD
MS-3396						

HOLE	DESCRIPTION	REQ'D
A	11/64 x 11/32 SLOT	2
B	1/8 x 3/16 SLOT	2
C	9/16 DIA.	1
D	1/4 DIA.	8
E	.164 - .161 DIA.	2
G	3/8 DIA.	2

~ UNLESS OTHERWISE SPECIFIED ~
 1 - USE MATERIAL THICKNESS FOR MAX RADIUS ON ALL BENDS
 2 - ALL BENDS 90°
 3 - DEBURR ALL EDGES

NOTES

1	GRR-92	
Q'TY./UNIT	MODEL USED ON	ASS'Y. NO.
SCALE	CODE	
FULL		

THE CONTENTS OF THIS DRAWING ARE THE EXCLUSIVE PROPERTY OF THE TECHNICAL MATERIEL CORP. ITS UNAUTHORIZED USE OR REPRODUCTION IN WHOLE OR IN PART IS STRICTLY FORBIDDEN.

2	1	NT-129-440-4	NUT, ROUND, SWAGE TYPE	E
REQ'D.	ITEM	PART NUMBER	DESCRIPTION	SYMBOL

M. GELLMAN LIST OF MATERIAL

MATERIAL .064 THK. ALUMINUM 5052-H32
 THE TECHNICAL MATERIEL CORP. MAMARONECK, NEW YORK

FINISH 5404 IRIDITE 14-2 AL COAT
 TITLE BRACKET, COIL

UNLESS OTHERWISE SPECIFIED DIMENSIONS ARE IN INCHES AND INCLUDE CHEMICALLY APPLIED OR PLATED FINISHES		DRAWN G.D.L	DATE 5-9-63	FINAL APPROVAL <i>BP</i>	DATE
DECIMALS X ± .05 .XX ± .01 .XXX ± .005	TOLERANCES	CHECKED <i>[Signature]</i>	DATE 9/24/63	MS-3396	
FRACTIONS ± 1/64 ANGLES ± 0° 30'		ELECT. DES. <i>[Signature]</i>	DATE		
		MECH. DES. <i>[Signature]</i>	DATE 9-24-63		