

THE CONTENTS OF THIS DRAWING ARE THE EXCLUSIVE PROPERTY OF THE TECHNICAL MATERIEL CORP. ITS UNAUTHORIZED USE FOR REPRODUCTION IN WHOLE OR IN PART IS STRICTLY FORBIDDEN.

REQ. PER UNIT

USED ON

MODEL

ASS'Y. NO.

DATE

2

GPT-200K

AX-397

7-13-63

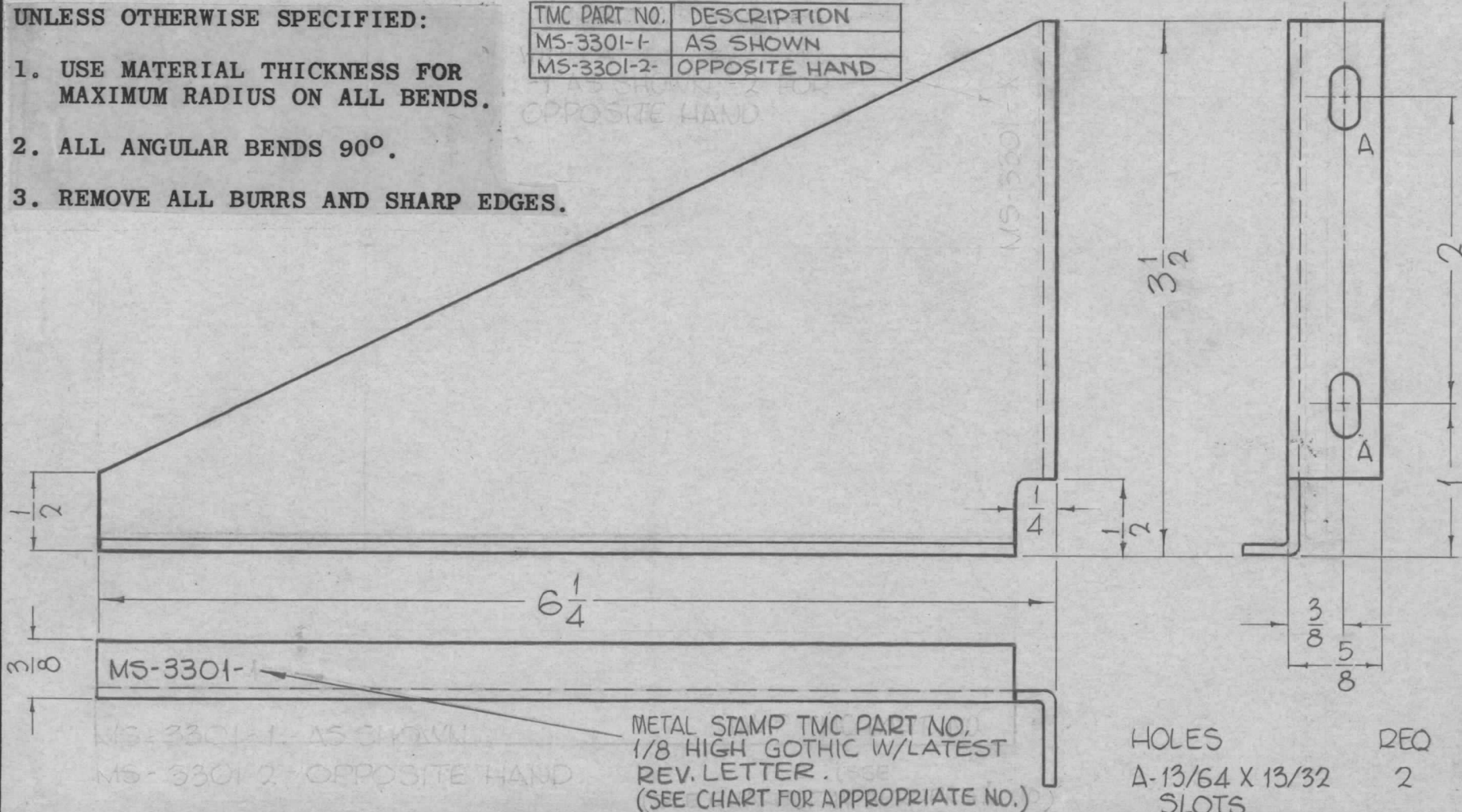
MS-3301

○

UNLESS OTHERWISE SPECIFIED:

1. USE MATERIAL THICKNESS FOR MAXIMUM RADIUS ON ALL BENDS.
2. ALL ANGULAR BENDS 90°.
3. REMOVE ALL BURRS AND SHARP EDGES.

TMC PART NO.	DESCRIPTION
MS-3301-1	AS SHOWN
MS-3301-2	OPPOSITE HAND



SYM	DESCRIPTION	DATE	CH. NO.	DRAFTS	CHECKER	ENG. APP.	REQ. ITEM	PART NO.	F. BUDETTI	DESCRIPTION	SYMBOL		
							.081 THICK			THE TECHNICAL MATERIEL CORP.			
							STOCK SIZE			MAMARONECK, NEW YORK			
○	ORIGINAL RELEASE FOR PRODUCTION	5/27/64	○	A.M.			ALUMINUM			BRACKET, CHASSIS SUPPORT			
							MATERIAL						
	UNLESS OTHERWISE SPECIFIED DIMENSIONS ARE IN INCHES AND INCLUDE CHEMICALLY APPLIED OR PLATED FINISHES	SCALE	1" = 1"				5052, H-32		John C. Biele	aa	RJE		
							TYPE & TEMPER	HEAT TREAT. SPEC.	DRAWN	CHECKED	FINAL APPROVAL		
	DECIMALS .X ± .05 .XX ± .01 .XXX ± .005	TOLERANCES	FRACTIONS ± 1/64 ANGLES ± 0° 30'	CODE	A							MS-3301	○
							FINISH & SPEC. NO.		ELEC. DES. APP.	MECH. DES. APP.			

THE CONTENTS OF THIS DRAWING ARE THE EXCLUSIVE PROPERTY OF THE TECHNICAL MATERIEL CORP. ITS UNAUTHORIZED USE FOR REPRODUCTION IN WHOLE OR IN PART IS STRICTLY FORBIDDEN.

REQ. PER UNIT

USED ON

MODEL

ASS'Y. NO.

DATE

2

GPT-200K

AZ-101

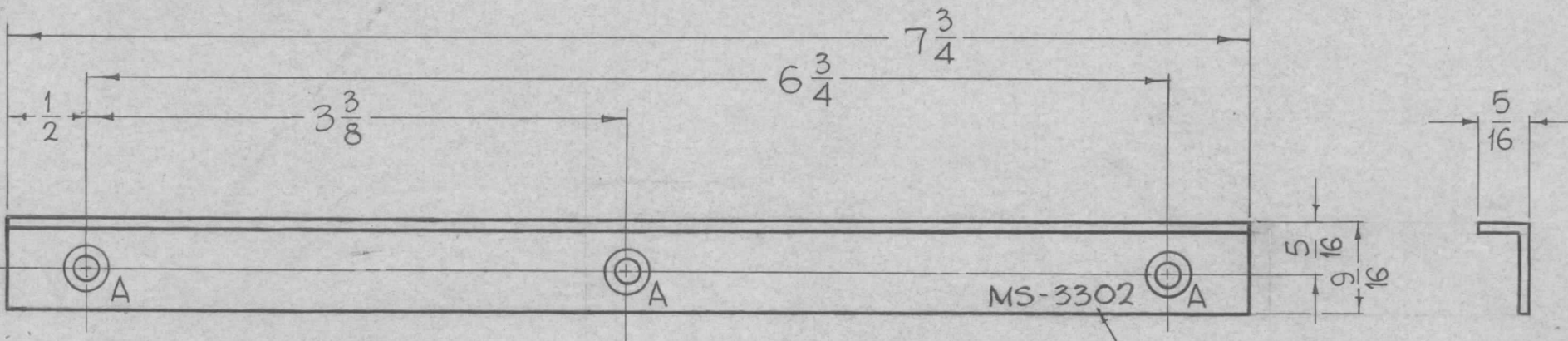
7-13-63

MS-3302

A

HOLES REQ

A-.144 DIA. C'SK 82° 3
TO .284 DIA.



- UNLESS OTHERWISE SPECIFIED:
1. USE MATERIAL THICKNESS FOR MAXIMUM RADIUS ON ALL BENDS.
 2. ALL ANGULAR BENDS 90°.
 3. REMOVE ALL BURRS AND SHARP EDGES.

METAL STAMP TMC PART NO. 1/8 HIGH GOTHIC. W/LATEST REV. LETTER

							REQ. ITEM	PART NO.	BUDETTI	DESCRIPTION	SYMBOL	
							.064 THICK		THE TECHNICAL MATERIEL CORP. MAMARONECK, NEW YORK			
							STOCK SIZE		BRACKET, CHASSIS MTG.			
							ALUMINUM					
							MATERIAL					
SYM	DESCRIPTION	DATE	CH. NO.	DRAFTS	CHECKER	ENG. APP.						
A	A' HOLES WERE 1/64	7/29/65	14560	dw	JCB							
O	ORIGINAL RELEASE FOR PRODUCTION	4/6/64										
UNLESS OTHERWISE SPECIFIED DIMENSIONS ARE IN INCHES AND INCLUDE CHEMICALLY APPLIED OR PLATED FINISHES		SCALE										
		1" = 1"										
DECIMALS .X ± .05 .XX ± .01 .XXX ± .005		FRACTIONS ± 1/64 ANGLES ± 0° 30'		CODE A								
TOLERANCES						TYPE & TEMPER		HEAT TREAT. SPEC.		DRAWN		
						S404-IRIDITE, 14-2AL-COAT				CHECKED		
										FINAL APPROVAL		
										MS-3302 A		
						FINISH & SPEC. NO.		ELEC. DES. APP.		MECH. DES. APP.		

THE CONTENTS OF THIS DRAWING ARE THE EXCLUSIVE PROPERTY OF THE TECHNICAL MATERIEL CORP. ITS UNAUTHORIZED USE FOR REPRODUCTION IN WHOLE OR IN PART IS STRICTLY FORBIDDEN.

REQ. PER UNIT

USED ON

MODEL

ASS'Y. NO.

DATE

1

GPT-200K

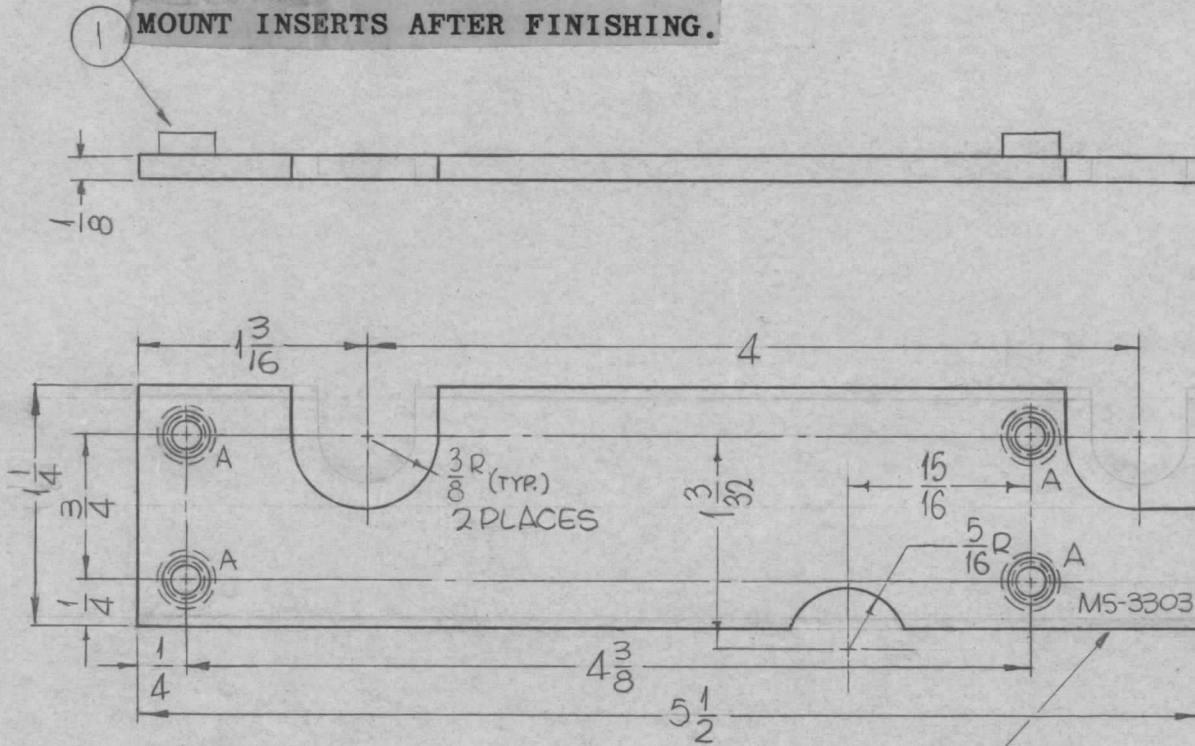
AT-105

7-11-63

MS-3303



1 MOUNT INSERTS AFTER FINISHING.



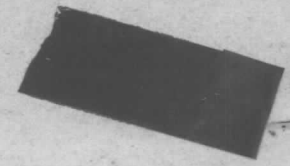
HOLES:

A ~ .250-.253 DIA. (4 REQ.)

METAL STAMP TMC PART NO. 1/8 HIGH GOTHIC. W/LATEST REVISION LETTER

4	1	NT-129-1032-6	NUT, ROUND, SWAGE TYPE		
REQ.	ITEM	PART NO.	F. BUDETTI	DESCRIPTION	SYMBOL
		1/8 THICK	THE TECHNICAL MATERIEL CORP. MAMARONECK, NEW YORK		
		ALUMINUM	PLATE, SHIELD MTG. LEFT		
		MATERIAL			
		5052-H32	SRG	aa	RAC
		TYPE & TEMPER	DRAWN		CHECKED
		5404 YELLOW TRIDITE	OJB		MS-3303
		HEAT TREAT. SPEC.	MECH. DES. APP.		
		FINISH & SPEC. NO.	ELEC. DES. APP.		

0	ORIGINAL RELEASE FOR PRODUCTION	5-13-64	0	A.M.			
X2	5/16 R NOTCH ADDED	1-27-64					
SYM	DESCRIPTION	DATE	CH. NO.	DRAFTS	CHECKER	ENG. APP.	
UNLESS OTHERWISE SPECIFIED DIMENSIONS ARE IN INCHES AND INCLUDE CHEMICALLY APPLIED OR PLATED FINISHES		SCALE		1"=1"			
DECIMALS	FRACTIONS	CODE	1"=1"				
.X ± .05	± 1/64	A					
.XX ± .01	ANGLES						
.XXX ± .005	± 0° 30'						
TOLERANCES							



THE CONTENTS OF THIS DRAWING ARE THE EXCLUSIVE PROPERTY OF THE TECHNICAL MATERIEL CORP. ITS UNAUTHORIZED USE FOR REPRODUCTION IN WHOLE OR IN PART IS STRICTLY FORBIDDEN.

REQ. PER UNIT

USED ON

MODEL

ASS'Y. NO.

DATE

1

GPT-200K

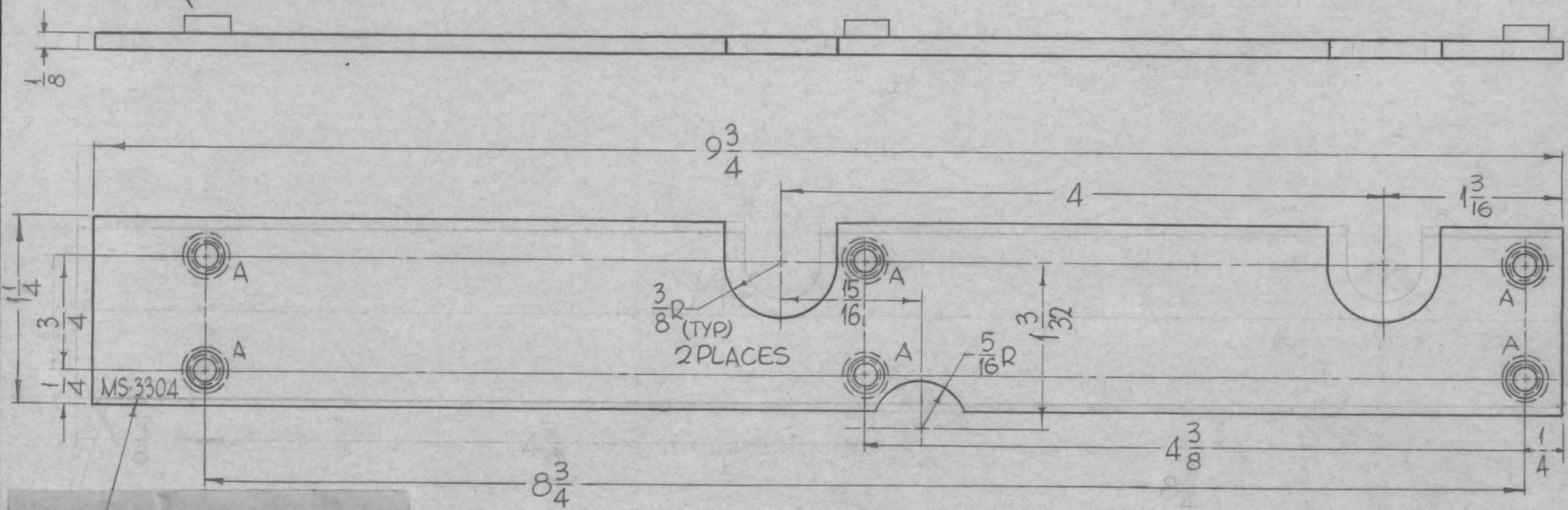
AT-105

7-11-63

MS-3304



1 MOUNT INSERTS AFTER FINISHING.



METAL STAMP TMC PART NO. 1/8 HIGH GOTHIC. W/LATEST REVISION LETTER

HOLES:
A ~ .250-.253 DIA. (6 REQ.)

6	1	NT-129-1032-6	NUT, ROUND SWAGE TYPE	
REQ. ITEM	PART NO.	F. BUDETTI	DESCRIPTION	SYMBOL
	1/8 THICK	THE TECHNICAL MATERIEL CORP. MAMARONECK, NEW YORK		
	ALUMINUM	PLATE, SHIELD MTG. RIGHT		
	5052-H32	SRG	aa	RDC
	TYPE & TEMPER	HEAT TREAT. SPEC.	DRAWN	CHECKED
	5-A04 YELLOW IRIDITE			
	FINISH & SPEC. NO.	ELEC. DES. APP.	MECH. DES. APP.	MS-3304

0	ORIGINAL RELEASE FOR PRODUCTION	5-13-64	0	A.M.		
X2	5/16 R NOTCH ADDED	1-27-64				
SYM	DESCRIPTION	DATE	CH. NO.	DRAFTS	CHECKER	ENG. APP.
UNLESS OTHERWISE SPECIFIED DIMENSIONS ARE IN INCHES AND INCLUDE CHEMICALLY APPLIED OR PLATED FINISHES		SCALE 1"=1"				
DECIMALS .X ± .05 .XX ± .01 .XXX ± .005	TOLERANCES	FRACTIONS ± 1/64 ANGLES ± 0° 30'	CODE A			

THE CONTENTS OF THIS DRAWING ARE THE EXCLUSIVE PROPERTY OF THE TECHNICAL MATERIEL CORP. ITS UNAUTHORIZED USE FOR REPRODUCTION IN WHOLE OR IN PART IS STRICTLY FORBIDDEN.

REQ. PER UNIT

1 TER-25K-600B

USED ON

MODEL

ASS'Y. NO.

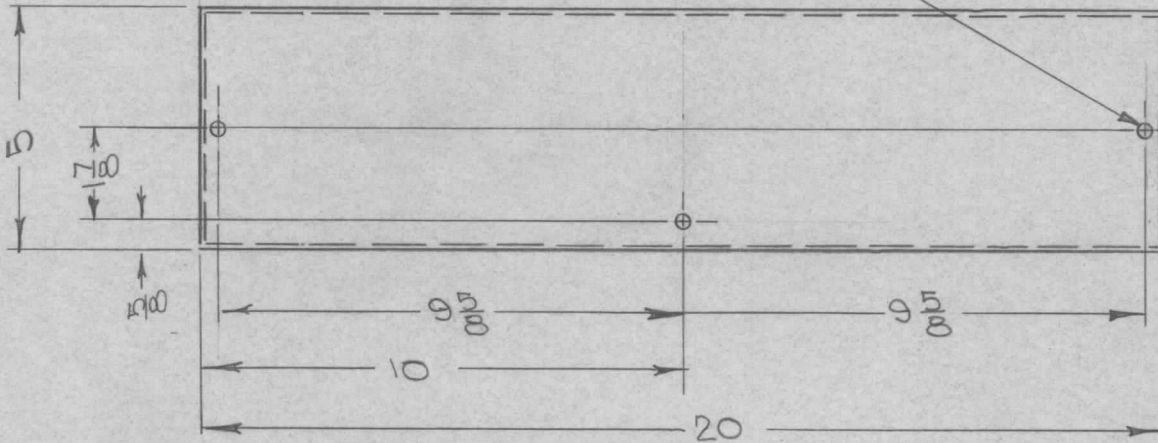
DATE

8-2-63

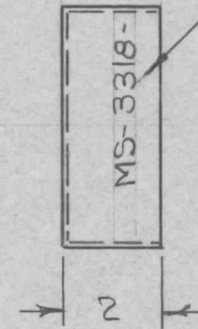
MS-3318

Ø

$\frac{15}{64}$ DIA-3HOLES



METAL STAMP TMC PART NO. 1/8 HIGH GOTHIC. W/LATEST REV. LETTER.



UNLESS OTHERWISE SPECIFIED:

1. USE MATERIAL THICKNESS FOR MAXIMUM RADIUS ON ALL BENDS.
2. ALL ANGULAR BENDS 90°.
3. REMOVE ALL BURRS AND SHARP EDGES.

REQ.	ITEM	PART NO.	F. BUDETTI DESCRIPTION				SYMBOL	
		18 GA.	THE TECHNICAL MATERIEL CORP.					
		STOCK SIZE	MAMARONECK, NEW YORK					
Ø	ORIGINAL RELEASE FOR PRODUCTION	6-9-65	MA	JC	BOX, FILLER, SIDE			
SYM	DESCRIPTION	DATE	CH. NO.	DRAFTS	CHECKER	ENG. APP.		
UNLESS OTHERWISE SPECIFIED DIMENSIONS ARE IN INCHES AND INCLUDE CHEMICALLY APPLIED OR PLATED FINISHES		SCALE	1:2					
DECIMALS	TOLERANCES	FRACTIONS	CODE	COPPER FLASH				
.X ± .05		± 1/64		DRAWN				
.XX ± .01		ANGLES		CHECKED				
.XXX ± .005		± 0° 30'		FINAL APPROVAL				
				ELEC. DES. APP.				
				MECH. DES. APP.				
				MS-3318				Ø

THE CONTENTS OF THIS DRAWING ARE THE EXCLUSIVE PROPERTY OF THE TECHNICAL MATERIEL CORP. ITS UNAUTHORIZED USE FOR REPRODUCTION IN WHOLE OR IN PART IS STRICTLY FORBIDDEN.

REQ. PER UNIT

USED ON

MODEL

ASS'Y. NO.

DATE

1

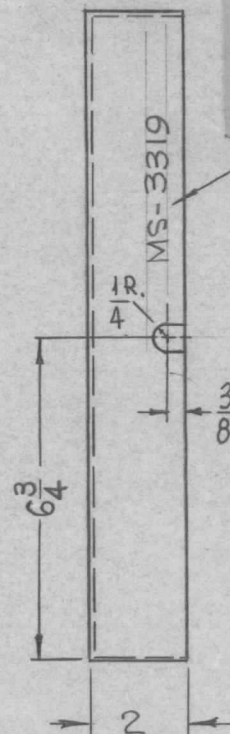
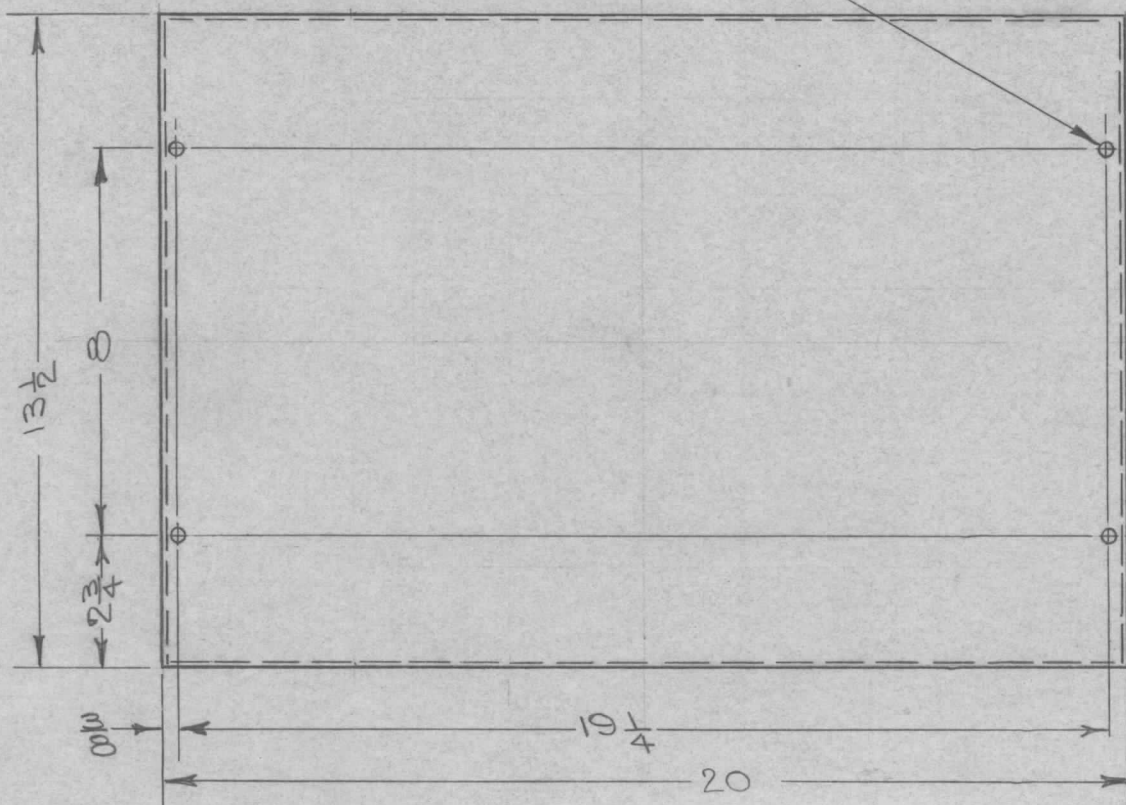
TER-25K-600B

8-2-63

MS-3319

Ø

$\frac{15}{64}$ DIA - 4 HOLES



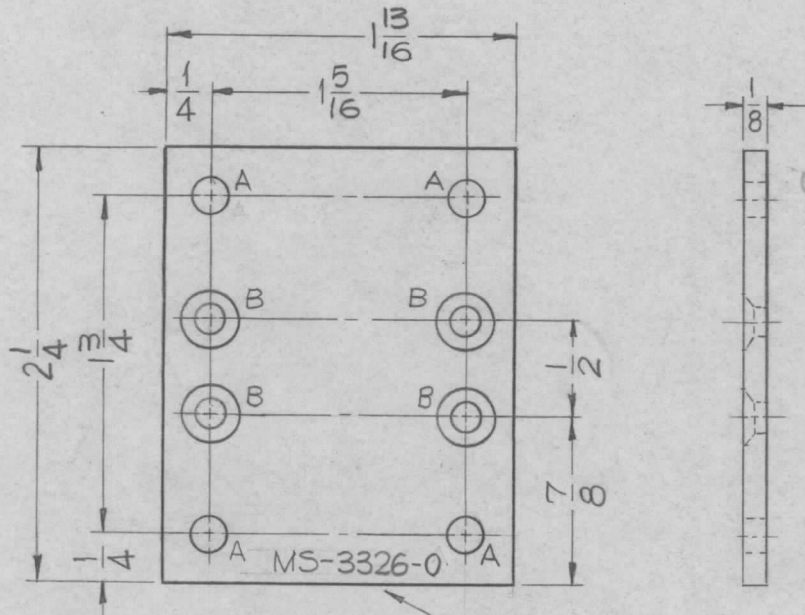
METAL STAMP TMC PART NO. 1/8 HIGH GOTHIC. W/LATEST REV. LETTER

UNLESS OTHERWISE SPECIFIED:

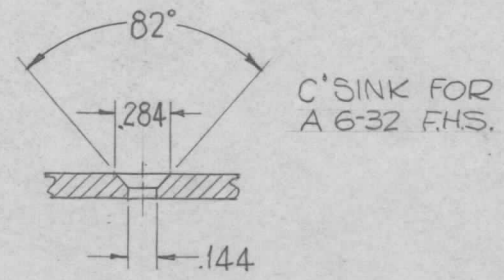
1. USE MATERIAL THICKNESS FOR MAXIMUM RADIUS ON ALL BENDS.
2. ALL ANGULAR BENDS 90°.
3. REMOVE ALL BURRS AND SHARP EDGES.

							REQ. ITEM	PART NO.	F. BUDETTI	DESCRIPTION	SYMBOL	
							18 GA		THE TECHNICAL MATERIEL CORP. MAMARONECK, NEW YORK			
							STEEL		BOX, FILLER, CENTER			
Ø	ORIGINAL RELEASE FOR PRODUCTION	69-65	M	JC								
X ₁	GROMMET SLOT ADDED	12-30-64	X ₁	SRG								
SYM	DESCRIPTION	DATE	CH. NO.	DRAFTS	CHECKER	ENG. APP.						
UNLESS OTHERWISE SPECIFIED DIMENSIONS ARE IN INCHES AND INCLUDE CHEMICALLY APPLIED OR PLATED FINISHES		SCALE 1:4										
DECIMALS .X ± .05 .XX ± .01 .XXX ± .005		FRACTIONS ± 1/64 ANGLES ± 0° 30'		CODE A								
							TYPE & TEMPER	HEAT TREAT. SPEC.	DRAWN	CHECKED	FINAL APPROVAL	
							COPPER FLASH					
							FINISH & SPEC. NO.	ELEC. DES. APP.	MECH. DES. APP.	MS-3319 Ø		

REQ. PER UNIT	USED ON			MS-3326	0
	MODEL	ASS'Y. NO.	DATE		
3	GPT-200K	AR-137	8-23-63		
4	GPT-200K	AR-138	8-23-63		



HOLES:
A - 11/64 DIA. — 4REQ.



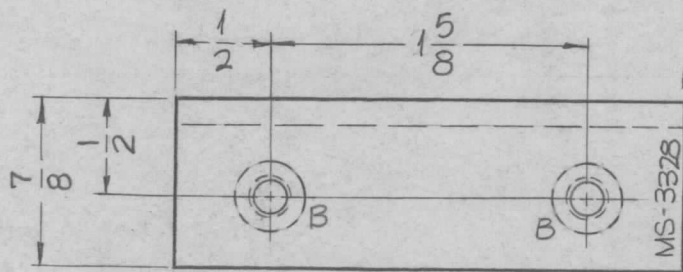
B-DETAIL
(4REQ.)

METAL STAMP TMC PART NO.
1/8 HIGH GOTHIC.

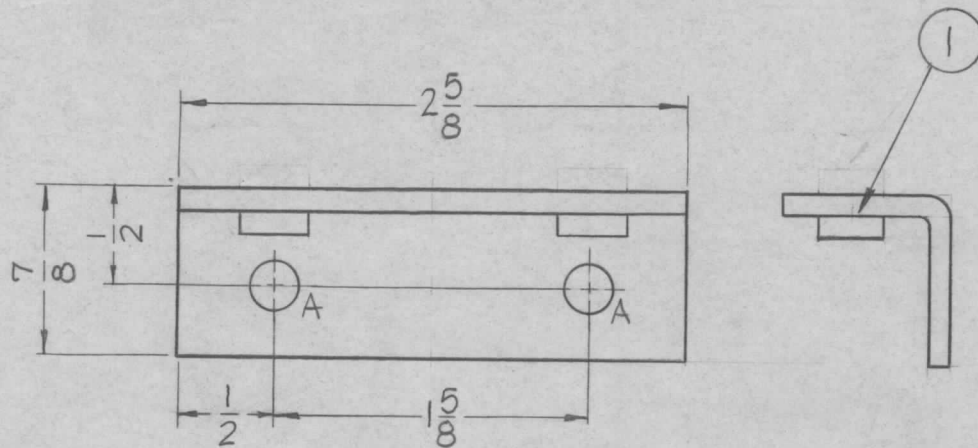
							REQ. ITEM	PART NO.	F. BUDETTI	DESCRIPTION	SYMBOL	
								1/8 THICK	THE TECHNICAL MATERIEL CORP. MAMARONECK, NEW YORK			
								STOCK SIZE	PLATE, RELAY MTG.			
								ALUMINUM				
								MATERIAL				
								5052-H32	SRG	aa	Roc	
								TYPE & TEMPER	HEAT TREAT. SPEC.	DRAWN	CHECKED	FINAL APPROVAL
								5404 YELLOW IRIDITE		DBLB	mc 2/1/64	MS-3326 0
								FINISH & SPEC. NO.	ELEC. DES. APP.	MECH. DES. APP.		
UNLESS OTHERWISE SPECIFIED DIMENSIONS ARE IN INCHES AND INCLUDE CHEMICALLY APPLIED OR PLATED FINISHES		SCALE	1" = 1"									
DECIMALS .X ± .05 .XX ± .01 .XXX ± .005		TOLERANCES		FRACTIONS ± 1/64 ANGLES ± 0° 30'		CODE						
				A								

REQ. PER UNIT	USED ON			MS-3328 0
	MODEL	ASS'Y. NO.	DATE	
2	GPT-200K AX-395	A-3163	8-23-63	

METAL STAMP TMC PART NO.
1/8 HIGH GOTHIC.



HOLES	DESCRIPTION	REQ.
A	15/64 DIA.	2
B	.221-.224 DIA.	2



UNLESS OTHERWISE SPECIFIED:

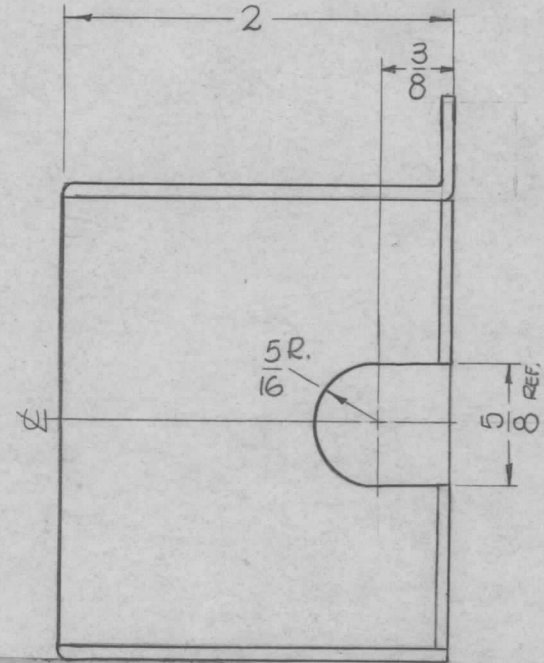
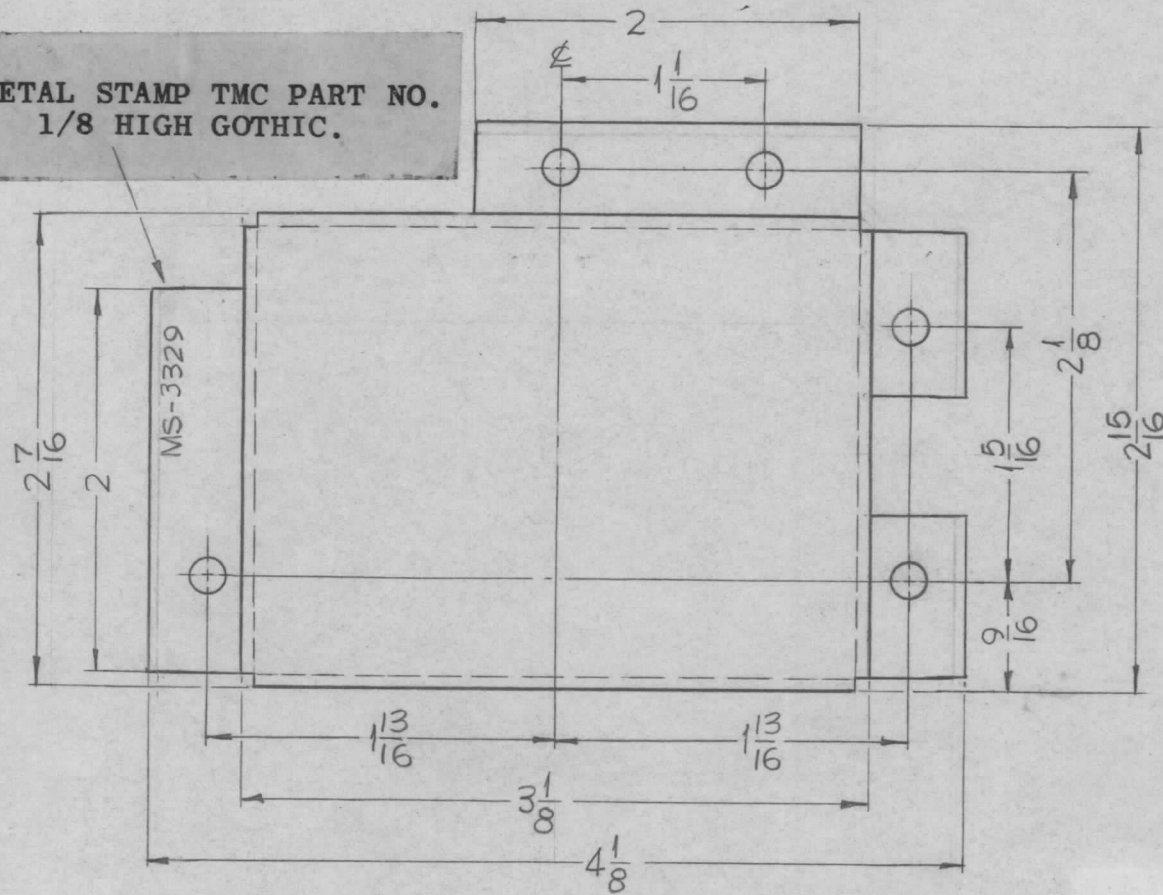
1. USE MATERIAL THICKNESS FOR MAXIMUM RADIUS ON ALL BENDS.
2. ALL ANGULAR BENDS 90°.
3. REMOVE ALL BURRS AND SHARP EDGES.
4. MOUNT INSERTS AFTER FINISHING.

2	1	NT-129-832-6	NUT ROUND, SWAGE TYPE			
REQ. ITEM	PART NO.		DESCRIPTION			SYMBOL
	1/8 THICK		THE TECHNICAL MATERIEL CORP.			
	STOCK SIZE		MAMARONECK, NEW YORK			
0	ORIGINAL RELEASE	5.16.64	15B	BRACKET, SUPPORT COIL		
SYM	DESCRIPTION	DATE	CH. NO.	DRAFTS	CHECKER	ENG. APP.
UNLESS OTHERWISE SPECIFIED DIMENSIONS ARE IN INCHES AND INCLUDE CHEMICALLY APPLIED OR PLATED FINISHES		SCALE	1" = 1"			
DECIMALS	TOLERANCES	FRACTIONS	CODE			
.X ± .05		± 1/64				
.XX ± .01		ANGLES				
.XXX ± .005		± 0° 30'				
5052-H32		TYPE & TEMPER		HEAT TREAT. SPEC.	DRAWN	CHECKED
S404 YELLOW IRIDITE					SRG	aa
FINISH & SPEC. NO.		ELEC. DES. APP.		MECH. DES. APP.	FINAL APPROVAL	
					MS-3328 0	

HOLES~
3/16 DIA. (5 REQ.)

REQ. PER UNIT	USED ON			MS-3329	0
	MODEL	ASS'Y. NO.	DATE		
1	GPT-200K	AX-395	8-23-63		

METAL STAMP TMC PART NO.
1/8 HIGH GOTHIC.



REF: LD-1280

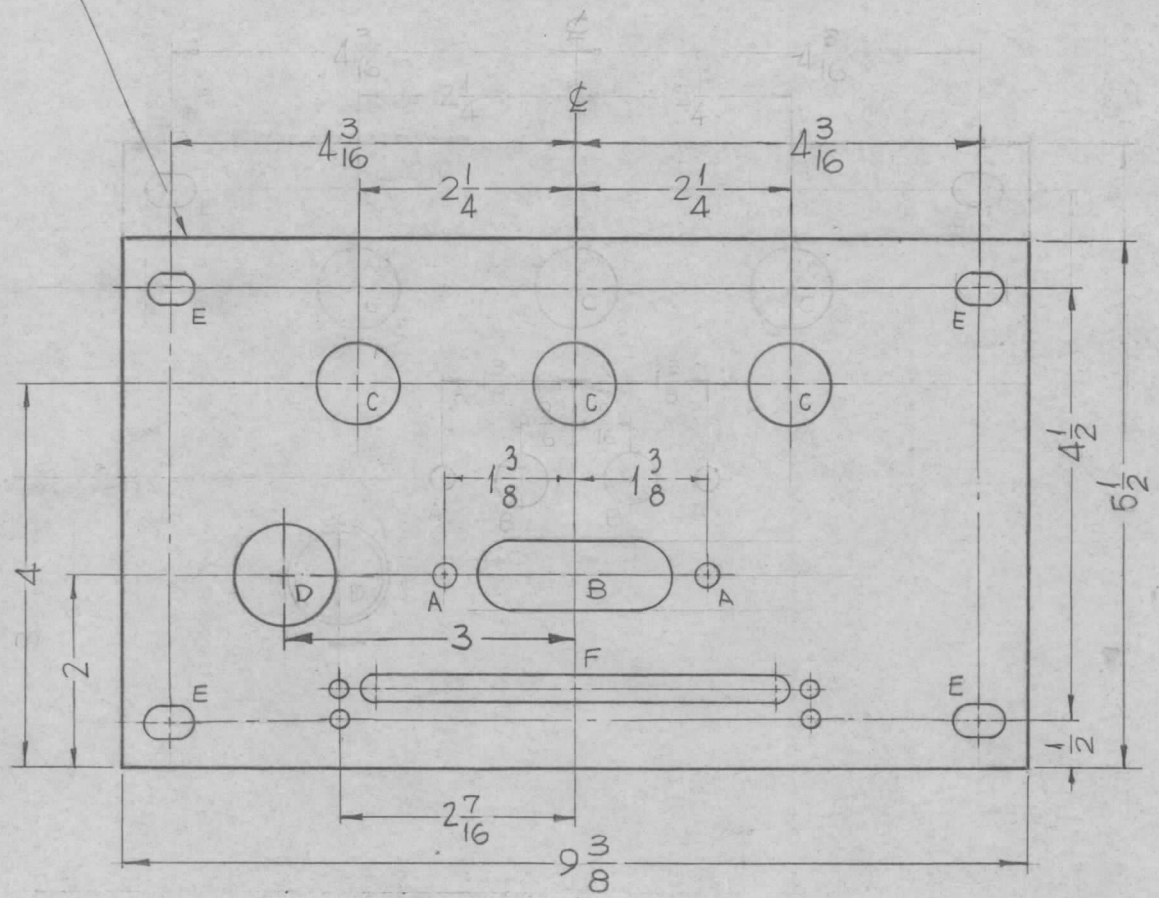
- UNLESS OTHERWISE SPECIFIED:
1. USE MATERIAL THICKNESS FOR MAXIMUM RADIUS ON ALL BENDS.
 2. ALL ANGULAR BENDS 90°.
 3. REMOVE ALL BURRS AND SHARP EDGES.

						REQ. ITEM	PART NO.	F. BUDETTI	DESCRIPTION	SYMBOL	
							.064		THE TECHNICAL MATERIEL CORP.		
							STOCK SIZE		MAMARONECK.	NEW YORK	
0	ORIGINAL RELEASE	5.16.64		JRS			ALUMINUM		SHIELD, CONNECTOR		
SYM	DESCRIPTION	DATE	CH. NO.	DRAFTS	CHECKER	ENG. APP.	MATERIAL				
UNLESS OTHERWISE SPECIFIED DIMENSIONS ARE IN INCHES AND INCLUDE CHEMICALLY APPLIED OR PLATED FINISHES		SCALE	1" = 1"				5052-H32	SRG	aa	RJC	
DECIMALS .X ± .05 .XX ± .01 .XXX ± .005	TOLERANCES	FRACTIONS ± 1/64 ANGLES ± 0° 30'	CODE				TYPE & TEMPER	HEAT TREAT. SPEC.	DRAWN	CHECKED	FINAL APPROVAL
							S404 YELLOW IRIDITE		2P	ac 2/1/64	MS-3329 0
							FINISH & SPEC. NO.	ELEC. DES. APP.	MECH. DES. APP.		

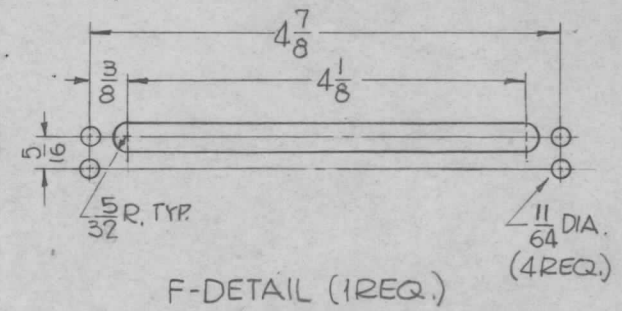
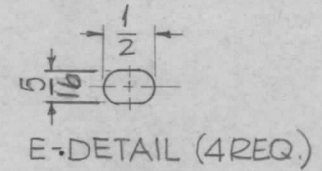
METAL STAMP TMC PART NO WITH LATEST REVISION
 1/8 HIGH GOTHIC.
 ON REAR OF PLATE

REQ. PER UNIT	USED ON		
	MODEL	ASS'Y. NO.	DATE
1	GPT-200K	AX-395	8-26-63

MS-3330 C



- HOLES:
- A - 15/64 DIA. ——— 2 REQ.
 - B - 3/4 X 2 SLOT ——— 1 REQ.
 - C - 13/16 DIA. ——— 3 REQ.
 - D - 13/8 DIA. ——— 1 REQ.

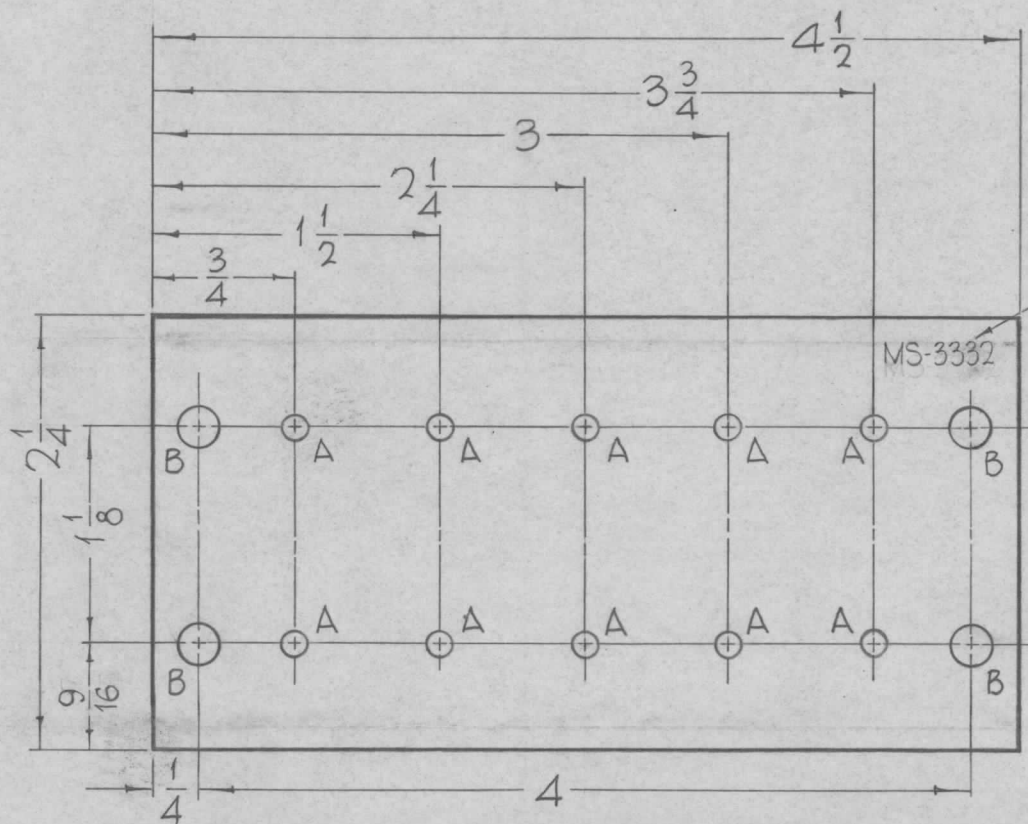


REF: LD-1281

C	ON E' DETAIL: 5/16 WPS 5/64	3.24.65	13771	RL	JCB	REQ. ITEM	PART NO.	F-BUDETTI	DESCRIPTION	SYMBOL	
B	CLERICAL CHANGE	10.1.64		9L	@	1/8 THICK		THE TECHNICAL MATERIEL CORP.			
A	D-HOLE WAS 7/8 DIA D-HOLE RELOC., DIMS UPDATED	8.13.64	12109	WB	NO.	STOCK SIZE		MAMARONECK. NEW YORK			
O	ORIGINAL RELEASE FOR PRODUCTION	5/26/64	O	A.M.		ALUMINUM		PLATE, CAPACITOR MTG.			
SYM	DESCRIPTION	DATE	CH. NO.	DRAFTS	CHECKER	ENG. APP.	MATERIAL				
UNLESS OTHERWISE SPECIFIED DIMENSIONS ARE IN INCHES AND INCLUDE CHEMICALLY APPLIED OR PLATED FINISHES		SCALE					5052-H32	SRG	aa	Roc	
		1/2					TYPE & TEMPER	HEAT TREAT. SPEC.	DRAWN	CHECKED	FINAL APPROVAL
DECIMALS .X ± .05 .XX ± .01 .XXX ± .005		FRACTIONS ± 1/64 ANGLES ± 0° 30'		CODE A			S404 YELLOW IRIDITE				
TOLERANCES					FINISH & SPEC. NO.		ELEC. DES. APP.	MECH. DES. APP.	MS-3330 C		

REMOVE ALL BURRS AND SHARP EDGES.

REQ. PER UNIT	USED ON			MS-3332	0
	MODEL	ASS'Y. NO.	DATE		
1	GPT-200K	AX-393	8-27-63		



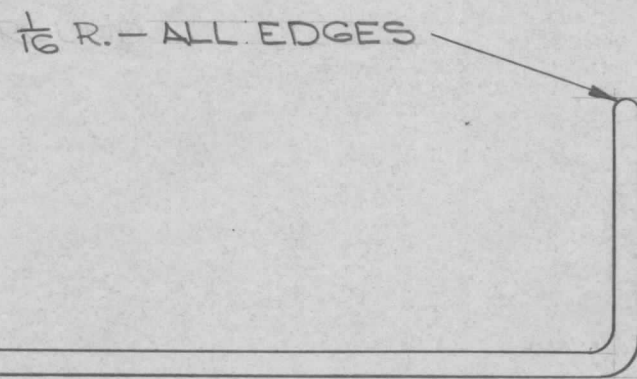
METAL STAMP TMC PART NO.
1/8 HIGH GOTHIC.

HOLES	REQ.
A - NO. 30 DRILL	10
B - 7/32 DIA.	4

REF-TMC DWG. NO. LD-1283

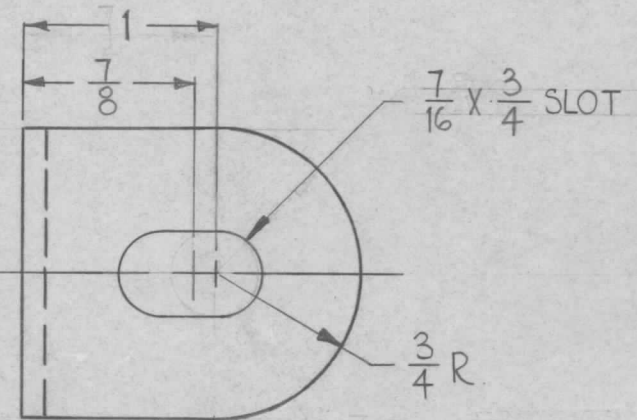
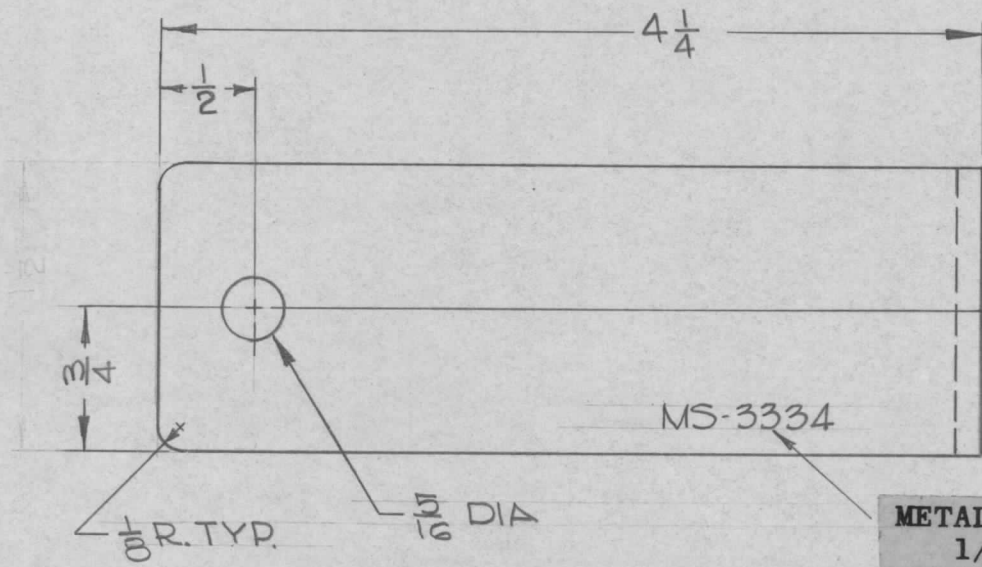
							REQ. ITEM	PART NO.	F. BUDETTI	DESCRIPTION	SYMBOL	
							.081 THICK STOCK SIZE		THE TECHNICAL MATERIEL CORP. MAMARONECK, NEW YORK			
							ALUMINUM		PLATE, FUSE MTG. SMALL			
0	RELEASED FOR PROD.	2-28-64	#	A.M.	(signature)		MATERIAL					
SYM	DESCRIPTION	DATE	CH. NO.	DRAFTS	CHECKER	ENG. APP.	5052-H32		John C. Biele	@ 2-28-64	RDC 2/28/64	
UNLESS OTHERWISE SPECIFIED DIMENSIONS ARE IN INCHES AND INCLUDE CHEMICALLY APPLIED OR PLATED FINISHES		SCALE		1" = 1"			TYPE & TEMPER		HEAT TREAT. SPEC.	DRAWN	CHECKED	FINAL APPROVAL
DECIMALS .X ± .05 .XX ± .01 .XXX ± .005	TOLERANCES	FRACTIONS ± 1/64 ANGLES ± 0° 30'	CODE	A			S:788-BLACK TEXTURED VINYL		(signature)		MS-3332 0	
						FINISH & SPEC. NO.		ELEC. DES. APP.	MECH. DES. APP.			

REQ. PER UNIT	USED ON			MS-3334	0
	MODEL	ASS'Y. NO.	DATE		
1	GPT-200K	AX-395	8-29-63		



UNLESS OTHERWISE SPECIFIED:

1. USE MATERIAL THICKNESS FOR MAXIMUM RADIUS ON ALL BENDS.
2. ALL ANGULAR BENDS 90°.
3. REMOVE ALL BURRS AND SHARP EDGES.



METAL STAMP TMC PART NO. 1/8 HIGH GOTHIC.

REQ.	ITEM	PART NO.	F. BUDETTI DESCRIPTION			SYMBOL
		1/8 THK	THE TECHNICAL MATERIEL CORP.			
		STOCK SIZE	MAMARONECK. NEW YORK			
0	ORIGINAL RELEASE	5.16.64	LSB	PLATE, ELECTRICAL INTERCONNECT		
SYM	DESCRIPTION	DATE	CH. NO.	DRAFTS	CHECKER	ENG. APP.
UNLESS OTHERWISE SPECIFIED DIMENSIONS ARE IN INCHES AND INCLUDE CHEMICALLY APPLIED OR PLATED FINISHES		SCALE		<i>Allen</i> 8-29-63 aa KC		
DECIMALS .X ± .05 .XX ± .01 .XXX ± .005		FRACTIONS ± 1/64 ANGLES ± 0° 30'		TYPE & TEMPER		HEAT TREAT. SPEC.
TOLERANCES		CODE		S245-SILVER PLATE .0003		FINISH & SPEC. NO.
				DRAWN		CHECKED
				ELEC. DES. APP.		MECH. DES. APP.
				MS-3334		0

REQ. PER UNIT	USED ON			MS-3335	0
	MODEL	ASS'Y. NO.	DATE		
1	GPT-200K	AS-124	8-29-63		

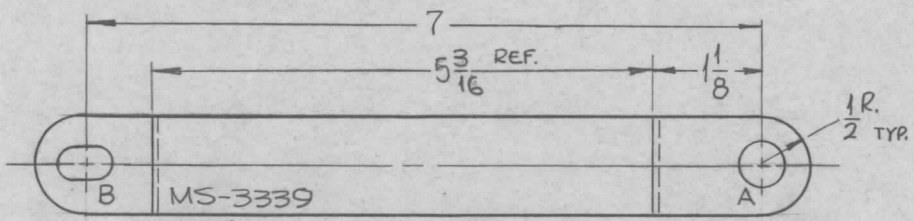
$\frac{1}{16}$ R. - ALL EDGES

HOLE
A - $5/16 \times 1/2$ SLOT - 4 REQ

METAL STAMP TMC PART NO.
1/8 HIGH GOTHIC.

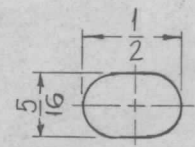
SYM	DESCRIPTION	DATE	CH. NO.	DRAFTS	CHECKER	ENG. APP.	REQ. ITEM	PART NO.	F. BUDETTI	DESCRIPTION	SYMBOL	
										THE TECHNICAL MATERIEL CORP. MAMARONECK. NEW YORK		
0	ORIG. RELEASE FOR PROD.	5-16-64		SRG			1/8 THK			PLATE, ELECTRICAL INTERCONNECT		
							HOT ROLLED COPPER					
							MATERIAL					
UNLESS OTHERWISE SPECIFIED DIMENSIONS ARE IN INCHES AND INCLUDE CHEMICALLY APPLIED OR PLATED FINISHES			SCALE 1:1				TYPE & TEMPER S245-SILVER PLATE .0003		HEAT TREAT. SPEC. DRAWN ELEC. DES. APP.		CHECKED MECH. DES. APP.	
DECIMALS .X ± .05 .XX ± .01 .XXX ± .005	TOLERANCES	FRACTIONS ± 1/64 ANGLES ± 0° 30'	CODE				FINISH & SPEC. NO.				MS-3335	0

REQ. PER UNIT	USED ON			MS-3339	0
	MODEL	ASS'Y. NO.	DATE		
1	GPT-200K	AX-395	1-8-64		



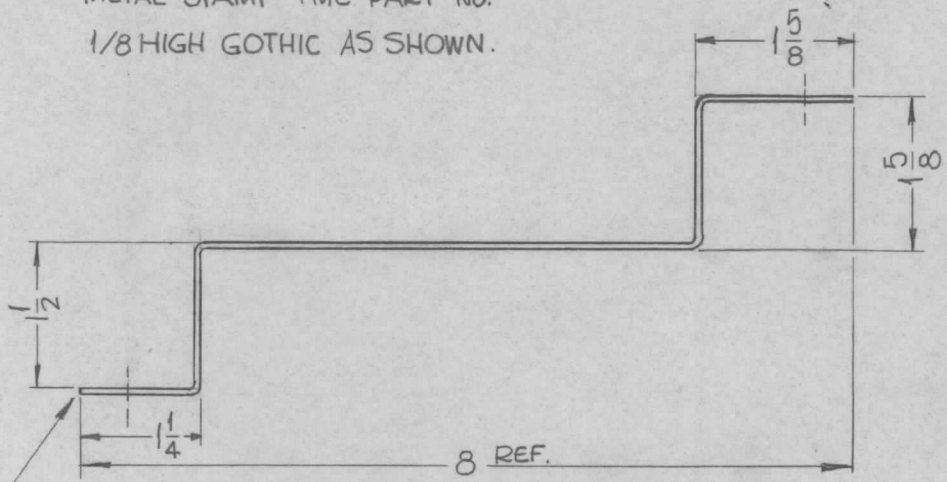
METAL STAMP TMC PART NO.
1/8 HIGH GOTHIC AS SHOWN.

HOLES:
A - 7/16 DIA. 1REQ.



B-DETAIL
(1REQ.)

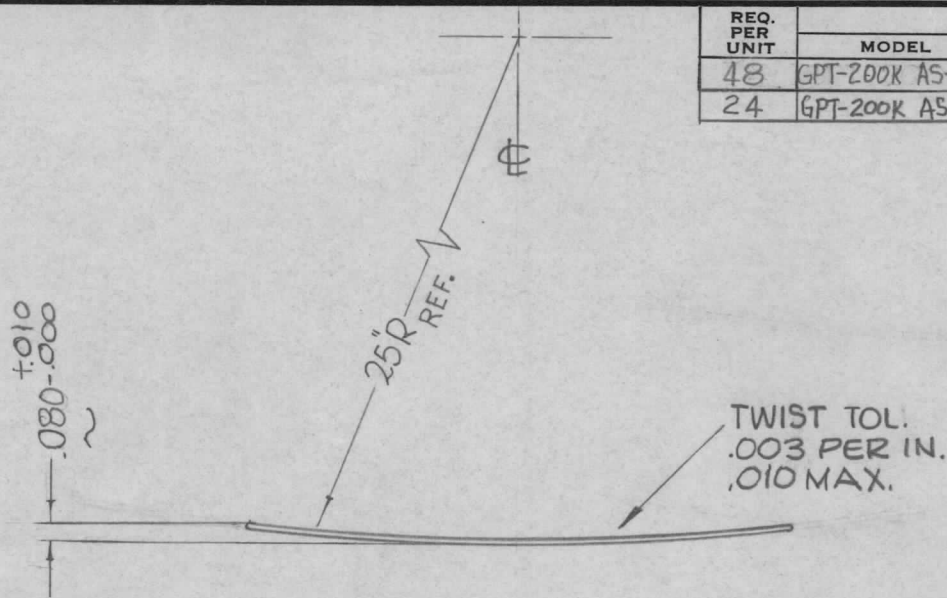
- UNLESS OTHERWISE SPECIFIED:
1. USE MATERIAL THICKNESS FOR MAXIMUM RADIUS ON ALL BENDS.
 2. ALL ANGULAR BENDS 90°.
 3. REMOVE ALL BURRS AND SHARP EDGES



ROUND ALL EDGES 1/32 R.

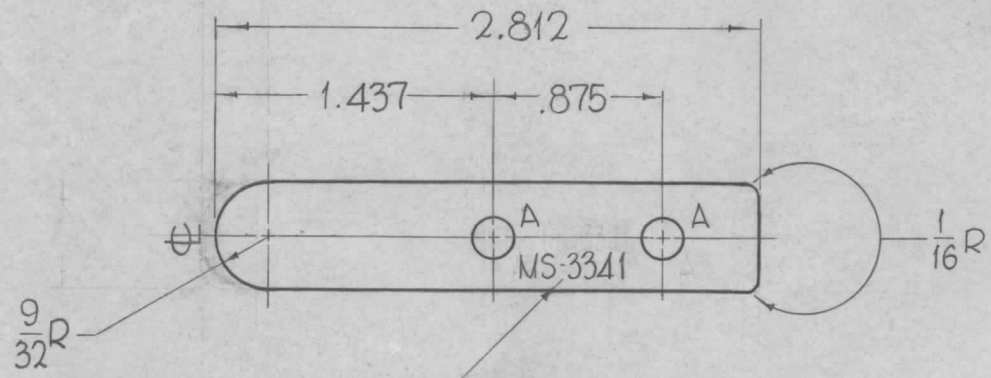
REQ.	ITEM	PART NO.	F. BUDETTI			DESCRIPTION	SYMBOL
		1/16 THICK				THE TECHNICAL MATERIEL CORP. MAMARONECK, NEW YORK	STRAP, EMERGENCY COAX CABLE
		STOCK SIZE					
		COPPER					
0	ORIGINAL RELEASE	5.16.64	15B				
X 2	RE-DESIGNED & REDRAWN	1-8-64	SRG				
SYM	DESCRIPTION	DATE	CH. NO.	DRAFTS	CHECKER	ENG. APP.	
UNLESS OTHERWISE SPECIFIED DIMENSIONS ARE IN INCHES AND INCLUDE CHEMICALLY APPLIED OR PLATED FINISHES		SCALE		1/2" = 1"			
DECIMALS .X ± .05 .XX ± .01 .XXX ± .005	TOLERANCES	FRACTIONS ± 1/64 ANGLES ± 0° 30'	CODE				
		S-245 SILVER PLATE		TYPE & TEMPER	HEAT TREAT. SPEC.	DRAWN	CHECKED
		FINISH & SPEC. NO.		ELEC. DES. APP.		MECH. DES. APP.	
		MS-3339		0		SRG dd RJC	
		MS-3339		0		1/21/64	

REQ. PER UNIT	USED ON			MS-3341	B
	MODEL	ASS'Y. NO.	DATE		
48	GPT-200K AS-123	AX-447	9-2-63		
24	GPT-200K AS-123	AX-448	9-2-63		



HOLES REQ.
 A - .218 DIA. 2

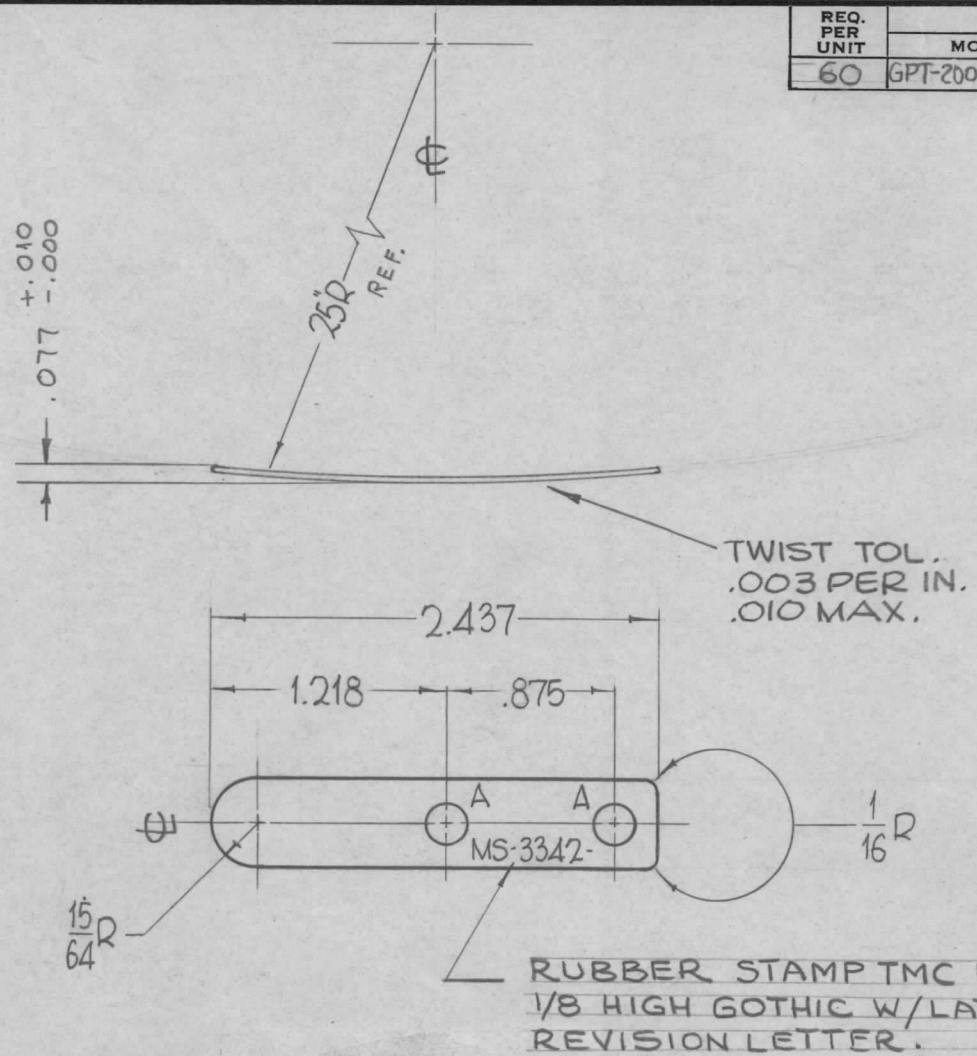
- NOTES:
- 1-SPRING TO BE BENT AFTER DRILLING
 - 2-ALL EDGES, BUFFED ROUND.
 - 3-HOLD AT 600°F FOR 3 HOURS LET AIR COOL.
 - 4-FINISH- S245-SILVER PLATE, BRIGHT S423-IRIDITE, 18P SILVER KOTE
 - 4- ALL EDGES, BUFFED ROUND



METAL STAMP TMC PART NO. 1/8 HIGH GOTHIC.

SYM	DESCRIPTION	DATE	CH. NO.	DRAFTS	CHECKER	ENG. APP.	REQ. ITEM	PART NO.	F. BUDETTI	DESCRIPTION	SYMBOL
								.040 THICK		THE TECHNICAL MATERIEL CORP. MAMARONECK, NEW YORK	SPRING, PRESSURE, T-1
								STOCK SIZE			
B	ORIG. RELEASE FOR PROD.	5-18-64			SRG			COPPER			
A	NOTES RE-ARRANGED NOTE 3 ADDED	5-12-64			SRG						
UNLESS OTHERWISE SPECIFIED DIMENSIONS ARE IN INCHES AND INCLUDE CHEMICALLY APPLIED OR PLATED FINISHES		SCALE		1" = 1"			BERYLUM		John C. Biele	QA JB	RC
DECIMALS .X ± .05 .XX ± .01 .XXX ± .005		FRACTIONS ± 1/64 ANGLES ± 0° 30'		TOLERANCES		CODE	TYPE & TEMPER	HEAT TREAT. SPEC.	DRAWN	CHECKED	FINAL APPROVAL
							SEE NOTES				MS-3341 B
							FINISH & SPEC. NO.		ELEC. DES. APP.	MECH. DES. APP.	

REQ. PER UNIT	USED ON			MS-3342 A
	MODEL	ASS'Y. NO.	DATE	
60	GPT-200K(AS-124)	AX-442	9-2-63	



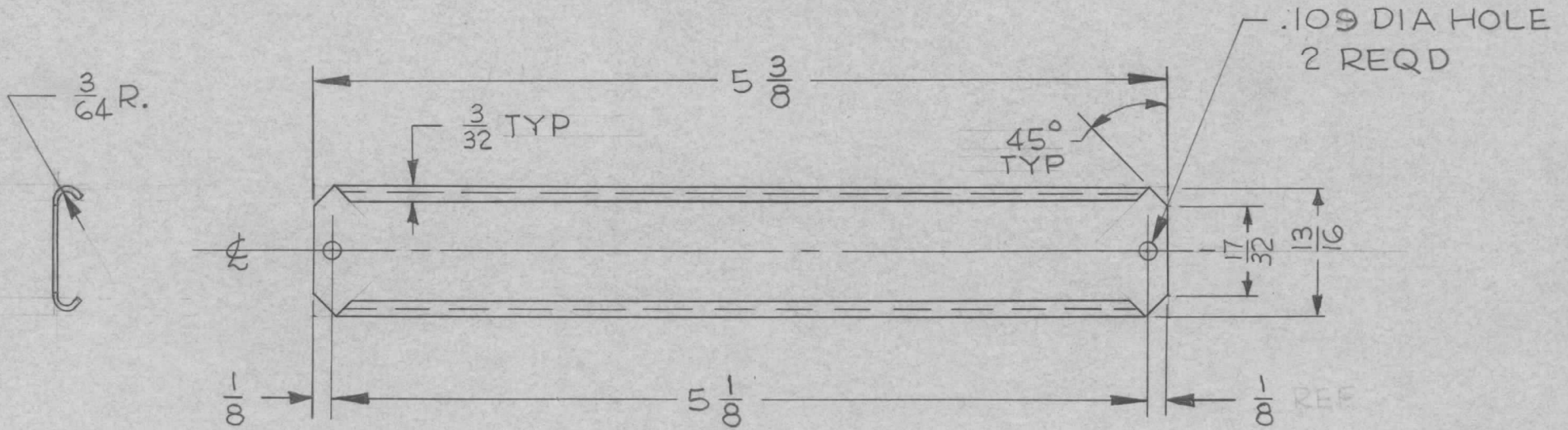
HOLES REQ.
A-.218DIA. 2

NOTES:
1~ SPRING TO BE BENT AFTER DRILLING
2~ ALL EDGES, BUFFED ROUND.
3~ HOLD AT 600°F FOR 3 HOURS
LET AIR COOL
4~ FINISH- S245 SILVER PLATE BRIGHT
S423 IRIDITE, 18P SILVER KOTE

SYM	DESCRIPTION	DATE	CH. NO.	DRAFTS	CHECKER	ENG. APP.	REQ. ITEM	PART NO.	DESCRIPTION	SYMBOL	
A	STAMP WAS "METAL"	8-26-64	12201	KB	JCD	2p			THE TECHNICAL MATERIEL CORP. MAMARONECK, NEW YORK	SPRING, PRESSURE IT-2	
O	ORIG. RELEASE FOR PROD.	5-16-64		SRG			.040 THICK				
							STOCK SIZE				
A	TWIST TOL ADDED NOTE 3 ADDED & RE-ARRANGED	5-11-64		SRG			COPPER				
UNLESS OTHERWISE SPECIFIED DIMENSIONS ARE IN INCHES AND INCLUDE CHEMICALLY APPLIED OR PLATED FINISHES		SCALE		1" = 1"			MATERIAL				
							BERYLIUM		John C. Biele	QA	RAC
							TYPE & TEMPER	HEAT TREAT. SPEC.	DRAWN	CHECKED	FINAL APPROVAL
DECIMALS .X ± .05 .XX ± .01 .XXX ± .005		FRACTIONS ± 1/64 ANGLES ± 0° 30'		TOLERANCES			SEE NOTES		ELEC. DES. APP.		MECH. DES. APP.
							FINISH & SPEC. NO.		MS-3342		A

THE CONTENTS OF THIS DRAWING ARE THE EXCLUSIVE PROPERTY OF THE TECHNICAL MATERIEL CORP. ITS UNAUTHORIZED USE FOR REPRODUCTION IN WHOLE OR IN PART IS STRICTLY FORBIDDEN.

REQ. PER UNIT	USED ON			MS-3343
	MODEL	ASS'Y. NO.	DATE	



NOTE
 5-371 DEGREASE
 5-114 ZINC CHROMATE PRIMER
 5-115 SMOOTH GREY ENAMEL.

SYM	DESCRIPTION	DATE	CH. NO.	DRAFTS	CHECKER	ENG. APP.	REQ. ITEM	PART NO.	DESCRIPTION	SYMBOL		
							.012		THE TECHNICAL MATERIEL CORP. MAMARONECK, NEW YORK			
							STEEL			HOLDER, CARD		
							MILD					
UNLESS OTHERWISE SPECIFIED DIMENSIONS ARE IN INCHES AND INCLUDE CHEMICALLY APPLIED OR PLATED FINISHES							SCALE	TYPE & TEMPER	HEAT TREAT. SPEC.	DRAWN	CHECKED	FINAL APPROVAL
DECIMALS .X ± .05 .XX ± .01 .XXX ± .005							TOLERANCES	SEE NOTE				
FRACTIONS ± 1/64 ANGLES ± 0° 30'							CODE	FINISH & SPEC. NO.		ELEC. DES. APP.	MECH. DES. APP.	MS-3343

THE CONTENTS OF THIS DRAWING ARE THE EXCLUSIVE PROPERTY OF THE TECHNICAL MATERIEL CORP. ITS UNAUTHORIZED USE FOR REPRODUCTION IN WHOLE OR IN PART IS STRICTLY FORBIDDEN.

REQ. PER UNIT

USED ON

MODEL

ASS'Y. NO.

DATE

1

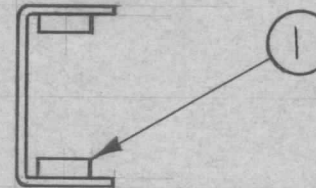
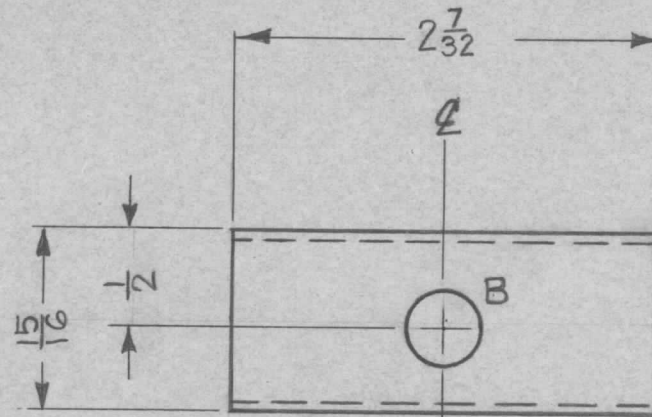
TTR-10

AX-409

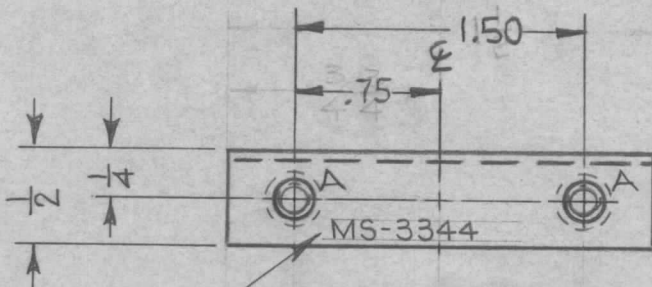
4-22-63

MS-3344

A



1 MOUNT IN ALL 'A' HOLES AS SHOWN AFTER FINISHING



OPPOSITE SIDE IDENTICAL

METAL STAMP TMC PART NO. 1/8 HIGH GOTHIC

HOLE	REQ	DESCRIPTION
A	4	.191-.194 DIA.
B	1	3/8 DIA.

NOTES:

1. USE MATERIAL THICKNESS FOR MAX RADIUS ON ALL BENDS.
2. ALL ANGULAR BENDS 90°
3. REMOVE ALL BURRS & SHARP EDGES.

4	1	NT-129-632-3	NUT, SWAGE	
REQ. ITEM	PART NO.		KOHN	DESCRIPTION E3037-54 SYMBOL
.051 THK			THE TECHNICAL MATERIEL CORP.	
STOCK SIZE			MAMARONECK, NEW YORK	
ALUMINUM			SHIELD, TOP,	
MATERIAL			IFT TANK	
5052-H32		HEAT TREAT. SPEC.	DRAWN	CHECKED
S404 YELLOW IRIDITE		R.KOHN	W. JORDAN	MS-3344 A
FINISH & SPEC. NO.		ELEC. DES. APP.	MECH. DES. APP.	

UNLESS OTHERWISE SPECIFIED DIMENSIONS ARE IN INCHES AND INCLUDE CHEMICALLY APPLIED OR PLATED FINISHES		SCALE		FULL #	
DECIMALS	FRACTIONS	CODE			
.X ± .05	± 1/64	A			
.XX ± .01	ANGLES				
.XXX ± .005	± 0° 30'				
TOLERANCES					

THE CONTENTS OF THIS DRAWING ARE THE EXCLUSIVE PROPERTY OF THE TECHNICAL MATERIEL CORP. ITS UNAUTHORIZED USE FOR REPRODUCTION IN WHOLE OR IN PART IS STRICTLY FORBIDDEN.

REQ. PER UNIT

USED ON

MODEL

ASS'Y. NO.

DATE

1

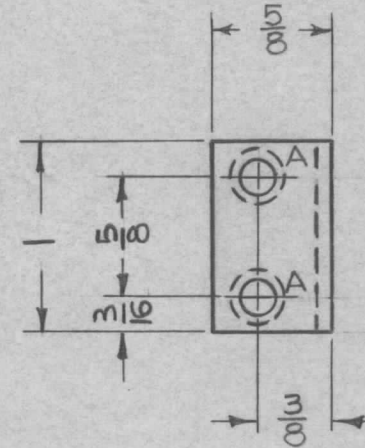
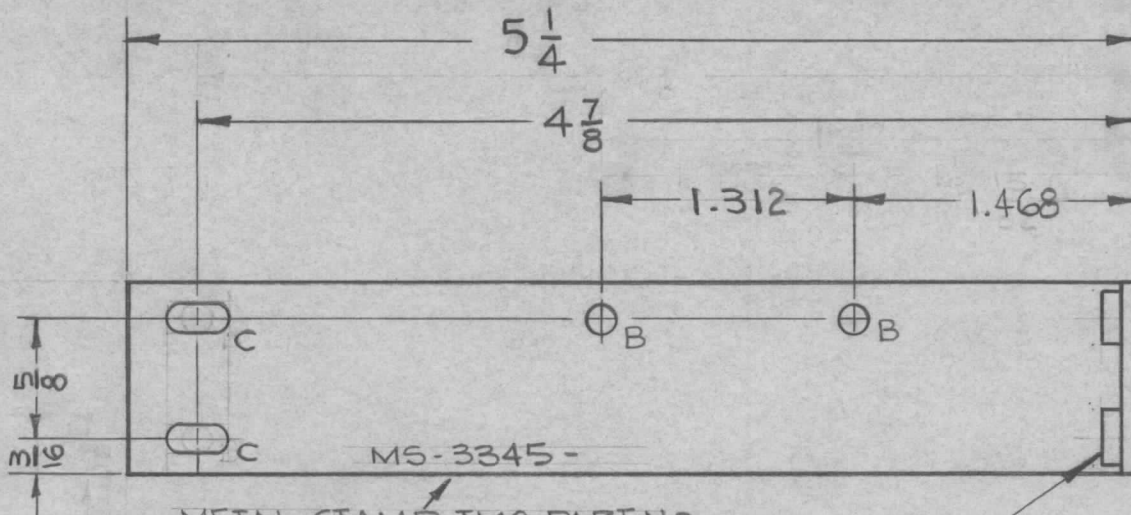
TTR-10

AX 409

4-22-63

MS-3345

A



METAL STAMP TMC PART NO. 1/8 HIGH GOTHIC, WITH LATEST REV. LETTER.

① MOUNT IN ALL "A" HOLES AS SHOWN

NOTES

1. USE MATERIAL THICKNESS FOR MAX RADIUS ON ALL BENDS UNLESS OTHERWISE SPECIFIED
2. ALL ANGULAR BENDS 90° UNLESS OTHERWISE SPECIFIED
3. REMOVE ALL BURRS & SHARP EDGES

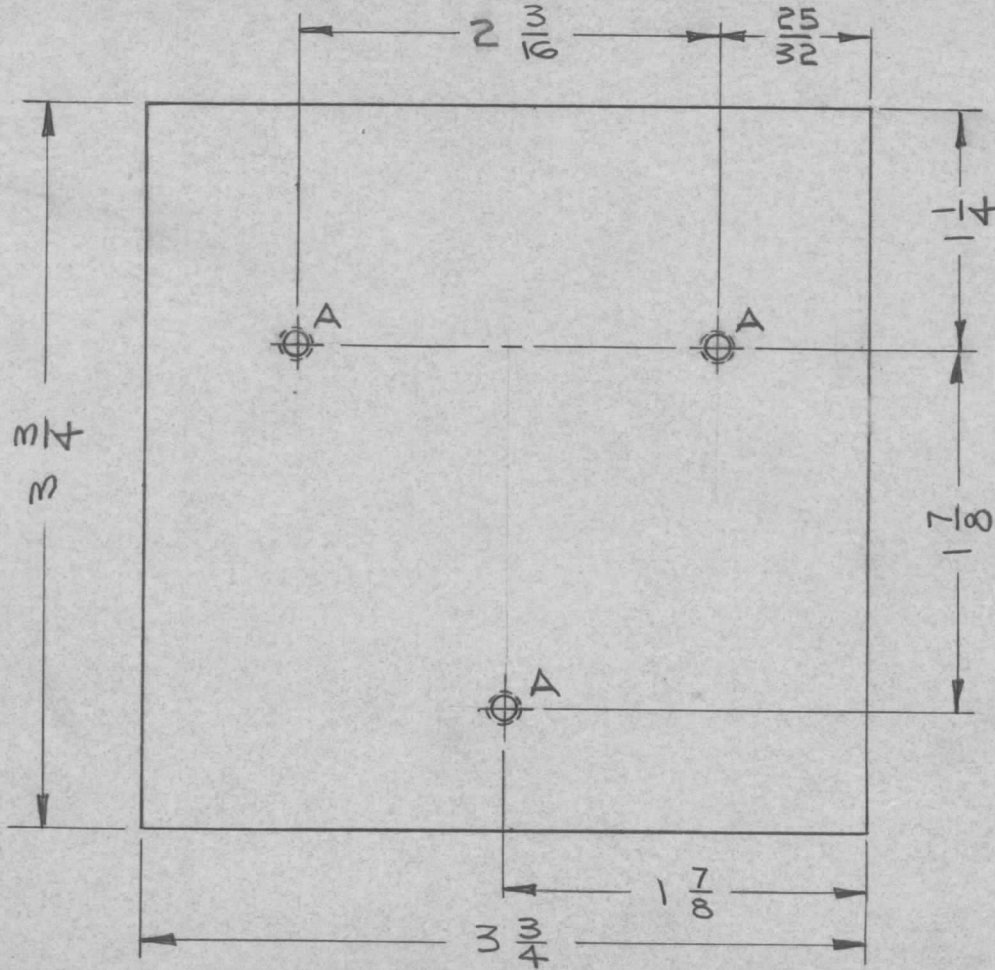
HOLE	DESCRIPTION	REQ'D
A	.191-.194 DIA	2
B	5/32 DIA	2
C	5/16 X 5/32 SLOT	2

2	1	NT-129-632-4	NUT, SWAGE	A
REQ.	ITEM	PART NO.	KOHN DESCRIPTION	E 3037-71 SYMBOL
.081 THK STOCK SIZE			THE TECHNICAL MATERIEL CORP. MAMARONECK, NEW YORK	
ALUMINUM MATERIAL			BRACKET, CAPACITOR MTG. IFA TANK	
5052-H32 TYPE & TEMPER		HEAT TREAT. SPEC.	DRAWN	CHECKED
S404 YELLOW IRIDITE FINISH & SPEC. NO.		ELEC. DES. APP.	MECH. DES. APP.	MS-3345 A
UNLESS OTHERWISE SPECIFIED DIMENSIONS ARE IN INCHES AND INCLUDE CHEMICALLY APPLIED OR PLATED FINISHES		SCALE	FINAL APPROVAL	
DECIMALS	FRACTIONS	CODE		
.X ± .05	± 1/64	A		
.XX ± .01	ANGLES			
.XXX ± .005	± 0° 30'			

THE CONTENTS OF THIS DRAWING ARE THE EXCLUSIVE PROPERTY OF THE TECHNICAL MATERIEL CORP. ITS UNAUTHORIZED USE FOR REPRODUCTION IN WHOLE OR IN PART IS STRICTLY FORBIDDEN.

REQ. PER UNIT	USED ON			MS-3358
	MODEL	ASS'Y. NO.	DATE	
1	DDR-9A	A-3118	5-27-63	

A = TAP # 8-32, 3 REQ'D



NOTES:

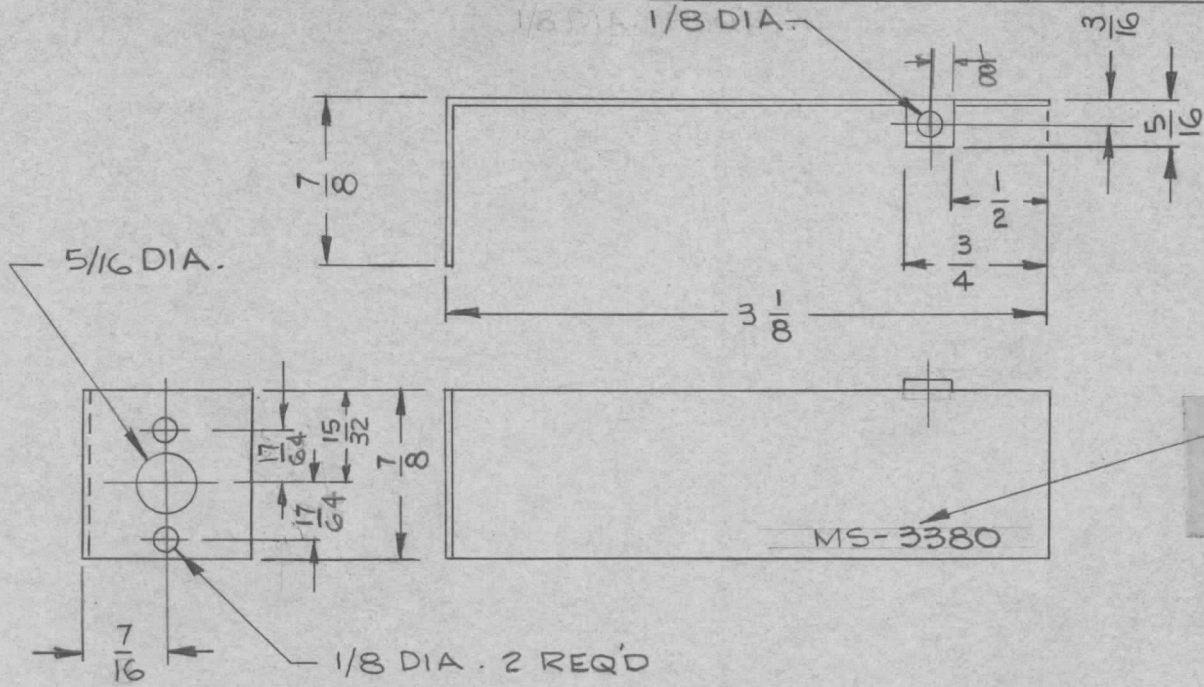
1. REMOVE ALL BURRS & SHARP EDGES.
2. FINISH: RCAF MEDIUM GREY WRINKLE ENAMEL, PER TMC SPEC S-254.

REQ.	ITEM	PART NO.	I. JOHNSON DESCRIPTION			SYMBOL
		1/8 THK	THE TECHNICAL MATERIEL CORP.			
		STOCK SIZE	MAMARONECK, NEW YORK			
		ALUMINUM	PLATE, COVER, AC			
SYM	DESCRIPTION	DATE	CH. NO.	DRAFTS	CHECKER	ENG. APP.
UNLESS OTHERWISE SPECIFIED DIMENSIONS ARE IN INCHES AND INCLUDE CHEMICALLY APPLIED OR PLATED FINISHES		SCALE	1:1			
DECIMALS	FRACTIONS	CODE	5052-H32			
.X ± .05	± 1/64		TYPE & TEMPER	HEAT TREAT. SPEC.	DRAWN	CHECKED
.XX ± .01	ANGLES		SEE NOTE 2		6/20/63	6-29-63
.XXX ± .005	± 0° 30'		FINISH & SPEC. NO.	ELEC. DES. APP.	MECH. DES. APP.	MS-3358

THE CONTENTS OF THIS DRAWING ARE THE EXCLUSIVE PROPERTY OF THE TECHNICAL MATERIEL CORP. ITS UNAUTHORIZED USE FOR REPRODUCTION IN WHOLE OR IN PART IS STRICTLY FORBIDDEN.

REQ. PER UNIT	USED ON		
	MODEL	ASS'Y. NO.	DATE
4	TTRR-2,3,4		4-17-63
4	TTRT-1,2,3,4		4-17-63
3	TTRR-1		4-17-63

MS-3380



METAL STAMP TMC PART NO. 1/8 HIGH GOTHIC.

NOTES:
 1. USE MATERIAL PROPERTIES FOR MAX. STRESS RATIO
 2. ALL ANGLES TO BE 90°

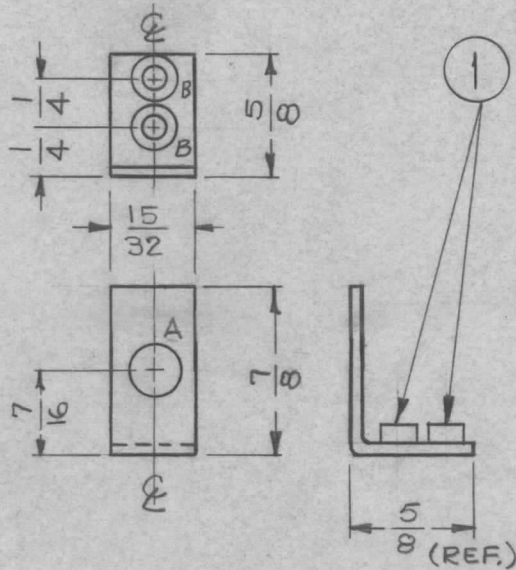
							REQ. ITEM	PART NO.	JORDAN DESCRIPTION	E3037-204	SYMBOL	
							.040		THE TECHNICAL MATERIEL CORP. MAMARONECK, NEW YORK			
							STOCK SIZE		EDGE SHIELD, RF.			
							ALUMINUM					
							MATERIAL					
SYM	DESCRIPTION	DATE	CH. NO.	DRAFTS	CHECKER	ENG. APP.	5052-H32		WAP	1/16 5/16	BPO	
UNLESS OTHERWISE SPECIFIED DIMENSIONS ARE IN INCHES AND INCLUDE CHEMICALLY APPLIED OR PLATED FINISHES		SCALE					TYPE & TEMPER	HEAT TREAT. SPEC.	DRAWN	CHECKED	FINAL APPROVAL	
DECIMALS .X ± .05 .XX ± .01 .XXX ± .005	TOLERANCES	FRACTIONS ± 1/64 ANGLES ± 0° 30'	CODE A					S404 YELLOW IRIDITE		WAP	W.A. PAUL	MS-3380
							FINISH & SPEC. NO.		ELEC. DES. APP.	MECH. DES. APP.		

THE CONTENTS OF THIS DRAWING ARE THE EXCLUSIVE PROPERTY OF THE TECHNICAL MATERIEL CORP. ITS UNAUTHORIZED USE FOR REPRODUCTION IN WHOLE OR IN PART IS STRICTLY FORBIDDEN.

REQ. PER UNIT	USED ON		
	MODEL	ASS'Y. NO.	DATE
2	VLR-1	A-3181	4-15-63
2	VLR-1	A-3168	4-15-63

MS 33920

LEGEND		
HOLE	DESCRIPTION	REQ
A	.250 DIA.	1
B	.161-.164 DIA.	2



MOUNT ITEM (1) IN ALL "B" HOLES AS SHOWN FINISHING.

UNLESS OTHERWISE SPECIFIED:

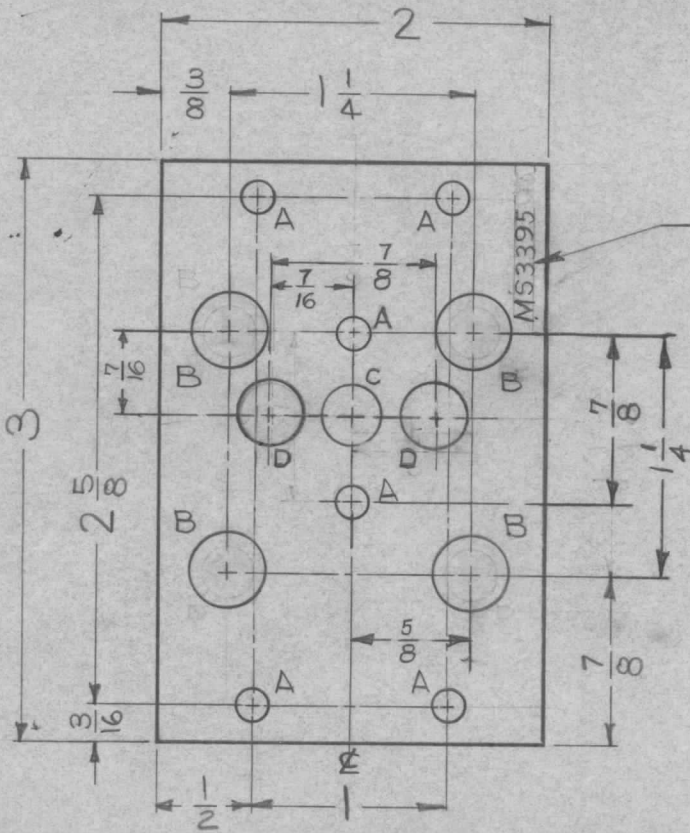
1. USE MATERIAL THICKNESS FOR MAXIMUM RADIUS ON ALL BENDS.
2. ALL ANGULAR BENDS 90°.
3. REMOVE ALL BURRS AND SHARP EDGES.
4. MOUNT INSERTS AFTER FINISHING.

2	1	NT-129-0440-3	NUT, ROUND, SWAGE TYPE	B
REQ. ITEM	PART NO.		M. GELLMAN DESCRIPTION	SYMBOL
	.051		THE TECHNICAL MATERIEL CORP. MAMARONECK, NEW YORK	
	STOCK SIZE		BRACKET, MOUNTING-RESISTOR, VARIABLE	
	ALUMINUM			
	MATERIAL			
	5052-H32		<i>G. Jensen</i>	<i>@</i>
	TYPE & TEMPER	HEAT TREAT. SPEC.	DRAWN	CHECKED
	IRIDITE AS PER TMC SPEC. S-404		<i>MJ</i>	<i>MJ</i>
	FINISH & SPEC. NO.		ELEC. DES. APP.	MECH. DES. APP.
				MS 33920

○ ORIGINAL RELEASE FOR PRODUCTION	5-11-64	0	A.M.	<i>@</i>	
SYM	DESCRIPTION	DATE	CH. NO.	DRAFTS	CHECKER
UNLESS OTHERWISE SPECIFIED DIMENSIONS ARE IN INCHES AND INCLUDE CHEMICALLY APPLIED OR PLATED FINISHES		SCALE	1:1		
DECIMALS	FRACTIONS	CODE			
.X ± .05	± 1/64	A			
.XX ± .01	ANGLES				
.XXX ± .005	± 0° 30'				

THE CONTENTS OF THIS DRAWING ARE THE EXCLUSIVE PROPERTY OF THE TECHNICAL MATERIEL CORP. ITS UNAUTHORIZED USE FOR REPRODUCTION IN WHOLE OR IN PART IS STRICTLY FORBIDDEN.

REQ. PER UNIT 1	USED ON			MS-3395	B
	MODEL GPR-92	ASS'Y. NO.	DATE 5-9-63		



METAL STAMP TMC PART NO. 1/8 HIGH GOTHIC WITH LATEST REVISION LETTER.

LEGEND		
HOLE	DESCRIPTION	REQ.
A	11/64 DIA.	6
B	3/8 DIA.	4
C	5/16 DIA.	1
D	11/32 DIA.	2

NOTE:
DEBURR ALL SHARP EDGES

							REQ. ITEM	PART NO.	J. STRUMER DESCRIPTION			SYMBOL	
							.064 THK. STOCK SIZE		THE TECHNICAL MATERIEL CORP. MAMARONECK, NEW YORK				
							ALUMINUM		BASE, FILTER				
							MATERIAL						
UNLESS OTHERWISE SPECIFIED DIMENSIONS ARE IN INCHES AND INCLUDE CHEMICALLY APPLIED OR PLATED FINISHES							SCALE	5052-H32	H32	Drawn	Checked	FINAL APPROVAL	
							F:11	TYPE & TEMPER	HEAT TREAT. SPEC.	Drawn	Checked	FINAL APPROVAL	
DECIMALS .X ± .05 .XX ± .01 .XXX ± .005							TOLERANCES	S404 IRIDITE 14-2 AL-COAT		Drawn	Checked	FINAL APPROVAL	
FRACTIONS ± 1/64 ANGLES ± 0° 30'							CODE			Drawn	Checked	FINAL APPROVAL	
												MS-3395	B

THE CONTENTS OF THIS DRAWING ARE THE EXCLUSIVE PROPERTY OF THE TECHNICAL MATERIEL CORP. ITS UNAUTHORIZED USE FOR REPRODUCTION IN WHOLE OR IN PART IS STRICTLY FORBIDDEN.

REQ. PER UNIT

1

USED ON

MODEL

VLR-1

ASS'Y. NO.

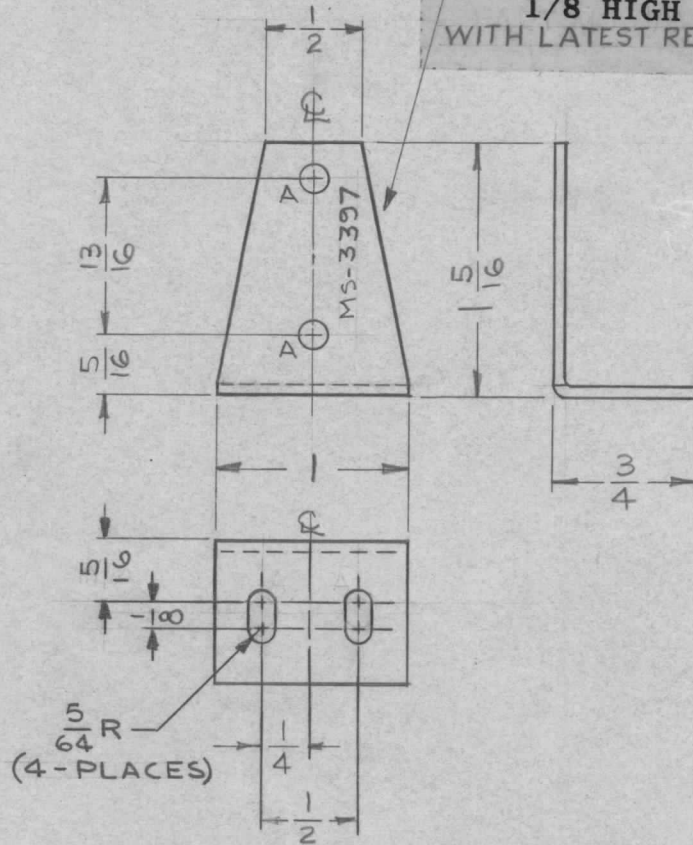
AX-434

DATE

5-28-63

MS-3397 O

METAL STAMP TMC PART NO. 1/8 HIGH GOTHIC. WITH LATEST REVISION LETTER



HOLES
A - .140 DIA. - 2 REQ.

UNLESS OTHERWISE SPECIFIED:

1. USE MATERIAL THICKNESS FOR MAXIMUM RADIUS ON ALL BENDS.
2. ALL ANGULAR BENDS 90°.
3. REMOVE ALL BURRS AND SHARP EDGES.
4. MOUNT INSERTS AFTER FINISHING.

SYM	DESCRIPTION	DATE	CH. NO.	DRAFTS	CHECKER	ENG. APP.	REQ. ITEM	PART NO.	M. GELLMAN DESCRIPTION	SYMBOL	
O	ORIGINAL RELEASE FOR PRODUCTION	5-11-64	O	A.M.	@			.062 THK	THE TECHNICAL MATERIEL CORP. MAMARONECK, NEW YORK	BRACKET, SUPPORT (ROTARY SWITCH)	
XI	5/16 DIM. WAS 3/8; "B" SLOT DET. WAS .140 DIA. QTY 4.	4/2/64	1	JL			ALUMINUM				
	UNLESS OTHERWISE SPECIFIED DIMENSIONS ARE IN INCHES AND INCLUDE CHEMICALLY APPLIED OR PLATED FINISHES	SCALE	1:1				5052-H32	#	<i>G. Jensen</i>	@	<i>RK</i>
	DECIMALS .X ± .05 .XX ± .01 .XXX ± .005	TOLERANCES	FRACTIONS ± 1/64 ANGLES ± 0° 30'	CODE A			TYPE & TEMPER S404-YELLOW IRIDITE	HEAT TREAT. SPEC.	DRAWN <i>DMA</i>	CHECKED <i>DMA</i>	FINAL APPROVAL MS-3397 O
							FINISH & SPEC. NO.	ELEC. DES. APP.	MECH. DES. APP.		