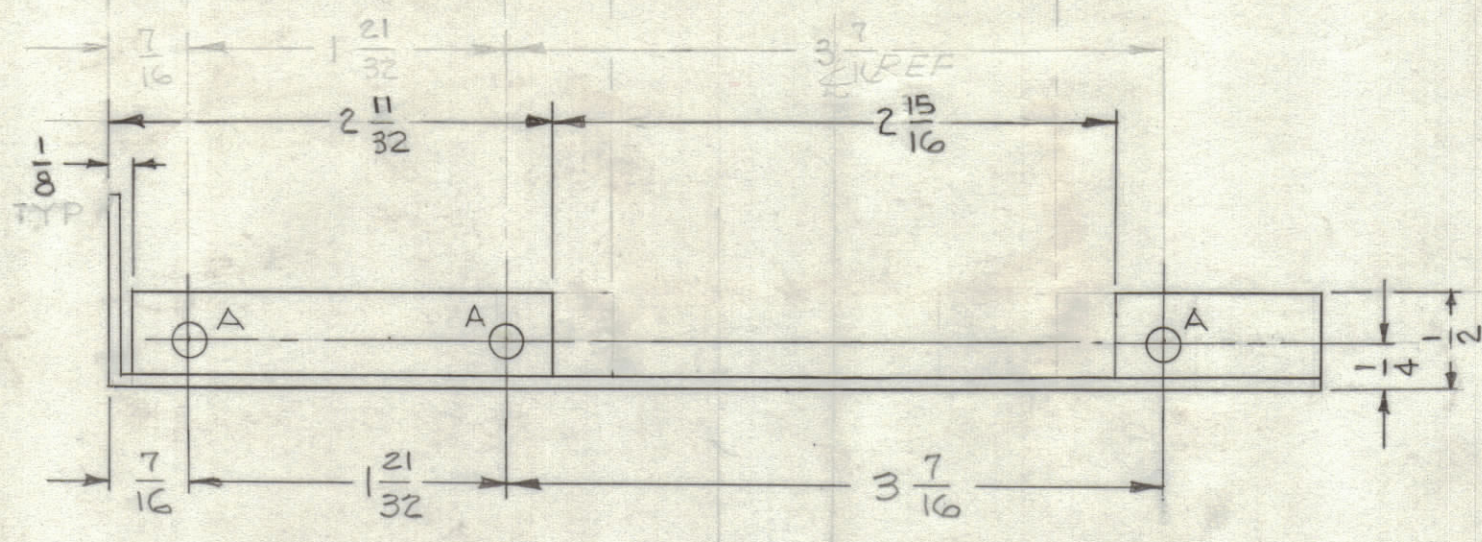
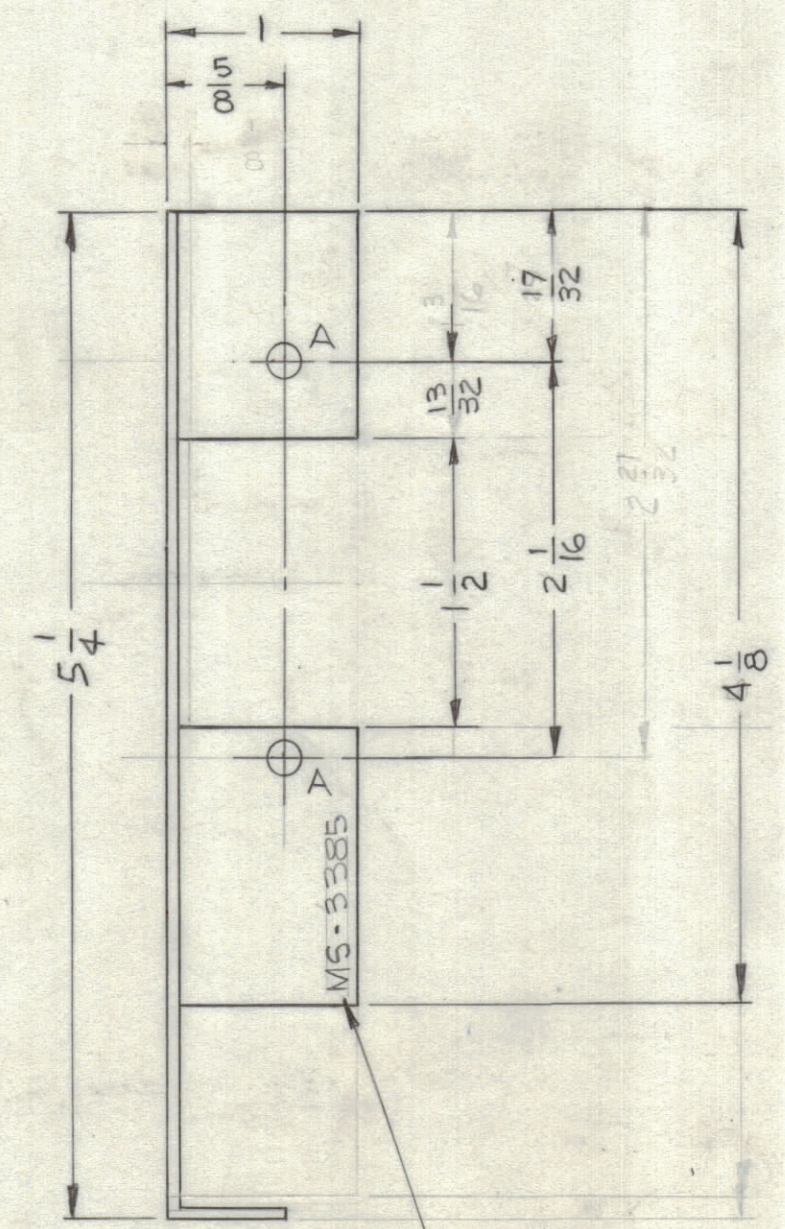
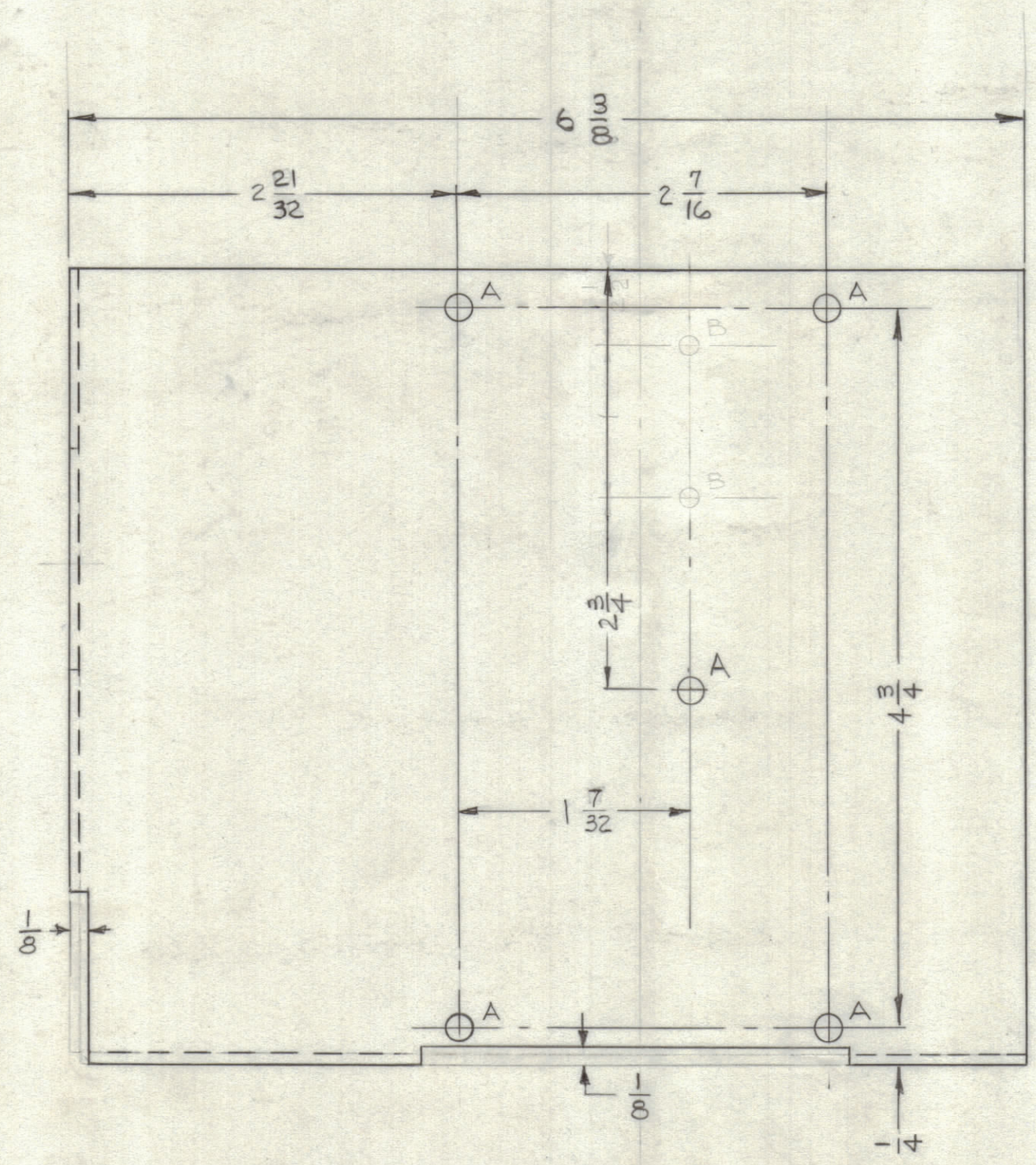


REVISIONS							
ZONE	SYM	DESCRIPTION	DATE	E.M.N. NO.	DRAFT	CHKD	APPD



HOLE LEGEND	
A	3/16 DIA - 10 REQD
B	1/8 DIA - 2 REQD



METAL STAMP TMC PART NO. 1/8 HIGH GOTHIC.

NOTES:  
 1.- USE MAT'L THICKNESS FOR MAX. BEND RADIUS  
 2.- ALL ANGULAR BENDS 90°.

REF: LD-1328

REQ'D.	ITEM	PART NUMBER	JORDAN	DESCRIPTION	E 3037-17	SYMBOL
LIST OF MATERIAL						
MATERIAL			THE TECHNICAL MATERIEL CORP. MAMARONECK, NEW YORK			
.064 THK ALUMINUM 5052-H32			SHIELD, FRONT, UPPER P.A.			
FINISH			TITLE			
S404 S404 IRIDITE 14-2 AL-COAT			SHIELD, FRONT, UPPER P.A.			
UNLESS OTHERWISE SPECIFIED DIMENSIONS ARE IN INCHES AND INCLUDE CHEMICALLY APPLIED OR PLATED FINISHES		DRAWN		DATE	FINAL APPROVAL	
DECIMALS .X ± .05 .XX ± .01 .XXX ± .005		TOLERANCES		DATE	DATE	
FRACTIONS ± 1/64 ANGLES ± 0° 30'		CHECKED		DATE	DATE	
		ELECT. DES.		DATE	DATE	
		MECH. DES.		DATE	DATE	
		W. JORDAN		1/16/64	MS-3385	
					SHEET	
					REV. LTR.	

Q'TY./UNIT	MODEL USED ON	ASS'Y. NO.
1	TTR-10	A-2775
SCALE	CODE	
1:1	A	

NOTES  
 THE CONTENTS OF THIS DRAWING ARE THE EXCLUSIVE PROPERTY OF THE TECHNICAL MATERIEL CORP. ITS UNAUTHORIZED USE OR REPRODUCTION IN WHOLE OR IN PART IS STRICTLY FORBIDDEN.

MS-3385