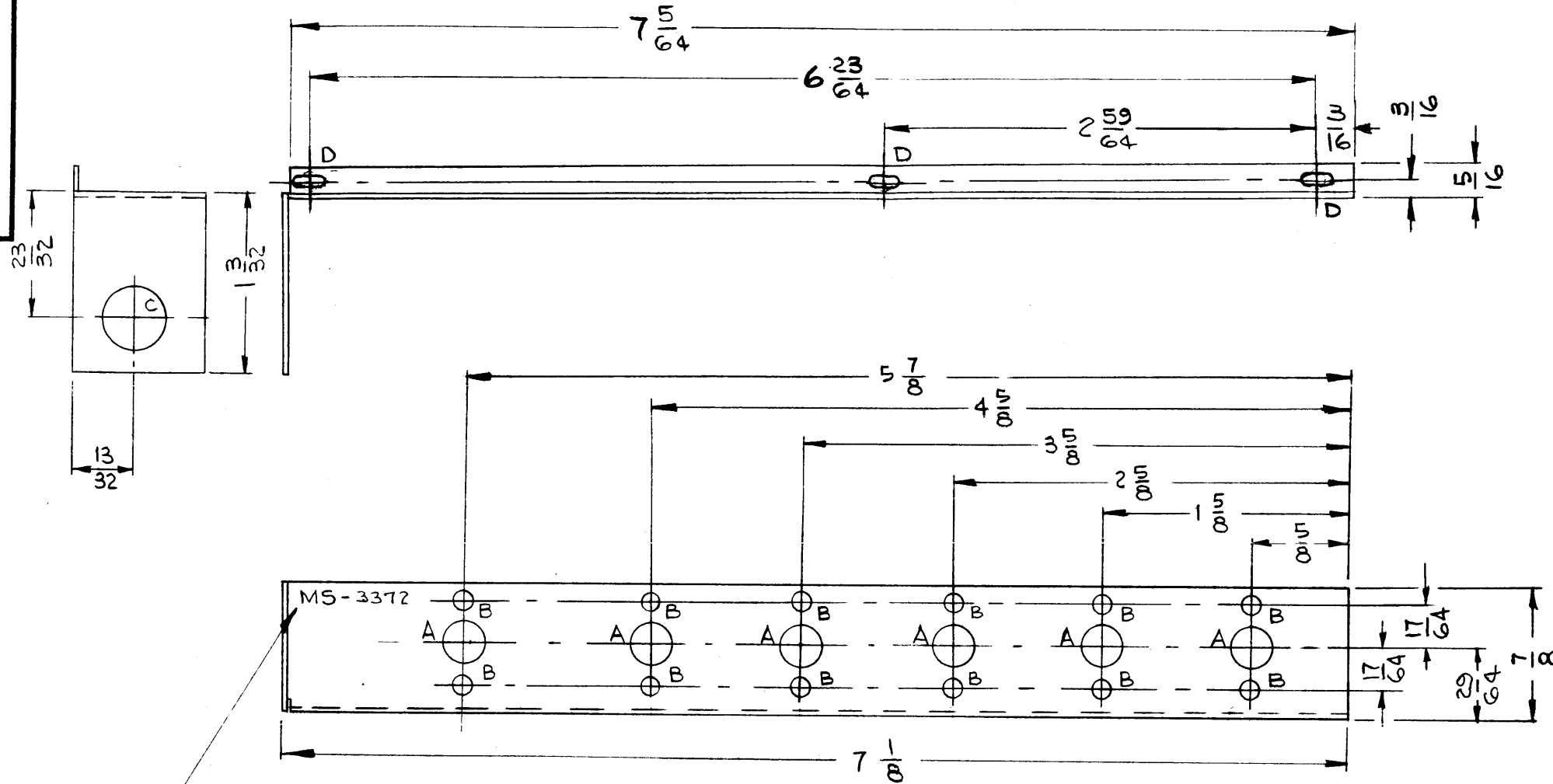


A

THE CONTENTS OF THIS DRAWING ARE THE EXCLUSIVE PROPERTY OF THE TECHNICAL MATERIEL CORP. ITS UNAUTHORIZED USE OR REPRODUCTION IN WHOLE OR IN PART IS STRICTLY FORBIDDEN.

MS-3372



HOLE LEGEND		
HOLE	DESCRIPTION	REQ'D
A	9/32 DIA	6
B	1/8 DIA	12
C	13/32 DIA	1
D	1/8 x 1/4 SLOTS	3

METAL STAMP TMC PART NO. 1/8 HIGH GOTHIC, WITH LATEST REV. LETTER.

- ~ UNLESS OTHERWISE SPECIFIED ~
1. USE MAT'L THICKNESS FOR MAX. RADIUS ON ALL BENDS
 2. ALL ANGULAR BENDS 90°
 3. REMOVE ALL BURRS & SHARP EDGES

A	(D) SLOTS WERE (3) B HOLES TOP VIEW DIMS COMP. REVISED	3-19-65	13644	JS	JCH	J
	SYM DESCRIPTION	DATE	CH. NO.	DRAFTS	CHECKER	ENG. APP.
UNLESS OTHERWISE SPECIFIED:		SCALE: $\frac{1}{1}$		A		
DIMENSIONS ARE IN INCHES		MAXIMUM ALLOWABLE TOLERANCES HAVE BEEN DETERMINED AND ANY DEVIATIONS WILL BE CAUSE FOR REJECTION.				
TOLERANCES ON FRACTIONS $\pm 1/64$ DECIMALS $\pm .005$ ANGLES $\pm 1/2^\circ$		REMOVE ALL BURRS AND SHARP EDGES				
REQ. PER UNIT	MODEL	SECTION	ASSY. NO.	DATE	USED ON	

REQ. ITEM	PART NO.	JORDAN DESCRIPTION E-3037-203	SYMBOL
.040 STOCK SIZE		THE TECHNICAL MATERIEL CORP. MAMARONECK, NEW YORK	
ALUMINUM		BRACKET, CAPACITOR MTG.	
MATERIAL			
5052-H32		5/24/65	
TYPE & TEMPER	HEAT TREAT. SPEC.	DRAWN	CHECKED
S404 YELLOW IRIDITE		RC	WAP
FINISH & SPEC. NO.	ELEC. DES. APP.	MECH. DES. APP.	MS-3372 A