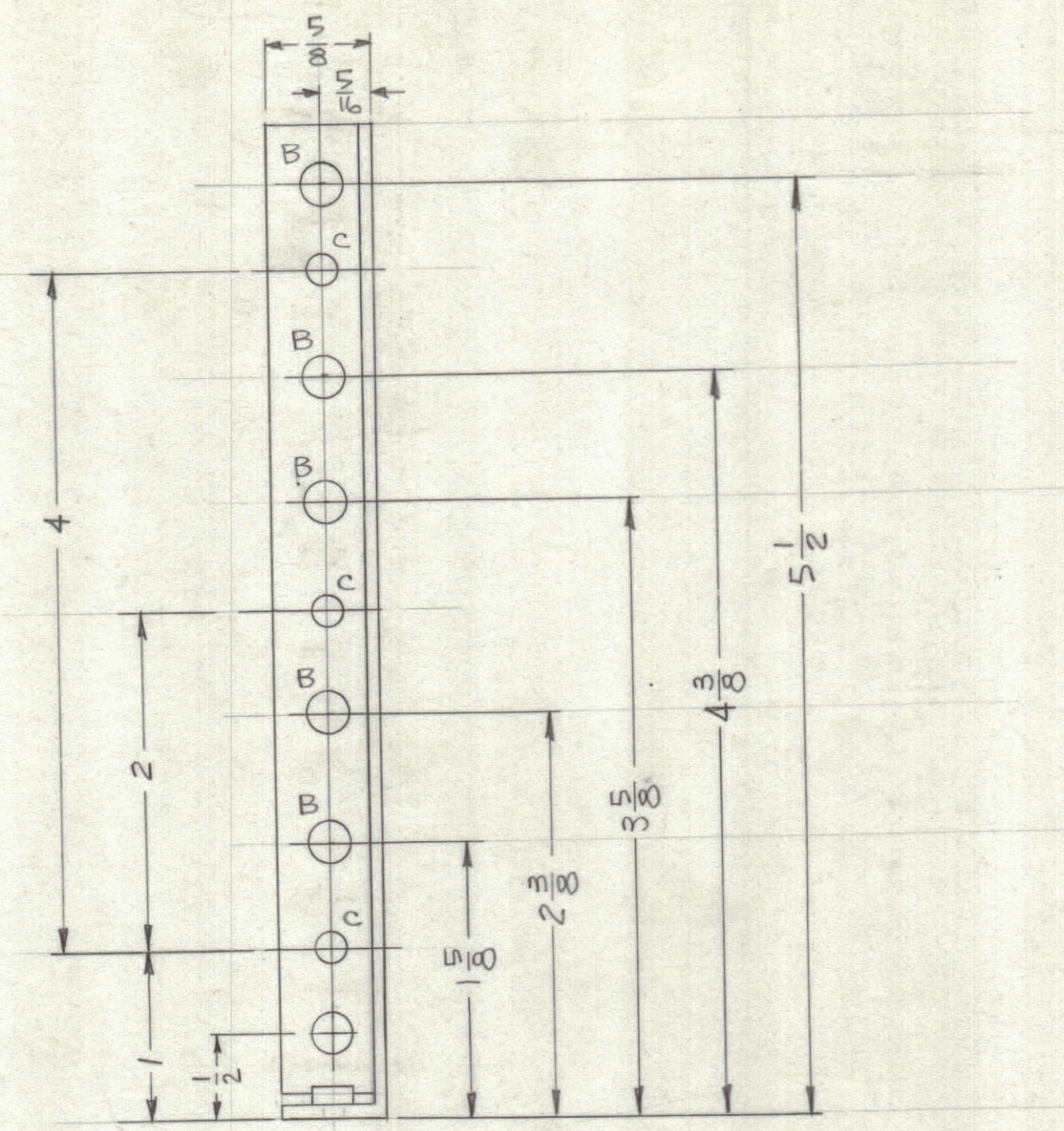
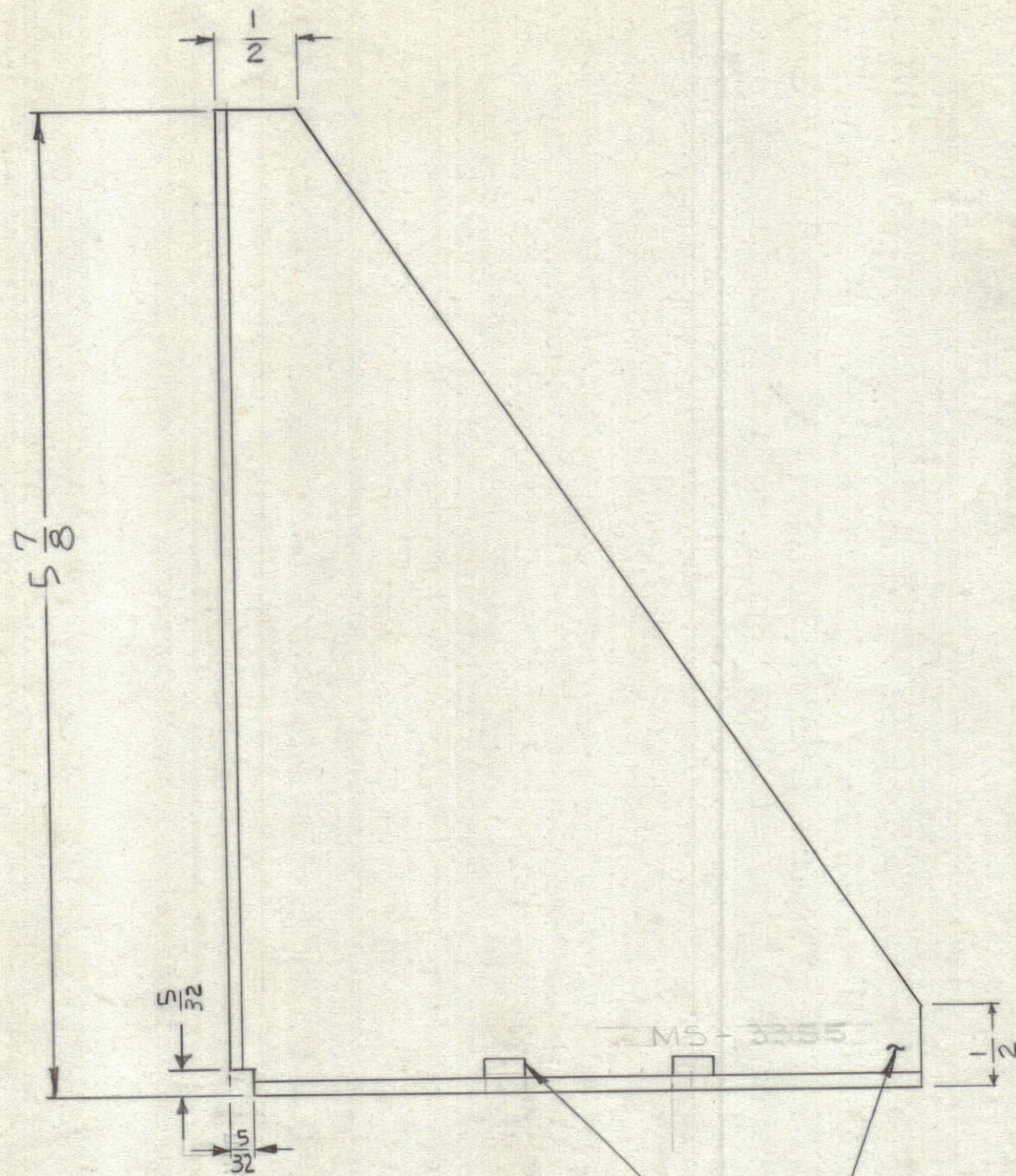


TMC PART NO.	DESCRIPTION
MS-3355-1	RIGHT SIDEPLATE (AS SHOWN)
MS-3355-2	LEFT SIDEPLATE (OPP. HAND)

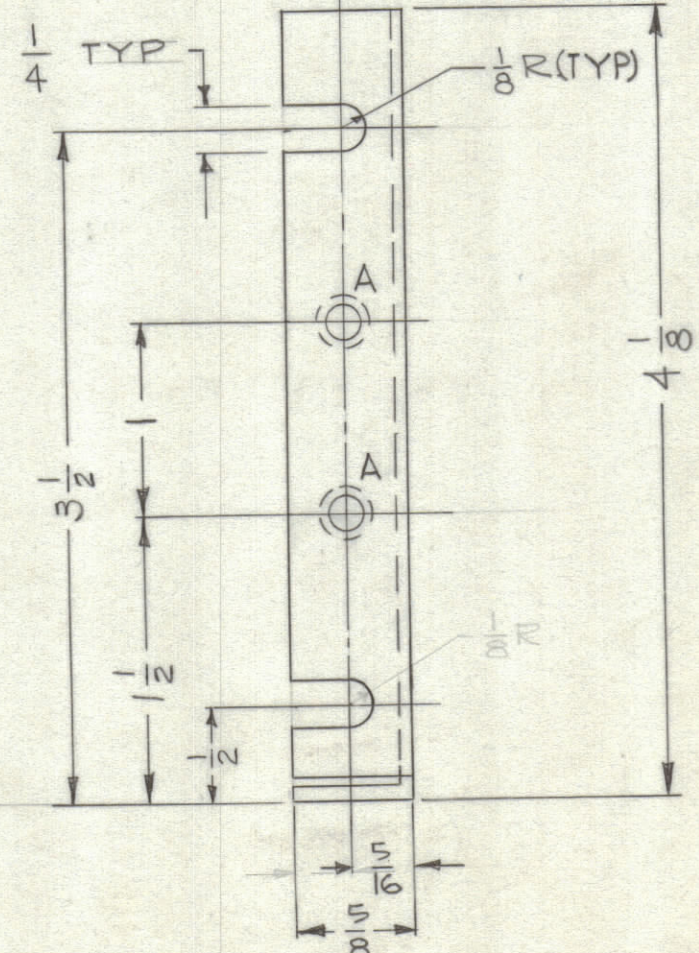
REVISIONS							
ZONE	SYM	DESCRIPTION	DATE	E.M.N. NO.	DRAFT	CHKD	APPD



HOLE LEGEND		
HOLE	DESCRIPTION	REQD
A	.221-.224 DIA	2
B	1/4 DIA	6
C	3/16 DIA	3

METAL STAMP TMC PART NO. 1/8 HIGH GOTHIC. (SEE CHART)

- NOTE:
1. USE MAT'L THICKNESS FOR MAX. BEND RADIUS.
 2. ALL ANGULAR BENDS 90°
 3. MOUNT ITEM #1 IN ALL "A" HOLES AS SHOWN AFTER FINISHING.



REQ'D.	ITEM	PART NUMBER	DESCRIPTION	SYMBOL
2	1	NT-129-0832-4	NUT, SWAGE	A

LIST OF MATERIAL	
MATERIAL	THE TECHNICAL MATERIEL CORP. MAMARONECK, NEW YORK
FINISH	TITLE
.081 THK ALUMINUM 3052-H32	PLATE, SIDE, LEFT & RIGHT
S404 YELLOW IRIDITE	

SCALE	CODE	ASSY. NO.	DATE	DATE
A			5-16-63	9-6-63

DECIMALS	FRACTIONS
.X ± .05	± 1/64
.XX ± .01	ANGLES
.XXX ± .005	± 0° 30'

UNLESS OTHERWISE SPECIFIED	DRAWN	DATE	FINAL APPROVAL	DATE
DIMENSIONS ARE IN INCHES AND INCLUDE CHEMICALLY APPLIED OR PLATED FINISHES	W. JORDAN	9-6-63	BP	

THE CONTENTS OF THIS DRAWING ARE THE EXCLUSIVE PROPERTY OF THE TECHNICAL MATERIEL CORP. ITS UNAUTHORIZED USE OR REPRODUCTION IN WHOLE OR IN PART IS STRICTLY FORBIDDEN.	TOLERANCES	DATE	SHEET	REV. LTR.
		9/6/63	MS-3355	

NOTES

MS-3355