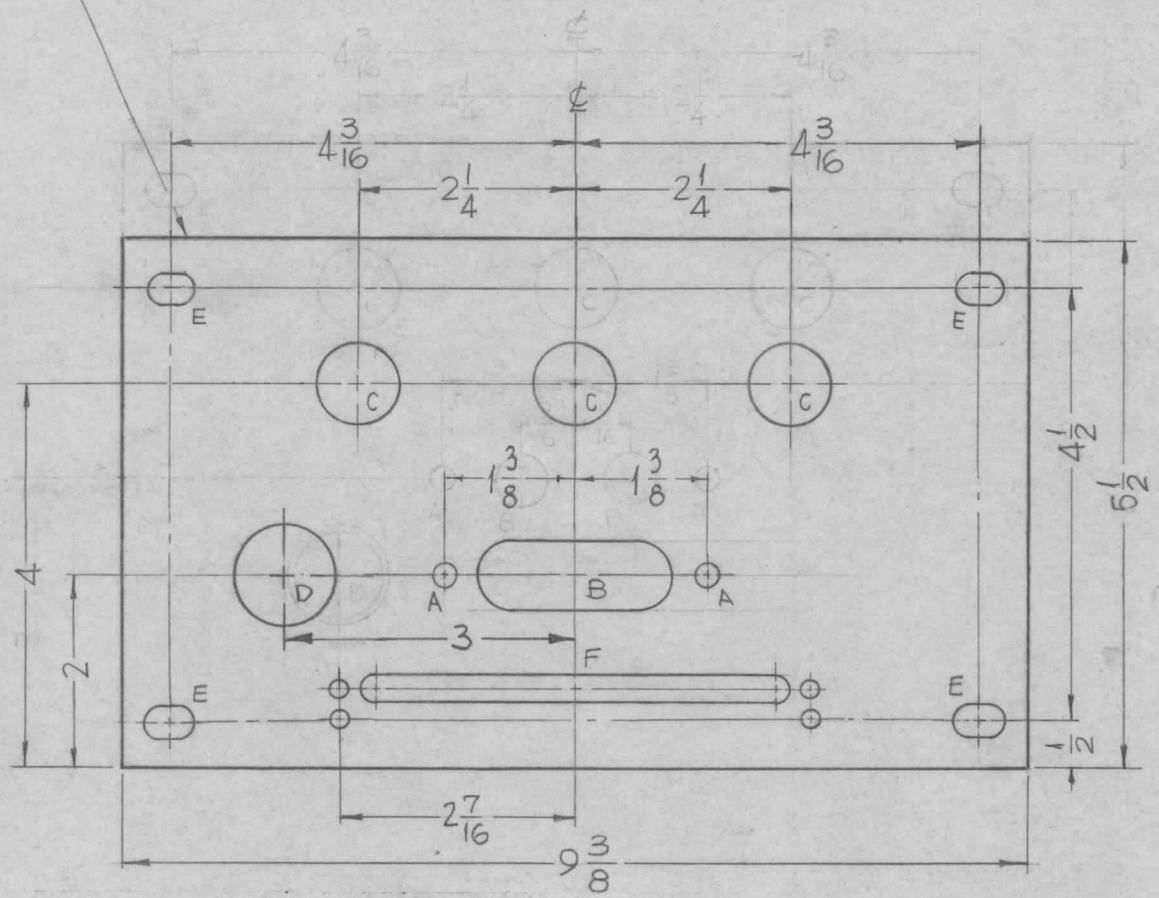


METAL STAMP TMC PART NO WITH LATEST REVISION
 1/8 HIGH GOTHIC.
 ON REAR OF PLATE

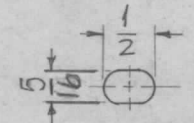
REQ. PER UNIT	USED ON		
	MODEL	ASS'Y. NO.	DATE
1	GPT-200K	AX-395	8-26-63

MS-3330 C

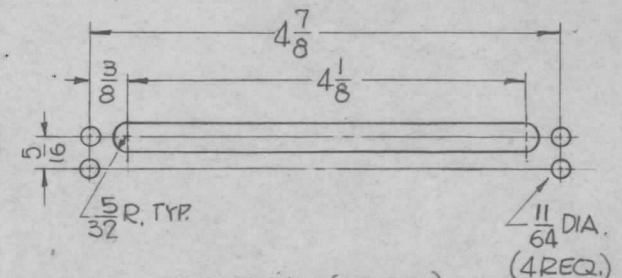


HOLES:

- A - 15/64 DIA. ——— 2 REQ.
- B - 3/4 X 2 SLOT ——— 1 REQ.
- C - 13/16 DIA. ——— 3 REQ.
- D - 13/8 DIA. ——— 1 REQ.



E-DETAIL (4 REQ.)



F-DETAIL (1 REQ.)

REF: LD-1281

C	ON E' DETAIL: 5/16 WPS 5/64	3.24.65	13771	RL	JCB	REQ. ITEM	PART NO.	F-BUDETTI	DESCRIPTION	SYMBOL	
B	CLERICAL CHANGE	10.1.64		9L	@	1/8 THICK		THE TECHNICAL MATERIEL CORP. MAMARONECK. NEW YORK			
A	D-HOLE WAS 7/8 DIA D-HOLE RELOC., DIMS UPDATED	8.13.64	12109	WB	NO.	STOCK SIZE		PLATE, CAPACITOR MTG.			
O	ORIGINAL RELEASE FOR PRODUCTION	5/26/64	0	A.M.		ALUMINUM					
SYM	DESCRIPTION	DATE	CH. NO.	DRAFTS	CHECKER	ENG. APP.	MATERIAL				
UNLESS OTHERWISE SPECIFIED DIMENSIONS ARE IN INCHES AND INCLUDE CHEMICALLY APPLIED OR PLATED FINISHES		SCALE					5052-H32	SRG	aa	Rdc	
		1/2					TYPE & TEMPER	HEAT TREAT. SPEC.	DRAWN	CHECKED	FINAL APPROVAL
DECIMALS .X ± .05 .XX ± .01 .XXX ± .005		FRACTIONS ± 1/64 ANGLES ± 0° 30'		TOLERANCES		CODE A	S404 YELLOW IRIDITE	DRG	an 2/1/64	MS-3330	C
						FINISH & SPEC. NO.	ELEC. DES. APP.	MECH. DES. APP.			