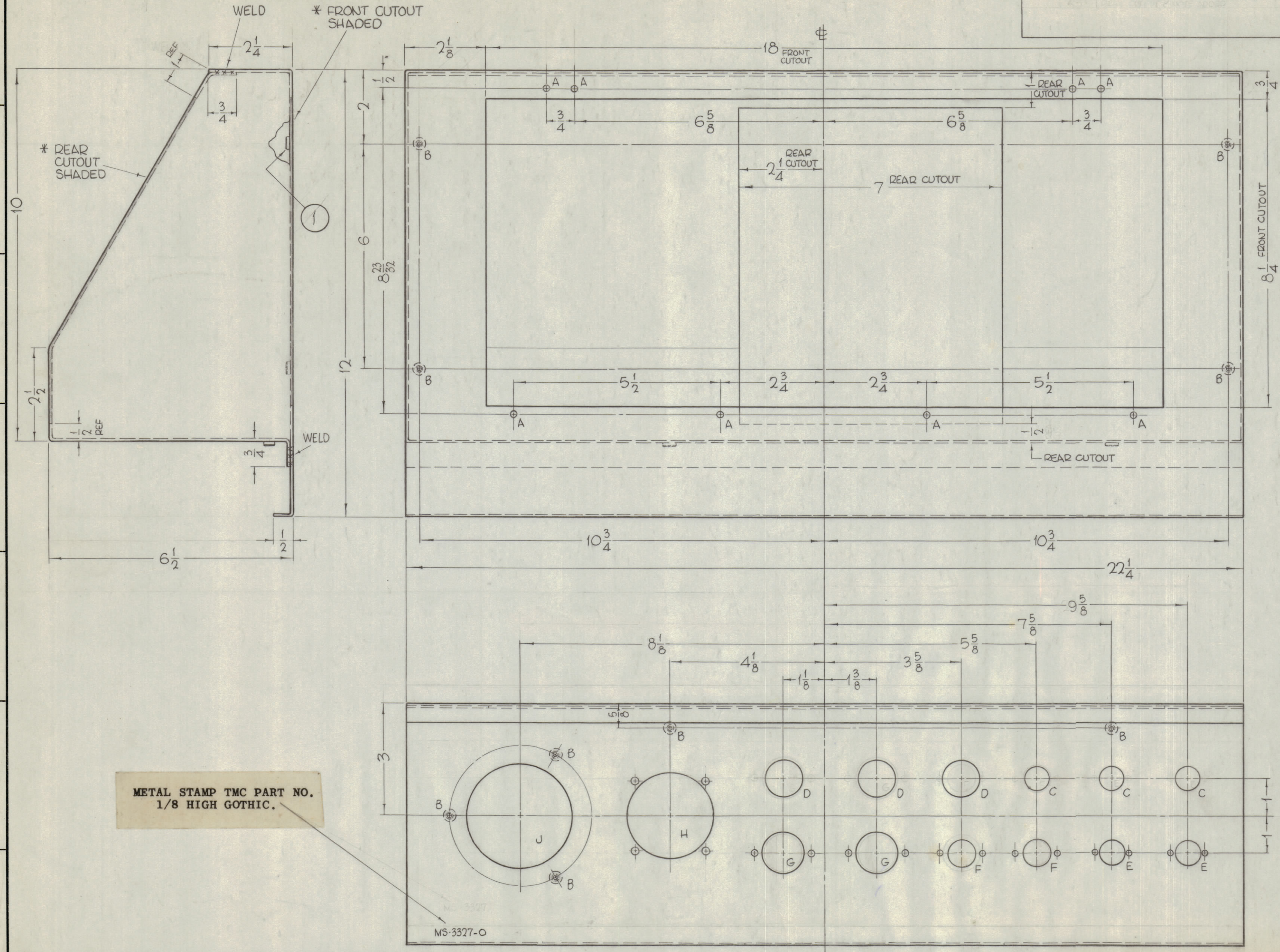
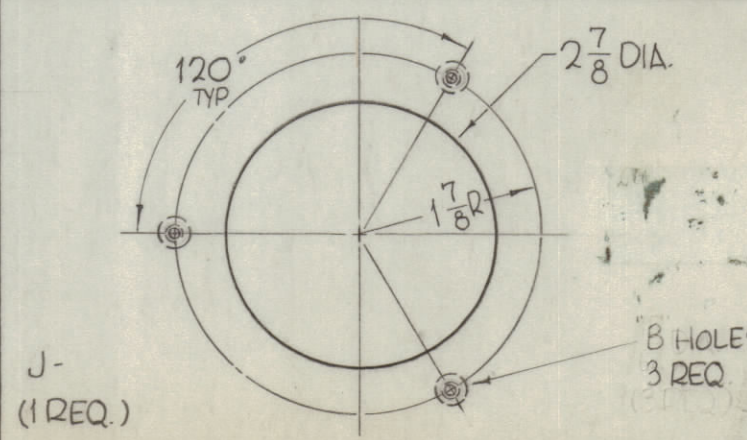
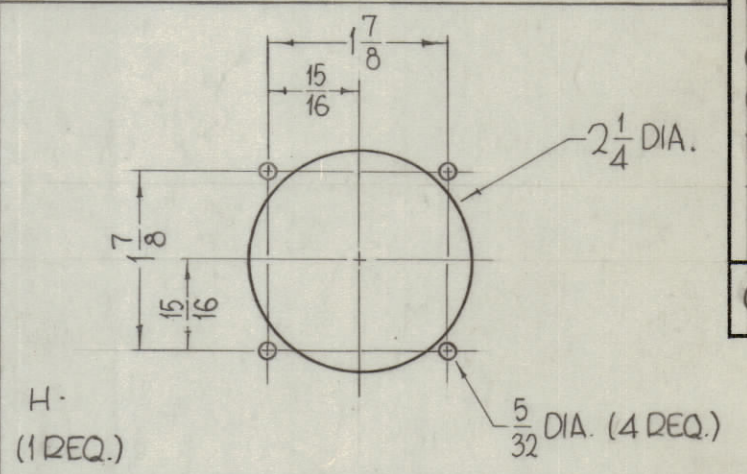
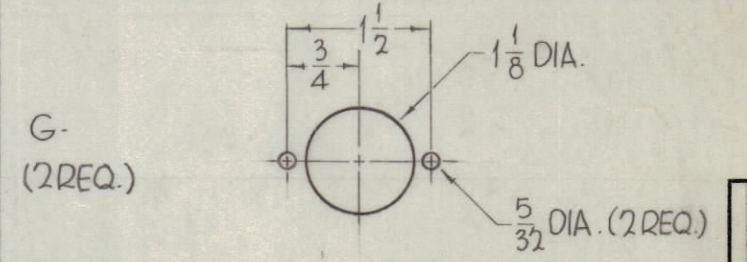
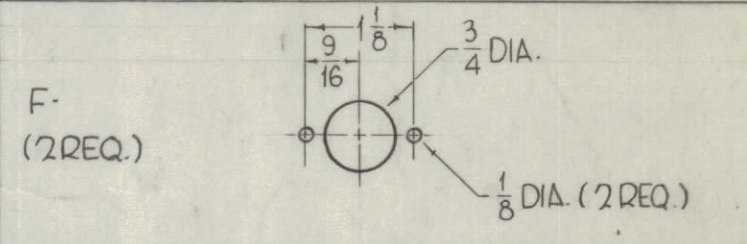
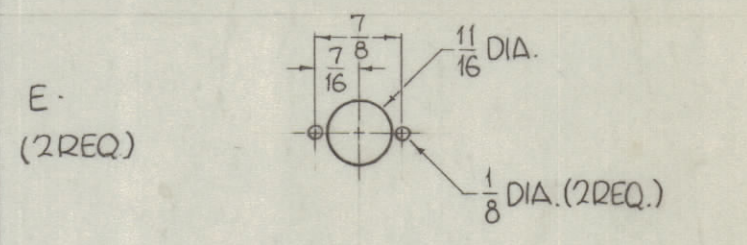


REVISIONS						
ZONE	SYM	DESCRIPTION	DATE	E.M.N. NO.	DRAFT	APPD
0		ORIGINAL RELEASE FOR PRODUCTION	3-26-64		A.M.	



HOLES	REQ
A- 5/32 DIA.	8
B- .250 MIN., .253 MAX. DIA'S FOR MTG. NT-129-1032-4 (ITEM NO. 1)	9
C- 11/16 DIA.	3
D- 1" DIA.	3



MS-3327-0

METAL STAMP TMC PART NO. 1/8 HIGH GOTHIC.

- UNLESS OTHERWISE SPECIFIED:
1. USE MATERIAL THICKNESS FOR MAXIMUM RADIUS ON ALL BENDS.
  2. ALL ANGULAR BENDS 90°.
  3. REMOVE ALL BURRS AND SHARP EDGES.
  4. MOUNT INSERTS AFTER FINISHING.

\* FRONT-CUTOUT APPEARS NEXT TO DIMENSION APPLYING TO SAME AS DOES REAR CUTOUT.

NOTES

REF-TMC DWG. NO. LD-1279

REQ'D.	ITEM	PART NUMBER	DESCRIPTION	SYMBOL
9	1	NT-129-1032-4	NUT, ROUND, SWAGE TYPE	
F. BUDETTI LIST OF MATERIAL				
MATERIAL 16 GAUGE, STEEL, GALVANIZED			THE TECHNICAL MATERIEL CORP. MAMARONECK, NEW YORK	
FINISH S-788 BLACK TEXTURED VINYL			TITLE BOX, SPARE PARTS, STOWAGE	
SCALE 1/2" = 1"		CODE A	ASS'Y. NO. AX-393	
G.T.Y./UNIT 1		MODEL USED ON GPT-200K	DATE 8-27-63	DATE 3/19/64
THE CONTENTS OF THIS DRAWING ARE THE EXCLUSIVE PROPERTY OF THE TECHNICAL MATERIEL CORP. ITS UNAUTHORIZED USE OR REPRODUCTION IN WHOLE OR IN PART IS STRICTLY FORBIDDEN.		UNLESS OTHERWISE SPECIFIED DIMENSIONS ARE IN INCHES AND INCLUDE CHEMICALLY APPLIED OR PLATED FINISHES		DATE 3/25/64
DECIMALS .X ± .05 .XX ± .01 .XXX ± .005	TOLERANCES ± 1/64 ANGLES ± 0° 30'	DRAWN John C Biele		DATE 3/25/64
		CHECKED [Signature]		DATE 6/25/64
		ELECT. DES. [Signature]		DATE [Signature]
		MECH. DES. [Signature]		DATE [Signature]
			FINAL APPROVAL [Signature]	DATE 3/19/64
			SHEET MS-3327-0	REV. LTR.