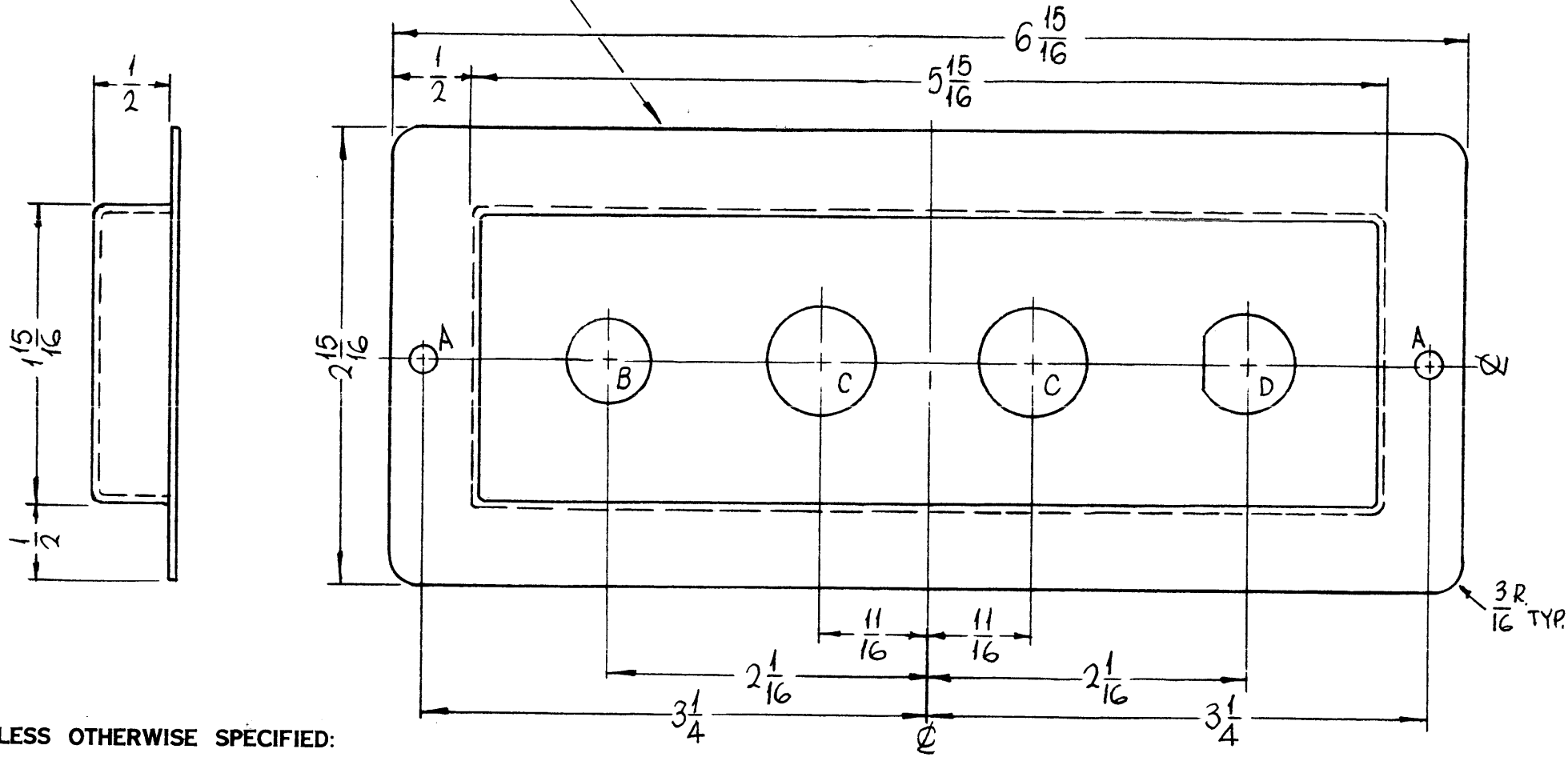


MS 3321

REVISIONS						
SYM	DESCRIPTION	DATE	E.M.N. NO.	DRAFT	CHKD	APPD
X	EXP. RELEASE	12-29-64	X	SRG		
Ø	ORIGINAL RELEASE FOR PRODUCTION	4-22-65	Ø	SRG		

METAL STAMP TMC PART NO. (MS 3321)
1/8 HIGH GOTHIC W/LATEST REV.
LETTER. (ON REAR)

HOLES	DESCRIPTION	REQ.
A	11/64 DIA.	2
B	17/32 DIA.	1
C	11/16 DIA.	2
D	SEE DETAIL	1



FRONT VIEW

UNLESS OTHERWISE SPECIFIED:

1. USE MATERIAL THICKNESS FOR MAXIMUM RADIUS ON ALL BENDS
2. ALL ANGULAR BENDS 90 DEGREES
3. REMOVE ALL BURRS AND SHARP EDGES

- FINISH NOTES:
1. S404 - IRIDITE 14-2 AL-COAT.
 2. S114 - ZINC CHROMATE PRIMER) FRONT AND EDGES ONLY
 3. S220 - RCAF GREY SEMI-GLOSS ENAM)

REF. LD 1276

REQ'D.	ITEM	PART NUMBER	DESCRIPTION	SYMBOL
F. BUDETTI LIST OF MATERIAL				
MATERIAL .051 THICK ALUMINUM 5052-H32			THE TECHNICAL MATERIEL CORP. MAMARONECK, NEW YORK	
FINISH SEE NOTES			TITLE PANEL, FRONT, FUSE HOLDER	
UNLESS OTHERWISE SPECIFIED DIMENSIONS ARE IN INCHES AND INCLUDE CHEMICALLY APPLIED OR PLATED FINISHES			DRAWN SRG	DATE 12-29-64
			CHECKED SRG	DATE 4/15/65
			ELECT. DES.	DATE
			MECH. DES.	DATE
DECIMALS .X ± .05 .XX ± .01 .XXX ± .005			TOLERANCES ± 1/64 ANGLES ± 0° 30'	
THE CONTENTS OF THIS DRAWING ARE THE EXCLUSIVE PROPERTY OF THE TECHNICAL MATERIEL CORP. ITS UNAUTHORIZED USE OR REPRODUCTION IN WHOLE OR IN PART IS STRICTLY FORBIDDEN.			FINAL APPROVAL Ø B MA 4/19/65 MS3321 SHEET	
NOTES			REV. LTR.	

1	TER-25K	
Q'TY./UNIT	MODEL USED ON	ASS'Y. NO.
SCALE 1:1	CODE A	