

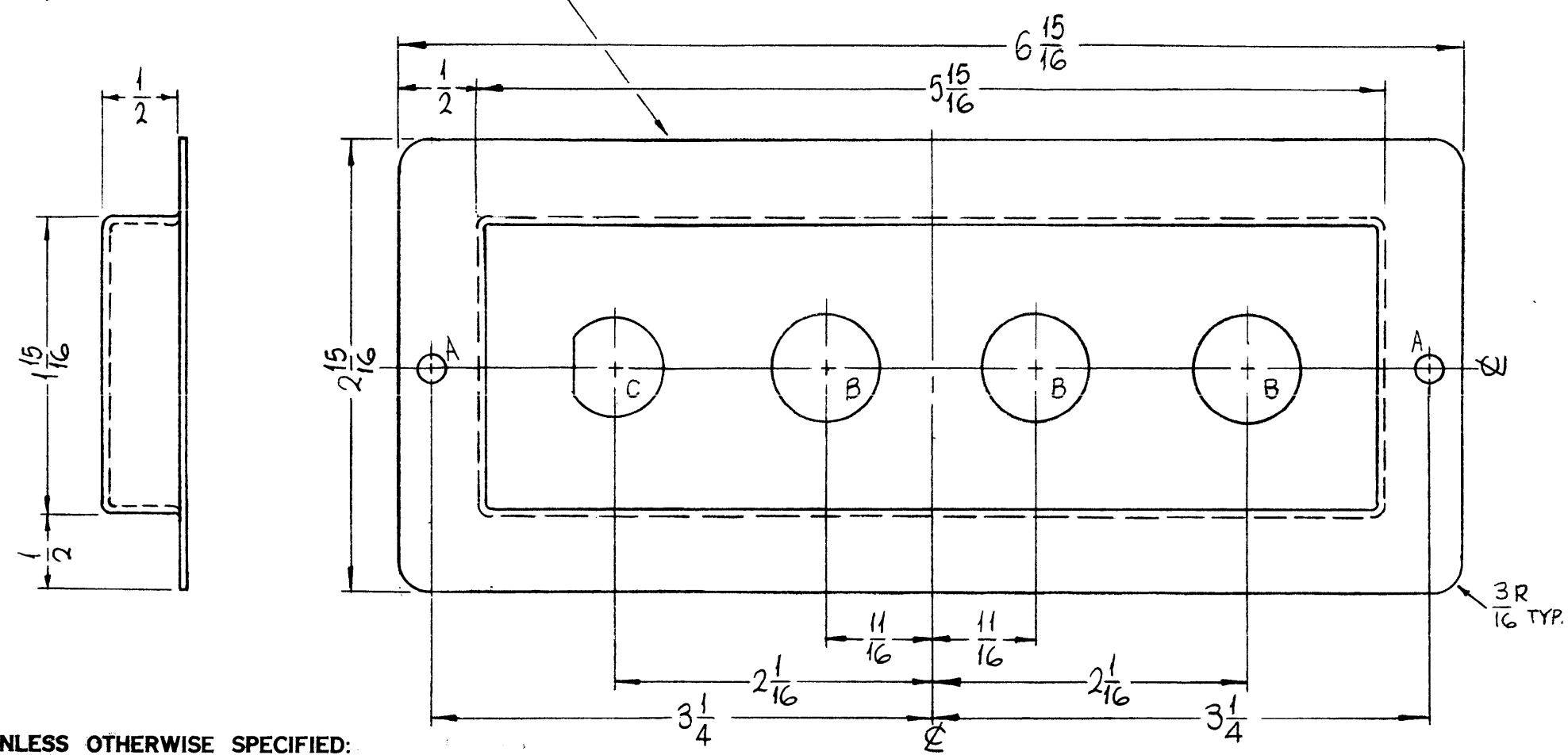
MS 3320

REVISIONS

SYM	DESCRIPTION	DATE	E.M.N. NO.	DRAFT	CHKD	APPD
X	EXP. RELEASE	12-29-64	X	SRG		QRB
Ø	ORIGINAL RELEASE FOR PRODUCTION	4-22-65	Ø	SR		

METAL STAMP TMC PART NO. (MS3320)
1/8 HIGH GOTHIC W/LATEST
REV. LETTER. (ON REAR)

HOLES	DESCRIPTION	REQ.
A	11/64 DIA.	2
B	11/16 DIA.	3
C	SEE DETAIL	1



- UNLESS OTHERWISE SPECIFIED:
- USE MATERIAL THICKNESS FOR MAXIMUM RADIUS ON ALL BENDS
 - ALL ANGULAR BENDS 90 DEGREES.
 - REMOVE ALL BURRS AND SHARP EDGES

- FINISH NOTES:
- S404 - IRIDITE 14-2 AL-COAT.
 - S114 - ZINC CHROMATE PRIMER) FRONT AND
 - S220 - RCAF GREY SEMI-GLOSS ENAM.) EDGES ONLY

FRONT VIEW

REF. LD 1275

REQ'D.	ITEM	PART NUMBER	DESCRIPTION	SYMBOL
F. BUDETTI LIST OF MATERIAL				
MATERIAL .051 THICK ALUMINUM 5052-H32			THE TECHNICAL MATERIEL CORP. MAMARONECK, NEW YORK	
FINISH SEE NOTES			TITLE PANEL, FRONT, FUSE HOLDER	
UNLESS OTHERWISE SPECIFIED DIMENSIONS ARE IN INCHES AND INCLUDE CHEMICALLY APPLIED OR PLATED FINISHES			DRAWN SRG	DATE 12-29-64
DECIMALS .X ± .05 .XX ± .01 .XXX ± .005			CHECKED QRB	DATE 4/15/65
FRACTIONS ± 1/64 ANGLES ± 0° 30'			ELECT. DES. SR	DATE
TOLERANCES			MECH. DES. SR	DATE
THE CONTENTS OF THIS DRAWING ARE THE EXCLUSIVE PROPERTY OF THE TECHNICAL MATERIEL CORP. ITS UNAUTHORIZED USE OR REPRODUCTION IN WHOLE OR IN PART IS STRICTLY FORBIDDEN.			FINAL APPROVAL QRB MS3320	
			DATE 6/9/67	
			REV. LTR. Ø	
			SHEET	

NOTES

Q'TY./UNIT	MODEL USED ON	ASS'Y. NO.
1	TER -25K	
SCALE	CODE	
1:1	A	