

THE CONTENTS OF THIS DRAWING ARE THE EXCLUSIVE PROPERTY OF THE TECHNICAL MATERIEL CORP. ITS UNAUTHORIZED USE FOR REPRODUCTION IN WHOLE OR IN PART IS STRICTLY FORBIDDEN.

REQ. PER UNIT

MODEL  
1 TER-25K-600B

USED ON

ASS'Y. NO.

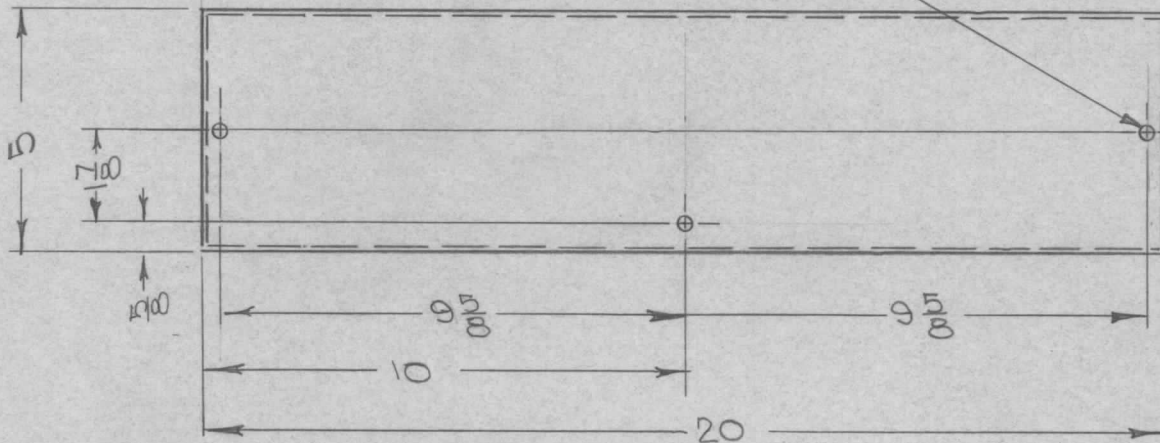
DATE

8-2-63

MS-3318

Ø

$\frac{15}{64}$  DIA-3HOLES



METAL STAMP TMC PART NO. 1/8 HIGH GOTHIC. W/LATEST REV. LETTER.

UNLESS OTHERWISE SPECIFIED:

1. USE MATERIAL THICKNESS FOR MAXIMUM RADIUS ON ALL BENDS.
2. ALL ANGULAR BENDS 90°.
3. REMOVE ALL BURRS AND SHARP EDGES.

REQ.	ITEM	PART NO.	F. BUDETTI DESCRIPTION				SYMBOL	
		18 GA.	THE TECHNICAL MATERIEL CORP.					
		STOCK SIZE	MAMARONECK, NEW YORK					
Ø	ORIGINAL RELEASE FOR PRODUCTION	6-9-65	MA	JC	STEEL		BOX, FILLER, SIDE	
SYM	DESCRIPTION	DATE	CH. NO.	DRAFTS	CHECKER	ENG. APP.		
UNLESS OTHERWISE SPECIFIED DIMENSIONS ARE IN INCHES AND INCLUDE CHEMICALLY APPLIED OR PLATED FINISHES		SCALE	1:2					
DECIMALS	TOLERANCES	FRACTIONS	CODE	TYPE & TEMPER				
.X ± .05		± 1/64		HEAT TREAT. SPEC.				
.XX ± .01		ANGLES		DRAWN				
.XXX ± .005		± 0° 30'		CHECKED				
				FINAL APPROVAL				
				COPPER FLASH				
				FINISH & SPEC. NO.				
				ELEC. DES. APP.				
				MECH. DES. APP.				
				MS-3318				Ø