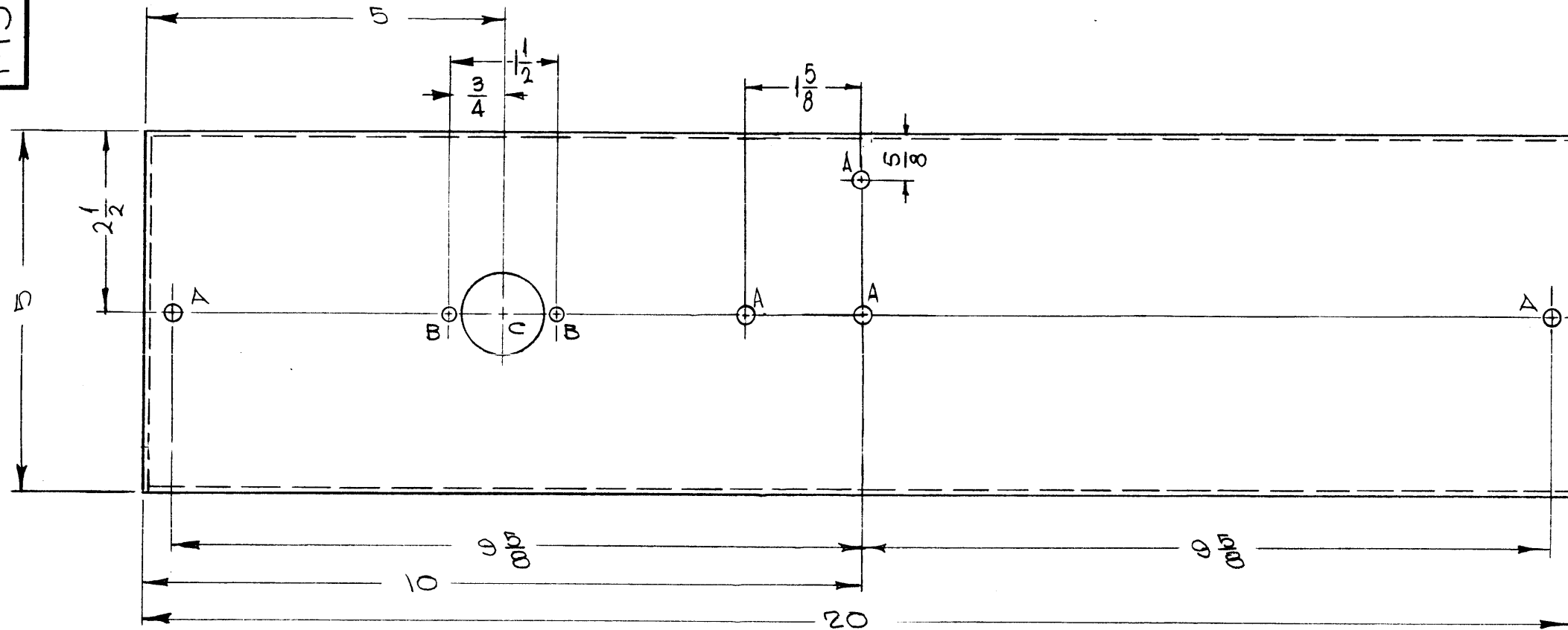
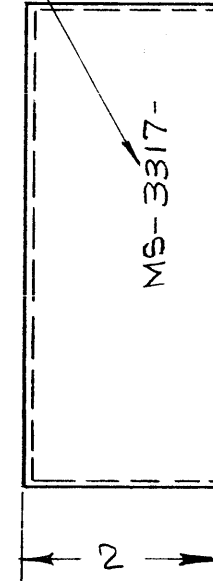


MS-3317

THE CONTENTS OF THIS DRAWING ARE THE EXCLUSIVE PROPERTY OF THE TECHNICAL MATERIEL CORP. ITS UNAUTHORIZED USE OR REPRODUCTION IN WHOLE OR IN PART IS STRICTLY FORBIDDEN.



METAL STAMP TMC PART NO.  
1/8 HIGH GOTHIC.  
W/LATEST REV. LETTER.



- HOLE
- A - 15/64 DIA - 5 REQ
  - B - 11/64 DIA - 2 REQ
  - C - 1/8 DIA - 1 REQ

- UNLESS OTHERWISE SPECIFIED:
1. USE MATERIAL THICKNESS FOR MAXIMUM RADIUS ON ALL BENDS.
  2. ALL ANGULAR BENDS 90°.
  3. REMOVE ALL BURRS AND SHARP EDGES.

LD-1722

Ø	ORIGINAL RELEASE FOR PRODUCTION	6-9-65	AA	JC		
X <sub>1</sub>	(2) 3/4 DIA HOLES DELETED, 2 A HOLES ADDED	1-4-64	X <sub>1</sub>	SRG		
SYM	DESCRIPTION	DATE	CH. NO.	DRAFTS	CHECKER	ENG. APP.
UNLESS OTHERWISE SPECIFIED:		SCALE: 1:2				
DIMENSIONS ARE IN INCHES		MAXIMUM ALLOWABLE TOLERANCES HAVE BEEN DETERMINED AND ANY DEVIATIONS WILL BE CAUSE FOR REJECTION.				
TOLERANCES ON FRACTIONS ± 1/64 DECIMALS ± .05 ANGLES ± 1/2°		REMOVE ALL BURRS AND SHARP EDGES				

REQ. PER UNIT	1	TER-25K-60DB			
		MODEL	SECTION	ASS'Y. NO.	DATE
		USED ON			

REQ. ITEM	PART NO.	F. BUDETTI	DESCRIPTION	SYMBOL
18 GA.			THE TECHNICAL MATERIEL CORP.	
STOCK SIZE			MAMARONECK, NEW YORK	
STEEL			CHASSIS COMPONENT MOUNTING	
MATERIAL				
		<i>R. Chinn</i>		
		8-2-63		
TYPE & TEMPER	HEAT TREAT. SPEC.	DRAWN	CHECKED	FINAL APPROVAL
COPPER FLASH				<i>[Signature]</i>
FINISH & SPEC. NO.	ELEC. DES. APP.	MECH. DES. APP.	MS-3317	Ø