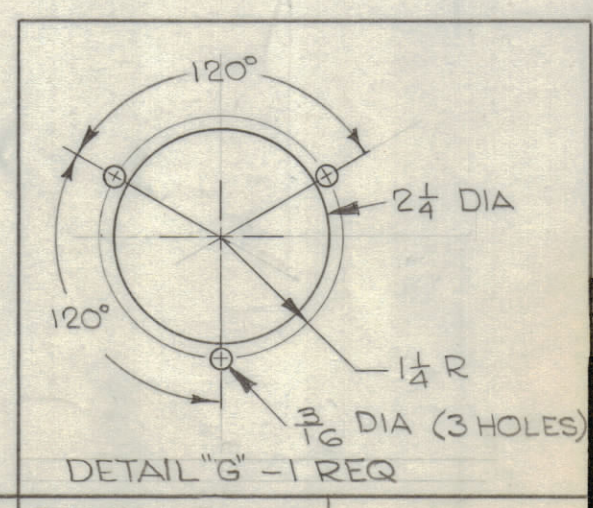
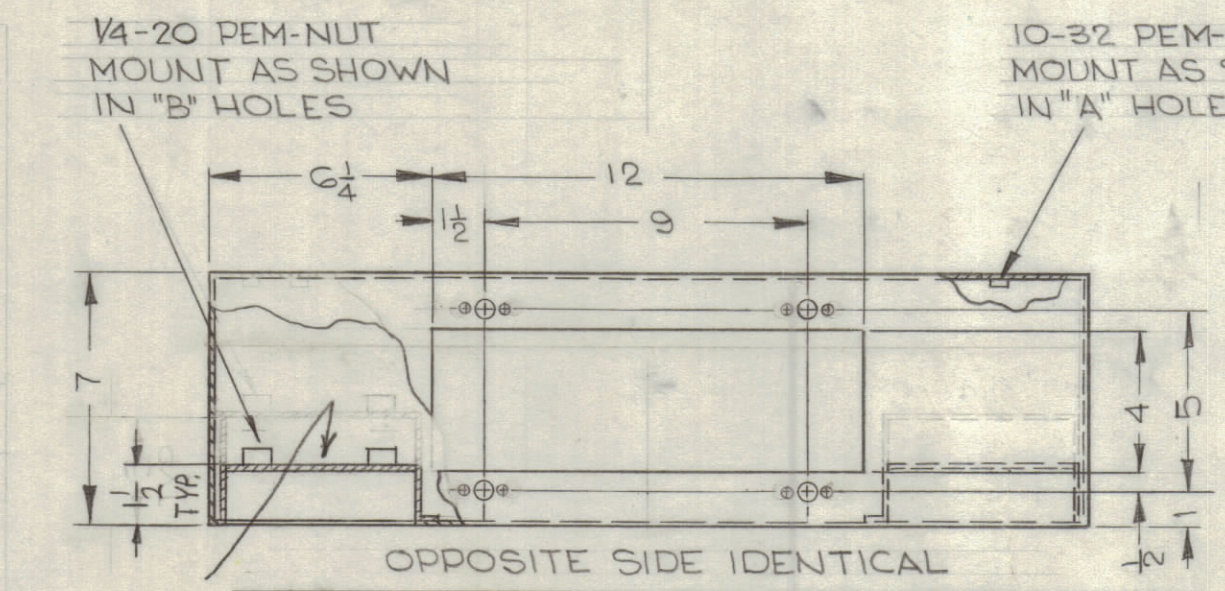
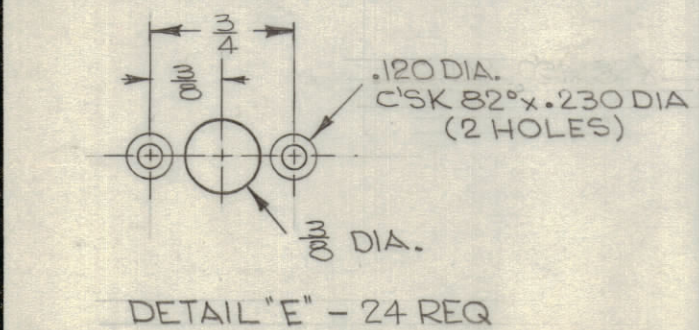
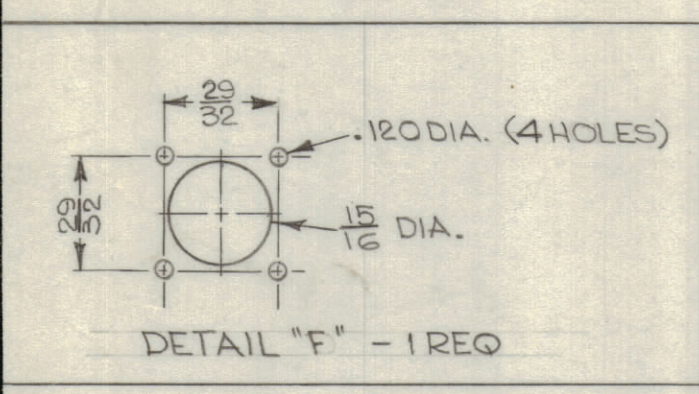
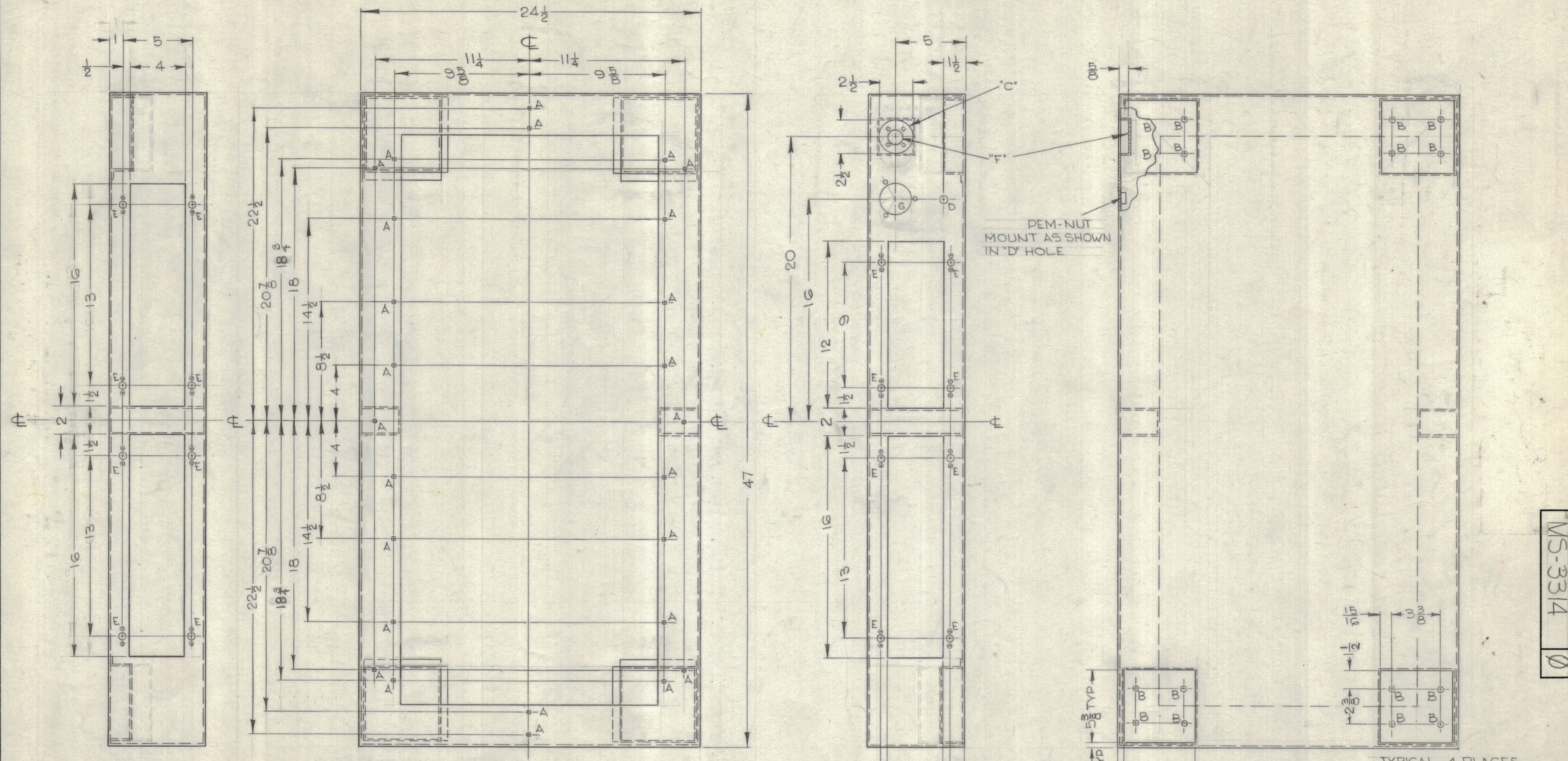


REVISIONS						
ZONE	SYM	DESCRIPTION	DATE	E.M.N. NO.	DRAFT	CHKD
	X1	B HOLE BRACKETS WERE 5 1/4 SQ. X 3" HIGH.	12-30-64	X1	SRG	
	Ø	ORIGINAL RELEASE FOR PRODUCTION	6-9-65		JC	



METAL STAMP
TMC PT. NO.
1/8" HIGH
GOTHIC WITH
LATEST REV
LETTER

UNLESS OTHERWISE SPECIFIED:

1. USE MATERIAL THICKNESS FOR MAXIMUM RADIUS ON ALL BENDS.
2. ALL ANGULAR BENDS 90°.
3. REMOVE ALL BURRS AND SHARP EDGES.

NOTES

THE CONTENTS OF THIS DRAWING ARE THE EXCLUSIVE PROPERTY OF THE TECHNICAL MATERIEL CORP. ITS UNAUTHORIZED USE OR REPRODUCTION IN WHOLE OR IN PART IS STRICTLY FORBIDDEN.

PEM-NUT
MOUNT AS SHOWN
IN "D" HOLE

TYPICAL-4 PLACES

LETTER	DESCRIPTION	QUANTITY
A	1 5/64 DIA	26 REQ
B	9/32 DIA	16 REQ
C	2 1/2 DIA	1 REQ
D	9/16 DIA	1 REQ
E	SEE DETAIL	24 REQ
F	SEE DETAIL	1 REQ
G	SEE DETAIL	1 REQ

REQ'D.	ITEM	PART NUMBER	DESCRIPTION	SYMBOL
F. BUDETTI LIST OF MATERIAL				
MATERIAL		STEEL, 18 GA		
FINISH		S520 - BLUE GREY TEX. VINYL PAINT.		
TITLE		BASE, MOUNTING, DUMMY LOAD		
DRAWN	DATE	FINAL APPROVAL	DATE	
CHECKED	DATE			
ELECT. DES.	DATE	MS-3314		Ø
MECH. DES.	DATE	SHEET		REV. LTR.

MS-3314