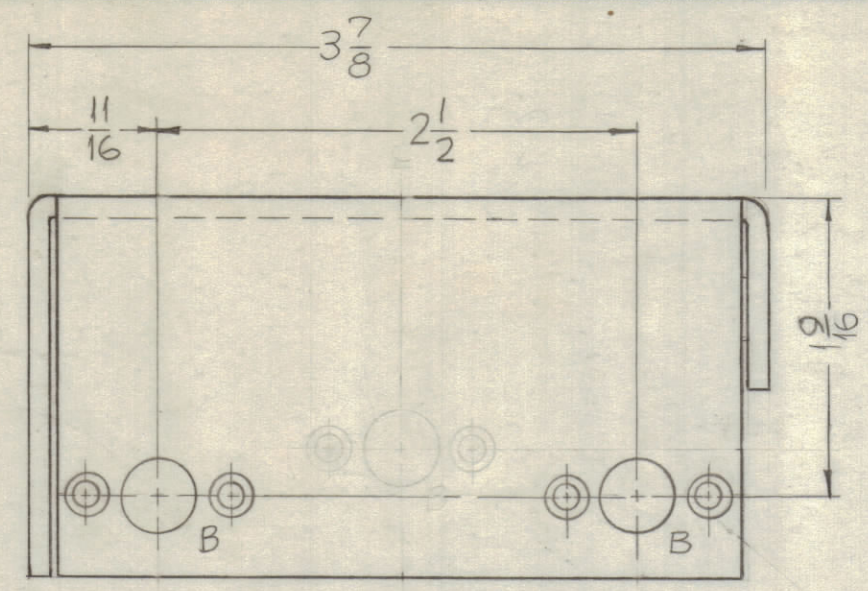
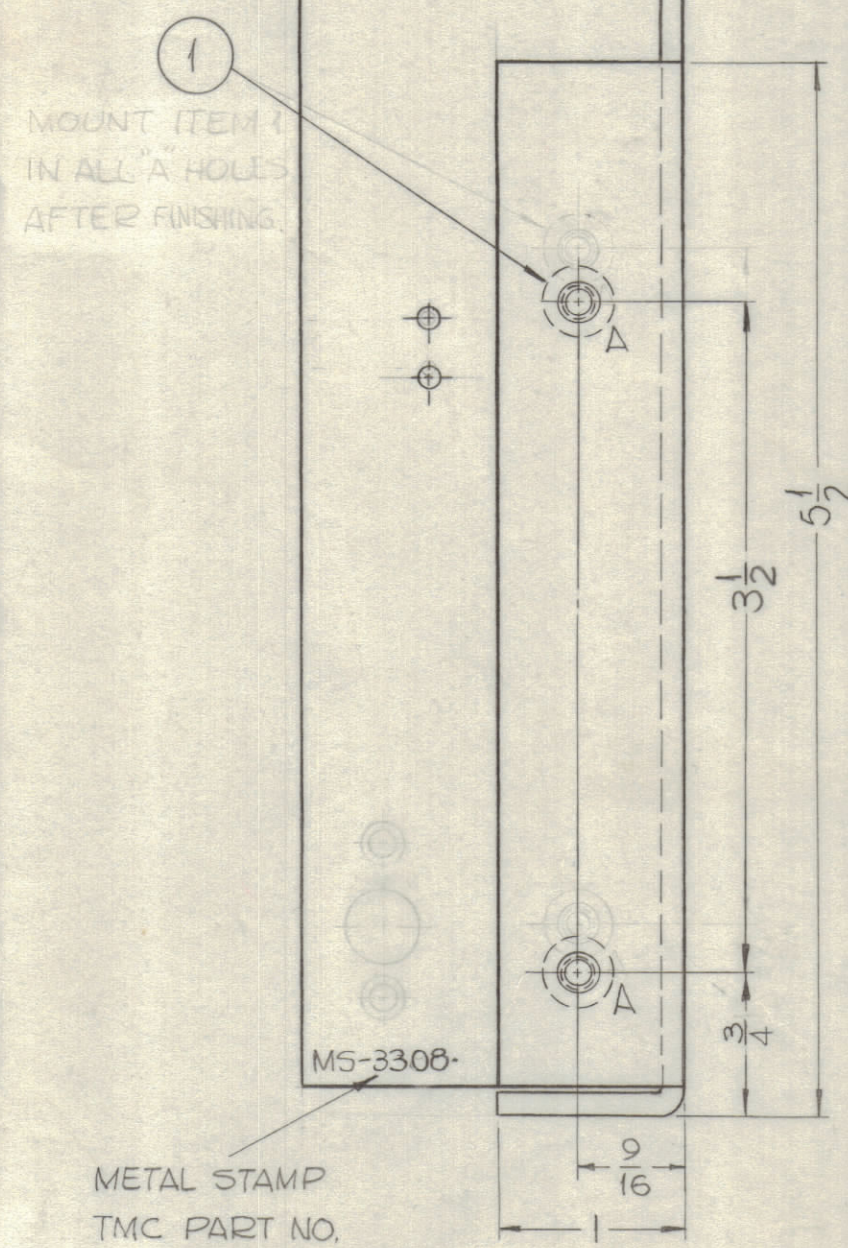
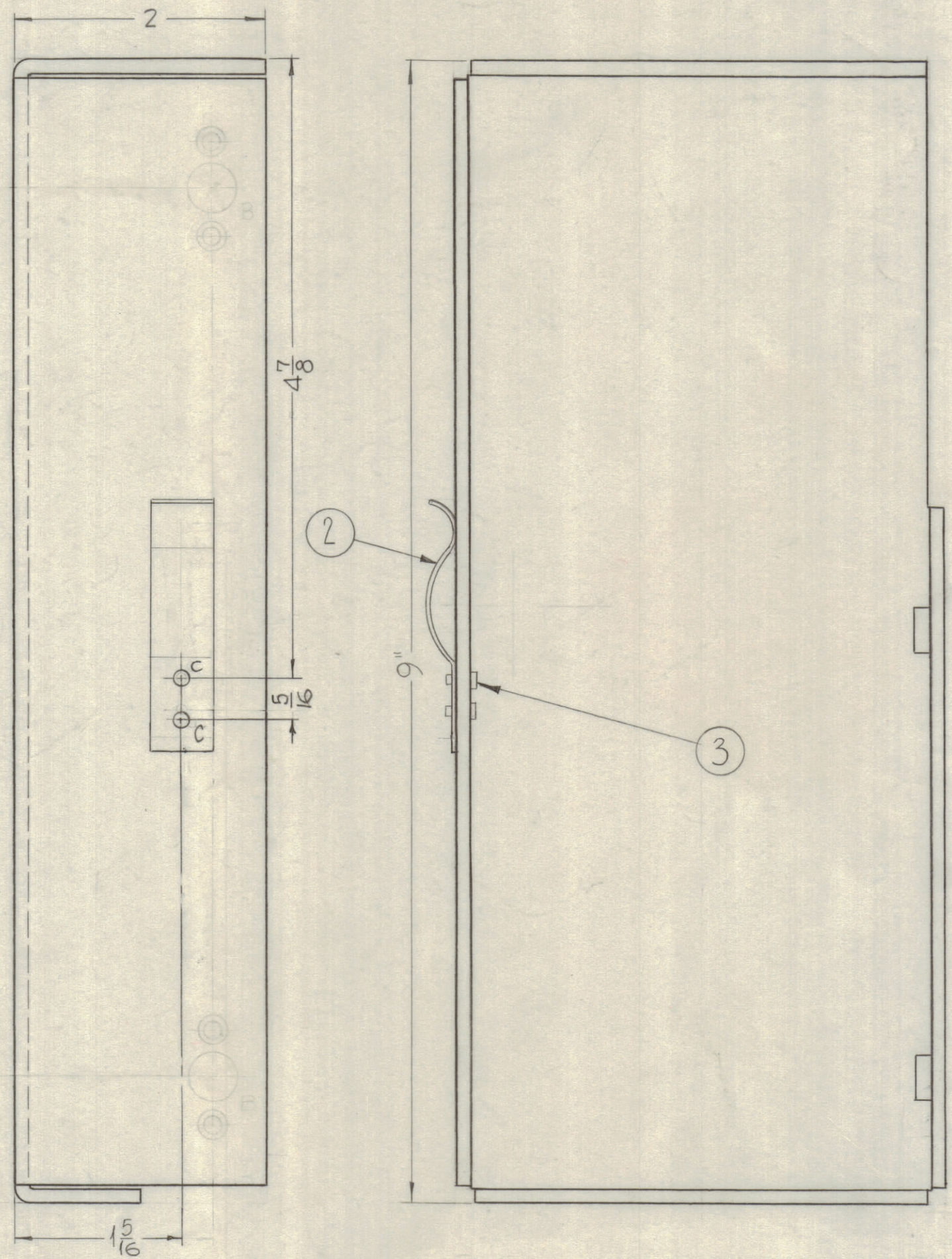


REVISIONS						
ZONE	SYM	DESCRIPTION	DATE	E.M.N. NO.	DRAFT	CHKD
	X1	2" HOLES ADDED, 2" HOLES DELETED				
	X2	5/16 DIM. WAS 1/4, C HOLES WERE .067, ITEM 3 WAS EY-100-7	5-13-64		SRG	
	D	ORIGINAL RELEASE FOR PRODUCTION	5-18-64		SRG	

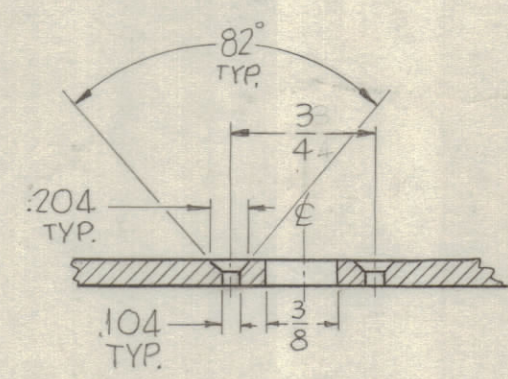


MOUNT ITEM 1 IN ALL 'A' HOLES AFTER FINISHING.

HOLES:
 A ~ .250-.253 DIA. — 2 REQ'D
 B ~ SEE DETAIL
 C ~ .125 DIA. — 2 REQ'D



METAL STAMP
 TMC PART NO.
 1/8 HIGH GOTHIC.
 W/LATEST REV.
 LETTER.



B-DETAIL
(2 REQ.)

NOTES:
 USE MATERIAL THICKNESS FOR MAX. RADIUS ON ALL BENDS.
 ALL BENDS 90°.

- UNLESS OTHERWISE SPECIFIED:
1. USE MATERIAL THICKNESS FOR MAXIMUM RADIUS ON ALL BENDS.
 2. ALL ANGULAR BENDS 90°.
 3. REMOVE ALL BURRS AND SHARP EDGES.
 4. MOUNT INSERTS AFTER FINISHING.

NOTES

1	GPT-200K	AX-395
QTY./UNIT	MODEL USED ON	ASS'Y. NO.
SCALE 1:1	CODE A	

THE CONTENTS OF THIS DRAWING ARE THE EXCLUSIVE PROPERTY OF THE TECHNICAL MATERIEL CORP. ITS UNAUTHORIZED USE OR REPRODUCTION IN WHOLE OR IN PART IS STRICTLY FORBIDDEN.

REQ'D.	ITEM	PART NUMBER	DESCRIPTION	SYMBOL
2	3	EY-100-2	EYLET, FLAT FLANGE	
1	2	MS-3546	SPRING, CLIP	
2	1	NT-129-1032-6	NUT ROUND, SWAGE TYPE	

F. BUDETTI		LIST OF MATERIAL			
MATERIAL		THE TECHNICAL MATERIEL CORP. MAMARONECK, NEW YORK			
1/8 THICK ALUMINUM 5052 H-32		TITLE BRACKET SHIELD MTG. RIGHT			
FINISH		DRAWN	DATE	FINAL APPROVAL	DATE
UNLESS OTHERWISE SPECIFIED DIMENSIONS ARE IN INCHES AND INCLUDE CHEMICALLY APPLIED OR PLATED FINISHES		SRG	4-24-63	SRG	
DECIMALS .X ± .05 .XX ± .01 .XXX ± .005		CHECKED	DATE	DATE	
FRACTIONS ± 1/64 ANGLES ± 0° 30'		DATE	DATE	DATE	
TOLERANCES		MECH. DES.	DATE	DATE	
		SRG	5/13/64	MS-3308	
		DATE	DATE	DATE	
		DATE	DATE	DATE	
		DATE	DATE	DATE	

MS-3308