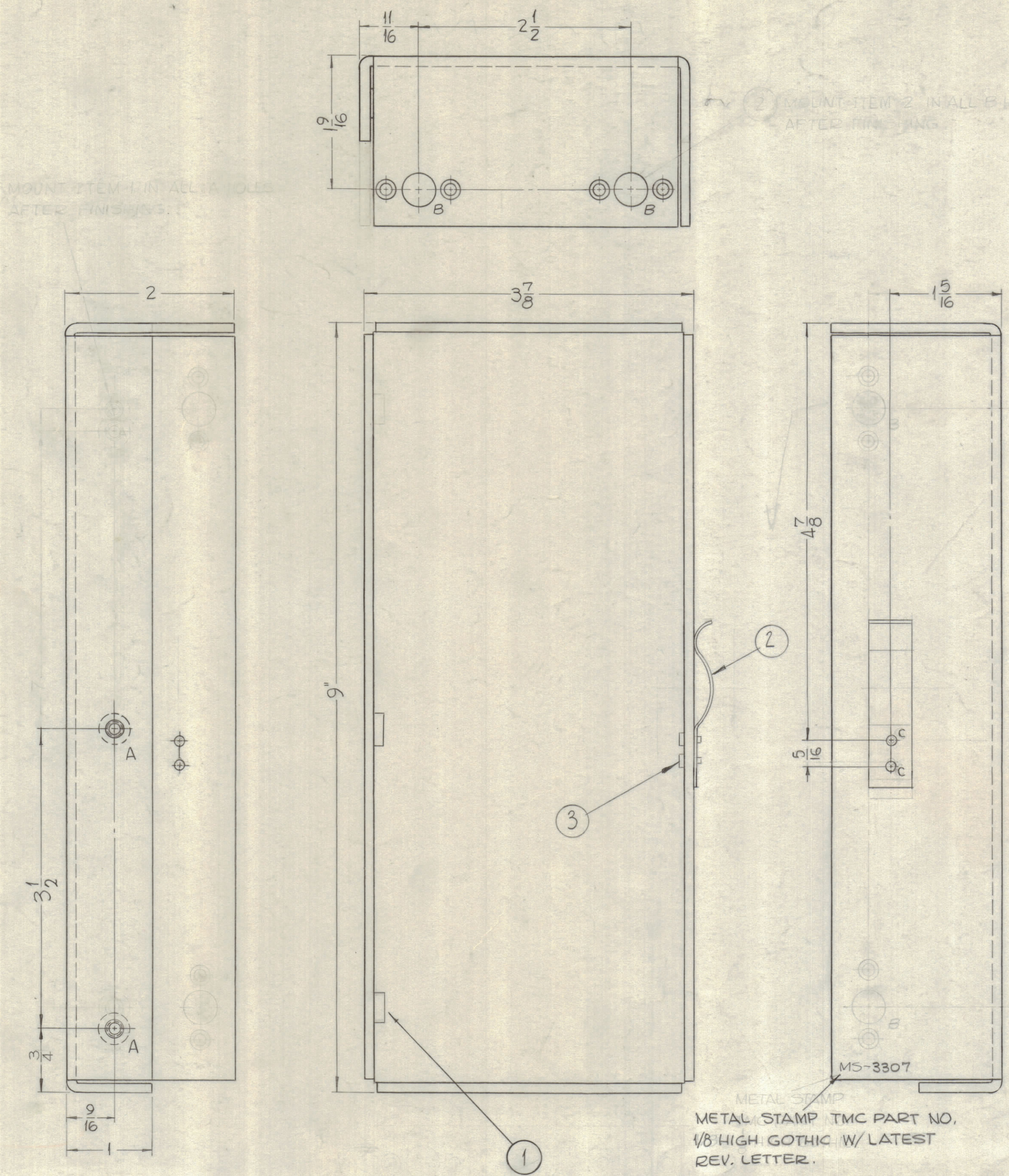
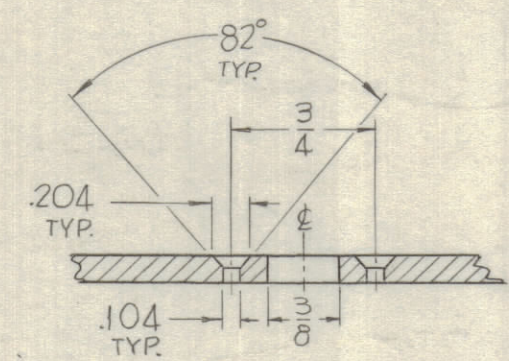


REVISIONS						
ZONE	SYM	DESCRIPTION	DATE	E.M.N. NO.	DRAFT	CHKD
X2		2"C HOLES ADDED, 2"B HOLES DELETED				
X3		DIM 5/16 WAS 1/4; C HOLES WERE .067; ITEM 3 WAS EV-100-7	5-13-64		SRG	
Ø		ORIGINAL RELEASE FOR PRODUCTION	5-18-64		SRG	



HOLES:
 A ~ .250-.253 DIA. — 2 REQ.
 B ~ SEE DETAIL
 C ~ .125 DIA. 2 REQ.



B-DETAIL
(2 REQ.)

- UNLESS OTHERWISE SPECIFIED:
1. USE MATERIAL THICKNESS FOR MAXIMUM RADIUS ON ALL BENDS.
 2. ALL ANGULAR BENDS 90°.
 3. REMOVE ALL BURRS AND SHARP EDGES.
 4. MOUNT INSERTS AFTER FINISHING.

METAL STAMP
 METAL STAMP TMC PART NO.
 1/8 HIGH GOTHIC W/LATEST
 REV. LETTER.

1	GPT-200K	AX-395
Q'TY./UNIT	MODEL USED ON	ASS'Y. NO.
SCALE 1"=1"	CODE A.	

THE CONTENTS OF THIS DRAWING ARE THE EXCLUSIVE PROPERTY OF THE TECHNICAL MATERIEL CORP. ITS UNAUTHORIZED USE OR REPRODUCTION IN WHOLE OR IN PART IS STRICTLY FORBIDDEN.

REQ'D.	ITEM	PART NUMBER	DESCRIPTION	SYMBOL
2	3	EY-100-2	EYLET, FLAT FLANGE	
1	2	MS-3546	SPRING, CLIP	
2	1	NT-129-1032-6	NUT ROUND, SWAGE TYPE	

F. BUDETTI		LIST OF MATERIAL	
MATERIAL 1/8 THICK ALUMINUM 5052 H-32		THE TECHNICAL MATERIEL CORP. MAMARONECK, NEW YORK	
FINISH		TITLE BRACKET SHIELD MTG. LEFT	
DRAWN SRG	DATE 4-26-63	FINAL APPROVAL	DATE
CHECKED	DATE		
ELECT. DES.	DATE 3/11/64	MS-3307	
MECH. DES.	DATE		
DECIMALS .X ± .05 .XX ± .01 .XXX ± .005	FRACTIONS ± 1/64 ANGLES ± 0° 30'	SHEET	REV. LTR.

NOTES

MS-3307