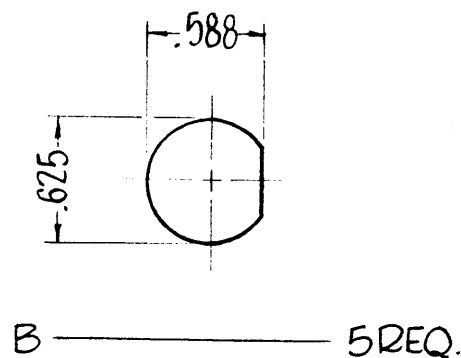


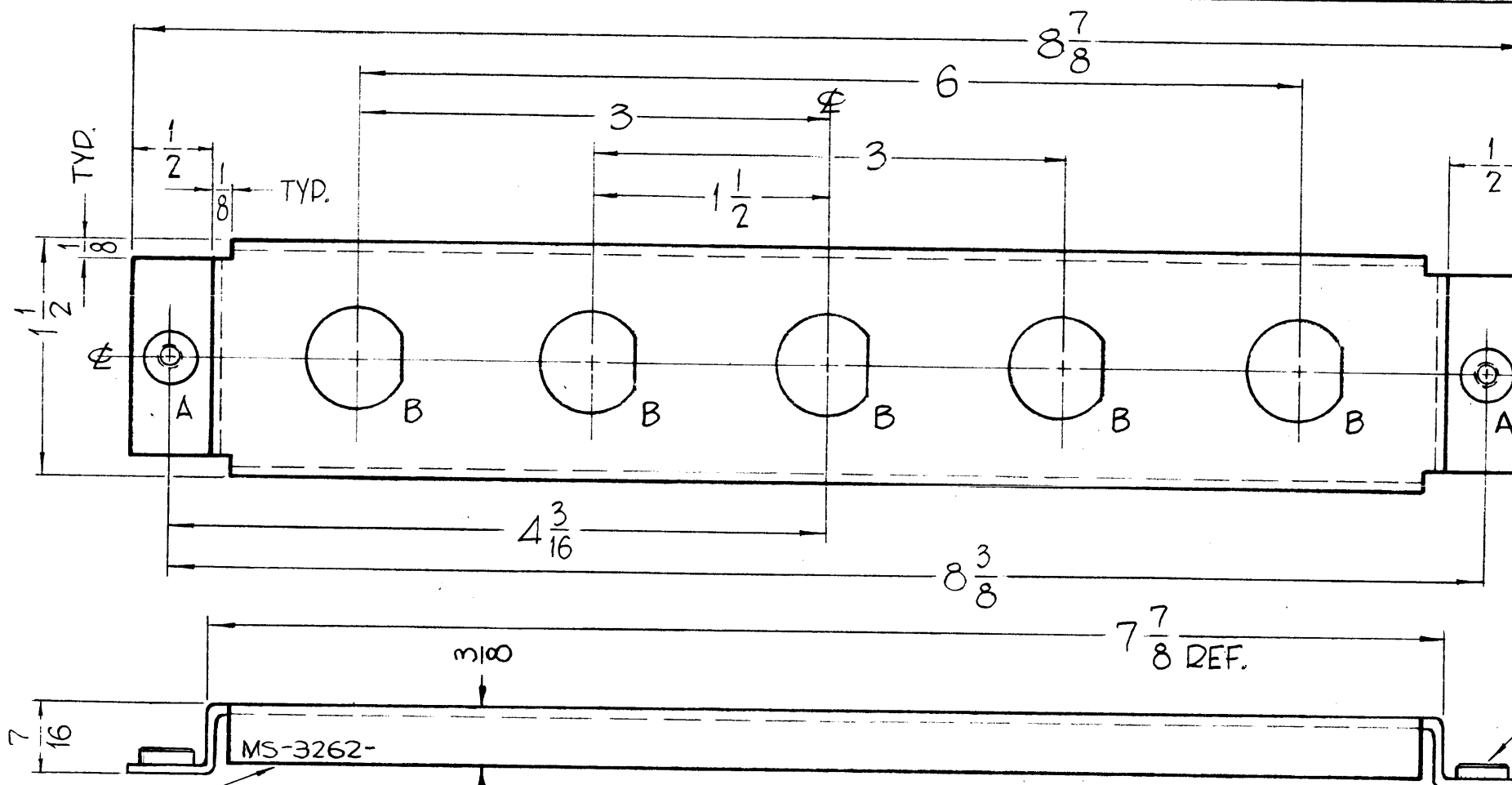
HOLES -

A - .221 MIN. .224 MAX. DIA. FOR MOUNTING NT-129-832-4. 2 REQ.



MS-3262 0

REVISIONS					
SYM	DESCRIPTION	DATE	E.M.N. NO	DRAFT	CHKD
A	REVISED + REDRAWN				
0	ORIGINAL RELEASE FOR PRODUCTION	4-24-64		SR6	



METAL STAMP TMC PART NO. W/LATEST REV. LETTER 1/8 HIGH GOTHIC.

REF: LD-1241 & LD-1242

REQ'D.	ITEM	PART NUMBER	DESCRIPTION	SYMBOL
2	1	NT-129-832-4	NUT, ROUND, SWAGE TYPE	

LIST OF MATERIAL

MATERIAL 3064 THICK ALUMINUM, 5052 - H-32		THE TECHNICAL MATERIEL CORP. MAMARONECK, NEW YORK			
FINISH S404-IRIDITE		TITLE BRACKET, FUSE MOUNTING			
UNLESS OTHERWISE SPECIFIED DIMENSIONS ARE IN INCHES AND INCLUDE CHEMICALLY APPLIED OR PLATED FINISHES		DRAWN John C. Biele	DATE 8/2/62	FINAL APPROVAL RAX	
DECIMALS .X ± .05 .XX ± .01 .XXX ± .005		CHECKED QA	DATE	DATE 2/1/64	
FRACTIONS ± 1/64 ANGLES ± 0° 30'		ELECT. DES. JB JB	DATE 2/1/64	MS-3262	
TOLERANCES		MECH. DES. huc	DATE 2/1/64	SHEET	
				REV. LTR. 0	

-USE MATERIAL THICKNESS FOR MAX. RADIUS ON ALL BENDS.
-ALL ANGLES 90°.

NOTES

THE CONTENTS OF THIS DRAWING ARE THE EXCLUSIVE PROPERTY OF THE TECHNICAL MATERIEL CORP. ITS UNAUTHORIZED USE OR REPRODUCTION IN WHOLE OR IN PART IS STRICTLY FORBIDDEN.