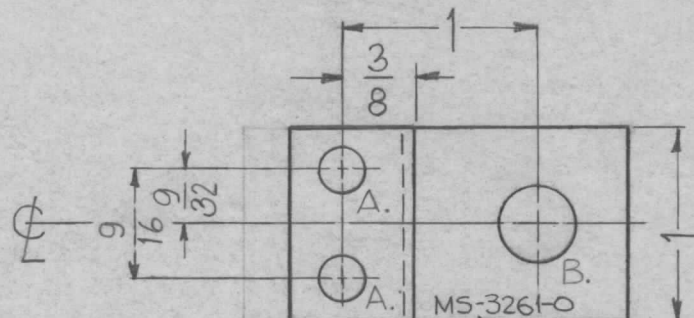


THE CONTENTS OF THIS DRAWING ARE THE EXCLUSIVE PROPERTY OF THE TECHNICAL MATERIEL CORP. ITS UNAUTHORIZED USE OR REPRODUCTION IN WHOLE OR IN PART IS STRICTLY FORBIDDEN.

REQ. PER UNIT	USED ON		
	MODEL	ASS'Y. NO.	DATE
4	GDT 200K	AD-137	8-2-62
4	GDT-200K	AD-138	8-2-62
1	GPT-200K	AX-398	8-2-62

MS-3261

⊙



METAL STAMP TMC PART NO. 1/8 HIGH GOTHIC.

UNLESS OTHERWISE SPECIFIED:

1. USE MATERIAL THICKNESS FOR MAXIMUM RADIUS ON ALL BENDS.
2. ALL ANGULAR BENDS 90°.
3. REMOVE ALL BURRS AND SHARP EDGES.

HOLES	REQ.
A. 13/64 DIA.	2
B. 3/8 DIA.	1

UNLESS OTHERWISE SPECIFIED DIMENSIONS ARE IN INCHES AND INCLUDE CHEMICALLY APPLIED OR PLATED FINISHES	
DECIMALS	FRACTIONS
.X ± .05	± 1/64
.XX ± .01	ANGLES
.XXX ± .005	± 0° 30'

CUT HERE GUARANTEED 2-66

REQ.	ITEM	PART NO.	F. BUDETTI DESCRIPTION		SYMBOL
		.064 THICK	THE TECHNICAL MATERIEL CORP.		
		STOCK SIZE	MAMARONECK, NEW YORK		
		ALUM.	BRACKET, INSULATOR MTG.		
		MATERIAL	DELAY PANEL		
SYM	DESCRIPTION	DATE	CH. NO.	DRAFTS	CHECKER
○	ORIGINAL RELEASE FOR PRODUCTION	3-264			AM.
UNLESS OTHERWISE SPECIFIED: DIMENSIONS ARE IN INCHES TOLERANCES ON		SCALE: 1:1		5052-H-32	
FRAC. ± 1/64 DEC. ± .005 ANGLES ± 1/2°		MAXIMUM ALLOWABLE TOLERANCES HAVE BEEN DETERMINED AND ANY DEVIATIONS WILL BE CAUSE FOR REJECTION. REMOVE ALL BURRS AND SHARP EDGES		TYPE & TEMPER HEAT TREAT. SPEC.	
				S404-IRIDITE 14-2 ALCOAT	
				FINISH & SPEC. NO.	
				JF. VITRO	
				DRAWN CHECKED	
				FINAL APPROVAL	
				MS-3261	
				ELEC. DES. APP. MECH. DES. APP.	