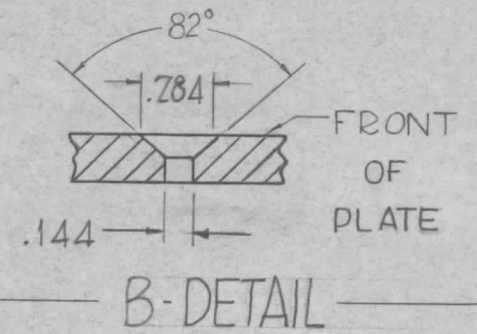
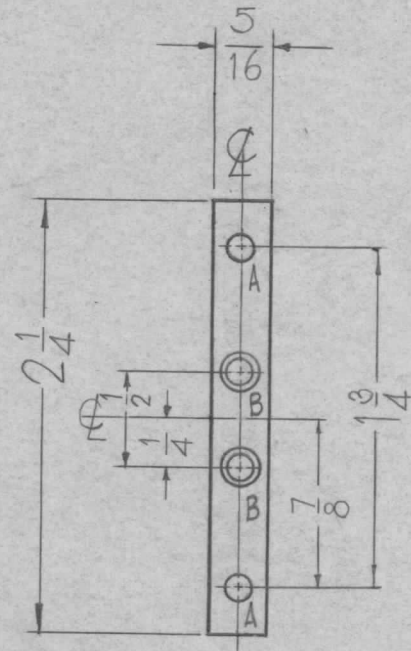


THE CONTENTS OF THIS DRAWING ARE THE EXCLUSIVE PROPERTY OF THE TECHNICAL MATERIEL CORP. ITS UNAUTHORIZED USE OR REPRODUCTION IN WHOLE OR IN PART IS STRICTLY FORBIDDEN.

REQ. PER UNIT	USED ON		
	MODEL	ASS'Y. NO.	DATE
2	GPT 200K	AR-137	8-2-62
2	GPT-200K	AR-138	8-2-62

MS-3258

0



<u>HOLES</u>	<u>REQ.</u>
A - 11/64 DIA.	2
B - SEE DETAIL	2

UNLESS OTHERWISE SPECIFIED  
DIMENSIONS ARE IN INCHES AND INCLUDE  
CHEMICALLY APPLIED OR PLATED FINISHES

DECIMALS	FRACTIONS
.X ± .05	± 1/64
.XX ± .01	ANGLES
.XXX ± .005	± 0° 30'

TOLERANCES

CUT HERE  
GUARANTEED  
2-66

SYM	DESCRIPTION	DATE	CH. NO.	DRAFTS	CHECKER	ENG. APP.	REQ. ITEM	PART NO.	F. BUDETTI	DESCRIPTION	SYMBOL
0	ORIGINAL RELEASE FOR PROD.	4-24-64			SRG			1/8 THICK		THE TECHNICAL MATERIEL CORP. MAMARONECK, NEW YORK PLATE, RELAY MTG.	
A	REDRAWN & REVISED							ALUMINUM			
	UNLESS OTHERWISE SPECIFIED: DIMENSIONS ARE IN INCHES TOLERANCES ON FRAC. ± 1/64 DEC. ± .005 ANGLES ± 1/2°	SCALE: 1"=1"			CODE A		5052-H-32		J.F. VITTO	aa	RJC
		MAXIMUM ALLOWABLE TOLERANCES HAVE BEEN DETERMINED AND ANY DEVIATIONS WILL BE CAUSE FOR REJECTION. REMOVE ALL BURRS AND SHARP EDGES					S-404-IRIDITE 14-2 AL-COAT		DRAWN	CHECKED	FINAL APPROVAL
											MS-3258
									ELEC. DES. APP.	MECH. DES. APP.	0