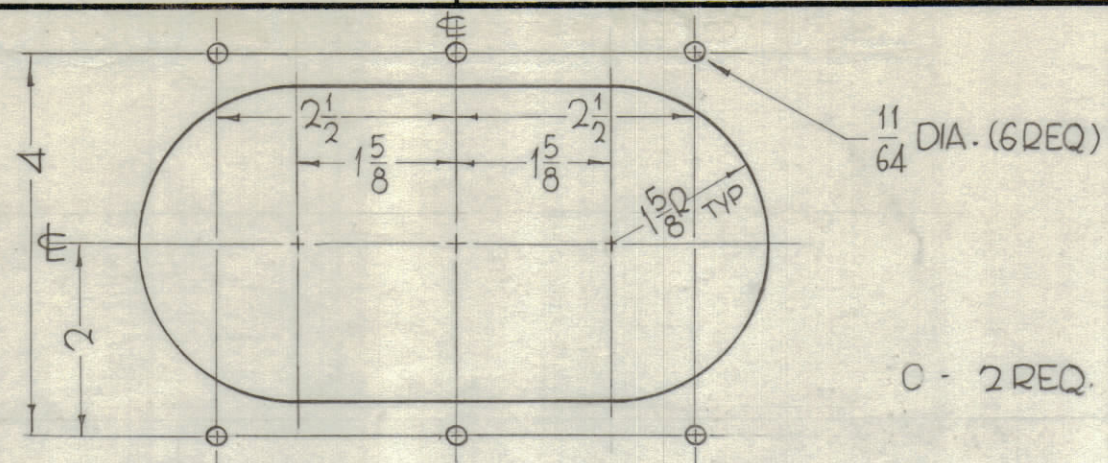
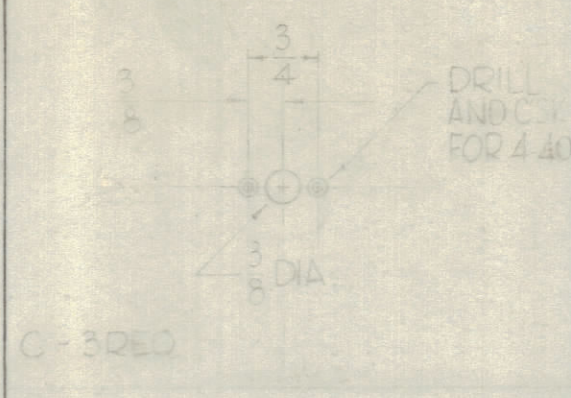
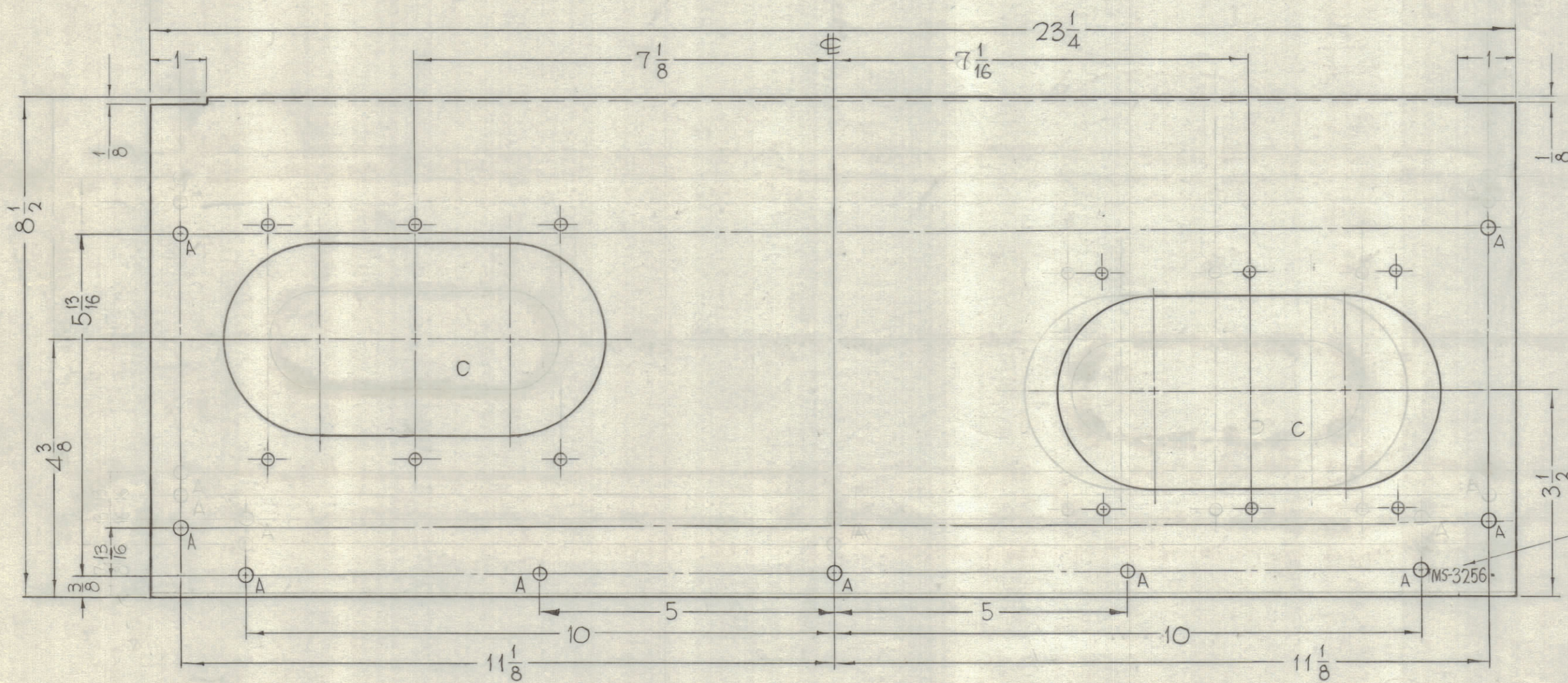
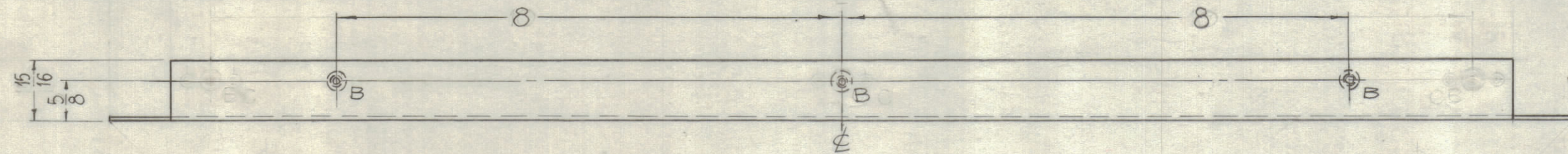


HOLES

- A - 13/64 DIA. — 9 REQ.
- B - 15/64 DIA. — 3 REQ.
- B - .221 MINIMUM, .224 MAXIMUM DIA'S FOR MTG. NT-129-832-4 — 3 REQ.
- C - 3 REQ.



REVISIONS							
ZONE	SYM	DESCRIPTION	DATE	E.M.N. NO.	DRAFT	CHKD	APPD
		ON 'C' DETAIL 7-1/16 DIM. WAS 6 1/2	10-24-63				
		DIM. FOR 'B' HOLES WAS 10"	2-4-64				
	0	ORIGINAL RELEASE FOR PRODUCTION	5-6-64		SRG		



METAL STAMP TMC PART NO. W/LATEST REV. LETTER 1/8 HIGH GOTHIC.

REF-TMC DWG-LD-1255-

3	1	NT-129-832-4	NUT, ROUND, SWAGE TYPE	
REQ'D.	ITEM	PART NUMBER	DESCRIPTION	SYMBOL
F. BUDETTI LIST OF MATERIAL				
MATERIAL .081 THICK, ALUMINUM, 5052 - H-32			THE TECHNICAL MATERIEL CORP. MAMARONECK, NEW YORK	
FINISH S404-IRIDITE 14-2 AL-COAT			TITLE PLATE, SIDE, RIGHT	
UNLESS OTHERWISE SPECIFIED DIMENSIONS ARE IN INCHES AND INCLUDE CHEMICALLY APPLIED OR PLATED FINISHES		DRAWN John C. Biele	DATE 4-20-63	FINAL APPROVAL [Signature]
DECIMALS .X ± .05 .XX ± .01 .XXX ± .005		CHECKED [Signature]	DATE	
FRACTIONS ± 1/64 ANGLES ± 0° 30'		ELECT. DES. [Signature]	DATE 2-6-64	
TOLERANCES		MECH. DES. [Signature]	DATE	
THE CONTENTS OF THIS DRAWING ARE THE EXCLUSIVE PROPERTY OF THE TECHNICAL MATERIEL CORP. ITS UNAUTHORIZED USE OR REPRODUCTION IN WHOLE OR IN PART IS STRICTLY FORBIDDEN.			SHEET MS-3256	REV. LTR. [Signature]

UNLESS OTHERWISE SPECIFIED

- 1- USE MATERIAL THICKNESS FOR MAXIMUM RADIUS ON ALL BENDS.
- 2- MOUNT ITEM 1, AFTER FINISHING.
- 3- ALL BENDS 90°.

NOTES

1	GPT-200K (AX-395)	A-3258
Q'TY./UNIT	MODEL USED ON	ASS'Y. NO.
SCALE 1/2"=1"	CODE A	

MS-3256