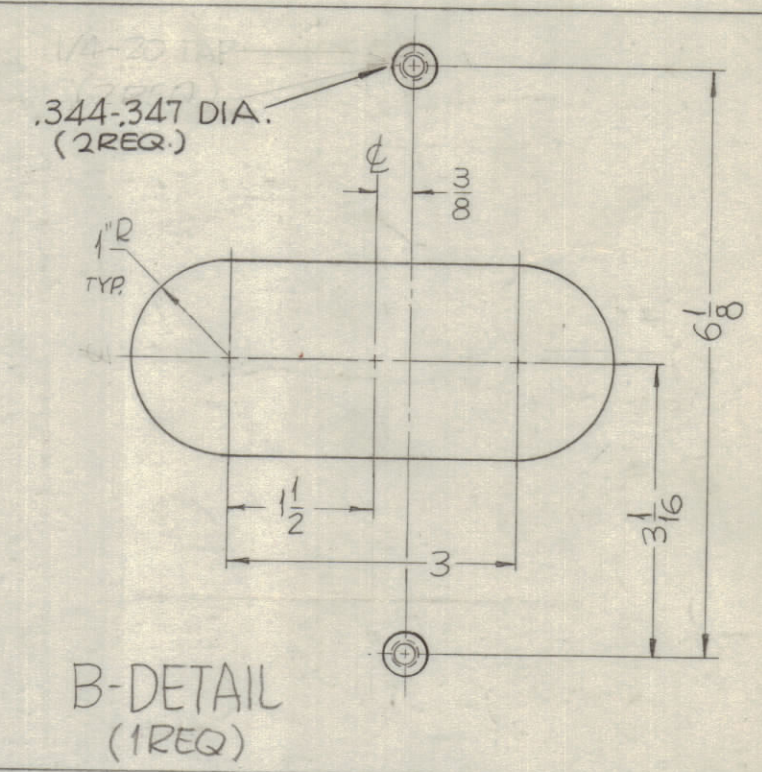
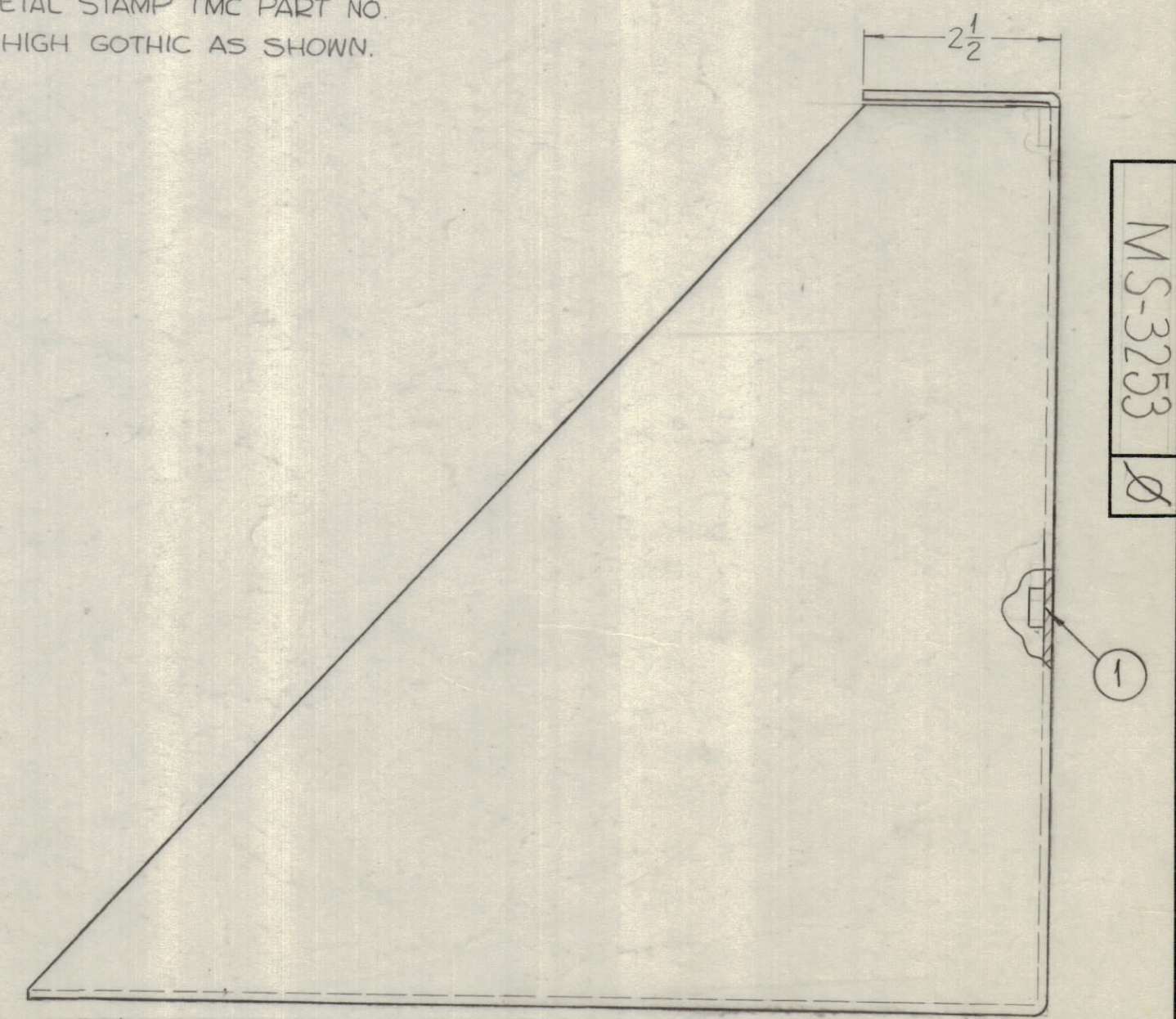


REVISIONS							
ZONE	SYM	DESCRIPTION	DATE	E.M.N. NO.	DRAFT	CHKD	APPD
	X1	22 5/8 DIM WAS 23', 10' DIM WAS 13'	1-4-64				
	X2	ITEM 1 ADDED	3-22-64				
	O	ORIGINAL RELEASE FOR PRODUCTION	6-18-64		WSB		

HOLES:  
 A ~ 1/2 DIA. (2REQ)  
 B ~ SEE DETAIL



METAL STAMP TMC PART NO.  
 1/8 HIGH GOTHIC AS SHOWN.



- UNLESS OTHERWISE SPECIFIED:
1. USE MATERIAL THICKNESS FOR MAXIMUM RADIUS ON ALL BENDS.
  2. ALL ANGULAR BENDS 90°.
  3. REMOVE ALL BURRS AND SHARP EDGES.
  4. MOUNT INSERTS AFTER FINISHING.
  5. WELD ALL CORNERS.

NOTES

1	GPT-200K	A-2706
Q'TY./UNIT	MODEL USED ON	ASS'Y. NO.
SCALE	CODE	

THE CONTENTS OF THIS DRAWING ARE THE EXCLUSIVE PROPERTY OF THE TECHNICAL MATERIEL CORP. ITS UNAUTHORIZED USE OR REPRODUCTION IN WHOLE OR IN PART IS STRICTLY FORBIDDEN.

2	1	NT-129-420-6	NUT ROUND, SWAGE TYPE
REQ'D.	ITEM	PART NUMBER	DESCRIPTION
F. BUDETTI LIST OF MATERIAL			
MATERIAL		THE TECHNICAL MATERIEL CORP.	
1/8 THICK ALUMINUM		MAMARONECK, NEW YORK	
FINISH		TITLE	
BLUE WRINKLE		CHASSIS, TUBE HOIST	
UNLESS OTHERWISE SPECIFIED DIMENSIONS ARE IN INCHES AND INCLUDE CHEMICALLY APPLIED OR PLATED FINISHES		DRAWN	DATE
		SRG	3-18-63
		CHECKED	DATE
		ASG	5/23/64
		ELECT. DES.	DATE
		MECH. DES.	DATE
		MS-3253	
		SHEET	REV. LTR.