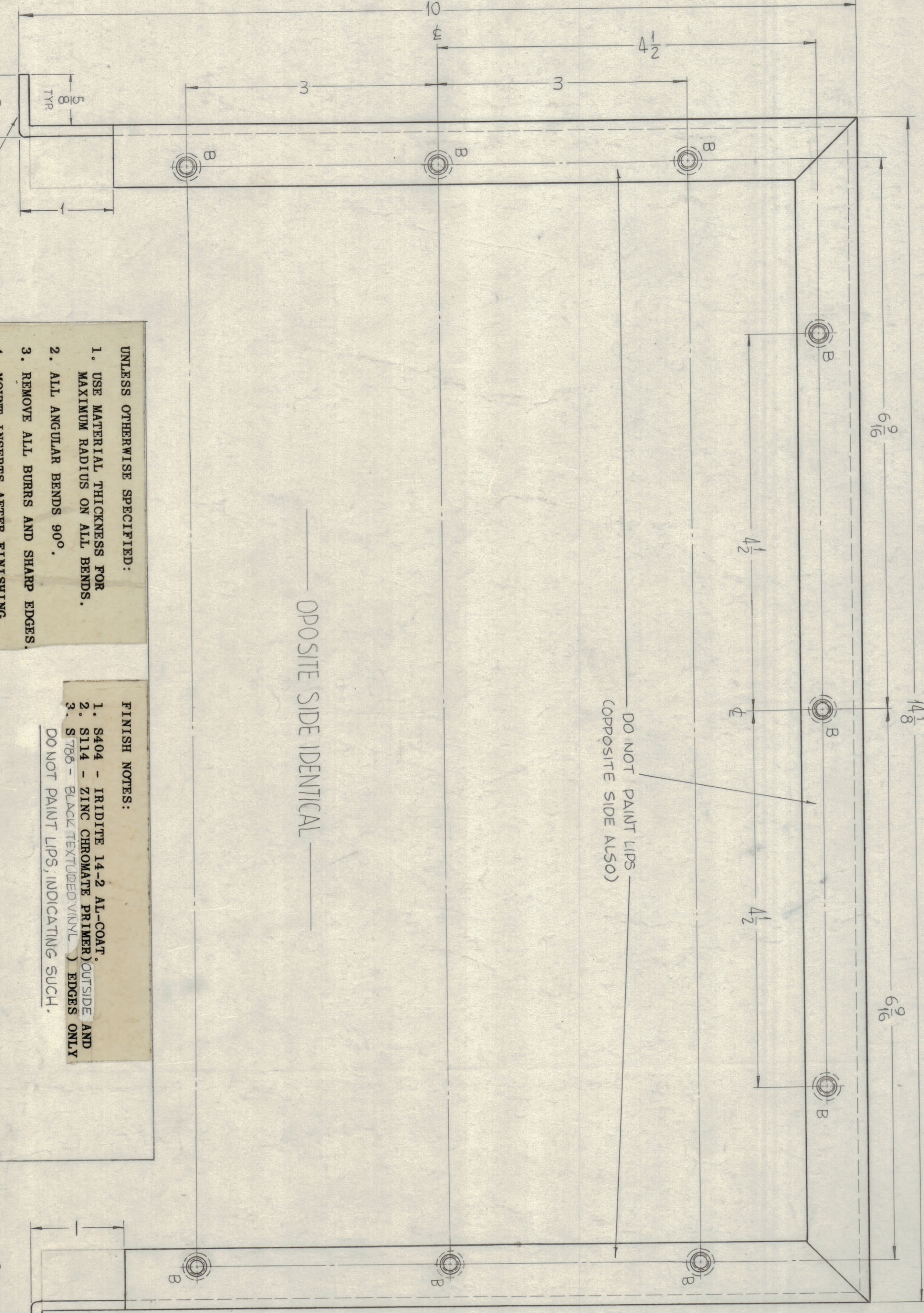
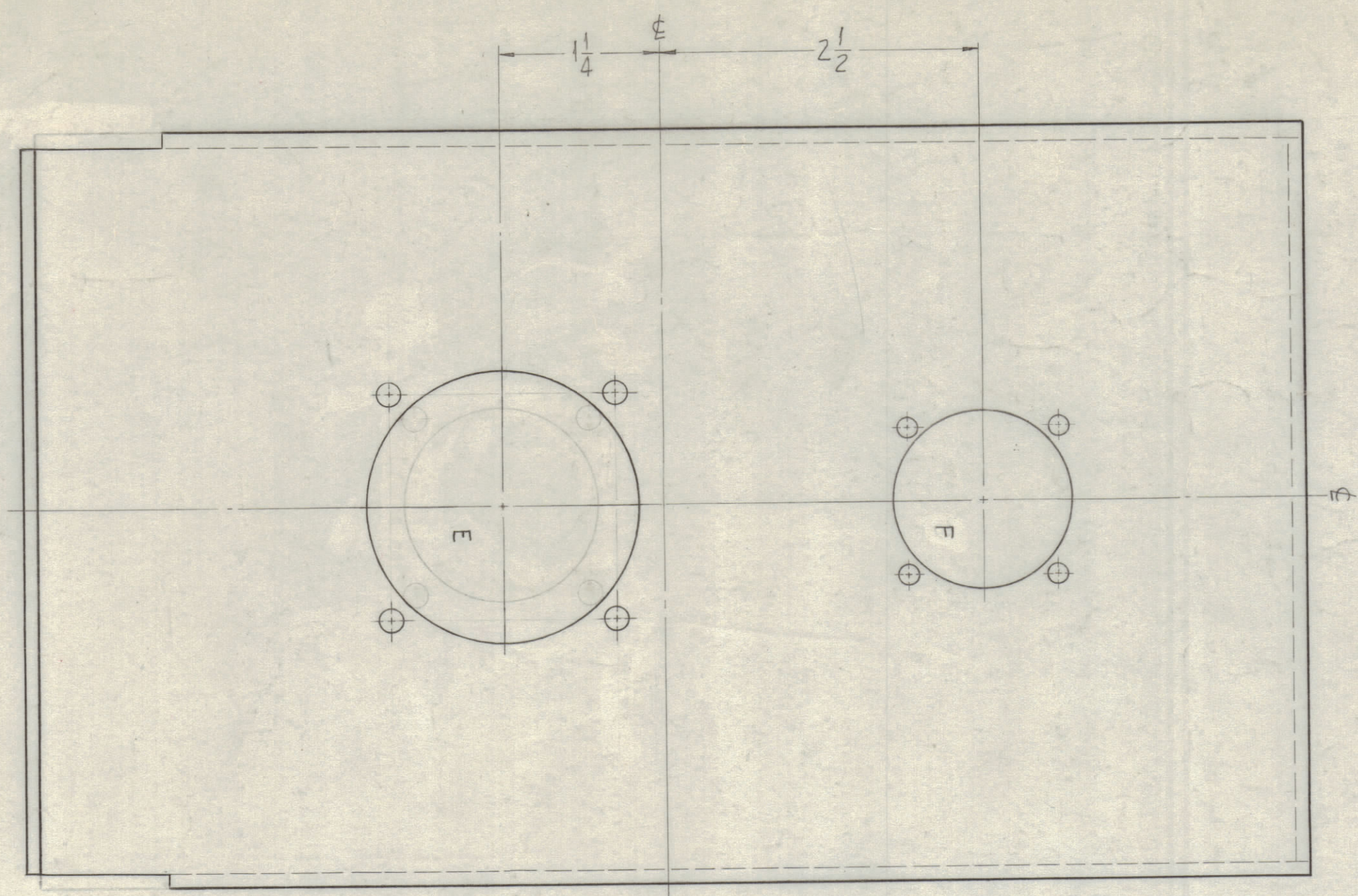
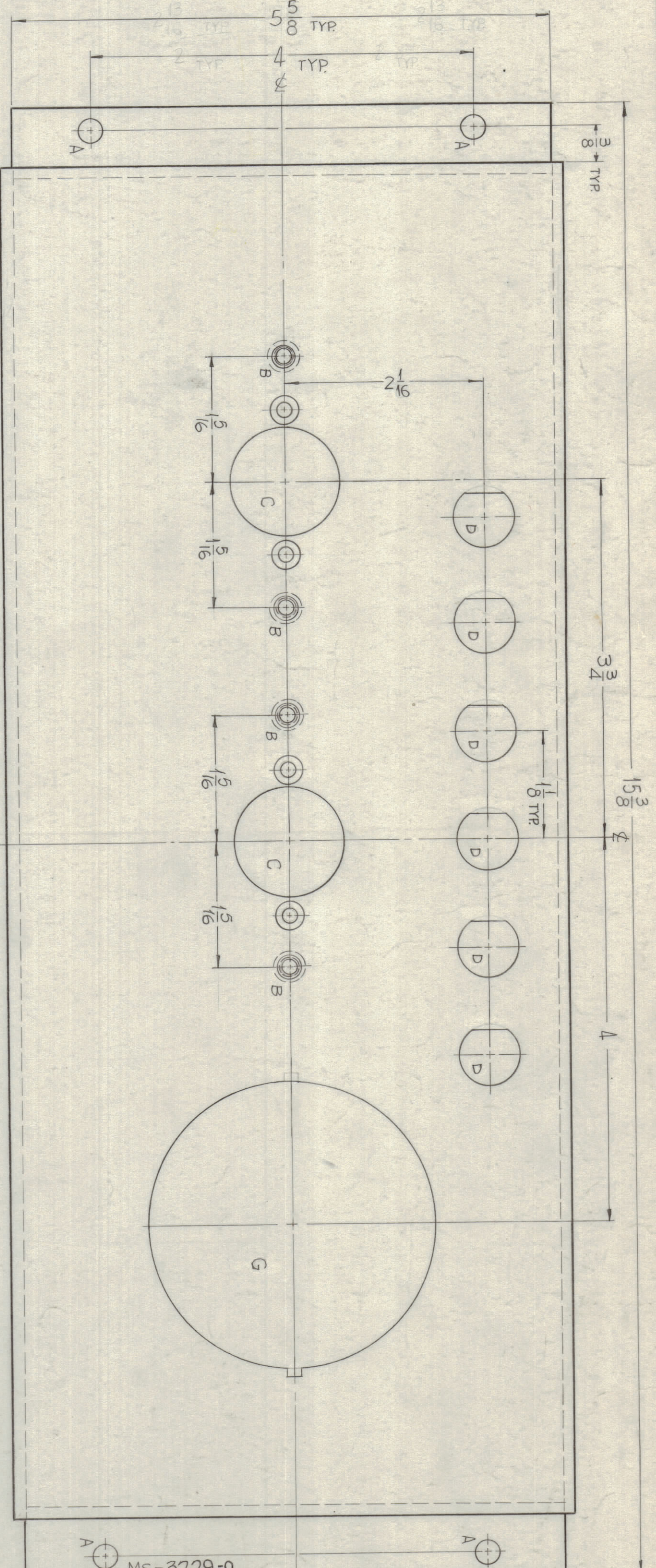


ZONE	SYM	DESCRIPTION	DATE	ENR. NO.	DRAWN	CHKD	APP
0		ORIGINAL RELEASE FOR PRODUCTION	3/2/64		AMM		

REVISIONS	
NO.	DESCRIPTION
1	
2	
3	
4	
5	
6	
7	
8	
9	
10	
11	



UNLESS OTHERWISE SPECIFIED:

1. USE MATERIAL THICKNESS FOR MAXIMUM RADII ON ALL BENDS.
2. ALL ANGULAR BENDS 90°.
3. REMOVE ALL BURRS AND SHARP EDGES.
4. MOUNT INSERTS AFTER FINISHING.

FINISH NOTES:

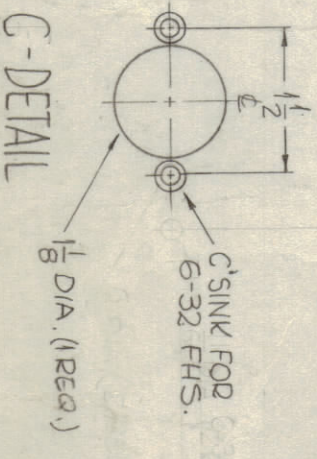
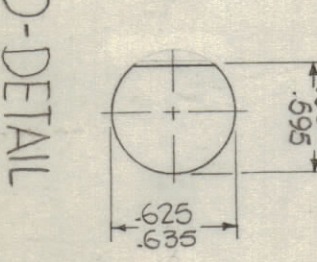
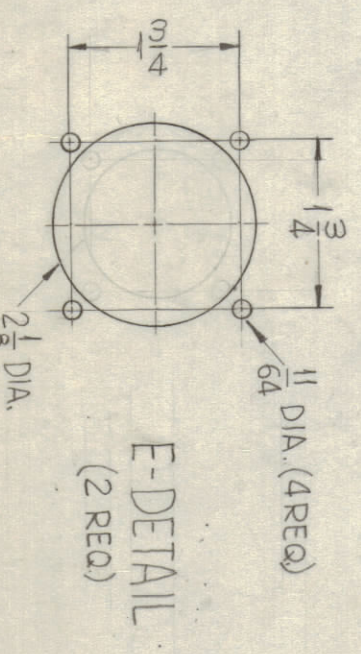
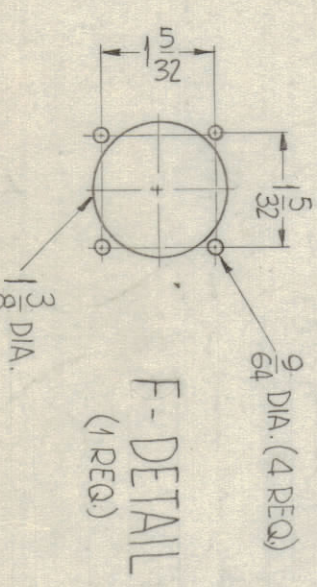
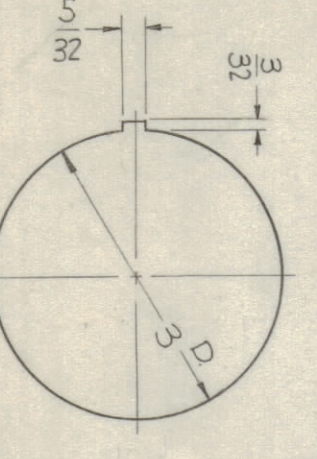
1. S404 - IRIDIUM 14-2 AL-COAT.
2. S114 - ZINC CHROMATE PRIMER (OUTSIDE AND EDGES ONLY).
3. S706 - Black (TEXTURED VINYL).
- DO NOT PAINT LIPS, INDICATING SUCH.

OPPOSITE SIDE IDENTICAL

METAL STAMP TMC PART NO. 1/8 HIGH GOTHIC. MIN.

1. PRESS FIT INTO ALL 'B' HOLES AFTER FINISHING.

DO NOT PAINT LIP (THIS SIDE ONLY)



HOLE	DESCRIPTION	REQ
A	15/64 (234) DIA.	4
B	.221 MAX. DIA. 22	22
C	SEE DETAIL	2
D	"	6
E	"	2
F	"	1
G	"	1

NOTE: 1. USE OTHERWISE SPECIFIED MATERIAL THICKNESS FOR MAX. RADII ON BENDS AND ANGULAR BENDS. 2. ALL ANGULAR BENDS 90°. 3. REMOVE ALL BURRS AND SHARP EDGES. 4. MOUNT INSERTS AFTER FINISHING.

REF.	TMC DWG. ID	REV.	ITEM	PART NUMBER	DESCRIPTION	ENR. NO.
	DT-1215			NT-129-B37-6	MOUNT ROUND-SHAPE TYPE	

F. BUDET	LIST OF MATERIAL	TITLE
	MATERIAL 1/8" THICK, ALUMINUM, 5052-H32	CHASSIS, BLOWER DELAY
	FINISH SEE NOTE	MAMARONECK, NEW YORK

UNLESS OTHERWISE SPECIFIED	UNLESS OTHERWISE SPECIFIED	UNLESS OTHERWISE SPECIFIED
DIMENSIONS ARE IN INCHES AND INCLUDE DIMENSIONAL TOLERANCES ON FINISH SURFACES	TOLERANCES	FRACTIONS
±.015	±.005	±.005
±.005	±.002	±.002

MS-3229 0