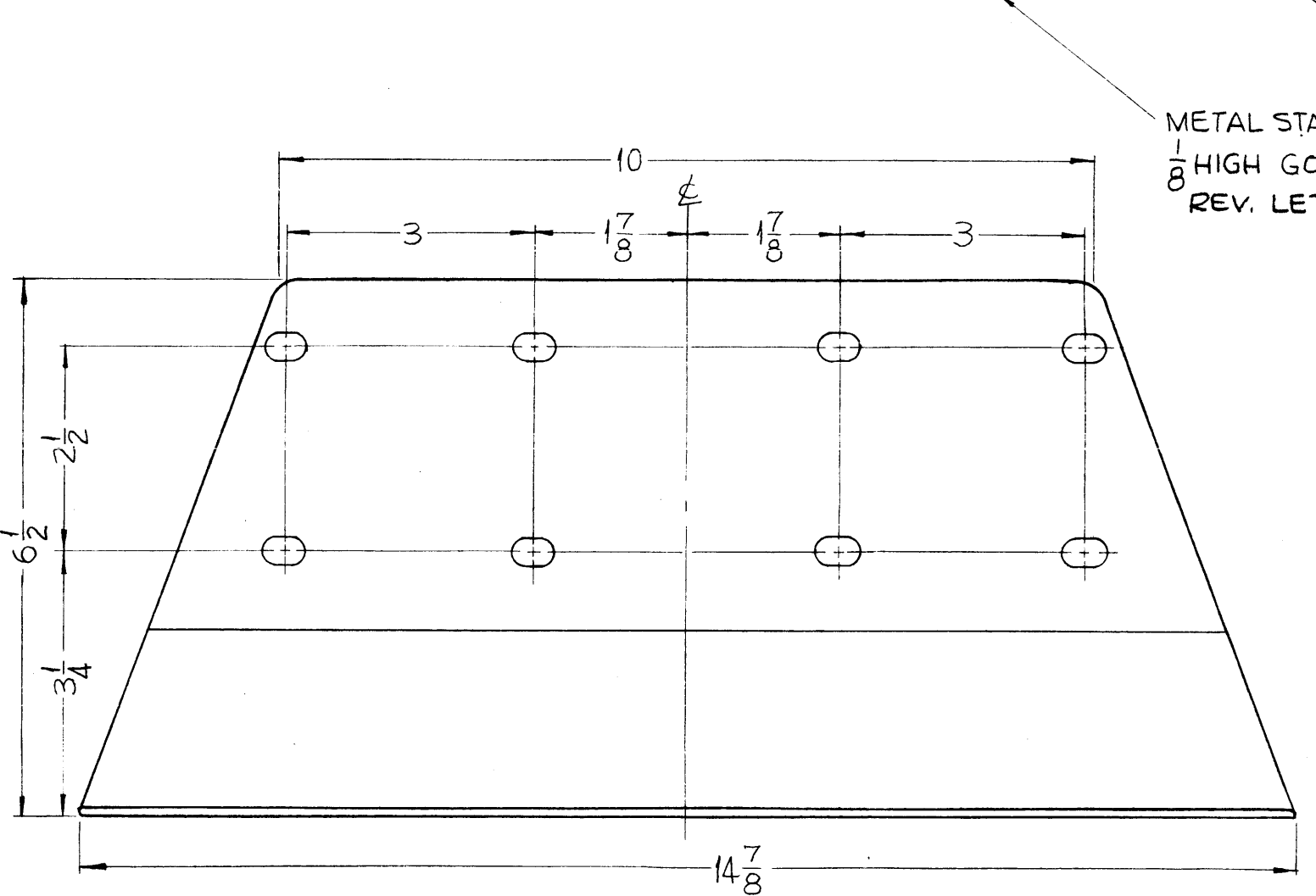


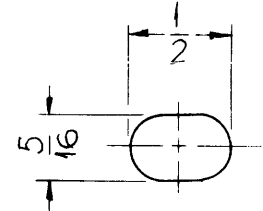
| REVISIONS | | | | | |
|-----------|---------------------------------|---------|------------|-------|-----------|
| SYM | DESCRIPTION | DATE | E.M.N. NO. | DRAFT | CHKD APPD |
| Ø | ORIGINAL RELEASE FOR PRODUCTION | 5-18-64 | | SRG | |

MS-3215

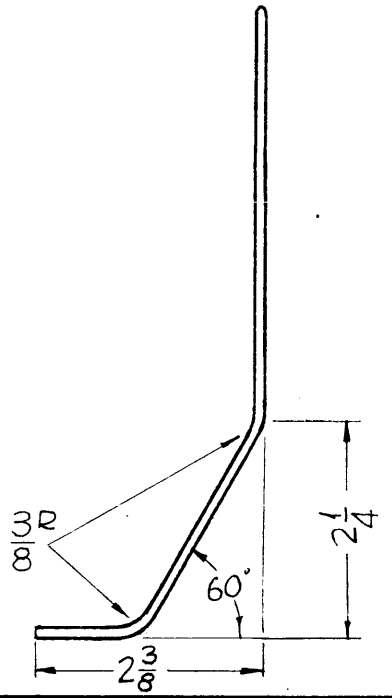


METAL STAMP TMC PART NO. 1/8 HIGH GOTHIC W/LATEST REV. LETTER.

3/8 R. (ALL CORNERS)



SLOT DETAIL
(15 REQ)



NOTE:
ROUND ALL EDGES 1/32 RADIUS.
POLISH BEFORE PLATING.

| | | |
|-------------|---------------|------------|
| 1 | GPT-200K | AX-395 |
| T.Y./UNIT | MODEL USED ON | ASS'Y. NO. |
| SCALE 1/2:1 | CODE | |

THE CONTENTS OF THIS DRAWING ARE THE EXCLUSIVE PROPERTY OF THE TECHNICAL MATERIEL CORP. ITS UNAUTHORIZED USE OR REPRODUCTION IN WHOLE OR IN PART IS STRICTLY FORBIDDEN.

| REQ'D. | ITEM | PART NUMBER | DESCRIPTION | SYMBOL |
|---|------|--------------|---|--------|
| F. BUDETTI LIST OF MATERIAL | | | | |
| MATERIAL .097 THICK HOT ROLLED COPPER | | | THE TECHNICAL MATERIEL CORP. MAMARONECK, NEW YORK | |
| FINISH S-245 SILVER PLATE, BRIGHT | | | TITLE BRACKET, CAPACITOR CONNECTOR | |
| UNLESS OTHERWISE SPECIFIED DIMENSIONS ARE IN INCHES AND INCLUDE CHEMICALLY APPLIED OR PLATED FINISHES | | | | |
| DRAWN SRG | | DATE 4-11-63 | FINAL APPROVAL RAC | |
| CHECKED aa | | DATE | | |
| ELECT. DES. SRG | | DATE 4/15/64 | MS-3215 | |
| MECH. DES. SRG | | DATE 2/9/64 | Ø | |
| DECIMALS .X ± .05 .XX ± .01 .XXX ± .005 | | | TOLERANCES | |
| FRACTIONS ± 1/64 | | | ANGLES ± 0° 30' | |
| SHEET | | | REV. LTR. | |

NOTES