

MS-3214 Ø

HOLES

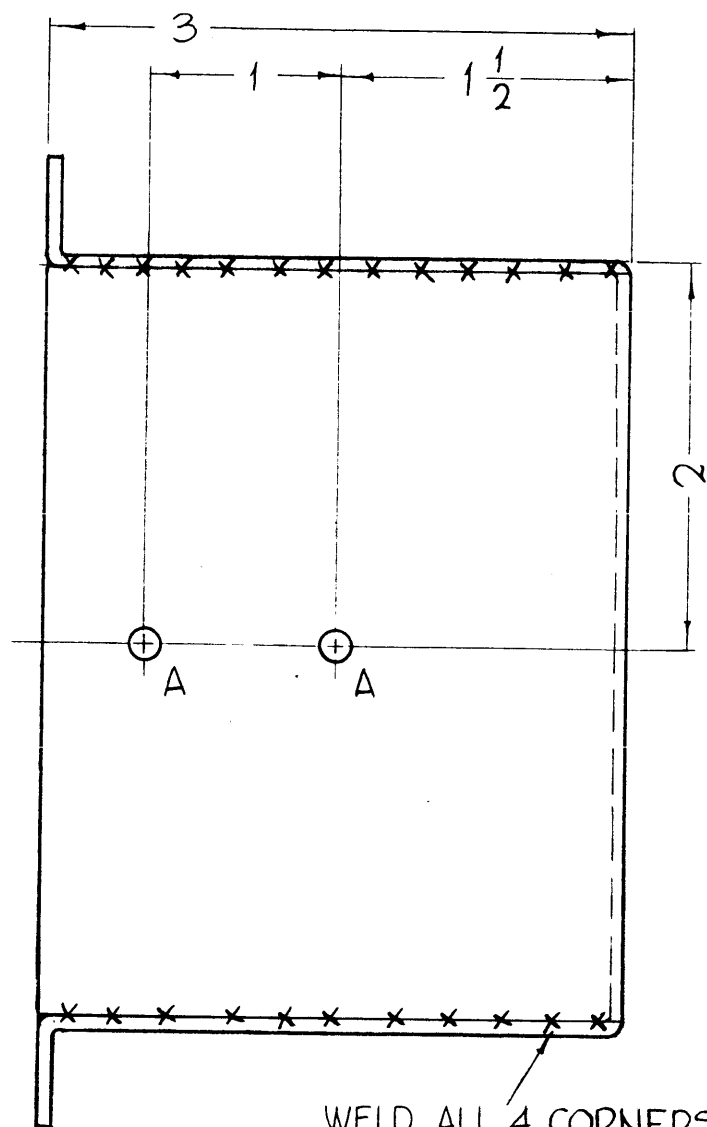
A - 11/64 DIA.
B - 15/64 DIA.

REQ.

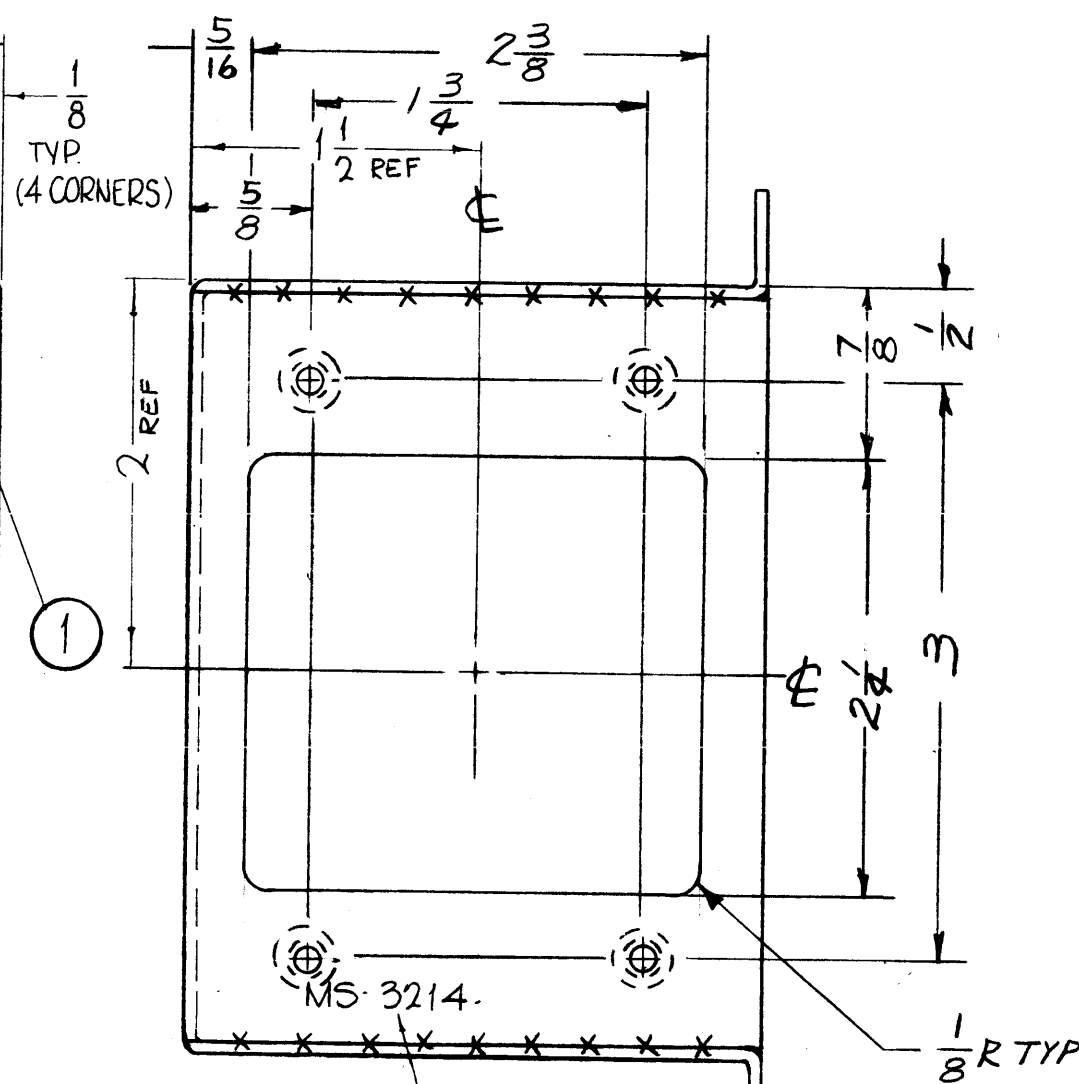
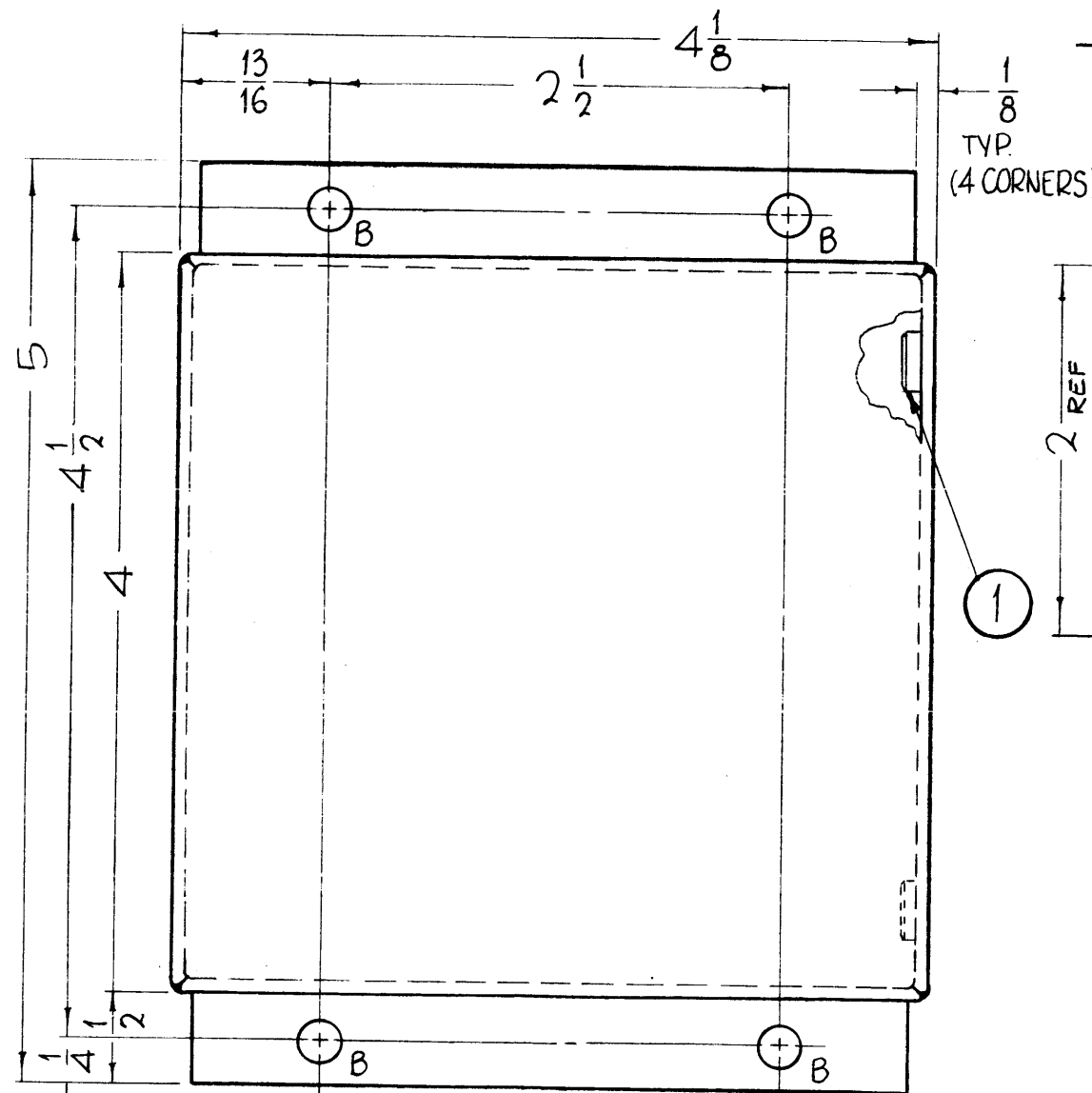
2
4

C-.221 MIN., .224 MAX. DIA'S FOR MTG. ITEM NO.1 NT-129-832-4.

4 REQ.



WELD, ALL 4 CORNERS AND GRIND SMOOTH.



METAL STAMP TMC PART NO. 1/8 HIGH GOTHIC W/LATEST REV. LETTER

REF. TMC DWG. NO. LD-1270

UNLESS OTHERWISE SPECIFIED:

1. USE MATERIAL THICKNESS FOR MAXIMUM RADIUS ON ALL BENDS.
2. ALL ANGULAR BENDS 90°.
3. REMOVE ALL BURRS AND SHARP EDGES.
4. MOUNT INSERTS AFTER FINISHING.

Ø	ORIG. RELEASE FOR PROD	5-18-64		SRG		
SYM	DESCRIPTION	DATE	CH. NO.	DRAFTS	CHECKER	ENG. APP.
UNLESS OTHERWISE SPECIFIED:		SCALE: 1" = 1"				
DIMENSIONS ARE IN INCHES		MAXIMUM ALLOWABLE TOLERANCES HAVE BEEN DETERMINED AND ANY DEVIATIONS WILL BE CAUSE FOR REJECTION. REMOVE ALL BURRS AND SHARP EDGES				
TOLERANCES ON						
FRACTIONS ± 1/64		DECIMALS ± .005		ANGLES ± 1/2°		

1	GPT-200K	AX-395	A-2817	7-8-63
REQ. PER UNIT	MODEL	SECTION	ASSY. NO.	DATE
USED ON				

3	1	NT-129-832-4	NUT, ROUND, SWAGE TYPE	
REQ. ITEM	PART NO.	F. BUDETTI	DESCRIPTION	SYMBOL
.001 THICK STOCK SIZE		THE TECHNICAL MATERIEL CORP. MAMARONECK, NEW YORK		
ALUMINUM		CHASSIS, METERING CIRCUIT MTG.		
MATERIAL				
5052, H-32		John C. Biele	aa	
TYPE & TEMPER	HEAT TREAT. SPEC.	DRAWN	CHECKER	FINAL APPROVAL
S-245 SILVER PLATE BRIGHT			2/4/64	
FINISH & SPEC. NO.	ELEC. DES. APP.	MECH. DES. APP.	MS-3214 Ø	