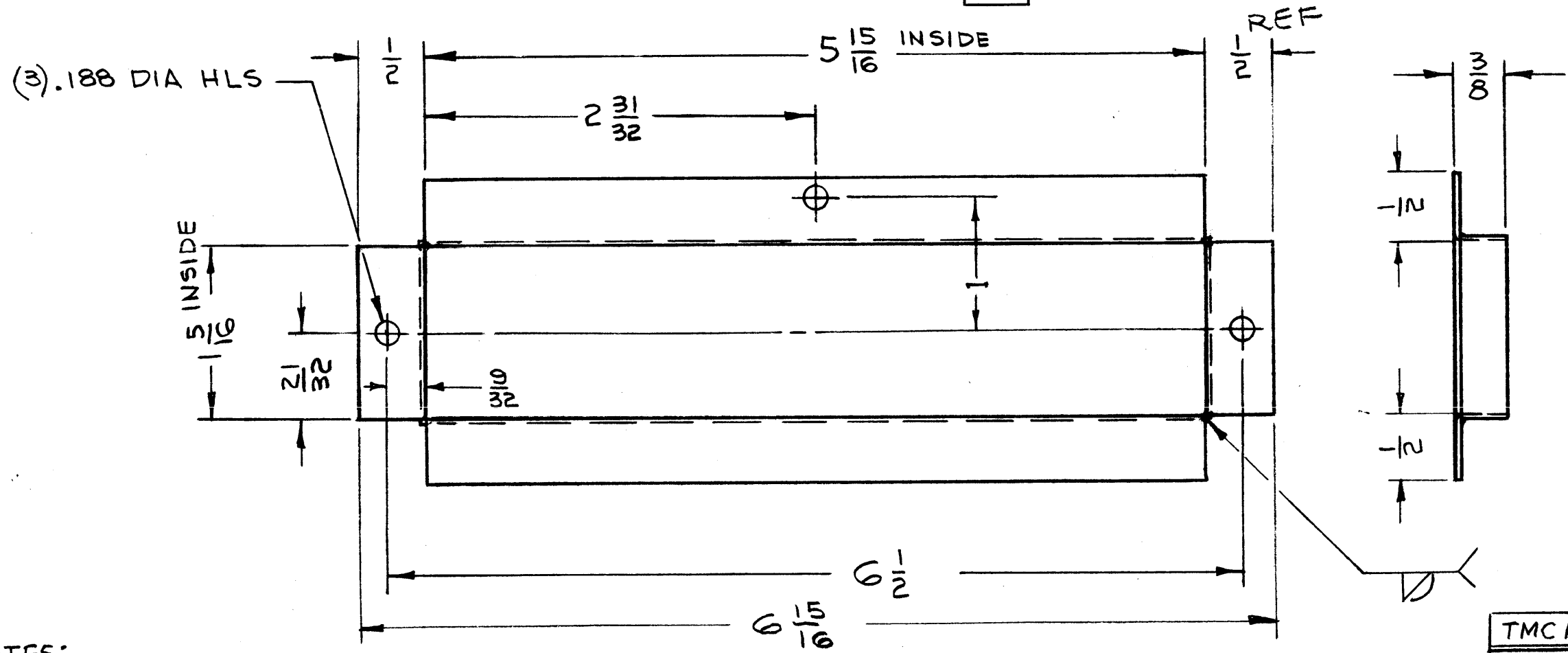


MS-3101 A

REVISIONS					
SYM	DESCRIPTION	DATE	E.M.N. NO.	DRAFT	CHKD APPD
A	TMC P/N CHG., SEE CHART, RAK-96-2 ADDED NOTES 2&3 DELETED.	12/26/62	5045	7/11	JCL



NOTES:  
 1. PART MUST BE FREE OF BURRS & SHARP EDGES.  
 2. FINISH: 1) DEGREASE & CLEAN. (FOR STEEL ONLY)

TMC P/N	MATL	FINISH
MS3101	20 GA. STL. SHEET	S114 5520
MS3101-2	040 ALUM 5052-H32	S404 S114, 5520

REF: TANK, PRESSURE

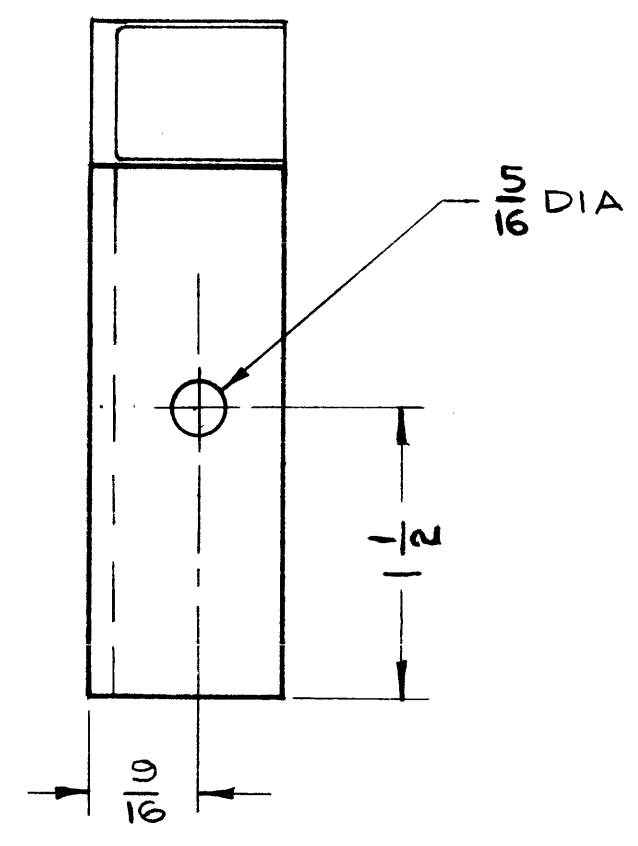
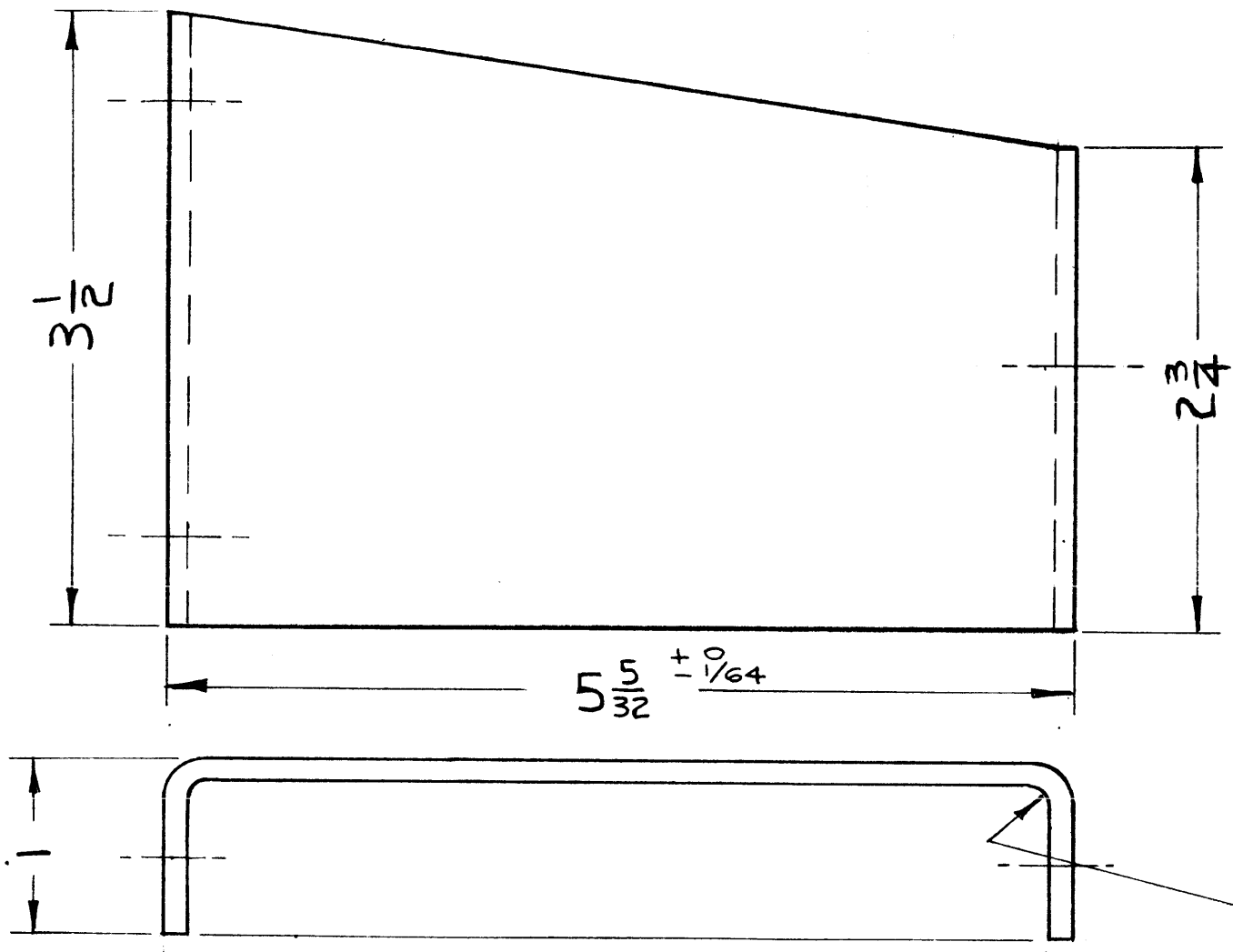
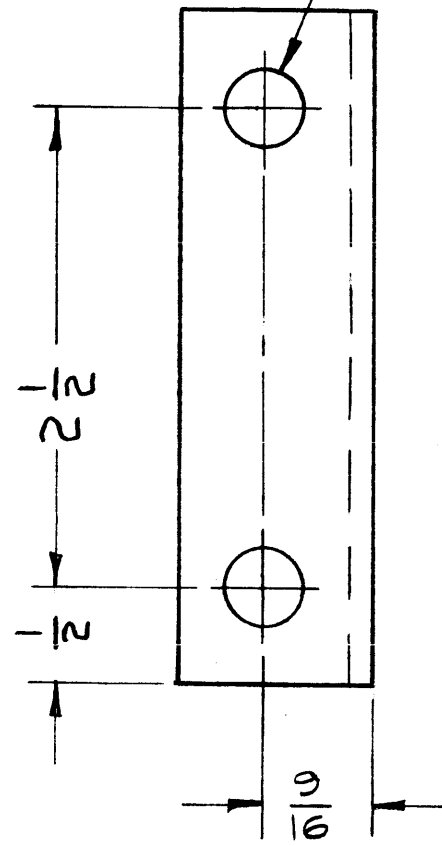
Q'TY./UNIT	MODEL USED ON	ASS'Y. NO.
2	RAK-96-2	
2	RAK-21	A-3125
SCALE NO SCALE		CODE
THE CONTENTS OF THIS DRAWING ARE THE EXCLUSIVE PROPERTY OF THE TECHNICAL MATERIEL CORP. ITS UNAUTHORIZED USE OR REPRODUCTION IN WHOLE OR IN PART IS STRICTLY FORBIDDEN.		

REQ'D.	ITEM	PART NUMBER	DESCRIPTION	SYMBOL
KRUY LIST OF MATERIAL				
MATERIAL SEE CHART			THE TECHNICAL MATERIEL CORP. MAMARONECK, NEW YORK	
FINISH SEE CHART			TITLE SLEEVE, PRESSURE TANK	
UNLESS OTHERWISE SPECIFIED DIMENSIONS ARE IN INCHES AND INCLUDE CHEMICALLY APPLIED OR PLATED FINISHES			DRAWN JOK	DATE 9/26/62
DECIMALS .X ± .05 .XX ± .01 .XXX ± .005			CHECKED File	DATE 2-23-63
FRACTIONS ± 1/64 ANGLES ± 0° 30'			ELECT. DES. TAK	DATE 1/3/63
TOLERANCES			MECH. DES. TAK	DATE 1/3/63
NO SCALE			FINAL APPROVAL BP	DATE
NO SCALE			MS-3101	A
NO SCALE			SHEET	REV. LTR.

NOTES

REVISIONS						
SYM	DESCRIPTION	DATE	E.M.N. NO.	DRAFT	CHKD	APPD

$\frac{13}{32}$  DIA 2 HOLES



**NOTES:**

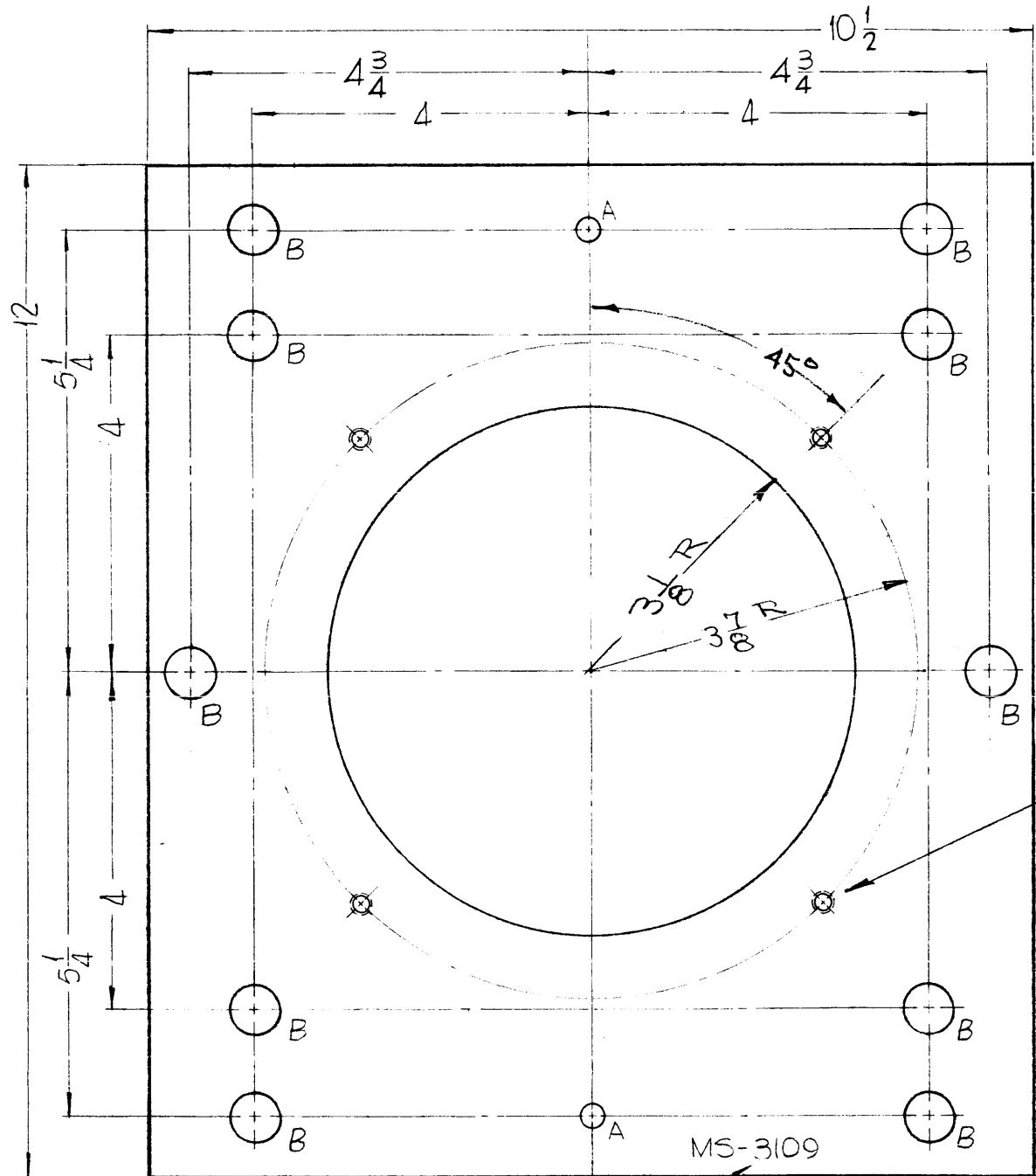
1. REMOVE ALL BURRS & SHARP EDGES.
2. FINISH: 1) DEGREASE & CLEAN.  
2) APPLY PRIMER PER TMC SPEC S-520.  
3) ONE COAT BLU-GREY VINYL NON-TEXTURED, PER TMC SPEC S-520.

TMC PART NO.	DESCRIPTION	REQ'D PER UNIT	
		RAK-21B	RAK-22A
MS-3105 -1	AS SHOWN (L. SIDE)	2	
MS-3105 -2	OPP HAND (R. SIDE)	2	

REQ'D.	ITEM	PART NUMBER	DESCRIPTION	SYMBOL
<b>KRUY LIST OF MATERIAL</b>				
MATERIAL		THE TECHNICAL MATERIEL CORP. MAMARONECK, NEW YORK		
STEEL SHEET 1/8 THK		TITLE BRACKET, MOUNTING		
FINISH		SEE NOTE		
UNLESS OTHERWISE SPECIFIED DIMENSIONS ARE IN INCHES AND INCLUDE CHEMICALLY APPLIED OR PLATED FINISHES		DRAWN <i>MB</i>	DATE 12-6-62	FINAL APPROVAL <i>BP</i>
		CHECKED <i>AO</i>	DATE 3/29/63	DATE
		ELECT. DES.	DATE	MS-3105
		MECH. DES. <i>T. Hany</i>	DATE 1-3-63	SHEET
				REV. LTR.

SEE TABLE	DDR-5	ASS'Y. NO.
Q'TY./UNIT	MODEL USED ON	
SCALE 1:1	CODE	
THE CONTENTS OF THIS DRAWING ARE THE EXCLUSIVE PROPERTY OF THE TECHNICAL MATERIEL CORP. ITS UNAUTHORIZED USE OR REPRODUCTION IN WHOLE OR IN PART IS STRICTLY FORBIDDEN.		

NOTES



DRILL & TAP  
FOR 10-32 M.S.,  
EQUALLY SPACED  
90° APART.  
4 REQ.

METAL STAMP TMC PART NO.  
1/8 HIGH GOTHIC AS SHOWN.

MS-3109

REVISIONS

SYM	DESCRIPTION	DATE	E.M.N. NO.	DRAFT	CHKD	APPD
-----	-------------	------	------------	-------	------	------

HOLES:  
A ~ 15/64 DIA. — 2 REQ.  
B ~ 9/16 DIA. — 10 REQ.

REQ'D.	ITEM	PART NUMBER	DESCRIPTION	SYMBOL
--------	------	-------------	-------------	--------

F. BUDETTI LIST OF MATERIAL

MATERIAL 1/4 THICK,  
ALUMINUM, 2024-T-3 THE TECHNICAL MATERIEL CORP.  
MAMARONECK, NEW YORK

FINISH S404-IDIDITE TITLE PLATE, SUPPORT RESISTOR

UNLESS OTHERWISE SPECIFIED DIMENSIONS ARE IN INCHES AND INCLUDE CHEMICALLY APPLIED OR PLATED FINISHES		DRAWN SRG	DATE 3-5-63	FINAL APPROVAL BP	DATE
DECIMALS .X ± .05 .XX ± .01 .XXX ± .005		CHECKED aa	DATE	MS-3109	SHEET
TOLERANCES ± 1/64 ANGLES ± 0° 30'		ELECT. DES. [Signature]	DATE		
		MECH. DES. [Signature]	DATE		

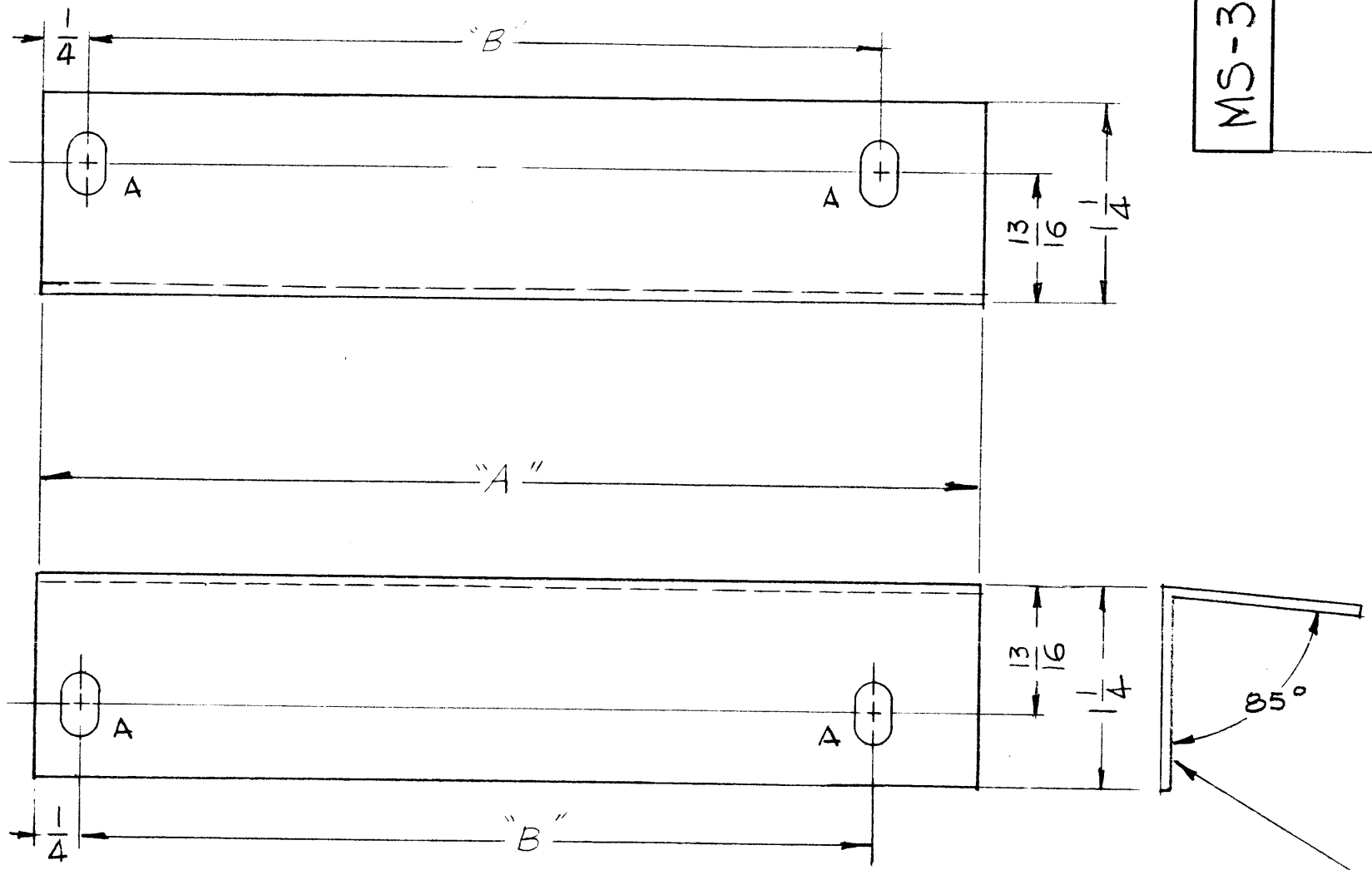
NOTES

THE CONTENTS OF THIS DRAWING ARE THE EXCLUSIVE PROPERTY  
OF THE TECHNICAL MATERIEL CORP. ITS UNAUTHORIZED USE OR  
REPRODUCTION IN WHOLE OR IN PART IS STRICTLY FORBIDDEN.

TMC P/N	A	B	USED ON	REQ'D
MS-3111	5 7/8	4 13/16	TER-5000-300 U	2
MS-3111-2	7 7/8	6 13/16	TER-13X-600EF	2

REVISIONS					
SYM	DESCRIPTION	DATE	EM. NO.	DRAFT	CHKD
A	HOLE "A" WAS 13/64 X 13/32 SLOT.	8-5-63	97	AK.	JAY
B	DIM "A" WAS 5-7/8, DIM "B" WAS 4-13/16 (2 PLACES) T.M.C. PART NUMBER CHART ADDED	9/11/65	14540	AV	JAY

MS-3111



HOLE	DESCRIPTION	REQ'D
A	7/32 x 3/8 SLOT	4

METAL STAMP TMC PART NO.  
V8 HIGH GOTHIC, W/LATEST  
REVISION LETTER.

2	SEE CHART	A-3130
QTY./UNIT	MODEL USED ON	ASS'Y. NO.
SCALE	CODE	

REQ'D.	ITEM	PART NUMBER	DESCRIPTION	SYMBOL
F. BUDETTI LIST OF MATERIAL				
MATERIAL			THE TECHNICAL MATERIEL CORP. MAMARONECK, NEW YORK	
.064 THK 5052-H32 ALUMINUM			TITLE	
FINISH			MOLDING, CORNER, TOP	
S404-YELLOW IRIDITE S114-ZINC CHROMATE PRIMER S115-SMOOTH GRAY ENAMEL			DRAWN G.O.L. DATE 3-16-64	
UNLESS OTHERWISE SPECIFIED DIMENSIONS ARE IN INCHES AND INCLUDE CHEMICALLY APPLIED OR PLATED FINISHES			CHECKED [Signature] DATE	
DECIMALS .X ± .05 .XX ± .01 .XXX ± .005			ELECT. DES. DATE	
TOLERANCES			MECH. DES. DATE	
FRACTIONS ± 1/64 ANGLES ± 0° 30'			FINAL APPROVAL [Signature] DATE	
THE CONTENTS OF THIS DRAWING ARE THE EXCLUSIVE PROPERTY OF THE TECHNICAL MATERIEL CORP. ITS UNAUTHORIZED USE OR REPRODUCTION IN WHOLE OR IN PART IS STRICTLY FORBIDDEN.			SHEET MS-3111	
			REV. LTR. B	

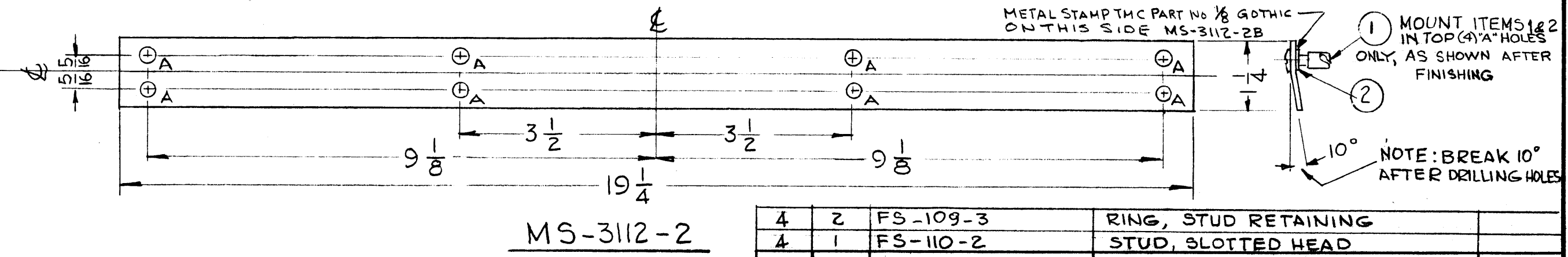
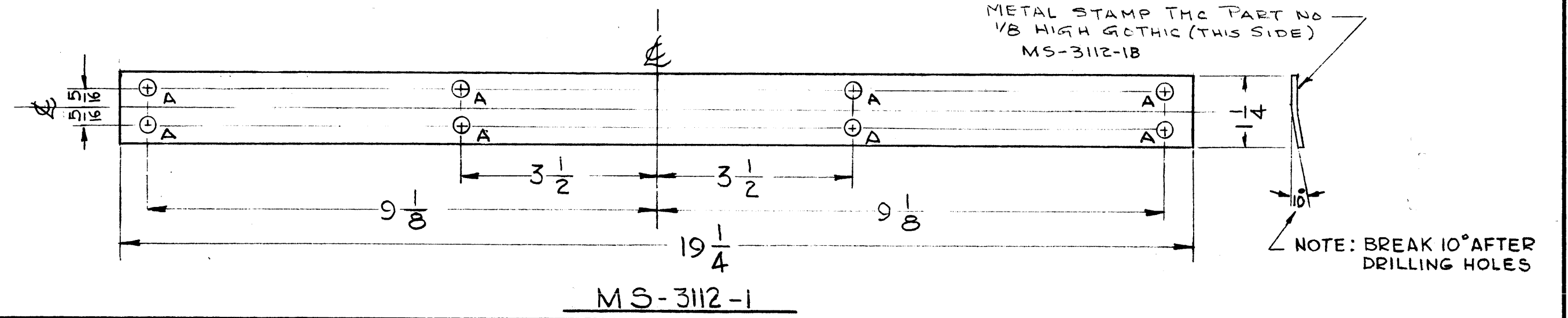
NOTES

HOLE	DESCRIPTION	REQ'D
A	1/4 DIA.	8

PART NO	REQ PER UNIT	MODEL USED ON
MS-3112-1	3	TER 5000/3000
	4	TER 18K / 600BF
MS-3112-2	2	TER 18K / 600BF
	1	TER 5000/3000

REVISIONS						
SYM	DESCRIPTION	DATE	E.M.N. NO.	DRAFT	CHKD	APPD
A	MS-3112-2 (4) LOWER "A" HOLES WERE "B" HOLES 13/64 DIA. MS-3112-1 "A" HOLES WERE 15/64 DIA.	8-2-63	9697	AK	YNY	LS
B	FINISH: S-114 & S-404 ADDED	8-27-63	9043	PR	JPB	WJE
C	TER 18K/600BF ADDED TO USED ON COLUMN	5-21-65	CC	CJL	JCB	

MS-3112



HOLE	DESCRIPTION	REQ'D
A	1/4 DIA.	8

See CHART	TER-5000-300A	A-3130
Q'TY./UNIT	MODEL USED ON	ASS'Y. NO.
SCALE	CODE	

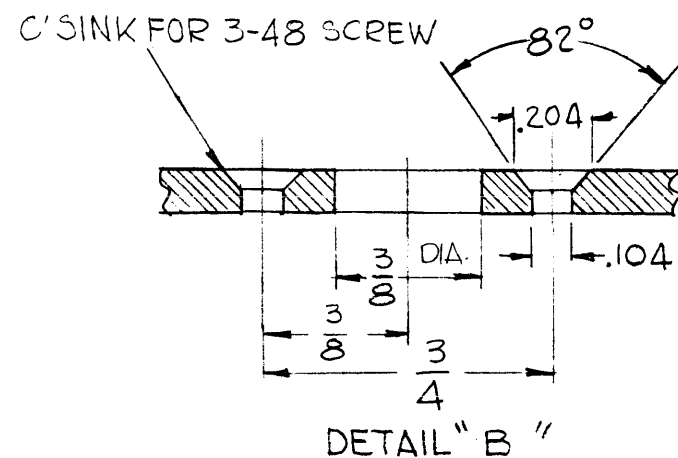
THE CONTENTS OF THIS DRAWING ARE THE EXCLUSIVE PROPERTY OF THE TECHNICAL MATERIEL CORP. ITS UNAUTHORIZED USE OR REPRODUCTION IN WHOLE OR IN PART IS STRICTLY FORBIDDEN.

REQ'D.	ITEM	PART NUMBER	DESCRIPTION	SYMBOL
4	2	FS-109-3	RING, STUD RETAINING	
4	1	FS-110-2	STUD, SLOTTED HEAD	

F. BUDETTI		LIST OF MATERIAL	
MATERIAL		THE TECHNICAL MATERIEL CORP. MAMARONECK, NEW YORK	
.064 THK. ALUMINUM 5052 - H-32		TITLE MOLDING, TOP	
FINISH S-115 SMOOTH GRAY ENAMEL S-114 PRIMER, S-404 IRIDITE		DRAWN G.D.L.	
UNLESS OTHERWISE SPECIFIED DIMENSIONS ARE IN INCHES AND INCLUDE CHEMICALLY APPLIED OR PLATED FINISHES		DATE 3-6-63	
DECIMALS .X ± .05 .XX ± .01 .XXX ± .005		CHECKED [Signature]	
FRACTIONS ± 1/64 ANGLES ± 0° 30'		DATE	
TOLERANCES		DATE	
		MECH. DES.	
		DATE	
		FINAL APPROVAL [Signature]	
		DATE	
		MS-3112	
		C	
		SHEET	
		REV. LTR.	

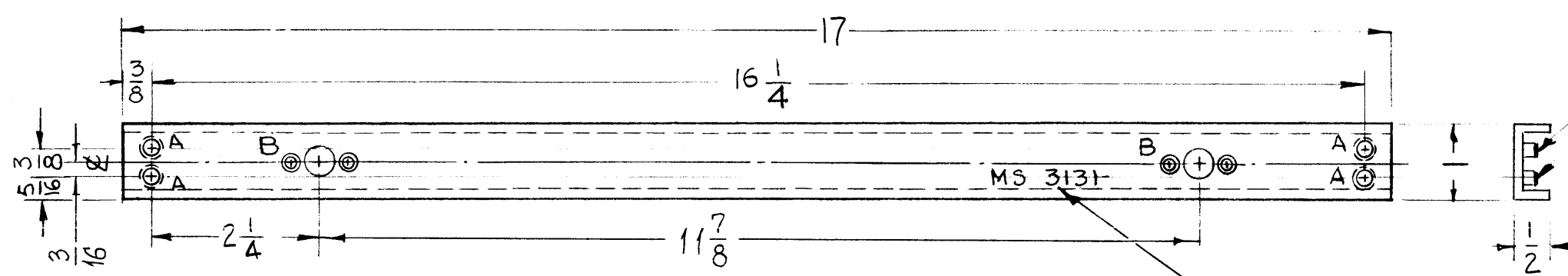
NOTES

HOLE	DESCRIPTION	REQ'D
A	.194-.191 DIA.	4
B	SEE DETAIL "B"	2



MS 3131

REVISIONS						
SYM	DESCRIPTION	DATE	E.M.N. NO.	DRAFT	CHKD	APPD
X1	MODEL WAS GPT-10KLF	2-17-66	X1	Jc		
Ø	ORIGINAL RELEASE FOR PRODUCTION	2-17-66	-M	Jc		



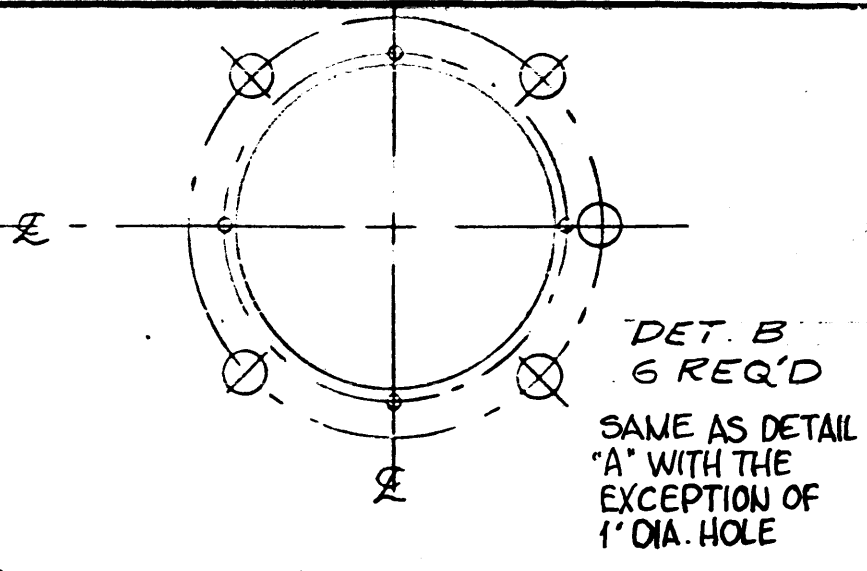
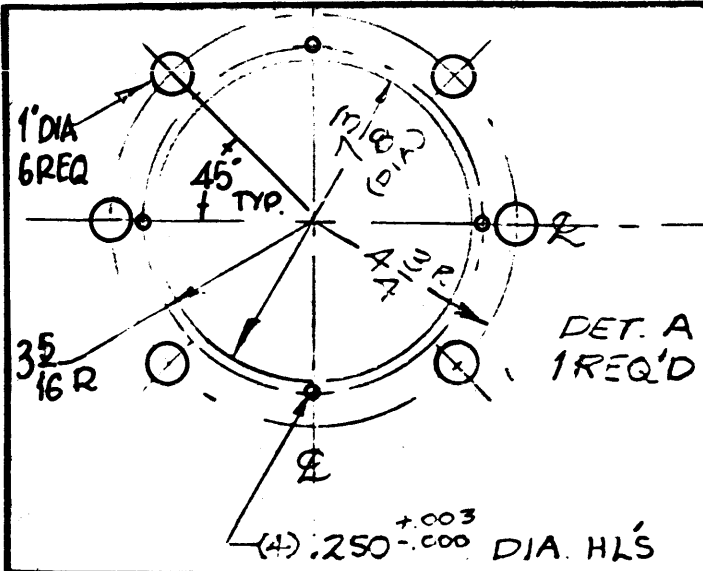
① MOUNT IN ALL "A" HOLES ITEM (1) AS SHOWN AFTER FINISHING

MARK TMC PART NO. 1/8 HIGH GOTHIC AS SHOWN WITH LATEST REVISION LETTER.

4	1	NT-129-632-6	NUT, ROUND, SWAGE TYPE	A
REQ'D.	ITEM	PART NUMBER	DESCRIPTION	SYMBOL

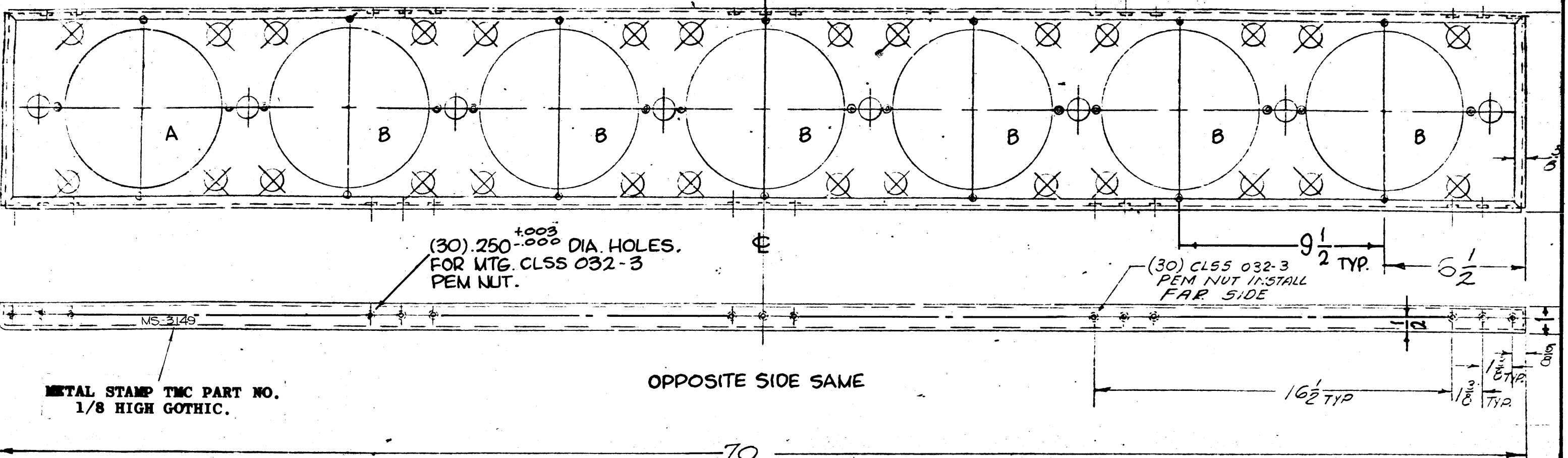
O. POSE		LIST OF MATERIAL	
MATERIAL EXTRUDED ALUMINUM CHANNEL 1/2 X 1" X 1/2 X 1/8 THK		THE TECHNICAL MATERIEL CORP. MAMARONECK, NEW YORK	
FINISH 3404- YEL. IRIDITE		TITLE SUPPORT, COVER, TOP IPA DRIVER DRAWER	
UNLESS OTHERWISE SPECIFIED DIMENSIONS ARE IN INCHES AND INCLUDE CHEMICALLY APPLIED OR PLATED FINISHES		DRAWN G.D.L. DATE 3-29-63	FINAL APPROVAL [Signature] DATE 2/17/66
DECIMALS .X ± .05 .XX ± .01 .XXX ± .005		CHECKED [Signature] DATE 12-1-65	MS 3131 Ø
TOLERANCES ± 1/64 ANGLES ± 0° 30'		ELECT. DES. DATE	
THE CONTENTS OF THIS DRAWING ARE THE EXCLUSIVE PROPERTY OF THE TECHNICAL MATERIEL CORP. ITS UNAUTHORIZED USE OR REPRODUCTION IN WHOLE OR IN PART IS STRICTLY FORBIDDEN.		MECH. DES. DATE	SHEET
		MIL Allen 2/17/66	REV. LTR.

NOTES



MS-3149 0

REVISIONS						
SYM	DESCRIPTION	DATE	E.M.N. NO.	DRAFT	CHKD	APPD
Ø	ORIGINAL RELEASE FOR PRODUCTION	6-9-65	MM	MM		



- UNLESS OTHERWISE SPECIFIED:**
1. USE MATERIAL THICKNESS FOR MAXIMUM RADIUS ON ALL BENDS.
  2. ALL ANGULAR BENDS 90°.
  3. REMOVE ALL BURRS AND SHARP EDGES.
  4. MOUNT INSERTS AFTER FINISHING.
- NOTES**

REQ'D.	ITEM	PART NUMBER	DESCRIPTION	SYMBOL
		TER-100K		
Q'TY./UNIT	MODEL USED ON	ASS'Y. NO.		
SCALE	CODE			

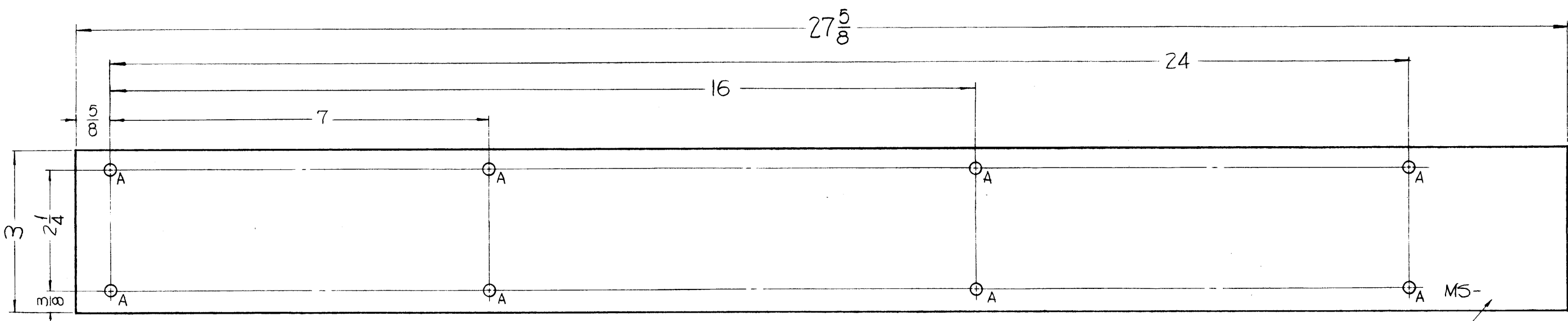
THE CONTENTS OF THIS DRAWING ARE THE EXCLUSIVE PROPERTY OF THE TECHNICAL MATERIEL CORP. ITS UNAUTHORIZED USE OR REPRODUCTION IN WHOLE OR IN PART IS STRICTLY FORBIDDEN.

F. BUDETTI		LIST OF MATERIAL			
MATERIAL		THE TECHNICAL MATERIEL CORP. MAMARONECK, NEW YORK			
FINISH		TITLE			
S904 YELLOW IRIDITE		PLATE, TOP, RESISTOR MTG.			
UNLESS OTHERWISE SPECIFIED DIMENSIONS ARE IN INCHES AND INCLUDE CHEMICALLY APPLIED OR PLATED FINISHES		DRAWN	DATE	FINAL APPROVAL	DATE
DECIMALS		MM	6/9/65	22	6/9/65
.X ± .05		CHECKED			
.XX ± .01					
.XXX ± .005		ELECT. DES.			
TOLERANCES					
FRACTI NS		MECH. DES.			
± 1/64		J.R.S.	6/9/65		
ANGLES					
± 0° 30'					
				MS-3149	Ø
				SHEET	REV. LTR.

HOLE	DESCRIPTION	REQ.
A	13/64 DIA.	8

MS-3204

REVISIONS						
SYM	DESCRIPTION	DATE	E.M.N. NO.	DRAFT	CHKD	APPD
0	ORIGINAL RELEASE FOR PRODUCTION	5-27-64	0	A.M.		



METAL STAMP TMC PART NO. 1/8 HIGH GOTHIC AS SHOWN WITH LATEST REVISIONS

**NOTES**

1	GPT-200K	AX-395
Q'TY./UNIT	MODEL USED ON	ASS'Y. NO.
SCALE	CODE	
THE CONTENTS OF THIS DRAWING ARE THE EXCLUSIVE PROPERTY OF THE TECHNICAL MATERIEL CORP. ITS UNAUTHORIZED USE OR REPRODUCTION IN WHOLE OR IN PART IS STRICTLY FORBIDDEN.		

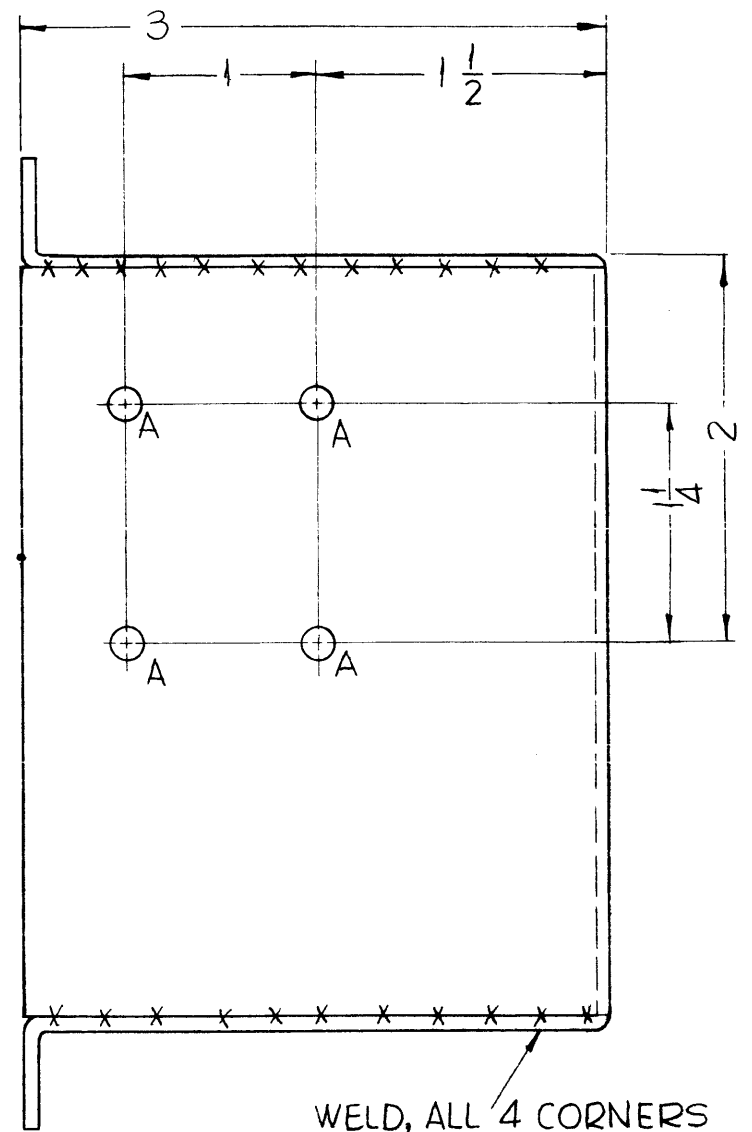
REQ'D.	ITEM	PART NUMBER	DESCRIPTION	SYMBOL
<b>F. BUDETTI</b>				
<b>MATERIAL</b>			<b>LIST OF MATERIAL</b>	
.064 THICK ALUMINUM 5052-H32			THE TECHNICAL MATERIEL CORP. MAMARONECK, NEW YORK	
<b>FINISH</b>			<b>TITLE</b>	
COPPER FLASH			COVER, CONDUIT, RACEWAY	
<b>UNLESS OTHERWISE SPECIFIED DIMENSIONS ARE IN INCHES AND INCLUDE CHEMICALLY APPLIED OR PLATED FINISHES</b>			<b>DRAWN</b> SRG	<b>DATE</b> 5-2-63
			<b>CHECKED</b> aa	<b>DATE</b>
			<b>ELECT. DES.</b> [Signature]	<b>DATE</b> 3/18/64
			<b>MECH. DES.</b> [Signature]	<b>DATE</b> 2/3/64
			<b>FINAL APPROVAL</b> [Signature]	<b>DATE</b>
			MS-3204	
			<b>SHEET</b>	<b>REV. LTR.</b>



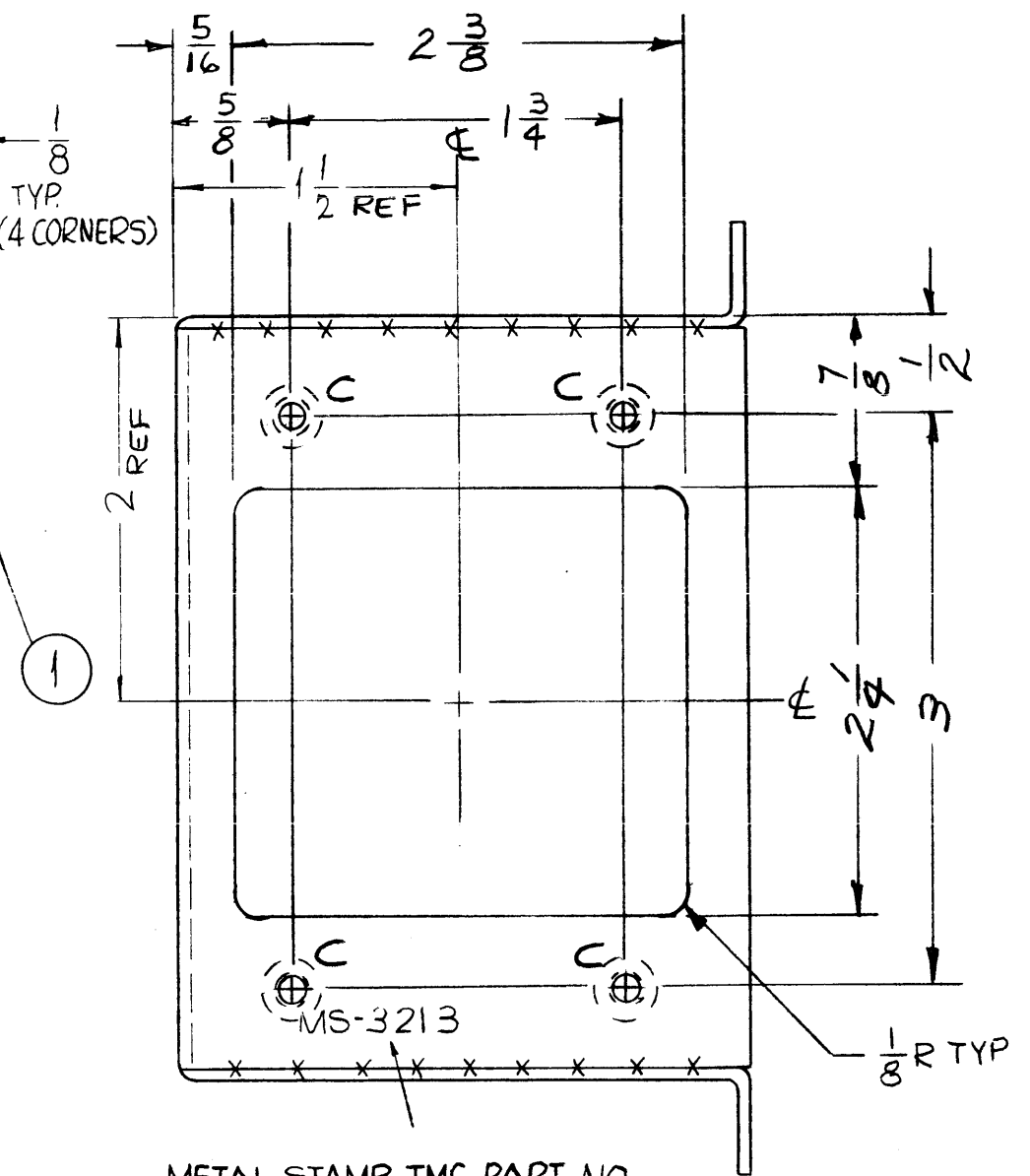
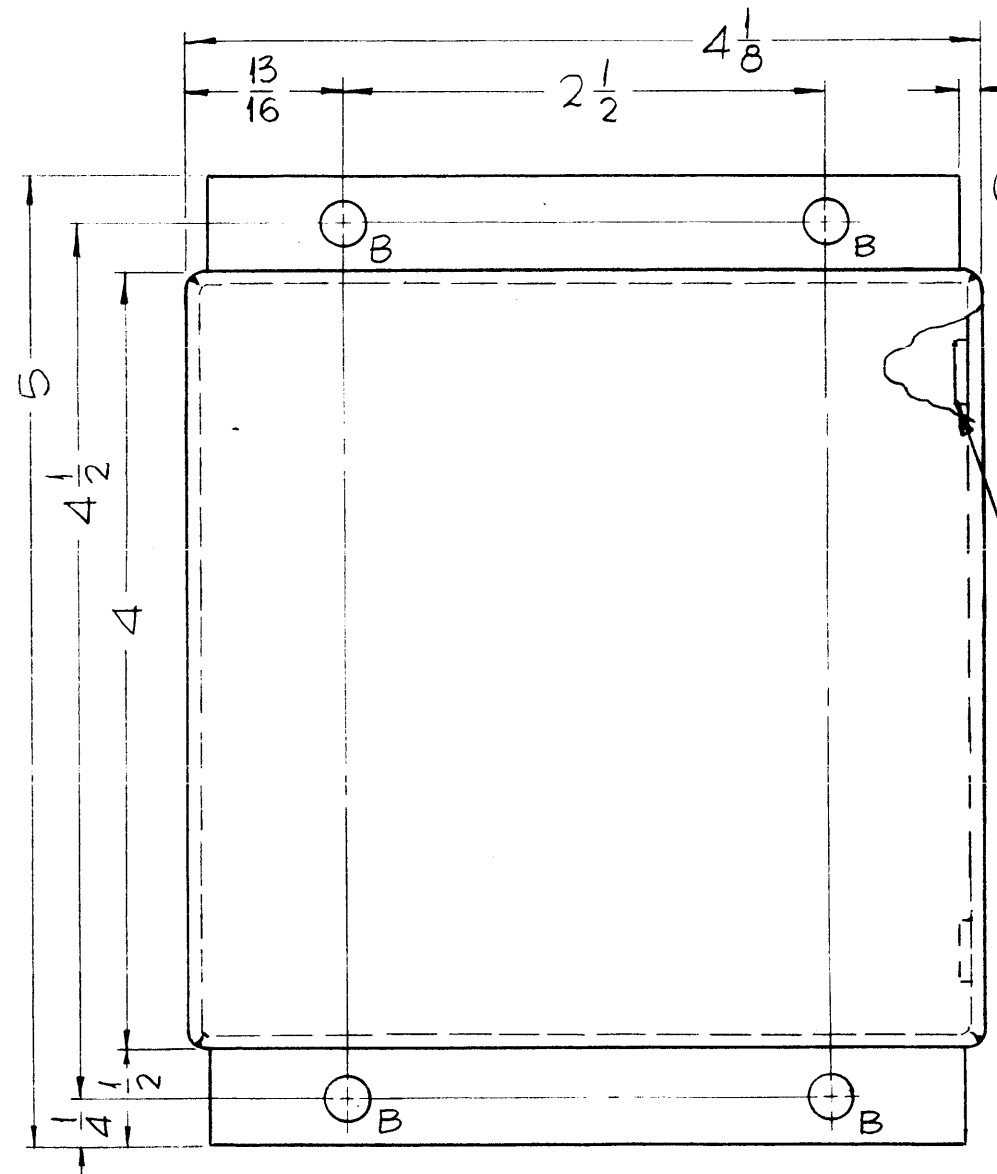
MS-3213

THE CONTENTS OF THIS DRAWING ARE THE EXCLUSIVE PROPERTY OF THE TECHNICAL MATERIEL CORP. ITS UNAUTHORIZED USE OR REPRODUCTION IN WHOLE OR IN PART IS STRICTLY FORBIDDEN.

**HOLES:**  
 A ~ 11/64 DIA. — 4 REQ.  
 B ~ 15/64 DIA. — 4 REQ.  
 C ~ .221-.224 DIA. — 4 REQ.



WELD, ALL 4 CORNERS AND GRIND SMOOTH.



METAL STAMP TMC PART NO. 1/8 HIGH GOTHIC W/LATEST REV. LETTER.

**UNLESS OTHERWISE SPECIFIED:**

1. USE MATERIAL THICKNESS FOR MAXIMUM RADIUS ON ALL BENDS.
2. ALL ANGULAR BENDS 90°.
3. REMOVE ALL BURRS AND SHARP EDGES.
4. MOUNT INSERTS AFTER FINISHING.

REF: LD-1269

Ø ORIGINAL RELEASE FOR PROD.	5-18-64	SRG				
SYM	DESCRIPTION	DATE	CH. NO.	DRAFTS	CHECKER	ENG. APP.
UNLESS OTHERWISE SPECIFIED:		SCALE: 1"=1"				
DIMENSIONS ARE IN INCHES		MAXIMUM ALLOWABLE TOLERANCES HAVE BEEN DETERMINED AND ANY DEVIATIONS WILL BE CAUSE FOR REJECTION.				
TOLERANCES ON FRACTIONS ± 1/64		DECIMALS ± .005		ANGLES ± 1/2°		
REMOVE ALL BURRS AND SHARP EDGES		1	GPT-200K	AX-395	A-281B	7-18-63
REQ. PER UNIT	MODEL	SECTION	ASS'Y. NO.	DATE		
	USED ON					

4	1	NT-129-832-4	NUT, ROUND, SWAGE TYPE		
REQ.	ITEM	PART NO.	DESCRIPTION	SYMBOL	
.081 THICK STOCK SIZE			THE TECHNICAL MATERIEL CORP. MAMARONECK, NEW YORK		
ALUMINUM			CHASSIS, METERING CIRCUIT MTG.		
MATERIAL					
5052-H32		SRG	aa	RK	
TYPE & TEMPER		HEAT TREAT. SPEC.	DRAWN	CHECKED	FINAL APPROVAL
S-245 SILVER PLATE BRIGHT			DB	meah/64	MS-3213
FINISH & SPEC. NO.		ELEC. DES. APP.	MECH. DES. APP.		

MS-3214 Ø

**HOLES**

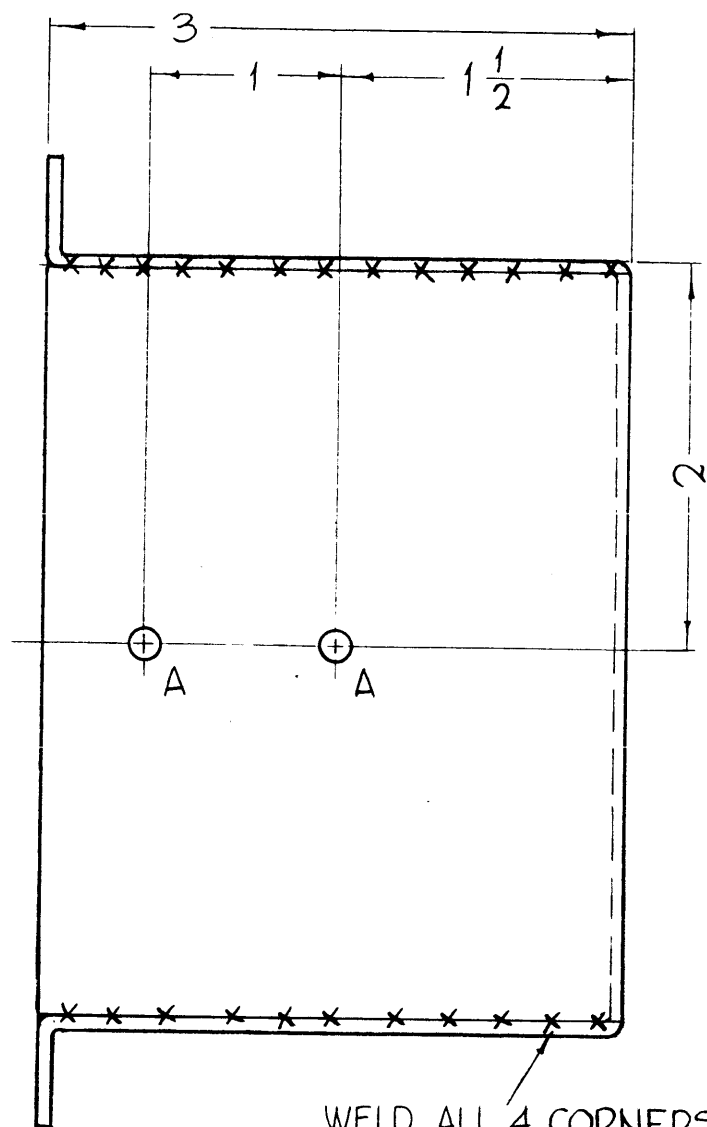
A - 11/64 DIA.  
B - 15/64 DIA.

**REQ.**

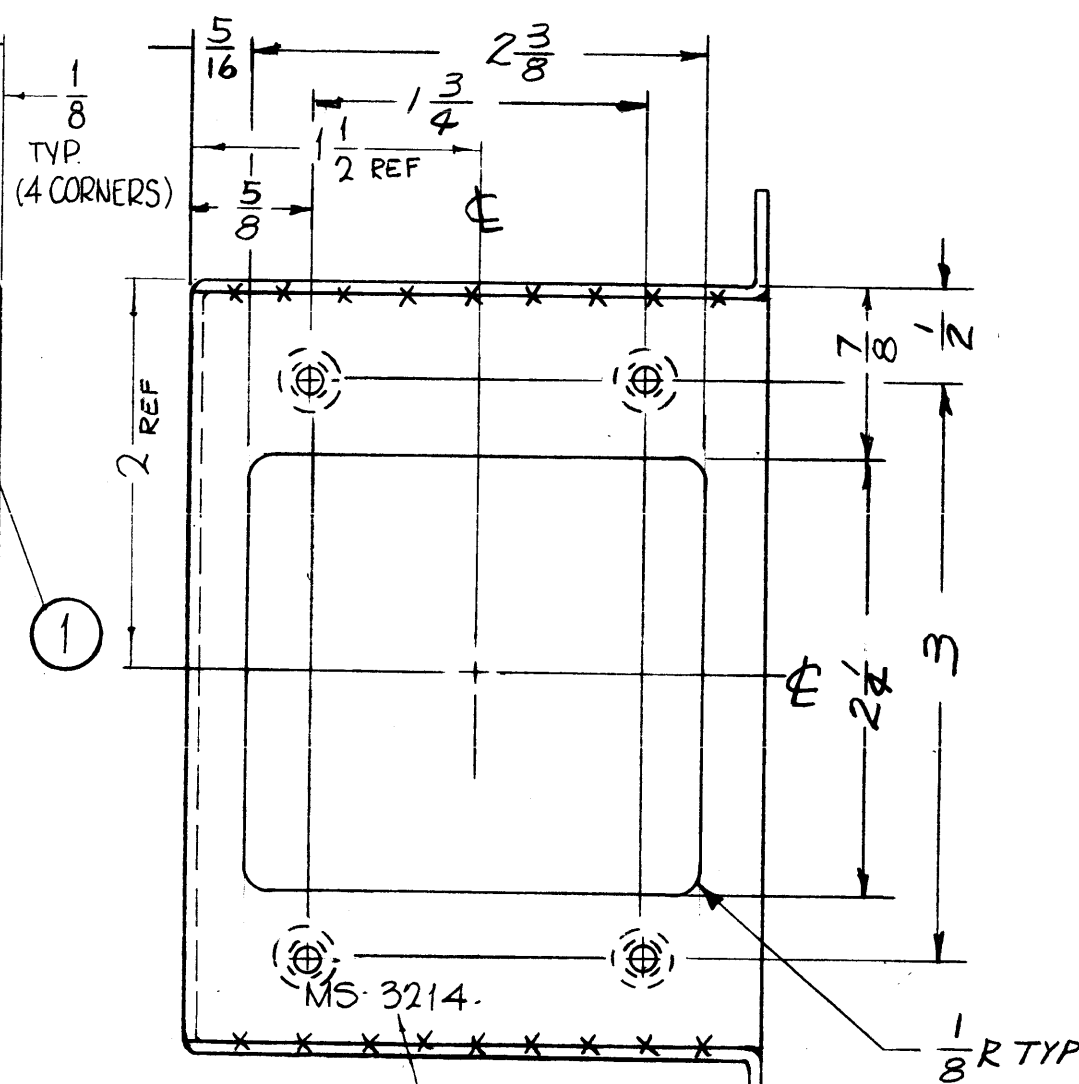
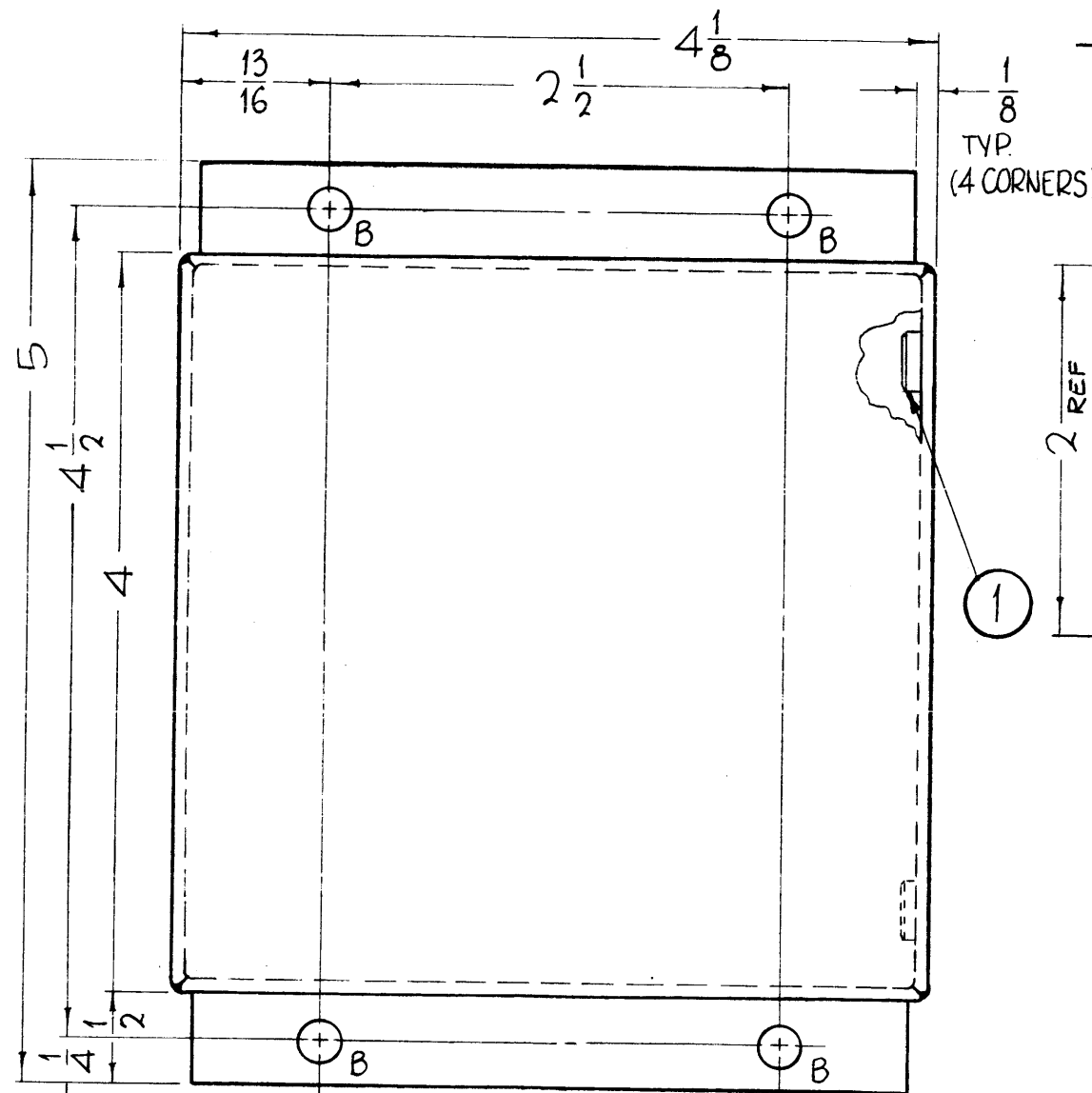
2  
4

C - .221 MIN., .224 MAX. DIA'S FOR MTG. ITEM NO.1 NT-129-832-4.

4 REQ.



WELD, ALL 4 CORNERS AND GRIND SMOOTH.



METAL STAMP TMC PART NO. 1/8 HIGH GOTHIC W/LATEST REV. LETTER

REF. TMC DWG. NO. LD-1270

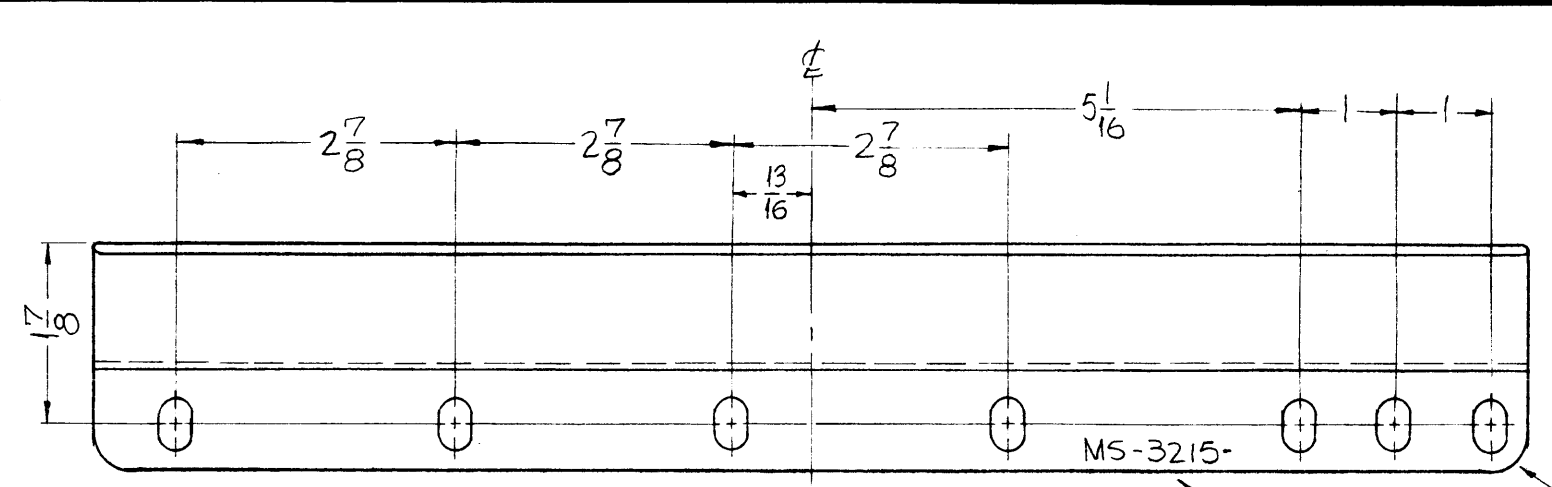
**UNLESS OTHERWISE SPECIFIED:**

1. USE MATERIAL THICKNESS FOR MAXIMUM RADIUS ON ALL BENDS.
2. ALL ANGULAR BENDS 90°.
3. REMOVE ALL BURRS AND SHARP EDGES.
4. MOUNT INSERTS AFTER FINISHING.

Ø	ORIG. RELEASE FOR PROD	5-18-64		SRG		
SYM	DESCRIPTION	DATE	CH. NO.	DRAFTS	CHECKER	ENG. APP.
UNLESS OTHERWISE SPECIFIED:		SCALE: 1" = 1"				
DIMENSIONS ARE IN INCHES		MAXIMUM ALLOWABLE TOLERANCES HAVE BEEN DETERMINED AND ANY DEVIATIONS WILL BE CAUSE FOR REJECTION. REMOVE ALL BURRS AND SHARP EDGES				
TOLERANCES ON FRACTIONS ± 1/64		DECIMALS ± .005		ANGLES ± 1/2°		

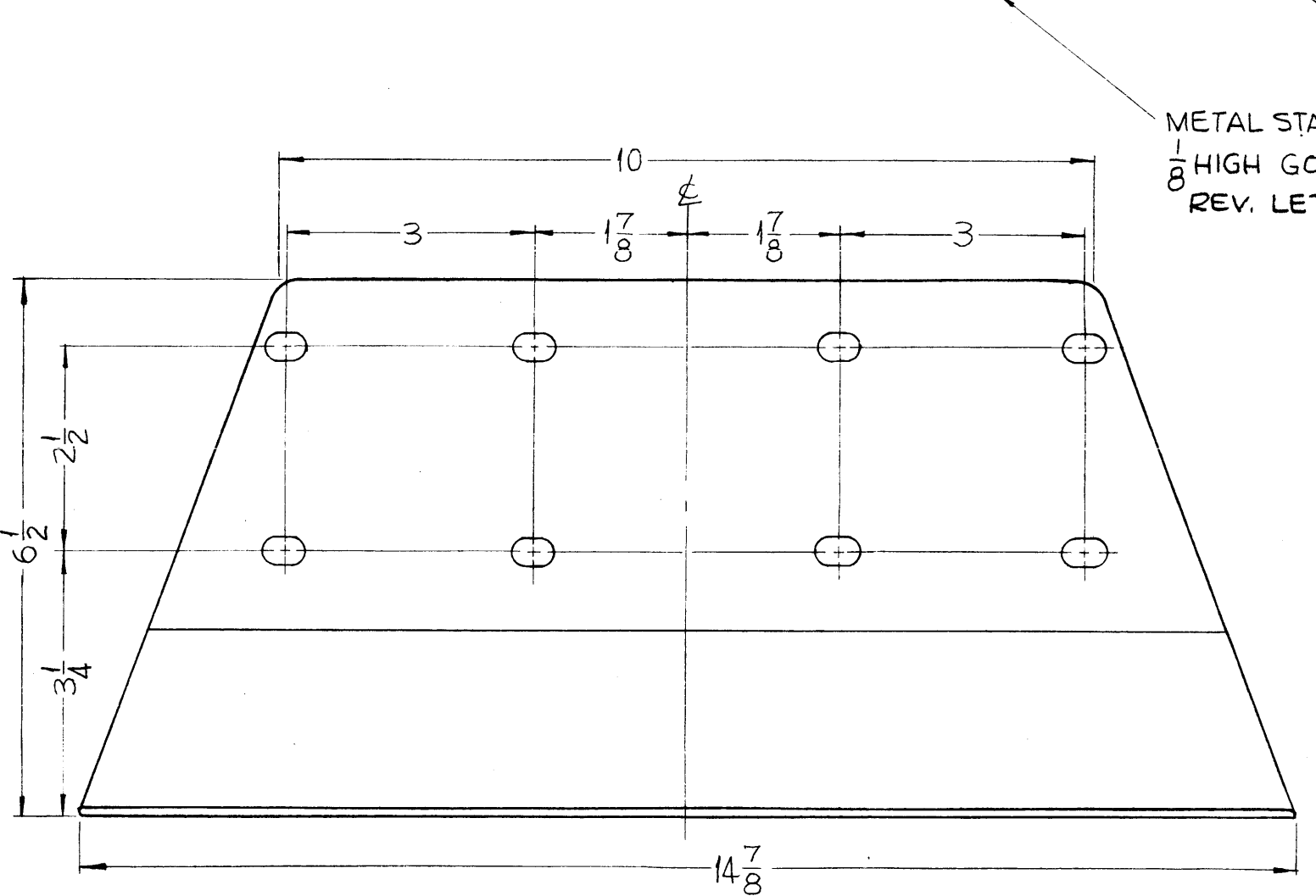
1	GPT-200K	AX-395	A-2817	7-8-63
REQ. PER UNIT	MODEL	SECTION	ASSY. NO.	DATE
USED ON				

3	1	NT-129-832-4	NUT, ROUND, SWAGE TYPE	
REQ.	ITEM	PART NO.	F. BUDETTI	DESCRIPTION
.001 THICK STOCK SIZE			THE TECHNICAL MATERIEL CORP. MAMARONECK, NEW YORK	
ALUMINUM			CHASSIS, METERING CIRCUIT MTG.	
5052, H-32			John C. Biele	aa
TYPE & TEMPER		HEAT TREAT. SPEC.	DRAWN	CHECKER
S-245 SILVER PLATE BRIGHT			aa	2/4/64
FINISH & SPEC. NO.		ELEC. DES. APP.	MECH. DES. APP.	FINAL APPROVAL
				MS-3214 Ø



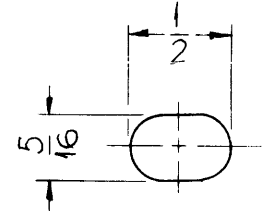
REVISIONS					
SYM	DESCRIPTION	DATE	E.M.N. NO.	DRAFT	CHKD APPD
Ø	ORIGINAL RELEASE FOR PRODUCTION	5-18-64		SRG	

MS-3215

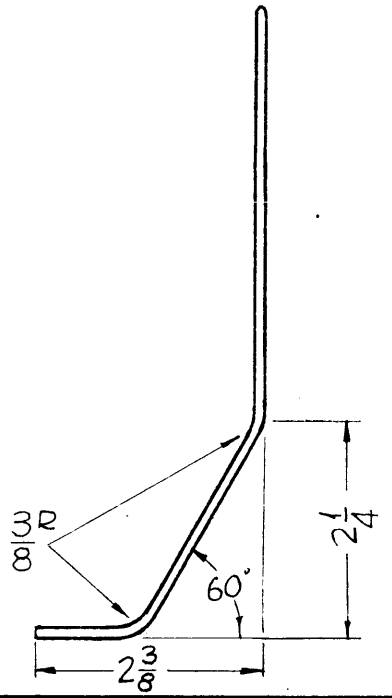


METAL STAMP TMC PART NO. 1/8 HIGH GOTHIC W/LATEST REV. LETTER.

3/8 R. (ALL CORNERS)



SLOT DETAIL  
(15 REQ)



NOTE:  
ROUND ALL EDGES 1/32 RADIUS.  
POLISH BEFORE PLATING.

1	GPT-200K	AX-395
T.Y./UNIT	MODEL USED ON	ASS'Y. NO.
SCALE 1/2:1	CODE	

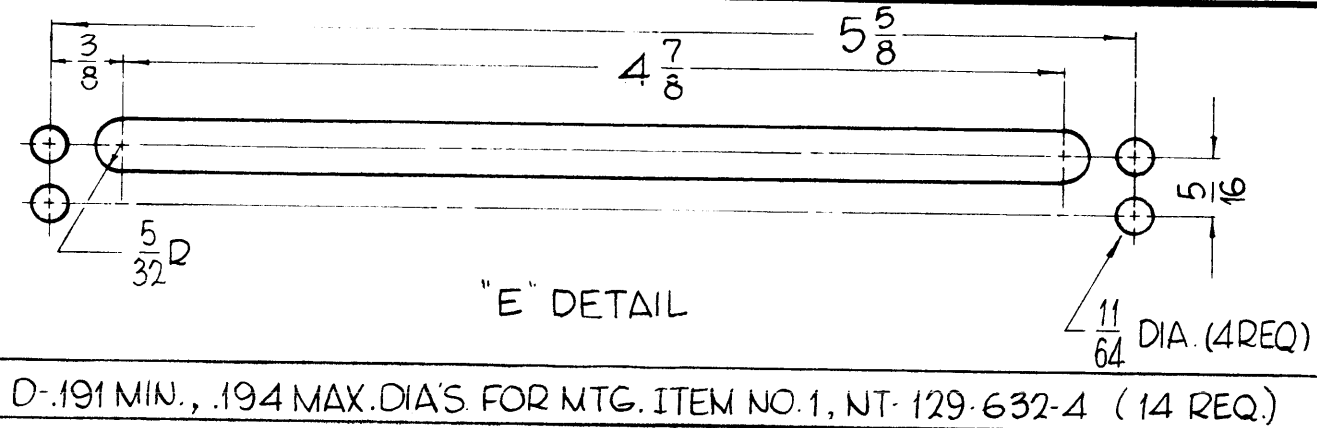
THE CONTENTS OF THIS DRAWING ARE THE EXCLUSIVE PROPERTY OF THE TECHNICAL MATERIEL CORP. ITS UNAUTHORIZED USE OR REPRODUCTION IN WHOLE OR IN PART IS STRICTLY FORBIDDEN.

REQ'D.	ITEM	PART NUMBER	DESCRIPTION	SYMBOL
F. BUDETTI LIST OF MATERIAL				
MATERIAL .097 THICK HOT ROLLED COPPER			THE TECHNICAL MATERIEL CORP. MAMARONECK, NEW YORK	
FINISH S-245 SILVER PLATE, BRIGHT			TITLE BRACKET, CAPACITOR CONNECTOR	
UNLESS OTHERWISE SPECIFIED DIMENSIONS ARE IN INCHES AND INCLUDE CHEMICALLY APPLIED OR PLATED FINISHES				
DRAWN SRG		DATE 4-11-63	FINAL APPROVAL RAC	
CHECKED aa		DATE		
ELECT. DES. SRG		DATE 4/15/64	MS-3215	
MECH. DES. SRG		DATE 2/9/64	Ø	
			SHEET	REV. LTR.

NOTES

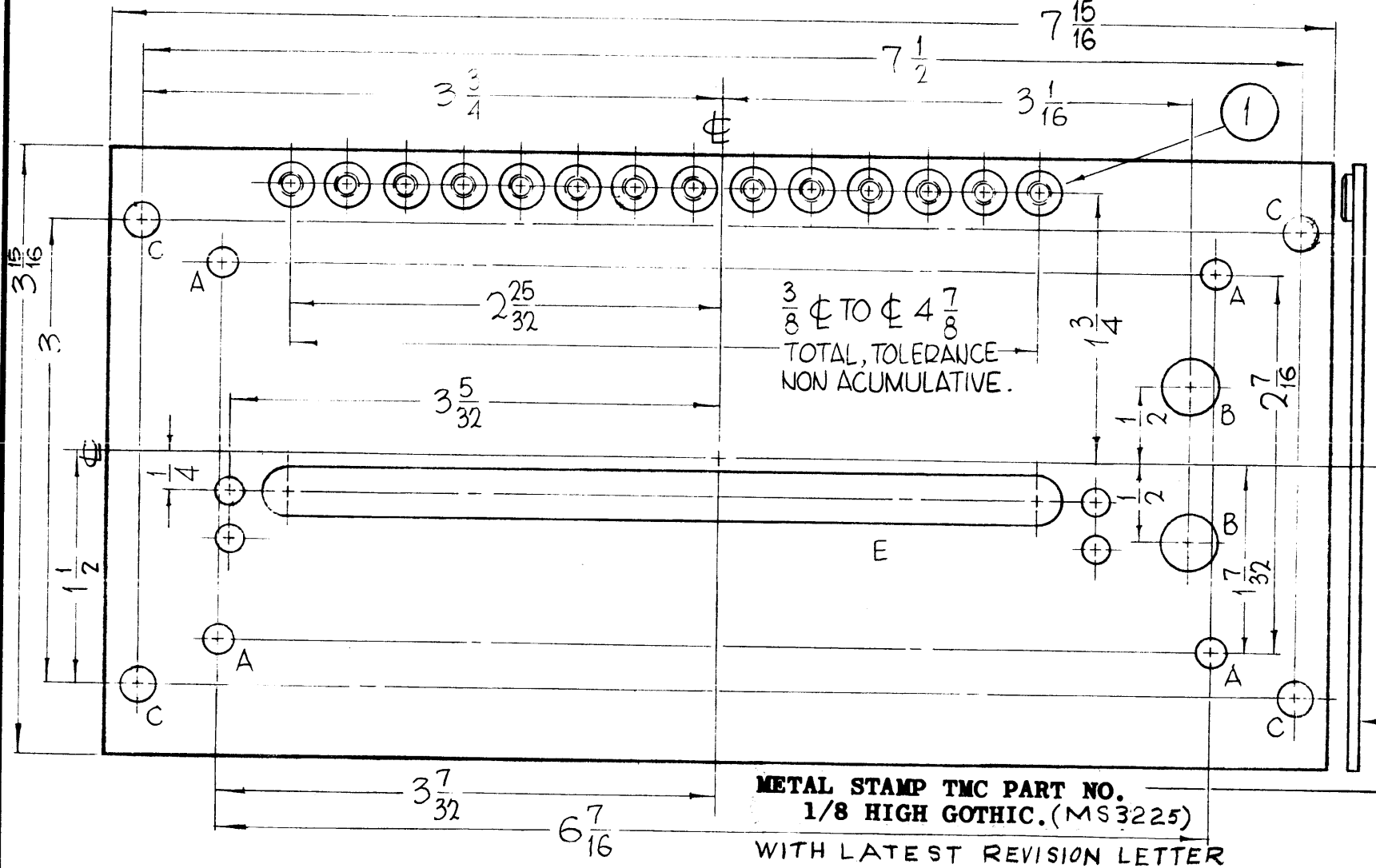
**HOLES**

- A-13/64 DIA. (4 REQ.)
- B-3/8 DIA. (2 REQ.)
- C-15/64 DIA. (4 REQ.)



MS-3225

REVISIONS					
SYM	DESCRIPTION	DATE	E.M.N. NO.	DRAFT	CHKD
0	ORIGINAL RELEASE FOR PRODUCTION	5-28-64	0	A.M.	



**UNLESS OTHERWISE SPECIFIED:**

1. USE MATERIAL THICKNESS FOR MAXIMUM RADIUS ON ALL BENDS.
2. ALL ANGULAR BENDS 90°.
3. REMOVE ALL BURRS AND SHARP EDGES.
4. MOUNT INSERTS AFTER FINISHING.

REF- TMC DWG. NO. LD-1235

REQ'D.	ITEM	PART NUMBER	DESCRIPTION	SYMBOL
14	1	NT-129-632-4	NUT, ROUND, SWAGE TYPE	

F. BUDETTI

**LIST OF MATERIAL**

MATERIAL .081 THICK, ALUMINUM, 5052 - H-32

**THE TECHNICAL MATERIEL CORP.**  
MAMARONECK, NEW YORK

FINISH SEE NOTES

TITLE PLATE, TERMINAL MOUNTING

**FINISH**

- S404- IRIDITE, 14-2 AL-COAT
  - S114-ZINC CHROMATE PRIMER
  - S220-RCAF GRAY SEMI-GLOSS ENAMEL FINISH.
- FRONT AND EDGES ONLY

**NOTES**

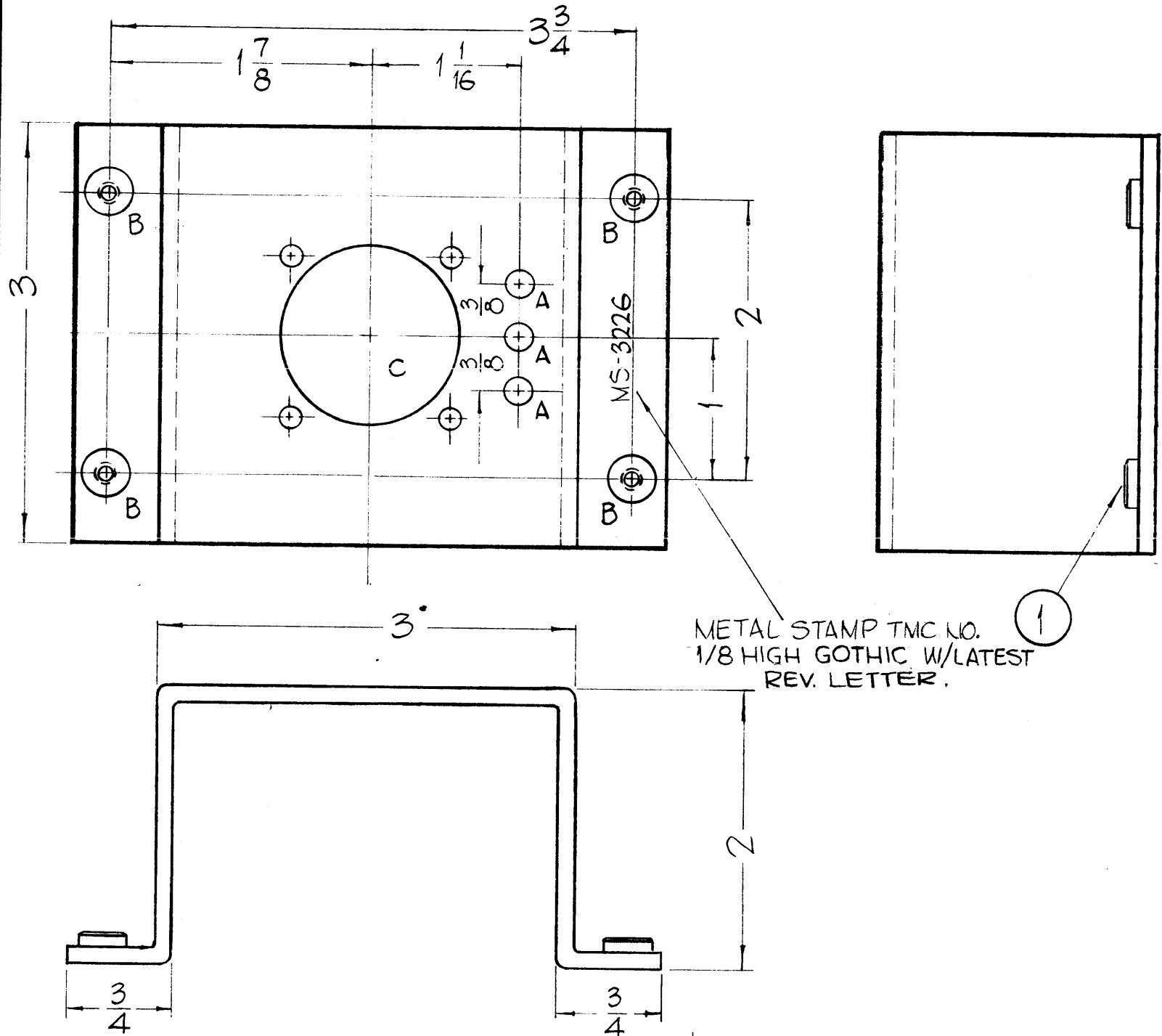
1	GPT-200K	AX-392
Q'TY./UNIT	MODEL USED ON	ASS'Y. NO.
SCALE	CODE	

THE CONTENTS OF THIS DRAWING ARE THE EXCLUSIVE PROPERTY OF THE TECHNICAL MATERIEL CORP. ITS UNAUTHORIZED USE OR REPRODUCTION IN WHOLE OR IN PART IS STRICTLY FORBIDDEN.

UNLESS OTHERWISE SPECIFIED DIMENSIONS ARE IN INCHES AND INCLUDE CHEMICALLY APPLIED OR PLATED FINISHES

DECIMALS .X ± .05 .XX ± .01 .XXX ± .005	TOLERANCES	FRACTIONS ± 1/64 ANGLES ± 6° 30'
--	------------	---

DRAWN John C. Biele	DATE 12-1-62	FINAL APPROVAL RJC	DATE
CHECKED JTB	DATE 1/1/64	MS-3225	
MECH. DES. JTB	DATE 2/3/64	SHEET	REV. LTR. 0

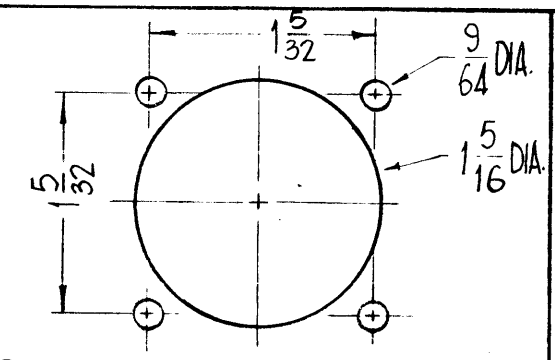


MS-3226 Ø

REVISIONS

SYM	DESCRIPTION	DATE	E.M.N. NO.	DRAFT	CHKD	APFD
Ø	ORIGINAL RELEASE FOR PRODUCTION	5-18-64		SRG		

**HOLES** —  
 A - 11/64 DIA. 3 REQ.  
 B - .250 MIN., .253 MAX. 4 REQ.



C - 1 REQ. REF-TMC DWG. LD-1228

REQ'D.	ITEM	PART NUMBER	DESCRIPTION	SYMBOL
4	1	NT-129-1032-6	NUT, ROUND SWAGE TYPE	

F. BUDETTI		LIST OF MATERIAL	
MATERIAL	1/8 THICK, ALUMINUM, 5052-H-32	THE TECHNICAL MATERIEL CORP. MAMARONECK, NEW YORK	
FINISH	S404-IRIDITE	TITLE: BRACKET, CONN. MTG.	

UNLESS OTHERWISE SPECIFIED  
 USE MAT'L THICKNESS MAX. RADIUS ON ALL BENDS.  
 MOUNT INSERTS AFTER FINISHING.  
 ALL BENDS 90°.

NOTES

1	GPT-200K	AX-395
QTY./UNIT	MODEL USED ON	ASSY. NO.
SCALE 1"=1"	CODE A	

THE CONTENTS OF THIS DRAWING ARE THE EXCLUSIVE PROPERTY OF THE TECHNICAL MATERIEL CORP. ITS UNAUTHORIZED USE OR REPR. DUCTION IN WHOLE OR IN PART IS STRICTLY FORBIDDEN.

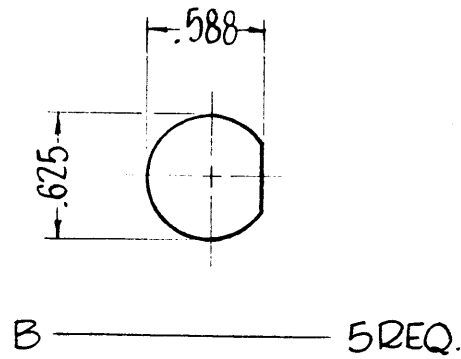
UNLESS OTHERWISE SPECIFIED  
 DIMENSIONS ARE IN INCHES AND INCLUDE  
 CHEMICALLY APPLIED OR PLATED FINISHES

DECIMALS	TOLERANCES	FRACTIONS
.X ± .05		± 1/64
.XX ± .01		AN LES
.XXX ± .005		± 0° 30'

DRAWN	DATE	FINAL APPROVAL	DATE
John C. Biele	1-11-63		
CHECKED aa	DATE		
ELECT. DES. CB	DATE 3/18/63	MS-3226	Ø
MECH. DES. [Signature]	DATE	SHEET	REV. LTR.

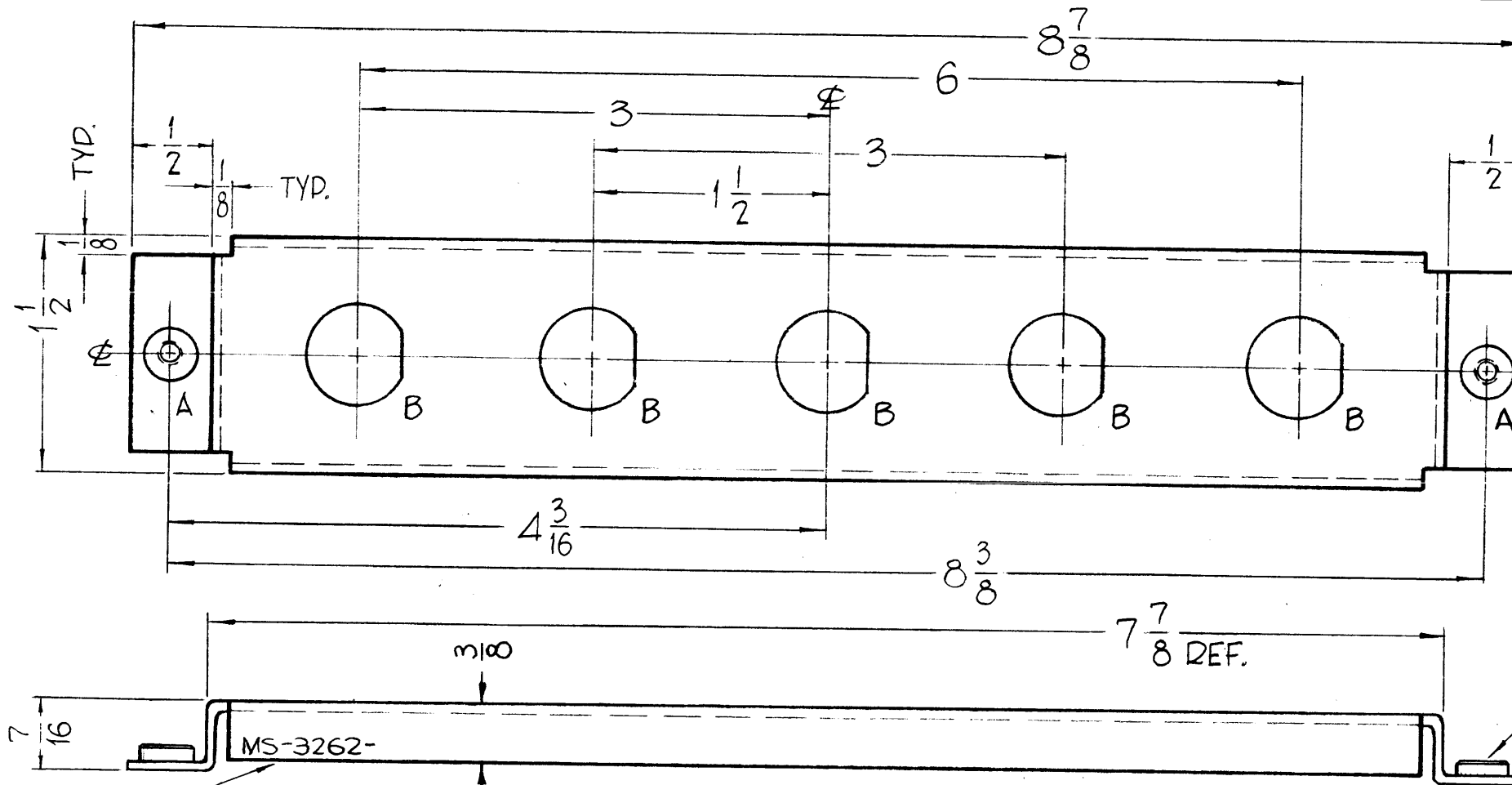
HOLES -

A - .221 MIN. .224 MAX. DIA. FOR MOUNTING NT-129-832-4. 2 REQ.



MS-3262 0

REVISIONS					
SYM	DESCRIPTION	DATE	E.M.N. NO	DRAFT	CHKD APPD
A	REVISED + REDRAWN				
0	ORIGINAL RELEASE FOR PRODUCTION	4-24-64		SRG	



METAL STAMP TMC PART NO. W/LATEST REV. LETTER 1/8 HIGH GOTHIC.

REF: LD-1241 & LD-1242

REQ'D.	ITEM	PART NUMBER	DESCRIPTION	SYMBOL
2	1	NT-129-832-4	NUT, ROUND, SWAGE TYPE	

LIST OF MATERIAL

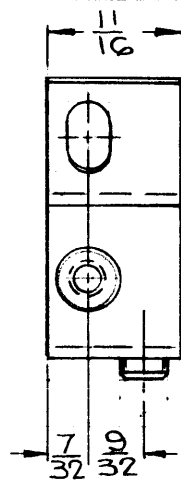
MATERIAL 3064 THICK ALUMINUM, 5052 - H-32	THE TECHNICAL MATERIEL CORP. MAMARONECK, NEW YORK			
FINISH S404-IRIDITE	TITLE BRACKET, FUSE MOUNTING			
UNLESS OTHERWISE SPECIFIED DIMENSIONS ARE IN INCHES AND INCLUDE CHEMICALLY APPLIED OR PLATED FINISHES	DRAWN John C. Biele	DATE 8/2/62	FINAL APPROVAL RXX	
	CHECKED QA	DATE		
DECIMALS .X ± .05 .XX ± .01 .XXX ± .005	TOLERANCES	FRACTIONS ± 1/64 ANGLES ± 0° 30'	ELECT. DES. JB JB	DATE 2/1/64
			MECH. DES. huc	DATE 2/2/64
			SHEET MS-3262	REV. LTR. 0

-USE MATERIAL THICKNESS FOR MAX. RADIUS ON ALL BENDS.

-ALL ANGLES 90°.

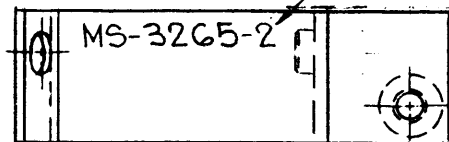
NOTES

THE CONTENTS OF THIS DRAWING ARE THE EXCLUSIVE PROPERTY OF THE TECHNICAL MATERIEL CORP. ITS UNAUTHORIZED USE OR REPRODUCTION IN WHOLE OR IN PART IS STRICTLY FORBIDDEN.



MS-3265-2

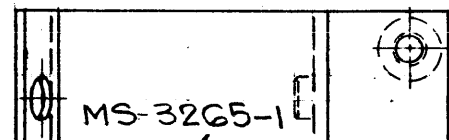
METAL STAMP TMC PART NO.  
1/8 HIGH GOTHIC.



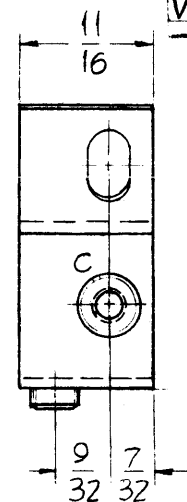
MS-3265 0

REVISIONS

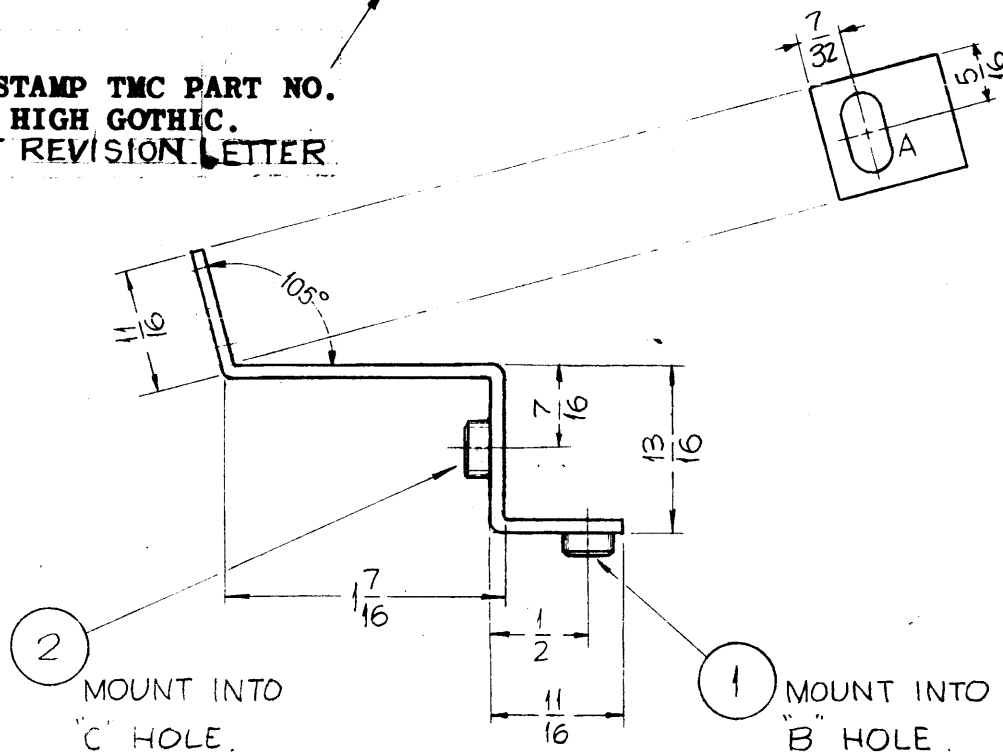
SYM	DESCRIPTION	DATE	E.M.N. NO.	DRAFT	CHKD	APPD
0	ORIGINAL RELEASE FOR PRODUCTION	5-13-64	0	A.M.		



METAL STAMP TMC PART NO.  
1/8 HIGH GOTHIC.  
W/LATEST REVISION LETTER



MS-3265-1

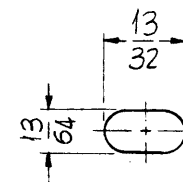


2 MOUNT INTO  
"C" HOLE.

1 MOUNT INTO  
"B" HOLE.

HOLES:

- A ~ SEE DETAIL
- B ~ .191-.194 DIA. (1 REQ.)
- C ~ .221-.224 DIA. (1 REQ.)



A-DETAIL  
(1 REQ.)

REQ'D.	ITEM	PART NUMBER	DESCRIPTION	SYMBOL
1	2	NT-129-832-4	NUT ROUND, SWAGE TYPE	C
1	1	NT-129-632-4	NUT ROUND, SWAGE TYPE	B

F. BUDETTI LIST OF MATERIAL

MATERIAL: .064 THICK ALUMINUM 5052 H-32  
FINISH: S 404 YELLOW IRIDITE, S 114 ZINC CHROMATE, S 115 TMC GRAY

THE TECHNICAL MATERIEL CORP.  
MAMARONECK, NEW YORK

TITLE: BRACKET, SUPPORT, METER PANEL

UNLESS OTHERWISE SPECIFIED DIMENSIONS ARE IN INCHES AND INCLUDE CHEMICALLY APPLIED OR PLATED FINISHES	DRAWN: SRG	DATE: 2-6-63	FINAL APPROVAL: [Signature]	DATE:
DECIMALS: .X ± .05, .XX ± .01, .XXX ± .005	CHECKED: [Signature]	DATE:	MS-3265	O
FRACTIONS: ± 1/64, AM LES, ± 0° 30'	ELECT. DES: [Signature]	DATE: 7/2/64		

NOTE: UNLESS OTHERWISE SPECIFIED  
USE MATERIAL THICKNESS FOR  
MAXIMUM RADIUS ON ALL BENDS.  
MOUNT INSERTS AFTER FINISHING  
ALL BENDS 90°

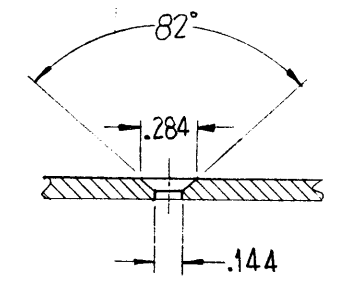
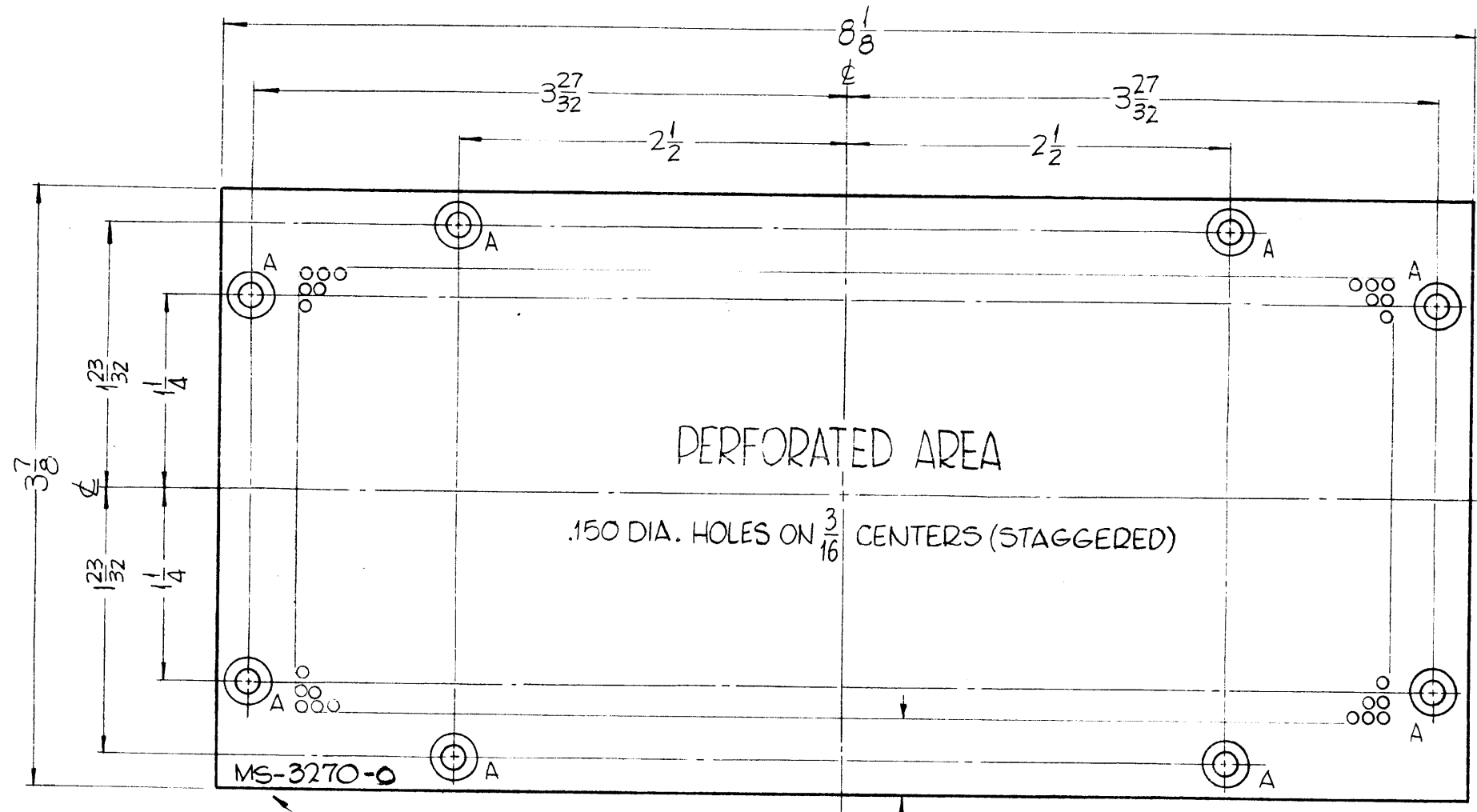
NOTES

1 ea	GPT-200K	AM-118
Q'TY./UNIT	MODEL USED ON	ASS'Y. NO.
SCALE	CODE: A	
THE CONTENTS OF THIS DRAWING ARE THE EXCLUSIVE PROPERTY OF THE TECHNICAL MATERIEL CORP. ITS UNAUTHORIZED USE OR REPRODUCTION IN WHOLE OR IN PART IS STRICTLY FORBIDDEN.		

MS-3270 A

REVISIONS

SYM	DESCRIPTION	DATE	E.M.N. NO.	DRAFT	CHKD	APPD
0	ORIGINAL RELEASE FOR PRODUCTION	2/28/64		A.M.		
A	FINISH & W. LATEST REV. LETTER NOTES ADDED	7.13.64	11777	WB	JCS	⊗



C'SINK FOR  
6-32 F.H.S.

A-DETAIL  
(8 REQ.)

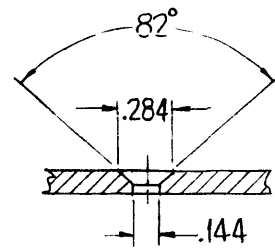
METAL STAMP TMC PART NO.  
1/8 HIGH GOTHIC AS SHOWN,  
WITH LATEST REVISION  
LETTER.

REQ'D.	ITEM	PART NUMBER	DESCRIPTION	SYMBOL	
F. BUDETTI LIST OF MATERIAL					
MATERIAL .064 THICK ALUMINUM			THE TECHNICAL MATERIEL CORP. MAMARONECK, NEW YORK		
FINISH S404 YELLOW IRIDITE					
			TITLE COVER, BOTTOM		
UNLESS OTHERWISE SPECIFIED DIMENSIONS ARE IN INCHES AND INCLUDE CHEMICALLY APPLIED OR PLATED FINISHES			DRAWN <i>SRG</i> DATE 2-18-63 CHECKED <i>JCS</i> DATE 2/11/64 ELECT. DES. <i>JCS</i> DATE 2/11/64 MECH. DES. <i>WB</i> DATE 2/13/64	FINAL APPROVAL <i>RWC</i>  MS-3270 SHEET	DATE  REV. LTR. A
DECIMALS .X ± .05 .XX ± .01 .XXX ± .005		FRACTIONS ± 1/64 AN LES ± 0° 30'		TOLERANCES	

1	GPT-200K	AZ-101
QTY./UNIT	MODEL USED ON	ASS'Y. NO.
SCALE 1:1	CODE A	
THE CONTENTS OF THIS DRAWING ARE THE EXCLUSIVE PROPERTY OF THE TECHNICAL MATERIEL CORP. ITS UNAUTHORIZED USE OR REPRODUCTION IN WHOLE OR IN PART IS STRICTLY FORBIDDEN.		

NOTES



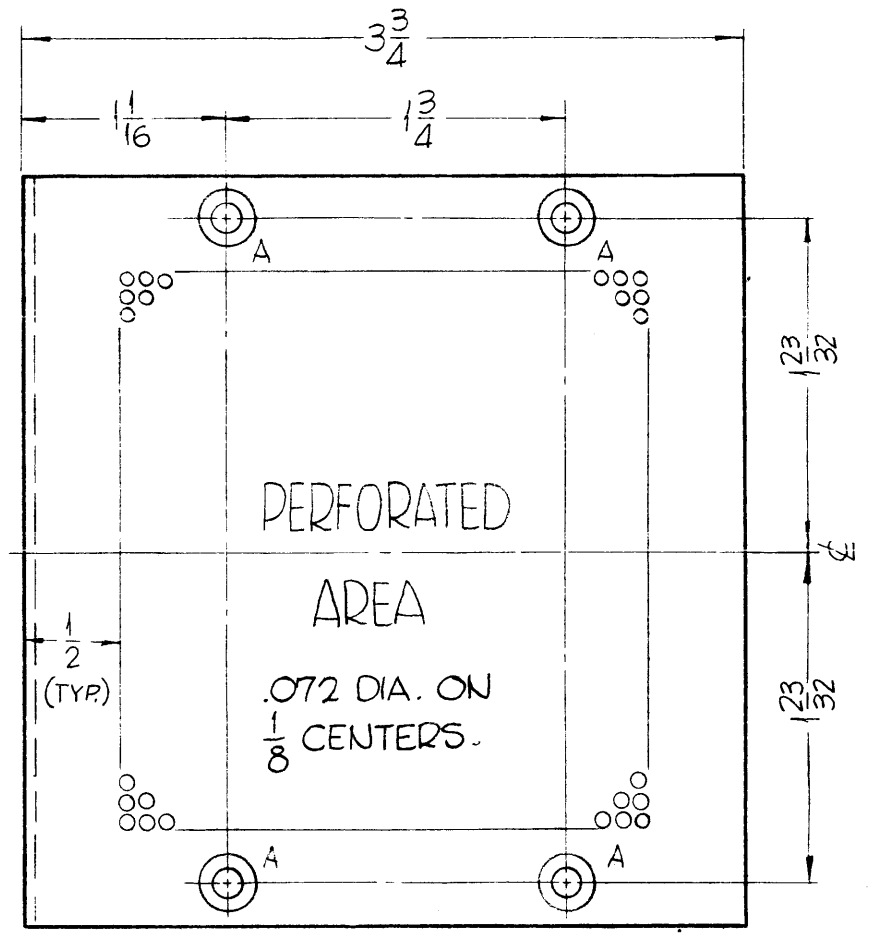
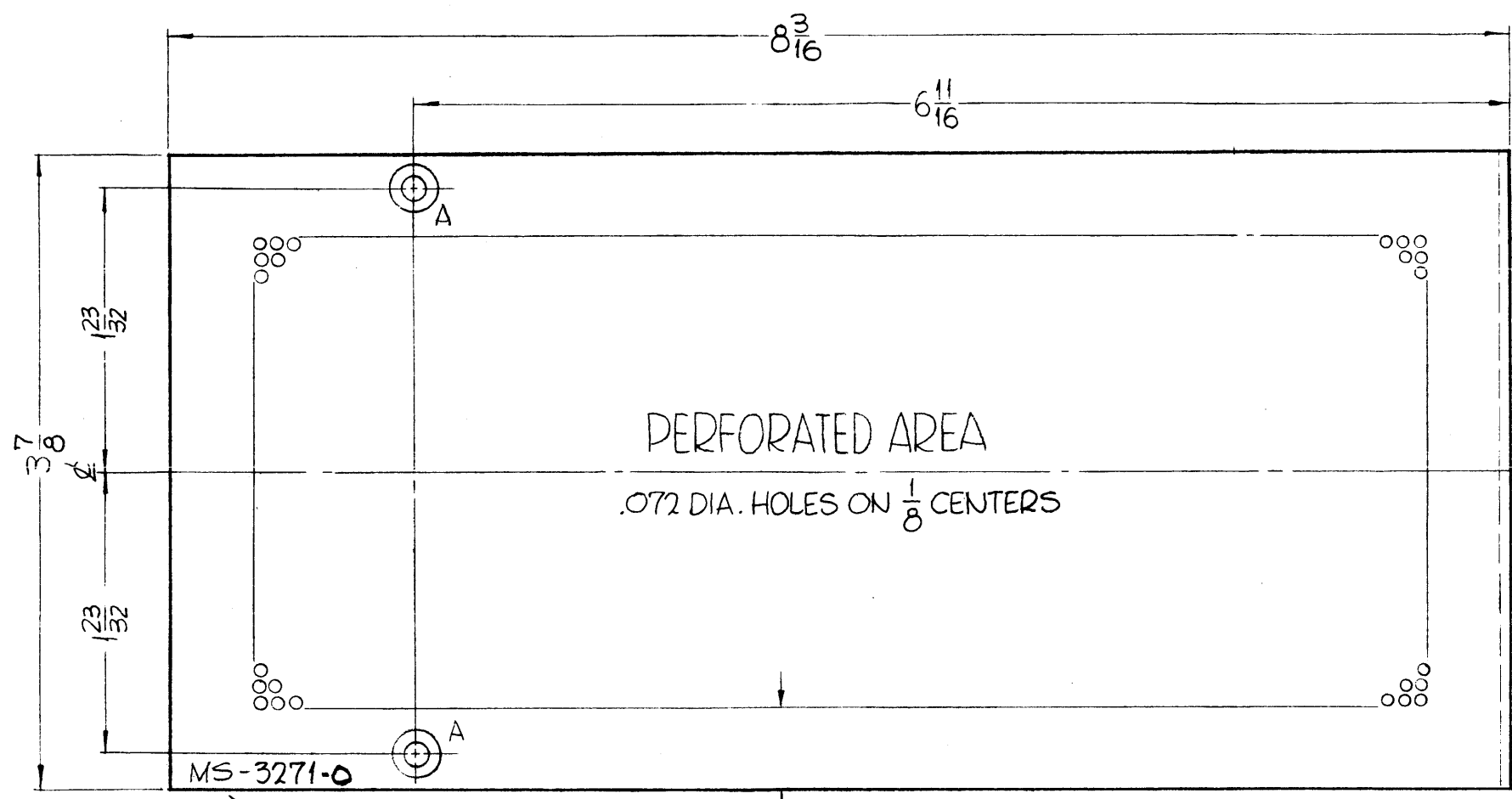


C'SINK FOR  
6-32 F.H.S.

A-DETAIL  
(6 REQ.)

MS-3271 A

REVISIONS					
SYM	DESCRIPTION	DATE	E.M.N. NO.	DRAFT	CHKD APPD
0	ORIGINAL RELEASE FOR PRODUCTION	2-28-64		A.M	
A	"FINISH & W.LATEST REV. LETTER" NOTES ADD.	7.13.64	11777	WB	<i>JCB</i>



METAL STAMP TMC PART NO.  
1/8 HIGH GOTHIC AS SHOWN,  
WITH LATEST REVISION  
LETTER.

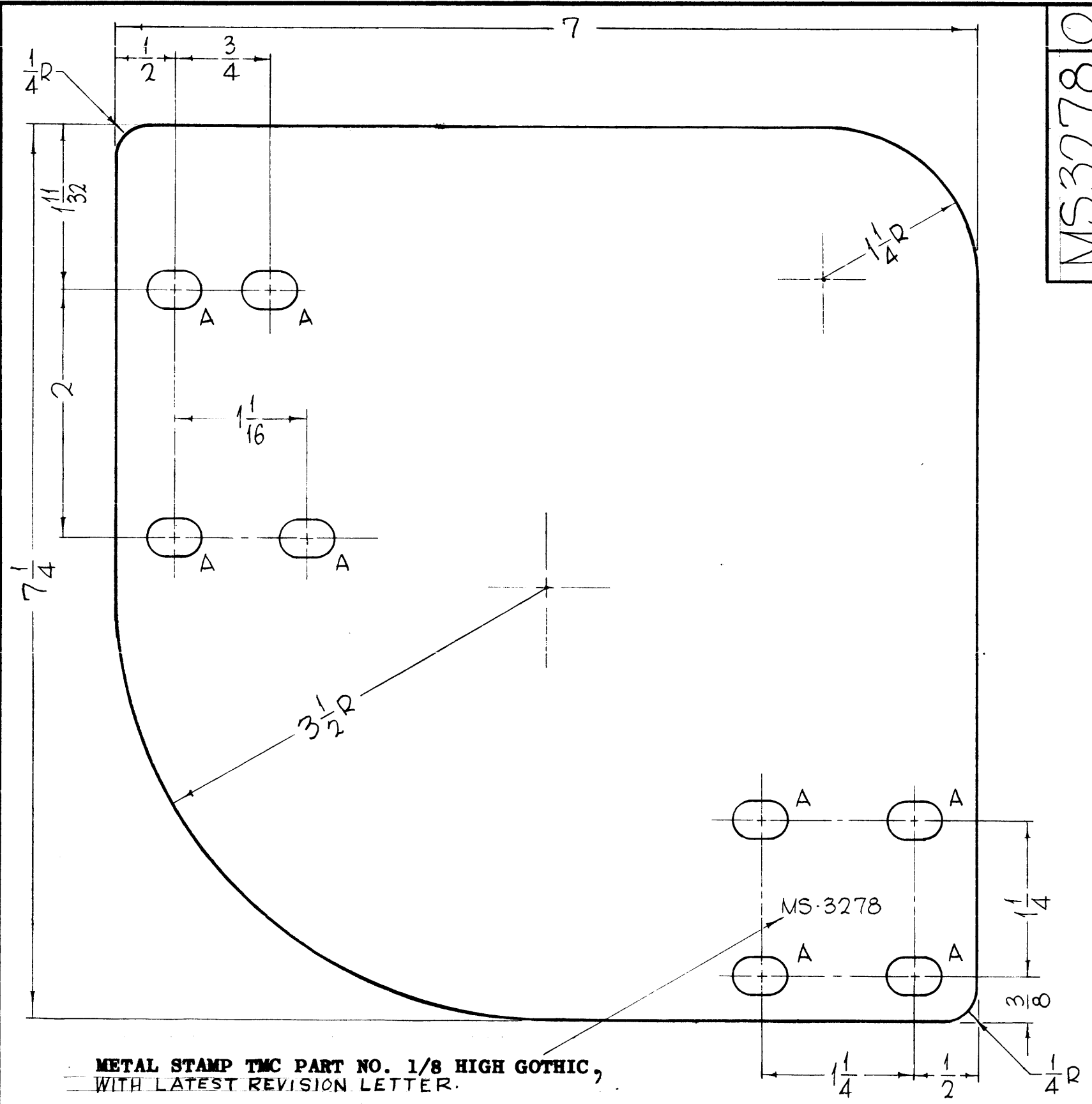
1/2 BOARDER (TYP.)

1	GPT-200K	AZ-101
Q'TY./UNIT	MODEL USED ON	ASS'Y. NO.
SCALE 1:1	CODE A	

THE CONTENTS OF THIS DRAWING ARE THE EXCLUSIVE PROPERTY OF THE TECHNICAL MATERIEL CORP. ITS UNAUTHORIZED USE OR REPRODUCTION IN WHOLE OR IN PART IS STRICTLY FORBIDDEN.

REQ'D.	ITEM	PART NUMBER	DESCRIPTION	SYMBOL	
F. BUDETTI LIST OF MATERIAL					
MATERIAL			THE TECHNICAL MATERIEL CORP. MAMARONECK, NEW YORK		
.064 THICK ALUMINUM			TITLE COVER, TOP		
FINISH			DRAWN SRG. DATE 2-18-63		
S404 YELLOW IRIDITE			CHECKED <i>JCB</i> DATE 2/11/64		
UNLESS OTHERWISE SPECIFIED DIMENSIONS ARE IN INCHES AND INCLUDE CHEMICALLY APPLIED OR PLATED FINISHES			MECH. DES. <i>JCB</i> DATE 2/11/64		
DECIMALS		FRACTIONS		FINAL APPROVAL <i>Rde</i> DATE	
.X ± .05		± 1/64		MS-3271	
.XX ± .01		AN LBS			A
.XXX ± .005		± 0° 30'			
TOLERANCES			SHEET		
			REV. LTR.		

NOTES



MS32780

REVISIONS					
SYM	DESCRIPTION	DATE	E.M.N. NO.	DRAFT	CHKD APPD
X1	1/16 DIM WAS 3/4, SLOTS WERE 5/16 X 7/16				
0	ORIGINAL RELEASE FOR PRODUCTION	5-28-64	0	A.M.	

HOLES REQ.  
A-5/16 X 1/2 SLOTS 8

REQ'D.	ITEM	PART NUMBER	DESCRIPTION	SYMBOL
	F. BUDETTI		LIST OF MATERIAL	
MATERIAL		1/16 THICK COPPER, HALF HARD		
FINISH		S245 SILVER PLATE		
TITLE		THE TECHNICAL MATERIEL CORP. MAMARONECK, NEW YORK		
TITLE		PLATE, ELECTRICAL JUMPER		
DRAWN		DATE	FINAL APPROVAL	
John C Biele		4-14-64	RAC	
CHECKED		DATE		
OJB		5/18/64	MS3278	
ELECT. DES.		DATE	0	
MECH. DES.		DATE	REV. LTR.	
		5/1/64	SHEET	

METAL STAMP TMC PART NO. 1/8 HIGH GOTHIC, WITH LATEST REVISION LETTER.

RADIUS ALL EDGES 1/32 R.  
POLISH EDGES ONLY BEFORE PLATING

NOTES

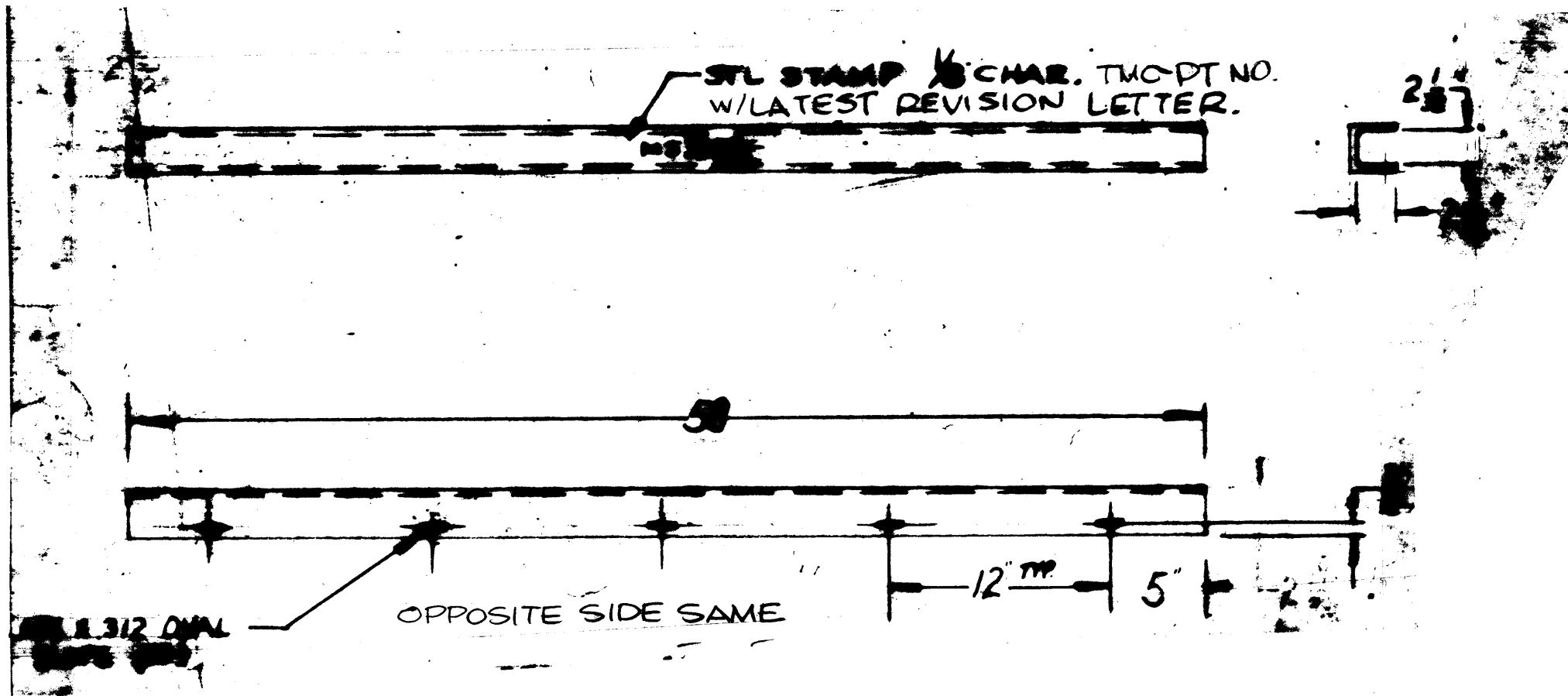
2	GPT-200K	AX-395
QTY./UNIT	MODEL USED ON	ASS'Y. NO.
SCALE #	CODE A	
THE CONTENTS OF THIS DRAWING ARE THE EXCLUSIVE PROPERTY OF THE TECHNICAL MATERIEL CORP. ITS UNAUTHORIZED USE OR REPRODUCTION IN WHOLE OR IN PART IS STRICTLY FORBIDDEN.		

DECIMALS	FRACTIONS
.X ± .05	± 1/64
.XX ± .01	ANGLES ± 0° 30'
.XXX ± .005	

MS3283

REVISIONS

SYM	DESCRIPTION	DATE	E.M.N. NO.	DRAFT	CHKD	APPD
Ø	ORIGINAL RELEASE FOR PRODUCTION	12/17/65	Ø	JK		



TOLERANCE TO BE  
NON-ACCUMULATIVE

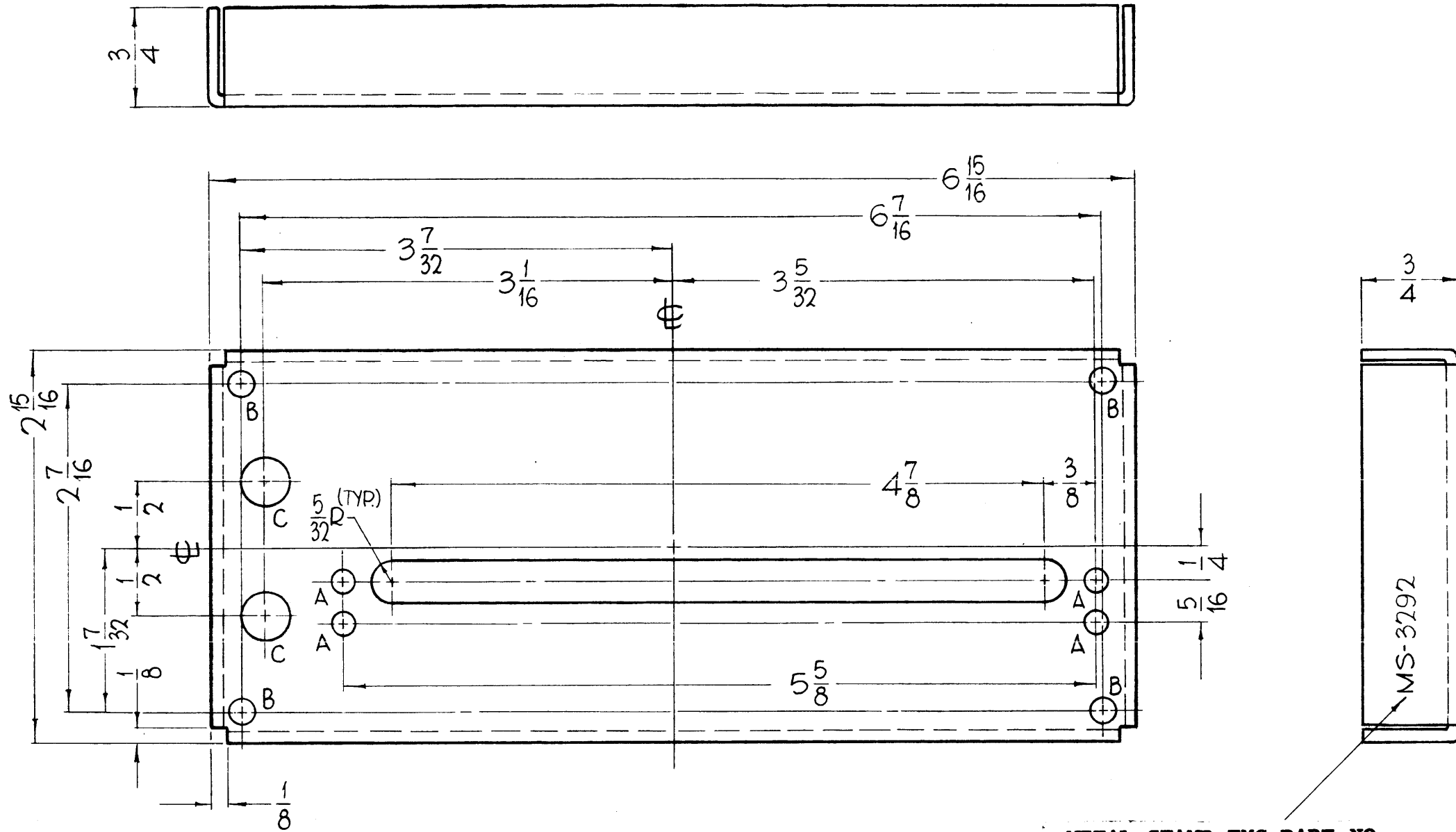
NOTES

1	TER-100K	
Q'TY./UNIT	MODEL USED ON	ASS'Y. NO.
SCALE DO NOT SCALE	CODE S401 189	

THE CONTENTS OF THIS DRAWING ARE THE EXCLUSIVE PROPERTY OF THE TECHNICAL MATERIEL CORP. ITS UNAUTHORIZED USE OR REPRODUCTION IN WHOLE OR IN PART IS STRICTLY FORBIDDEN.

REQ'D.	ITEM	PART NUMBER	DESCRIPTION	SYMBOL
	BUDETTI		LIST OF MATERIAL	
MATERIAL	.031 ALUM 5052-H32		THE TECHNICAL MATERIEL CORP. MAMARONECK, NEW YORK	
FINISH	S404 IRIDITE		TITLE CABLE SHIELD	
UNLESS OTHERWISE SPECIFIED DIMENSIONS ARE IN INCHES AND INCLUDE CHEMICALLY APPLIED OR PLATED FINISHES			DRAWN E. ANZA	DATE 9-13-65
			CHECKED JK	DATE 10/6/65
			ELECT. DES.	DATE
			MECH. DES. JK	DATE 11/65
			FINAL APPROVAL JK MS3283	
			SHEET	
			REV. LTR. Ø	

MS-3292 0



HOLES	REQ.
A - 11/64 DIA.	4
B - 13/64 DIA.	2
C - 3/8 DIA.	2

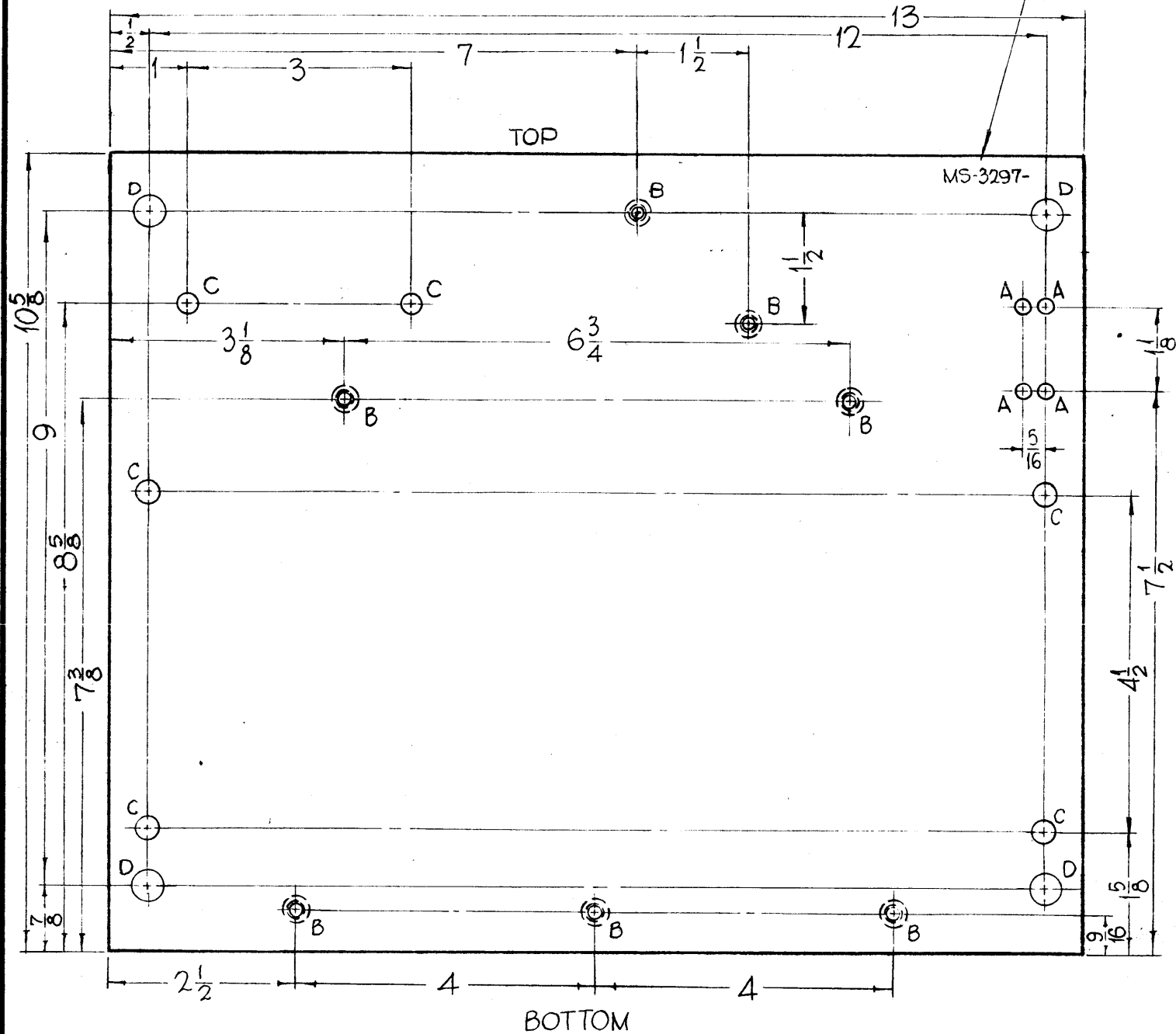
REF-TMC DWG. NO. LD-1266

METAL STAMP TMC PART NO.  
1/8 HIGH GOTHIC.  
WITH LATEST REVISION LETTER

- UNLESS OTHERWISE SPECIFIED:
1. USE MATERIAL THICKNESS FOR MAXIMUM RADIUS ON ALL BENDS.
  2. ALL ANGULAR BENDS 90°.
  3. REMOVE ALL BURRS AND SHARP EDGES.

REQ. ITEM PART NO. F. BUDETTI DESCRIPTION SYMBOL .081 THICK STOCK SIZE THE TECHNICAL MATERIEL CORP. MAMARONECK, NEW YORK ALUMINUM MATERIAL CHASSIS, COMPONENT MTG.	
5052 H-32 John C. Biele AA RE TYPE & TEMPER HEAT TREAT. SPEC. DRAWN CHECKER FINAL APPROVAL S404-IRIDITE, 14-2 AL-COAT MS-3292 0 FINISH & SPEC. NO. ELEC. DES. APP. MECH. DES. APP.	
SYM 0 ORIGINAL RELEASE FOR PRODUCTION DATE 5/28/64 CH. NO. 0 DRAFTS A.M. CHECKER ENG. APP.	SCALE: MAXIMUM ALLOWABLE TOLERANCES HAVE BEEN DETERMINED AND ANY DEVIATIONS WILL BE CAUSE FOR REJECTION. REMOVE ALL BURRS AND SHARP EDGES
UNLESS OTHERWISE SPECIFIED: DIMENSIONS ARE IN INCHES TOLERANCES ON FRACTIONS ± 1/64 DECIMALS ± .005 ANGLES ± 1/2°	T GPT-200K AX-392 6-27-63 REQ. PER UNIT MODEL SECTION ASS'Y. NO. DATE USED ON

METAL STAMP TMC PART NO.  
1/8 HIGH GOTHIC, WITH  
LATEST REVISION LETTER.



MS-3297

REVISIONS

SYM	DESCRIPTION	DATE	E.M.N. NO.	DRAFT	CHKD	APPD
X3	5/8" TAKEN OFF BOTTOM & 1/4" OFF TOP OF PLATE. ALL DIMENSIONS CHANGED ACCORDINGLY	12/10/63				
X4	DIM. 10 5/8 WAS 11 1/8, TOP "B" HOLES DROPPED 1"	7-4-64				
O	ORIGINAL RELEASE FOR PRODUCTION	2/6/64				
A	2" "E" HOLES CHG. TO "D", ON HOLE LEGEND "E" DELE.	7.13.64	11780	AMB	JCS	

- HOLES
- A- 1/8 DIA. \_\_\_\_\_ 4 REQ.
  - B- .221, .224 DIA. \_\_\_\_\_ 7 REQ.
  - C- 15/64 DIA. \_\_\_\_\_ 6 REQ.
  - D- 3/8 DIA. \_\_\_\_\_ 4 REQ.

REF: LD-1268

REQ'D.	ITEM	PART NUMBER	DESCRIPTION	SYMBOL
7	1	NT-129-832-6	NUT ROUND, SWAGE TYPE	

F. BUDETTI LIST OF MATERIAL

MATERIAL: 1/8 THICK, ALUMINUM, 5052-H-32

FINISH: S404 IRIDITE 14-2 AL COAT

TITLE: PLATE, TRANSFORMER MOUNTING

THE TECHNICAL MATERIEL CORP. MAMARONECK, NEW YORK

Q'TY./UNIT	MODEL USED ON	ASS'Y. NO.	DRAWN	DATE	FINAL APPROVAL	DATE
1	GPT-200K (AX-392)	A-3159	John C. Biele	5-17-63		4-7-64
SCALE	CODE		CHECKED	DATE		
#	A		AA JCS	2/6/64		

UNLESS OTHERWISE SPECIFIED DIMENSIONS ARE IN INCHES AND INCLUDE CHEMICALLY APPLIED OR PLATED FINISHES

DECIMALS	FRACTIONS
.X ± .05	± 1/64
.XX ± .01	ANGLES
.XXX ± .005	± 0° 30'

TOLERANCES

ENGR. DES.	DATE	SHEET	REV. LTR.
JCS JB	3/16/64	MS-3297	A
CHKD	DATE		
AMB	2/6/64		

UNLESS OTHERWISE SPECIFIED:  
REMOVE ALL BURRS AND SHARP EDGES.  
MOUNT INSERTS AFTER FINISHING.

NOTES

THE CONTENTS OF THIS DRAWING ARE THE EXCLUSIVE PROPERTY OF THE TECHNICAL MATERIEL CORP. ITS UNAUTHORIZED USE OR REPRODUCTION IN WHOLE OR IN PART IS STRICTLY FORBIDDEN.