

7

6

5

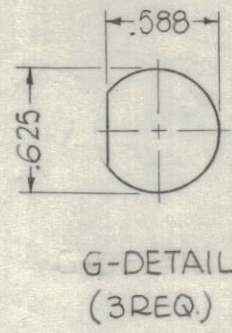
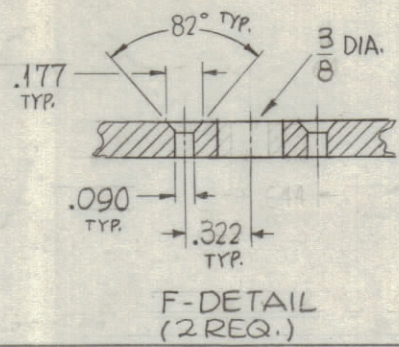
4

3

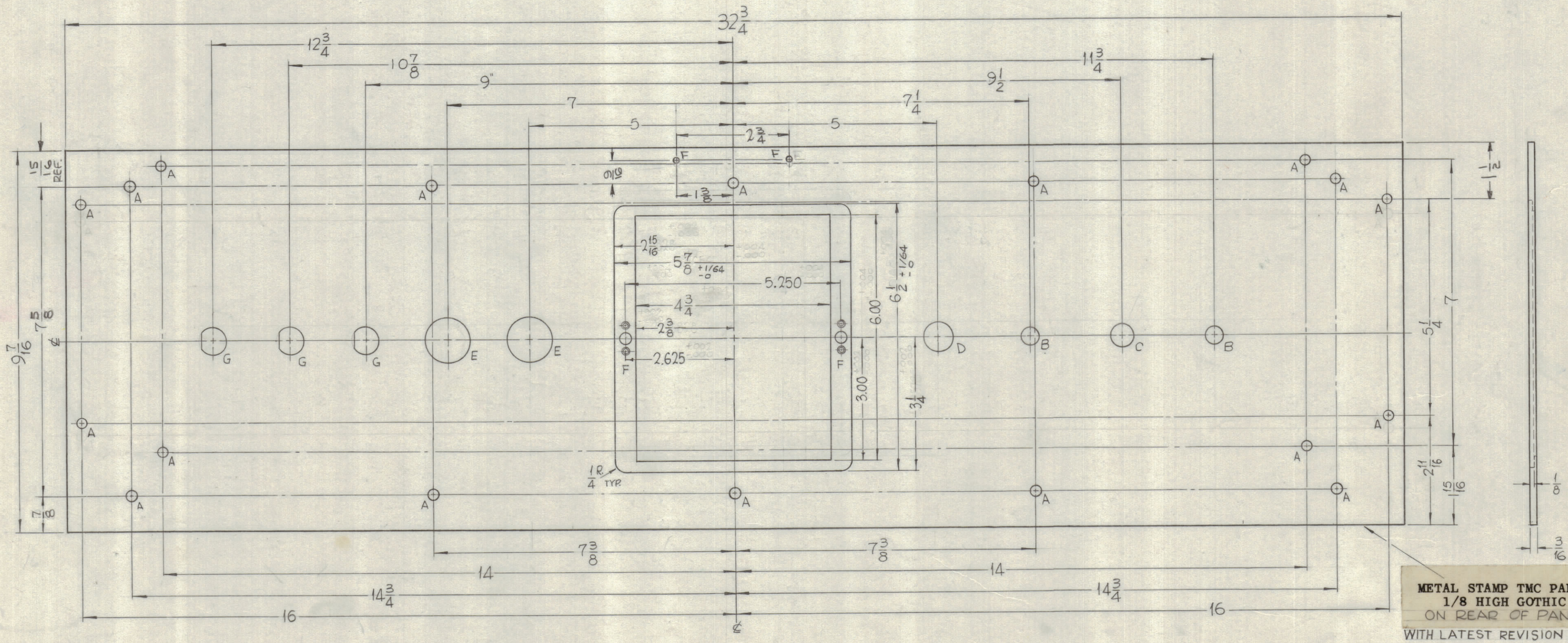
2

1

- HOLES:
- A ~ 15/64 DIA. — 18 REQ.
 - B ~ 13/32 DIA. — 2 REQ.
 - C ~ 17/32 DIA. — 1 REQ.
 - D ~ 11/16 DIA. — 1 REQ.
 - E ~ 1-1/16 DIA. — 2 REQ.
 - F ~ .078 DIA. — 2 REQ.



REVISIONS					
ZONE	SYM	DESCRIPTION	DATE	E.M.N. NO.	APPD
	O	ORIGINAL RELEASE FOR PRODUCTION	5/27/64	0	A.M.
D7,E7	A	DIM 13/16 WAS 15/16, DIM 7 1/16 WAS 7 9/16	7.8.64	11756	JJB
DEPT, E1	B	DIMS 7 5/8 WAS 7 1/16; 7/8 WAS 13/16; 15/16 ADDED 1 1/2 ADDED; (18) "A" HOLES WERE 7/32 DIA.	3-22-65	13642	JJB



MS-3192
B

METAL STAMP TMC PART NO. 1/8 HIGH GOTHIC. ON REAR OF PANEL WITH LATEST REVISION LETTER

REF: LD-1218 SHEET 1 (ENGRAVING)
LD-1218 SHEET 2 (LETTERING)
PX-

- MACHINING:
- MILL ALL EDGES.
 - HOLES MUST BE DRILLED, UNLESS OTHERWISE SPECIFIED.
 - LATERAL BOW OF PANEL MUST BE KEPT TO .031 TOLERANCE.
 - PANEL MUST BE FREE OF ALL MACHINING MARKS, GOUGES AND SCRATCHES. IF NECESSARY, SAND FRONT OF PANEL WITH NO. 120 GRIT SANDPAPER.
- FINISH NOTES:
- S404 - IRIDITE 14-2 AL-COAT.
 - S114 - ZINC CHROMATE PRIMER) FRONT AND
 - S115 - SMOOTH GRAY ENAMEL) EDGES ONLY

NOTES

1	GPT-200K	AX-397
Q'TY./UNIT	MODEL USED ON	ASS'Y. NO.
SCALE 1/2	CODE A	
THE CONTENTS OF THIS DRAWING ARE THE EXCLUSIVE PROPERTY OF THE TECHNICAL MATERIEL CORP. ITS UNAUTHORIZED USE OR REPRODUCTION IN WHOLE OR IN PART IS STRICTLY FORBIDDEN.		

REQ'D.	ITEM	PART NUMBER	DESCRIPTION	SYMBOL
F. BUDETTI LIST OF MATERIAL				
MATERIAL		3/16 ALUMINUM 2024-T3		
FINISH		SEE NOTE		
TITLE		PANEL FRONT, P.S. "A"		
UNLESS OTHERWISE SPECIFIED DIMENSIONS ARE IN INCHES AND INCLUDE CHEMICALLY APPLIED OR PLATED FINISHES	DRAWN SRG	DATE 7-9-63	FINAL APPROVAL RJC	DATE
DECIMALS .X ± .05 .XX ± .01 .XXX ± .005	TOLERANCES	ELECT. DES. 208	MECH. DES. JR	DATE
		MS-3192		B
		SHEET		REV. LTR.