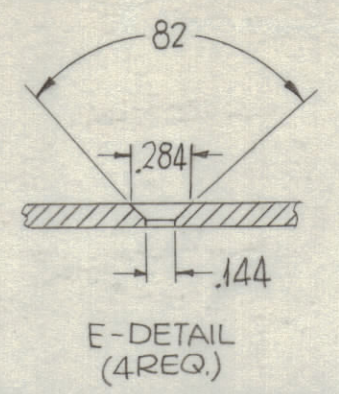
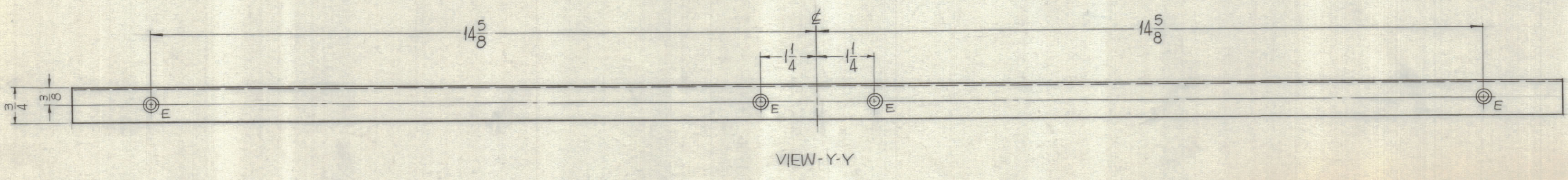
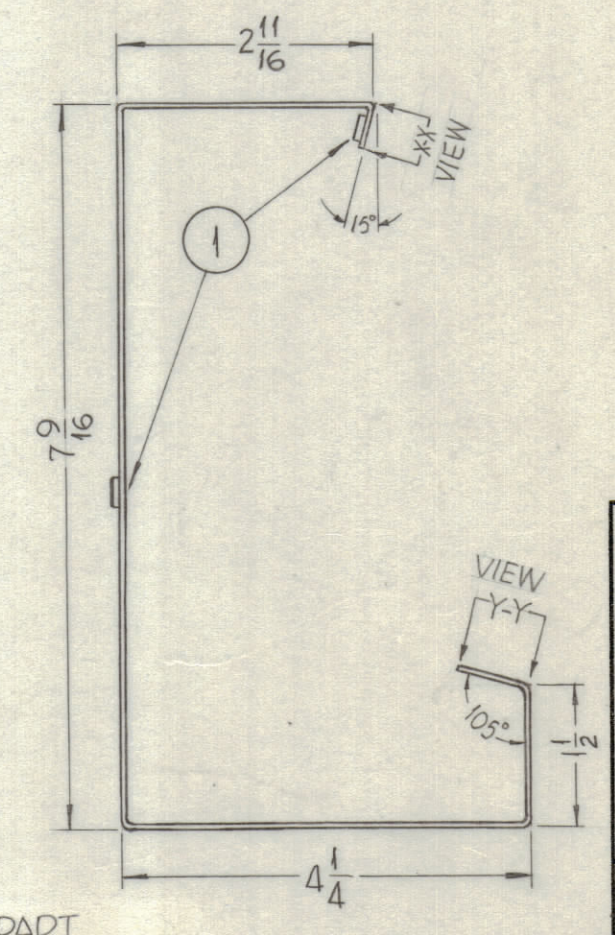
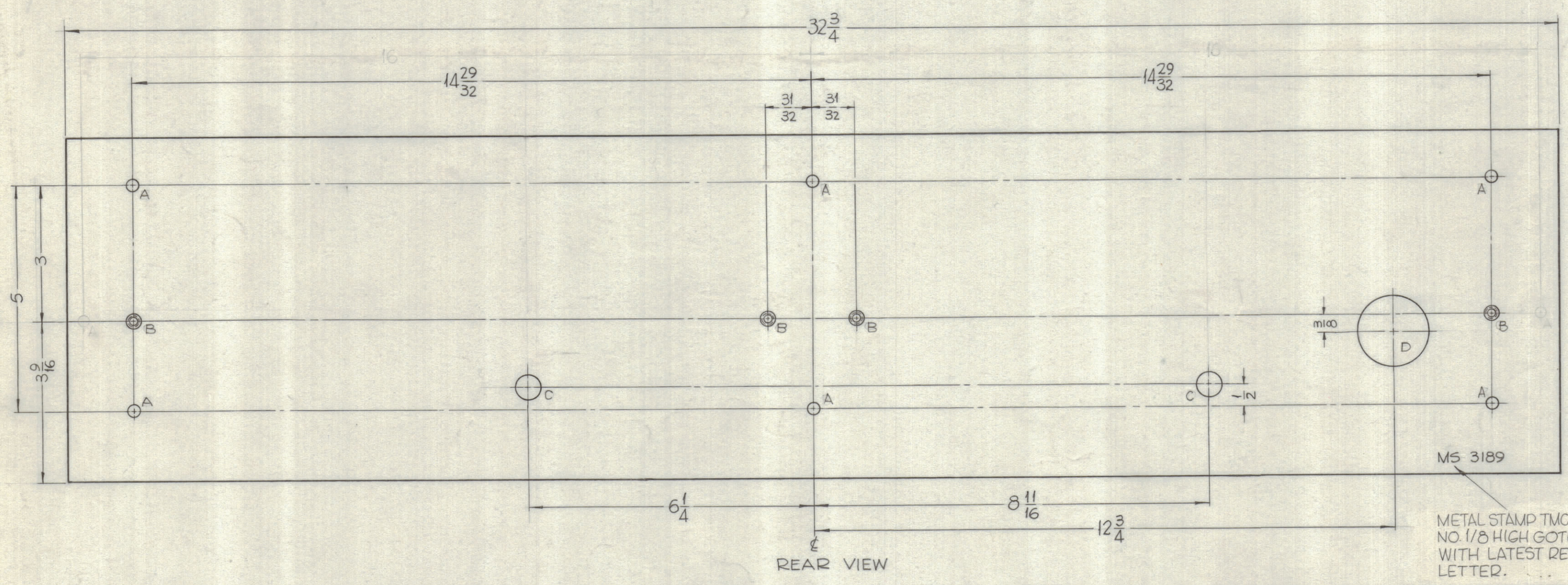
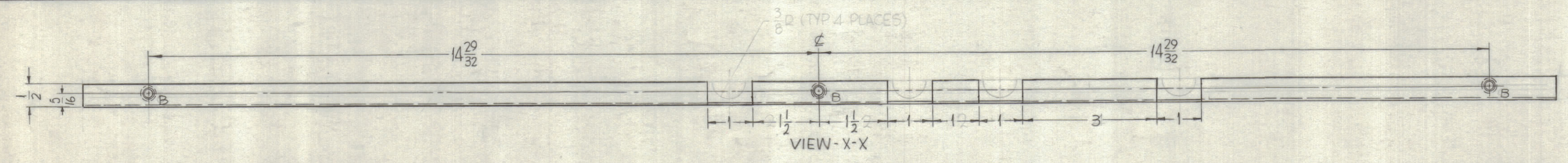


HOLES:  
 A ~ 7/32 DIA. — 2 REQ.  
 B ~ 15/64 DIA. — 6 REQ.  
 C ~ 221-224 DIA. — 7 REQ.  
 D ~ 1/2 DIA. — 2 REQ.  
 E ~ 1-1/2 DIA. — 1 REQ.



REVISIONS					
ZONE	SYM	DESCRIPTION	DATE	E.M.N. NO.	DRAFT
	X2	④ NOTCHES ADDED TO TOP LIP	10-11-63		
	O	ORIGINAL RELEASE FOR PROD	5/11/64		



UNLESS OTHERWISE SPECIFIED:  
 1. USE MATERIAL THICKNESS FOR MAXIMUM RADIUS ON ALL BENDS.  
 2. ALL ANGULAR BENDS 90°.  
 3. REMOVE ALL BURRS AND SHARP EDGES.  
 4. MOUNT INSERTS AFTER FINISHING.

FINISH NOTES:  
 1. S404 - IRIDITE 14-2 AL-COAT.  
 2. S114 - ZINC CHROMATE PRIMER } EXCEPT REAR.  
 3. S115 - SMOOTH GRAY ENAMEL }

NOTES

THE CONTENTS OF THIS DRAWING ARE THE EXCLUSIVE PROPERTY OF THE TECHNICAL MATERIEL CORP. ITS UNAUTHORIZED USE OR REPRODUCTION IN WHOLE OR IN PART IS STRICTLY FORBIDDEN.

REQ'D.	7	1	NT-129-832-4	NUT, ROUND, SWAGE TYPE	
ITEM					
PART NUMBER					
DESCRIPTION					
SYMBOL					
F. BUDETTI LIST OF MATERIAL					
MATERIAL	.064 ALUMINUM 5052-H 32		THE TECHNICAL MATERIEL CORP. MAMARONECK, NEW YORK		
FINISH	SEE NOTE		TITLE METER BOX, POWER SUPPLY "A"		
DRAWN	SRG	DATE 7-16-63	FINAL APPROVAL		DATE
CHECKED	OR	DATE	KAL		
ELECT. DES.	OR	DATE 7/19/63	MS 3189		
MECH. DES.	OR	DATE 7/19/63			
DECIMALS	TOLERANCES		FRACTIONS		REV. LTR.
.X ± .05	± 1/64		± 1/64		
.XX ± .01	± 1/32		± 1/32		
.XXX ± .005	± 1/128		± 1/128		
	± 0° 30'				