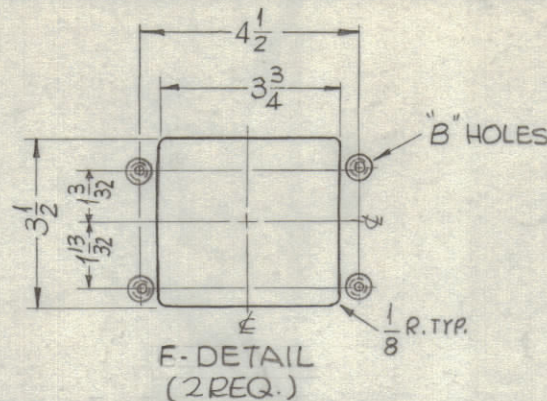
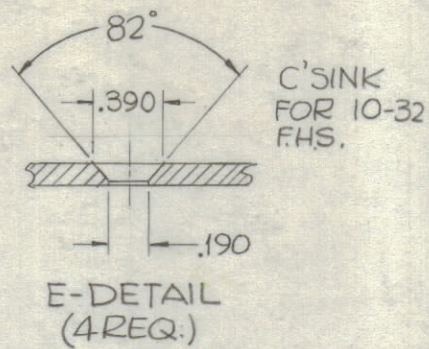
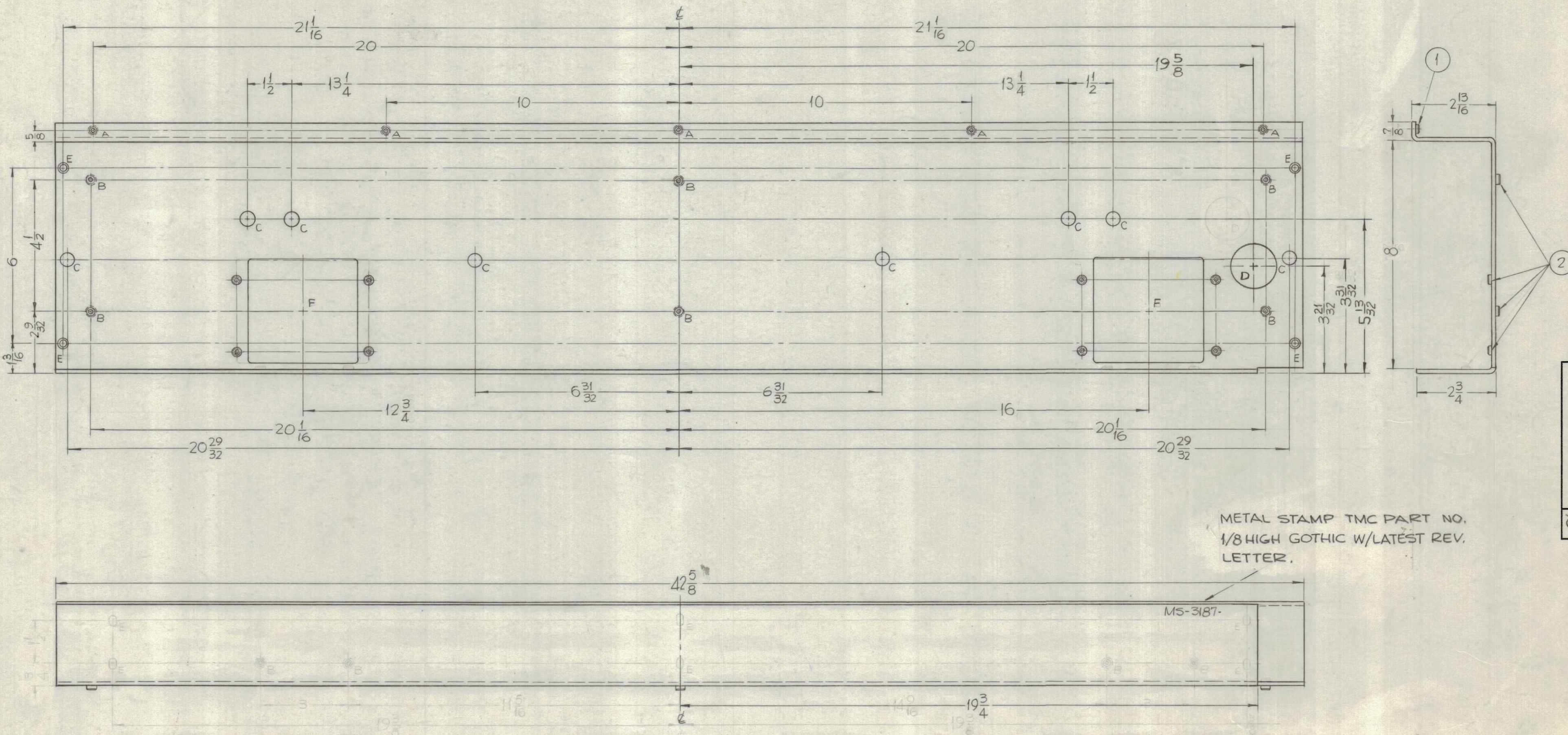


HOLES:
 A ~ .221-.224 DIA. — 5 REQ.
 B ~ .250-.253 DIA. — 14 REQ.
 C ~ 1/2 DIA. — 8 REQ.
 D ~ 1-1/2 DIA. — 1 REQ.



REVISIONS					
ZONE	SYM	DESCRIPTION	DATE	E.M.N. NO.	APPD
	X3	7/8 LIP WAS 5/8, 5/8 DIM TO 'A' HOLES WERE 3/8 (ON 7/8 LIP)	2-6-64		
	Q	ORIGINAL RELEASE FOR PRODUCTION	5-18-64		SRS



METAL STAMP TMC PART NO.
 1/8 HIGH GOTHIC W/LATEST REV.
 LETTER.

- UNLESS OTHERWISE SPECIFIED:
1. USE MATERIAL THICKNESS FOR MAXIMUM RADIUS ON ALL BENDS.
 2. ALL ANGULAR BENDS 90°.
 3. REMOVE ALL BURRS AND SHARP EDGES.
 4. MOUNT INSERTS AFTER FINISHING.

REQ'D.	ITEM	PART NUMBER	DESCRIPTION	SYMBOL
14	2	NT-129-1032-6	NUT ROUND, SWAGE TYPE.	
5	1	NT-129-832-6	NUT ROUND, SWAGE TYPE.	

F. BUDETTI LIST OF MATERIAL

MATERIAL	1/8 THICK ALUMINUM	THE TECHNICAL MATERIEL CORP. MAMARONECK, NEW YORK	
FINISH	S404 YELLOW IRIDITE	TITLE SHIELD, METER BOX MTG.	

Q'TY./UNIT	1	MODEL USED ON	GPT-200K	AX-395
SCALE	3/8=1"	CODE		

UNLESS OTHERWISE SPECIFIED DIMENSIONS ARE IN INCHES AND INCLUDE CHEMICALLY APPLIED OR PLATED FINISHES

DECIMALS	.X ± .05	FRACTIONS	± 1/64
	.XX ± .01	ANGLES	± 0° 30'
	.XXX ± .005	TOLERANCES	

DRAWN	SRG	DATE	7-8-63	FINAL APPROVAL		DATE	
CHECKED	all	DATE					
ELECT. DES.	DB	DATE	3/18/64				
MECH. DES.	pel	DATE	1/1/64				

MS-3187

NOTES

THE CONTENTS OF THIS DRAWING ARE THE EXCLUSIVE PROPERTY OF THE TECHNICAL MATERIEL CORP. ITS UNAUTHORIZED USE OR REPRODUCTION IN WHOLE OR IN PART IS STRICTLY FORBIDDEN.

MS-3187