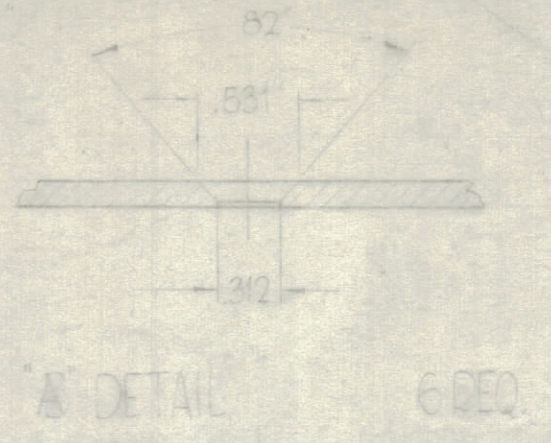
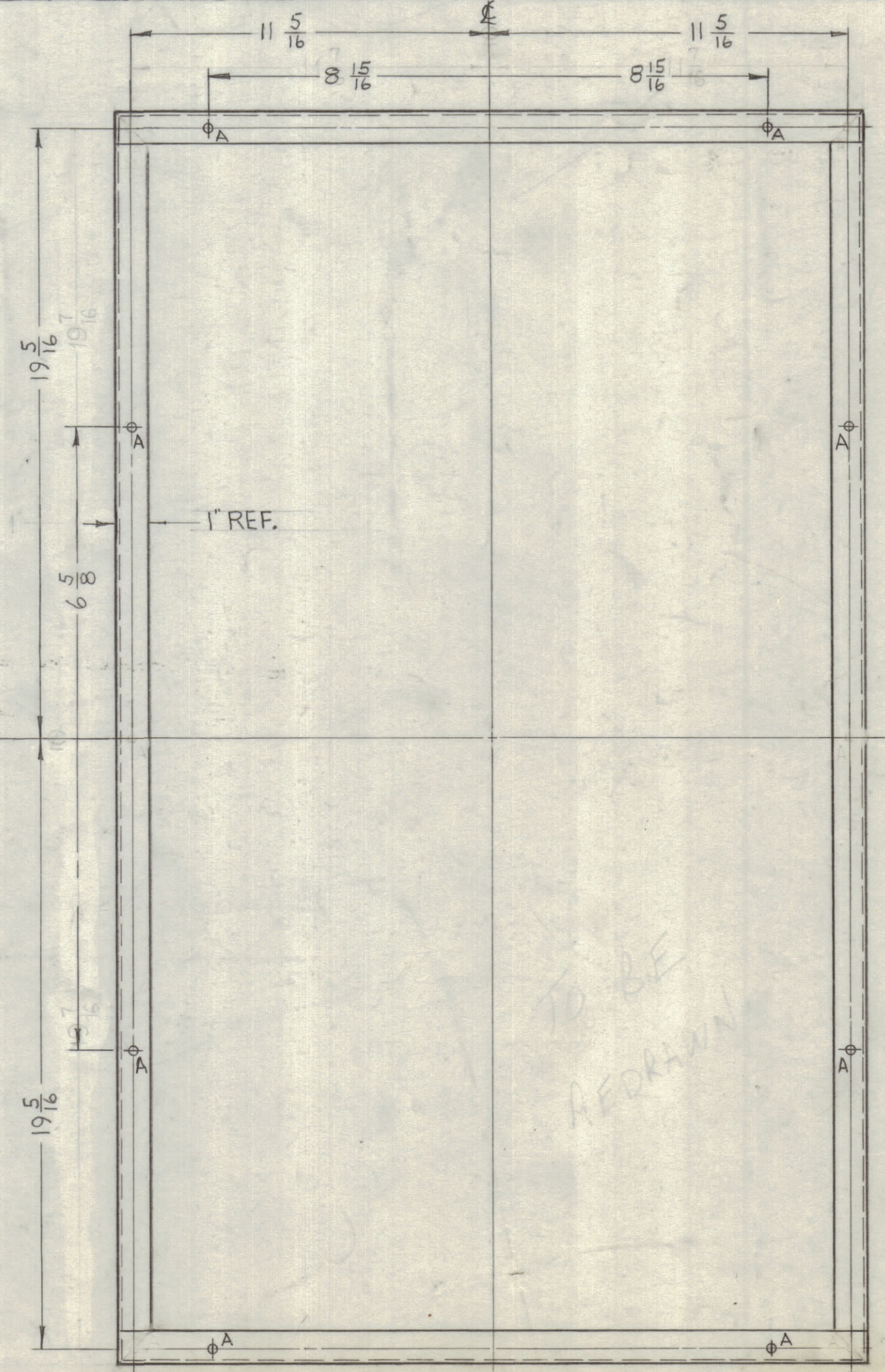
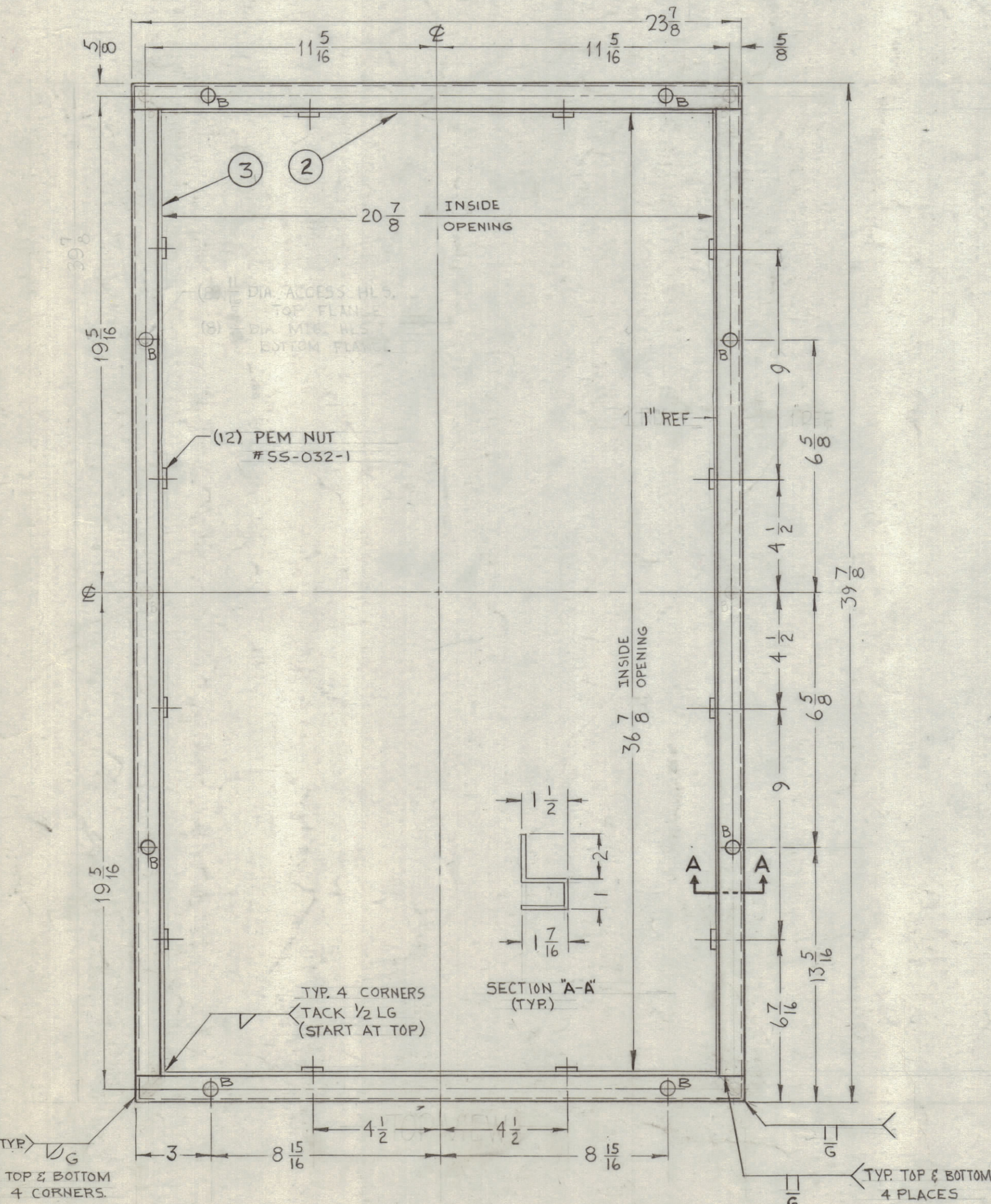


HOLES —
 A-5/16 DIA. — 8 REQ.
 B-11/16 DIA. — 8 REQ.



REVISIONS					
ZONE	SYM	DESCRIPTION	DATE	E.M.N. NO.	APPD.
Ø		ORIGINAL RELEASE	7/15/69	Ø	JAC



FINISHING NOTES —
 S-371 - STEEL DEGREASING.
 S-114 - ZINC CHROMATE PRIMER
 S-220 - SMOOTH, BLUE GRAY ENAMEL, OR PRIME AND PAINT TO CUSTOMERS SPECIFICATIONS.

NOTES

THE CONTENTS OF THIS DRAWING ARE THE EXCLUSIVE PROPERTY OF THE TECHNICAL MATERIEL CORP. ITS UNAUTHORIZED USE OR REPRODUCTION IN WHOLE OR IN PART IS STRICTLY FORBIDDEN.

REQ'D.	ITEM	PART NUMBER	DESCRIPTION	SYMBOL
F. BUDETTI LIST OF MATERIAL				
MATERIAL		1" SQUARE STEEL TUBING, 12 GA., HOT ROLLED		
FINISH		SEE NOTES		
THE TECHNICAL MATERIEL CORP.		MAMARONECK, NEW YORK		
TITLE		FRAME, TOP, EXHAUST MTG.		
DRAWN	John C. Biele	DATE	2-20-63	FINAL APPROVAL
CHECKED	JAC	DATE	7/17/69	Ø
ELECT. DES.	HVC	DATE	7/15/69	MS-3186
MECH. DES.		DATE		Ø
SHEET				REV. LTR.

MS-3186

TO BE REDRAWN

— BOTTOM VIEW —