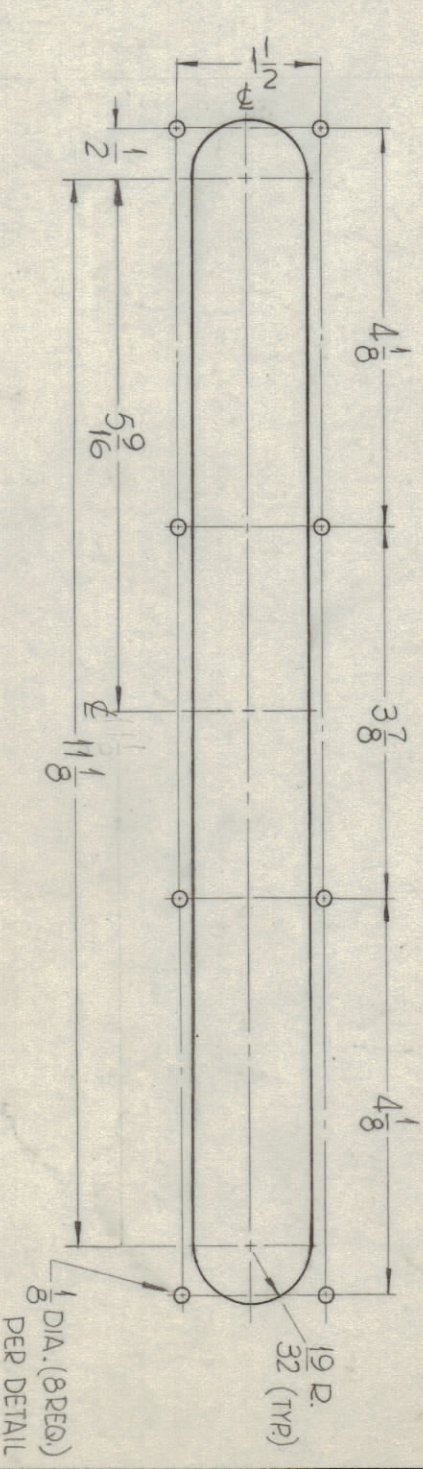
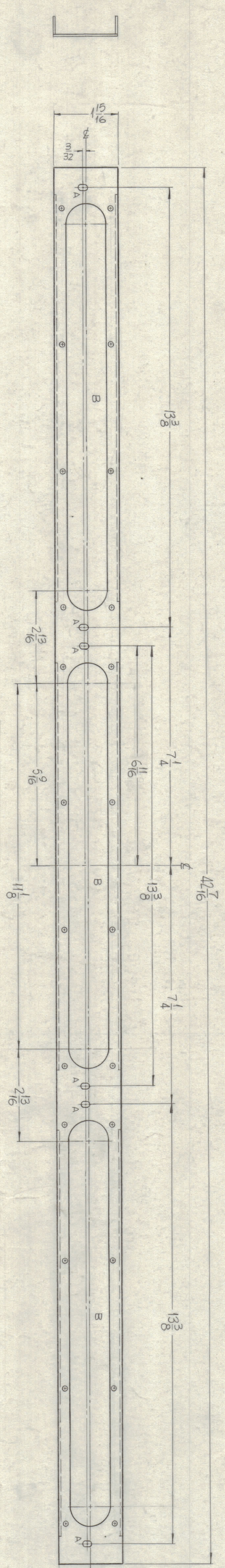
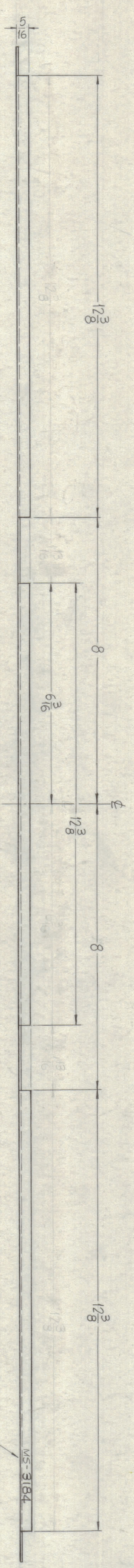


ZONE	SYN	DESCRIPTION	REVISIONS	DATE	DATE	DATE	DATE	DATE
		ORIGINAL RELEASE FOR PRODUCTION		5/11/4				

11 10 9 8 7 6 5 4 3 2 1



A-DETAIL
(6 REQ)

B-DETAIL
(3 REQ)

NOTE:

USE MATERIAL THICKNESS FOR
MAXIMUM RADIUS ON ALL BENDS.

FINISH NOTE:

1~ S404 IDIDITE
2~ S114 ZINC CHROMATE PRIM.
3~ S115 TMC GRAY } FRONT ONLY

NOTES

1	SCALE	1" = 1/8"
2	SET POINT	40°
3	SCALE	1" = 1/8"
4	SCALE	1" = 1/8"
5	SCALE	1" = 1/8"
6	SCALE	1" = 1/8"
7	SCALE	1" = 1/8"
8	SCALE	1" = 1/8"
9	SCALE	1" = 1/8"
10	SCALE	1" = 1/8"
11	SCALE	1" = 1/8"

NO.	ITEM	PART NUMBER	DESCRIPTION	SYMBOL
1	F. BUDDETT			
2	MATERIAL	3052-H32	THE TECHNICAL MATERIEL CORP.	
3	FINISH	SEE NOTE	MAMARONECK, NEW YORK	
4	UNLESS OTHERWISE SPECIFIED		FRAME, WINDOW	
5	DIMENSIONS ARE IN INCHES AND INCLUDE			
6	FRONT AND BACK UNLESS OTHERWISE SPECIFIED			
7	TOLERANCES			
8	±.005			
9	±.01			
10	±.015			
11	±.02			
12	±.03			
13	±.04			
14	±.05			
15	±.06			
16	±.07			
17	±.08			
18	±.09			
19	±.10			
20	±.12			
21	±.15			
22	±.20			
23	±.25			
24	±.30			
25	±.35			
26	±.40			
27	±.45			
28	±.50			
29	±.60			
30	±.70			
31	±.80			
32	±.90			
33	±1.00			
34	±1.25			
35	±1.50			
36	±1.75			
37	±2.00			
38	±2.50			
39	±3.00			
40	±3.50			
41	±4.00			
42	±4.50			
43	±5.00			
44	±5.50			
45	±6.00			
46	±6.50			
47	±7.00			
48	±7.50			
49	±8.00			
50	±8.50			
51	±9.00			
52	±9.50			
53	±10.00			
54	±10.50			
55	±11.00			
56	±11.50			
57	±12.00			
58	±12.50			
59	±13.00			
60	±13.50			
61	±14.00			
62	±14.50			
63	±15.00			
64	±15.50			
65	±16.00			
66	±16.50			
67	±17.00			
68	±17.50			
69	±18.00			
70	±18.50			
71	±19.00			
72	±19.50			
73	±20.00			
74	±20.50			
75	±21.00			
76	±21.50			
77	±22.00			
78	±22.50			
79	±23.00			
80	±23.50			
81	±24.00			
82	±24.50			
83	±25.00			
84	±25.50			
85	±26.00			
86	±26.50			
87	±27.00			
88	±27.50			
89	±28.00			
90	±28.50			
91	±29.00			
92	±29.50			
93	±30.00			
94	±30.50			
95	±31.00			
96	±31.50			
97	±32.00			
98	±32.50			
99	±33.00			
100	±33.50			

MS-3184

TMC FORM 111