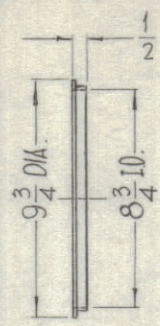


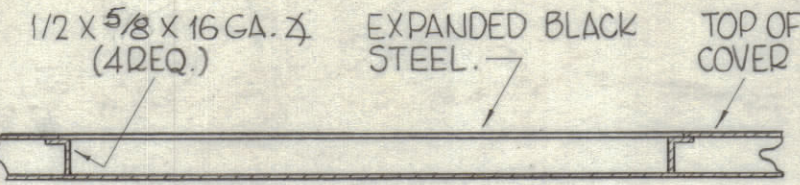
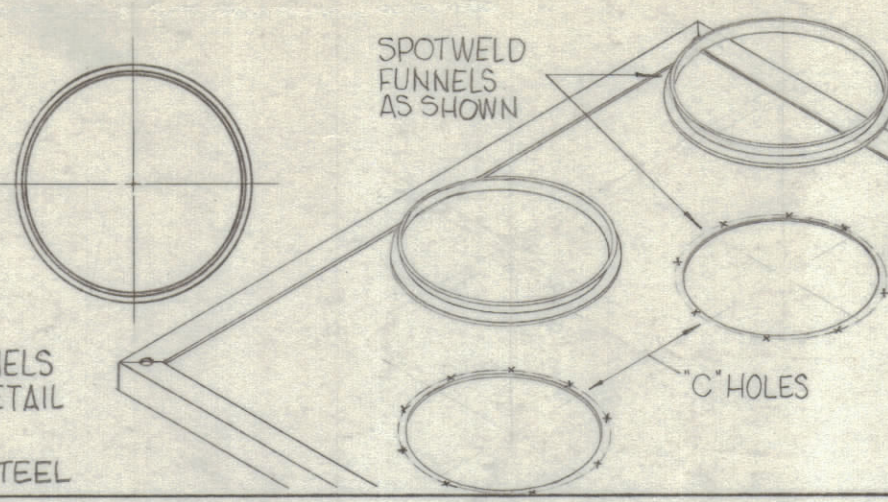
HOLES

- A - 5/16 DIA.
- B - 11/16 DIA.
- C - 8-7/8 DIA.

- 6 REQ.
- 6 REQ.
- 2 REQ.

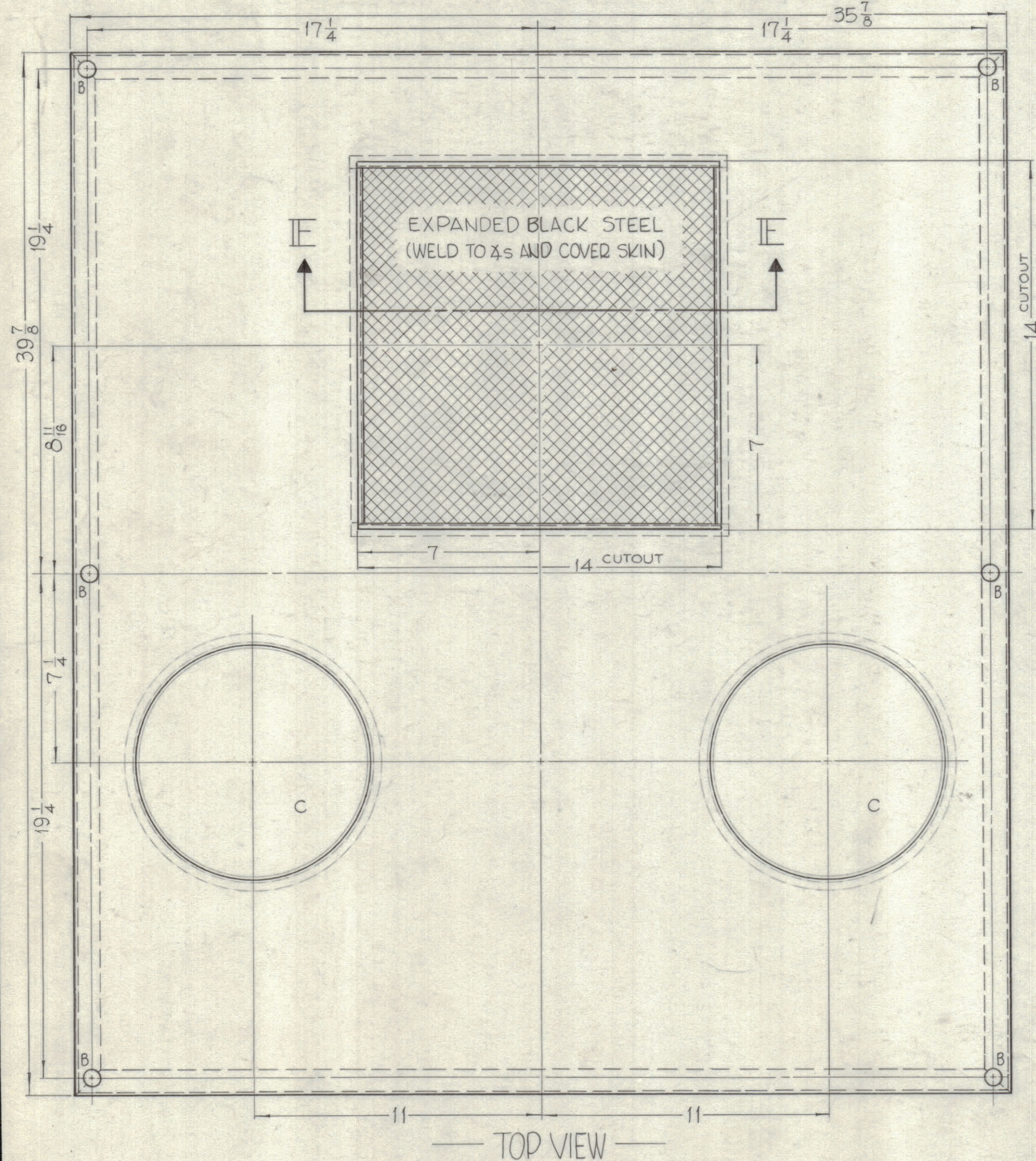


FLANGED FUNNELS
MACH. & MTG. DETAIL
(2 REQ.)
MAT'L: 18 GA. STEEL

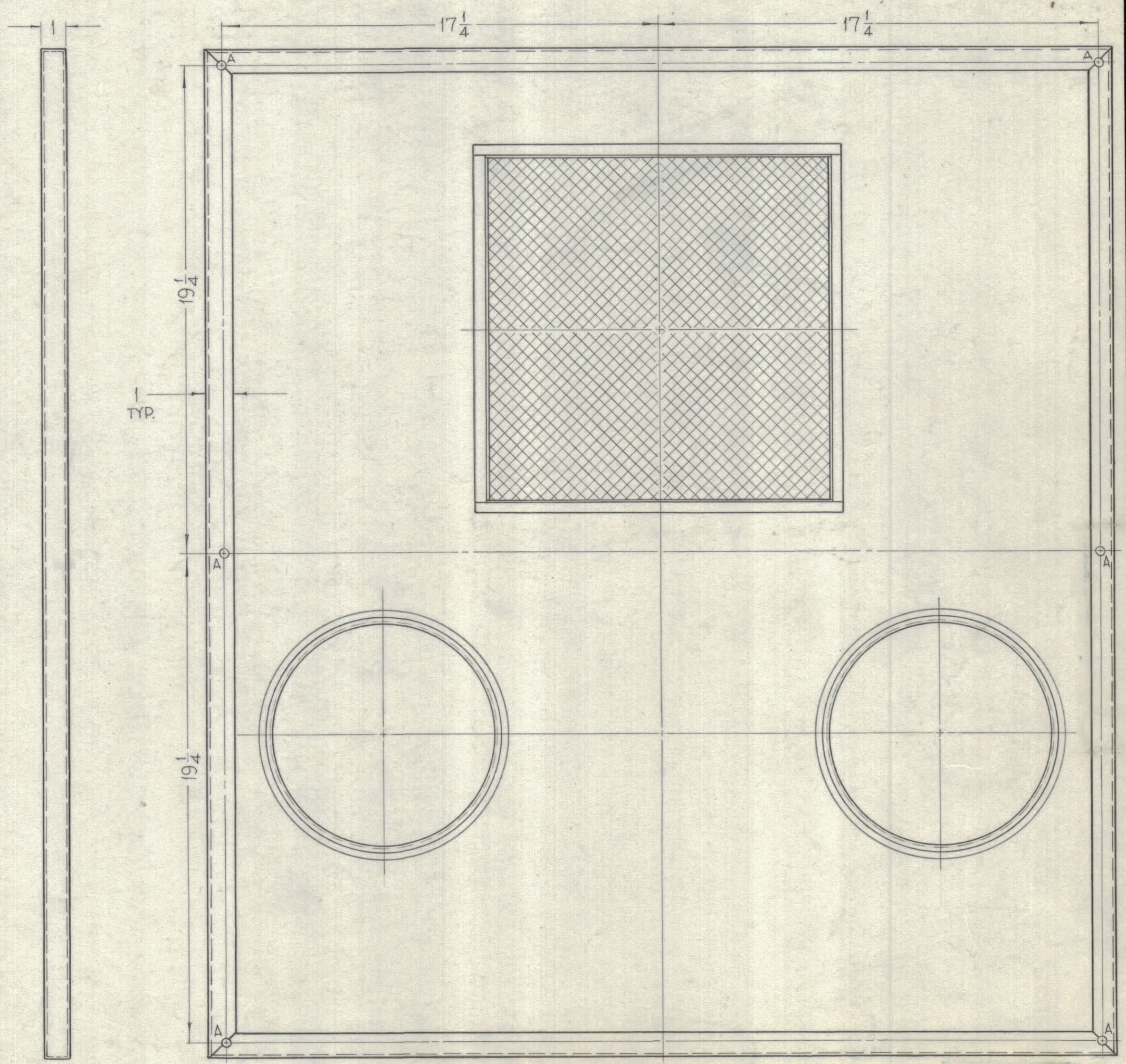


SECTION I-E-I-E

REVISIONS					
ZONE	SYM	DESCRIPTION	DATE	E.M.N. NO.	APPD
	Ø	ORIGINAL RELEASE FOR PRODUCTION	7/15/62		



TOP VIEW



BOTTOM VIEW

FINISHING NOTES

- S-371 - STEEL DEGREASING.
- S-114 - ZINC CHROMATE PRIMED.
- S-220 - SMOOTH, BLUE GRAY ENAMEL, OR PRIME AND PAINT TO CUSTOMERS SPECIFICATIONS.

NOTES

1	GPT-200K	AP-111
QTY./UNIT	MODEL USED ON	ASS'Y. NO.
SCALE	CODE	

THE CONTENTS OF THIS DRAWING ARE THE EXCLUSIVE PROPERTY OF THE TECHNICAL MATERIEL CORP. ITS UNAUTHORIZED USE OR REPRODUCTION IN WHOLE OR IN PART IS STRICTLY FORBIDDEN.

REQ'D.	ITEM	PART NUMBER	DESCRIPTION	SYMBOL
F. BUDETTI LIST OF MATERIAL				
MATERIAL	16 GAUGE, STEEL	THE TECHNICAL MATERIEL CORP. MAMARONECK, NEW YORK		
FINISH	SEE NOTES	COVER, TOP		
UNLESS OTHERWISE SPECIFIED DIMENSIONS ARE IN INCHES AND INCLUDE CHEMICALLY APPLIED OR PLATED FINISHES		DRAWN	DATE	FINAL APPROVAL
		John C. Biele	2-21-63	
		CHECKED	DATE	DATE
			7/14/69	5/15/69
		ELEGT. DES.	DATE	
		MECH. DES.	DATE	
			7/15/69	
DECIMALS	TOLERANCES	FRACTIONS	MS-3163	
.X ± .05		± 1/64	SHEET	
.XX ± .01		ANGLES	REV. LTR.	
.XXX ± .005		± 0° 30'		