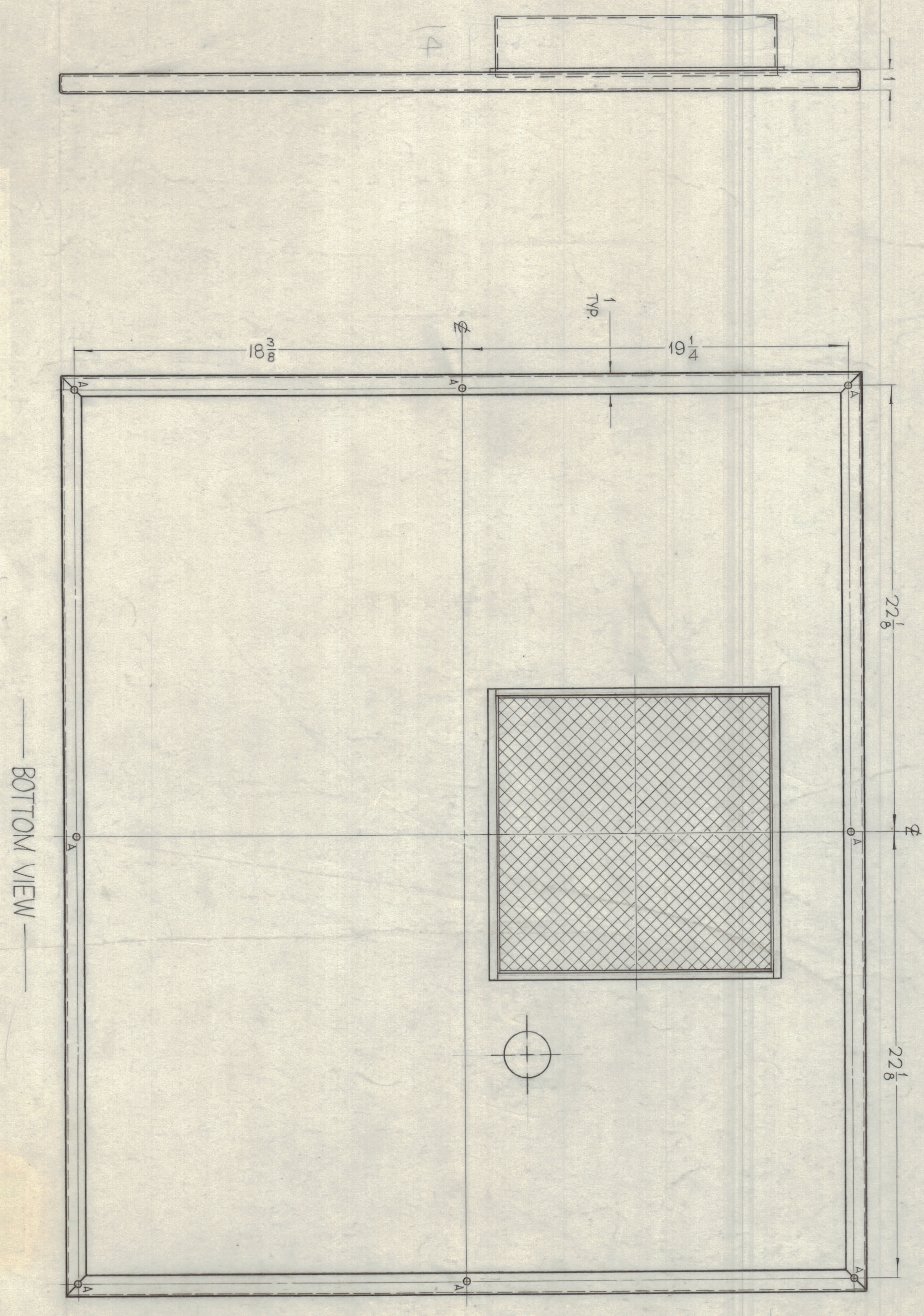
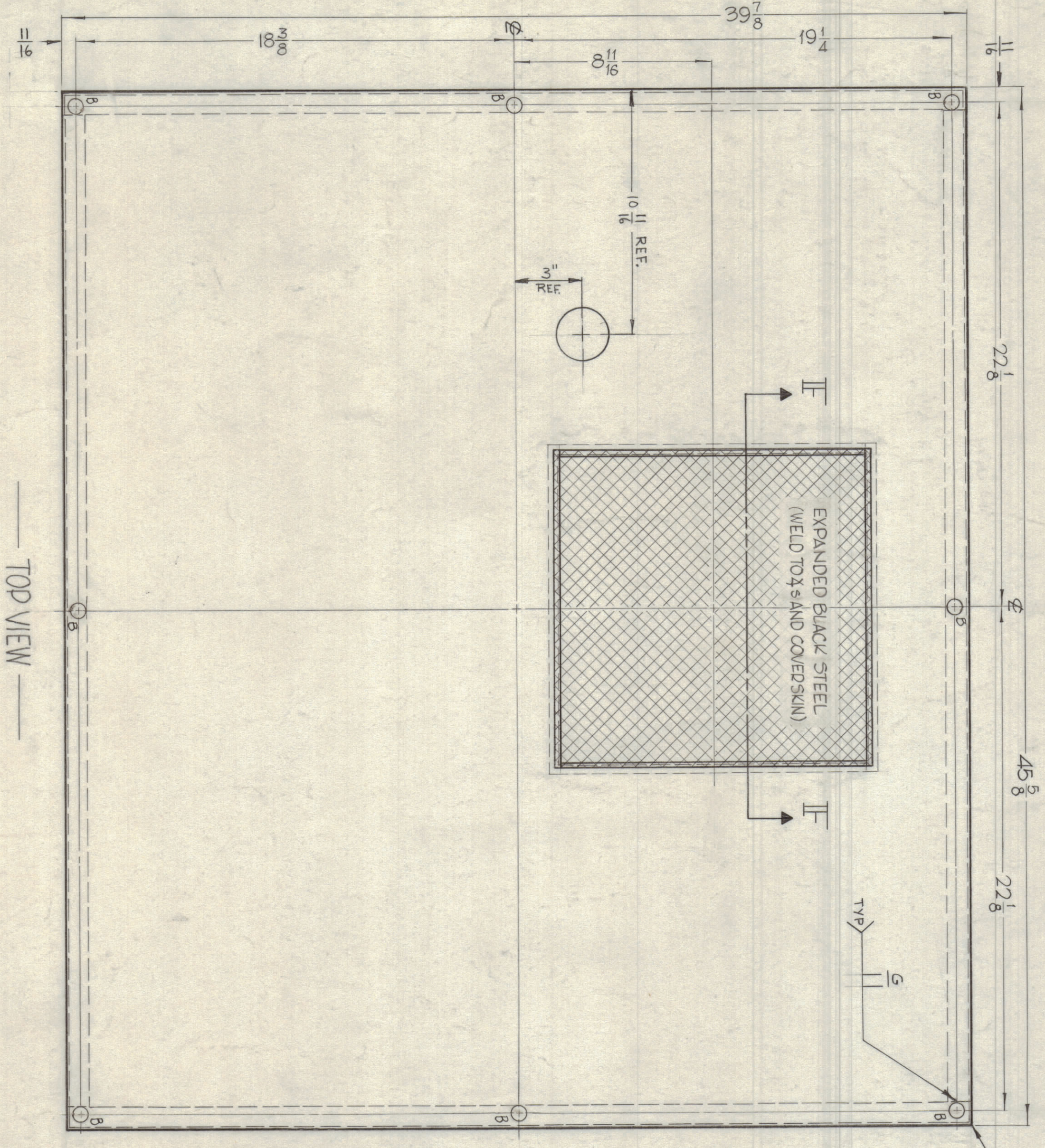
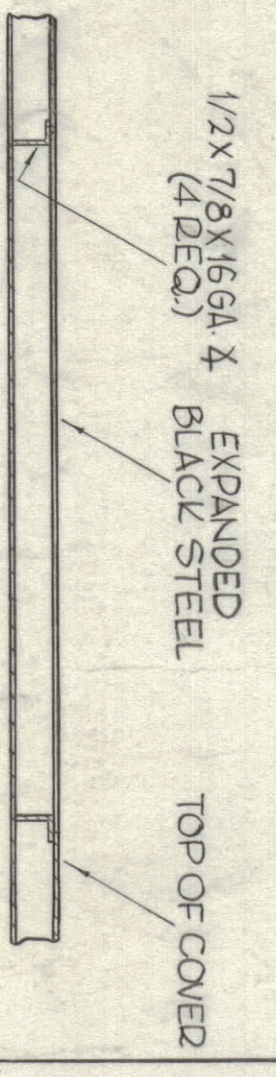


HOLES \_\_\_\_\_  
 A - 5/16 DIA. \_\_\_\_\_ 8 DEQ.  
 B - 11/16 DIA. \_\_\_\_\_ 8 DEQ.



SECTION I - I

TOP VIEW

BOTTOM VIEW

REVISIONS		DATE	E.A.N. NO.	DRAWN	CHECKED	APPROV.
1	ORIGINAL RELEASE FOR PRODUCTION	6/28/61				

NO.	ITEM	PART NUMBER	DESCRIPTION	SYMBOL
1	F. BUDETTI		LIST OF MATERIAL	
2	6 GAUGE, STEEL		THE TECHNICAL MATERIEL CORP.	
3			MAMARONECK, NEW YORK	
4	COVER, TOP			

QTY./UNIT	GPT-200K	ASBY. NO.	AX-394
SCALE	MODEL USED ON		
UNLESS OTHERWISE SPECIFIED DIMENSIONS ARE TO BE TAKEN FROM THE CENTERLINE OF THE TECHNICAL MATERIEL CORP. ITS UNAUTHORIZED USE OR REPRODUCTION IN WHOLE OR IN PART IS STRICTLY FORBIDDEN.			
FINISH	SEE NOTES	DATE	DATE
DRAWN	JOHN C. BUE	DATE	DATE
CHECKED		DATE	DATE
ELECT. DES.		DATE	DATE
TOLERANCES	±.005	DATE	DATE
DATE	MS-3161	DATE	DATE
REV. DTM.		DATE	DATE

FINISHING NOTES

- S-371 - STEEL DECADEASING.
- S-114 - ZINC CHROMATE PRINED
- S-220 - SMOOTH, BLUE GRAY ENAMEL, OR PRIME AND PAINT TO CUSTOMERS SPECIFICATIONS.

NOTES

THE CONTENTS OF THIS DRAWING ARE THE EXCLUSIVE PROPERTY OF THE TECHNICAL MATERIEL CORP. ITS UNAUTHORIZED USE OR REPRODUCTION IN WHOLE OR IN PART IS STRICTLY FORBIDDEN.

MS-3161