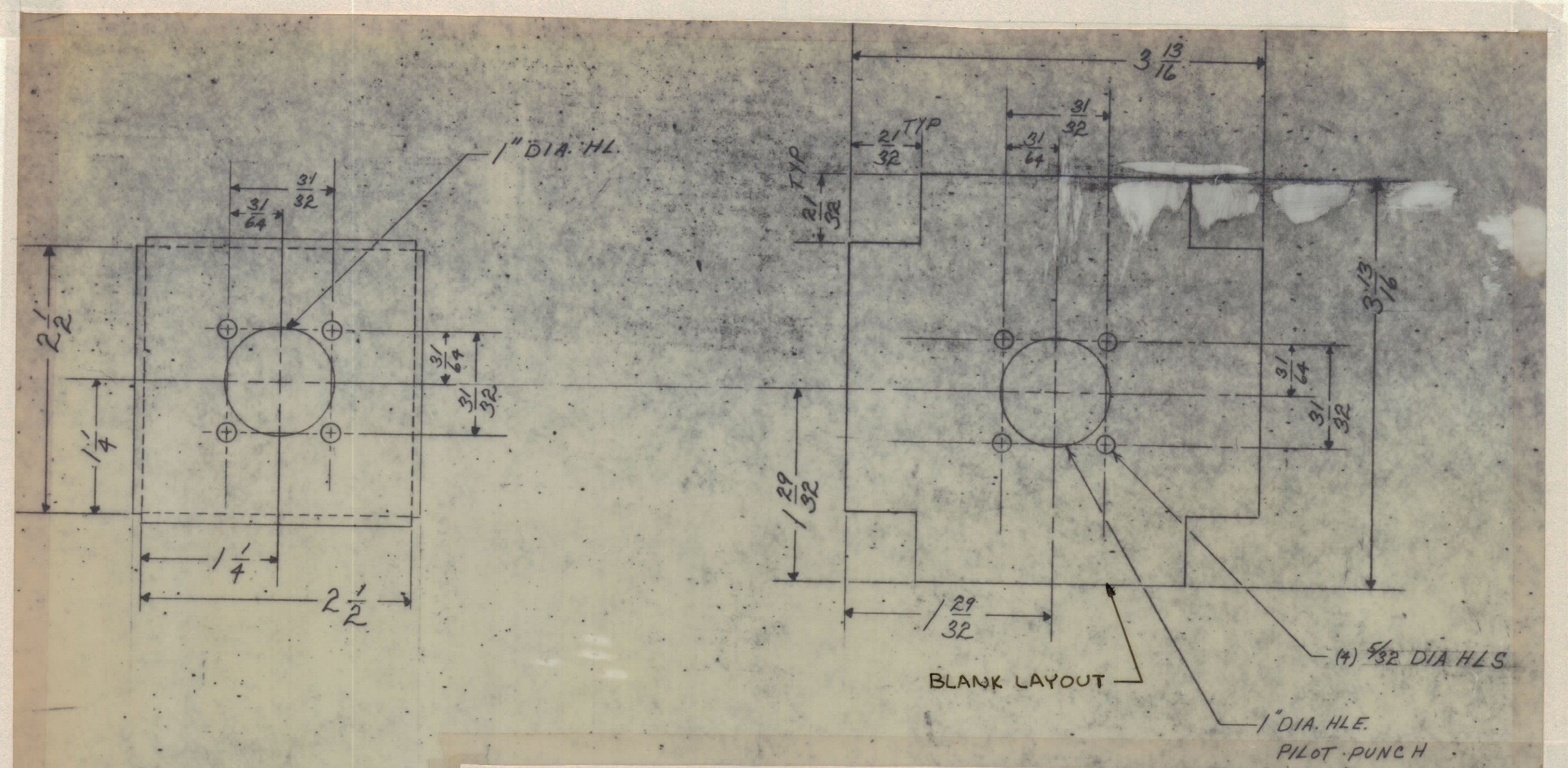
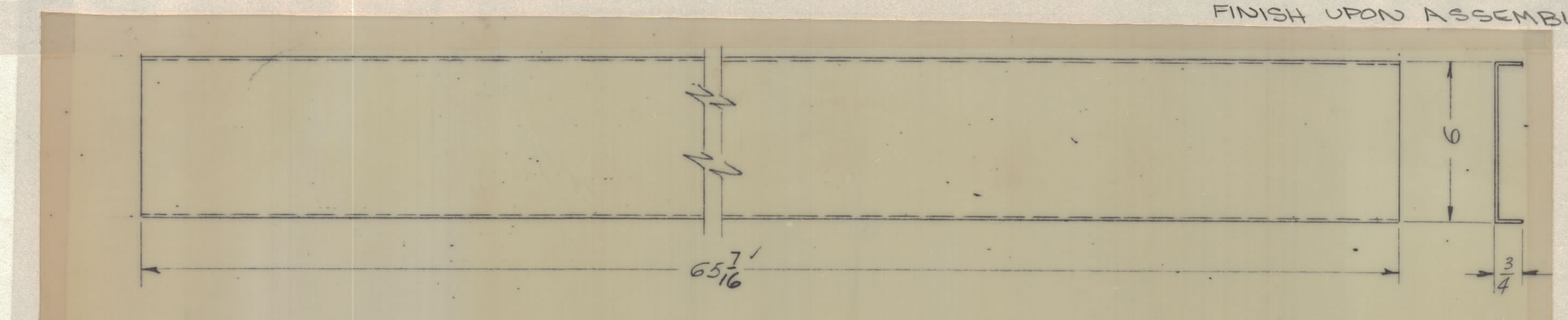


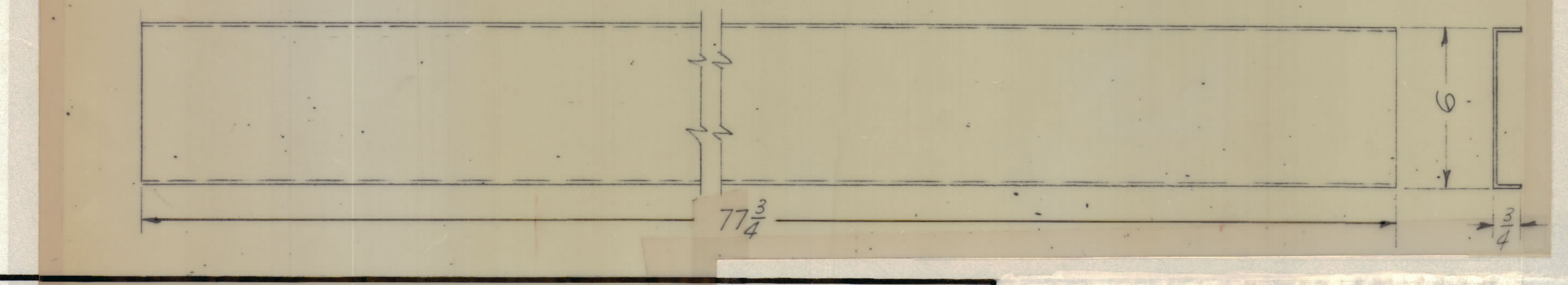
REVISIONS									
ZONE	SYM	DESCRIPTION	DATE	E.M.N. NO.	DRAFT	CHKD	APPD		
Ø		ORIGINAL RELEASE FOR PRODUCTION	1/10/65	Ø					



**DETAIL "B"**  
 14 GA. C.R.S. (.0747)  
 NOTE:  
 FINISH UPON ASSEMBLY

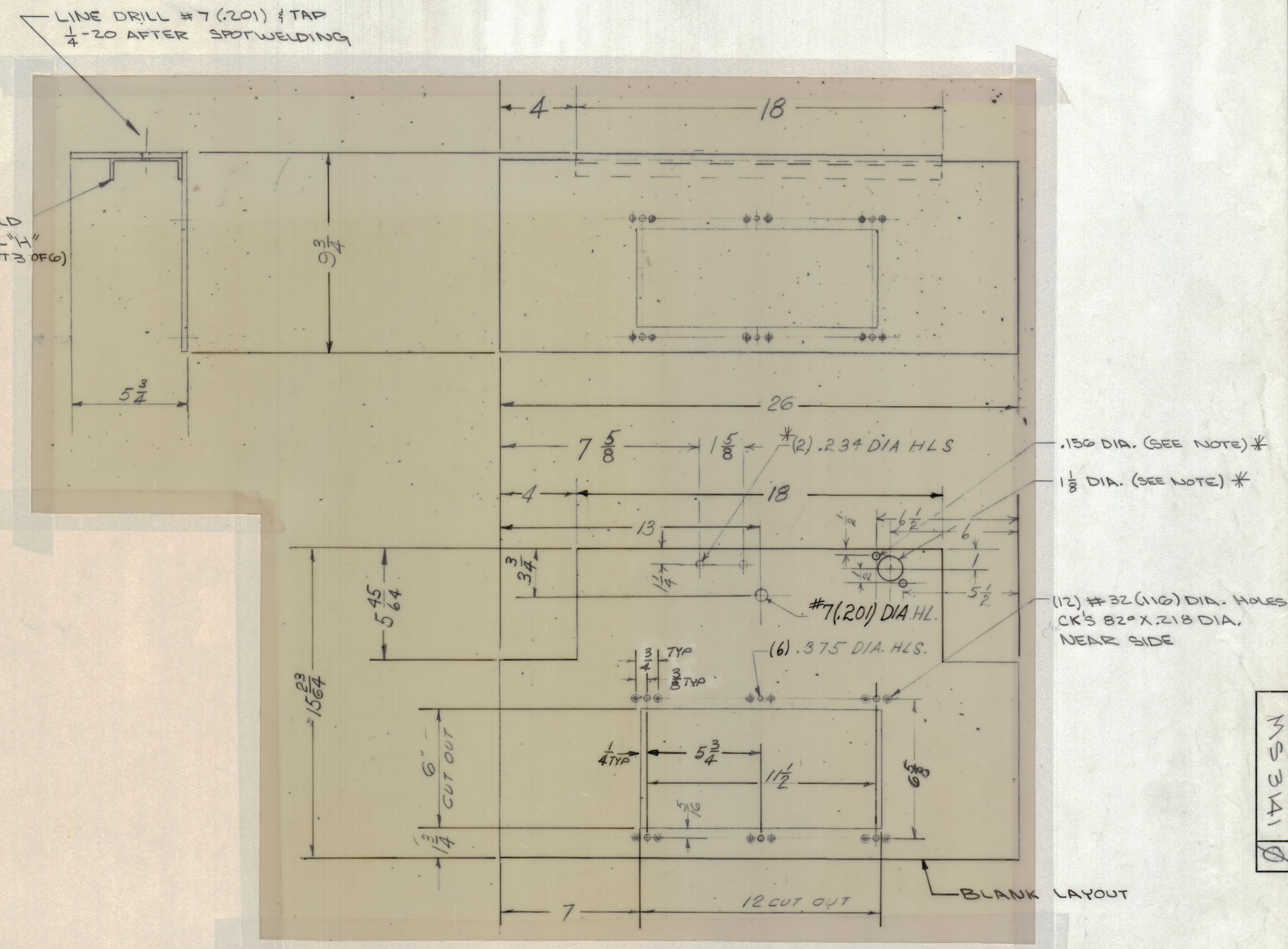
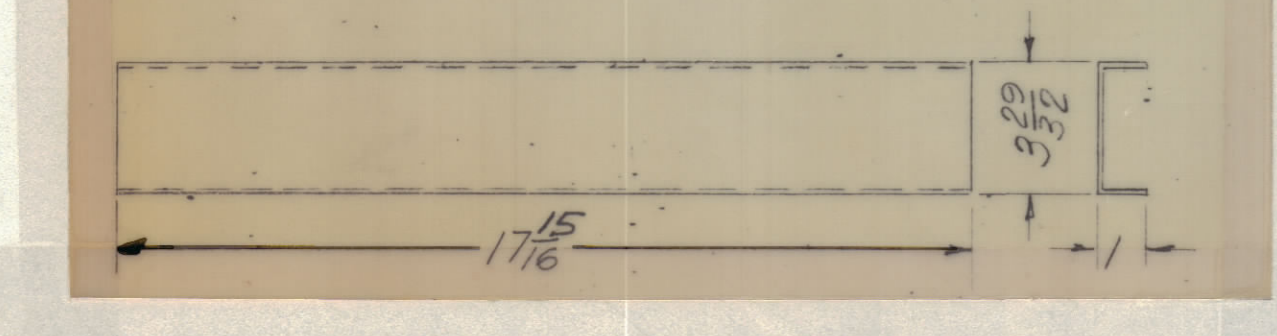


**DETAIL "F"**  
 2 REQ  
 13 GA. STEEL (.0897)  
 NOTE:  
 FINISH UPON ASSEMBLY



**DETAIL "G"**  
 2 REQ  
 13 GA. ST (.0897)  
 NOTE: FINISH UPON ASSEMBLY

**DETAIL "G"**  
 1 REQ  
 13 GA. STEEL (.0897)  
 NOTE:  
 FINISH UPON ASSEMBLY



**DETAIL "D"**  
 2 REQ  
 13 GA. STEEL (.0897)

NOTE: 1 PER UNIT AS SHOWN  
 \* 1 PER UNIT LESS 2 (.234) DIA. HOLES  
 & 3 HOLE CLUSTER  
 FINISH UPON ASSEMBLY

AS NOTED	TER-100K	ASSY. NO.
SCALE	DO NOT SCALE	5401-189
THE CONTENTS OF THIS DRAWING ARE THE EXCLUSIVE PROPERTY OF THE TECHNICAL MATERIEL CORP. ITS UNAUTHORIZED USE OR REPRODUCTION IN WHOLE OR IN PART IS STRICTLY FORBIDDEN.		

REQ'D.	ITEM	PART NUMBER	DESCRIPTION	SYMBOL
BUDETTI LIST OF MATERIAL				
MATERIAL AS SHOWN SHEETS 1 THRU 6			THE TECHNICAL MATERIEL CORP. MAMARONECK, NEW YORK	
FINISH SEE NOTE SHEET 1 OF 6			TITLE BASE, ASSY DETAILS B,D,F,G,H	
QTY/UNIT	MODEL USED ON	DATE	FINAL APPROVAL	DATE
SCALE	CODE	5401-189	EMANZA	2-26-65
UNLESS OTHERWISE SPECIFIED DIMENSIONS ARE IN INCHES AND INCLUDE CHEMICALLY APPLIED OR PLATED FINISHES			DATE	1/10/65
DECIMALS	XX ± .01	FRACTIONS	DATE	DATE
XXX ± .005	TOLERANCES	1/64	DATE	DATE
		ANGLES	DATE	DATE
		± 0° 30'	DATE	DATE
			MECH. DES.	DATE
			DATE	DATE
			SHEET 3 OF 6	REV. LTR.

NOTES

3 OF 6